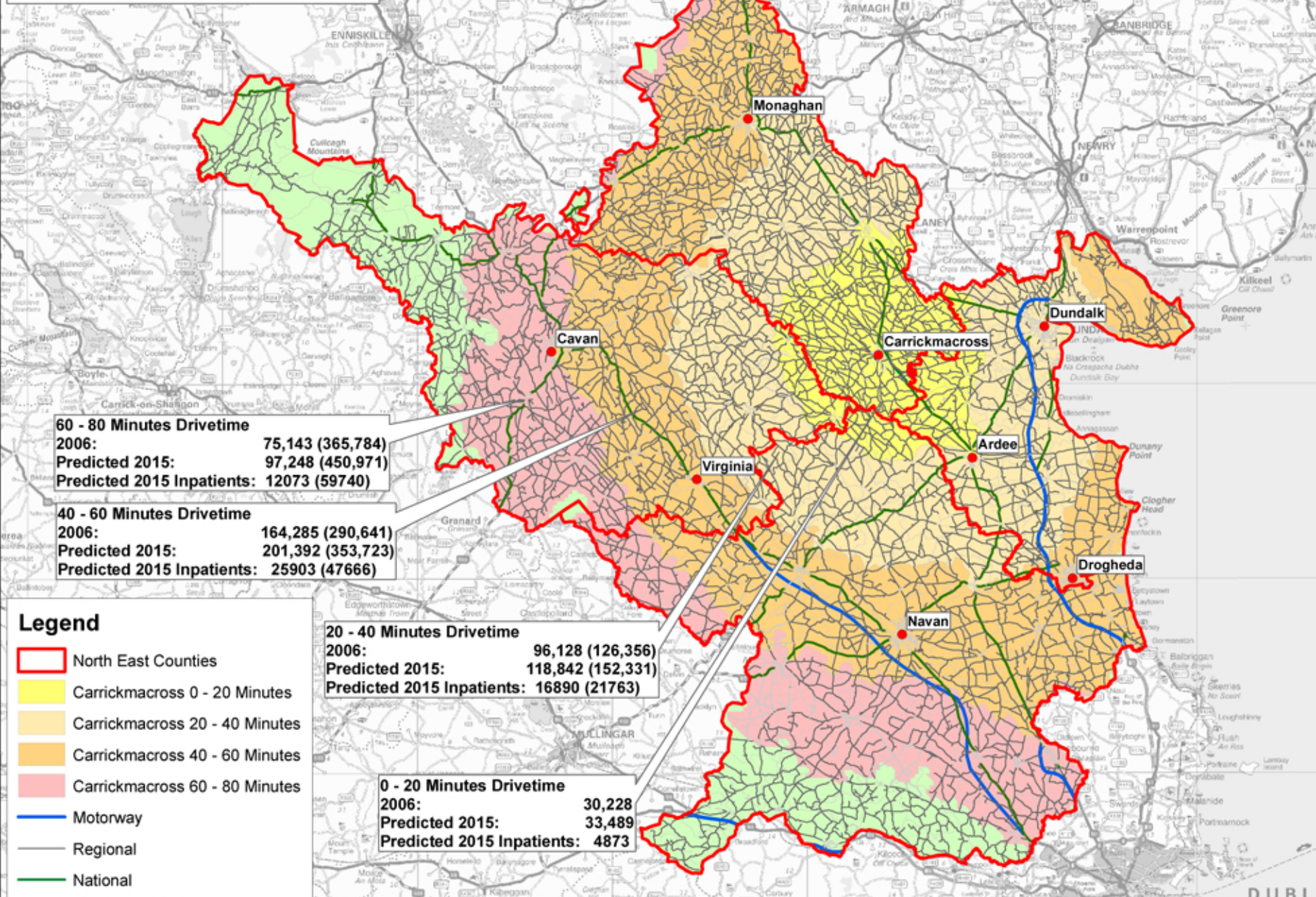


Drive Times from Carrickmacross



60 - 80 Minutes Drivetime
 2006: 75,143 (365,784)
 Predicted 2015: 97,248 (450,971)
 Predicted 2015 Inpatients: 12073 (59740)

40 - 60 Minutes Drivetime
 2006: 164,285 (290,641)
 Predicted 2015: 201,392 (353,723)
 Predicted 2015 Inpatients: 25903 (47666)

20 - 40 Minutes Drivetime
 2006: 96,128 (126,356)
 Predicted 2015: 118,842 (152,331)
 Predicted 2015 Inpatients: 16890 (21763)

0 - 20 Minutes Drivetime
 2006: 30,228
 Predicted 2015: 33,489
 Predicted 2015 Inpatients: 4873

- Legend**
- North East Counties
 - Carrickmacross 0 - 20 Minutes
 - Carrickmacross 20 - 40 Minutes
 - Carrickmacross 40 - 60 Minutes
 - Carrickmacross 60 - 80 Minutes
 - Motorway
 - Regional
 - National