



Health Service Executive
Dr. Steevens' Hospital, Dublin 8

Tel: 01 635 2000
www.hse.ie

Health Service Executive
Oak House, Millennium Park,
Naas, Co. Kildare

Tel: 045 880 400
www.hse.ie

An introduction to the HSE

The Health Service Executive (HSE) was established on January 1st 2005, and is responsible for providing health and personal social services to everyone living in Ireland. This booklet has been prepared to provide information on HSE structures, including the Management Team and their key staff. It is designed to show who we are, how we do our work, and how we intend to achieve our goal – the provision of a world class health care service.

Published May 2007

An introduction to the HSE	2
Organisational Structure	6
HSE Management Team	8
Chief Executive	9
Office of the CEO	10
Regional Health Forums	14
Expert Advisory Groups	15
Population Health	17
Primary, Community & Continuing Care	19
Local Health Offices	21
Local Health Managers	22
National Hospitals Office	27
Hospital Network Managers	30
Hospital Managers & Chief Executives	32
Human Resources	36
Finance	38
ICT	40
Procurement	41
Estates	42
Internal Audit / Corporate Planning and Control Processes	43
SPRI	44
Process and Operations / Corporate Pharmaceutical Unit /	
Winter Initiative Project Team	45
Health Information & Quality Authority	46
The Department of Health and Children	48
HSE Infoline	52

An introduction to the HSE

The Health Service Executive (HSE) was established in January 2005 as the single body responsible for meeting Ireland's health and social care needs. The HSE provides thousands of services to young and old, in hospitals, health facilities and in communities across the country.

These services range from public health nurses treating older people in the community to caring for children with challenging behaviour; from educating people how to live healthier lives, to performing highly-complex surgery; from planning for major emergencies, to controlling the spread of infectious diseases.

The largest employer in the State, the HSE employs more than 65,000 staff in direct employment and a further 35,000 staff are employed by voluntary hospitals and bodies funded by the HSE. The HSE's budget is the largest of any public sector organisation. At some stage every year, everybody in Ireland will use one or more of the services provided by the staff of the HSE. They are of vital importance to the entire population.

The establishment of the HSE represents the beginning of the largest programme of change ever undertaken in the Irish public service. Prior to this our health care services were delivered through a range of different agencies, each of which was independently answerable to the Department of Health and Children. It was a complex structure that made it difficult to provide nationally consistent health services. This is despite the fact that the health budget has been increasing rapidly from €3.7 billion in 1997 to over €13 billion in 2006.

The decision of the Government to replace all these agencies with the HSE signalled the start of a new era in Irish health care.

Transforming our services

Beginning now, and during the next five years or so, the goal of the Health Service Executive is to build a world class health service in Ireland. From 2007 to 2010, the goal of the Health Service will be programmes that make it easier for people to access quality services and easier for the HSE to deliver these quality services. To do this the HSE will simplify its business so that it can more easily monitor what services are being delivered, and how.

While there are some challenging structural and process issues to address within the Irish Health Services, it is important to remember that, everyday, there are thousands of people delivering and receiving outstanding services around the country.

For example in a client survey 93% of patients said they were satisfied with the service they received during their hospital stay. (Irish Society for Quality and Safety in Healthcare (ISQSH)).

At an operational level the biggest challenge facing the HSE is the speed with which reliance on hospitals can be reduced and capacity to deliver care within the community setting can be built.

This emphasis must be changed by building a fully integrated and responsive local health service, so that people are confident that the vast majority of their health needs can be provided outside hospitals. As community-based services are strengthened, the barriers that currently exist between hospital care and community care will begin to dissolve and the gap between the two services will disappear.

Population and health status

During the past four years our population has increased by more than 8%. There are now 4.2 million people living in Ireland, the highest since 1861. Some forecast that this will increase beyond 5 million in 10 years. Compared with our European neighbours we have a relatively young population; just 11% is over 65. However, in 30 years, 20% of the population will be over 65 and 40% will be over 50.

These changes are significant for two reasons. Firstly health costs increase as people get older. A recent study by NHS Scotland shows that health costs increase by 100% for people aged 50-54, 213% for people aged 65-69 and 400% for people aged 75-79.

Secondly, with age come increasing numbers with chronic illness. For example at the moment, despite our relatively favourable age profile, two out of three patients admitted as medical emergencies suffer from problems relating to their chronic illness and 5% of inpatients with chronic illness use 40% of all bed days.

The patterns emerging in the USA and UK give us some indication of what lies ahead. In the USA, 78% of all health costs is used to treat people with chronic illness and in the UK, 80% of G.P. visits are by people with chronic illnesses. Also in the UK patients with chronic illness or complications use over 60% of hospital bed days.

Diseases and illnesses such as Diabetes, Heart Failure, some Cancers, Chronic Obstructive Pulmonary Disease, Dementia and Arthritis increase with age, and many older people are living with more than one Chronic Disease. Lifestyle factors such as smoking, alcohol, diet, obesity and inactivity are increasing the prevalence of chronic illness.

25% of the population has a Chronic Disease and 60% of deaths are as a result of Chronic Disease. It is estimated that 2 out of 3 patients admitted as medical emergencies have exacerbations of chronic disease.

In Ireland we have a breathing space of one or two decades before we face the same challenges as other countries. The HSE must use this opportunity to bring true and lasting reform to the Irish health services and ensure it creates the best possible system to deal with all the challenges of the future.

If we do not reduce reliance on hospitals and begin to manage chronic illness in the community, where patients will actually experience better outcomes, the hospital system will become clogged and it will be increasingly difficult to provide the appropriate services.

Our priorities

The Health Service Executive is focusing on a number of key areas: There will be increasing emphasis on Primary and Community Care and Health Promotion, by increasing preventative intervention to keep people healthy.

The HSE is in the process of establishing hundreds of Primary Care Teams nationwide. Each team will provide care, using multi disciplinary teams, to defined population groups of around 7,000 each. The aim is to establish a total of around 500 teams in total.

The HSE is also establishing Community Intervention Teams which can respond rapidly to meet the needs of people who, without help may have to be admitted to hospital and also to facilitate earlier discharges. Investment will also be made in improving the availability of diagnostic facilities within the community setting.

The major changes to be made at community level will also be mirrored at hospital level. The hospital care system needs to be freed up so that it is better positioned to focus on meeting acute, secondary and tertiary patient care needs. To achieve this, hospital processes must be developed so that they can operate more effectively.

The HSE has established a set of National Expert Advisory Groups which will be led by clinicians and will bring together the expertise and knowledge of a broad spectrum of people who are involved in planning, delivering and using services provided by the HSE. Each EAG will be dedicated to a specific area, the first four being: Mental Health, Diabetes, Children and Older People.

They will play a significant role in prioritising what specific improvements need to be made, and how they should be implemented. They will champion national consistency, influence policy and drive excellence.

Summary

At the HSE our task is to build a health and social care system that is sustainable and capable of delivering nationally consistent high quality services. To achieve this we must, with persistence and determination, radically change the way we do our business. This is what the health transformation programme is all about. Visit the HSE website, www.hse.ie, to read more about the HSE Transformation Programme.

HSE Board

Liam Downey, Chairman
 Brendan Drumm, Chief Executive
 Donal de Buitléir
 Niamh Brennan
 Pat Farrell
 P.J. Fitzpatrick

Maureen Gaffney
 Eugene McCague
 Joe Macri
 Joe Mooney
 Michael Murphy
 Anne Scott

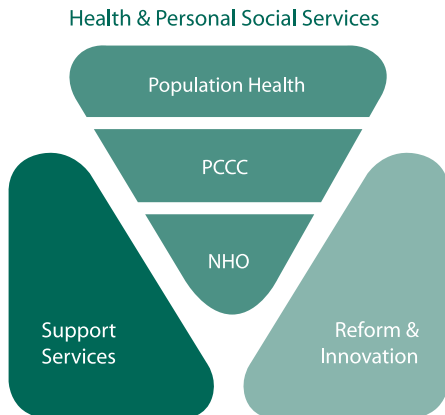
Assistant National Director, Board Secretary – Dara Purcell
 Dr. Steevens' Hospital Dublin 8
 Tel: 01 635 2877 Email: dara.purcell1@hse.ie

Organisational Structure

The HSE manages services through a structure designed to put patients and clients at the centre of the organisation.

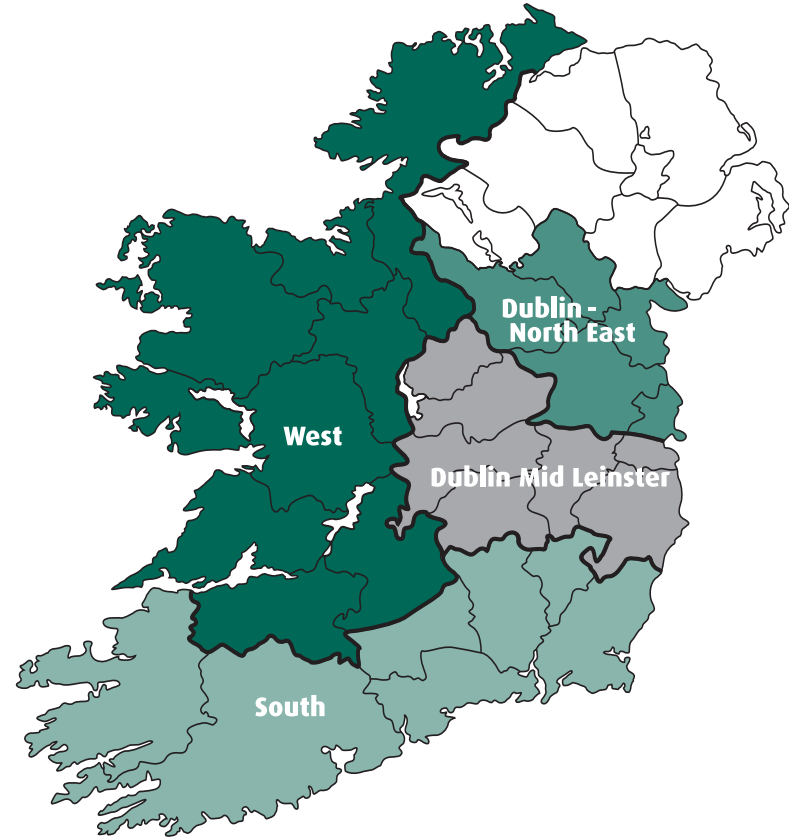
Health and Personal Social Services are divided into three service delivery units:

- Population Health promotes and protects the health of the entire population;
- Primary, Community and Continuing Care (PCCC) delivers health and personal social services in the community and other settings;
- National Hospitals Office (NHO) provides acute hospital and ambulance services throughout the country.



Administrative Areas

The services delivered by PCCC, NHO and Population Health are organised through the four administrative areas: HSE West, HSE South, HSE Dublin North East and HSE Dublin Mid Leinster.



- HSE West Limerick, Tipperary North, Clare, Galway, Mayo, Sligo, Roscommon, Leitrim, Donegal
- HSE South Kerry, Cork, Waterford, Wexford, Carlow, Kilkenny, Tipperary South
- HSE Dublin North East Dublin North, Louth, Meath, Cavan, Monaghan
- HSE Dublin Mid Leinster Dublin South, Wicklow, Kildare, Laois, Offaly, Longford, Westmeath

HSE Management Team

Professor Brendan Drumm – Chief Executive Officer
Dr. Steevens' Hospital, Dublin 8 Tel: 01 635 2500

Tommie Martin – National Director, Office of the CEO
Dr. Steevens' Hospital, Dublin 8 Tel: 01 635 2500

Ann Doherty – National Director, National Hospitals Office
Dr. Steevens' Hospital, Dublin 8 Tel: 01 635 2500

Laverne McGuinness – National Director Primary, Community & Continuing Care
Dr. Steevens' Hospital, Dublin 8 Tel: 01 635 2000

Dr. Patrick Doorley – National Director of Population Health
Millennium Park, Naas, Co. Kildare Tel: 045 882 557

Liam Woods – National Director of Finance
Millennium Park, Naas, Co. Kildare Tel: 045 882 563

Jane Carolan – Assistant National Director of Corporate Planning & Control Processes
Parkgate Street Business Centre, Dublin 8 Tel: 021 492 3616 or 01 635 2889

Martin McDonald – National Director of Human Resources
Dr. Steevens' Hospital, Dublin 8 Tel: 01 635 2500

Michael Flynn – National Director of Internal Audit
1st Floor, Corrigan House, Fenian Street, Dublin 2 Tel: 01 611 4860

Brian Gilroy – National Director of Estates
2/3 Parnell Square East, Dublin 1 Tel: 01 871 7000

Damien McCallion – Head of ICT Operations
Parkgate Street Business Centre, Dublin 8 Tel: 01 635 2500

Leo Stronge – Head of Procurement
Central Business Park, Clonminch, Tullamore, Co. Offaly Tel: 057 935 7680

John O'Brien – National Director (Temporary), Winter Initiative
31/33 Catherine Street, Limerick Tel: 061 483 286

Prof Tom Keane – Interim Director, National Cancer Control Programme
Kings Inn House, 20 Parnell Street, Dublin 1
Tel: 01 865 9310

Chief Executive

Chief Executive Officer – Professor Brendan Drumm
Dr. Steevens' Hospital, Dublin 8 Tel: 01 635 2500

General Manager, CEO's Office – Phil Shovlin
Dr. Steevens' Hospital, Dublin 8
Tel: 01 635 2500 Email: phil.shovlin@hse.ie

Personal Assistant to CEO – Patricia Perry
Dr. Steevens' Hospital, Dublin 8
Tel: 01 635 2500 Email: patricia.perry@hse.ie

Advisors to the CEO

Performance Measurement – Maureen Lynott
Dr. Steevens' Hospital, Dublin 8
Tel: 01 635 2500 Email: maureen.lynott@hse.ie

Strategic Communications – Karl Anderson
Dr. Steevens' Hospital, Dublin 8
Tel: 01 635 2500 Email: andersonk@hse.ie

Human Resources – Maura McGrath
Dr. Steevens' Hospital, Dublin 8
Tel: 01 635 2500 Email: maura.mcgrath@hse.ie

Office of the CEO

The role of the Office of the CEO is to represent, advise and support the CEO in carrying out his functions. The office has a number of key corporate functions including Board Affairs, Corporate & Parliamentary Affairs, Quality and Risk Management, Consumer Affairs, Communications and the Regional Health Offices as well as a range of cross directorate, governance and policy development functions including Expert Advisory Groups, Medical Education, Training & Research, Consultant Appointments, Cross-border Relations and Special Reform Projects.

National Director – Tommie Martin

Dr. Steevens' Hospital, Dublin 8

Tel: 01 635 2500 Email: tommie.martin1@hse.ie

Corporate Affairs

Head of Division – Kilian McGrane

Parkgate Street Business Centre, Dublin 8

Tel: 01 635 2500 Email: kilian.mcgrane@hse.ie

Parliamentary Affairs & Public Representations

The Parliamentary Affairs Division (PAD) manages the interface between the HSE and the Oireachtas by organising, developing and monitoring the efficient management of Parliamentary Questions (PQs) and representations from Oireachtas members. PQ responses from the HSE are posted on the HSE website, www.hse.ie.

Tel: 01 635 2501 Email: pad@hse.ie

Head of Parliamentary Affairs – Ray Mitchell

Parkgate Street Business Centre, Dublin 8

Tel: 01 635 2500 Email: ray.mitchell@hse.ie

Board Liaison

Assistant National Director-Board Secretary – Dara Purcell

Dr. Steevens' Hospital, Dublin 8

Tel 01 635 2877 Email: dara.purcell1@hse.ie

Quality and Risk Management

The Quality and Risk Management division is responsible for the development of a national integrated quality and risk management strategy, standards and systems for the HSE, monitoring the implementation of the service delivery units and providing assurance to the CEO, the Board and the public.

Head of Division – Edwina Dunne

Millennium Park, Naas, Co. Kildare

Tel: 045 882 598 Email: edwina.dunne1@hse.ie

Quality and Risk Manager HSE West – Maria McInerney

St. Cammillus' Hospital, Shelbourne Road, Limerick

Tel: 061 483 644 Email: maria.mcinerney@hse.ie

Quality and Risk Manager HSE Dublin Mid Leinster – Cora McCaughan

Block 4, Central Business Park, Clonminch, Tullamore, Co. Offaly

Tel: 057 935 7948 Email: cora.mccaughan@hse.ie

Quality and Risk Manager HSE Dublin North East – Cornelia Stuart

Navan Road, Kells, Co. Meath

Tel: 046 928 0580 Email: cornelia.stuart@hse.ie

Quality and Risk Manager, HSE South - Marie Kehoe

Eye, Ear & Throat Hospital, Western Road, Cork.

Tel: 021 492 1528 Email: mariet.kehoe@hse.ie

Consumer Affairs

The Consumer Affairs division is responsible for developing best practice models of customer care, including a statutory complaints handling system, implementing the FOI and Data Protection Acts, and the statutory appeals system.

Head of Division – Mary Culliton
Millennium Park, Naas, Co. Kildare
Tel: 045 882 576 Email: mary.culliton2@hse.ie

General Manager Consumer Affairs HSE Dublin Mid Leinster – Debbie Keyes
Block 4, Central Business Park, Clonminch, Tullamore, Co. Offaly
Tel: 057 935 7600 Email: deborah.keyes@hse.ie

General Manager Consumer Affairs HSE Dublin North East – Rosalie Smith Lynch
Kells, Co. Meath
Tel: (Kells) 046 928 0511 (Cavan) 049 4360462 Email: rosalie.smithlynch@hse.ie

General Manager Consumer Affairs HSE West – Chris Rudland
Merlin Park Regional Hospital Galway
Tel: 091 775 819 Email: chris.rudland@hse.ie

General Manager Consumer Affairs HSE South – Sinead Byrne
Administration Block, Kilcreene Hospital, Kilkenny
Tel: 056 778 5598 Email: sineadj.byrne@hse.ie

National Communications Unit (NCU)

The NCU is responsible for developing and managing the HSE's internal and public communications initiatives and provides consultancy advice and support to staff across the organisation. The NCU comprises the National Press Office, Public, Internal and Corporate Communications, and an Area Communications Manager in each HSE Area.

Acting Head of National Communications Unit – Kilian McGrane
Parkgate Street Business Centre, Dublin 8
Tel: 01 635 2500 Email: kilian.mcgrane@hse.ie

Head of National Press Office and Media Relations – Alex Connolly
Parkgate Street Business Centre, Dublin 8
Tel: 01 635 2840 Email: alex.connolly@hse.ie or press@hse.ie

Head of Public Communications – Fidelma Browne
Parkgate Street Business Centre, Dublin 8
Tel: 01 635 2894 Email: fidelma.browne@hse.ie

Head of Internal Communications – Stephen McGrath
Parkgate Street Business Centre, Dublin 8
Tel: 01 635 2838 Email: stephen.mcgrath1@hse.ie

Head of Corporate Communications – Lisa Clancy
Parkgate Street Business Centre, Dublin 8
Tel: 01 635 2881 Email: lisa.clancy@hse.ie

Area Communications Managers

The four Area Communications Managers work closely with the Network Managers, Primary Care and Continuing Care Assistant National Directors, Local Health Office Managers and Regional Health Office Directors. They provide a range of communications services: press, internal and public communications, and support the development of national communications policies and initiatives.

Area Communications Manager; Dublin Mid Leinster – Dymphna Bracken
Arden Road, Tullamore, Co. Offaly
Tel: 057 935 9795 Email: dymphna.bracken@hse.ie

Area Communications Manager; Dublin North East – Rosaleen Harlin
HSE Dublin North East, Dublin Road, Kells, Co. Meath
Tel: 046 928 0576 Email: rosaleen.harlin@hse.ie

Area Communications Manager; South – Christine Eckersley
Áras Slainte, Wilton Road, Cork
Tel: 021 492 3776 Email: christine.eckersley@hse.ie

Area Communications Manager; West – Caitriona Meehan
HSE West, Merlin Park, Galway
Tel: (091) 775 474 Email: communicationswest@hse.ie

Regional Health Forums

There is a Regional Health Forum in each of the HSE Areas, made up of representatives from the relevant city and county councils. Each Forum makes representations to the Health Service Executive on the range and operation of health and personal social services in their area.

The 4 Regional Health Forums are:

- Regional Health Forum, Dublin Mid Leinster (40 members);
- Regional Health Forum, Dublin and North-East (29 members);
- Regional Health Forum, South (39 members); and
- Regional Health Forum, West (40 members).

Regional Health Offices

There are four Regional Health Offices, each led by a Director, and their functions include:

- Supporting the Regional Health Forums;
- Facilitating work at an area level, including managing the interface with Oireachtas members;
- Undertaking specific projects on behalf of the Office of the CEO.

Contact details for the four Regional Health Offices are as follows:

Ray Mitchell

Director, Regional Health Office
HSE Dublin North East,
Dublin Road, Kells, Co. Meath
Tel: 046 928 0621
Fax: 046 9241784
Email: ray.mitchell@hse.ie

Dr. Seán Conroy

Director, Regional Health Office
HSE West,
Merlin Park, Galway
Tel: 091 775 262
Fax: 091 771 318
Email: sean.conroy@hse.ie

John Cregan

Director, Regional Health Office
HSE Dublin Mid Leinster,
Clonminch, Tullamore,
Co. Offaly
Tel: 057 935 7600
Fax: 057 935 7660
Email: john.cregan@hse.ie

Ger Crowley

Director, Regional Health Office
HSE South,
Áras Slainte,
Wilton Road, Cork
Tel: 021 492 3603
Fax: 021 454 5748
Email: elaine.omahony@hse.ie

Expert Advisory Groups (EAGs)

EAGs advise the HSE on the organisation and development of health and personal social services. They enable health professionals and clinical experts, patients, clients and service user groups to play an active role in health care reform and operational policy development, and monitoring of policy implementation within the HSE.

EAGs are centrally located within the organisation structure of the HSE. Responsibility for the EAGs rests with the National Director, Office of the CEO, who is supported by a number of Assistant National Directors with responsibility for specific EAGs. Together, their role is to provide strategic leadership and expertise in the development and interpretation of national policy, strategies and service design. They will verify compliance with policy and legislation, monitor appropriate resource utilisation and ensure national consistency in policy implementation.

Assistant National Director, Palliative Care and Chronic Disease, Office of the CEO – James Conway

Tel: 045 882 581 Email: jamesp.conway@hse.ie

Assistant National Director, Children, Office of the CEO – Seamus Mannion

Tel: 091 775 414 Email: seamus.mannion@hse.ie

Assistant National Director, Primary Care, Office of the CEO – Mary O’Connell

Tel: 01 274 4271 Email: mary.oconnell1@hse.ie

Assistant National Director, Social Inclusion, Office of the CEO – Alice O’Flynn

Tel: 01 620 1703 Email: alice.oflynn@hse.ie

Assistant National Director, Disabilities, Office of the CEO – James O’Grady

Tel: 061 483 221 Email: james.ogrady@hse.ie

Assistant National Director, Mental Health, Office of the CEO – Martin Rogan

Tel: 045 882 537 Email: martin.rogan1@hse.ie

Assistant National Director, Older People, Office of the CEO –
Kilian McGrane

Tel: 01 635 2500 Email: kilian.mcgrane@hse.ie

EAG Co-ordinator – Ruth Langan

Dr. Steevens' Hospital Dublin 8

Tel: 01 635 2212 Email: ruth.langan1@hse.ie

Consultant Appointments Unit

Administrator – Colette Vincent

Parkgate Street Business Centre, Dublin 8

Tel: 01 635 2500 Email: colette.vincent1@hse.ie

Population Health

Population Health is responsible for promoting and protecting the health of the entire population and target groups, with particular emphasis on health inequalities. It achieves this by positively influencing health service delivery and outcomes through strategy and policy. Population Health is responsible for immunisation programmes, infection control and environmental health.

National Director – Dr. Patrick Doorley

Millennium Park, Naas, Co. Kildare

Tel: 045 882 557 Email: patrick.doorley@hse.ie

Assistant National Director, Health Protection – Dr. Kevin Kelleher

Health Protection ensures the public are protected from infectious diseases and from harm as a result of environmental hazards.

31-33 Catherine Street, Limerick

Tel: 061 483 338 Email: kevin.kelleher@hse.ie

Assistant National Director, Health Promotion – Catherine Murphy

Health Promotion aims to improve and promote health. It works to address key health issues, including promoting mental health, smoking cessation, sexual health issues, promoting physical activity and nutrition programmes.

Eye, Ear & Throat Hospital, Western Road, Cork

Tel: 021 492 1666 Email: catherine.murphy@hse.ie

Assistant National Director, Environmental Health – Martin Devine

Environmental Health assesses, corrects, controls and prevents those factors in the environment that can potentially adversely affect the health of the population.

Millennium Park, Naas, Co. Kildare

Tel: 045 880 442 Email: martin.devine@hse.ie

Assistant National Director, Emergency Planning – Gavin Maguire

Emergency Planning ensures that the HSE is capable of responding to major emergencies. These may arise in different ways such as a major road or rail accident, storm flooding or infectious disease epidemic.

Block B, The Civic Centre, Bray, Co. Wicklow
Tel: 01 274 4200 Email: gavin.maguire@hse.ie

Assistant National Director, Strategic Planning & Evaluation – Dr. Marie Laffoy

Strategic Planning has a key role working with PCCC and the NHO in formulating plans to ensure an entire population health approach is adopted.

Dr. Steevens' Hospital, Dublin 8
Tel: 01 635 2170 Email: marie.laffoy@hse.ie

Assistant National Director, Health Intelligence – Dr. Davida De La Harpe

Health intelligence supports the use and development of knowledge to improve the health of the population. It includes information systems use, evidence based health care, and support for research and development.

Mezzanine Floor, Stewarts Sports Centre, Palmerstown, Dublin 20
Tel: 01 642 6910 Email: davida.delaharpe@hse.ie

National Office for Suicide Prevention (NOSP), Director – Geoff Day

The office was established by the HSE in September 2005 following the launch of Reach Out - The National Strategy for Action on Suicide Prevention. The office is responsible for monitoring the implementation of Reach Out, coordinating suicide prevention activities and developing services to support the actions in Reach Out. The office has a website dedicated to suicide prevention activities: www.nosp.ie and the email is info@nosp.ie.

Dr. Steevens' Hospital, Dublin 8
Tel: 01 635 2179 Email: geoff.day1@hse.ie

Primary, Community & Continuing Care

Primary, Community and Continuing Care services are the first point of contact for people in the community that need to access health services. The Primary, Community and Continuing Care Directorate (PCCC) is responsible for the planning, management & delivery of all Primary, Community and Continuing Care services consistent with National Policy in order to maximise the health & wellbeing of the population. The Directorate covers a wide diversity of services and deals with all services in the community excluding the Acute Hospitals. This includes primary care, mental health, disability, children, youth and families, community hospital, continuing care services and social inclusion services. Services are delivered through 32 Local Health Offices (LHOs).

The PCCC Management team consists of the National Director and six Assistant National Directors. There are four Assistant National Directors for Service Management an Assistant National Director for Contracts and an Assistant National Director for Corporate, Performance, Monitoring and Evaluation.

National Director – Laverne McGuinness

Dr. Steevens' Hospital, Dublin 8
Tel: 01 635 2000 Email: laverne.mcguinness@hse.ie

Assistant National Director, Contracts – Pat O'Dowd

HSE Dublin Mid Leinster, Marlinstown Business Park, Mullingar, Co. Westmeath
Tel: 044 933 0762 Fax: 044 933 0763
Email: pat.odowd@hse.ie or andrea.carroll@hse.ie

Assistant National Director, Planning, Monitoring and Evaluation – Bernadette Kiberd

Room G01, Dr Steevens' Hospital, Dublin 8
Tel: 01 635 2661 Fax: 01 635 2245
Email: bernadette.kiberd@hse.ie

Four Area Assistant National Directors, Service Management, are responsible for the efficient and effective delivery of high quality primary, community and continuing care services to the population of each HSE Area. They also provide leadership and line management to the Local Health Managers.

In order to ensure consistency across the 32 Local Health Offices and to utilise on a national basis the knowledge and perspective of the delivery system, each Assistant National Director, Service Management, is assigned national responsibility for designated service areas.

**Assistant National Director, Service Management,
Dublin North East – Tadhg O’Brien**
National Responsibility – Primary Care.

HSE Dublin North East, Gilligan House,
Louth County Hospital, Dundalk, Co. Louth
Tel: 042 938 1384 or 042 938 1385
Email: tadhg.obrien@hse.ie or amanda.tormey@hse.ie

**Assistant National Director, Service Management,
Dublin Mid Leinster – Hugh Kane**
Children & Families and Palliative Care.

Millennium Park, Naas, Co. Kildare
Tel: 045 882 597 or 045 882 577
Email: hugh.kane@hse.ie or sheena.orourke1@hse.ie

Assistant National Director, Service Management, South – Pat Healy
National Responsibility – Older Persons and Social Inclusion.

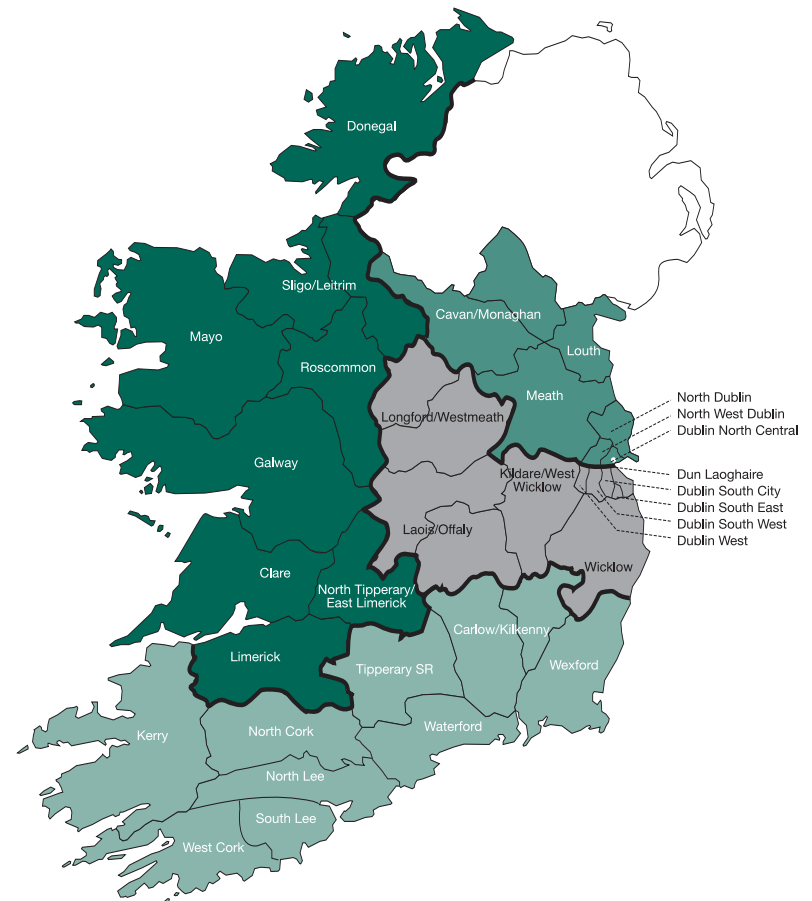
HSE South, Floor 2, Abbeycourt House, Georges Quay, Cork
Tel: 021 492 3818 or 021 492 3957 Email: pat.healy1@hse.ie

Assistant National Director, Service Management, West – Seamus McNulty
National Responsibility – Mental Health and Disabilities.

HSE West, Merlin Park Hospital, Galway
Tel: 091 775 818 Email: seamus.mculty@hse.ie

Local Health Offices

The Local Health Office is often the first port of call for the public to access community services. There are 32 Local Health Offices in Ireland, each with a Local Health Manager. Each Local Health Manager works closely with the hospital managers in their geographic area to ensure that patient/client needs are met. This national focus ensures an integrated system and plays a central role in meeting the objective of delivering consistently high-quality services within each community.



Local Health Managers

HSE Dublin North East

Dublin North West

North of the Liffey as far as Clonsilla, St. Margaret's, Finglas, Blanchardstown, Glasnevin, Castleknock, Cabra

Anne O'Connor – Local Health Manager, Dublin North West
Millhouse Building, Ashtowngate, Dublin 15
Tel: 01 869 3504 Email: anne.oconnor4@hse.ie

North Central Dublin

North of the Liffey to Ballymun, Beaumont, Santry, Drumcondra, Dollymount, Fairview, Clontarf

Noel Mulvihill – Local Health Manager, North Central Dublin
Ballymun Civic Centre, Main Street, Ballymun, Dublin 9
Tel: 01 846 7341 Email: noel.mulvihill@hse.ie

North Dublin

Balbriggan, The Naul, Skerries, Garristown, Oldtown, Lusk, Ballyboghill, Rush, Swords, Malahide, Portmarnock, Darndale, Baldoyle, Coolock, Raheny, Artane, Howth

Pat Dunne – Local Health Manager, North Dublin
Swords Business Campus, Balheary Road, Swords
Tel: 01 813 1867 Email: pat.dunne@hse.ie

Cavan/Monaghan

Leo Kinsella – Local Health Manager, Cavan/Monaghan
Rooskey, Monaghan, Co. Monaghan
Tel: 047 30483 Email: leo.kinsella@hse.ie

Louth

Ann Marie Hoey – Local Health Manager
St. Bridget's Hospital, Ardee, Co. Louth
Tel: 041 686 0736 Email: annmarie.hey@hse.ie

Meath

David Gaskin – Local Health Manager, Meath
Dublin Road, Kells, Co. Meath
Tel: 046 928 0567 Email: david.gaskin@hse.ie

HSE Dublin Mid Leinster

Dun Laoghaire

Dun Laoghaire, Booterstown, Blackrock, Monkstown, Stillorgan, Sallynoggin, Dalkey, Foxrock, Killiney, Cabinteely, Shankill, Loughinstown

Gerard McKiernan – Acting Local Health Manager, Dun Laoghaire
Block B, Civic Centre, Main Street, Bray, Co. Wicklow
Tel: 01 274 4202 Email: gerard.mckiernan1@hse.ie

Dublin South East

Ringsend, Sandymount, Ballsbridge, Ranelagh, Rathmines, Donnybrook, Irish Town, Rathgar, Milltown, Dundrum, Ballinteer, Sandyford, Kiltarnan

David Walsh – Local Health Manager, Dublin South East
Vergemount Hall, Clonskeagh, Dublin 6
Tel: 01 268 0506 Email: david.walsh1@hse.ie

Dublin South City

James's Street, Harolds Cross, Terenure, Rathfarnham, Churchtown, Ballyboden

Ray Kavanagh – A/Local Health Manager, Dublin South City
Meath Community Unit, Heytesbury Street, Dublin 8
Tel: 01 408 5100 Email: ray.kavanagh@hse.ie

Dublin South West

Drimnagh, Crumlin, Walkinstown, Kilnamanagh, Tallaght, Fortunestown

Adrian Charles – Local Health Manager, Dublin South West
HSE Dublin/Mid-Leinster, 52 Broomhill Road, Tallaght, Dublin 24
Tel: 01 463 2800 Email: adrian.charles@hse.ie

Dublin West

Palmerstown, Lucan, Chapelizod, Inchicore, Clondalkin, Milltown, Newcastle, Saggart, Brittas

Fergal Black – Local Health Manager, Dublin West
Cherry Orchard Hospital, Ballyfermot, Dublin 10
Tel: 01 620 6276 Email: fergal.black@hse.ie

Kildare/West Wicklow

Martina Queally – Local Health Manager, Kildare/West Wicklow
Oak House, Millennium Park, Naas, Co. Kildare
Tel: 045 880 419 Email: martina.queally@hse.ie

Wicklow

Marion Meany – A/Local Health Manager, Wicklow
Block B, Civic Centre, Main Street, Bray, Co. Wicklow
Tel: 01 274 4374 Email: marion.meany@hse.ie

Laois/Offaly

Liam O'Callaghan – Local Health Manager, Laois/Offaly
HSE Dublin/Mid-Leinster, Arden Road, Tullamore, Co. Offaly
Tel: 057 935 9780 Email: liam.ocallaghan@hse.ie

Longford/Westmeath

Joe Ruane – Local Health Manager, Longford/Westmeath
HSE Dublin/Mid-Leinster, Primary Care Unit, St. Loman's Hospital Complex
Mullingar, Co. Westmeath
Tel: 044 939 5505 Email: joesph.ruane@hse.ie

HSE West**Galway**

Priya Prendergast – Local Health Manager, Galway
Merlin Park Hospital, Galway
Tel: 091 775 109 Email: priya.prendergast@hse.ie

Mayo

Frank Murray – Local Health Manager, Mayo
St. Mary's, Westport Road, Castlebar, Co. Mayo
Tel: 094 904 9065 Email: frank.murray@hse.ie

Roscommon

Frank Murphy – Local Health Manager, Roscommon
11 Hollywood Grove, Ballaghaderreen, Roscommon
Tel: 094 987 7842 Email: frank.murphy@hse.ie

Donegal

Local Health Manager, Donegal – John Hayes
HSE West, Iona Office Block, Upper Main Street, Ballyshannon, Co. Donegal
Tel: 071 983 4000 Email: john.hayes@hse.ie

Sligo/Leitrim

Pat Dolan – Local Health Manager, Sligo/Leitrim
Manorhamilton, Co. Leitrim
Tel: 071 9820524 Email: patm.dolan@hse.ie

Clare

Dr. Ann Hogan – A/Local Health Manager, Clare
16 Carmody Street, Business Park, Ennis, Co. Clare
Tel: 065 686 3480 Email: annm.hogan@hse.ie

North Tipperary/East Limerick

Bernard Gloster – Local Health Manager, North Tipperary/East Limerick
Holland Road, Plassey, Castletroy, Limerick
Tel: 061 464 060/464 061 Email: bernard.gloster@hse.ie

Limerick

Pat Fitzgerald – A/Local Health Manager, Limerick
31-33 Catherine Street, Limerick
Tel: 061 483 277 Email: pat.fitzgerald@hse.ie

HSE South**Cork – South Lee**

Gretta Crowley – Local Health Manager, Cork – South Lee
HSE South, Abbeycourt House, George's Quay, Cork
Tel: 021 492 3833 Email: grettam.crowley@hse.ie

Cork – North Lee

Dave Drohan – Local Health Manager, Cork – North Lee
HSE South, Abbeycourt House, George's Quay, Cork
Tel: 021 492 3954 Email: dave.drohan@hse.ie

West Cork

Deirdre Scully – Local Health Manager, West Cork
Coolnagarrane, Skibbereen, Co. Cork
Tel: 028 40476 Email: deirdre.scully@hse.ie

North Cork

Ann Kennelly – Local Health Manager, North Cork
Gouldshill House, Mallow, Co. Cork
Tel: 022 30248 Email: ann.kennelly@hse.ie

Carlow/Kilkenny

Anna Maria Lanigan – Local Health Manager, Carlow/Kilkenny
HSE South, Lacken, Dublin Road, Kilkenny
Tel: 056 778 4209 Email: annamaria.lanigan@hse.ie

South Tipperary

Seamus Moore – Local Health Manager, South Tipperary
St. Luke's Hospital, Clonmel, Co. Tipperary
Tel: 052 77015 Email: seamusp.moore@hse.ie

Waterford

Dermot Halpin – Local Health Manager, Waterford
HSE South, Johnstown, Waterford
Tel: 051 846 777 Email: dermot.halpin@hse.ie

Wexford

Pauline Bryan – Local Health Manager, Wexford
HSE South, Ely Hospital, Wexford
Tel: 053 912 3522 Email: pauline.bryan@hse.ie

Kerry

Tom Leonard – Local Health Manager, Kerry
HSE, Rathass, Tralee, Co. Kerry
Tel: 066 718 4549 Email: tomc.leonard@hse.ie

National Hospitals Office

A range of assessment, diagnosis, treatment and rehabilitation services are provided in Ireland's hospitals. Designated national specialist services incorporate areas of care such as heart, lung and liver transplants, bone marrow transplants, spinal injuries, paediatric cardiac services, medical genetics, renal transplantation and haemophilia. Supra-regional services include neurosurgery and cardiac surgery, as well as complex cancer treatments and radiotherapy.

With the establishment of the National Hospitals Office (NHO), acute hospital services are now managed on a single national basis. The NHO manages acute hospital services in 51 hospitals nationally. It also provides Pre-hospital Emergency Care Services (ambulance and emergency response services).

Acute hospitals play a key role in undergraduate and post-graduate training and education for medical and health service professionals. Hospitals are also involved in clinical and related research activities, involving close links with universities and other third level institutions.

National Director – Ann Doherty

Dr. Steevens' Hospital, Dublin 8
Tel: 01 635 2171 Email: marie.cronin@hse.ie or anncm.doherty@hse.ie

Assistant National Director; Pre-Hospital Emergency Care –
 Frank McClintock

Responsible for ensuring the delivery of an integrated high quality national ambulance service to the population, working with seven ambulance services and 93 ambulance stations nationwide.

Millennium Park, Naas, Co. Kildare
 Tel: 045 882 592 Email: frank.mcclintock1@hse.ie or helen.sexton1@hse.ie

Assistant National Director; Contracts and Utilisation – Tom Finn
 Tom's role is to ensure optimum effectiveness and efficiency in the delivery of hospital services.

Mill Lane, Palmerstown, Dublin 20
 Tel: 01 620 1600 Email: tom.finn1@hse.ie

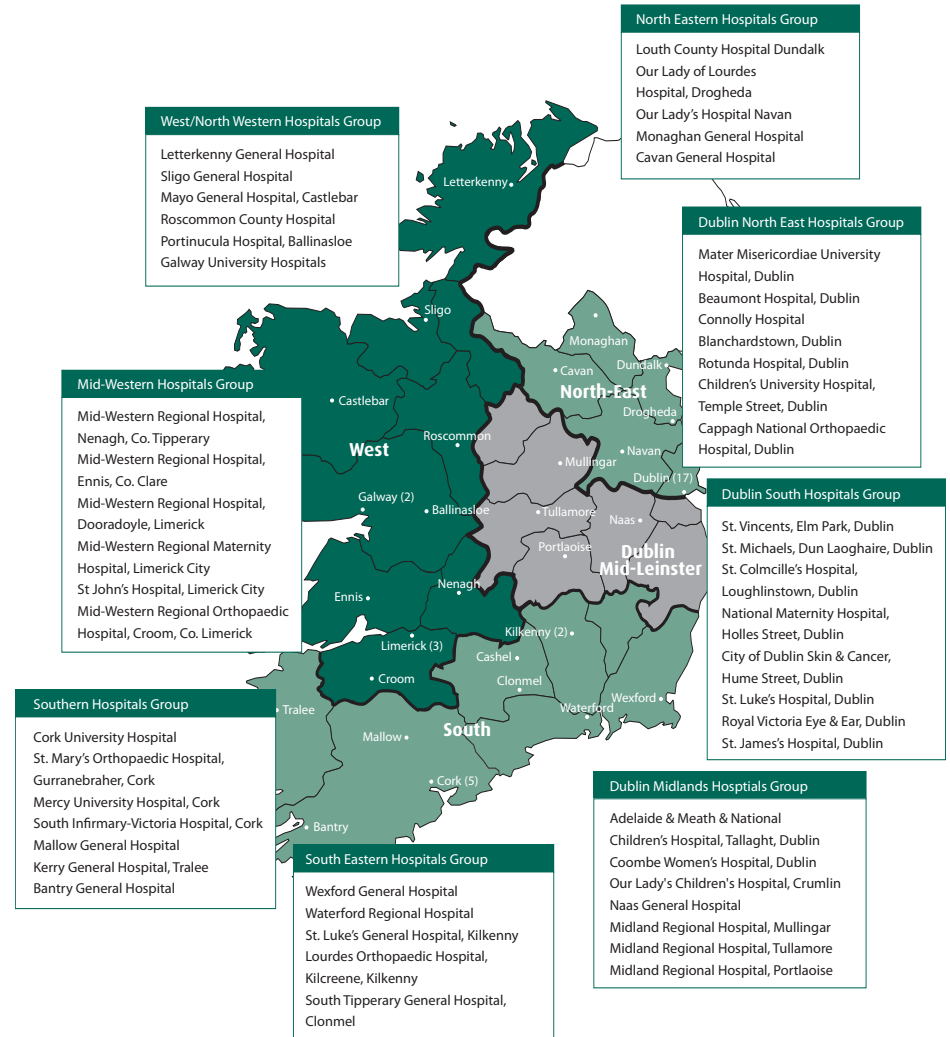
Assistant National Director; Quality, Risk and Consumer Affairs –
 Dr. Mary Hynes
 Mary ensures that issues of quality and risk management for hospital services are identified and managed.

Merlin Park Regional Hospital, Galway
 Tel: 091 775790 Email: marydr.hynes@hse.ie or maryk.oconnor@hse.ie

Assistant National Director; Planning and Development – Fionnuala Duffy
 Fionnuala is responsible for the planning and development of the acute hospital system in line with best practice.

Dr Steevens' Hospital, Dublin 8
 Tel: 01 635 2458 Email: fionnuala.duffy1@hse.ie or carmela.kelly@hse.ie

Hospital Networks



Hospital Network Managers

Hospitals in Ireland are grouped into eight Hospital Groups – two in each administrative area. Each network is managed by a Network Manager.

HSE South

Waterford Regional Hospital. Wexford General Hospital.
St. Luke's General Hospital, Kilkenny. South Tipperary General Hospital.
Lourdes Orthopaedic Hospital, Kilcreene.

South Eastern Hospitals Group Network Manager – Richie Dooley

HSE, Lacken, Dublin Road, Kilkenny
Tel: 056 778 4150 Email: richard.dooley@hse.ie

Cork University Hospital Group. St. Mary's Orthopaedic Hospital, Cork.
Mallow General Hospital. Kerry General Hospital. Mercy University Hospital,
Cork. Bantry General Hospital. South Infirmary-Victoria Hospital, Cork.

Southern Hospitals Group Network Manager – Gerry O'Dwyer

HSE, Áras Slainte, Wilton Road, Cork
Tel: 021 492 3606/7 Email: gerry.odwyer@hse.ie

HSE Dublin North East

Our Lady Of Lourdes Hospital, Drogheda.
Louth County Hospital, Dundalk. Cavan General Hospital.
Monaghan General Hospital. Our Lady's Hospital, Navan.

North Eastern Hospitals Group Network Manager – Stephen Mulvany

HSE, Kells, Co. Meath
Tel: 046 928 0550 Email: stephen.mulvany@hse.ie

Mater Misericordiae Hospital. Beaumont Hospital.
Connolly Hospital, Blanchardstown. Rotunda Hospital.
Children's University Hospital, Temple Street.
Cappagh National Orthopaedic Hospital.

Dublin North Hospitals Group Network Manager – Angela Fitzgerald

HSE, Mill Lane, Palmerstown, Dublin 20
Tel: 01 620 1835 Email: angela.fitzgerald@hse.ie

HSE Dublin Mid Leinster

Adelaide & Meath Incorporating the National Children's Hospital, Tallaght.
Naas General Hospital. Coombe Women's Hospital.
Our Lady's Children's Hospital Crumlin.
Midland Regional Hospital Mullingar. Midland Regional Hospital Tullamore.
Midland Regional Hospital Portlaoise.

Dublin Midlands Hospital Group Network Manager – John Bulfin

HSE, Arden Road, Tullamore, Co. Offaly
Tel: 057 935 9775 Email: john.bulfin@hse.ie

St. Vincent's, Elm Park. St. Michaels, Dun Laoghaire.
St. Colmcille's Hospital, Loughlinstown.
National Maternity Hospital, Holles Street.
Royal Victoria Eye & Ear Hospital. St. James's Hospital.
St. Luke's Hospital, Rathgar.

Dublin South Hospitals Group Network Manager – Louise McMahon

Mill Lane, Palmerstown, Dublin 20
Tel: 01 620 1740 Email: louise.mcmahon@hse.ie

HSE West

Mid Western Regional Hospital, Dooradoyle, Limerick.
Mid Western Regional Maternity Hospital, Limerick.
Mid Western Regional Hospital, Ennis. Mid Western Regional Hospital, Nenagh.
Mid Western Regional Orthopaedic Hospital, Croom.
St. John's Hospital Limerick.

Mid Western Hospitals Group Network A/Manager – John Hennessy

HSE, 31/33 Catherine Street, Limerick
Tel: 061 483 331 Email: john.hennessy@hse.ie

Sligo General Hospital. Letterkenny General Hospital.
Galway University Hospitals.
Mayo General Hospital. Roscommon County Hospital. Portiuncula Hospital.

Western Hospital Group Manager - Alan Moran

HSE West Merlin Park Galway
Tel: 091 775 474 Email: alan.moran@hse.ie

Hospital Managers & Chief Executives

South Eastern Hospitals Group

Waterford Regional Hospital
Dunmore Road, Waterford
Patricia Sullivan
Tel: 051 848 000

St. Luke's General Hospital
Freshford Road, Kilkenny
Anne Slattery
Tel: 056 778 5000

Wexford General Hospital
Newtown Road, Wexford
Teresa Hanrahan
Tel: 053 915 3000

Lourdes Orthopaedic Hospital
Kilcreene, Co. Kilkenny
Anne Slattery
Tel: 056 778 5500

South Tipperary General Hospital
Western Road, Clonmel,
Co. Tipperary
Breda Kavanagh
Tel: 052 77000

Southern Hospitals Group

Cork University Hospital Group
Wilton, Cork
Tony McNamara
Tel: 021 454 6400

– Cork University Maternity Hospital
Wilton, Cork
Mary Barry
Tel: 021 492 0500

– St. Mary's Orthopaedic Hospital
Gurrabraher Cork
Michael Murphy
Tel: 021 430 3264

– Mallow General Hospital
Mallow Co. Cork
Tony Gosnell
Tel: 022 30300

Kerry General Hospital
Tralee, Co. Kerry
Margie Lynch
Tel: 066 718 4000

Bantry General Hospital
Bantry, Co. Cork
Eleanor O'Donovan
Tel: 027 52905

Mercy Hospital Cork
Grenville Place, Cork
Pat Madden
Tel: 021 427 1971

South Infirmity Victoria
University Hospital
Old Blackrock Road, Cork
Ger O'Callaghan
Tel: 021 492 6100

North Eastern Hospitals Group

Our Lady of Lourdes Hospital
Drogheda, Co. Louth
Des O'Flynn
Tel: 041 983 7601

Louth County Hospital
Dundalk, Co. Louth
Róisín Maguire
Tel: 042 933 4701

Cavan General Hospital
Dermot Monaghan
Tel: 049 437 6000

Monaghan General Hospital
Dermot Monaghan
Tel: 047 81811

Our Lady's Hospital
Navan, Co. Meath
Seamus O'Shea
Tel: 046 907 8509

Western Hospital Group

University Hospital Galway
Merlin Park University Hospital
Bridget Howley
Tel: 091 554 544 / 775 775

Merlin Park Regional Hospital
Galway
Bridget Howley
Tel: 091 775 775

Mayo General Hospital
Castlebar, Co. Mayo
Tony Canavan
Tel: 094 021 733

Roscommon County Hospital
Roscommon
Susan Temple
Tel: 090 662 6200

Portiuncula Hospital
Ballinasloe, Co. Galway
Bridgetta McHugh
Tel: 090 964 8200

Sligo General Hospital
The Mall, Sligo
Sheila Smith
Tel: 071 917 1111

Letterkenny General
Letterkenny,
Co. Donegal
Sean Murphy
Tel: 074 912 5888

Mid-Western Hospitals Group

Mid-Western Regional Hospital
Dooradoyle, Limerick
Mark Sparling
Tel: 061 301 111

Mid-Western Regional,
Orthopaedic, Croom
Co. Limerick
Anne Fitzpatrick
Tel: 061 397 276

Mid-Western Regional,
Maternity Hospital
Ennis Road, Limerick
Eamonn Leahy
Tel: 061 327 455

Mid-Western Regional Hospital,
Ennis, Co. Clare
John Doyle
Tel: 065 682 4464

Mid-Western Regional Hospital
Nenagh, Co. Tipperary
Frank Keane (Acting)
Tel: 067 31491

St. John's Hospital Limerick
Tim Kennelly
Tel: 061 462 222

Dublin South Hospitals Group

St. Vincent's Hospital
Elm Park, Dublin 4
Nicky Jermyn
Tel: 01 277 4000

St. Michaels Hospital
Dun Laoghaire, Co. Dublin
Seamus Murtagh
Tel: 01 280 6901

St. Colmcille's Hospital
Loughlinstown, Co. Dublin
Tom Mernagh
Tel: 01 282 5800

National Maternity Hospital
Holles Street, Dublin 2
Master - Dr. Michael Robson
Tel: 01 637 3100

St. Luke's Hospital
Rathgar, Dublin 6
Ann Broekhaven
Tel: 01 406 5000

Royal Victoria Eye & Ear
Adelaide Road, Dublin 2
Aida Whyte
Tel: 01 664 4600

St. James's Hospital
James Street, Dublin 8
Ian Carter
Tel: 01 410 3000

Dublin Midlands Hospital Group

Adelaide & Meath Hospital
Inc. The National Children's Hospital
Tallaght, Dublin 24
Michael Lyons
Tel: 01 414 2000

Naas General Hospital
Naas Co. Kildare
Michael Knowles
Tel: 045 897 221

Coombe Womens Hospital
Dolphins Barn, Dublin 8
Master – Dr. Chris Fitzpatrick
Tel: 01 408 5200

Our Lady's' Hospital for
Sick Children
Crumlin Dublin 12
Lorcan Birthistle
Tel: 01 409 6100

Midland Regional Hospital, Mullingar
Co. Westmeath
Trevor O'Callaghan
Tel: 044 934 0221

Midland Regional Hospital,
Tullamore, Arden Road,
Tullamore, Co. Offaly
Peter Waters
Tel: 057 932 1501

Midland Regional Hospital,
Portlaoise, Co. Laois
Declan McCormack
Tel: 057 862 1364

Dublin North Hospital Group

Mater Misericordiae University
Hospital
Eccles Street, Dublin 7
Brian Conlan
Tel: 01 803 2000

Beaumont Hospital
Beaumont Dublin 9
Liam Duffy
Tel: 01 809 3000

Connolly Hospital
Blanchardstown
Dublin 15
Shay Smyth
Tel: 01 646 5000

Cappagh National Orthopaedic
Hospital
Finglas Dublin 11
Aidan Gleeson
Tel: 01 814 0400

Children's University Hospital
Temple Street
Dublin 1
Paul Cunniffe
Tel: 01 878 4200

Rotunda Hospital
Parnell Street, Dublin 1
Master – Dr. Michael Geary
Tel: 01 873 0700

Human Resources

The HSE is the largest employer in the state, with over 67,000 direct employees, and a further 35,000 employed by agencies funded by the HSE.

The key role of HR is to ensure that the HSE has the right number of people, with the right skills, in the right place, and at the right time. This involves managing staff turnover. It also requires focusing on staff training and paying particular attention to recruiting specialist disciplines.

National Director of Human Resources – Martin McDonald

Dr. Steevens' Hospital, Dublin 8
Tel: 01 635 2319 Email: nationalhr@hse.ie

Assistant National Director; Operations – John Smith

Dr. Steevens' Hospital, Dublin 8
Tel: 01 635 2255 Email: john.smith1@hse.ie

Assistant National Director; Performance and Development – Jim Fleming

26 Harcourt Street, Dublin 2
Tel: 01 475 4044 Email: jim.fleming@hse.ie

Assistant National Director Professional Education & Development –

John Magner

Lacken, Dublin Road, Kilkenny
Tel: 056 778 4118 Email: johng.magner@hse.ie

Assistant National Director; Organisation Design and Development –

Síle Fleming

Mill Lane, Palmerstown, Dublin 20
Tel: 01 620 1679 Email: sile.fleming@hse.ie

Assistant National Director – Brian Kirwan

20-23 Merchants Quay, Dublin 8
Tel: 01 881 7039 Email: brian.kirwan@hse.ie

Assistant National Director of Human Relations Employee Relations –

Norah Mason

Mill Lane, Palmerstown, Dublin 20
Tel: 01 620 1764 Email: norah.mason@hse.ie

Head of National Employment Monitoring Unit – Frank O'Leary

Oak House, Millennium Park, Naas, Co. Kildare
Tel: 045 880 454 Email: frank.oleary@hse.ie

Nursing Services Director – Dr. Siobhan O'Halloran

Performance and Development, 26 Harcourt Street, Dublin 2
Tel: 01 475 4044 Email: siobhan.ohalloran@hse.ie

There is an Assistant National Director of HR in each of the HSE Areas, who will support service managers and provide quality assurance of HR services.

Assistant National Director, Dublin Mid Leinster – Larry Bane

Arden Road, Tullamore, Co. Offaly
Tel: 057 935 9828 Email: larry.bane@hse.ie

Assistant National Director, Dublin North East – Rosarii Mannion

Kells, Co. Meath
Tel: 046 928 2764 Email: Rosarii.Mannion@hse.ie

Assistant National Director, South – Barry O'Brien

Áras Slainte, Wilton Road, Cork
Tel: 021 492 3610 Email: barry.obrien1@hse.ie

Assistant National Director, West – Francis Rogers

Manorhamilton, Co. Leitrim
Tel: 071 982 0516 Email: francis.rogers@hse.ie

Finance

The overall aim of the Finance Directorate is to provide strategic and operational financial support and advice to the various streams of the Health Service Executive in achieving the organisational goals of providing high quality, integrated health and personal social services.

The objectives of the finance team are to manage the finances of the HSE, to deliver enhanced accountability and value for money, to develop a standardised Financial Management framework for the HSE.

National Director – Liam Woods

Millennium Park, Naas, Co. Kildare

Tel: 045 882 563 Email: liam.woods@hse.ie or sylvia.nolan@hse.ie

Assistant National Director, Annual Financial Statements and Governance – Valerie Plant

Millennium Park, Naas, Co. Kildare

Tel: 045 882 512 Email: valerie.plant@hse.ie

Assistant National Director, Vote and Treasury – Paddy McDonald

Stewart House, Lonsdale Road, Plassey Technology Park, Limerick

Tel: 061 464 338 Email: paddy.mcdonald@hse.ie

Assistant National Director of Finance, Corporate Reporting & Budgeting – Maureen Cronin

Millennium Park, Naas, Co. Kildare

Tel: 045 882 578 Email: maureen.cronin@hse.ie

Assistant National Director – Kieran Madden

Millennium Park, Naas, Co. Kildare

Tel: 045 882 512 Email: Kieran.Madden1@hse.ie

Assistant National Director, Capital – Mark Fagan

Mill Lane, Palmerstown, Dublin 20

Tel: 01 620 1600 Email: mark.fagan@hse.ie

Assistant National Director, Primary Care Reimbursement Services –

Paddy Burke

Exit 5, M50, North Road, Finglas, Dublin 11

Tel: 01 834 3644 Email: patrick.burke@hse.ie

Assistant National Director Finance Joint Programme Manager North East Transformation & Hospital Network Manager North East Hospitals

– Stephen Mulvany

Ardee Business Park, Hale Street, Ardee, Co. Louth

Tel: 041 687 1502 Email: stephen.mulvany@hse.ie

Assistant National Director, Value For Money – Yvonne O'Neill

Millennium Park, Naas, Co. Kildare

Tel: 045 880 444 Email: yvonne.oneill@hse.ie

Assistant National Director of Finance – Damian Casey

Parkgate Street Business Centre, Dublin 8

Tel: 01 635 2893 Email: damian.casey@hse.ie

Assistant National Director of Finance, Dublin Mid Leinster – Declan Lyons

Millennium Park, Naas, Co. Kildare

Tel: 045 880 418 Email: declan.lyons1@hse.ie

Assistant National Director of Finance, South – Raymonde O'Sullivan

Cork Farm Centre, Wilton Road, Cork

Tel: 021 492 3614 Email: sheila.oshea@hse.ie

Assistant National Director of Finance, West – Liam Minihan

Merlin Park Regional Hospital, Galway

Tel: 091 775 441 Email: liam.minihan@hse.ie

Assistant National Director of Finance (Acting), Dublin North East

– Joe Sheeky

Swords Business Campus, Swords Co. Dublin

Tel: 01 813 1800 Email: joe.sheeky@hse.ie

Information and Communication Technology (ICT)

ICT provides essential support for all administrative and support services and, increasingly, patient care delivery. It embraces all voice, video and data communications technologies and provides one central management point for all purchases of hardware, software, telecommunications, ICT development and advisory services.

A new ICT organisation structure is in the course of being implemented. Pending its implementation an interim structure has been put in place to ensure that ICT is aligned to the current HSE organisational structure. This is based on existing ICT Directors taking a leadership role in addition to their existing area responsibilities. In due course it is expected that a National Director of ICT will be appointed along with a number of additional Assistant National Directors.

Head of ICT Operations – Damien McCallion

Parkgate Street Business Centre, Dublin 8
Tel: 01 635 2500 Email: damien.mccallion@hse.ie

Assistant National Director, National Lead, Operations – Paul McSweeney

Dr. Steevens' Hospital, Dublin 8
Tel: 01 635 2735 Email: paul.mcsweeney@hse.ie

Director of Information Services, National Lead, PCCC – Richard McMahan

31-33 Catherine Street, Limerick
Tel: 061 483276 Email: richardt.mcmahan@hse.ie

Director of Information Services, National Lead, NHO – Seamus Butler

Lacken, Dublin Road, Kilkenny
Tel: 056 778 4100 Email: seamus.butler@hse.ie

Director of Information Services, National Lead, Corporate – Fran Thompson

Dr. Steevens' Hospital, Dublin 8
Tel: 01 635 2735 Email: fran.thompson@hse.ie

Director of Information Services, HSE South – Jack Somers

Cork Farm Centre, Cork
Tel: 021 492 3605 Email: jack.somers@hse.ie

Director of Information Services, HSE West – Darach Glennon

Merlin Park, Galway
Tel: 091 775 366/7 Email: darach.glennon@hse.ie

A/Director of Information Services, HSE North West – Mary Corrigan

Manorhamilton, Co. Leitrim
Tel: 071 982 0400 Email: mary.corrigan@hse.ie

A/Director of Information Services, HSE Dublin North Leinster –

Michael Redmond
Kells, Co. Meath
Tel: 046 928 2500 Email: michael.redmond@hse.ie

A/Director of Information Services, HSE Dublin Mid Leinster –

Denis Maher
Block 4, Central Business Park, Clonminch, Tullamore, Co. Offaly
Tel: 057 935 7900 Email: denis.maher@hse.ie

Procurement

The overall objective of the Procurement Directorate is to ensure effective support for patient care and the achievement of value for money through best practice procurement.

Head of Procurement Operations – Leo Stronge

Central Business Park, Clonminch, Tullamore, Co. Offaly
Tel: 057 935 7680 Email: leo.stronge@hse.ie

Assistant National Director Procurement, Business and Support Services –

Brian Long
Ballycummin Avenue, Raheen Industrial Estate, Limerick
Tel: 061 464 074 Email: brian.long1@hse.ie

Assistant National Director Procurement, Portfolio and Category Management –

John O'Donovan
St. Finbarrs Hospital, Douglas Road, Cork
Tel: 021 492 3056 Email: john.odonovan@hse.ie

Assistant National Director Procurement, Transition – Anton Murphy
Unit 3, Finisklin Business Park, Sligo
Tel: 071 982 0528 Email: anton.murphy@hse.ie

Assistant National Director Procurement, Logistics and Inventory Management – John Swords
Dr. Steevens' Hospital, Dublin 8
Tel: 01 635 2251 Email: john.swords@hse.ie

Assistant National Director, Procurement – Sean Bresnan
Dr. Steevens' Hospital, Dublin 8
Tel: 01 813 1800 Email: sean.bresnan@hse.ie

Assistant National Director Procurement - Julie Ryan
Tipperary Technology Park, Rosanna Road, Tipperary, Co. Tipperary
Tel: 062 82273 Email: julie.ryan@hse.ie

Estates

Estate Management manages the organisation's €10 billion capital infrastructure and the annual capital plan.

National Director – Brian Gilroy
2/3 Parnell Square East, Dublin 1
Tel: 01 871 7000 Email: brian.gilroy@hse.ie

Assistant National Director HSE Dublin Mid-Leinster - Jim Curran
26-29 Old Kilmainham Dublin 8
Tel: 01 472 1710 Email: Jimm.curran@hse.ie

Assistant National Director HSE Dublin North East – Peter Smyth
Technical Services Department, Climber Hall, Oldcastle Road, Kells, Co. Meath
Tel: 046 928 0410 Email: peter.smyth@hse.ie

Assistant National Director, HSE West – Joseph Molloy
Technical Services Department, Merlin Park Regional Hospital, Galway
Tel: 091 775 435 Email: joe.molloy@hse.ie

Assistant National Director, HSE South – Michael Murphy
Technical Services Department, Unit 2A South Ring Business Park,
Kinsale Road, Cork
Tel: 021 492 7212 Email: michael.murphy2@hse.ie

Assistant National Director Capital – John Browner
2/3 Parnell Square, Dublin 1
Tel: 01 472 1710 Email: john.browner@hse.ie

Assistant National Director Property – Clifford Campbell
2-3 Parnell Square, Dublin 1
Tel: 01 871 71000 Email: clifford.campbell@hse.ie

Assistant National Director, Quality, Health,
Safety and Environment – Peter Ryan
Lacken, Dublin Road, Kilkenny
Tel: 056 778 4126 Email: peterg.ryan@hse.ie

Internal Audit

Audit is responsible for ensuring that a comprehensive programme of audit work is carried out annually throughout the HSE. The purpose of this work is to provide assurance that controls and procedures are operated in accordance with best practice and with the appropriate regulations. The HSE Audit Committee monitors the work of the Audit Directorate.

National Director – Michael Flynn
1st Floor Corrigan House, Fenian Street, Dublin 2
Tel: 01 611 4860 Email: michael.flynn@hse.ie

Assistant National Director – Geraldine Smith
Tel: 01 603 8912 Email: geraldine.smith@hse.ie

National Director of Corporate Planning and Control Processes

This Directorate is responsible for driving corporate planning by adopting best practice processes and methodologies and providing a project management capability. The Directorate is responsible for leading the preparation of the HSE's Corporate and Service Plans and ensuring that the HSE complies with its legislative requirements in relation to planning and monitoring.

Assistant National Director of Corporate Planning and Control Processes – Jane Carolan
Parkgate Street Business Centre, Dublin 8
Tel: 01 635 2889 Email: jane.carolan@hse.ie

Strategic Planning, Reform and Implementation (SPRI)

SPRI provides support to individual Directorates in delivering the HSE Transformation Programme. These supports fall into 5 main areas; Portfolio Management, Programme and Project Management, Process Development, Corporate Performance Measurement and Decision Support.

Chairperson – Maureen Lynott

Health Service Executive, Dr. Steevens' Hospital, Dublin 8
Tel: 01 635 2000

Head of SPRI – Kevin McConville

Health Service Executive, Swords Business Campus,
Balheary Road, Swords, Co. Dublin
Tel: 01 813 1820 Email: kevin.mcconville@hse.ie

Corporate Performance Measurement – Bernie Hyland

Health Service Executive, Parkgate Street Business Centre, Dublin 8
Tel: 01 635 2959 Email: bernie.hyland@hse.ie

Decision Support Unit – Mark Turner

Health Service Executive, Parkgate Street Business Centre, Dublin 8
Tel: 01 635 2968 Email: mark.turner@hse.ie

Portfolio Management Unit – Patrick Lynch

Unit 8/9 Manor Street, Business Park, Manor Street, Dublin 7
Tel: 01 867 6105 Email: patrick.lynch@hse.ie

Process Development – John Kenny

Unit 8/9 Manor Street, Business Park, Manor Street, Dublin 7
Tel: 01 867 6105 Email: john.kenny@hse.ie

Programme & Project Management Support Unit – Joe Ryan

Health Service Executive, Swords Business Campus,
Balheary Road, Swords, Co. Dublin
Tel: 01 813 1820 Email: joe.ryan@hse.ie

Process and Operations

The Head of Process and Operations will ensure co-ordination of major programmes of reform and better sequencing of the HSE's initiatives and resources.

Head of Process and Operations – Seán Hurley

Áras Slainte, Wilton Road, Cork
Tel: 021 492 3601 Email: suzanne.sisk@hse.ie

Corporate Pharmaceutical Unit

The Pharmaceutical Unit promotes best practice across the organisation in relation to the use of drugs and medical devices. It will be responsible for evaluating the many schemes that exist in relation to the provision of drugs and devices for patients.

Head of the Corporate Pharmaceutical Unit – Prof. Kamal Sabra

Dr. Steevens' Hospital, Dublin 8
Tel: 01 635 2500 Email: kamal.sabra@hse.ie

Winter Initiative Project Team

The purpose of the Winter Initiative is to ensure that the extra demands placed on the health system during the winter season do not result in a reduction in the quality of services we provide to our clients, particularly in relation to A+E Departments. The initiative will involve a coordinated approach from the National Hospitals Office, Primary Community and Continuing Care, and Population Health.

National Director (Temporary) – John O'Brien

31/33 Catherine Street, Limerick
Tel: 061 483 286 Email: john.obrien1@hse.ie

Health Information & Quality Authority

A key policy aim of the Health Strategy, Quality and Fairness (2001) is to deliver high quality services that are based on evidence supported best practice. In order for the reformed health service to base planning and policy making on world-class standards, it is essential to ensure that high quality information is available to the system. The Health Information and Quality Authority is the first truly independent Authority working to assure that Ireland's health services are delivered to world class standards.

The Health Information and Quality Authority was established in May 2007 as part of the government's health reform programme. HIQA is an independent Authority, with broad ranging functions and powers reporting to the Minister for Health. HIQA has been set up to drive quality, safety, accountability and the best use of resources in our health and social care services, whether delivered by public, voluntary or private bodies.

HIQA will set the standards for delivering health and social care services and will continuously inspect to ensure that these standards are being met. HIQA will take action if there's a risk to the safety of any person using our health services. Inspection reports will be published so that the public can make informed choices when seeking care. HIQA will help deliver value for money by monitoring that the resources in our health and social services are used in a way which delivers the best outcome for the patient or service user.

The Social Services Inspectorate (SSI) and the Irish Health Services Accreditation Board (IHSAB) have been integrated into the new Authority. The former SSI has expanded powers in the Office of the Chief Inspectorate for Social Services while the former IHSAB continues its valuable work of accreditation as part of our Healthcare Quality function.

HIQA's mandate will apply to the public, voluntary and private sectors.

The key areas of responsibility for HIQA will be:

- Developing health information systems;
- Promoting and implementing structured programmes of quality assurance;
- Overseeing accreditation;
- Developing health technology assessment; and
- Reviewing and reporting on selected services.

HIQA will work in co-operation with a wide range of parties, including Patients, Clients and Carers, Health Professionals, Academic Institutions and International Bodies.

The public can expect HIQA's role to inform them on what standard of service to expect, assure them on what standards of care are being delivered, and empower them to get involved in the planning and review of service delivery.

Chief Executive – Dr. Tracey Cooper
Interim Health Information and Quality Authority
7 Eastgate Avenue, Eastgate, Little Island, Co. Cork
Tel: 01 635 4118 or 021 230 4162
www.hiqa.ie

The Department of Health & Children

The Department of Health and Children has a dual role in the new structure which includes focussing on strategic and policy issues (by reducing its involvement in day to day matters) and having ultimate responsibility for holding the service delivery system to account for its performance.

The Department's mission is:

To support, protect and empower individuals, families and their communities to achieve their full health potential by putting health at the centre of public policy and by leading the development of high quality, equitable and efficient health and personal social services.

The Department will provide leadership as a champion for "health" across all sectors. To achieve this it will continue to work in partnership with, and also to provide leadership to, the healthcare system in the provision of health and personal social services.

The Department's role is to support the Minister and the democratic process by:

Formulating policy underpinned by an evidence-based approach and providing direction on national health priorities ensuring that quality and value for money are enhanced through the implementation of an evidence-based approach underpinned by monitoring and evaluation.

Protecting the interests of patients and consumers and supporting practitioners and professionals to practise to the highest standards by providing a prudent and appropriate regulatory framework.

Providing effective stewardship over health resources by demanding accountability for achieving outcomes including financial, managerial and clinical accountability, and by providing the frameworks, including enhanced service planning at national level to improve the overall governance of the health system.

Fulfilling obligations in relation to EU, WHO, Council of Europe and other international bodies and the continued implementation of the co-operation agenda decided by the North-South Ministerial Council.

Department of Health and Children
Hawkins House, Hawkins Street, Dublin 2
Tel: 01 635 4000 Local: 1890 200 31 1
Fax: 01 635 4001 www.doh.ie

HSE infoline: Callsave 1850 24 1850

The Health Service Executive provides a national information service, the HSE infoline, which offers everyone in Ireland easy access to information on over 110 health and social service topics, all for less than the cost of a local call.

The service can provide confidential information on a wide range of queries, like:

- Medical Cards
- GP Visit Cards
- European Health Insurance Card
- Drugs Payment Scheme
- Long-Term Illness Scheme
- Back to School Clothing and Footwear Scheme
- Home Help Services
- Nursing Home Subvention
- Health Promotion literature.

The HSE infoline can also advise on health services, entitlements, eligibility, application forms and contact details for services across the country.

Information is also made available via email or fax, and the infoline offers a sigma text-pad facility for people with a hearing impairment.

The HSE Infoline operates from 8.00am to 8.00pm Monday to Saturday.

YOU CAN CONTACT THE HSE INFOLINE ON:

Callsave: 1850 24 1850

Fax: (041) 685 0330

Email: info@hse.ie

HSE infoline: 1850 241850 www.hse.ie

This booklet was compiled by HSE Public Communications
Tel: 01 635 2894 Email: fidelma.browne@hse.ie

For updates, check the online edition on www.hse.ie