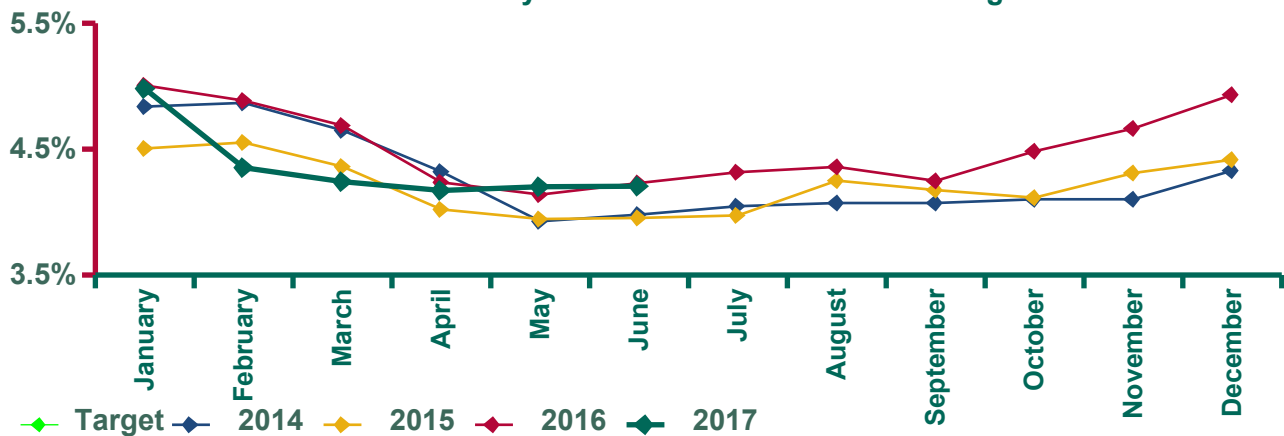


Health Service Absence Rate- by Staff Category

Month	Medical /Dental	Nursing	Health & Social Care	Management Admin	General Support	Patient & Client Care	Overall	Certified
June	1.3%	4.6%	3.1%	3.6%	5.1%	5.6%	4.2%	90.3%
May	1.2%	4.6%	3.0%	3.7%	5.3%	5.8%	4.2%	89.6%
April	1.1%	4.6%	3.1%	3.7%	5.2%	5.5%	4.2%	89.3%
March	1.2%	4.6%	3.2%	4.0%	5.3%	5.5%	4.2%	89.0%
February	1.2%	4.7%	3.4%	4.0%	5.5%	5.6%	4.4%	88.2%
January	1.1%	5.3%	3.9%	4.9%	6.2%	6.6%	5.0%	87.8%
2017	1.2%	4.7%	3.3%	4.0%	5.4%	5.8%	4.4%	89%
December	1.3%	5.5%	4.0%	4.6%	5.6%	6.3%	4.9%	85.2%
November	1.2%	5.1%	3.6%	4.3%	5.0%	6.1%	4.7%	86.9%
October	1.2%	4.8%	3.5%	4.4%	5.2%	6.0%	4.5%	87.0%
September	1.2%	4.6%	3.2%	3.9%	5.2%	5.6%	4.2%	88.3%
August	1.1%	4.9%	3.4%	3.7%	4.8%	6.0%	4.4%	89.0%
July	1.0%	4.8%	3.4%	3.8%	5.2%	5.6%	4.3%	89.7%
June	1.2%	4.7%	3.5%	3.5%	4.8%	5.6%	4.2%	88.5%
May	1.2%	4.5%	3.4%	3.8%	4.6%	5.3%	4.1%	87.8%
April	1.3%	4.7%	3.3%	3.7%	4.7%	5.3%	4.2%	87.7%
March	1.2%	5.1%	3.7%	4.3%	5.6%	6.1%	4.7%	86.5%
February	1.4%	5.3%	4.0%	5.0%	5.5%	4.5%	4.9%	85.5%
January	1.3%	5.5%	4.0%	4.8%	5.5%	6.1%	5.0%	86.3%
2016	1.2%	5.0%	3.6%	4.1%	5.1%	5.7%	4.5%	87%
December	1.2%	5.0%	3.6%	3.8%	5.3%	5.2%	4.4%	86.4%
November	1.1%	4.6%	3.6%	4.0%	5.2%	5.6%	4.3%	87.8%
October	1.1%	4.4%	3.5%	3.8%	5.3%	5.4%	4.1%	88.0%
September	1.3%	4.4%	3.4%	4.1%	4.9%	5.3%	4.2%	87.6%
August	1.2%	4.6%	3.5%	3.8%	4.8%	5.6%	4.3%	88.3%
July	1.1%	4.3%	3.2%	3.4%	4.7%	5.3%	4.0%	88.6%
June	1.2%	4.4%	3.0%	3.6%	4.6%	5.0%	4.0%	87.0%
May	1.0%	4.4%	3.1%	3.5%	4.8%	4.8%	3.9%	84.7%
April	1.0%	4.4%	2.9%	3.5%	4.9%	5.1%	4.0%	86.4%
March	1.1%	4.6%	3.4%	4.1%	5.2%	5.5%	4.4%	86.3%
February	1.3%	4.9%	3.7%	4.4%	5.3%	5.7%	4.6%	85.8%
January	1.0%	5.0%	3.5%	4.1%	5.3%	5.7%	4.5%	87.2%
2015	1.1%	4.6%	3.4%	3.9%	5.0%	5.4%	4.2%	87%
2014	1.2%	4.6%	3.5%	4.4%	4.8%	5.2%	4.3%	90%
Target							3.5%	100%

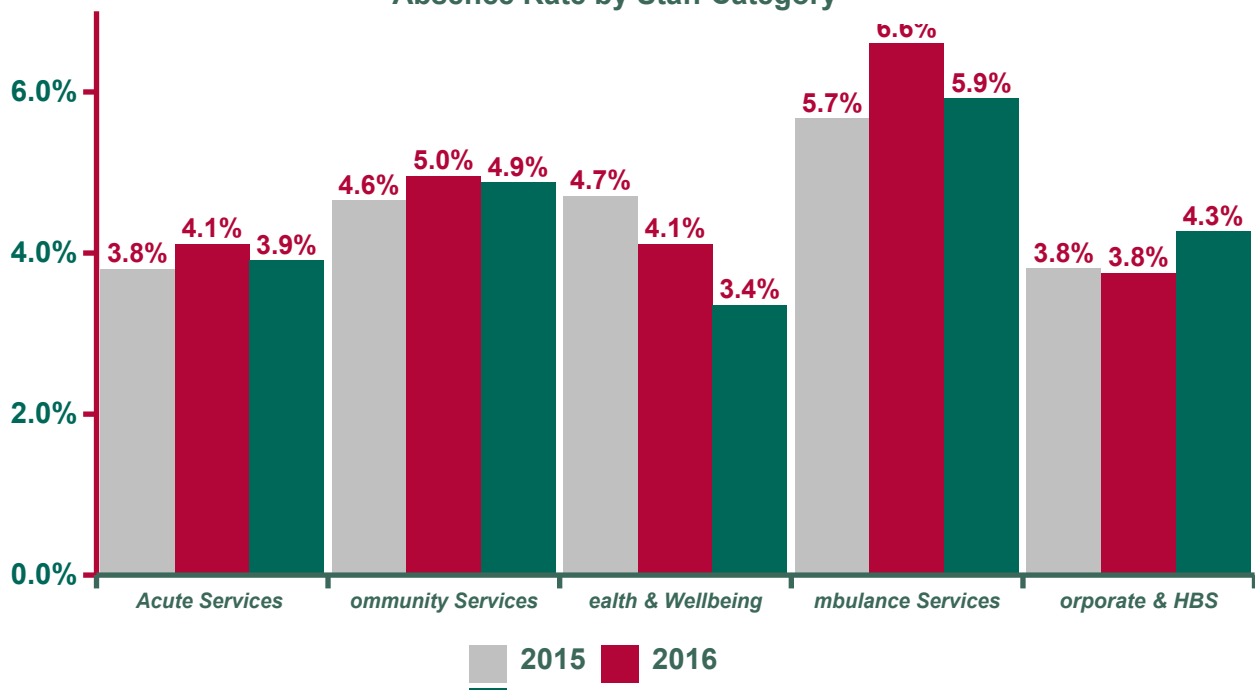
Absence Rate levels by month 2014- 2017 / National Target



Health Service Absence Rate- by Staff Category

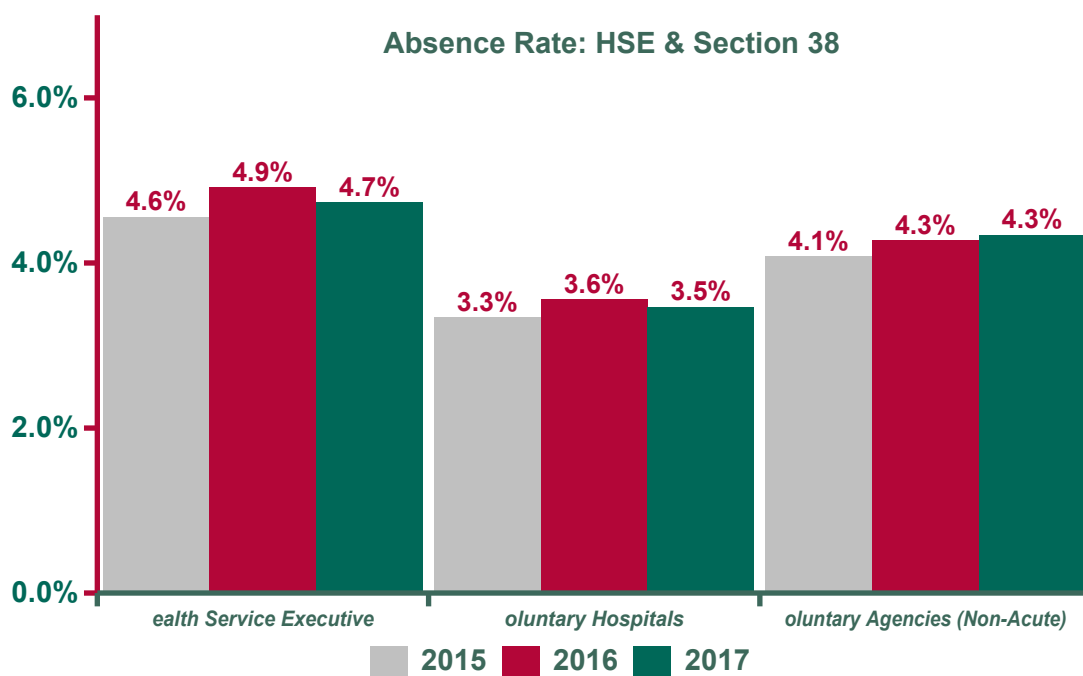
	Acute Services	Community Services	Health & Wellbeing	Ambulance Services	Corporate & HBS	Overall	Certified
June	3.8%	4.7%	3.7%	5.2%	3.6%	4.2%	90.3%
May	3.7%	4.8%	2.8%	5.4%	3.7%	4.2%	89.6%
April	3.7%	4.7%	3.2%	5.8%	4.3%	4.2%	89.3%
March	3.7%	4.8%	2.8%	5.8%	3.8%	4.2%	89.0%
February	4.0%	4.8%	3.9%	6.2%	4.5%	4.4%	88.2%
January	4.5%	5.5%	4.4%	7.2%	5.8%	5.0%	87.8%
2017	3.9%	4.9%	3.4%	5.9%	4.3%	4.4%	89.0%
December	4.5%	5.3%	3.8%	6.9%	4.9%	4.9%	85.2%
November	4.2%	5.2%	3.8%	6.4%	4.0%	4.7%	86.9%
October	4.1%	4.9%	3.5%	6.1%	4.1%	4.5%	87.0%
September	3.9%	4.7%	3.6%	5.1%	3.1%	4.2%	88.3%
August	3.9%	4.9%	3.5%	7.1%	3.0%	4.4%	89.0%
July	3.9%	4.8%	4.1%	5.8%	3.4%	4.3%	89.7%
June	3.9%	4.6%	3.7%	6.0%	3.2%	4.2%	88.5%
May	3.7%	4.6%	3.4%	5.1%	3.4%	4.1%	87.8%
April	3.8%	4.7%	4.0%	6.2%	3.3%	4.2%	87.7%
March	4.2%	5.2%	5.5%	7.5%	3.6%	4.7%	86.5%
February	4.5%	5.2%	5.1%	8.0%	4.5%	4.9%	85.5%
January	4.6%	5.3%	5.1%	8.5%	4.4%	5.0%	86.3%
2016	4.1%	5.0%	4.1%	6.6%	3.8%	4.5%	87.3%
December	3.9%	4.8%	5.0%	9.1%	4.5%	4.4%	86.4%
November	3.8%	4.8%	4.4%	7.7%	3.8%	4.3%	87.8%
October	3.6%	4.7%	4.3%	6.1%	3.6%	4.1%	88.0%
September	3.8%	4.5%	4.2%	6.3%	4.6%	4.2%	87.6%
August	3.8%	4.7%	4.8%	6.8%	3.8%	4.3%	88.3%
July	3.5%	4.5%	4.4%	5.4%	3.1%	4.0%	88.6%
June	3.6%	4.3%	4.3%	4.4%	3.5%	4.0%	87.0%
May	3.6%	4.3%	4.8%	2.9%	3.5%	3.9%	84.7%
April	3.7%	4.5%	4.6%	3.7%	3.6%	4.0%	86.4%
March	3.9%	4.8%	6.3%	5.3%	3.8%	4.4%	86.3%
February	4.2%	4.9%	5.8%	4.2%	4.2%	4.6%	85.8%
January	4.1%	5.0%	4.8%	5.9%	3.7%	4.5%	87.2%
2015	3.8%	4.6%	4.7%	5.7%	3.8%	4.2%	87.0%

Absence Rate by Staff Category



Health Service Absence Rate- HSE & Section 38

	Health Service Executive	Voluntary Hospitals	Voluntary Agencies (Non-Acute)	Overall	Certified
June	4.64%	3.22%	4.11%	4.2%	90.3%
May	4.57%	3.27%	4.28%	4.2%	89.6%
April	4.54%	3.21%	4.24%	4.2%	89.3%
March	4.58%	3.36%	4.33%	4.2%	89.0%
February	4.69%	3.65%	4.20%	4.4%	88.2%
January	5.38%	4.08%	4.90%	5.0%	87.8%
2017	4.73%	3.46%	4.34%	4.4%	89.0%
December	5.33%	3.98%	4.69%	4.9%	85.2%
November	5.08%	3.74%	4.29%	4.7%	86.9%
October	4.89%	3.57%	4.16%	4.5%	87.0%
September	4.56%	3.47%	4.12%	4.2%	88.3%
August	4.78%	3.44%	3.94%	4.4%	89.0%
July	4.69%	3.50%	3.96%	4.3%	89.7%
June	4.58%	3.34%	4.09%	4.2%	88.5%
May	4.53%	3.15%	3.98%	4.1%	87.8%
April	4.55%	3.37%	4.18%	4.2%	87.7%
March	5.16%	3.49%	4.46%	4.7%	86.5%
February	5.32%	3.86%	4.57%	4.9%	85.5%
January	5.51%	3.70%	4.81%	5.0%	86.3%
2016	4.91%	3.55%	4.27%	4.5%	87.3%
December	4.78%	3.59%	4.14%	4.4%	86.4%
November	4.62%	3.49%	4.24%	4.3%	87.8%
October	4.28%	3.51%	4.26%	4.1%	88.0%
September	4.51%	3.44%	3.83%	4.2%	87.6%
August	4.69%	3.25%	3.88%	4.3%	88.3%
July	4.36%	2.98%	3.83%	4.0%	88.6%
June	4.32%	3.05%	3.78%	4.0%	87.0%
May	4.25%	3.11%	3.93%	3.9%	84.7%
April	4.34%	3.17%	3.96%	4.0%	86.4%
March	4.78%	3.31%	4.17%	4.4%	86.3%
February	4.92%	3.68%	4.33%	4.6%	85.8%
January	4.87%	3.46%	4.58%	4.5%	87.2%
2015	4.56%	3.34%	4.08%	4.2%	87.0%



Health Service Absence Rate- by Hospital Group & Community Healthcare Organisation

	June	May	April	March	February	January	2017	Decemb er	Novemb er	October	Septemb er	August	July	June	May	April	March	February	January	2016	2015
Overall	4.2%	4.2%	4.2%	4.2%	4.4%	5.0%	4.4%	4.9%	4.7%	4.5%	4.2%	4.4%	4.3%	4.2%	4.1%	4.2%	4.7%	4.9%	5.0%	4.5%	4.2%
Children's Hospital Group	3.5%	3.3%	3.2%	3.4%	4.1%	4.7%	3.7%	5.1%	4.5%	4.0%	3.8%	4.1%	4.2%	4.1%	4.1%	3.3%	3.6%	4.1%	4.7%	4.1%	4.0%
Dublin Midlands	3.5%	3.6%	3.5%	3.6%	4.0%	4.5%	3.8%	4.5%	4.0%	3.8%	3.9%	3.8%	3.7%	3.4%	3.4%	3.8%	4.0%	4.2%	4.1%	3.9%	3.6%
Ireland East	3.8%	3.7%	3.5%	3.5%	3.7%	4.1%	3.7%	4.1%	3.9%	4.0%	3.8%	3.7%	3.8%	3.7%	3.8%	3.6%	4.1%	4.3%	4.2%	3.9%	3.5%
RCSI	3.7%	3.7%	3.8%	3.9%	3.9%	4.8%	4.0%	4.6%	4.4%	4.3%	4.0%	3.8%	4.0%	4.1%	4.2%	4.2%	4.3%	4.5%	4.5%	4.2%	3.8%
Saolta Healthcare University	3.6%	3.5%	3.8%	3.2%	3.8%	4.4%	3.7%	3.8%	3.8%	3.8%	3.5%	3.6%	3.5%	3.5%	3.4%	3.6%	3.8%	4.8%	3.9%	3.8%	3.8%
South/ South West	3.8%	3.8%	3.8%	4.0%	4.0%	4.5%	4.0%	4.7%	4.1%	3.9%	3.8%	4.0%	4.0%	4.1%	3.3%	3.7%	4.4%	4.2%	4.3%	4.0%	3.8%
University of Limerick	5.1%	5.2%	5.1%	5.4%	6.0%	5.9%	5.4%	6.2%	5.9%	5.8%	5.5%	5.7%	5.4%	5.6%	5.2%	5.1%	5.8%	5.8%	10.3%	6.0%	4.9%
Acute Services	3.8%	3.7%	3.7%	3.7%	4.0%	4.5%	3.9%	4.5%	4.2%	4.1%	3.9%	3.9%	3.9%	3.9%	3.7%	3.8%	4.2%	4.5%	4.6%	4.1%	3.8%
CHO 1	6.2%	6.2%	5.5%	5.8%	4.6%	5.5%	5.7%	6.7%	6.4%	5.8%	5.6%	5.9%	5.7%	5.8%	6.0%	5.9%	6.5%	6.9%	7.0%	6.2%	5.8%
CHO 2	4.2%	4.4%	4.8%	4.5%	4.6%	5.6%	4.7%	5.1%	4.6%	5.0%	4.4%	4.3%	4.1%	3.8%	4.1%	4.2%	4.7%	5.2%	5.0%	4.6%	4.5%
CHO 3	5.2%	5.1%	5.3%	5.4%	5.6%	6.2%	5.5%	5.7%	5.9%	5.5%	5.8%	5.8%	5.5%	5.7%	5.0%	5.7%	5.8%	5.9%	6.1%	5.7%	5.1%
CHO 4	3.9%	3.9%	3.8%	3.9%	3.9%	4.4%	4.0%	4.6%	4.6%	4.2%	4.0%	4.1%	3.8%	3.7%	3.7%	4.0%	4.5%	4.5%	4.3%	4.2%	3.9%
CHO 5	5.2%	5.1%	5.0%	5.5%	5.4%	6.1%	5.4%	5.9%	4.9%	5.0%	5.3%	5.9%	5.4%	5.1%	5.0%	4.6%	5.5%	5.4%	5.8%	5.3%	4.7%
CHO 6	3.9%	4.2%	3.9%	4.5%	4.4%	4.9%	4.3%	4.5%	4.3%	4.4%	3.8%	4.0%	3.8%	3.8%	3.7%	3.9%	4.3%	4.2%	4.4%	4.1%	3.8%
CHO 7	4.6%	4.8%	4.6%	4.9%	4.7%	5.0%	4.8%	5.6%	6.4%	5.1%	4.6%	4.5%	4.9%	4.9%	5.1%	5.0%	5.2%	5.2%	5.3%	5.1%	4.8%
CHO 8	6.0%	5.6%	5.5%	5.4%	5.5%	6.6%	5.8%	6.0%	6.0%	5.6%	5.1%	5.3%	5.6%	5.5%	5.2%	5.2%	5.8%	5.7%	6.0%	5.6%	5.2%
CHO 9	3.6%	3.9%	3.7%	3.6%	4.2%	4.5%	3.9%	4.3%	3.8%	4.1%	4.1%	4.6%	4.3%	3.8%	3.9%	3.9%	4.5%	4.5%	4.6%	4.2%	4.2%
PCRS	4.0%	5.0%	4.6%	5.4%	4.3%	5.3%	4.8%	5.8%	4.6%	5.1%	4.9%	5.9%	6.1%	4.5%	4.7%	4.9%	7.1%	6.5%	6.9%	5.6%	5.4%
Community Services	4.7%	4.8%	4.7%	4.8%	4.8%	5.5%	4.9%	5.3%	5.2%	4.9%	4.7%	4.9%	4.8%	4.6%	4.6%	4.7%	5.2%	5.2%	5.3%	5.0%	4.6%
Health & Wellbeing	3.7%	2.8%	3.2%	2.8%	3.9%	4.4%	3.4%	3.8%	3.8%	3.5%	3.6%	3.5%	4.1%	3.7%	3.4%	4.0%	5.5%	5.1%	5.1%	4.1%	4.7%
Ambulance Services	5.2%	5.4%	5.8%	5.8%	6.2%	7.2%	5.9%	6.9%	6.4%	6.1%	5.1%	7.1%	5.8%	6.0%	5.1%	6.2%	7.5%	8.0%	8.5%	6.6%	5.7%
Corporate & HBS	3.6%	3.7%	4.3%	3.8%	4.5%	5.8%	4.3%	4.9%	4.0%	4.1%	3.1%	3.0%	3.4%	3.2%	3.4%	3.3%	3.6%	4.5%	4.4%	3.8%	3.8%

Health Service Absence Rate - by Staff Category & Hospital, Hospital Group & CHO: Jun 2017

Service	Medical /Dental	Nursing	Health & Social Care	Management Admin	General Supportf	Patient & Client Care	Overall	Certified
Children's University Hospital	0.5%	3.9%	3.6%	4.0%	7.2%	10.8%	3.8%	94.7%
Our Lady's Children's Hospital	1.3%	3.4%	2.5%	3.0%	7.4%	6.2%	3.4%	86.5%
Tallaght Paediatric Hospital	2.3%	2.3%	0.0%	4.6%	0.0%	0.0%	2.6%	83.7%
Children's Hospital Group	1.2%	3.5%	2.9%	3.5%	7.3%	7.5%	3.5%	89.6%
Coombe Women & Infants University Hospital	0.2%	2.6%	0.6%	3.0%	4.5%	4.9%	2.7%	75.1%
Midland Regional Hospital, Portlaoise	0.9%	5.2%	5.6%	1.4%	8.6%	7.0%	4.8%	89.6%
Midland Regional Hospital, Tullamore	3.2%	3.9%	5.7%	5.3%	4.5%	8.9%	5.3%	90.0%
Naas General Hospital	1.9%	5.1%	0.7%	2.4%	2.8%	7.2%	4.0%	87.7%
St. James's Hospital	0.2%	2.7%	1.7%	2.6%	3.3%	4.6%	2.4%	85.4%
St. Luke's Hospital, Rathgar	0.2%	4.4%	3.2%	4.4%	9.9%	3.7%	4.5%	89.6%
Tallaght Hospital	0.9%	5.1%	4.3%	4.2%	6.1%	6.0%	4.4%	87.9%
Dublin Midlands	0.8%	3.7%	2.7%	3.2%	4.8%	6.2%	3.5%	86.8%
Cappagh National Orthopaedic Hospital	3.4%	4.7%	3.5%	5.0%	6.4%	8.3%	5.0%	88.9%
Mater Misericordiae University Hospital	1.8%	3.9%	1.9%	4.8%	5.5%	7.2%	3.9%	90.5%
Midland Regional Hospital, Mullingar	2.9%	6.4%	3.4%	3.0%	1.3%	12.7%	5.7%	91.2%
National Maternity Hospital	0.0%	4.4%	0.3%	2.7%	6.5%	14.0%	4.0%	88.8%
Our Lady's Hospital, Navan	0.2%	3.5%	6.1%	5.1%	13.2%	6.5%	4.7%	87.7%
Royal Victoria Eye & Ear Hospital	3.9%	3.2%	0.0%	4.6%	3.5%	15.5%	3.9%	91.7%
St. Columcille's Hospital	0.0%	2.3%	0.2%	1.4%	2.7%	2.6%	1.7%	86.3%
St. Luke's General Hospital	1.3%	5.6%	4.5%	6.2%	5.1%	3.0%	4.7%	90.1%
St. Michael's Hospital	0.0%	4.1%	1.7%	3.2%	1.4%	6.4%	3.2%	88.9%
St. Vincent's University Hospital	0.5%	2.6%	3.1%	2.6%	4.6%	5.9%	2.8%	88.7%
Wexford General Hospital	2.3%	6.3%	2.2%	2.2%	6.6%	5.9%	5.0%	90.1%
Ireland East	1.4%	4.0%	2.6%	3.6%	5.2%	7.2%	3.8%	89.7%
Beaumont Hospital	0.5%	3.4%	2.0%	3.3%	1.9%	2.9%	2.6%	88.2%
Cavan General Hospital	0.6%	8.7%	2.1%	5.1%	5.2%	7.9%	5.9%	91.9%
Connolly Hospital	0.8%	3.4%	2.9%	3.5%	4.0%	6.4%	3.4%	89.8%
Louth County Hospital	0.0%	2.6%	4.8%	7.7%	9.0%	7.6%	5.7%	89.7%
Monaghan General Hospital	0.0%	7.0%	2.8%	1.4%	1.5%	7.0%	4.7%	90.7%
Our Lady of Lourdes Hospital	1.7%	5.7%	4.1%	5.0%	9.8%	8.5%	5.2%	90.6%
The Rotunda Hospital	2.0%	3.7%	3.1%	3.0%	4.4%	4.4%	3.5%	86.6%
RCSI	1.0%	4.4%	2.7%	3.9%	4.4%	5.7%	3.7%	89.6%
Galway University Hospitals	0.8%	4.3%	2.8%	2.6%	2.4%	5.3%	3.2%	80.5%
Letterkenny General Hospital	1.5%	3.8%	3.6%	3.8%	5.7%	4.0%	3.8%	87.2%
Mayo General Hospital	1.2%	6.0%	2.6%	2.4%	6.1%	4.4%	4.2%	85.8%
Portiuncula Hospital	3.4%	5.3%	1.2%	3.7%	6.8%	4.2%	4.5%	84.0%
Roscommon County Hospital	0.0%	5.3%	1.6%	1.4%	3.7%	6.4%	3.5%	85.8%

Service	Medical /Dental	Nursing	Health & Social Care	Management Admin	General Supportf	Patient & Client Care	Overall	Certified
Sligo Regional Hospital	0.8%	3.9%	2.3%	3.3%	5.7%	5.1%	3.6%	88.0%
Saolta Healthcare University	1.1%	4.5%	2.6%	2.9%	4.7%	4.8%	3.6%	84.4%
Bantry General Hospital	0.0%	5.1%	4.2%	3.9%	7.3%	2.1%	3.9%	90.3%
Cork University Hospital	1.1%	4.6%	2.8%	2.6%	7.0%	2.8%	3.9%	85.1%
Lourdes Orthopaedic Hospital	0.0%	4.8%		0.0%	3.8%		3.6%	95.5%
Mallow General Hospital	0.0%	6.4%	0.7%	4.0%	1.4%		3.6%	92.9%
Mercy University Hospital	0.9%	4.0%	2.9%	2.4%	5.7%	9.5%	3.8%	89.0%
South Infirmary-Victoria University Hospital	0.9%	3.3%	0.6%	2.4%	3.9%	1.8%	2.6%	89.9%
South Tipperary General Hospital	2.1%	5.1%	1.9%	5.5%	4.5%	2.2%	4.2%	88.4%
University Hospital Waterford	0.7%	3.9%	4.9%	4.3%	7.3%	9.1%	4.1%	89.3%
University Hospital Kerry	0.8%	4.7%	3.6%	2.7%	3.2%		3.5%	77.6%
South/ South West	1.0%	4.4%	3.1%	3.2%	5.7%	4.9%	3.8%	86.6%
Croom Hospital	0.0%	5.6%	0.0%	7.9%	22.4%	5.7%	6.6%	95.9%
Ennis Hospital	0.0%	7.7%	7.0%	5.7%	3.2%	7.9%	6.6%	94.8%
Nenagh Hospital	0.0%	5.7%	1.8%	4.1%	3.1%	7.2%	5.1%	92.9%
St. John's Hospital	0.0%	1.7%	1.9%	3.3%	6.7%	5.2%	2.9%	91.5%
University Maternity Hospital	0.0%	6.1%	0.0%	4.3%	6.5%	13.7%	6.2%	90.2%
University Hospital Limerick	0.9%	5.7%	3.5%	5.2%	6.0%	6.9%	4.9%	91.2%
University of Limerick	0.7%	5.6%	3.5%	5.0%	6.7%	7.2%	5.1%	91.7%
Acute Services	1.0%	4.2%	2.8%	3.5%	5.1%	6.1%	3.8%	88.0%
CHO 1	1.3%	6.1%	4.6%	3.4%	8.8%	7.7%	6.2%	95.1%
CHO 2	2.0%	5.3%	3.3%	2.9%	3.3%	4.4%	4.2%	92.6%
CHO 3	1.4%	6.3%	3.6%	6.0%	4.0%	5.3%	5.2%	94.1%
CHO 4	2.0%	4.3%	3.1%	2.2%	4.2%	4.8%	3.9%	90.7%
CHO 5	4.0%	5.0%	3.6%	4.6%	7.4%	6.0%	5.2%	89.5%
CHO 6	1.1%	4.5%	3.0%	3.3%	3.8%	4.5%	3.9%	89.4%
CHO 7	4.6%	4.4%	3.0%	5.0%	4.0%	5.5%	4.6%	93.1%
CHO 8	2.2%	6.6%	4.8%	4.3%	5.7%	7.0%	6.0%	93.5%
CHO 9	0.8%	4.3%	3.0%	2.0%	5.1%	3.5%	3.6%	91.3%
PCRS				4.1%	0.0%		4.0%	94.5%
Community Services	2.3%	5.2%	3.5%	3.8%	5.1%	5.4%	4.7%	92.4%
Health & Wellbeing	3.9%	16.6%	3.1%	3.9%	2.2%		3.7%	90.5%
Ambulance Services				3.9%	0.8%	5.3%	5.2%	88.6%
Corporate & HBS	0.0%	4.1%	6.0%	3.5%	5.2%	0.0%	3.6%	92.6%
Overall	1.3%	4.6%	3.1%	3.64 %	5.1%	5.6%	4.2%	
Certified	88.7%	87.9%	91.3%	92.6%	92.7%	91.1%	90.3%	90.3%

Health Service Absence Rate - by Staff Category & Hospital, Hospital Group & CHO: YTD Jun 2017

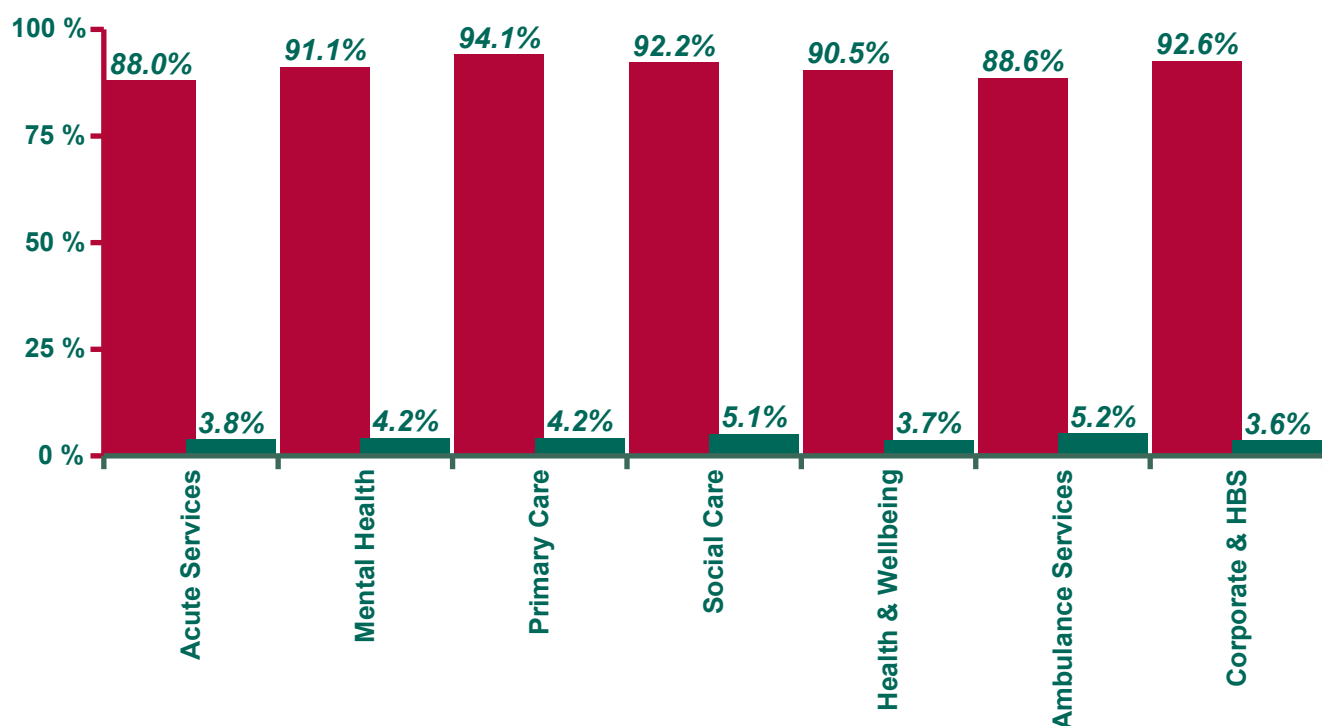
Service	Medical /Dental	Nursing	Health & Social Care	Management Admin	General Supportf	Patient & Client Care	Overall	Certified
Children's University Hospital	0.4%	3.3%	3.5%	4.5%	6.0%	6.8%	3.5%	91.9%
Our Lady's Children's Hospital	1.0%	4.1%	3.6%	3.6%	7.9%	5.6%	3.9%	86.9%
Tallaght Paediatric Hospital	2.1%	2.8%	1.0%	2.9%	0.0%	12.5%	2.8%	82.3%
Children's Hospital Group	0.9%	3.7%	3.5%	4.0%	7.4%	6.2%	3.7%	88.4%
Coombe Women & Infants University Hospital	0.3%	3.7%	2.9%	4.4%	4.2%	9.5%	3.8%	75.1%
Midland Regional Hospital, Portlaoise	0.8%	6.5%	4.7%	3.1%	9.8%	7.4%	5.6%	90.0%
Midland Regional Hospital, Tullamore	1.6%	4.6%	7.2%	5.2%	5.0%	7.3%	5.2%	90.0%
Naas General Hospital	1.2%	4.8%	1.1%	2.1%	3.1%	9.1%	4.1%	87.0%
Network Office Dublin Midlands Hospitals				2.5%			2.5%	0.0%
St. James's Hospital	0.6%	3.2%	2.1%	2.9%	4.4%	4.8%	2.9%	83.6%
St. Luke's Hospital, Rathgar	0.6%	4.9%	3.0%	6.6%	8.7%	5.9%	4.7%	87.8%
Tallaght Hospital	0.9%	4.6%	3.6%	4.2%	6.2%	6.0%	4.1%	86.7%
Dublin Midlands	0.8%	4.0%	2.9%	3.7%	5.2%	6.5%	3.8%	85.5%
Cappagh National Orthopaedic Hospital	1.2%	3.7%	3.1%	3.5%	6.6%	6.5%	4.0%	87.6%
Mater Misericordiae University Hospital	1.0%	3.5%	2.5%	4.9%	6.8%	7.1%	3.8%	89.8%
Midland Regional Hospital, Mullingar	1.2%	5.6%	2.8%	3.5%	3.1%	9.7%	4.8%	90.9%
National Maternity Hospital	0.1%	3.7%	0.7%	2.8%	5.9%	7.9%	3.5%	87.5%
Our Lady's Hospital, Navan	0.7%	5.9%	3.2%	3.8%	5.9%	5.3%	4.5%	87.4%
Royal Victoria Eye & Ear Hospital	2.6%	3.2%	1.5%	3.2%	5.3%	10.3%	3.5%	87.8%
St. Columcille's Hospital	0.1%	3.4%	2.4%	1.8%	4.5%	1.9%	2.6%	86.7%
St. Luke's General Hospital	2.8%	5.6%	3.4%	5.1%	5.9%	3.6%	4.9%	89.8%
St. Michael's Hospital	0.2%	4.5%	3.5%	1.5%	1.7%	5.8%	3.3%	87.5%
St. Vincent's University Hospital	0.7%	3.0%	2.9%	3.3%	4.8%	4.6%	3.0%	86.8%
Wexford General Hospital	1.5%	5.0%	1.7%	3.4%	5.7%	8.7%	4.5%	88.7%
Ireland East	1.1%	3.9%	2.7%	3.7%	5.5%	6.2%	3.7%	88.6%
Beaumont Hospital	0.4%	3.4%	2.3%	4.0%	4.0%	5.6%	3.1%	88.3%
Cavan General Hospital	1.1%	7.3%	2.5%	4.0%	4.4%	8.4%	5.3%	90.2%
Connolly Hospital	0.8%	3.8%	2.9%	3.5%	4.7%	4.3%	3.3%	86.2%
Louth County Hospital	0.0%	4.0%	4.3%	6.6%	12.2%	7.2%	6.7%	89.9%
Monaghan General Hospital	0.0%	4.5%	2.6%	3.7%	2.9%	7.2%	4.4%	88.8%
Our Lady of Lourdes Hospital	1.8%	6.1%	3.5%	4.5%	8.9%	13.6%	5.4%	88.9%
The Rotunda Hospital	0.9%	4.5%	2.0%	3.0%	3.7%	3.2%	3.4%	86.1%
RCSI	0.9%	4.5%	2.6%	4.0%	5.4%	6.9%	4.0%	88.4%
Galway University Hospitals	0.8%	4.0%	2.6%	3.2%	4.2%	5.5%	3.3%	80.6%
Letterkenny General Hospital	0.9%	5.4%	3.1%	4.0%	5.7%	4.3%	4.4%	87.5%
Mayo General Hospital	1.0%	5.1%	2.7%	4.2%	3.8%	4.4%	3.9%	85.1%
Portiuncula Hospital	3.7%	4.3%	1.2%	2.6%	5.5%	4.3%	3.6%	80.0%
Roscommon County Hospital	0.0%	5.1%	2.1%	1.1%	4.7%	8.3%	3.8%	79.6%

Service	Medical /Dental	Nursing	Health & Social Care	Management Admin	General Supportf	Patient & Client Care	Overall	Certified
Sligo Regional Hospital	1.1%	4.4%	3.1%	3.7%	5.5%	5.0%	3.9%	88.5%
Saolta Healthcare University	1.1%	4.5%	2.7%	3.4%	5.0%	4.9%	3.7%	84.0%
Bantry General Hospital	0.6%	4.9%	0.6%	4.6%	2.3%	4.0%	3.7%	89.7%
Cork University Hospital	1.3%	4.8%	3.1%	2.8%	7.2%	3.4%	4.1%	84.8%
Lourdes Orthopaedic Hospital	0.0%	3.3%		0.2%	6.7%		3.8%	91.2%
Mallow General Hospital	1.7%	6.3%	0.9%	5.6%	3.0%		4.5%	92.9%
Mercy University Hospital	0.3%	4.6%	2.0%	3.2%	7.8%	12.9%	4.5%	88.8%
South Infirmary-Victoria University Hospital	0.7%	4.9%	1.3%	3.2%	3.8%	3.8%	3.5%	89.5%
South Tipperary General Hospital	1.2%	6.2%	2.8%	5.8%	5.4%	5.8%	5.0%	88.7%
University Hospital Waterford	0.9%	4.0%	3.6%	3.4%	6.0%	6.5%	3.6%	87.5%
University Hospital Kerry	1.1%	4.1%	3.5%	2.6%	3.6%		3.3%	74.5%
South/ South West	1.0%	4.7%	2.9%	3.4%	5.9%	6.1%	4.0%	85.9%
Croom Hospital	0.0%	5.6%	0.5%	9.5%	16.9%	6.2%	6.5%	94.3%
Ennis Hospital	0.2%	8.9%	2.7%	2.4%	2.7%	9.6%	6.5%	90.9%
Nenagh Hospital	4.7%	7.0%	2.7%	7.9%	8.1%	6.7%	6.7%	92.5%
St. John's Hospital	0.7%	3.2%	5.4%	3.3%	6.6%	5.4%	3.9%	92.2%
University Maternity Hospital	0.3%	7.5%	5.5%	3.0%	2.4%	10.9%	6.5%	89.2%
University Hospital Limerick	0.6%	5.9%	3.3%	4.8%	6.9%	7.7%	5.0%	89.9%
University of Limerick	0.7%	6.3%	3.4%	4.7%	6.9%	7.7%	5.4%	90.5%
Acute Services	1.0%	4.4%	2.9%	3.7%	5.5%	6.3%	3.9%	87.0%
CHO 1	1.5%	5.7%	4.5%	3.6%	6.7%	7.4%	5.7%	93.6%
CHO 2	2.2%	5.7%	3.7%	4.2%	3.5%	4.8%	4.7%	93.3%
CHO 3	3.0%	6.6%	3.8%	5.0%	5.4%	5.6%	5.5%	93.3%
CHO 4	2.4%	4.4%	3.1%	2.3%	4.6%	4.5%	4.0%	88.7%
CHO 5	2.4%	5.3%	4.6%	4.8%	6.5%	6.1%	5.4%	89.5%
CHO 6	1.3%	5.2%	3.5%	4.2%	4.1%	4.5%	4.3%	87.6%
CHO 7	3.1%	4.5%	3.1%	5.4%	5.4%	5.4%	4.8%	91.2%
CHO 8	2.4%	6.3%	4.5%	4.4%	6.1%	6.8%	5.8%	92.3%
CHO 9	2.3%	4.3%	3.0%	2.8%	4.9%	4.4%	3.9%	87.3%
PCRS				4.8%	6.4%		4.8%	88.6%
Community Services	2.3%	5.3%	3.7%	4.3%	5.3%	5.5%	4.9%	91.0%
Health & Wellbeing	2.5%	2.1%	3.2%	3.9%	3.1%	2.0%	3.4%	88.8%
Ambulance Services				2.3%	8.6%	6.0%	5.9%	88.3%
Corporate & HBS	4.5%	4.7%	1.9%	4.3%	3.7%	2.5%	4.3%	92.7%
Overall	1.2%	4.7%	3.3%	4.00 %	5.4%	5.8%	4.4%	
Certified	86.8%	87.1%	88.5%	90.7%	91.3%	90.9%	89.0%	89.0%

Health Service Absence Rate - by Staff Category & Division: Jun 2017

Service	Medical /Dental	Nursing	Health & Social Care	Management Admin	General Support	Patient & Client Care	Overall	Certified
Acute Services	1.0%	4.2%	2.8%	3.5%	5.1%	6.1%	3.8%	88.0%
Mental Health	2.0%	4.7%	3.1%	3.7%	5.6%	3.6%	4.2%	91.1%
Primary Care	2.9%	5.0%	3.5%	3.9%	4.5%	5.5%	4.2%	94.1%
Social Care	0.8%	5.5%	3.6%	3.7%	5.0%	5.6%	5.1%	92.2%
Health & Wellbeing	3.9%	16.6%	3.1%	3.9%	2.2%		3.7%	90.5%
Ambulance Services				3.9%	0.8%	5.3%	5.2%	88.6%
Corporate & HBS	0.0%	4.1%	6.0%	3.5%	5.2%	0.0%	3.6%	92.6%
Overall	1.3%	4.6%	3.1%	3.64 %	5.1%	5.6%	4.2%	
Certified	88.7%	87.9%	91.3%	92.6%	92.7%	91.1%	90.3%	90.3%

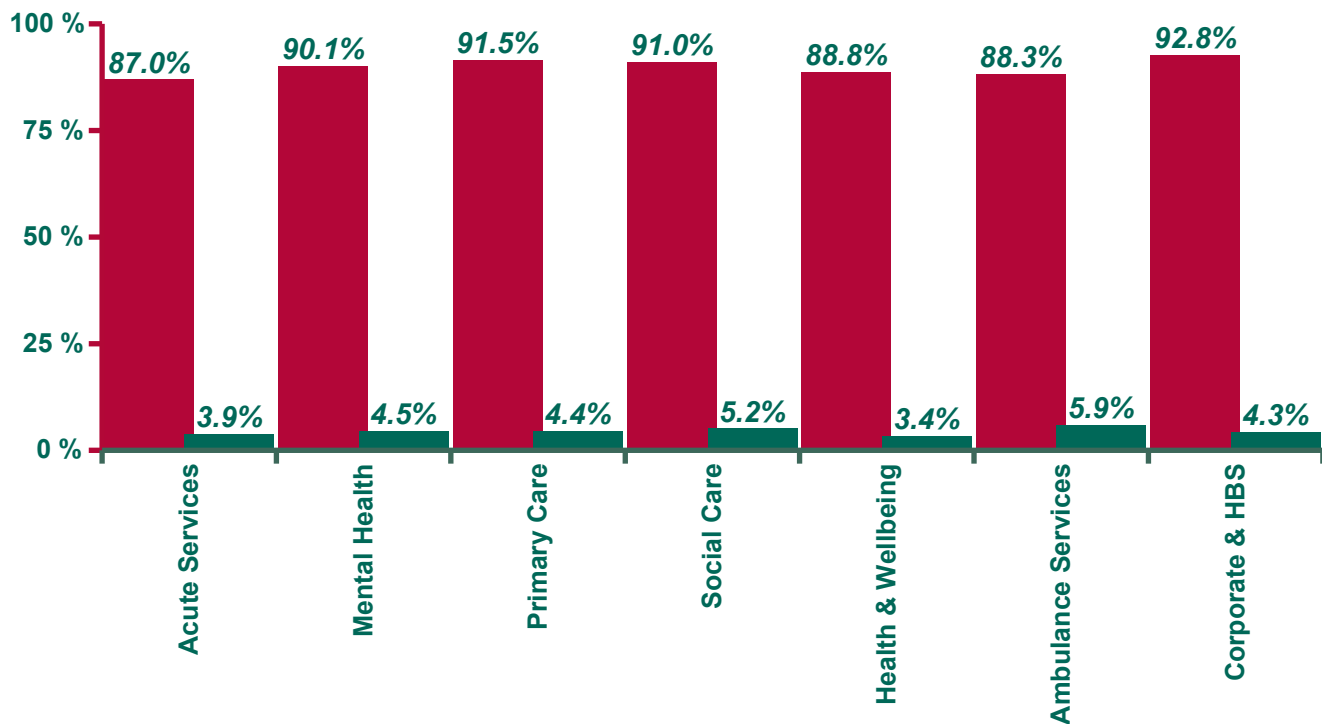
% Absence Rate/ Proportion Certified: Jun 2017



Health Service Absence Rate - by Staff Category & Division: YTD Jun 2017

Service	Medical /Dental	Nursing	Health & Social Care	Management Admin	General Supportf	Patient & Client Care	Overall	Certified
Acute Services	1.0%	4.4%	2.9%	3.7%	5.5%	6.3%	3.9%	87.0%
Mental Health	2.4%	4.9%	3.4%	3.5%	6.2%	4.8%	4.5%	90.1%
Primary Care	2.6%	5.2%	3.5%	4.5%	4.8%	5.4%	4.4%	91.5%
Social Care	1.0%	5.6%	3.8%	4.1%	5.1%	5.6%	5.2%	91.0%
Health & Wellbeing	2.5%	2.1%	3.2%	3.9%	3.1%	2.0%	3.4%	88.8%
Ambulance Services				2.3%	8.6%	6.0%	5.9%	88.3%
Corporate & HBS	4.5%	4.7%	1.9%	4.3%	3.7%	2.5%	4.3%	92.7%
Overall	1.2%	4.7%	3.3%	4.00 %	5.4%	5.8%	4.4%	
Certified	86.8%	87.1%	88.5%	90.7%	91.3%	90.9%	89.0%	89.0%

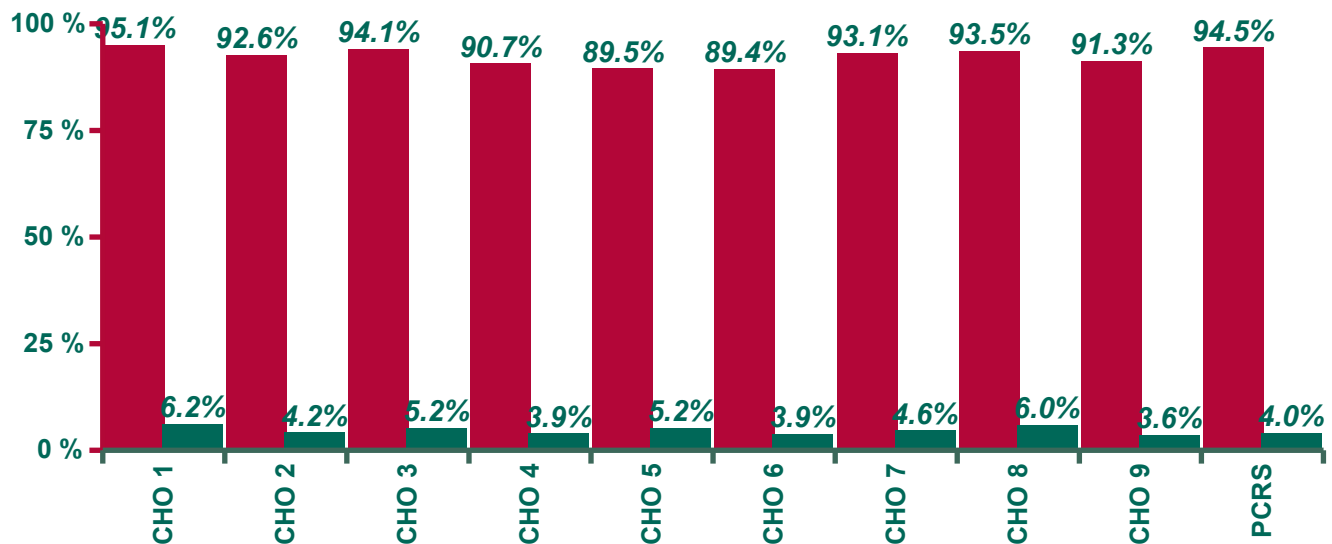
% Absence Rate/ Proportion Certified YTD: Jun 2017



Health Service Absence Rate - by Staff Category & Division: Jun 2017

Service	Medical /Dental	Nursing	Health & Social Care	Management Admin	General Supportf	Patient & Client Care	Overall	Certified
CHO 1	1.3%	6.1%	4.6%	3.4%	8.8%	7.7%	6.2%	95.1%
CHO 2	2.0%	5.3%	3.3%	2.9%	3.3%	4.4%	4.2%	92.6%
CHO 3	1.4%	6.3%	3.6%	6.0%	4.0%	5.3%	5.2%	94.1%
CHO 4	2.0%	4.3%	3.1%	2.2%	4.2%	4.8%	3.9%	90.7%
CHO 5	4.0%	5.0%	3.6%	4.6%	7.4%	6.0%	5.2%	89.5%
CHO 6	1.1%	4.5%	3.0%	3.3%	3.8%	4.5%	3.9%	89.4%
CHO 7	4.6%	4.4%	3.0%	5.0%	4.0%	5.5%	4.6%	93.1%
CHO 8	2.2%	6.6%	4.8%	4.3%	5.7%	7.0%	6.0%	93.5%
CHO 9	0.8%	4.3%	3.0%	2.0%	5.1%	3.5%	3.6%	91.3%
PCRS				4.1%	0.0%		4.0%	94.5%
Overall	2.3%	5.2%	3.5%	3.84 %	5.1%	5.4%	4.7%	
Certified	90.8%	92.1%	92.0%	94.0%	94.1%	92.1%	92.4%	92.4%

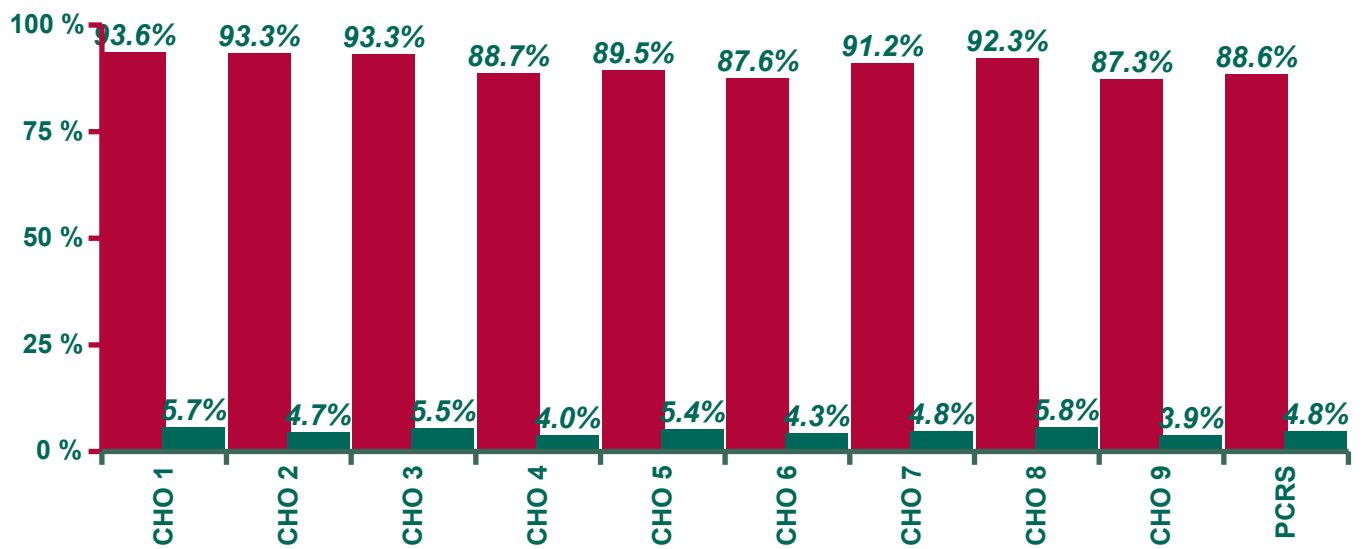
% Absence Rate/ Proportion Certified: Jun 2017



Health Service Absence Rate - by Staff Category & Division: Jun 2017

Service	Medical /Dental	Nursing	Health & Social Care	Management Admin	General Supportf	Patient & Client Care	Overall	Certified
CHO 1	1.5%	5.7%	4.5%	3.6%	6.7%	7.4%	5.7%	93.6%
CHO 2	2.2%	5.7%	3.7%	4.2%	3.5%	4.8%	4.7%	93.3%
CHO 3	3.0%	6.6%	3.8%	5.0%	5.4%	5.6%	5.5%	93.3%
CHO 4	2.4%	4.4%	3.1%	2.3%	4.6%	4.5%	4.0%	88.7%
CHO 5	2.4%	5.3%	4.6%	4.8%	6.5%	6.1%	5.4%	89.5%
CHO 6	1.3%	5.2%	3.5%	4.2%	4.1%	4.5%	4.3%	87.6%
CHO 7	3.1%	4.5%	3.1%	5.4%	5.4%	5.4%	4.8%	91.2%
CHO 8	2.4%	6.3%	4.5%	4.4%	6.1%	6.8%	5.8%	92.3%
CHO 9	2.3%	4.3%	3.0%	2.8%	4.9%	4.4%	3.9%	87.3%
PCRS				4.8%	6.4%		4.8%	88.6%
Overall	2.3%	5.3%	3.7%	4.29 %	5.3%	5.5%	4.9%	
Certified	91.0%	91.2%	89.4%	91.2%	91.4%	92.0%	91.0%	91.0%

% Absence Rate/ Proportion Certified: Jun 2017



Health Service Absence Rate - by Staff Category & Division: Jun 2017

Mental Health Division by Staff Category

CHO	Medical /Dental	Nursing	Health & Social Care	Management Admin	General Supportf	Patient & Client Care	Overall	Certified
CHO 1	0.9%	5.6%	1.2%	4.6%	7.8%	5.5%	4.9%	91.1%
CHO 2	2.5%	3.6%	3.5%	2.2%	6.6%	3.5%	3.5%	92.0%
CHO 3	0.1%	7.4%	5.3%	5.9%	3.0%	3.9%	5.8%	94.3%
CHO 4	1.1%	3.9%	1.5%	2.1%	2.8%	1.4%	2.7%	89.0%
CHO 5	5.2%	4.4%	3.3%	7.4%	7.0%	2.4%	4.9%	90.2%
CHO 6	1.1%	4.4%	4.4%	3.1%	4.7%	0.0%	3.6%	92.4%
CHO 7	3.2%	4.2%	3.7%	0.0%	5.2%	0.0%	3.9%	92.7%
CHO 8	3.0%	5.6%	4.3%	2.9%	7.8%	6.2%	5.2%	90.2%
CHO 9	0.7%	4.0%	0.3%	0.5%	1.9%	3.4%	3.1%	90.0%
Overall	2.0%	4.7%	3.1%	3.72 %	5.6%	3.6%	4.2%	
Certified	92.3%	90.2%	93.8%	91.6%	94.0%	89.2%	91.1%	91.1%

Primary Care Division by Staff Category

CHO	Medical /Dental	Nursing	Health & Social Care	Management Admin	General Supportf	Patient & Client Care	Overall	Certified
CHO 1	2.1%	5.5%	5.4%	3.9%	15.9%	3.9%	5.4%	96.6%
CHO 2	1.2%	7.8%	3.7%	3.9%	0.0%	2.3%	4.4%	96.3%
CHO 3	2.6%	3.4%	4.0%	4.3%	4.9%	8.2%	4.2%	96.3%
CHO 4	3.0%	1.7%	2.9%	1.8%	3.5%	3.2%	2.4%	90.4%
CHO 5	3.7%	3.4%	3.9%	3.6%	3.1%	7.9%	3.9%	93.2%
CHO 6	1.3%	9.2%	2.2%	3.0%	2.7%	4.0%	4.4%	83.2%
CHO 7	6.8%	4.1%	2.6%	5.5%	2.6%	8.2%	4.6%	94.6%
CHO 8	1.7%	6.4%	3.8%	3.9%	5.3%	5.6%	4.6%	96.3%
CHO 9								
PCRS				4.1%	0.0%		4.0%	94.5%
Overall	2.9%	5.0%	3.5%	3.93 %	4.5%	5.5%	4.2%	
Certified	90.8%	95.4%	93.3%	94.3%	97.4%	90.9%	94.1%	94.1%

Social Care Division by Staff Category

CHO	Medical /Dental	Nursing	Health & Social Care	Management Admin	General Supportf	Patient & Client Care	Overall	Certified
CHO 1	0.0%	6.6%	5.7%	1.9%	7.2%	8.0%	7.0%	95.6%
CHO 2	2.8%	5.7%	2.8%	1.7%	3.5%	4.7%	4.5%	91.2%
CHO 3	0.0%	6.5%	2.8%	8.5%	4.1%	5.3%	5.4%	93.5%
CHO 4	0.8%	5.8%	4.5%	2.8%	4.6%	5.2%	5.0%	91.1%
CHO 5	0.0%	6.3%	3.3%	4.3%	8.4%	6.2%	5.9%	88.4%
CHO 6	0.7%	3.6%	3.0%	3.5%	3.9%	4.5%	3.8%	90.4%
CHO 7	0.4%	4.6%	3.4%	4.3%	4.3%	5.3%	4.7%	92.5%
CHO 8	1.3%	7.4%	5.7%	5.6%	4.8%	7.3%	6.8%	93.6%
CHO 9	1.0%	4.4%	3.1%	2.1%	5.6%	3.6%	3.7%	91.5%
Overall	0.8%	5.5%	3.6%	3.68 %	5.0%	5.6%	5.1%	
Certified	79.8%	92.0%	90.8%	94.1%	93.5%	92.3%	92.2%	92.2%

Health Service Absence Rate - by Staff Category & Division: YTD Jun 2017

Mental Health Division by Staff Category

CHO	Medical /Dental	Nursing	Health & Social Care	Management Admin	General Supportf	Patient & Client Care	Overall	Certified
CHO 1	0.9%	5.4%	3.8%	3.6%	6.2%	6.8%	5.0%	91.0%
CHO 2	2.4%	3.8%	3.2%	3.8%	5.5%	3.1%	3.6%	92.5%
CHO 3	4.4%	8.2%	4.1%	3.3%	4.2%	9.6%	6.7%	94.2%
CHO 4	2.7%	4.0%	1.6%	1.9%	3.7%	2.7%	3.3%	86.3%
CHO 5	2.3%	4.9%	3.1%	5.4%	7.0%	4.8%	5.0%	89.1%
CHO 6	0.5%	4.3%	3.4%	1.6%	3.9%	3.5%	3.3%	88.1%
CHO 7	1.8%	4.9%	3.4%	9.8%	15.4%	6.6%	4.6%	90.6%
CHO 8	3.0%	4.9%	5.2%	3.7%	9.0%	5.7%	5.1%	88.9%
CHO 9	2.8%	4.1%	2.8%	2.7%	6.0%	5.6%	4.4%	88.8%
Overall	2.4%	4.9%	3.4%	3.45 %	6.2%	4.8%	4.5%	
Certified	91.3%	89.4%	91.0%	90.5%	92.6%	89.7%	90.1%	90.1%

Primary Care Division by Staff Category

CHO	Medical /Dental	Nursing	Health & Social Care	Management Admin	General Supportf	Patient & Client Care	Overall	Certified
CHO 1	1.9%	5.5%	4.5%	3.8%	9.1%	4.4%	4.7%	93.9%
CHO 2	2.1%	5.9%	3.8%	4.9%	1.6%	2.9%	4.3%	95.0%
CHO 3	2.2%	4.9%	4.7%	5.2%	5.5%	9.3%	5.1%	94.6%
CHO 4	2.4%	2.6%	2.5%	2.2%	3.7%	3.8%	2.6%	87.9%
CHO 5	3.0%	4.5%	4.2%	4.0%	2.1%	7.1%	4.2%	92.2%
CHO 6	2.5%	9.5%	2.5%	4.1%	3.1%	5.1%	5.0%	86.8%
CHO 7	4.8%	4.7%	2.9%	5.8%	5.1%	6.8%	4.8%	91.2%
CHO 8	2.1%	6.5%	3.8%	4.4%	4.7%	4.6%	4.7%	93.0%
CHO 9								
PCRS				4.8%	6.4%		4.8%	88.6%
Overall	2.6%	5.2%	3.5%	4.51 %	4.8%	5.4%	4.4%	
Certified	91.4%	93.7%	90.5%	90.8%	89.9%	90.4%	91.5%	91.5%

Social Care Division by Staff Category

CHO	Medical /Dental	Nursing	Health & Social Care	Management Admin	General Supportf	Patient & Client Care	Overall	Certified
CHO 1	1.7%	6.0%	5.2%	3.3%	6.1%	7.6%	6.4%	94.3%
CHO 2	1.2%	7.3%	3.9%	3.3%	3.5%	5.3%	5.4%	93.0%
CHO 3	0.4%	6.1%	3.4%	5.5%	5.7%	5.2%	5.2%	92.6%
CHO 4	0.9%	5.4%	4.4%	2.7%	4.9%	4.8%	4.8%	89.6%
CHO 5	0.0%	6.1%	5.6%	5.8%	6.6%	6.1%	6.0%	89.0%
CHO 6	0.6%	4.4%	3.8%	4.8%	4.2%	4.5%	4.2%	87.8%
CHO 7	0.3%	4.4%	3.2%	4.8%	5.2%	5.3%	4.8%	91.2%
CHO 8	0.5%	7.1%	4.8%	5.0%	5.1%	7.1%	6.5%	93.0%
CHO 9	1.9%	4.4%	3.0%	2.9%	4.6%	4.2%	3.8%	86.9%
Overall	1.0%	5.6%	3.8%	4.12 %	5.1%	5.6%	5.2%	
Certified	85.6%	91.2%	88.6%	92.5%	91.2%	92.2%	91.0%	91.0%

HSE & Section 38 Absence Rates- by Community Healthcare Organisation & by Division: Jun 2017

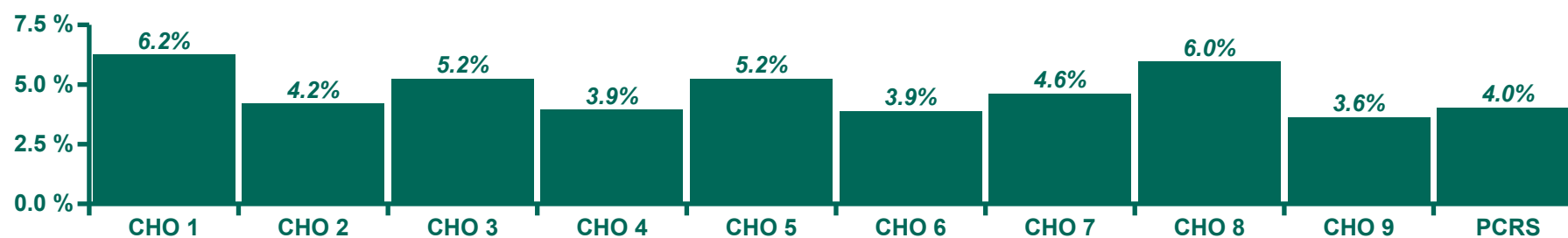
by Administration

CHO / Staff Category	certified	Overall	CHO 1	CHO 2	CHO 3	CHO 4	CHO 5	CHO 6	CHO 7	CHO 8	CHO 9	PCRS
Health Service Executive	92.8%	5.1%	6.2%	4.1%	6.1%	3.7%	5.1%	4.6%	5.5%	6.3%	3.8%	4.0%
Voluntary Agencies (Non-Acute)	91.7%	4.1%		4.4%	4.0%	4.7%	5.7%	3.7%	4.0%	5.0%	3.6%	
Overall	92.4%	4.7%	6.2%	4.2%	5.2%	3.9%	5.2%	3.9%	4.6%	6.0%	3.6%	4.0%
Certified		92.4%	95.1%	92.6%	94.1%	90.7%	89.5%	89.4%	93.1%	93.5%	91.3%	94.5%

by Staff Category

CHO / Staff Category	certified	Overall	CHO 1	CHO 2	CHO 3	CHO 4	CHO 5	CHO 6	CHO 7	CHO 8	CHO 9	PCRS
Medical /Dental	2.3%	2.3%	1.3%	2.0%	1.4%	2.0%	4.0%	1.1%	4.6%	2.2%	0.8%	
Nursing	5.2%	5.2%	6.1%	5.3%	6.3%	4.3%	5.0%	4.5%	4.4%	6.6%	4.3%	
Health & Social Care Professionals	3.5%	3.5%	4.6%	3.3%	3.6%	3.1%	3.6%	3.0%	3.0%	4.8%	3.0%	
Management Admin	3.8%	3.8%	3.4%	2.9%	6.0%	2.2%	4.6%	3.3%	5.0%	4.3%	2.0%	4.1%
General Support Staff	5.1%	5.1%	8.8%	3.3%	4.0%	4.2%	7.4%	3.8%	4.0%	5.7%	5.1%	0.0%
Other Patient & Client Care	5.4%	5.4%	7.7%	4.4%	5.3%	4.8%	6.0%	4.5%	5.5%	7.0%	3.5%	
Overall	92.4%	4.7%	6.2%	4.2%	5.2%	3.9%	5.2%	3.9%	4.6%	6.0%	3.6%	4.0%
Certified		92.4%	95.1%	92.6%	94.1%	90.7%	89.5%	89.4%	93.1%	93.5%	91.3%	94.5%

% Absence Rate: Jun 2017



Mental Health Division by Staff Category

Mental Health	certified	Overall	CHO 1	CHO 2	CHO 3	CHO 4	CHO 5	CHO 6	CHO 7	CHO 8	CHO 9
Medical /Dental	2.0%	2.0%	0.9%	2.5%	0.1%	1.1%	5.2%	1.1%	3.2%	3.0%	0.7%
Nursing	4.7%	4.7%	5.6%	3.6%	7.4%	3.9%	4.4%	4.4%	4.2%	5.6%	4.0%
Health & Social Care Professionals	3.1%	3.1%	1.2%	3.5%	5.3%	1.5%	3.3%	4.4%	3.7%	4.3%	0.3%
Management Admin	3.7%	3.7%	4.6%	2.2%	5.9%	2.1%	7.4%	3.1%	0.0%	2.9%	0.5%
General Support Staff	5.6%	5.6%	7.8%	6.6%	3.0%	2.8%	7.0%	4.7%	5.2%	7.8%	1.9%
Other Patient & Client Care	3.6%	3.6%	5.5%	3.5%	3.9%	1.4%	2.4%	0.0%	0.0%	6.2%	3.4%
Total	91.1%	4.2%	4.9%	3.5%	5.8%	2.7%	4.9%	3.6%	3.9%	5.2%	3.1%
Certified		91.1%	91.1%	92.0%	94.3%	89.0%	90.2%	92.4%	92.7%	90.2%	90.0%

Primary Care Division by Staff Category

Primary Care	certified	Overall	CHO 1	CHO 2	CHO 3	CHO 4	CHO 5	CHO 6	CHO 7	CHO 8	CHO 9	PCRS
Medical /Dental	2.9%	2.9%	2.1%	1.2%	2.6%	3.0%	3.7%	1.3%	6.8%	1.7%		
Nursing	5.0%	5.0%	5.5%	7.8%	3.4%	1.7%	3.4%	9.2%	4.1%	6.4%		
Health & Social Care Professionals	3.5%	3.5%	5.4%	3.7%	4.0%	2.9%	3.9%	2.2%	2.6%	3.8%		
Management Admin	3.9%	3.9%	3.9%	3.9%	4.3%	1.8%	3.6%	3.0%	5.5%	3.9%		4.1%
General Support Staff	4.5%	4.5%	15.9%	0.0%	4.9%	3.5%	3.1%	2.7%	2.6%	5.3%		0.0%
Other Patient & Client Care	5.5%	5.5%	3.9%	2.3%	8.2%	3.2%	7.9%	4.0%	8.2%	5.6%		
Total	94.1%	4.2%	5.4%	4.4%	4.2%	2.4%	3.9%	4.4%	4.6%	4.6%		4.0%
Certified		94.1%	96.6%	96.3%	96.3%	90.4%	93.2%	83.2%	94.6%	96.3%		94.5%

Social Care Division by Staff Category

Social Care	certified	Overall	CHO 1	CHO 2	CHO 3	CHO 4	CHO 5	CHO 6	CHO 7	CHO 8	CHO 9
Medical /Dental	0.8%	0.8%	0.0%	2.8%	0.0%	0.8%	0.0%	0.7%	0.4%	1.3%	1.0%
Nursing	5.5%	5.5%	6.6%	5.7%	6.5%	5.8%	6.3%	3.6%	4.6%	7.4%	4.4%
Health & Social Care Professionals	3.6%	3.6%	5.7%	2.8%	2.8%	4.5%	3.3%	3.0%	3.4%	5.7%	3.1%
Management Admin	3.7%	3.7%	1.9%	1.7%	8.5%	2.8%	4.3%	3.5%	4.3%	5.6%	2.1%
General Support Staff	5.0%	5.0%	7.2%	3.5%	4.1%	4.6%	8.4%	3.9%	4.3%	4.8%	5.6%
Other Patient & Client Care	5.6%	5.6%	8.0%	4.7%	5.3%	5.2%	6.2%	4.5%	5.3%	7.3%	3.6%
Total	92.2%	5.1%	7.0%	4.5%	5.4%	5.0%	5.9%	3.8%	4.7%	6.8%	3.7%
Certified		92.2%	95.6%	91.2%	93.5%	91.1%	88.4%	90.4%	92.5%	93.6%	91.5%

HSE & Section 38 Absence Rates- by Community Healthcare Organisation & by Division: YTD Jun 2017

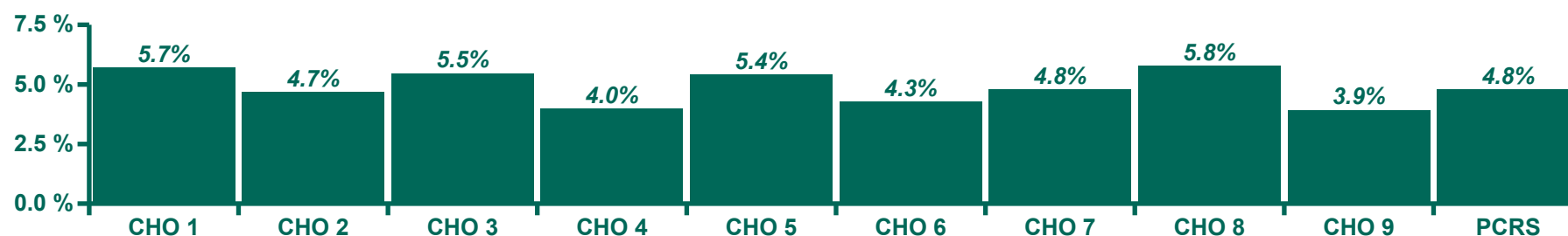
by Administration

CHO / Staff Category	certified	Overall	CHO 1	CHO 2	CHO 3	CHO 4	CHO 5	CHO 6	CHO 7	CHO 8	CHO 9	PCRS
Health Service Executive	91.3%	5.2%	5.7%	4.5%	6.4%	3.7%	5.3%	5.0%	5.7%	6.1%	5.1%	4.8%
Voluntary Agencies (Non-Acute)	90.2%	4.3%		5.3%	4.1%	4.9%	5.7%	4.1%	4.3%	4.9%	3.5%	
Overall	91.0%	4.9%	5.7%	4.7%	5.5%	4.0%	5.4%	4.3%	4.8%	5.8%	3.9%	4.8%
Certified		91.0%	93.6%	93.3%	93.3%	88.7%	89.5%	87.6%	91.2%	92.3%	87.3%	88.6%

by Staff Category

CHO / Staff Category	certified	Overall	CHO 1	CHO 2	CHO 3	CHO 4	CHO 5	CHO 6	CHO 7	CHO 8	CHO 9	PCRS
Medical /Dental	2.3%	2.3%	1.5%	2.2%	3.0%	2.4%	2.4%	1.3%	3.1%	2.4%	2.3%	
Nursing	5.3%	5.3%	5.7%	5.7%	6.6%	4.4%	5.3%	5.2%	4.5%	6.3%	4.3%	
Health & Social Care Professionals	3.7%	3.7%	4.5%	3.7%	3.8%	3.1%	4.6%	3.5%	3.1%	4.5%	3.0%	
Management Admin	4.3%	4.3%	3.6%	4.2%	5.0%	2.3%	4.8%	4.2%	5.4%	4.4%	2.8%	4.8%
General Support Staff	5.3%	5.3%	6.7%	3.5%	5.4%	4.6%	6.5%	4.1%	5.4%	6.1%	4.9%	6.4%
Other Patient & Client Care	5.5%	5.5%	7.4%	4.8%	5.6%	4.5%	6.1%	4.5%	5.4%	6.8%	4.4%	
Overall	91.0%	4.9%	5.7%	4.7%	5.5%	4.0%	5.4%	4.3%	4.8%	5.8%	3.9%	4.8%
Certified		91.0%	93.6%	93.3%	93.3%	88.7%	89.5%	87.6%	91.2%	92.3%	87.3%	88.6%

% Absence Rate: Jun 2017



Mental Health Division by Staff Category

Mental Health	certified	Overall	CHO 1	CHO 2	CHO 3	CHO 4	CHO 5	CHO 6	CHO 7	CHO 8	CHO 9
Medical /Dental	2.4%	2.4%	0.9%	2.4%	4.4%	2.7%	2.3%	0.5%	1.8%	3.0%	2.8%
Nursing	4.9%	4.9%	5.4%	3.8%	8.2%	4.0%	4.9%	4.3%	4.9%	4.9%	4.1%
Health & Social Care Professionals	3.4%	3.4%	3.8%	3.2%	4.1%	1.6%	3.1%	3.4%	3.4%	5.2%	2.8%
Management Admin	3.5%	3.5%	3.6%	3.8%	3.3%	1.9%	5.4%	1.6%	9.8%	3.7%	2.7%
General Support Staff	6.2%	6.2%	6.2%	5.5%	4.2%	3.7%	7.0%	3.9%	15.4%	9.0%	6.0%
Other Patient & Client Care	4.8%	4.8%	6.8%	3.1%	9.6%	2.7%	4.8%	3.5%	6.6%	5.7%	5.6%
Total	90.1%	4.5%	5.0%	3.6%	6.7%	3.3%	5.0%	3.3%	4.6%	5.1%	4.4%
Certified		90.1%	91.0%	92.5%	94.2%	86.3%	89.1%	88.1%	90.6%	88.9%	88.8%

Primary Care Division by Staff Category

Primary Care	certified	Overall	CHO 1	CHO 2	CHO 3	CHO 4	CHO 5	CHO 6	CHO 7	CHO 8	CHO 9	PCRS
Medical /Dental	2.6%	2.6%	1.9%	2.1%	2.2%	2.4%	3.0%	2.5%	4.8%	2.1%		
Nursing	5.2%	5.2%	5.5%	5.9%	4.9%	2.6%	4.5%	9.5%	4.7%	6.5%		
Health & Social Care Professionals	3.5%	3.5%	4.5%	3.8%	4.7%	2.5%	4.2%	2.5%	2.9%	3.8%		
Management Admin	4.5%	4.5%	3.8%	4.9%	5.2%	2.2%	4.0%	4.1%	5.8%	4.4%		4.8%
General Support Staff	4.8%	4.8%	9.1%	1.6%	5.5%	3.7%	2.1%	3.1%	5.1%	4.7%		6.4%
Other Patient & Client Care	5.4%	5.4%	4.4%	2.9%	9.3%	3.8%	7.1%	5.1%	6.8%	4.6%		
Total	91.5%	4.4%	4.7%	4.3%	5.1%	2.6%	4.2%	5.0%	4.8%	4.7%		4.8%
Certified		91.5%	93.9%	95.0%	94.6%	87.9%	92.2%	86.8%	91.2%	93.0%		88.6%

Social Care Division by Staff Category

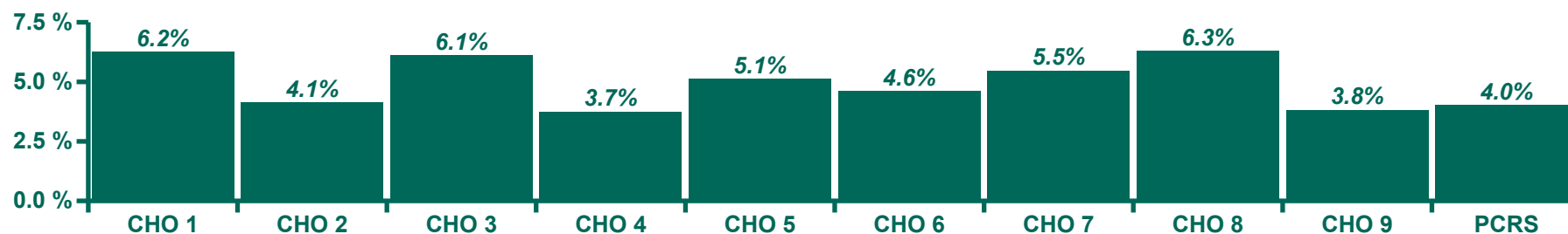
Social Care	certified	Overall	CHO 1	CHO 2	CHO 3	CHO 4	CHO 5	CHO 6	CHO 7	CHO 8	CHO 9
Medical /Dental	1.0%	1.0%	1.7%	1.2%	0.4%	0.9%	0.0%	0.6%	0.3%	0.5%	1.9%
Nursing	5.6%	5.6%	6.0%	7.3%	6.1%	5.4%	6.1%	4.4%	4.4%	7.1%	4.4%
Health & Social Care Professionals	3.8%	3.8%	5.2%	3.9%	3.4%	4.4%	5.6%	3.8%	3.2%	4.8%	3.0%
Management Admin	4.1%	4.1%	3.3%	3.3%	5.5%	2.7%	5.8%	4.8%	4.8%	5.0%	2.9%
General Support Staff	5.1%	5.1%	6.1%	3.5%	5.7%	4.9%	6.6%	4.2%	5.2%	5.1%	4.6%
Other Patient & Client Care	5.6%	5.6%	7.6%	5.3%	5.2%	4.8%	6.1%	4.5%	5.3%	7.1%	4.2%
Total	91.0%	5.2%	6.4%	5.4%	5.2%	4.8%	6.0%	4.2%	4.8%	6.5%	3.8%
Certified		91.0%	94.3%	93.0%	92.6%	89.6%	89.0%	87.8%	91.2%	93.0%	86.9%

HSE only Absence Rates- by Community Healthcare Organisation & by Division: Jun 2017

by Staff Category

CHO / Staff Category	certified	Overall	CHO 1	CHO 2	CHO 3	CHO 4	CHO 5	CHO 6	CHO 7	CHO 8	CHO 9	PCRS
Medical /Dental	2.3%	2.3%	1.3%	1.8%	1.4%	1.9%	4.0%	1.4%	5.8%	2.2%	0.8%	
Nursing	5.4%	5.4%	6.1%	5.1%	7.0%	4.0%	4.9%	6.9%	4.8%	6.6%	4.3%	
Health & Social Care Professionals	3.5%	3.5%	4.6%	3.3%	4.4%	2.7%	3.6%	2.0%	2.9%	4.3%	2.6%	
Management Admin	4.0%	4.0%	3.4%	2.9%	6.2%	2.3%	4.7%	4.0%	5.8%	4.3%	4.4%	4.1%
General Support Staff	5.8%	5.8%	8.8%	3.6%	4.8%	3.6%	7.4%	3.6%	5.1%	6.2%	7.2%	0.0%
Other Patient & Client Care	6.5%	6.5%	7.7%	4.4%	7.2%	4.9%	5.9%	5.1%	8.9%	8.7%	2.3%	
Overall	92.8%	5.1%	6.2%	4.1%	6.1%	3.7%	5.1%	4.6%	5.5%	6.3%	3.8%	4.0%
Certified		92.8%	95.1%	92.8%	94.3%	90.6%	90.3%	83.8%	92.9%	93.6%	89.7%	94.5%

% Absence Rate: Jun 2017



Mental Health Division by Staff Category

Mental Health	certified	Overall	CHO 1	CHO 2	CHO 3	CHO 4	CHO 5	CHO 6	CHO 7	CHO 8	CHO 9
Medical /Dental	2.1%	2.1%	0.9%	2.5%	0.1%	1.1%	5.2%	0.0%	3.2%	3.0%	0.7%
Nursing	4.8%	4.8%	5.6%	3.6%	7.4%	3.9%	4.4%		4.2%	5.6%	4.4%
Health & Social Care Professionals	3.0%	3.0%	1.2%	3.5%	5.3%	1.5%	3.3%	0.4%	3.7%	4.3%	0.4%
Management Admin	4.0%	4.0%	4.6%	2.2%	5.9%	2.1%	7.4%	14.3%	0.0%	2.9%	
General Support Staff	5.8%	5.8%	7.8%	6.6%	3.0%	2.8%	7.0%		5.2%	7.8%	1.6%
Other Patient & Client Care	3.7%	3.7%	5.5%	3.5%	3.9%	1.4%	2.4%		0.0%	6.2%	3.7%
Total	91.1%	4.2%	4.9%	3.5%	5.8%	2.7%	4.9%	3.3%	3.9%	5.2%	3.4%
Certified		91.1%	91.1%	92.0%	94.3%	89.0%	90.2%	94.3%	92.7%	90.2%	90.6%

Primary Care Division by Staff Category

Primary Care	certified	Overall	CHO 1	CHO 2	CHO 3	CHO 4	CHO 5	CHO 6	CHO 7	CHO 8	CHO 9	PCRS
Medical /Dental	2.9%	2.9%	2.1%	1.2%	2.6%	2.7%	3.7%	1.8%	7.5%	1.7%		
Nursing	5.2%	5.2%	5.5%	7.8%	3.4%	1.4%	3.4%	9.5%	4.8%	6.4%		
Health & Social Care Professionals	3.6%	3.6%	5.4%	3.7%	4.0%	3.0%	3.9%	2.2%	2.9%	3.8%		
Management Admin	4.0%	4.0%	3.9%	3.9%	4.3%	1.9%	3.6%	3.2%	5.6%	3.9%		4.1%
General Support Staff	5.0%	5.0%	15.9%	0.0%	4.9%	0.0%	3.1%	2.1%	3.2%	5.3%		0.0%
Other Patient & Client Care	5.2%	5.2%	3.9%	2.3%	8.2%	4.5%	7.9%	3.7%	7.8%	5.6%		
Total	94.1%	4.2%	5.4%	4.4%	4.2%	2.4%	3.9%	4.6%	4.8%	4.6%		4.0%
Certified		94.1%	96.6%	96.3%	96.3%	89.9%	93.2%	82.3%	95.1%	96.3%		94.5%

Social Care Division by Staff Category

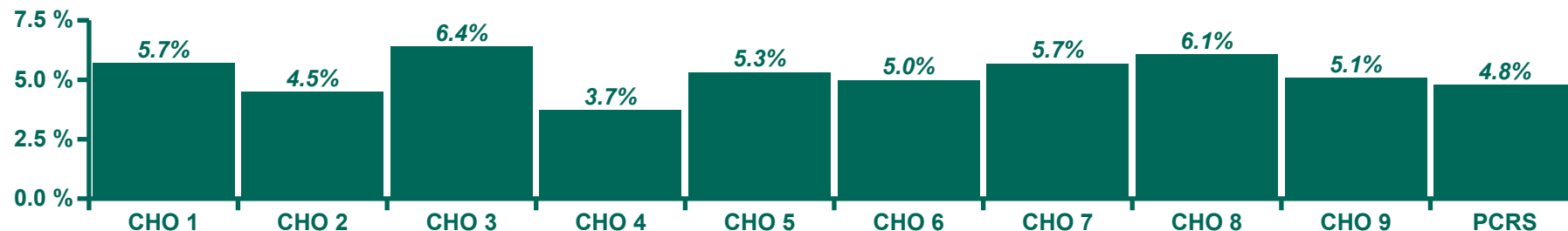
Social Care	certified	Overall	CHO 1	CHO 2	CHO 3	CHO 4	CHO 5	CHO 6	CHO 7	CHO 8	CHO 9
Medical /Dental	0.4%	0.4%	0.0%	0.0%	0.0%	0.7%	0.0%	0.0%	0.0%	1.5%	1.0%
Nursing	6.2%	6.2%	6.6%	5.2%	9.0%	5.5%	6.3%	2.8%	4.9%	7.9%	4.0%
Health & Social Care Professionals	4.1%	4.1%	5.7%	0.2%	3.4%	4.8%	3.3%	0.0%	2.1%	5.6%	5.3%
Management Admin	4.5%	4.5%	1.9%	0.9%	10.3%	2.9%	4.4%	9.5%	8.4%	6.3%	4.4%
General Support Staff	6.0%	6.0%	7.2%	4.2%	5.7%	4.1%	8.7%	4.9%	5.5%	4.7%	8.7%
Other Patient & Client Care	7.2%	7.2%	8.0%	5.1%	7.8%	5.5%	6.4%	6.6%	9.3%	9.6%	1.7%
Total	92.7%	6.3%	7.0%	4.6%	7.8%	5.1%	6.1%	4.7%	6.6%	8.3%	4.1%
Certified		92.7%	95.6%	90.7%	93.6%	91.3%	89.3%	86.4%	91.2%	93.7%	89.0%

HSE only Absence Rates- by Community Healthcare Organisation & by Division: YTD Jun 2017

by Staff Category

CHO / Staff Category	certified	Overall	CHO 1	CHO 2	CHO 3	CHO 4	CHO 5	CHO 6	CHO 7	CHO 8	CHO 9	PCRS
Medical /Dental	2.4%	2.4%	1.5%	2.2%	3.1%	2.2%	2.4%	2.9%	3.6%	2.4%	2.1%	
Nursing	5.5%	5.5%	5.7%	5.4%	7.6%	4.1%	5.2%	6.5%	4.9%	6.5%	4.6%	
Health & Social Care Professionals	3.7%	3.7%	4.5%	3.5%	4.1%	2.4%	4.6%	2.4%	3.4%	4.3%	4.1%	
Management Admin	4.4%	4.4%	3.6%	4.1%	5.2%	2.3%	4.9%	4.7%	6.1%	4.3%	3.4%	4.8%
General Support Staff	6.0%	6.0%	6.7%	3.5%	6.0%	4.1%	6.5%	4.0%	7.2%	7.4%	8.2%	6.4%
Other Patient & Client Care	6.4%	6.4%	7.4%	4.5%	7.8%	4.6%	6.3%	5.4%	8.5%	7.8%	5.6%	
Overall	91.3%	5.2%	5.7%	4.5%	6.4%	3.7%	5.3%	5.0%	5.7%	6.1%	5.1%	4.8%
Certified		91.3%	93.6%	93.8%	93.4%	88.4%	90.4%	85.8%	90.6%	91.9%	86.6%	88.6%

% Absence Rate: Jun 2017



Mental Health Division by Staff Category

Mental Health	certified	Overall	CHO 1	CHO 2	CHO 3	CHO 4	CHO 5	CHO 6	CHO 7	CHO 8	CHO 9
Medical /Dental	2.6%	2.6%	0.9%	2.4%	4.4%	2.7%	2.3%	0.6%	1.8%	3.0%	3.2%
Nursing	4.9%	4.9%	5.4%	3.8%	8.2%	4.0%	4.9%	4.4%	4.9%	4.9%	4.5%
Health & Social Care Professionals	3.4%	3.4%	3.8%	3.2%	4.1%	1.6%	3.1%	0.4%	3.4%	5.2%	3.0%
Management Admin	3.7%	3.7%	3.6%	3.8%	3.3%	1.9%	5.4%	4.3%	9.8%	3.7%	3.4%
General Support Staff	6.3%	6.3%	6.2%	5.5%	4.2%	3.7%	7.0%		15.4%	9.0%	7.2%

Other Patient & Client Care	4.9%	4.9%	6.8%	3.1%	9.6%	2.7%	4.8%	4.2%	6.6%	5.7%	5.7%
Total	90.2%	4.6%	5.0%	3.6%	6.7%	3.3%	5.0%	4.1%	4.6%	5.1%	4.9%
Certified		90.2%	91.0%	92.5%	94.2%	86.3%	89.1%	90.0%	90.6%	88.9%	88.4%

Primary Care Division by Staff Category

Primary Care	certified	Overall	CHO 1	CHO 2	CHO 3	CHO 4	CHO 5	CHO 6	CHO 7	CHO 8	CHO 9	PCRS
Medical /Dental	2.5%	2.5%	1.9%	2.1%	2.2%	2.0%	3.0%	3.2%	5.0%	2.1%		
Nursing	5.3%	5.3%	5.5%	5.9%	4.9%	2.5%	4.5%	9.8%	5.2%	6.5%		
Health & Social Care Professionals	3.6%	3.6%	4.5%	3.8%	4.7%	2.5%	4.2%	2.5%	3.2%	3.8%		
Management Admin	4.5%	4.5%	3.8%	4.9%	5.2%	2.1%	4.0%	4.3%	6.1%	4.4%		4.8%
General Support Staff	4.8%	4.8%	9.1%	1.6%	5.5%	0.0%	2.1%	2.0%	6.1%	4.7%		6.4%
Other Patient & Client Care	5.3%	5.3%	4.4%	2.9%	9.3%	3.9%	7.1%	5.9%	6.7%	4.6%		
Total	91.6%	4.5%	4.7%	4.3%	5.1%	2.4%	4.2%	5.3%	5.0%	4.7%		4.8%
Certified		91.6%	93.9%	95.0%	94.6%	87.8%	92.2%	86.5%	91.9%	93.0%		88.6%

Social Care Division by Staff Category

Social Care	certified	Overall	CHO 1	CHO 2	CHO 3	CHO 4	CHO 5	CHO 6	CHO 7	CHO 8	CHO 9
Medical /Dental	0.9%	0.9%	1.7%	0.9%	0.5%	0.9%	0.0%	0.0%	0.2%	0.6%	0.5%
Nursing	6.2%	6.2%	6.0%	7.2%	8.6%	5.0%	6.0%	3.8%	4.6%	8.1%	4.7%
Health & Social Care Professionals	4.6%	4.6%	5.2%	2.3%	3.4%	3.3%	6.4%	0.1%	5.2%	4.9%	4.7%
Management Admin	4.2%	4.2%	3.3%	2.2%	6.4%	2.9%	6.8%	11.3%	6.0%	4.8%	3.3%
General Support Staff	6.1%	6.1%	6.1%	3.4%	7.0%	4.5%	6.7%	4.8%	7.0%	6.8%	8.9%
Other Patient & Client Care	6.9%	6.9%	7.6%	5.4%	7.1%	4.9%	6.5%	5.4%	9.0%	8.6%	5.4%
Total	91.7%	6.2%	6.4%	5.5%	7.1%	4.7%	6.3%	4.7%	6.7%	7.8%	5.3%
Certified		91.7%	94.3%	93.8%	92.2%	89.6%	90.5%	82.4%	89.6%	92.6%	85.0%

Absence Rates: Section 38 Voluntary Agencies Jun 2017

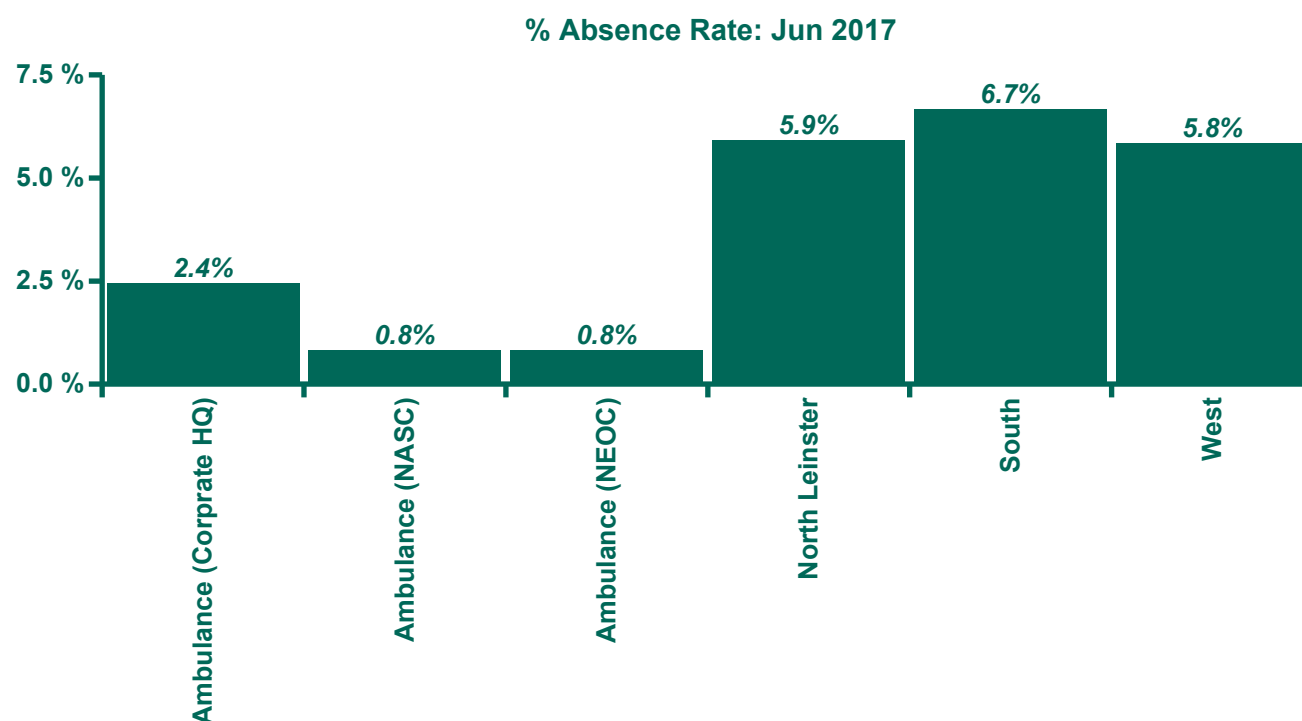
Section 38 Jun 2017		Medical /Dental	Nursing	Health & Social Care	Management Admin	General Support	Other Patient & Client Care	Total	Certified
Overall		1.7%	4.7%	3.5%	3.0%	4.0%	4.5%	4.1%	91.7%
Bros. of Charity, Galway	CHO 2	11.9%	7.3%	3.8%	1.0%	2.4%	5.0%	4.8%	90.8%
Bros. of Charity, Roscommon	CHO 2		4.7%	2.5%	7.2%	0.0%	2.4%	3.1%	96.6%
Bros. of Charity, Clare	CHO 3		0.0%	1.6%	1.5%		4.6%	3.6%	97.9%
Bros. of Charity, Limerick	CHO 3	0.0%	7.5%	2.8%	7.3%	0.0%	4.9%	5.1%	93.1%
Daughters of Charity, Limerick	CHO 3		3.6%	2.7%		2.2%	4.4%	3.6%	94.5%
Daughters of Charity, Roscrea	CHO 3		5.6%	5.7%	1.5%	3.1%	3.4%	3.8%	88.9%
Bros. of Charity, Southern	CHO 4		7.7%	3.0%	1.0%	0.0%	4.7%	4.2%	94.2%
Cope Foundation	CHO 4	6.7%	6.7%	6.7%	6.7%	6.7%	6.7%	6.7%	87.3%
Cork Dental Hospital	CHO 4	4.5%	9.7%	0.0%	0.5%	4.5%	0.4%	2.7%	94.8%
St. John of God, Kerry	CHO 4		5.0%	9.6%	4.4%	1.1%	4.0%	4.7%	88.4%
Bros. of Charity, Waterford	CHO 5	0.0%	4.7%	3.9%	4.5%	29.6%	5.8%	5.4%	87.6%
Carriglea Cairde Services	CHO 5		3.0%	2.0%	0.4%	3.6%	7.2%	4.8%	96.9%
St. Patrick's, Kilkenny	CHO 5		11.7%	3.2%	5.6%	4.8%	6.3%	6.8%	82.0%
Children's Sunshine Home	CHO 6	0.0%	3.8%	4.3%	3.5%	2.7%	4.1%	3.7%	94.5%
Dublin Dental Hospital	CHO 6	0.0%	0.0%	0.0%	1.7%	4.5%	5.5%	2.9%	93.8%
Leopardstown Park Hospital	CHO 6	9.7%	2.9%	4.4%	1.0%	1.1%	4.8%	3.3%	89.0%
National Rehabilitation Hospital	CHO 6	1.1%	1.6%	2.5%	3.3%	10.2%	5.4%	3.5%	86.8%
Royal Hospital, Donnybrook, Dublin	CHO 6	0.0%	2.8%	0.6%	0.2%	1.6%	5.5%	3.1%	85.7%
Sunbeam House Services	CHO 6		2.5%	2.0%	4.4%	1.1%	4.6%	3.2%	89.9%
St. John of God (IDS)	CHO 6	4.5%	6.0%	3.6%	3.7%	6.8%	4.6%	4.5%	87.9%
St. John of God (MHS)	CHO 6	1.3%	4.4%	4.9%	1.6%	4.7%	0.0%	3.6%	92.2%
Cheeverstown House	CHO 7	0.0%	6.5%	4.4%	3.9%	4.1%	6.3%	5.8%	93.7%
Kare, Newbridge, Co Kildare	CHO 7		1.8%	3.0%	8.0%	6.1%	4.7%	4.2%	93.9%
Our Lady's Hospice & Care Services	CHO 7	3.6%	2.6%	1.4%	5.1%	2.3%	8.5%	4.0%	93.1%
Peamount Hospital (Newcastle)	CHO 7	2.1%	5.1%	0.7%	0.3%	4.0%	4.5%	3.9%	86.8%
Stewart's Hospital, (Palmerstown)	CHO 7	0.0%	3.8%	4.3%	3.5%	2.7%	4.1%	3.7%	94.5%
Muiriosa Foundation, Laois/Offaly	CHO 8		5.3%	7.9%	0.7%	0.0%	5.1%	5.6%	96.3%
Muiriosa Foundation, Longford/Westmeath	CHO 8		4.5%	2.1%	1.6%	0.7%	2.4%	2.4%	92.1%
Muiriosa Foundation, South Kildare	CHO 8		3.5%	3.4%	10.3%	9.0%	1.4%	3.8%	92.4%
St. John of God, Drumcar	CHO 8	0.0%	7.5%	10.6%	1.2%	4.0%	4.8%	6.2%	92.9%
Central Remedial Clinic	CHO 9	0.0%	1.4%	3.2%	1.5%	12.9%	3.6%	3.4%	91.9%
Daughters of Charity, Dublin	CHO 9		4.6%	1.8%	3.6%	3.1%	3.3%	3.4%	94.1%
Incorporated Orthopaedic Hospital	CHO 9	4.4%	8.7%	6.5%	1.4%	5.7%	4.6%	5.4%	86.0%
St. Michael's House, Dublin	CHO 9	0.0%	3.6%	3.4%	1.1%	5.4%	4.3%	3.7%	91.5%
St. Vincent's, Fairview	CHO 9	0.0%	3.3%	0.0%	0.5%	2.0%	0.7%	2.5%	88.5%
Certified		1.7%	4.7%	3.5%	3.0%	4.0%	4.5%	91.7%	

Absence Rates: Section 38 Voluntary Agencies YTD Jun 2017

Section 38 Jun 2017		Medical /Dental	Nursing	Health & Social Care	Management Admin	General Support	Other Patient & Client Care	Total	Certified
Overall		1.6%	4.8%	3.6%	3.8%	4.2%	4.7%	4.3%	90.2%
Bros. of Charity, Galway	2 CHO	2.1%	7.9%	4.6%	4.3%	3.6%	5.4%	5.6%	91.3%
Bros. of Charity, Roscommon	2 CHO		5.4%	3.6%	5.5%	4.1%	4.5%	4.4%	95.5%
Bros. of Charity, Clare	2 CHO		0.0%	1.9%	1.6%		5.4%	4.2%	93.2%
Bros. of Charity, Limerick	3 CHO	0.0%	5.5%	4.6%	4.7%	4.5%	5.1%	5.0%	92.2%
Daughters of Charity, Limerick	3 CHO		3.8%	2.7%	4.4%	2.9%	3.4%	3.4%	93.7%
Daughters of Charity, Roscrea	3 CHO		5.2%	5.2%	1.9%	9.1%	3.7%	4.1%	93.1%
Bros. of Charity, Southern	3 CHO		7.9%	4.1%	1.5%	2.7%	4.3%	4.4%	91.4%
Cope Foundation	4 CHO	1.7%	6.7%	6.7%	6.7%	6.7%	6.7%	6.7%	87.3%
Cork Dental Hospital	4 CHO	4.3%	7.3%	0.0%	2.6%	4.9%	3.6%	3.9%	88.2%
St. John of God, Kerry	4 CHO		5.9%	6.9%	2.5%	3.5%	4.8%	5.1%	87.2%
Bros. of Charity, Waterford	4 CHO	0.0%	5.1%	2.8%	6.6%	16.3%	4.9%	4.8%	88.2%
Carriglea Cairde Services	5 CHO		4.6%	4.1%	1.6%	6.8%	6.5%	5.4%	94.3%
St. Patrick's, Kilkenny	5 CHO		9.4%	13.8%	3.9%	4.2%	7.2%	7.6%	80.7%
Children's Sunshine Home	5 CHO	0.0%	3.5%	4.1%	3.4%	3.3%	3.9%	3.5%	90.0%
Dublin Dental Hospital	6 CHO	0.5%	0.5%	0.4%	3.1%	4.7%	3.5%	2.9%	89.7%
Leopardstown Park Hospital	6 CHO	1.6%	3.8%	1.5%	1.4%	1.9%	5.4%	3.8%	87.0%
National Rehabilitation Hospital	6 CHO	0.7%	5.1%	3.3%	3.5%	8.0%	6.1%	4.5%	87.5%
Royal Hospital, Donnybrook, Dublin	6 CHO	0.0%	3.2%	1.6%	0.5%	2.6%	4.5%	3.2%	87.9%
Sunbeam House Services	6 CHO		5.1%	2.7%	8.8%	4.6%	3.5%	3.9%	89.6%
St. John of God (IDS) DML Region	6 CHO	0.0%	5.1%	5.4%	5.0%	3.7%	4.7%	4.9%	87.9%
St. John of God (MHS) DML Region	6 CHO	0.4%	4.5%	3.3%	1.2%	4.4%	0.0%	2.8%	84.6%
St. John of God (IDS)	6 CHO	3.3%	6.2%	3.4%	4.1%	6.5%	4.3%	4.4%	88.8%
St. John of God (MHS)	6 CHO	0.7%	3.6%	4.0%	1.2%	2.9%	0.0%	2.9%	90.9%
Cheeverstown House	6 CHO	0.0%	5.6%	3.5%	6.9%	6.5%	6.7%	5.8%	89.5%
Kare, Newbridge, Co Kildare	7 CHO		3.0%	4.8%	5.9%	3.0%	5.4%	5.0%	91.6%
Our Lady's Hospice & Care Services	7 CHO	4.1%	4.0%	1.5%	4.0%	4.6%	6.8%	4.5%	89.6%
Peamount Hospital (Newcastle)	7 CHO	0.6%	5.1%	2.2%	2.3%	4.4%	5.3%	4.6%	88.1%
Stewart's Hospital, (Palmerstown)	7 CHO	0.2%	3.7%	1.7%	4.6%	3.2%	4.0%	3.6%	94.3%
Muiriosa Foundation, Laois/Offaly	8 CHO		4.2%	5.5%	3.9%	0.5%	4.5%	4.6%	94.1%
Muiriosa Foundation, Longford/Westmeath	8 CHO		4.9%	1.8%	4.5%	1.7%	3.4%	2.9%	94.6%
Muiriosa Foundation, South Kildare	8 CHO		3.2%	4.3%	7.2%	4.0%	3.7%	4.2%	93.5%
St. John of God, Drumcar	8 CHO	0.0%	6.3%	8.2%	4.3%	4.6%	6.0%	6.2%	93.5%
Central Remedial Clinic	8 CHO	0.0%	3.4%	3.0%	1.9%	8.8%	3.8%	3.3%	83.2%
Daughters of Charity, Dublin	9 CHO		4.2%	2.6%	4.9%	3.0%	3.2%	3.5%	90.4%
Incorporated Orthopaedic Hospital	9 CHO	0.6%	5.2%	2.7%	1.8%	3.6%	6.3%	4.9%	85.7%
St. Michael's House, Dublin	9 CHO	4.0%	4.1%	3.0%	2.0%	3.7%	4.4%	3.5%	86.2%
St. Vincent's, Fairview	9 CHO	0.0%	3.2%	2.0%	2.1%	4.7%	3.4%	3.3%	90.0%
Certified		1.6%	4.8%	3.6%	3.8%	4.2%	4.7%	90.2%	

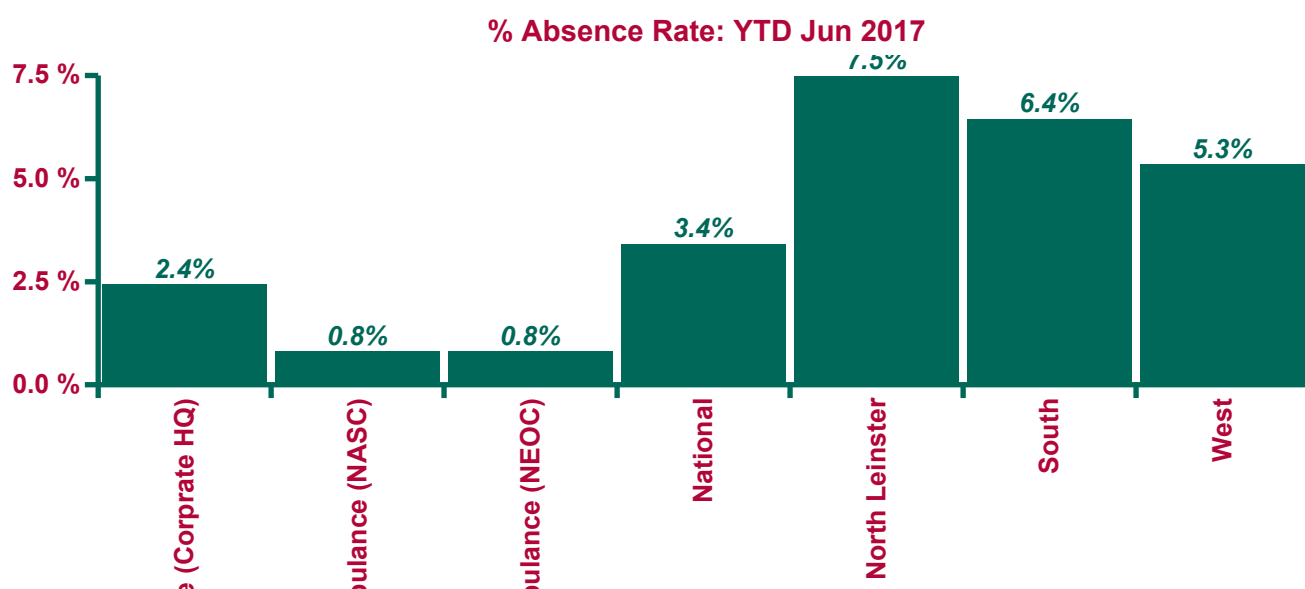
Ambulance Service Absence Rates: Jun 2017

Ambulance: Jun 2017	Medical /Dental	Nursing	Health & Social Care	Management Admin	General Support	Other Patient & Client Care	Total	Certified
Overall				3.9%	0.8%	5.3%	5.2%	88.6%
Ambulance (Corprate HQ)				2.4%			2.4%	50.7%
Ambulance (Corprate HQ)				2.4%			2.4%	50.7%
Ambulance (NASC)				6.3%		0.7%	0.8%	60.0%
Ambulance (NASC)				6.3%		0.7%	0.8%	60.0%
Ambulance (NEOC)				6.3%		0.7%	0.8%	60.0%
Ambulance (NEOC)				6.3%		0.7%	0.8%	60.0%
Ambulance (East Coast)				5.0%	0.0%	4.5%	4.3%	92.9%
Ambulance (Midland)				16.5%	3.2%	9.4%	9.5%	87.9%
Ambulance (North- Eastern)				0.0%	0.0%	6.0%	5.7%	79.6%
North Leinster				6.0%	0.8%	6.1%	5.9%	87.4%
Ambulance (South- Eastern)				0.0%	1.4%	6.8%	6.6%	87.0%
Ambulance (Southern)				5.5%	0.0%	6.9%	6.7%	94.2%
South				3.6%	0.8%	6.9%	6.7%	91.1%
Ambulance (Mid- Western)				1.2%	0.0%	2.9%	2.8%	88.1%
Ambulance (North- Western)				0.0%		5.7%	5.7%	90.9%
Ambulance (Western)				0.0%		9.1%	8.5%	90.5%
West				0.4%	0.0%	6.1%	5.8%	90.2%



Ambulance Service Absence Rates: Jun 2017

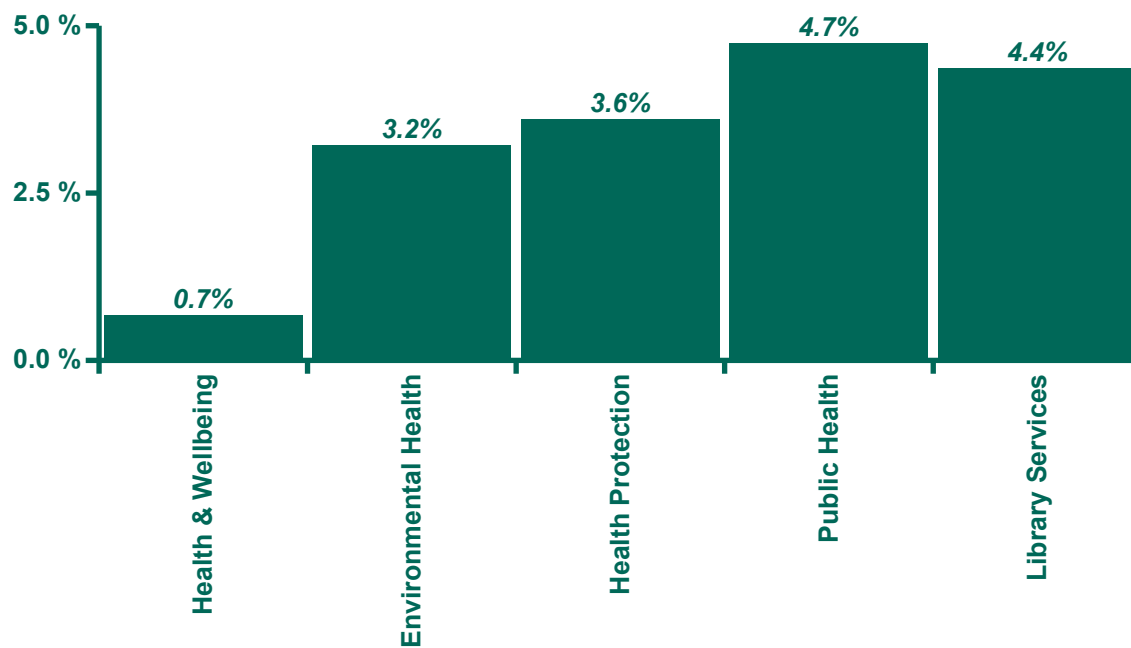
Ambulance: YTD Jun 2017	Medical /Dental	Nursing	Health & Social Care	Management Admin	General Support	Other Patient & Client Care	Total	Certified
Overall				2.3%	8.6%	6.0%	5.9%	88.3%
Ambulance (Corporate HQ)				2.4%			2.4%	50.7%
Ambulance (Corporate HQ)				2.4%			2.4%	50.7%
Ambulance (NASC)				6.3%		0.7%	0.8%	60.0%
Ambulance (NASC)				6.3%		0.7%	0.8%	60.0%
Ambulance (NEOC)				6.3%		0.7%	0.8%	60.0%
Ambulance (NEOC)				6.3%		0.7%	0.8%	60.0%
Ambulance (National)				1.4%			1.4%	57.8%
(Ambulance) NASC				3.8%		0.7%	0.8%	78.6%
(Ambulance) NEOC				4.4%		6.3%	6.2%	91.8%
National				2.9%		3.5%	3.4%	89.8%
Ambulance (East Coast)				3.2%	10.8%	6.3%	6.2%	92.5%
Ambulance (Midland)				3.0%	3.0%	10.3%	9.7%	89.8%
Ambulance (North- Eastern)				0.0%	0.0%	7.9%	7.6%	86.3%
North Leinster				2.6%	7.0%	7.8%	7.5%	89.7%
Ambulance (South- Eastern)				6.9%	6.8%	6.8%	6.8%	86.0%
Ambulance (Southern)				3.4%	13.8%	6.1%	6.2%	92.0%
South				4.0%	9.6%	6.4%	6.4%	89.3%
Ambulance (Mid- Western)				1.3%	21.7%	4.2%	4.2%	89.6%
Ambulance (North- Western)				0.0%		4.6%	4.5%	84.3%
Ambulance (Western)				0.6%		7.3%	7.0%	82.8%
West				0.8%	23.3%	5.5%	5.3%	84.9%



Health & Well-being Absence Rates: Jun 2017

Health & Wellbeing: Jun 2017	Medical /Dental	Nursing	Health & Social Care	Management Admin	General Support	Other Patient & Client Care	Total	Certified
Overall	3.9%	16.6%	3.1%	3.9%	2.2%		3.7%	90.5%
Health & Wellbeing				0.7%			0.7%	50.0%
Environmental Health			3.0%	4.3%	2.5%		3.2%	90.9%
Health Protection	5.2%	0%	5.4%	0.8%			3.6%	100.0%
Public Health	3.8%	19.7%	3.6%	4.3%	0%		4.7%	88.9%
Library Services				4.1%			4.4%	92.9%

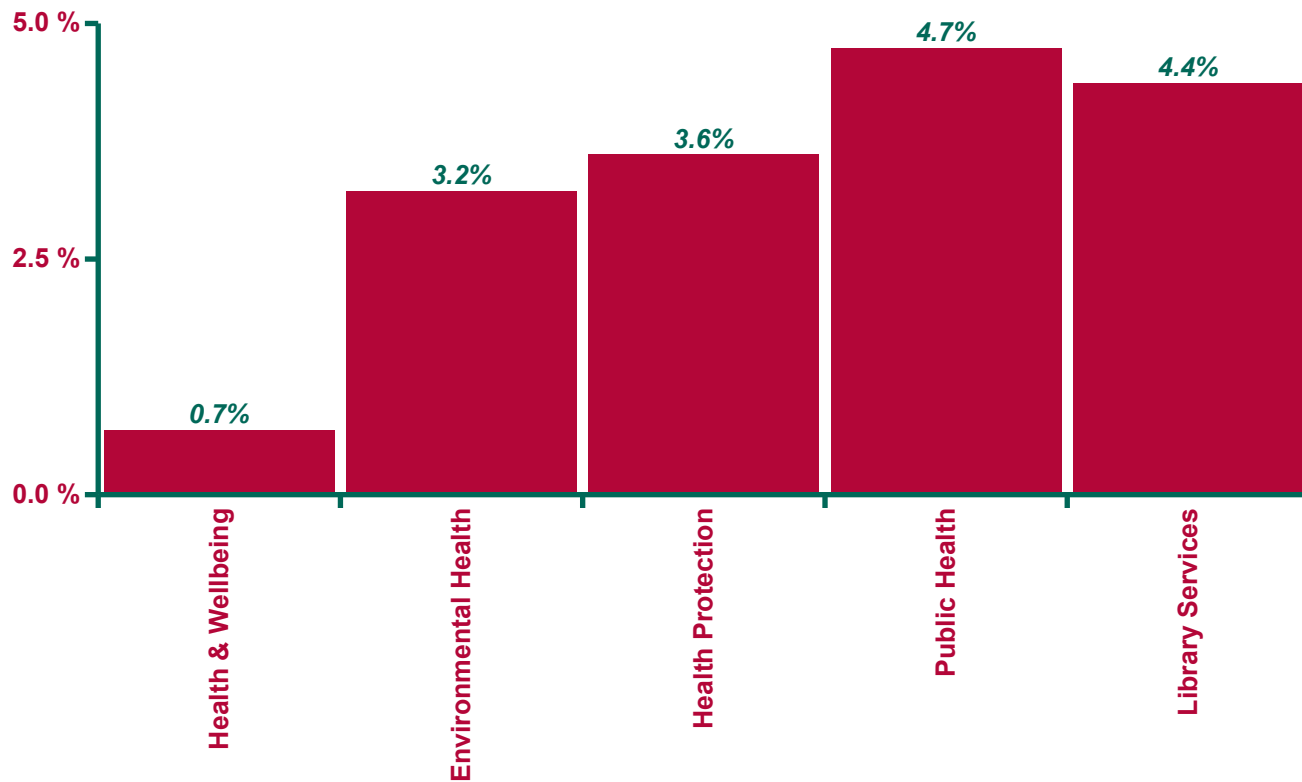
% Absence Rate: Jun 2017



Health & Well-being Absence Rates: YTD Jun 2017

HWB: YTD Jun 2017	Medical /Dental	Nursing	Health & Social Care	Management Admin	General Support	Other Patient & Client Care	Total	Certified
Overall	3.9%	16.6%	3.1%	3.9%	2.2%		3.7%	90.5%
Health & Wellbeing				0.7%			0.7%	50.0%
Environmental Health			3.0%	4.3%	2.5%		3.2%	90.9%
Health Protection	5.2%	0%	5.4%	0.8%			3.6%	100.0%
Public Health	3.8%	19.7%	3.6%	4.3%	0%		4.7%	88.9%
Library Services				4.1%			4.4%	92.9%

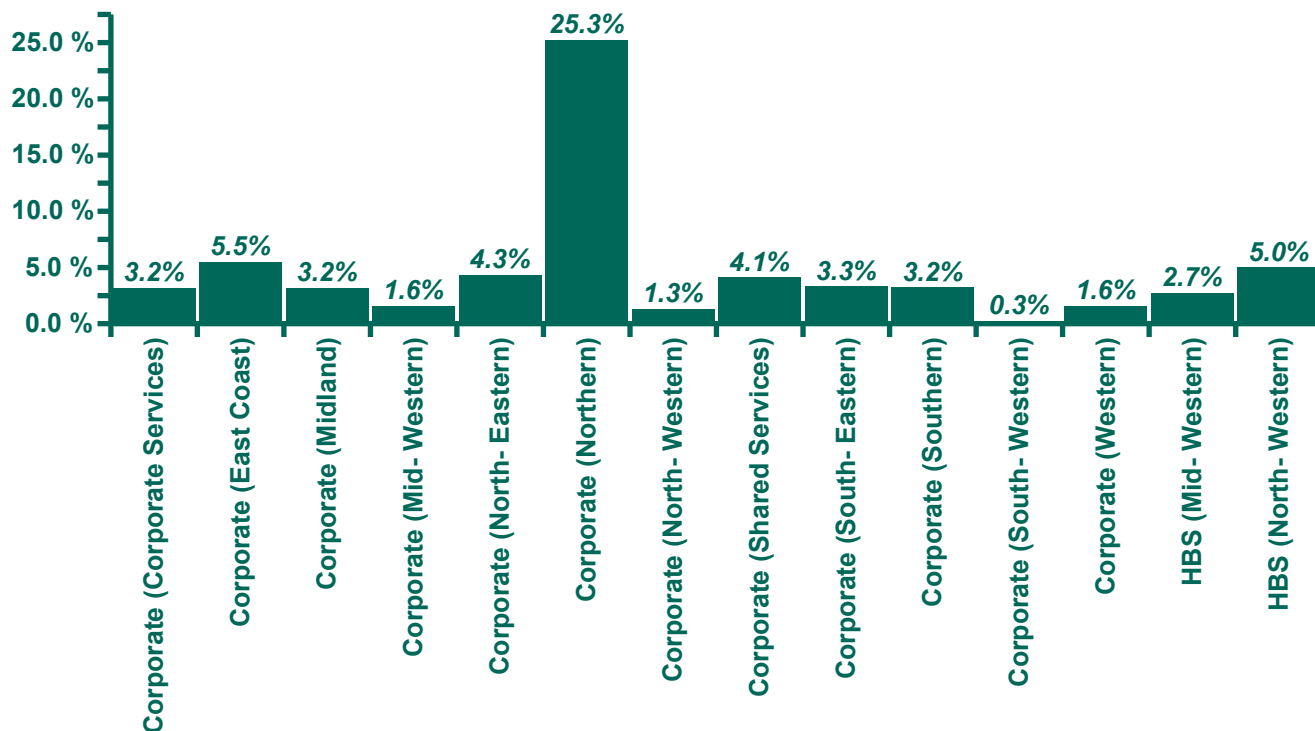
% Absence Rate: YTD Jun 2017



Corporate & HBS Absence Rates: Jun 2017

Corporate & HBS: Jun 2017	Medical /Dental	Nursing	Health & Social Care	Management Admin	General Support	Other Patient & Client Care	Total	Certified
Overall	0.0%	4.1%	6.0%	3.5%	5.2%	0.0%	3.6%	92.6%
Corporate (Corporate Services)		3.3 %		3.2 %			3.2 %	92.9%
Corporate (East Coast)				8.7 %	1.5 %		5.5 %	100.0%
Corporate (Midland)	0%	9.0 %	0.0 %	2.5 %	3.5 %		3.2 %	85.6%
Corporate (Mid- Western)	0%	0.0 %		1.9 %		0.0 %	1.6 %	93.2%
Corporate (North- Eastern)	0%	10.9 %	40.8 %	2.9 %	26.7 %		4.3 %	93.1%
Corporate (Northern)				15.0 %	161.0 %		25.3 %	100.0%
Corporate (North- Western)	0%	0.0 %	0.0 %	1.7 %		0.0 %	1.3 %	96.8%
Corporate (Shared Services)				4.2 %	0.0 %		4.1 %	87.6%
Corporate (South- Eastern)	0%	0.0 %	0.0 %	3.6 %	2.4 %		3.3 %	96.1%
Corporate (Southern)	0%	0.0 %	0.0 %	3.8 %			3.2 %	87.3%
Corporate (South- Western)				0.3 %			0.3 %	100.0%
Corporate (Western)	0%	4.9 %	0.0 %	1.2 %	0.0 %		1.6 %	100.0%
HBS (North- Western)			0.0 %	5.2 %	3.0 %	0.0 %	5.0 %	96.0%
HBS (Mid- Western)				3.4 %	0.0 %		2.7 %	89.6%

% Absence Rate: Jun 2017



Corporate & HBS Absence Rates: YTD Jun 2017

Corporate & HBS: YTD Jun 2017	Medical /Dental	Nursing	Health & Social Care	Management Admin	General Support	Other Patient & Client Care	Total	Certified
Overall	4.5%	4.7%	1.9%	4.3%	3.7%	2.5%	4.3%	92.8%
Corporate (Corporate Services)		2.2 %		3.6 %			3.6 %	90.6%
Corporate (East Coast)				5.9 %	1.0 %		4.6 %	94.7%
Corporate (Midland)	7.33	3.4 %	0.6 %	3.9 %	2.9 %	0.0 %	3.8 %	90.5%
Corporate (Mid- Western)	0%	3.5 %		4.9 %	2.7 %	1.6 %	4.5 %	93.7%
Corporate (North- Eastern)	0%	15.6 %	7.1 %	4.2 %	4.7 %		5.1 %	94.9%
Corporate (Northern)		0.0 %		3.2 %	5.5 %	1.6 %	3.8 %	96.8%
Corporate (North- Western)	0%	2.4 %	0.3 %	4.5 %	1.3 %	0.0 %	4.1 %	94.4%
Corporate (Shared Services)				5.8 %	0.0 %		5.7 %	91.0%
Corporate (South- Eastern)	3.74	5.2 %	6.1 %	3.4 %	1.9 %		3.4 %	92.8%
Corporate (Southern)	0%	0.0 %	0.0 %	3.8 %	4.4 %	4.1 %	3.6 %	87.3%
Corporate (South- Western)				0.2 %	6.2 %		4.7 %	90.9%
Corporate (Western)	0%	1.8 %	1.0 %	4.3 %	0.0 %		3.9 %	96.7%
HBS (North- Western)			0.0 %	5.2 %	3.0 %	0.0 %	5.0 %	96.0%
HBS (Mid- Western)				3.4 %	0.0 %		2.7 %	89.6%

% Absence Rate: YTD Jun 2017

