



Oifig Stiúrthóir na Seirbhíse Náisiúnta Otharcharranna,
An tSeirbhís Náisiúnta Otharcharranna,
Áras na hAbhann,
Crosbhóthar Thamhlachta,
Tamhlacht,
Baile Áth Cliath D24 XNP2.
Fón 01 4631608.
Riomhphost: pauline.mcdonagh@hse.ie

Office of the Director of the National Ambulance Service,
National Ambulance Service,
Rivers Building,
Tallaght Cross,
Tallaght,
Dublin D24 XNP2.
Telephone: 01 4631608.
Email: pauline.mcdonagh@hse.ie

Mr. John Lahart TD,
Dáil Éireann,
Leinster House,
Dublin 2.

17th November 2020.

Re: PQ 34306/20. To ask the Minister for Health the percentage of clinical status 1 ECHO incidents responded to by first responder in 7 minutes and 59 seconds or less; and the percentage of clinical status 1 DELTA incidents responded to by a patient-carrying vehicle in 7 minutes and 59 seconds or less by each ambulance station by each month in the year to the end of October 2020 or latest date available in tabular form.

Dear Deputy Lahart,

The Health Service Executive has been requested to reply directly to you in the context of the above Parliamentary Question, which you submitted to the Minister for Health for response.

The National Ambulance Service reports on 18 minute 59 second response times for 'ECHO' and 'DELTA' category calls. The table below outlines the percentage response times for the National Ambulance Service (by former Health Board areas) and Dublin Fire Brigade for the period January 2020 up to and including September 2020 (latest available data).

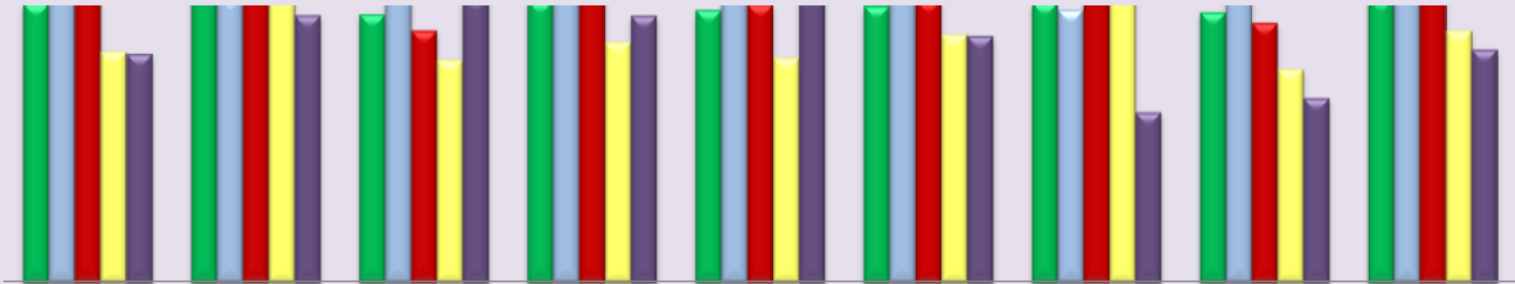
I trust this information is of assistance to and should you require additional information please do not hesitate to contact me.

Yours sincerely,

Pauline McDonagh - Senior Executive Officer.

Regional % of Clinical Status ECHO incidents responded to within 18 minutes and 59 seconds or less

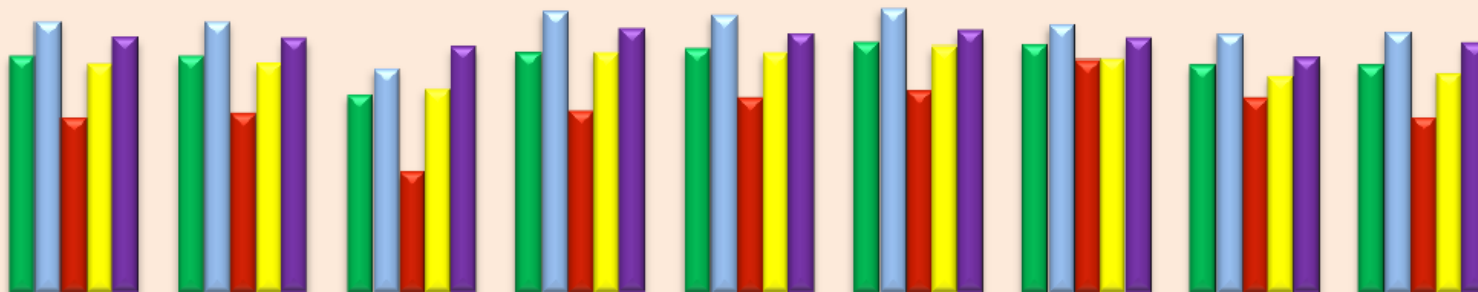
Regional % of Clinical Status 1 ECHO incidents responded to in 18 minutes and 59 seconds or less



	Jan-20	Feb-20	Mar-20	Apr-20	May-20	Jun-20	Jul-20	Aug-20	Sep-20
■ National	81%	83%	78%	81%	79%	80%	81%	79%	82%
■ North Leinster	93%	82%	84%	87%	83%	88%	79%	87%	87%
■ Dublin Fire Brigade	83%	88%	75%	83%	80%	81%	83%	76%	83%
■ South	70%	82%	68%	72%	69%	74%	87%	66%	75%
■ West	70%	78%	82%	78%	83%	73%	57%	60%	71%

Regional % of Clinical Status DELTA incidents responded to within 18 mins and 59 seconds or less

Regional % of Clinical Status 1 DELTA incidents responded to within 18 minutes and 59 seconds or less



	Jan-20	Feb-20	Mar-20	Apr-20	May-20	Jun-20	Jul-20	Aug-20	Sep-20
■ National	55%	55%	46%	56%	57%	58%	58%	53%	53%
■ North Leinster	63%	63%	52%	66%	65%	66%	62%	60%	61%
■ Dublin Fire Brigade	41%	42%	28%	42%	46%	47%	54%	45%	41%
■ South	53%	54%	48%	56%	56%	57%	55%	51%	51%
■ West	59%	59%	57%	61%	60%	61%	59%	55%	58%