



Oifig an Cheann Seirbhíse  
Seirbhíse Meabhairshláinte an Mheán Iarthair  
Ospidéal Naomh Iosaef  
Sráid Mulgrave  
Luimneach  
V94C8DV

Office of Head of Service,  
HSE Mid West Mental Health Services  
St Joseph's Health Campus  
Mulgrave Street  
Limerick  
V94 C8DV

T: 061 461435  
061 461313

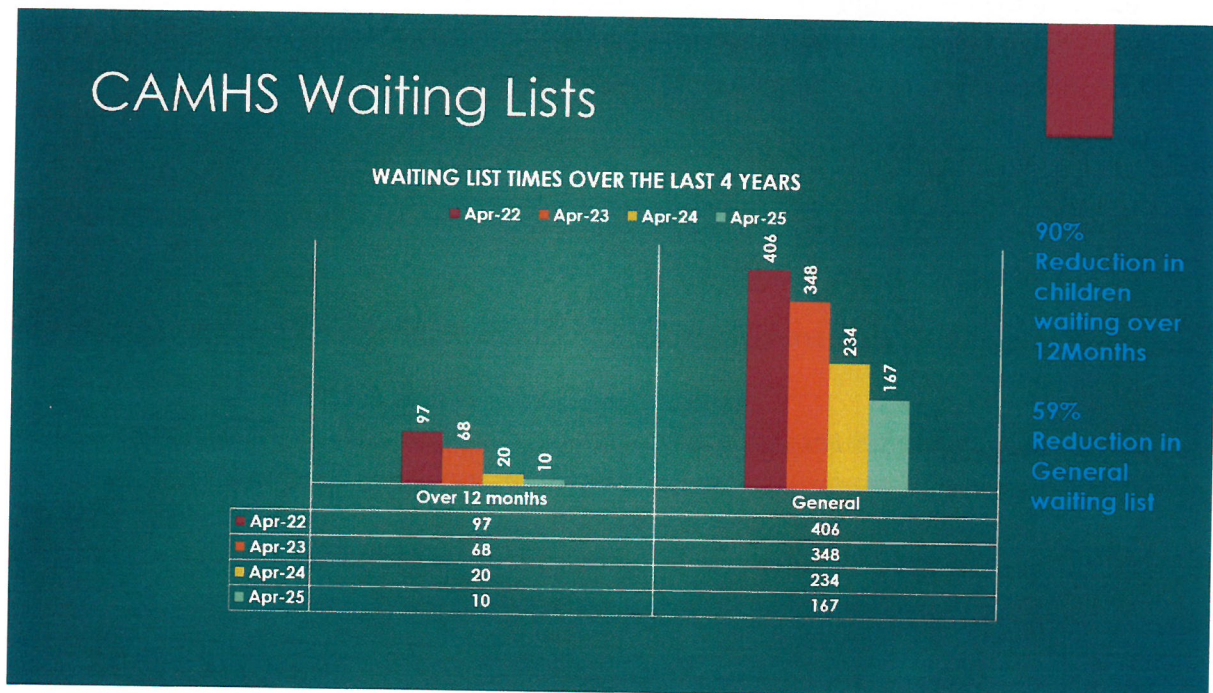
Donna McGettigan  
Leinster House,  
Kildare Street,  
Dublin 2

27<sup>th</sup> June 2025

**PQ REF 31825/25: To ask the Minister for Health the number of people left the waiting list for CAHMS in county Clare for each of the past four years; the reasons they left the list, in tabular form,; and if she will make a statement on the matter.**

Dear Deputy McGettigan

The Health Service Executive has been requested to reply directly to you in the context of the above representation, which you submitted to the Minister for Health for response.



We don't hold the data to be able to give an accurate breakdown of the reasons why people leave the waiting list.

In the main, they are taken off the list because they have been seen and opened by a CAMHS Team.



The numerous additional posts and new CAMHS Services that have been put into CAMHS Mid West over the last 2 years has massively helped in the reduction of the Waiting List, to the point that the Mid West now has the shortest CAMHS waiting list in the country.

### **CAMHS Services**

The Mid West CAMHS service is delivered across 7 Community teams, over a geographical area of approx. 12,267Sq km. Census 2022 figures identify that the population of Clare, Limerick and North Tipp has a total of 413,296 population.

There are 7 CAMHS teams – East Clare, West Clare, East Limerick, Central Limerick, West Limerick, North Tipp East and North Tipp West teams

In general, all referrals of children and young people to CAMHS are prioritised according to the acuity of the presentation outlined in the referral. Increased numbers of children are currently presenting with acute mental health difficulties, including eating disorders and suicidal ideation. These young people require urgent interventions, and this can have an impact on those already on the waiting list.

Reducing overall waiting times for CAMHS is a key priority for Mid West Mental health Services and we are making/have made a number of service investments in CAMHS to help achieve this. These include:

- The number of CAMHS registered consultants in the Mid West increased to 7.2WTE in March 2023, up from 3.6WTE in January 2022. These consultants are also being supported through the appointment of additional Non-Consultant Hospital Doctors (NCHDs).
- Additional posts are being progressed to strengthen CAMHS Teams across the Mid West.
- A new consultant-led multidisciplinary CAMHS Hub is being developed in Limerick. This an alternative model to providing inpatient care, involving treatment at home or in a day hospital, and is designed to meet needs of existing CAMHS service users with complex needs from throughout the Mid West. Recruitment is currently underway.





### **Mid West Mental Health Services - Service Improvements that have been achieved:**

#### **CAMHS:**

- Medical Governance deficits in CAMHS addressed.
- Governance Structure for CAMHS now in Place.
- Clinical Director for CAMHS now in place.
- The Planning Permission request has been submitted for CAMHS Day Hospital.
- CAMHS over 12 month waiting list has been reduced by 72% and the overall waiting list is down by 33% in the two years.
- 7th CAMHS team commenced in January 2024.
- CAMHS Paediatric Liaison Service in development. Received Ministerial approval.
- MHID Child Consultant now in the role and the service has commenced.
- CAMHS Hub about to progress. Consultant position has been offered and accepted.

#### **CAMHS Hub:**

A new consultant-led multidisciplinary CAMHS Hub was established in the Midwest Area in Q4 2024; the CAMHS Hub is based in Limerick City but will provide out-reach services as required. The CAMHS Hub is an alternative model to providing inpatient care, involving treatment at home or in a day hospital, and is designed to meet needs of existing CAMHS service users with complex needs from throughout the Mid-West.

The CAMHS Hub aims to:

- Provide brief Mental Health Interventions to support CAMHS teams in delivering enhanced responses to children, young people and their families/carers, in times of acute mental health crisis.
- Provide timely access to expert assessment and brief intervention for young people requiring urgent care.
- Provide individual support to young people with high risk acute mental health needs (step up) in collaboration with CAMHS Teams.
- Promote the use of telehealth as a blended approach to provide timely support and care to service users, family and carers.
- Ensure that the CAMHS Hub actively promotes and engages service user, family and carers in all aspects of care and recovery planning.
- Ensure that the CAMHS Hub actively engages in collaboration with CAMHS teams to support all service users accepted onto the CAMHS Hub caseload

In addition, if, while a young person is waiting for an appointment there is a significant deterioration in the mental state of the young person resulting in an acute mental health presentation requiring urgent assessment an urgent appointment maybe sought through the GP. This service is available from Monday to Friday from 9.30am



to 5.00pm. The parents/guardians of all young people placed on the waiting list are informed of this in writing and the communication also includes advice on how to contact the service if the presenting difficulties escalate and/or if the mental health of the young person deteriorates.

#### **Additional posts for CAMHS**

A number of additional posts are being progressed to strengthen CAMHS Teams across the Mid-West- these additional posts include a Specialist Principal Psychologist, Speech & Language Therapy Manager, Occupational Therapy Manager within the Midwest CAMHS.

A commitment to the development of a number of specialist CAMHS teams are in recruitment phase.

**CAMHS Eating disorder Team:** Eating disorders have the highest mortality and morbidity within mental health and they pose significant health, social and economic cost to people with eating disorders, to their families and to society. Early intervention, evidence based care, and consistent support make a profound difference to the clinical and personal recovery of people who are affected by eating disorders, including to those in adolescence when so many eating disorders begin. Through its support of the National Clinical Programme for Eating Disorders, the HSE has prioritised the provision of high quality, accessible and value for money eating disorder services in Ireland. In the absence of a pre-existing dedicated eating disorder infrastructure or strategy, this Model of Care document has been developed in order to guide the delivery of those aims

**Paediatric liaison Team:** The model of care in paediatric liaison psychiatry is split between emergency, inpatient and outpatient services, with some services being limited to normal office hours and others, e.g. in EDs, offering 24/7 on-call provision. In line with other CAMHS services, the paediatric liaison team should be multidisciplinary. The particular issues that benefit from input from a paediatric liaison psychiatry service include:

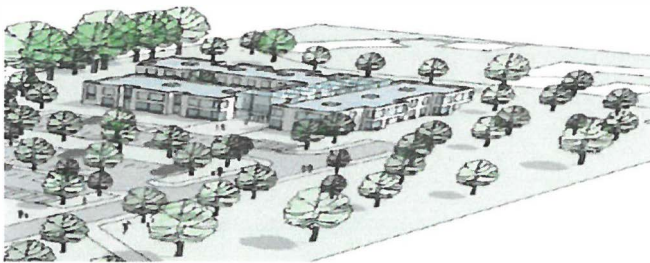
- self-harm and children presenting with suicidal ideation
- mental illnesses such as depression, psychosis and post-traumatic stress disorder
- psychosomatic diagnostic problems in children admitted primarily with physical symptoms but which, on assessment, have mainly psychological or social causation
- mood disturbance or psychotic symptoms due to chronic or long-term mental illness or which are treatment induced, e.g. drug-induced psychosis



- evaluation of children and adolescents who are having difficulties adhering to their medical treatment regimen
- evaluation and treatment of infants with feeding disorders and growth deficiency
- evaluation and treatment of children and adolescents with eating disorders and growth deficiency • pre-surgical psychiatric evaluation, e.g. surgery for epilepsy

**CAMHS Day Hospital and Head Quarters:**

Capital Funding has been secured and work is underway with estates on the development of a CAMHS Headquarters and Day Hospital. Design Team has been appointed. We have done a service user engagement with young people regarding their vision for how this new building will look and feel.



Yours Sincerely,

---

**Nuala Kelly**  
**Head of Service - Mental Health Services,**  
**HSE Mid West**

