



## Príomhoifigeach Daoine

Feidhmeannacht na Seirbhísí  
Sláinte Ospidéil Dr. Steevens',  
Baile Átha Cliath 8, D08 W2A8

## Chief People Officer

Health Service Executive,  
Dr Steevens' Hospital,  
Dublin 8, D08 W2A8

[www.hse.ie](http://www.hse.ie)  
[@hselive](mailto:@hselive)

t 01 635 2319  
e [nationalhr@hse.ie](mailto:nationalhr@hse.ie)

Peadar Tóibín, TD

07 July 2025

**PQ 35043/25 (Health): To ask the Minister for Health the doctor to patient ratio in Irish hospitals, broken down by hospital. - Peadar Tóibín**

**PQ 35044/25 (Health): To ask the Minister for Health the consultant to patient ratio in Irish hospitals, broken down by hospital. - Peadar Tóibín**

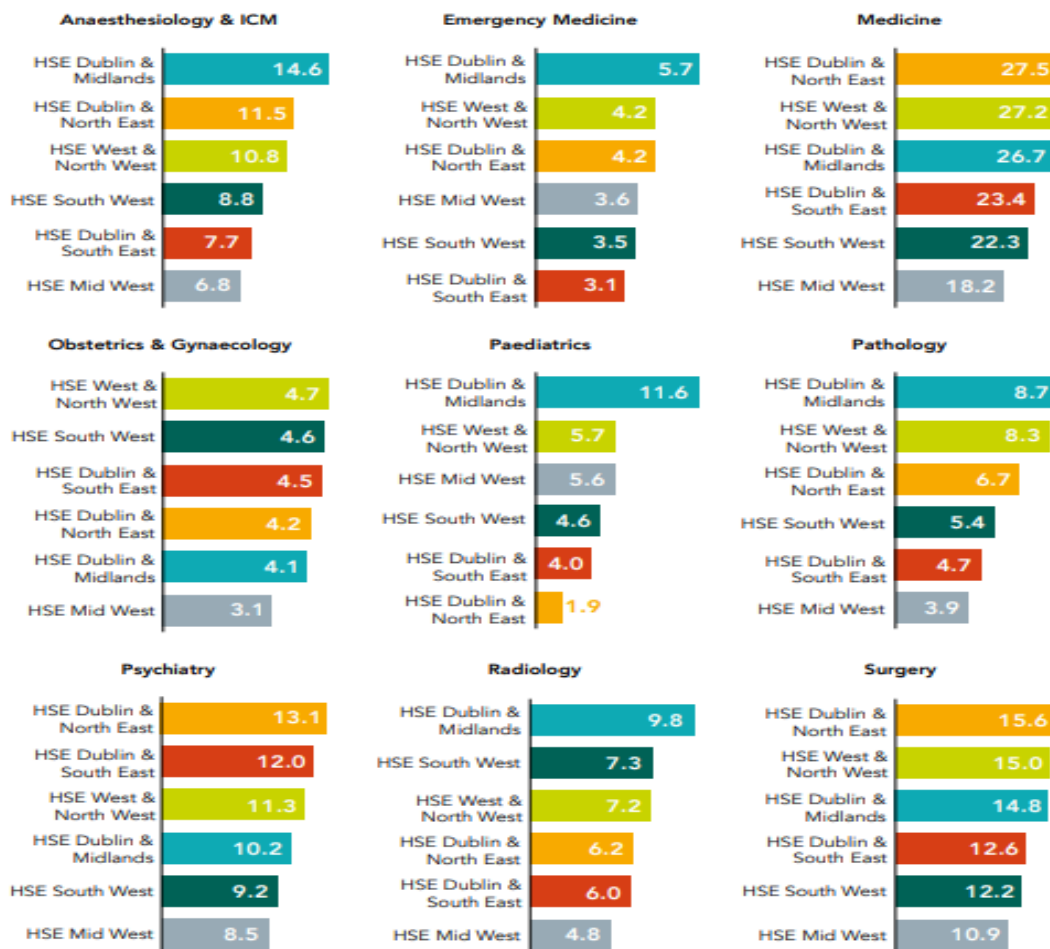
Dear Deputy,

I refer to your recent Parliamentary Question which was sent to the HSE for response.

To provide the Deputy with a satisfactory response, the HSE National Doctors and Training Programme (NDTP) and HSE Strategic Workforce Planning & Intelligence Unit confirmed they do not collect or report on data relating to ratios of medical staff to patients.

However, the following figure provides a breakdown of the number of consultants per 100,000 of the population by Health Region and medical discipline.

**Figure 38: Number of Consultants per 100,000 of the Population by Health Region & Medical Discipline**



Note: The consultants working in Children's Health Ireland is included in the Dublin Midlands Health Region. Consultants in Breast Check and Public Health are not included in the above figures. Medical Ophthalmology is not included due to the mix of consultants and specialists delivering the service.

Source: <https://www.hse.ie/eng/staff/leadership-education-development/met/plan/medical-workforce-analysis-report-2024-2025.pdf>

I trust this is of some assistance.

Yours sincerely,

---

Mairéad Ryan  
National HR