

**Minutes of Regional Health Forum West meeting held on
Tuesday, 22nd November 2022 at 1.00pm in the Education Centre, Merlin Park,
Galway.**

Miontuairiscí chruinniú an Fhóraitm Sláinte Réigiúnaigh a tionóladh Dé Máirt, 22^ú Samhain 2022 ag 1.00 i.n, i
Seomra 1 an tIonad Oideachais, Feidhmeannacht na Seirbhíse Sláinte, Campas Ospidéal Páirc Mheirlinne,
Gaillimh

Chairperson: Cllr Gerry McMonagle

Members Present	Members Present (continued)	Members Absent
Cllr Finola Armstrong McGuire	Cllr Mary Howard	Cllr Bill Chambers
Cllr Declan Bree	Cllr Michael Kilcoyne	Cllr Tom Crosby
Cllr Ciaran Brogan	Cllr Donagh Killilea	Cllr Frankie Daly
Cllr John Carroll	Cllr Dara Mulvey	Cllr John Egan
Cllr Liam Carroll	Cllr Cillian Murphy	Cllr Francis Foley
Cllr Tom Conaghan	Cllr Declan McDonnell	Cllr Seán Hartigan
Cllr John Connolly	Cllr Martina O'Connor	Cllr Martin McLoughlin
Cllr Gerry Crawford	Cllr Dr Evelyn Francis Parsons	Cllr Dan McSweeney
Cllr John Cummins	Cllr Peter Roche	Cllr John O'Hara
Cllr Albert Doherty	Cllr Peggy Ryan	Cllr John Sheahan
Cllr Paddy Farrell	Cllr Tony Ward	Cllr Kevin Sheahan
Cllr Blackie Gavin		
Cllr Donal Gilroy	Members Apologies	
Cllr Liam Grant	Cllr Seamus Morris	
Cllr Felim Gurn	Cllr Daithí Ó Cualáin	

In attendance:

Tony Canavan, Executive Lead, Regional Health Forum/CEO, Saolta University Health Care Group
Ann Cosgrove, Chief Officer, Saolta University Health Care Group
Maria Bridgeman, Chief Officer Community Healthcare Midwest
Breda Crehan-Roche, Chief Officer, Community Healthcare West
Dermot Monaghan, Chief Officer, CHO, Area 1
John Joe McGowan, Chief Ambulance Officer - West
Joe Hoare, Assistant National Director Estates (West)
Mary Warde, Head of Primary Care, Community Healthcare West
Charlie Meehan, Head of Mental Health, Community Healthcare West
Marian Cavanagh, Regional Health Forum Office
Anna Lyons, Regional Health Forum Office

823/102/22

Minutes of previous meeting – 27th September 2022

The minutes of the previous meeting held on the 27th September 2022 were proposed by Cllr Tony Ward and seconded by Cllr John Carroll and adopted.

Cllr Declan McDonnell noted an amendment was required to the Regional Health Forum minutes of 27th September 2022. The minutes have been amended to state 'Galway City Council'.

824/102/22 Matters Arising:

W101Q3395 - Home Help Louisburgh

Action: Breda Crehan-Roche to revert to Cllr Kilcoyne regarding Home Help availability in Louisburgh.

W101Q3404 - Agricultural Lands Toghermore:

Action: Joe Hoare to revert to Cllr Killilea regarding the agricultural lands at Toghermore in relation to leasing.

W101Q3412 - Old Mortuary Merlin Park:

Action: Joe Hoare to revert to Cllr Declan McDonnell regarding the timeframe for the demolition of the Old Mortuary in Merlin Park within the context of the overall plan for Merlin Park University Hospital.

825/102/22 Chairman's Business:

826/102/22 Questions:

W102Q3465 – Covid-19 Bonus Payment from the State:

Action: Cllr Michael Kilcoyne to be provided with the supporting documentation mentioned in the response to the above question.

W102Q3468 - Community Paramedic Programme:

Action: Cllr Cillian Murphy to provide JJ McGowan with the specifics of a case regarding a person who was categorised as a low acuity call and experienced a long wait for the ambulance, for NAS to review.

W102Q3469 – Community Healthcare Network Manager West Clare:

Action: Maria Bridgeman to provide Cllr Murphy with the timeframe on the appointment of the Community Healthcare Network Manager West Clare.

W102Q3492 - Lifford Community Hospital:

Action: Dermot Monaghan to revert to Cllr Crawford regarding when will the Day Care Services return to Lifford Community Hospital.

Action: Dermot Monaghan to provide Cllr Crawford with what services will be remaining in Scally Place Primary Care Centre Letterkenny.

W102Q3494 - Delayed Discharges Saolta University Health Care Group:

Action: Tony to provide an explanatory note to all Regional Health Forum Members regarding the categories used for delayed discharges.

W102Q3495 – HSE National Support Team for ED at UHG:

Action: Ann Cosgrove to keep Cllr John Connolly updated on the ongoing work of the HSE Support Team.

W102Q3505: Community Intervention Teams:

Action: Dermot Monaghan to provide Cllr McMonagle with an update on the number of hospital admission avoidance resulting from the work of the Community Intervention Teams.

W102Q3506 - Home Help on-call Service at weekends:

Action: Dermot Monaghan to provide a written response to Cllr Bree regarding the Home Help on-call system for out of hours cover.

W102Q3508 - Delayed Discharges Sligo University Hospital:

Action: Cllr Bree to be provided with the Appendix for delayed discharges at Sligo University Hospital.

W102Q3511 - Enhanced Community Care Network Location:

Action: Joe Hoare to provide Cllr Parsons with the exact figure for the refurbishment works which is currently underway on the East Wing (former Our Lady's Ward) of the former admission building located behind the CNU.

Action: Breda Crehan-Roche to revert to Cllr Parsons with the number of staff employed for the East Galway and South Roscommon Community Health Network.

W102Q3513 – Number of Admissions to NRH Brain Injury and Stroke Specialty Programme:

Action: RHF office to follow up with the National Rehabilitation Hospital regarding a response to the data relating to admissions from the HSE West area to the NRH for Brain Injury and Stroke Speciality Programme since 2019 to date.

W102Q3514 – Primary Care Centre at Cliffoney:

Action: Dermot Monaghan to send on the contact details to Cllr Gilroy regarding the possible use of the Primary Care Centre, Cliffoney by a Voluntary Agency.

W102Q3517 – ED Patient Experience Time at Sligo University Hospital:

Action: Tony to provide Cllr Gilroy and all Regional Health Forum members with an explanatory note on how KPI's are used and reviewed.

827/102/22 Motions:

W102M138 - Retention of Trainee Doctors and Nurses:

This Motion was proposed by Cllr Felim Gurn and seconded by Cllr Tony Ward.

Action: RHF Office to forward this Motion to the Recruitment Resources Steering Group.

W102M139 - Leitrim Community Car Scheme:

This Motion was proposed by Cllr Finola Armstrong McGuire and seconded by Cllr Paddy Farrell.

Action: Dermot Monaghan to provide a response to the Regional Health Forum Members in relation to the above Motion.

828/102/22 Any Other Business:

The schedule of meetings for 2023 was ratified at the Regional Health Forum meeting 22nd November 2022 and was agreed by all members.

829/102/22 Date & Time of Next Meeting:

Future Meetings:

The next Regional Health Forum Committee Meeting will take place on Tuesday 13th December 2022 at 1pm in Nenagh.

The next Regional Health Forum West meeting will take place on Tuesday 28th February 2023 at 2pm.

This concluded the business of the meeting.

Signed:

Cathaoirleach/Chairman

Adopted at the Regional Health Forum West meeting

QUESTIONS AND RESPONSES RECEIVED
REGIONAL HEALTH FORUM WEST – 28th FEBRUARY 2023

Number:	QUESTION	RAISED BY	Page No.
W103Q3518	Recruitment and retention in the NAS 2022.	Cllr L Grant	4
W103Q3519	Data re the operation of the ED in UHL in 2022.	Cllr C Murphy	4-6
W103Q3520	Options (MAU/LIU Ennis) for treatment of NAS low priority call patients (approx. 2270) brought to ED in UHL 2022.	Cllr C Murphy	6-8
W103Q3521	24 hour time chart re patient flow by county through the ED in UHL for 2020 & 2021.	Cllr C Murphy	8-9
W103Q3522	NAS Ambulance Cover staffing at Kilrush.	Cllr C Murphy	9-10
W103Q3523	Ambulances, staffing and current number units at the Tuam Ambulance Base.	Cllr D Killilea	10
W103Q3524	Plans for the lands at Toghermore, Tuam and possible sports campus.	Cllr D Killilea	10
W103Q3525	“The Grove Hospital” and “Community Nursing Unit” in Tuam, completion dates, “on budget” and staffing.	Cllr D Killilea	10-12
W103Q3526	Increasing bed capacity at all hospitals to relieve the pressure in the A&E.	Cllr F Gurn	12-13
W103Q3527	Expansion of Primary Care Centre services and hours to take pressure of A&E.	Cllr F Gurn	13-15
W103Q3528	Medical information on a data base with a unique password to facilitate doctors accessing medical records within the system.	Cllr F Gurn	15
W103Q3529	Any plans for increased capacity in SUH re North West area for refugees needing medical/counselling services.	Cllr F Gurn	15-16
W103Q3530	Primary Care Centre in Castlebar: service hours, any increase in hours proposed, when is it proposed to operate on a 24 hr per day basis, effect on MUH wait lists?	Cllr M Kilcoyne	16-19
W103Q3531	Patient trolley wait times numbers, including longest ED wait till bed allocated MUH, 1/11/22 – 31/01/23.	Cllr M Kilcoyne	19
W103Q3532	Medical Card GP practices in Mayo.	Cllr M Kilcoyne	19-20
W103Q3533	At the 31 st January 2023; patient wait list for Consultant appointment MUH. Following a first consultation numbers awaiting a procedure to be carried out?	Cllr M Kilcoyne	20-21
W103Q3534	Galway Racecourse site; services, numbers month on month last 12 months, rental and operating costs, use of Galway Airport Site for these services?	Cllr D Killilea	21
W103Q3535	Update in relation to the Primary Care Centre for An Spideail.	Cllr D Ó Cualáin	21-22
W103Q3536	Update on 13 beds closed in Aras Mhic Dara in An Cheathrú Rua.	Cllr D Ó Cualáin	22
W103Q3537	HSE CHW actions to re-open The Day Centre in Aras Mhic Dara in An Cheathrú Rua? Can I get assurances from the management team that the centre will re-open?	Cllr D Ó Cualáin	22
W103Q3538	Any NAS plans to increase the number of staff and ambulances and/or provide a rapid response vehicle to be based out of An Cheathrú Rua Ambulance Base?	Cllr D Ó Cualáin	22
W103Q3539	Hip replacement wait list MUH, is there a longer waiting list for Medical Card patients?	Cllr J O’Hara	22-23
W103Q3540	Transport to Dublin Hospital by ambulance.	Cllr J O’Hara	23

W103Q3541	Update on the current status of the NOWDOC Surgery at Oldtown, Letterkenny, can the HSE confirm if they are presently building a small surgery for CAREDOC at the Hub Facility at Kilmacrennan Road, Letterkenny?	Cllr G McMonagle	23
W103Q3542	Can HSE Estates outline what their short/Long Term plans are for the vacant hospital buildings at St Conals Letterkenny.	Cllr G McMonagle	23-24
W103Q3543	Update on wait times for Children to access CAMHS Services Donegal, including JIGSAW, the extent of the Out Of Hours Services for CAMHS in Donegal?	Cllr G McMonagle	24
W103Q3545	Re Biology -Serology Lab. UHLKY. As a follow on to answer of Nov 2021 ref. W96Q3097. Can I be informed of progress to date?	Cllr G Crawford	24
W103Q3546	Update on recent Ambulance management and support structure changes in CHO area 1, staff numbers involved.	Cllr G Crawford	25
W103Q3547	Possible to speed up triage for young children in the ED to see an appropriate Medical Professional and avoid long waits in adult environment in EDs.	Cllr G Crawford	25
W103Q3548	Carndonagh Community Hospital; Bed Registration, reopening & occupancy, HIQA visit date following completion of construction works, issues raised and responses, beds still awaiting registration in Jan 2023.	Cllr A Doherty	25
W103Q3549	Outline the enhancement of service provision following the current examination of NowDoc services model. Ensure sub-station delivery maintained?	Cllr A Doherty	25-26
W103Q3550	Update on improvements and investment in the NAS in Donegal area for last 3 years.	Cllr C Brogan	26-27
W103Q3551	Update on the Donegal Mental health services in the last 3 years, updated report on the crisis response continuing of services following the Creeslough tragedy?	Cllr C Brogan	27-28
W103Q3552	Update on the capital investment in all our HSE projects in Donegal and a timeframe for same?	Cllr C Brogan	28-32
W103Q3553	Support resources re the extension of the new ambulance protocol to Nenagh, any plans to increase bed capacity and staffing at these 3 Hospitals.	Cllr S Morris	32-33
W103Q3554	New NAS protocol Mid West; Without additional resources, beds and staff, how do they propose it will reduce dependence in the UHL ED?	Cllr S Morris	33-34
W103Q3555	Figure for the amount allocated in additional resources to Shannondoc in preparation for the Christmas/Winter surge and a break down by area of how this funding was utilised?	Cllr S Morris	34
W103Q3556	Mental Health out of hours/weekend services in North Tipperary.	Cllr S Morris	34-35
W103Q3557	Will HSE give assurances that the complement of management and staffing required for delivery of Day Services at Cashel na Cor and offering all service users what was available pre-covid is in situ again at Cashel na Cor?	Cllr A Doherty	35
W103Q3558	Staffing and occupancy of a new group home and Respite availability in Inishowen, Respite provision at Riverwalk House, additional respite provision, access and use of the Hydrotherapy Facility at Milltown House?	Cllr A Doherty	35-36
W103Q3559	Update on the progression of the proposed 50 Bed unit at the Sacred Heart Hospital Roscommon.	Cllr T Ward	36
W103Q3560	How many older people are on waiting list for home help hours in South Roscommon and in Co Roscommon?	Cllr T Ward	36-37

W103Q3561	How many dentists in Co Roscommon and the local catchment areas provide services to people under the medical card scheme?	Cllr T Ward	37
W103Q3562	List of all the services available at the Monksland Primary Care Centre Athlone, and also the Primary Care Centres in Co Roscommon.	Cllr T Ward	37-38
W103Q3563	Proposed development of a new Primary Care Centre at Seamus Quirke Road, Galway.	Cllr D Bree	38-39
W103Q3564	Cumulative bed days lost in SUH as a result of delayed discharge 2022, any plans to increase the number of step-down beds and step-down facilities in the hospital catchment area?	Cllr D Bree	39
W103Q3565	HSE monitoring of GP prescribing of anti-psychotic/anti-depressant medication to their patients attending CAMHS, in the absence of any consultant psychiatric follow up, over an extended period?	Cllr D Bree	39-41
W103Q3566	Has the HSE entered into agreements with private commercial companies to rent properties for use as Primary Care Centres in Athenry, Ballina, Buncrana, Ennis and Mountbellew; what companies and each lease cost?	Cllr D Bree	41
W103Q3567	Outline of service provision by the Mental Health Day Service at Brackernagh Health Centre Ballinasloe.	Cllr E Francis Parsons	42
W103Q3568	St Brigid's Hospital Campus; timeline of HSE vacating and property listing, portion being retained by HSE.	Cllr E Francis Parsons	42-43
W103Q3569	Outline any HSE plans for a Western Regional Rehabilitation Centre and current rehabilitation services/ stroke/ BI programmes in CHO2.	Cllr E Francis Parsons	43
W103Q3570	Figures for HSE budget surplus for earmarked but unfulfilled Carer /Personal Assistant hours 2022, number of unfulfilled hours, actions arising from surplus funds for carer/PA hours in 2023.	Cllr E Francis Parsons	43-44
W103Q3571	Update (HSE Estates and Saolta) on the provision of Additional Car Parking at SUH.	Cllr D Gilroy	44
W103Q3572	The Longest, Shortest and Average length of time that successful applicants/Candidates in Both Healthcare and Admin service are on a panel for appointment within the a. Saolta Hospital Group Hospitals before appointment b. CHO1 Area before Appointment	Cllr D Gilroy	44
W103Q3573	A report on what numbers Under 15 Years, 16-75 Years and Over 75 Years have attended the CareDoc Service in Sligo in the last 12 Month reporting period, how many of these were referred to A&E.	Cllr D Gilroy	45
W103Q3574	Saolta Hospital Group report on how many Attendees at A&E in each Hospital within the Group have left / self-discharged without being treated /against advice / without saying why, in the last 12 Month Reporting Period.	Cllr D Gilroy	45

Number:	QUESTION	RAISED BY
W103Q3518	Can the RHF please give a breakdown of the recent recruitment and retention numbers for 2022 in the NAS. How many new paramedics were the NAS hoping to recruit and did the service reach those targets. I would ask that as much data as possible be given in tabular form.	Cllr L Grant

Intake for Student Paramedics for 2022		
	Proposed	Actual
January	64	5
September	96	84
December	96	82

The NAS, through the HSE National Recruitment Service (NRS), continued to actively recruit new staff throughout 2022 and launched a rolling advertising campaign for Qualified Paramedics, Student Paramedics and Intermediate Care Operatives in March 2022.

The NAS also commenced classes of 15 Intermediate Care Operatives in October 2022 and a further 12 in November 2022 with an additional intake expected in the first half of this year. The NAS recruited Emergency Call Takers for the National Emergency Operations Centre sites in Tallaght and Ballyshannon, Co Donegal and are currently training Call Takers to refresh the existing numbers at the centres.

In total, the NAS had 209 new staff start in 2022 with the majority of those (181) being in Patient and Clinical Care (Emergency Medical Technicians, Intermediate Care Operatives and Ambulance Officers).

Since 2019, the NAS College has commenced training for 472 new recruits to the paramedic programme. To date 417 of these students/recruits remain in the NAS with 251 of these deployed to front-line duties. The remaining 166 will move from their supernumerary status, as part of the paramedic programme and will be deployed on front-line ambulances in December 2023/January 2024. In September 2023, the NAS College intend to recruit at least 128 paramedic students across four NASC sites and an additional intake of up to 32 registered paramedics in October is also planned.

To further support staff retention, the NAS has developed the HR People Plan 2022 – 2025. The overarching purpose of this plan is to enhance employee experience, optimise the NAS working environment and meet expectations of health policy in Ireland.

JJ McGowan, Chief Ambulance Officer - West

W103Q3519	<p>Can I be provided with the following data with regards to the operation of the ED in UHL in 2022;</p> <ul style="list-style-type: none"> • can I be provided with a geographic breakdown, by county based percentage, of the presentations to the ED in UHL? • What percentage of the presentations to the ED in UHL take place between 8pm and 8am Monday to Friday, and on Sat/Sun? • What percentage of those assessed in the ED in UHL could have been clinically assessed and treated in a MAU or LIU? 	Cllr C Murphy
------------------	---	----------------------

As requested, please see below data outlining the percentage of presentations to the Emergency Department at University Hospital Limerick which took place between 8pm and 8am between Monday - Friday and on Saturday and Sunday in 2022.

Total ED Attendances 2022	79,891
Total ED Attendances 8pm – 8am Monday to Friday	15,358 (19%)
Total ED Attendances 8pm – 8am Saturday/Sunday	6,517 (8%)

It is not possible to determine if a case assessed in the ED could have been treated in an MAU or Injury Unit as this information is not recorded in such a way that a report can be easily generated. This would require the manual review of each individual presentation, this is also the situation for the county based data requested.

The Injury Units at Ennis and Nenagh had their busiest years to date in 2022. During 2022, a total of 38,523 patients attended our Injury Units in Ennis, Nenagh and St John’s, representing a 30% increase on 2021.

The Injury Units are the most efficient treatment pathway for patients over the age of 5 years who suffer sprains, breaks and burns. The Injury Unit teams can also treat sports injuries, including hand and ankle injuries, and can remove foreign bodies from the eye, ear and nose. Staff also provide quick access to diagnostics and x-rays, make the necessary arrangements to refer patients to specialist care including at the Emergency Department in UHL when required, and arrange follow-up appointments within the Injury Unit where necessary.

Both Ennis and Nenagh Injury Units are open 8.00am to 8.00pm, 7 days a week. Governance is provided by a consultant in emergency medicine and the service is delivered by Emergency Care Physicians and GPs. Advanced Nurse Practitioners (ANP) also assess and treats patients and refer accordingly.

In addition, as you are aware, the Medical Assessment Unit (MAU) pathway for 112/999 patients was recently introduced in Ennis and Nenagh Hospitals. This initiative was successfully trialled in North Cork and Mallow General Hospital in 2022. It allows stable medical patients that meet the agreed clinical criteria to be treated in a Model 2 hospital. A key element is a telephone referral from the treating paramedic to the receiving MAU doctor, which ensures that the right patient is brought to the MAU.

This pathway will result in patients receiving medical treatment in a hospital closer to their home, will reduce patient presentations to Emergency Departments and will release ambulances more quickly to respond to other emergency calls.

112/999 patients that do not meet these clinical criteria will continue to be transported to Emergency Departments for assessment and treatment.

Our Medical Assessment Units in Ennis Hospital and Nenagh Hospitals treats patients referred by GPs, ShannonDoc and now NAS paramedics.

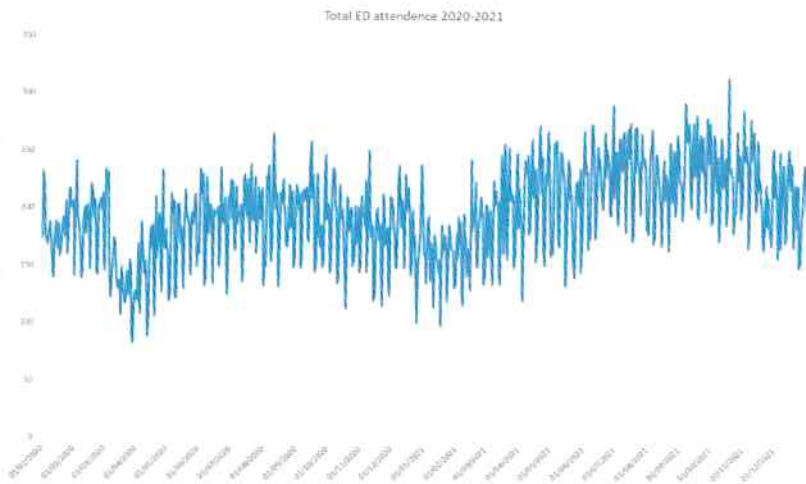
In Ennis Hospital, this pathway commenced on January 9th and in Nenagh Hospital on February 7th. It is envisaged that similar measures will be introduced at St John’s MAU in the coming weeks.

Medical Assessment Units at Ennis, Nenagh and St John’s saw 12,737 patients in 2022, a new high and an increase

of 19% on 2021.

The National Ambulance Service uses separate criteria to Hospital Groups when determining the priority of their call-outs. Therefore, it is not possible to distinguish if lower-priority calls could have been treated in an MAU or Injury Unit. The new ambulance 112/999 pathway for MAUs will ensure that patients that meet the agreed clinical criteria will be treated in a Model 2 hospital.

Please see below a 24 hour time chart showing the flow of patients through the ED in 2020 and 2021.



C. Cowan CEO UL Hospitals Group

W103Q3520	In 2022 I was provided with a breakdown of the numbers attending the ED through the NAS for the first 7 months of the year. Of the 4122 attendees, 45 were Echo priority, more than 1800 were Delta priority, leaving approx 2270 lower priority calls. Can I be provided with information from UHL as to how many of these lower priority calls could have been treated in either the MAU or LIU in Ennis.	Cllr C Murphy
------------------	---	----------------------

As requested, please see below data outlining the percentage of presentations to the Emergency Department at University Hospital Limerick which took place between 8pm and 8am between Monday - Friday and on Saturday and Sunday in 2022.

Total ED Attendances 2022	79,891
Total ED Attendances 8pm – 8am Monday to Friday	15,358 (19%)
Total ED Attendances 8pm – 8am Saturday/Sunday	6,517 (8%)

It is not possible to determine if a case assessed in the ED could have been treated in an MAU or Injury Unit as this information is not recorded in such a way that a report can be easily generated. This would require the manual review of each individual presentation, this is also the situation for the county based data requested.

The Injury Units at Ennis and Nenagh had their busiest years to date in 2022. During 2022, a total of 38,523 patients attended our Injury Units in Ennis, Nenagh and St John's, representing a 30% increase on 2021.

The Injury Units are the most efficient treatment pathway for patients over the age of 5 years who suffer sprains, breaks and burns. The Injury Unit teams can also treat sports injuries, including hand and ankle injuries, and can remove foreign bodies from the eye, ear and nose. Staff also provide quick access to diagnostics and x-rays, make the necessary arrangements to refer patients to specialist care including at the Emergency Department in UHL when required, and arrange follow-up appointments within the Injury Unit where necessary.

Both Ennis and Nenagh Injury Units are open 8.00am to 8.00pm, 7 days a week. Governance is provided by a consultant in emergency medicine and the service is delivered by Emergency Care Physicians and GPs. Advanced Nurse Practitioners (ANP) also assess and treats patients and refer accordingly.

In addition, as you are aware, the Medical Assessment Unit (MAU) pathway for 112/999 patients was recently introduced in Ennis and Nenagh Hospitals. This initiative was successfully trialled in North Cork and Mallow General Hospital in 2022. It allows stable medical patients that meet the agreed clinical criteria to be treated in a Model 2 hospital. A key element is a telephone referral from the treating paramedic to the receiving MAU doctor, which ensures that the right patient is brought to the MAU.

This pathway will result in patients receiving medical treatment in a hospital closer to their home, will reduce patient presentations to Emergency Departments and will release ambulances more quickly to respond to other emergency calls.

112/999 patients that do not meet these clinical criteria will continue to be transported to Emergency Departments for assessment and treatment.

Our Medical Assessment Units in Ennis Hospital and Nenagh Hospitals treats patients referred by GPs, ShannonDoc and now NAS paramedics.

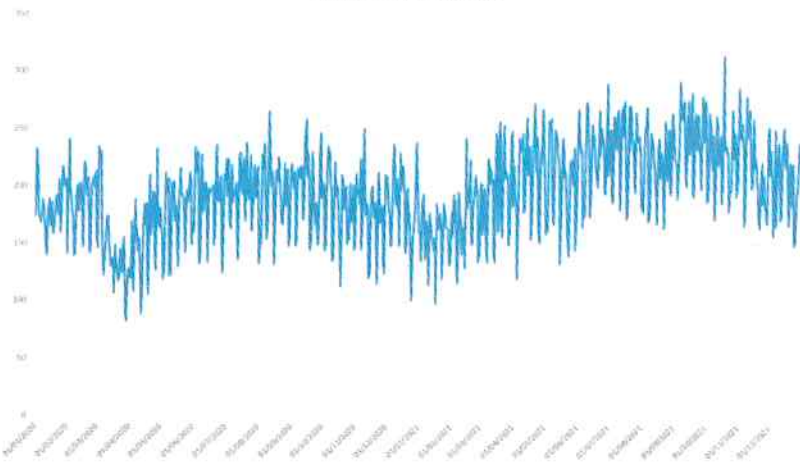
In Ennis Hospital, this pathway commenced on January 9th and in Nenagh Hospital on February 7th. It is envisaged that similar measures will be introduced at St John's MAU in the coming weeks.

Medical Assessment Units at Ennis, Nenagh and St John's saw 12,737 patients in 2022, a new high and an increase of 19% on 2021.

The National Ambulance Service uses separate criteria to Hospital Groups when determining the priority of their call-outs. Therefore, it is not possible to distinguish if lower-priority calls could have been treated in an MAU or Injury Unit. The new ambulance 112/999 pathway for MAUs will ensure that patients that meet the agreed clinical criteria will be treated in a Model 2 hospital.

Please see below a 24 hour time chart showing the flow of patients through the ED in 2020 and 2021.

Total ED attendance 2020-2021



C. Cowan CEO UL Hospitals Group

W103Q3521	Can I be provided with a 24 hour time chart showing the flow of patients by county through the ED in UHL for 2020 & 2021.	Cllr C Murphy
------------------	---	----------------------

As requested, please see below data outlining the percentage of presentations to the Emergency Department at University Hospital Limerick which took place between 8pm and 8am between Monday - Friday and on Saturday and Sunday in 2022.

Total ED Attendances 2022	79,891
Total ED Attendances 8pm – 8am Monday to Friday	15,358 (19%)
Total ED Attendances 8pm – 8am Saturday/Sunday	6,517 (8%)

It is not possible to determine if a case assessed in the ED could have been treated in an MAU or Injury Unit as this information is not recorded in such a way that a report can be easily generated. This would require the manual review of each individual presentation, this is also the situation for the county based data requested.

The Injury Units at Ennis and Nenagh had their busiest years to date in 2022. During 2022, a total of 38,523 patients attended our Injury Units in Ennis, Nenagh and St John’s, representing a 30% increase on 2021.

The Injury Units are the most efficient treatment pathway for patients over the age of 5 years who suffer sprains, breaks and burns. The Injury Unit teams can also treat sports injuries, including hand and ankle injuries, and can remove foreign bodies from the eye, ear and nose. Staff also provide quick access to diagnostics and x-rays, make the necessary arrangements to refer patients to specialist care including at the Emergency Department in UHL when required, and arrange follow-up appointments within the Injury Unit where necessary.

Both Ennis and Nenagh Injury Units are open 8.00am to 8.00pm, 7 days a week. Governance is provided by a

consultant in emergency medicine and the service is delivered by Emergency Care Physicians and GPs. Advanced Nurse Practitioners (ANP) also assess and treats patients and refer accordingly.

In addition, as you are aware, the Medical Assessment Unit (MAU) pathway for 112/999 patients was recently introduced in Ennis and Nenagh Hospitals. This initiative was successfully trialled in North Cork and Mallow General Hospital in 2022. It allows stable medical patients that meet the agreed clinical criteria to be treated in a Model 2 hospital. A key element is a telephone referral from the treating paramedic to the receiving MAU doctor, which ensures that the right patient is brought to the MAU.

This pathway will result in patients receiving medical treatment in a hospital closer to their home, will reduce patient presentations to Emergency Departments and will release ambulances more quickly to respond to other emergency calls.

112/999 patients that do not meet these clinical criteria will continue to be transported to Emergency Departments for assessment and treatment.

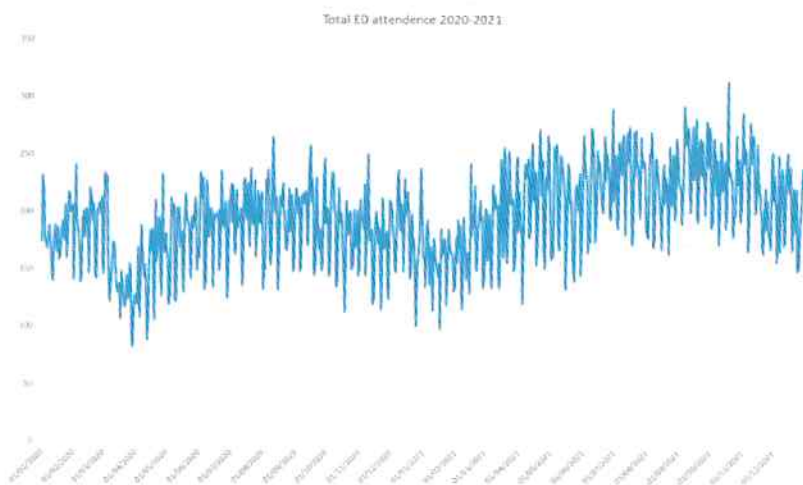
Our Medical Assessment Units in Ennis Hospital and Nenagh Hospitals treats patients referred by GPs, ShannonDoc and now NAS paramedics.

In Ennis Hospital, this pathway commenced on January 9th and in Nenagh Hospital on February 7th. It is envisaged that similar measures will be introduced at St John’s MAU in the coming weeks.

Medical Assessment Units at Ennis, Nenagh and St John’s saw 12,737 patients in 2022, a new high and an increase of 19% on 2021.

The National Ambulance Service uses separate criteria to Hospital Groups when determining the priority of their call-outs. Therefore, it is not possible to distinguish if lower-priority calls could have been treated in an MAU or Injury Unit. The new ambulance 112/999 pathway for MAUs will ensure that patients that meet the agreed clinical criteria will be treated in a Model 2 hospital.

Please see below a 24 hour time chart showing the flow of patients through the ED in 2020 and 2021.



C. Cowan CEO UL Hospitals Group

W103Q3522	Can I be provided with a) details of the NAS policy with regards to ensuring adequate ambulance human resources are in place at Kilrush to cover West Clare in the case of short staffing for personal reasons, b) in the case where only one crew member is available for duty, is it operational policy	Cllr C Murphy
------------------	---	----------------------

	to pull that staff member in to Ennis rather than fill the vacancy in Kiltrush and c) the number of times this has occurred in Kiltrush in the past 12 months.	
	<p>a) Operationally, all efforts are made to cover a roster at station level by the Paramedic Supervisor: non-rostered staff are utilised in the first instance for short-notice absence cover; if this is unavailable, a request goes out for off-duty staff. Tactical redeployment is then considered if no off-duty staff are on hand.</p> <p>b) All decisions for tactical redeployment are made by the NEOC on a case-by-case basis, as they will have an overall view of the status of resources at any one time, nationally.</p> <p>c) NAS were unable to fill short-term absences in Kiltrush station 21 times during 2022. In these situations (as noted above) NEOC considered and/or used tactical redeployment methods to cover the shortfall.</p>	
JJ McGowan, Chief Ambulance Officer - West		
W103Q3523	Can the HSE confirm if an additional ambulance and staff is going to be located in The Tuam Ambulance Base and also what is the current number of units operating out of Tuam.	Cllr D Killilea
<p>The HSE National Ambulance Service West area is currently reviewing Tuam station in terms of capacity versus demand. Tuam currently has a day and night crew Monday through Sunday. The review will examine the need for additional crews to enhance this level of service.</p>		
JJ McGowan, Chief Ambulance Officer - West		
W103Q3524	Can the HSE confirm of what plans there are for the lands at Toghermore, Tuam and if they would be will to meet any sports organisations with a view to having a sports campus on site?	Cllr D Killilea
<p>There is no decision yet made regarding the future long term use of Toghermore House and lands. There are a number of significant capital developments currently underway in the Tuam area to enable enhanced delivery of healthcare services. Existing facilities such as at Toghermore will be the subject of engagement between HSE Capital & Estates and Community Healthcare West to consider overall healthcare service needs in the first instance prior to consideration of any other options such as disposal of any property or lands. Any potential for a sports campus on the site would likely be in the context of disposal of assets by HSE. The HSE from a health & wellbeing perspective is very supportive of sporting activities and has recently given approval to Parkrun Ireland to hold weekly 5k runs on the Toghermore grounds.</p>		
Joe Hoare, Assistant National Director, Capital & Estates		
W103Q3525	Can the HSE confirm the completion dates and "on budget" for developments known as "The Grove Hospital" and "Community Nursing Unit" in Tuam, what staff will be based there and what new staff are being recruited for both.	Cllr D Killilea
<p>The position is similar to that outlined previously in response to W101Q3405 last September 2022. Both of these capital projects are progressing well and in line with anticipated cost projections. It is expected to have substantial completion by the end of March 2023 or shortly thereafter. Final project costs will also include payment to deal with material inflation in line with recent government policy. Both developments are to accommodate existing services and so the staffing is largely already in place. Community Healthcare West will be reviewing and progressing their plans to put these new facilities into use over the coming months and will be in a position to advise on the staffing details.</p>		
Joe Hoare, Assistant National Director Capital & Estates		
<p>The current base for the Community Mental Health Team and Day Hospital in Tuam is at the Toghermore Campus on the outskirts of Tuam. The new location for these services will be in the Grove facility in the centre of Tuam and will allow for easier access for both the people of Tuam and the wider catchment area, through local transport systems going directly to the centre of the town. This new Community Mental Health Team Headquarters will be</p>		

the community base for the General Adult Community Mental Health Team comprising of:

Consultant Psychiatrist
 Senior Registrar and NCHD
 Clinical Psychologist
 Occupational Therapist
 Social Worker
 Peer Support Worker
 Multi Task Attendants
 Nursing Staff
 Mental Health Association Support Staff
 Clerical Administration Staff

The services that will be provided from the new Community Mental Health Hub will include; Out Patient Clinics Therapeutic Programmes, Specialist Counselling Services, e.g. Family Therapy, Cognitive Behavioural Therapy, Psychological Therapy, Addiction Counselling along with 1:1 supportive counselling from staff.

Some of the groups which will be facilitated will include; WRAP (Wellness Recovery Action Planning), Solutions for Wellness, Distress Tolerance/Emotional regulation, Anxiety Management, Mindfulness, Education on Medication/Mental Wellbeing as well as 1:1 occupational assessments.

There will be no additional staffing requirements needed to support this transition.

Staffing for Aras Mhuire Community Nursing Unit, Tuam is as follows:

Titles	Current Staff	Additional Staff	Total Staff to be allocated
Clinical Nurse Managers	1 DON & 1 CNM1	3	5
Nurses	10	9	19
Health Care Assistants	8.6	21.5	30.1
MTA's	3.5	7.5	11
Clerical staff	1.5	1	2.5
Chef	1	1.5	2.5

The Children's Disability Network Team (CDNT) 7 is a recently reconfigured disability service for children and young people with complex needs. Children's services locally have reconfigured in line with the national policy of Progressive Disability Services. This has led to services coming together under a Lead Agency model to deliver services under the policies and principles of Progressive Disability Services. In practice, this means services are now provided under a 0 to 18 age model, based on their level of need rather than diagnosis. Input is delivered in line with Family Centred Practice under Individual Family Service Plans. The service supports the North Galway and East Central Galway area for children and young people with disabilities and complex needs. The areas CDNT 7 covers include Milltown, Tuam, Abbeyknockmoy, Athenry, Craughwell and Loughrea and surrounding areas, which has an overall caseload of 660 children and young people.

Currently, the CDNT is located in two separate buildings. This includes Gilligan House in the N17 Business Park and Toghermore House on the Toghermore Campus. This split location presents challenges in progressing a 0-18 service, as currently, the service has to split to logistically provide a service, with the younger children's group being supported from Gilligan house and the older children's group supported from Toghermore House. Additional challenges stemming from a split location included having clinical files in two separate locations, no set meeting space and additional communication challenges by having a team in two bases.

The new location of the Grove will remove the aforementioned and other challenges, alongside permitting easier access for both the people of Tuam and the wider catchment area through local transport systems going directly to

the town centre. The Disability section of the Grove will include a mixture of clinic space mainly on the ground floor and staff working space upstairs. The clinic space will incorporate larger areas for children and young people with more complex needs, alongside dedicated changing spaces, overhead hoisting and easier accessibility than current buildings. Sufficient file storage and equipment storage will also be of greater benefit to the service.

Staff utilising the space will include:

- Consultant Paediatrician x 1
- Clinical Psychologists x 5
- Occupational Therapist x 6
- Speech and Language therapist x 7
- Social Worker x 2
- Physiotherapist x 4
- Nursing Staff x 2
- Children's Disability Network Manager x 1
- Clerical Administration Staff x 3
- Behavioural Therapist x 1

Service provided by CDNT 7 will be varied between clinical services from the Grove and in home/school support for the child or young person, depending on the needs of the child or their family. Input can be through 1:1 service or group based interventions.

Examples of 1:1 clinical assessments which will be provided include sensory assessment, cognitive assessment, communication assessment, social work assessment, mobility or postural assessment, ASD or Intellectual disability assessment, paediatric review, etc.

Examples of Group based intervention which will be provided include anxiety management, toilet training, sleep hygiene, communication based interventions, ASD based support and interventions, etc.

Breda Crehan-Roche, Chief Officer, Community Healthcare West

W103Q3526	When are we going to look at increasing bed capacity at all hospitals thru the HSE system to take pressure of A&E. Have we learned nothing from Covid and flu season.	Cllr F Gurn
------------------	---	--------------------

The Saolta Group has completed a Demand and Capacity Analysis for our Model 3 hospitals, to identify the future inpatient and daycase bed capacity requirements up to 2030.

This has identified increased requirements for inpatient (including ICU beds) and daycase beds for all of our Model 3 hospitals; Letterkenny, Mayo, Sligo and Portlincula University Hospitals.

The below table gives an overview of total 2019 and future required beds per hospital.

Hospital	Type of bed	# 2019 beds	# forecasted 2030 beds (excl. COVID capacity)	# forecasted 2030 beds including COVID capacity)
Letterkenny University Hospital	IPC	322	368	385
Letterkenny University Hospital	Rehab	19	29	29
Letterkenny University Hospital	ICU	5	10	14
Letterkenny University Hospital	NICU	8	8	8
Letterkenny University Hospital	DC	38	47	47
Mayo University Hospital	IPC	248	331	347
Mayo University Hospital	ICU	8	10	13
Mayo University Hospital	DC	57	40	40
Portiuncula University Hospital	IPC	158	179	193
Portiuncula University Hospital	ICU/HDU/CCU	15	8	11
Portiuncula University Hospital	DC	23	16	16
Sligo University Hospital	IPC	273	336	353
Sligo University Hospital	ICU	5	13	17
Sligo University Hospital	NICU	10	10	10
Sligo University Hospital	DC	66	51	51

*Extract from Saolta University Health Care Group Demand and Capacity Analysis Model 3 Hospitals

This would result in an overall increase of the following amount:

Site	Beds 2019	2030 predicted need	Increase
LUH	392	483	91
MUH	313	400	87
PUH	196	220	24
SUH	354	431	77

Saolta continues to progress additional capacity across the group including an additional 42 bed block development in SUH, plans to utilise a 26 bedded unit at St John's Unit, 38 beds coming on stream in LUH in the past two years and plans for a 50 bedded ward block in PUH. The Group is also advancing plans for additional capacity for Galway and Mayo.

In GUH, further work has been undertaken as part of the needs analysis, which has set out a requirement to develop further inpatient beds. This includes a requirement for a 222 inpatient bed for GUH.

T. Canavan, CEO, Saolta University Health Care Group

W103Q3527	Having seen how after service works in Spain can we not adopt similar system here where everyone was looking to have Primary care centres rolled out that they take pressure of A&E and that you can go there and see Doctor/Nurse for 24/7 care and be in and out now wait around for 24 to 48 hrs in our A&E.	Cllr F Gurn
------------------	---	--------------------

The Sláintecare Report defines "Healthcare delivered at the lowest appropriate level of complexity through a health service that is well organised and managed to enable comprehensive care pathways that patients can easily access and service providers can easily deliver. This is a service in which communication and information support positive decision-making, governance and accountability; where patients' needs come first in driving safety, quality and the coordination of care"

Response – Co. Donegal

In Donegal a number of new purpose built Primary Care Services have become operational at Donegal town,

Buncrana and Newtoncunningham. Additional facilities have been approved at Dunfanaghy, Dungloe and Killybegs. As part of the Enhanced Community Care Programme Nursing led Community Intervention Teams have been established in each Network area which operate from two of the above locations at Donegal Town & Buncrana in addition to the The Errigal Chronic Disease Hub in Letterkenny, operating from 8am to 8pm seven days per week, 365 days a year. The Donegal Community Intervention Team (CIT) is a new nurse-led service delivering care for patients aged 16 and over in the community.

The service aims to provide enhanced acute interventions in a rapid and integrated manner to patients with acute episodes of illness who are appropriate for care in their home/community setting or at one of the CIT clinics, thus avoiding hospital admission/attendance and allowing for early discharge. This involves the CIT working closely with GPs and Letterkenny University Hospital (LUH), including the Emergency Department (ED).

The Community Intervention Team accept referrals from the ED at LUH for cases that meet CIT criteria. This will prevent the patients having to return to the ED for review or treatment. The NowDoc service is also able to refer to the CIT if the patients' needs meet CIT criteria.

Community Diagnostics

Community diagnostic services are being expanded into the community having recently opened a new purpose built x-ray facility at the Errigal CDM Hub. Work will continue to develop diagnostics to reduce footfall in the acute sector.

Chronic Disease Management Hubs

Nurses in the Chronic Disease Management Hubs continue to provide alternative care pathways for patients in the community to empower them to self-manage and when required, to link them into the right service, at the right time, and in the right place, to enable them to access the required specialist care without needing to attend the ED.

An Integrated Working Group comprising of membership from Letterkenny University Hospital, Donegal Primary Care Services and GPs is operational to identify service developments and improve pathway of care for the patient.

Response Sligo Leitrim

In Sligo a number of new purpose built Primary Care centres have been completed in the last two years including in Carrick on Shannon, Grange and Drumcliff. Further development of Nazareth House Community Services building has also progressed and additional facilities have been approved in Tubbercurry

Additional staff recruited as part of the Enhanced community care programmes will support service delivery across these new units as well at our pre-existing Primary Care locations.

Community Diagnostics

Community diagnostic services are being expanded into the community and work will continue to develop diagnostics to reduce footfall in the acute sector. Respiratory Diagnostics is now being delivered in the Chronic Disease management hub on Clarion Road following the recruitment of two respiratory physiologists and cardiac diagnostics will also be extended within community settings with additional cardiac physiologist also in post.

Chronic Disease Management Hubs

The teams (Cardiac/ Respiratory and Diabetes) within the Chronic Disease Management Hubs are developing and delivering alternative care pathways for patients in the community to empower them to self-manage and, when

required, to link them into the right service, at the right time, and in the right place to enable them to access the required specialist care without needing to attend the ED.

An Integrated Working Group comprising of membership from Sligo University Hospital, Primary Care Services and GPs is operational and meets regularly in order to identify service developments and improve pathway of care for the patient. A Clinical Workshop to discuss case management/ integrated care and clinical case reviews was recently held in SUH with attendance from SUH Consultants/ GPs and Primary Care

The HSE continues to work closely with GP services within the region and many GPs provided extended hours in evenings and weekends as part of Winter plan initiative in January. Extra doctors were also rostered by Out of Hours Service/ Caredoc over the winter months which improved access for the population. Both these initiatives were a contributory factor to reduced ED attendances

Dermot Monaghan, Chief Officer, Community Healthcare Organisation, (Cavan, Donegal, Leitrim, Monaghan, Sligo)

W103Q3528	With technology improving can we not look to have our medical information on a data base and have our own unique password that Doctors throughout our medical system can look at our medical records and treat us in any primary care centre or is it about monopolies that we cannot move between doctors in our medical system when we need 24/7 or is it going to be excuse that it is not possible. It is possible in tourism locations to see other doctors when you are feeling well.	Cllr F Gurn
------------------	---	--------------------

A lot of medical information is already available in computer systems, such as laboratory and radiology results. In the Saolta area we are providing access to these systems to clinical staff working in hospitals and to some who work in community settings. This will be expanded further to additional clinical staff over the course of this year and next, such as primary care centres and Enhanced Community Care services. We are ensuring compliance with data protection legislation as we expand access.

The HSE recognises that a complete Electronic Health Record (EHR) is needed in all care settings. At this time approval is in place for an EHR in Children’s Health Ireland. An EHR was included in HSE eHealth Strategy from 2015, and is expected to be a major theme in the renewed HSE eHealth Strategy currently being developed. The HSE continues to work with all the stakeholders to progress and continue the necessary investment and staff required to implement a full EHR across all health services, including Saolta. Once investment and staff are approved implementation across the Saolta Group will take between 3 and 5 years.

Vincent Jordan, eHealth Director, Saolta University Health Care Group

W103Q3529	Is there a plan in place for increased capacity at SUH where we have seen large numbers of Ukraine refugees moving to the North West on neighbouring counties of Donegal/Leitrim who will be looking to avail of different Medical procedures and counselling services having coming from war torn conflict in Ukraine.	Cllr F Gurn
------------------	---	--------------------

The hospital has a number of capital project plans to develop bed capacity for the overall population needs we serve. These include:
Development of 42 bed block which is expected to commence construction in 2023 and complete in 2025. Work has commenced on a SAR for a larger Surgical/Theatre/ED block.

The 26 bedded unit in St John’s is also going to be progressed in the coming years to provide additional capacity.

Other projects are at varying stages of capital development which include:

- 2nd CT
- Renal Dialysis Unit Expansion
- CSSD Upgrade

- Ophthalmic Injection Suite and Theatre.

Projects awaiting National Capital approval include:

- Cardiology CT Scanning Suite
- New Renal Dialysis Unit
- Expansion of Day Oncology / Day Services
- ICT infrastructure upgrade
- Expansion Microbiology Lab

T. Canavan, CEO, Saolta University Health Care Group

To date, no additional Psychology resources for the specific needs of Ukrainian refugees in Community Healthcare Cavan, Donegal, Leitrim, Monaghan and Sligo have been allocated. Hence, there is currently no specific plan to address the psychological needs of this group.

However, Primary Care Psychology Services in Sligo/ Leitrim /West Cavan/ South Donegal, are prioritising responses to Psychology referrals from Ukrainian refugees, which stem from the trauma experienced secondary to the war.

Dermot Monaghan, Chief Officer, Community Healthcare Organisation, (Cavan, Donegal, Leitrim, Monaghan, Sligo)

W103Q3530	How many hours per week does the Primary Care Centre in Castlebar provide a service to the public. When is it proposed to increase the number of hours? When is it proposed to operate on a 24 hour per day basis? What improvement if any has the opening of the Primary Care Centre in Castlebar had on the waiting lists at Mayo University Hospital and what reductions in waiting lists have resulted?	Cllr M Kilcoyne
------------------	---	------------------------

The Primary Care Centre in Castlebar provide services between 8:30am to 5:30pm, daily Monday to Friday. There are no plans currently to extend these opening hours. Services are not acute and do not operate on 24 hour basis.

Breda Crehan-Roche, Chief Officer, Community Healthcare West

The improvements that have happened for Mayo University Hospital following the opening of the Primary Care Centre in Castlebar has resulted in a reduction in the wait list for plain radiology to a maximum one week wait for Out Patient x-ray. There is also a reduction in ultrasounds, we are running a mammography service in the Primary Care Centre which has resulted in a reduction in the wait times for mammograms for Mayo patients. It has also facilitated more Mayo patients having follow up scans locally and not having to travel to UHG.

There is the day hospital for Older Person Services that is currently running 2 days a week for ICPOP, awaiting the increase in resources which has resulted in a quality improvement for frail elderly patients.

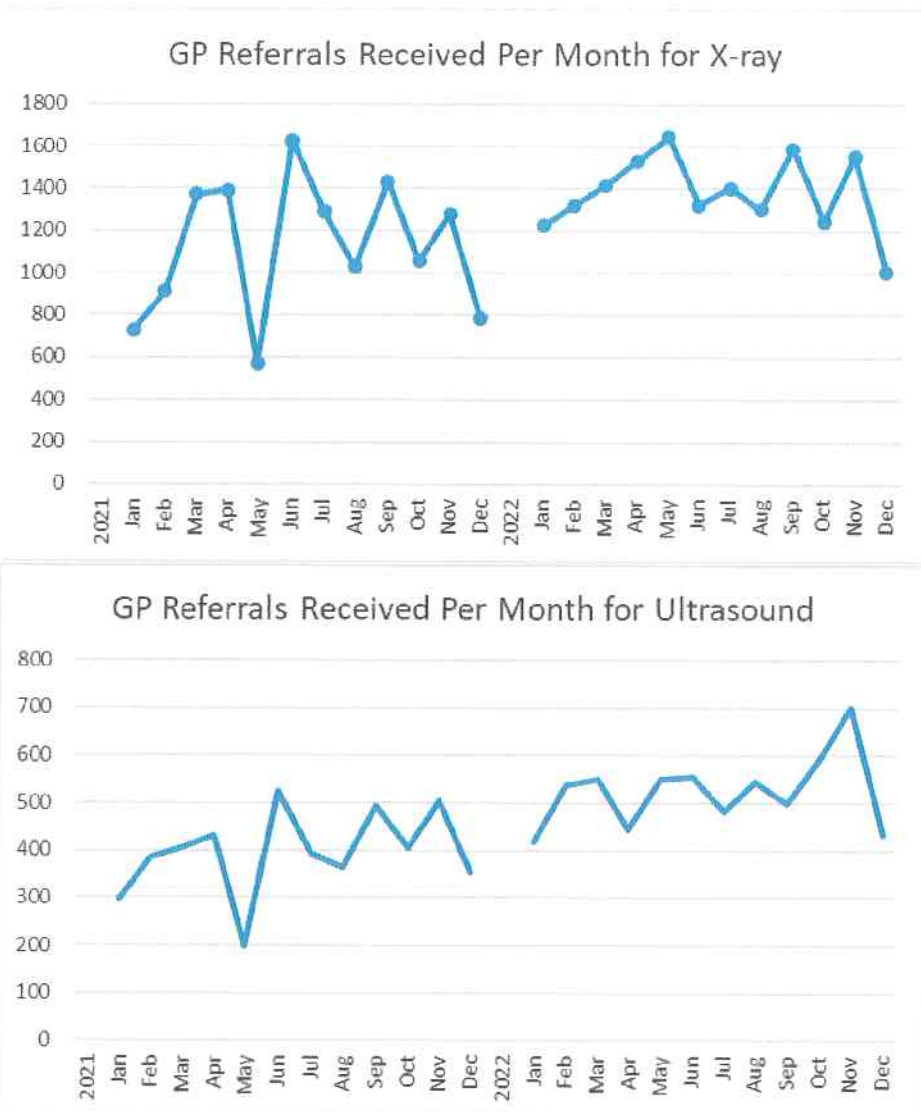
All the services provided in the Primary Care Centre help support keeping people at home.

Ultrasound & X-ray in Castlebar Primary Care Centre

Currently the X-ray and ultrasound service in Castlebar Primary Care are staffed with one radiographer & one radiographer assistant each, they are open 9am-5pm Monday to Friday.

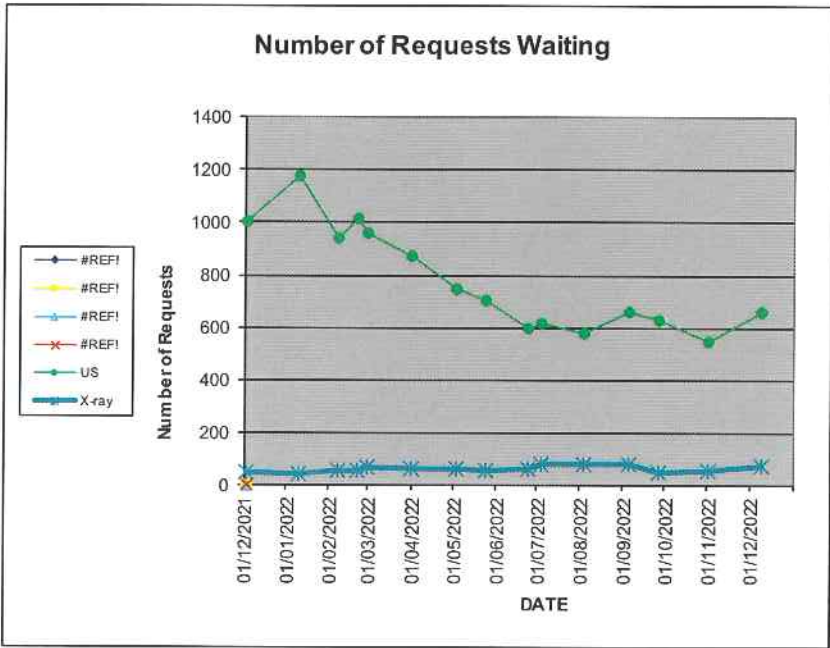
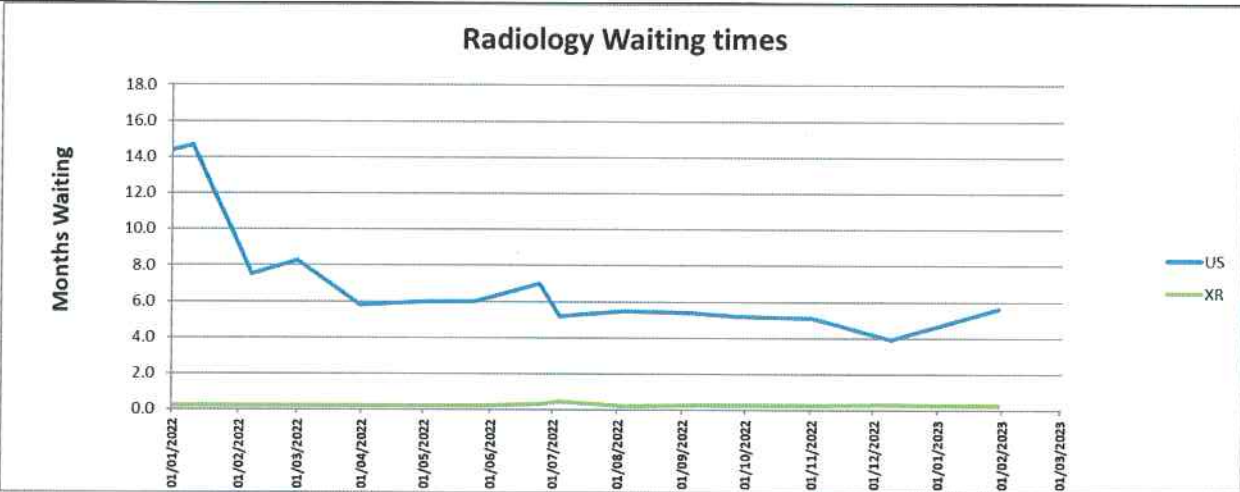
Both services are integrated with the main radiology department in MUH and the additional capacity has resulted in improvements to the overall waiting lists for both modalities. The relatively recent addition of similar integrated ultrasound services to Claremorris and Ballina PCCs has also helped. In short these services work very well but

demand is ever increasing.



The demand for ultrasound from GPs has grown significantly, but despite this access remains improved by the provision of the community based services. Activity levels have increased to all times highs in recent months as Covid-19 related disruption has abated.

There are plans in place for a second ultrasound machine/service in Castlebar Primary Care Centre (pending extension of the building) to further improve access in the Castlebar area.



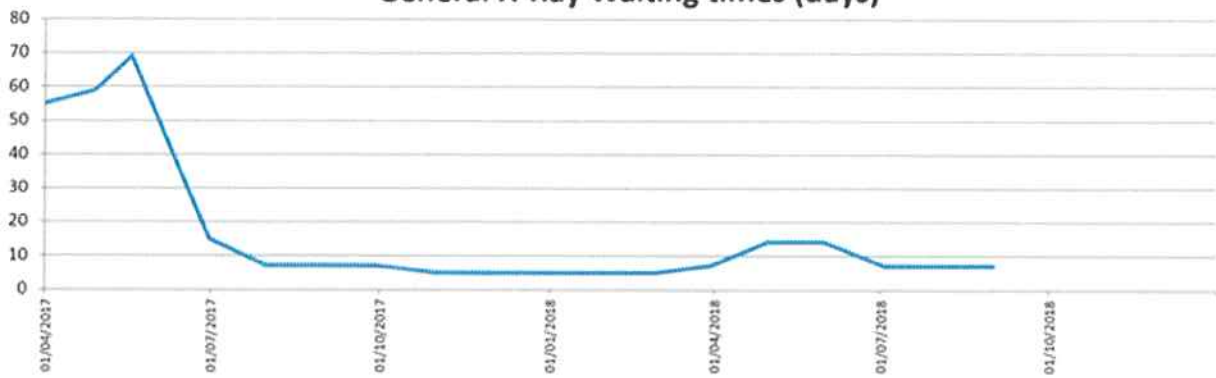
Unscheduled Vetted Requests		
	US	X-ray
02/12/2021	1000	48
10/01/2022	1176	43
07/02/2022	939	52
21/02/2022	1015	52
01/03/2022	962	70
31/03/2022	874	59
03/05/2022	745	62
24/05/2022	701	57
24/06/2022	600	59
04/07/2022	618	78
04/08/2022	581	82
05/09/2022	657	78
26/09/2022	629	50
01/11/2022	547	52
09/12/2022	658	74
03/01/2023	732	-

Number of Ultrasound and GPs referrals awaiting appointment

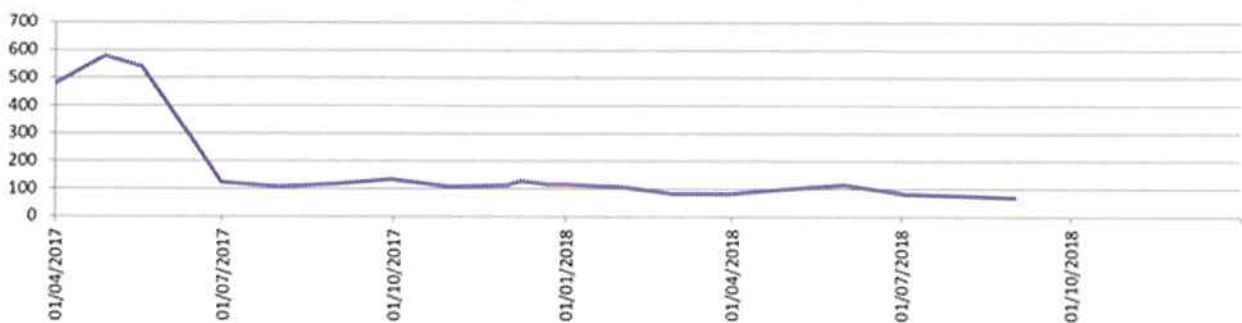
In 2017 The demand for our existing general radiography (“x-ray”) service for GP referred patients in Mayo University Hospital was such that waiting times were approximately eight weeks for an appointment in the main (hub) radiology department in MUH. The existing service in the main MUH radiology department was working at capacity and the infrastructural changes required to accommodate additional relevant capacity would result in significant disruption to the working of the department.

The initial introduction of x-ray service in Castlebar in 2017 resulted in an immediate and sustained improvement in access to X-rays services for GPs.

General X-Ray Waiting times (days)



General X-Rays - Total Number of Requests



T. Canavan, CEO, Saolta University Health Care Group

W103Q3531

How many patients have spent time on trolleys/ chairs in Mayo University Hospital in the period from 1st November 2022 to 31st January 2023?
What was the longest period of time any patient spent on a trolley or a chair in the ED before they were allocated a bed?

Cllr M Kilcoyne

Total number of patients on trolleys in MUH – Source of data SDU report

Month	Total
November 2022	586
December 2022	543
January 2023	495

Total= 1624 (all patients returned on trolley in ED and ward trolleys awaiting inpatient beds)

Over the three month period, the maximum wait time on a trolley in ED was 5 days. This occurred only once over this period. The majority of patients were seen within one day or less.

T. Canavan, CEO, Saolta University Health Care Group

W103Q3532

How many GP's / GP Practices in Mayo operate the Medical card scheme?
How many patients has each GP/ GP Practice currently?

Cllr M Kilcoyne

The number of GP contractors within each area and panel sizes for GPs within each area are available on the PCRS website. Please see links below:

<https://scanner.topsec.com/?d=2104&r=show&u=https%3A%2F%2Fwww.hse.ie%2Feng%2Fstaff%2Fpcrs%2Fpcrs-publications%2F&t=d99fe830534027959e60a3074a1c1cc31a1eacb2>

<https://scanner.topsec.com/?d=2104&r=show&u=https%3A%2F%2Fwww.sspcrs.ie%2Fportal%2Fannual-reporting&t=35cf49ec8c799cc7e4968d6ae66f5a910557d2ee>

National Medical Card Unit

W103Q3533	At the 31 st January 2023 how many people were waiting to see a consultant at Mayo University Hospital? How many have had a first consultation and are awaiting a procedure to be carried out?	Cllr M Kilcoyne
------------------	---	------------------------

The below data is from 26th January from the NTPF Waiting List extract which run once a week.

Waiting List	Patients Waiting
Outpatient WL	10027
Day Case & Inpatient WL	1365

All of the patients captured on the Out Patient Wait List are waiting for a first consultation. Some of the patients on the Day Case & Inpatient Wait List have had a first consultation and are now waiting procedures /surgery's.

Below is a more detailed breakdown on the waiting lists.

*** Data source NTPF Inpatient and Day Case waiting list extract the 26/01/2023**

- Mayo University Hospital have a total of 1,365 patients waiting on their inpatient and day case waiting lists for surgical procedures.
- In 2022 MUH removed a total of 1,322 patients waiting greater than 12 months from IPDC waiting lists. This was achieved through core activity, administrative validation, additional insourcing sessions and outsourcing via NTPF.
- In 2022 MUH carried out 23,953 day case procedures, 1,501 inpatients procedures and 2,575 GI scope procedures.

Inpatient and Day Case Waiting List	0-3 Mths	3-6 Mths	6-9 Mths	9-12 Mths	12-15 Mths	15-18 Mths	18-24 Mths	24-36 Mths	36-48 Mths	48+ Mths	Grand Total
Count of MRN	723	288	119	74	43	19	10	37	32	20	1365

*** Data source NTPF Outpatient waiting list extract the 26/01/2023**

- Mayo University Hospital have a total of 10027 patients waiting on their outpatient waiting lists. Of those 1702 have appointment dates.
- In 2022 MUH removed a total of 6129 patients waiting greater than 18 months from OPD waiting lists. This was achieved through Acute Clinical Prioritisation (ACP), core activity, administrative validation, additional insourcing sessions and outsourcing via NTPF.
- MUH have the best new to review ratios of all other model 3 hospitals at 1 is 1.8 exceeding the National Service Plan target of 2.5. In 2022 they had 48,585 OPD attendances.

Outpatient Waiting List	0-3 Months	3-6 Months	6-9 Months	9-12 Months	12-15 Months	15-18 Months	18-24 Months	24-36 Months	36-48 Months	48+ Months	Grand Total
Has Appointment Date	690	334	143	124	34	43	117	117	68	32	1702
No Appointment	2335	1598	1182	763	378	375	493	648	260	293	8325

Date											
Grand Total	3025	1932	1325	887	412	418	610	765	328	325	10027

T. Canavan, CEO, Saolta University Health Care Group

W103Q3534	Could the HSE provide the details of services used at the Galway Racecourse site, what are the numbers using the facility month on month over the last 12 months and what is the cost of rental and operating costs at the site? Can this service be provided at the Galway Airport site?	Cllr D Killilea
------------------	---	------------------------

The services provided at the Galway Racecourse site include vaccinations for Covid-19, Flu and Monkeypox. The figures from Jan to Dec 2022 are as follows:

Vaccinations for 2022 (Racecourse)

Month	Total
Jan-22	15,055
Feb-22	6521
Mar-22	2851
Apr-22	3511
May-22	2959
Jun-22	2020
Jul-22	1629
Aug-22	1913
Sep-22	1793
Oct-22	1794
Nov-22	2352
Dec-22	2044
Total	44,442

The cost of the Licence Fee and rental of equipment for service provision at Galway Racecourse for 2022 was €484,289.53.

Operational management of the Vaccination Service transferred from Saolta Hospital Group to Community Healthcare West (CHW) in May 2022. Operational costs for CHW for the period May-Dec 2022 were €323,168.22.

Regarding use of the Galway Airport site, this site is not suitable for our Covid-19 vaccination programme due to its layout, nature of finish (both walls and floors) and the need for rebuilds of hangar doors and refrigerated rooms.

In the short to medium term our understanding is that Galway City and County Council are dealing with the future use of Galway airport.

Breda Crehan-Roche, Chief Officer, Community Healthcare West

The Saolta University Health Care Group incurred an Operational Cost of €595,706 in relation to the Vaccination Centre at Galway Racecourse up to the end of July 2022.

T. Canavan, CEO, Saolta University Health Care Group

W103Q3535	Can I get an update in relation to the Primary Care Centre for An Spideail and why there are such significant delays in progressing/commencing	Cllr D Ó Cualáin
------------------	--	-------------------------

	same? When will the matter be finalised?	
<p>The HSE remains fully committed to the development of a new Primary Care Centre for An Spidéal. In terms of context, the overall pace of developing intended new projects has had to be managed along with the additional demands on Estates arising from both the COVID-19 pandemic and from the significant expansion plans for delivery of health services now arising. It is our intention to proceed to Priced Offer Stage shortly. The evaluation process for any proposals received will then need to be completed before the necessary internal HSE approvals are sought to enter into an Agreement for Lease with a successful developer. It is hoped to complete the Priced Offer Stage of the process in Q2 of this year and we will have a clearer picture on the overall timeframe thereafter.</p>		
<p>Joe Hoare, Assistant National Director Capital & Estates</p>		
W103Q3536	It is my understanding that there are currently 13 beds closed in Aras Mhic Dara in An Cheathrú Rua. Can I be provided with an update as to why these beds remain closed and when will these beds be reopened?	Cllr D Ó Cualáin
<p>There are continuous staffing challenges in rural areas and particularly in Connemara. We are unable to open those beds due to ongoing staff shortages and difficulties in recruiting staff. We have a rolling recruitment campaign open for Staff Nurses and hope this will assist in this regard.</p>		
<p>Breda Crehan-Roche, Chief Officer, Community Healthcare West</p>		
W103Q3537	What action has HSE Community Healthcare West taken to re-open The Day Centre in Aras Mhic Dara in An Cheathrú Rua? The centre has been closed due to the Covid-19 Pandemic and has not reopened. Can I get assurances from the management team that the centre will reopen?	Cllr D Ó Cualáin
<p>We recognise the importance of Day Services as a means of social activity and respite for older people and their carers during the day. Older Persons Services has identified a space within Aras Mhic Dara where Day Services can operate. Recruitment for staff continues on a rolling basis and it is hoped, subject to staffing being available, to recommence by the end of April 2023. The centre and management are committed to same.</p>		
<p>Breda Crehan-Roche, Chief Officer, Community Healthcare West</p>		
W103Q3538	Given the ongoing delays being reported by members of the public in relation to long wait times for an ambulance within South Connemara. Does The National Ambulance Service have any plans to increase the number of staff and ambulances and/or provide a rapid response vehicle to be based out of An Cheathrú Rua Ambulance Base?	Cllr D Ó Cualáin
<p>Carraroe currently has a day and night crew - Monday through Sunday. While the HSE National Ambulance Service does not have a second ambulance planned for Carraroe in the short-term, Clifden in the West and Galway city from the East supports it.</p>		
<p>In addition to this, last year saw the introduction of a new ambulance base in Connemara. This will be permanently stationed at Recess; however, in the interim, the crews are currently in place (1x Emergency Ambulance and 1 x Rapid Response Vehicle) starting and finishing in Clifden but being dynamically deployed through the region where required, and these crews are regularly deployed on standby in Carraroe.</p>		
<p>JJ McGowan, Chief Ambulance Officer - West</p>		
W103Q3539	Why is there such a long waiting list for people having hip replacements at Mayo University Hospital and is there a longer waiting list for Medical Card patients?	Cllr J O'Hara
<p>The waiting list for Orthopaedic joint replacements in Mayo University Hospital is a public waiting list, Medical Card patients would be part of this. Patients are listed in urgent/routine categories and then chronologically, there is not a separation of public medical card holders and public non-medical card holder patients.</p>		
<p>MUH continues to outsource long waiting patients via the National Treatment Purchase Fund where possible. The</p>		

hospital is also reconfiguring space to allow a greater focus on elective work during 2023.

- Mayo University Hospital have a total of 119 patients waiting for total hip replacements on their inpatient waiting list. 38 of them are waiting longer than the National Service Plan target of 9 months.
- Of those 38, 9 are deemed to be medically unfit (consultant/guardian) to have surgery at this time, 4 have been referred out to another hospital via the NTPF and 8 have appointment dates in the past and were subsequently cancelled by consultant/patient as they were deemed medically unfit.
- The remaining 17 are active and clinically prioritised as routine/non urgent are awaiting an appointment in due course or may be referred out to another hospital via the NTPF.
- There is no difference in the wait times of medical card and non-medical card holders.

Total Arthroplasty Hip	0-3 Mths	3-6 Mths	6-9 Mths	9-12 Mths	12-15 Mths	15-18 Mths	18-24 Mths	24-36 Mths	36-48 Mths	48+ Mths	Grand Total
Count of MRN	52	27	2	5	5	3	1	9	10	5	119

T. Canavan, CEO, Saolta University Health Care Group

W103Q3540	In the event of a person being very sick and can only travel by ambulance from the West of Ireland to a Dublin Hospital for a hospital appointment is there no ambulance available for less than 1000 euro to take you to your appointment?	Cllr J O'Hara
------------------	---	----------------------

National Ambulance Service is not funded to provide ambulance transport from a person's residence to hospital appointments. Frontline Emergency Crews and ambulances respond to emergency calls and patients are taken to the nearest appropriate hospital. NAS Intermediate Care Vehicles are utilised for inter hospital transfers.

JJ McGowan, Chief Ambulance Officer - West

W103Q3541	Can I please be given an update on the current status of the NOWDOC Surgery at Oldtown, Letterkenny and what upgrades are needed to make the building compliant to building regulations and can the HSE confirm if they are presently building a small surgery for CAREDOC at the Hub Facility at Kilmacrennan Road, Letterkenny?	Cllr G McMonagle
------------------	---	-------------------------

A rental for the current NoWDOC premises at Unit 1 Oldtown, Letterkenny, Co Donegal is in place since April 2005. A notice to quit the building was issued in December 2022 by the Landlord's solicitor to the HSE.

The HSE has been working throughout 2022 to identify an alternative location from which NoWDOC can be delivered and work is ongoing in this regard. On foot of current Infection Control advice which recommends a separation of clinical & administration areas where possible, the option to deliver the clinical element of the service from the Errigal CDM Hub is being progressed. This location is preferable given proximity to LUH and has the further advantage of optimising utilisation of available space making this a 24hour building for clinical care.

Planning is ongoing to progress this move and will include engagement with relevant stakeholders.

Identification of an alternative administrative hub for a number of HSE Services is ongoing which will include the Nursing Triage and Administrative Sections of the NoWDOC Service.

Dermot Monaghan, Chief Officer, Community Healthcare Organisation, (Cavan, Donegal, Leitrim, Monaghan, Sligo)

W103Q3542	Can HSE Estates outline what their short/Long Term plans are for the vacant hospital buildings at St Conals Letterkenny which have been vacant now for over a decade?	Cllr G McMonagle
------------------	---	-------------------------

Over the last 10 years HSE -Capital & Estates have carried out a number of projects on St Conals campus which included internal refurbishments (which have seen a number of services in rental properties relocate to St. Conals) an ongoing programme of Fabric Upgrade works to secure the fabric of the buildings by replacing the roof coverings, re-rendering the external facades and window repairs is continuing.

The Design Team for the Fabric Upgrade works have reviewed the entire main buildings and made recommendations on removal of a number of interjections which have been added to the original building over the years.

There is currently an update of the accommodation review for the Letterkenny area taking place which will inform the long term strategy for St Conals this will involve the repurposing of the main St Conals building for Clinical services and the '1901 building refurbished for admin support.

Dermot Monaghan, Chief Officer, Community Healthcare Organisation, (Cavan, Donegal, Leitrim, Monaghan, Sligo)

W103Q3543	Can I have an update on the waiting times for Children to access CAMHS Services including JIGSAW in Donegal and the extent of the Out Of Hours Services for CAMHS in Donegal?	Cllr G McMonagle
------------------	---	-------------------------

In Donegal Mental Health Service CHO1, Child and Adolescent Mental Health Services [CAMHS] is a specialist service treating children and adolescents experiencing moderate to severe mental health difficulties. There are three Consultant Led multidisciplinary CAMHS teams delivering specialist services to the under eighteen year old population of Donegal. The multidisciplinary teams consist of Allied Health Professionals such as Psychology, Occupational Therapists, Social Workers, Speech & Language Therapists and Clinical Nurse Specialists.

CAMHS consultants provide an out of hours on call service, which covers Donegal/Sligo/Leitrim/West Cavan – There is a one in five rota with the three CAMHS consultants in Donegal and the two CAMHS Consultants in Sligo. The Mental Health Services NCHD on call sees the patient first and if needed and contacts the CAMHS consultant on call.

Waiting Lists for Donegal Mental Health Services CAMHS Teams [Jan 2023];

CAMHS North Donegal Team		CAMHS South Donegal Team		CAMHS Inishowen Team	
0-3 Months	45	0-3 Months	24	0-3 Months	16
3-6 Months	16	3-6 Months	15	3-6 Months	0
6-9 Months	12	6-9 Months	4	6-9 Months	0
9-12 Months	3	9-12 Months	2	9-12 Months	0
> 12 Months	0	> 12 Months	0	> 12 Months	0
TOTAL	76	TOTAL	45	TOTAL	16

Any new referrals that need access to Jigsaw are discussed at the Regional Liaison Meeting. This group comprises of services including HSE, Tusla and Jigsaw. This group then decides if any referrals would benefit from Jigsaw Services and Jigsaw would be best placed to answer the query in terms of their waitlists.

Dermot Monaghan, Chief Officer, Community Healthcare Organisation, (Cavan, Donegal, Leitrim, Monaghan, Sligo)

W103Q3545	Re Biology -Serology Lab. UHLKY. As a follow on to answer of Nov 2021 ref. W96Q3097. Can I be informed of progress to date.	Cllr G Crawford
------------------	---	------------------------

A public works contract has been awarded for the project and works are now underway on site. It is anticipated that the construction works will be completed by Q1 2024.

Joe Hoare, Assistant National Director, Capital & Estates West

W103Q3546	Can I be updated on the recent Ambulance management and support structure changes in CHO area 1 and the staff numbers involved.	Cllr G Crawford
<p>National Ambulance Service (NAS) is currently in organisational restructuring process that will support integration and align with the current CHO areas throughout the country. The national operational management has East and West Integrated Service Areas. The Head of Service for the West Integrated Service will cover counties covered under CHO Areas F (Donegal, Sligo, Leitrim, Roscommon, Mayo, and Galway), Area E (Clare, Limerick and North Tipperary) and Area D (Cork and Kerry). The person appointed to this role is Mr. Paul Gallen.</p> <p>Area F appointments.</p> <ul style="list-style-type: none"> • General Manager – J.J. McGowan. (Replaces the former Chief Ambulance Officer post) • Implementation of a 24/7 Tactical Managers (6 x posts) to Area F. <p>JJ McGowan, Chief Ambulance Officer - West</p>		
W103Q3547	Is it possible to put in place a faster way for young children to be accessed and get to see an appropriate Medical Professional in ED' so as to avoid queuing for long period's of time in an adult environment in EDs.	Cllr G Crawford
<p>The Paediatric and Emergency Department Teams in Letterkenny University Hospital are currently reviewing the acute and urgent pathways for Paediatric patients in Letterkenny University Hospital and this work is ongoing.</p> <p>The hospital is fully engaged in this process which will in the future improve the access for the Paediatric patients attending ED.</p> <p>T. Canavan, CEO, Saolta University Health Care Group</p>		
W103Q3548	Bed Registration & reopening & occupancy at Carndonagh Community Hospital. Will the HSE outline the dates that HIQA visited the hospital following completion of construction works? What issues were raised & responses returned? When did HIQA register the beds and why were five vacant beds still awaiting registration in January 2023?	Cllr A Doherty
<p>Carndonagh Community Hospital was inspected by HIQA on 20th October 2022. The issues raised were as follows:</p> <ol style="list-style-type: none"> 1. Fire Safety in the Chapel area and Dementia Unit 2. Premises - layout of twin rooms in the Dementia Unit regarding privacy, patient dignity, lighting, sinks, curtains and flooring 3. Full re-decoration of the Dementia Unit. <p>The HSE submitted a Compliance Action Plan to HIQA following this Inspection and stated that all issues identified will be completed by 31st July 2023. HIQA has accepted the Compliance Plan submitted by the HSE and the hospital is currently awaiting Registration of all 46 beds by HIQA.</p> <p>Dermot Monaghan, Chief Officer, Community Healthcare Organisation, (Cavan, Donegal, Leitrim, Monaghan, Sligo)</p>		
W103Q3549	NowDoc and Care Doc Will the HSE outline the enhancement of service provision planned for communities following the current examination of NowDoc services model? Will the HSE ensure that current sub station service delivery bases are maintained including Carndonagh in Inishowen?	Cllr A Doherty
<p>The NoWDOC GP Out of Hours Service provides an urgent GP service to patients in Co Donegal and South Leitrim.</p> <p>The current operating model of GP OOH Service is managed and delivered by the HSE (NoWDOC) as part of a hybrid model with Caredoc providing GP's for the delivery of care.</p>		

Exploratory discussions have recently commenced with relevant stakeholders surrounding the most effective arrangements needed to continue to deliver a safe quality driven service for our community. The examination of the service at this time forms part of the HSE response to clinical concerns raised by Caredoc & NoWDOC staff.

We remain fully committed to supporting our staff who are working in our NoWDOC service, and we will continue to ensure that we maintain excellent working relationships with all our partners and are very focused on working with staff and their representative bodies to explore all options available for the potential redesign of the operating model for the GP Out of Hours service in Donegal and South Leitrim to meet any challenges which are being identified.

The HSE are continuing to work in partnership with NoWDOC & Caredoc to ensure that the public using the GP Out of Hours Service and the staff working in the service, are provided with the necessary supports to deliver the best care to our service users, while ensuring that patient safety and quality of service are at the forefront of service delivery.

The HSE will continue to communicate and engage with all relevant stakeholders to ensure they are fully apprised of, and consulted on, any future developments.

Dermot Monaghan, Chief Officer, Community Healthcare Organisation, (Cavan, Donegal, Leitrim, Monaghan, Sligo)

W103Q3550	Can I have a updated report on improvements and the investment in the ambulance service in Donegal area in the last 3 years to improve the level of service?	Clr C Brogan
------------------	--	---------------------

National Ambulance Service West have faced significant challenges since 2020. With COVID 19, we had to find ways to deal with service demands while striving to keep patients and staff as safe as possible and try to maintain the level of service during COVID staff absences. The National Ambulance Service has been at the forefront of the response to the pandemic 2020. The surging infection rates over this winter assures that COVID-19 is still a threat especially to those with other serious underlying medical conditions and the elderly.

The National Ambulance Service (NAS) developed a 7-day community testing service in conjunction with CHO1, which commenced in March 2020. The NAS plays an ongoing key role in swabbing. It also played a vital role in the rollout of the vaccination programme both as vaccinators and in the establishment of temporary vaccine clinics.

- Expansion of Buncrana roster from 8 to 12 hrs shifts 7 days per week. Currently operating 10am-10pm previously operating 10am-7pm
- Expansion of Stranorlar roster to now operate 24/7. This encompasses the inclusion on a night crew 7 days per week.
- Introduction of emerging threat team operating 7 days a week and now responsible for all Covid
- Introduction of Hospital Ambulance Liaison Person in order to safeguard response capacity by reducing ambulance turnaround times and initiate measures to free up ambulances quicker.
- Change over from a pilot project to inclusion in everyday operations of the Community Paramedic Programme.
- Introduction of the Pathfinder system to enhance hospital avoidance measures. (go live 3rd April 2023)
- Introduction of and training staff on new Clinical practice guidelines which enhances advance life support and hospital avoidance measures.
- Introduction of 24/7 tactical shift manager to provide governance additional governance inside of normal operating hours and governance outside of these hours.
- Additional 12 Paramedics utilised for the backfill of operational shifts due to Annual leave, Sick leave etc. etc and 2 Community Paramedics.
- Fleet replacement of 12 Emergency Ambulances to keep in line with National Ambulance Service fleet replacement programme. Further investment in fleet since 2020 is detailed below:

- 2 x Replacement Intermediate Care Vehicles
- 3 x Replacement Response Vehicles
- 2 x Lorries for transportation of Major Emergency Equipment supporting front line service
- 1 Pathfinder vehicle
- Retrofit of Letterkenny ambulance base and introduction of an additional 5 ambulance parking spaces.
- New base built in Donegal Town and Stranorlar which are now fully operational.
- NAS management restructure re-alignment with Slaintecare, Regional Health Area F.

JJ McGowan, Chief Ambulance Officer - West

W103Q3551	Can I get an updated report on the Donegal Mental health services in the last 3 years and the steps being taken to improve the services and an updated report on the crisis response continuing of services following the creeslough tragedy?	Cllr C Brogan
------------------	---	----------------------

Donegal Mental Health Services provide their services in collaboration with Primary Care, Social Care and other community and voluntary agencies. Services provided encompass General Adult Psychiatry, Psychiatry of Old Age, Rehabilitation & Recovery, Mental Health of Intellectual Disability, and Children & Adolescent Mental Health Services. Services are provided directly in the community as well as in clinical and residential settings. Donegal Mental Health Services covers a broad geographical region and a population of close to 159,192.

Service Developments / Achievements

Donegal Mental Health Services have received both Capital and Minor Capital investments over the last two years, and the investments included:

- A major capital refurbishment project is currently underway in the Department of Psychiatry at a cost of €1.2m and commenced in September 2022. It is expected it will take up to two years to fully complete. This work will be carried out in seven phases and phases 1, 2 and 3 were completed in 2022.
- Supervised Residential Unit, Cleary House had a major refurbishment over 2021 and 2022 which cost approx. €455,000. The output of this investment is that all residents are now in single occupancy, en-suite accommodation.
- Supervised Residential Unit, Rowanfield House Donegal Town received minor capital funding of €175k in 2021 and this was used to create a separate space for the Day Centre.
- Funding was received for Park View Day Hospital in 2021 and this was used to refurbish Park View Day Hospital.
- Minister Butler Money was received in 2022 to the amount of €161,667. This was used to replace three cars, refurbish Supervised Residential Unit's and the Department of Psychiatry. The funding also provided upgrades for Low Support Services such as the Workshop based in St Conal's Hospital and Hostels based in Letterkenny.

Other achievements included:-

- Primary Care Building, Donegal Town opened in 2022 and the CAMHS Services for South Donegal relocated to this facility.
- Primary Care Building, Buncrana opened 2022. CAMHS North East Team and Adult North East Services relocated to this new facility.
- The 2021 National Service Plan recognised the need for the establishment of a Talking Therapies Service. As part of the development of services, Donegal Mental Health Services received approval for four development posts for this unique service. These included 1 Senior Psychologist, 1 Senior Occupational Therapist, 1 Social Worker and 0.5 WTE Admin Support. To date, 1 Psychologist and 1 Senior Occupational Therapist and 0.5 Admin has taken up post since March 2021. Unfortunately, the Senior Occupational Therapy post has recently become vacant and the service is actively recruiting for this post and the Social Worker Post.
- Development funding was approved in 2022 to develop the Rehab and Recovery Team. Two new posts

have been recruited and to date an Occupational Therapist, and a Social Worker joining the team in September 2022.

The Wellness Café Model under the direction of the Rehab and Recovery Team was launched in September 2019. The number of Cafes have increased to more than 15 in 2022.

- Child and Adolescent Mental Health Services are currently delivered by three multi-disciplinary teams across County Donegal, with each team being led by a permanent CAMHS Consultant. This has had a positive impact with the overall waiting lists reducing from 196 at the end of December 2019 to 136 by the end of December 2022. There has also been significant improvement in the numbers of young people waiting an excess of 12 months for an initial assessment, in 2019 there were 39 waiting an excess of 12 months compared to 2022 with 2 waiting an excess of 12 months. Additional posts recruited in 2022 included an Assistant Director of Nursing and one Clinical Nurse Specialist. In 2022, CAMHS also received additional funding to deal with waiting lists and two new Service Level Agreements were set up with the Pastoral Centre and Cunamh respectively.
- Developmental funding was also received in 2022 to employ a Clinical Nurse Specialist in Exerciseology to work within the Addiction Services.
- Dr Clifford Haley has retired and Dr Vidis Corro took up the post of Executive Clinical Director on 1st January 2023.

Creeslough Response Team

- Donegal Mental Health Services Crisis Response Team managed the implementation of psychosocial supports throughout the Creeslough tragedy.

Response to date has been intensive and focused on the needs of the people in Creeslough in conjunction with other HSE and statutory bodies. Clients were referred to clinical services and facilitated with priority assessments/services to DMHS, CAMHS, POA, Primary Care Psychology, Jigsaw and Pieta House.

This will continue over a number of months and years. In addition, clients were referred for priority services within National Counselling Service (NCS) and where necessary to the Traumatic Bereavement Service. We will continue to work with services / other agencies to identify persons who are vulnerable and in need of assistance and facilitate access to services and supports as appropriate. Donegal Mental Health Services have also received funding to recruit 2 Psychologists and 3 Clinical Nurse Specialists to provide ongoing support to the people of Creeslough over the next two years. HSE Support lines remain active to provide advice and guidance as needed and to signpost clients into services as appropriate.

Dermot Monaghan, Chief Officer, Community Healthcare Organisation, (Cavan, Donegal, Leitrim, Monaghan, Sligo)

W103Q3552	Can I get an updated report on the capital investment in all our HSE projects in Donegal and a timeframe for same?	Cllr C Brogan
------------------	--	----------------------

The following table lists the current major capital projects underway or recently completed in Donegal and the progress envisaged over the coming period. Additionally further capital investment in minor works and in replacement of medical equipment is intended this financial year. The HSE is also in the process of identifying and acquiring a number of other additional sites as part of Donegal Decongregation Plan for Disability Services.

Facility	Programme	Sub-Programme	Brief Description of Project	Current Stage (Jan 2023)	By End 2023
Donegal Town	Community Care	Primary Care	Primary Care Centre – Operational Lease	Complete 2022	Complete
Newtowncunningham	Community Care	Primary Care	Primary Care Centre - HSE own build	Complete 2022	Complete
Letterkenny	Acute	Other Acute	Renal Dialysis	Detailed	Tender

University Hospital			expansion. Increasing Capacity from 14 to 21.	Design	
Buncrana	Community Care	Primary Care	Primary Care Centre - Operational lease	Complete 2022	Complete
Dungloe	Community Care	Primary Care	Primary Care Centre - Operational Lease	Design Feasibility	Detailed Design
Letterkenny University Hospital	Acute	Infrastructural Upgrade / Maintenance	Fire Safety Upgrade - Fire Alarm upgrade & new Emergency lighting system.	Construction	Complete 2023
Letterkenny University Hospital	Acute	Infrastructural Upgrade / Maintenance	Fire Safety Works to Medical Ward Block	Detailed Design	Complete
Cleary Centre, Donegal Town	Community Care	Disability	New ID Adult Day Services facility	Appraisal	Detailed Design
Killybegs Primary Care Centre	Community Care	Primary Care	Primary Care Centre - Operational lease	Appraisal	Expressions of Interest
Letterkenny University Hospital	Acute	Infrastructural Upgrade / Maintenance	Electrical Infrastructure Upgrade, 1980's building. Phases 2 & 3. Equipment purchase in 2021	Preliminary Design	Detailed Design
Letterkenny University Hospital	Acute	Infrastructural Upgrade / Maintenance	Boiler replacement (Enabling works 2022, new gas tank)	Detailed Design	Construction
Letterkenny University Hospital	Community Care	Mental Health	AMHU anti ligature works (Tenders back April 2022)	Construction	Complete 2023
Letterkenny University Hospital	Acute	Other Acute	Extension to Laboratory (Microbiology, Virology and Immunology) to provide capacity for Additional Covid 19 Testing (additional equipment and staff already in place) and to bring the Lab up to current standards	Tender	Construction

			(not upgraded post flooding event). Stage 2c June 22		
Letterkenny University Hospital	Acute	Other Acute	Accommodation for Physio and OT dept at LUH (420sqm). This accommodation is to reinstate accommodation dispersed due to flooding at LUH.	Detailed Design	Construction
Letterkenny University Hospital	Acute	Other Acute	New Aseptic Compounding unit.	Appraisal	Tender
Letterkenny University Hospital	Acute	Other Acute	Extension and reconfiguration of the existing Oncology Day unit (8 No. treatment spaces to 15 No). Subject to new submission	Initiation	Appraisal
Donegal Hospice	Community Care	Palliative/Chronic Illness	New extension to Donegal Hospice to provide 4 No. bedrooms with family/visitor accommodation. 4 No. existing bedrooms are to be converted for administration/clinical use. Overall bed capacity will remain as existing. Funding by Donegal Hospice.	Design Feasibility	Detailed Design
Letterkenny	Community Care	Infrastructural Upgrade / Maintenance	St. Conal's Refurbishment - fabric upgrade of Block R	Tender	Complete 2023
Letterkenny University Hospital	Acute	Infrastructural Upgrade / Maintenance	Flat roof covering repair and balcony spalling repair works.	Appraisal	Appraisal
Lifford	Community Care	Older People	Proposed 25 bed Community Nursing Unit (approx 1600sqm) at Lifford to	Appraisal	Design Feasibility

			replace the existing. Site being secured, DCC owned		
Lifford	Community Care	Primary Care	Proposed new Primary Care Centre (approx 3000sqm) at Lifford.	Appraisal	Design Feasibility
Letterkenny	Community Care	Older People	110 Bed CNU & Medical Rehab to replace existing beds and address capacity deficit as per Service Priority List (formerly PPP).	Tender	Construction
Ballyshannon	Community Care	Older People	80 Bed CNU to replace existing beds at the Sheil & the Rock as per Service Priority List.	Construction	Complete 2023
Dungloe Community Hospital	Community Care	Older People	Refurbishment (must be completed in advance of Falcarragh) - 34 beds	Complete 2022	Complete
Falcarragh CNU	Community Care	Older People	Refurbishment (HIQA agreement to follow Dungloe) - 35 beds	Tender	Construction
Carndonagh Community Hospital	Community Care	Older People	Refurbishment (must be completed in advance of Buncrana) - 48 beds. Some additional works in Demential Unit, 2023 - Fire upgrade/I Control	Complete 2022	Complete
Buncrana CNU	Community Care	Older People	Refurbishment (To follow Carndonagh) - 30 beds	Detailed Design	Construction
Ramelton CNU	Community Care	Older People	HIQA Compliance - Refurbishment - 30 beds	Appraisal	Appraisal
St Joseph's, Stranorlar	Community Care	Older People	HIQA Compliance - Refurbishment -	Appraisal	Appraisal

			67 beds		
Cavan Lower, Killygordon, Lifford, Co. Donegal.	Community Care	Disability	The purchase and renovation of residential dwelling at Cavan Lower, Killygordon, Lifford, Co. Donegal.	Construction	Complete 2023
Glebe House, Stranorlar	Community Care	Disability	Refurbishment of a house owned by the Donegal Association of Parents and Friends of People with Intellectual Disabilities CLG. For 2 No. Residents. HSE to take out 99 year lease.	Complete 2022	Complete
Sliabh Sneacht, Letterkenny	Community Care	Disability	Refurbishment of two residential building owned by the HSE. 24 Sliabh Sneacht Road, 1 no. resident, and 28 Sliabh Sneacht Close, 2 no. residents.	Construction	Complete 2023
Dunfanaghy Primary Care Centre	Community Care	Primary Care	New Primary Care Centre	Detailed Design	Construction
HUB 01 - St. Conals, Letterkenny	Community Care	Primary Care	Extension (200sqm) to existing Chronic Disease Management Hub to provide support accommodation.	Detailed Design	Construction
Ballyboffey / Stranorlar Ambulance Base	Acute	Ambulance Service	The provision of an Ambulance Base at St Joseph's Hospital Stranorlar	Complete	Complete

Joe Hoare, Assistant National Director Capital & Estates

W103Q3553	What additional resources will be put in place to support the extension of the new ambulance protocol to Nenagh and what are the plans to increase bed capacity and staffing at these 3 Hospital.	Cllr S Morris
------------------	---	----------------------

The Medical Assessment Unit (MAU) pathway for 112/999 patients was recently introduced in Ennis and Nenagh Hospitals. It allows stable medical patients that meet the agreed clinical criteria to be treated in a Model 2 hospital. A key element is a telephone referral from the treating paramedic to the receiving MAU doctor, which ensures that

the right patient is brought to the MAU.

This pathway will result in patients receiving medical treatment in a hospital closer to their home, will reduce patient presentations to Emergency Departments and will release ambulances more quickly to respond to other emergency calls.

112/999 patients that do not meet these clinical criteria will continue to be transported to Emergency Departments for assessment and treatment.

The Medical Assessment Units in Ennis Hospital and Nenagh Hospitals treat patients referred by GPs, ShannonDoc and now NAS paramedics.

In Ennis Hospital, this pathway commenced on January 9th and in Nenagh Hospital on February 7th. It is envisaged that similar measures will be introduced at St John’s MAU in the coming weeks.

It is important to note that the introduction of the new ambulance pathway did not require an expansion in physical capacity at either site. To support the roll-out of the pathway in Nenagh Hospital, there has been a slight increase (0.5 WTE) in nursing resources.

The Medical Assessment Units at Ennis, Nenagh and St John’s Hospitals had their busiest year to date in 2022 with 12,737 patients being seen. This represents a 19% increase on 2021.

We have recently submitted a bid to the HSE National Acute Division for €5.2m for additional resources. Additional staff would allow us to extend the operating hours and open the Medical Assessment Units in Nenagh and St John’s to 7 days a week and increase the number of slots currently available to GPs, ShannonDoc and NAS paramedics. The bid also includes permanent funding for Ennis MAU to secure the extended hours and weekend service into the future.

C. Cowan CEO UL Hospitals Group

W103Q3554	Given that these beds were , prior to the change in ambulance protocol , set aside for GP referrals how is it envisaged that this change in Protocol will reduce the number of those presenting at UHL ED whenever they are GP or ambulance referred , are the MAUs still not limited to how many patients they can take . Without additional resources has this protocol announcement changed anything? How do they propose it will reduce dependence the UHL ED without opening additional beds and providing additional staff?	Cllr S Morris
------------------	---	----------------------

The Medical Assessment Unit (MAU) pathway for 112/999 patients was recently introduced in Ennis and Nenagh Hospitals. It allows stable medical patients that meet the agreed clinical criteria to be treated in a Model 2 hospital. A key element is a telephone referral from the treating paramedic to the receiving MAU doctor, which ensures that the right patient is brought to the MAU.

This pathway will result in patients receiving medical treatment in a hospital closer to their home, will reduce patient presentations to Emergency Departments and will release ambulances more quickly to respond to other emergency calls.

112/999 patients that do not meet these clinical criteria will continue to be transported to Emergency Departments for assessment and treatment.

The Medical Assessment Units in Ennis Hospital and Nenagh Hospitals treat patients referred by GPs, ShannonDoc and now NAS paramedics.

In Ennis Hospital, this pathway commenced on January 9th and in Nenagh Hospital on February 7th. It is envisaged that similar measures will be introduced at St John's MAU in the coming weeks.

It is important to note that the introduction of the new ambulance pathway did not require an expansion in physical capacity at either site. To support the roll-out of the pathway in Nenagh Hospital, there has been a slight increase (0.5 WTE) in nursing resources.

The Medical Assessment Units at Ennis, Nenagh and St John's Hospitals had their busiest year to date in 2022 with 12,737 patients being seen. This represents a 19% increase on 2021.

We have recently submitted a bid to the HSE National Acute Division for €5.2m for additional resources. Additional staff would allow us to extend the operating hours and open the Medical Assessment Units in Nenagh and St John's to 7 days a week and increase the number of slots currently available to GPs, ShannonDoc and NAS paramedics. The bid also includes permanent funding for Ennis MAU to secure the extended hours and weekend service into the future.

C. Cowan CEO UL Hospitals Group

W103Q3555	Out of hours GP service was discussed before the accounts committee recently, can you get a figure for the amount allocated in additional resources to ShannonDoc in preparation for the Christmas/Winter surge and a break down by area of how this funding was utilised?	Cllr S Morris
------------------	--	----------------------

ShannonDoc provide Out of Hours General Practitioner (GP) services across the HSE Mid-West area (CHO3) in Limerick (City & County), Co. Clare and North Tipperary.

An additional allocation of €193,000 was made available by HSE Mid West Community Healthcare (CHO3) for ShannonDoc through the Winter Plan to prepare for an increase in activity over the Winter Period (November 2022 – March 2023). The purpose of the additional funding was to support ShannonDoc in meeting the expected increase in demand and to enhance the ShannonDoc GP Out of Hours service across the Mid-West region over the winter months.

The additional funding was provided to enable ShannonDoc to roster additional Doctors and Triage Nurses in Out of Hours Treatment Centres across the Mid-West region. The additional resources facilitated more patients to receive 'in person' consultations by the Out of Hours GP service with the objectives of reducing the number of referrals to Emergency Departments, and reducing the number of patients presenting directly to EDs without having first been seen (triaged) by an Out of Hours GP service.

The table below provides a breakdown of the funding to ShannonDoc in respect of the additional resources:

Additional resource approved	Midweek	Weekends & Public Holidays	Total
Triage Nurse	€15,761	€41,621	€57,381
Doctor	€42,000	€94,000	€136,000
Total	€57,761	€135,621	€193,381

Please note that Limerick Doc also provide a GP Out of Hours Service in the Limerick area. It is a private GP Co-operative and is based in Dooradoyle, Limerick.

Maria Bridgeman, Chief Officer, HSE Mid West Community Healthcare

W103Q3556	What services are in place in North Tipperary for someone having a mental health episode after hours and at weekends?	Cllr S Morris
------------------	---	----------------------

The Out of Hours Mental Health Service in North Tipperary is operated by HSE Mid West Community Healthcare Mental Health Services and is an extension of Community Mental Health Teams based in Nenagh and Thurles. Out of Hours staff liaise with both teams on an ongoing basis and will arrange follow up care in the community, based on the needs of the person.

The Out of Hours service is staffed by nursing staff supported by an on-call Consultant. The service is available from 4 p.m. to 3 a.m. every day including all weekends and holidays.

Mental Health Service users who attend the Community Mental Health Teams can access the Out of Hours Service. They may receive a home visit, appointment or phone support depending on the situation. In addition, Out of Hours staff offer advice, support and sign-posting to people not known to Mental Health Services who are presenting to Mental Health Services for the first time.

If clinically determined that a person requires admission to the Acute Psychiatric Unit at Ennis General Hospital, the Out of Hours Team may support the person in this process. In this situation, the Out of Hours Team completes an initial assessment and determines the person's level of need. If admission is indicated, the team makes contact with the Consultant / NCHD on Call and discuss the case. The team works with any family present to ensure the person has travel arrangements in place. If this isn't the case, the Out of Hours team will identify appropriate transport, based on a risk assessment. On arrival to the APU, a mental health assessment will be undertaken by the Consultant / NCHD on call to confirm whether admission is appropriate. Communication with the appropriate Community Mental Health Team will be undertaken and the service user will be followed up as an inpatient or in the community as appropriate.

Maria Bridgeman, Chief Officer, HSE Mid West Community Healthcare

W103Q3557	In Oct, I was assured that the management position at Cashel na Cor was being processed for appointment and that a nursing vacancy and Social Care Worker appointment offer was also pending. Will HSE give assurances that the complement of management and staffing required for delivery of Day Services at Cashel na Cor and offering all service users what was available pre-covid is in situ again at Cashel na Cor?	Cllr A Doherty
------------------	---	-----------------------

There is no change to the staffing complement required in the Cashel na Cor centre. The staffing complement is sixteen Health Care Assistants (HCAs), two staff nurses, a manager and a Social Care Worker.

Disability Services are awaiting both staff nurse positions to be backfilled as one is currently vacant and the other staff nurse is waiting to be appointed to the manager's position. The paperwork to recruit to this post has been processed and the HSE Human Resource (HR) department will be expressing the post out to the nursing panel it has in place. Many attempts have been made to backfill the second staff nurse post, it was expressed out to the Registered Nurse in Intellectual Disability (RNID) nursing panel on the 7th October 2022 but no expressions of interest were received. A skill mix review of staffing requirements has since been completed for the centre and it has been approved that the post can be filled by a Registered General Nurse (RGN). Interviews for an RGN panel are scheduled to take place on 22nd February 2023. The Social Care Worker position is also vacant as this position is subject to further union engagement before recruitment can take place.

Once the complement of management and staffing required for the safe delivery of Day Services is in place, Cashel na Cor will be able to open at full capacity again. Cashel na Cor is currently operating to capacity within the staffing cohort available. The service will offer all persons with disabilities the same service level as was offered pre-Covid as soon as the staffing complement available allows for the service to do so safely and effectively.

Dermot Monaghan, Chief Officer, Community Healthcare Organisation, (Cavan, Donegal, Leitrim, Monaghan, Sligo)

W103Q3558	New group home and Respite availability in Inishowen.	Cllr A Doherty
------------------	---	-----------------------

	Is the new group home mentioned at the Nov meeting occupied and staffed? Is respite provision now available at Riverwalk House and is agreement and plans in place to enable additional respite provision and access and use of the hydrotherapy facility at Milltown House?	
<p>There is a new home ready for one of the residents living in Riverwalk Respite House and staff for this home are currently being recruited. Disability Services await the appointment of a nurse manager for this home, as the appointment of a nurse manager is a legislative requirement and the new home cannot be registered as a designated centre by the Health Information Quality Authority (HIQA) until the nurse manager, known as the Person in Charge, is in place. This post has been offered out to the nursing panel five times by the HSE Human Resources (HR) department, and was accepted twice and declined twice. A new nursing panel was then formed by the HR department and the post has since been offered out to a new candidate on that panel. Once staff are in place, the transition for this resident will progress and Riverwalk House will resume the provision of a respite service.</p>		
<p>In relation to Milltown House, HSE Estates are currently awaiting the outcome of a specialist mica assessment of the building. The initial technical assessment of the building indicated that a full mica assessment is warranted. HSE Estates have advised Disability Services that the results of the specialist mica assessment will not be available until June/July 2023. Long term planning, which will require significant upgrade works to Milltown House, can only be progressed when the outcome of the specialist mica assessment is available.</p>		
<p><i>Dermot Monaghan, Chief Officer, Community Healthcare Organisation, (Cavan, Donegal, Leitrim, Monaghan, Sligo)</i></p>		
W103Q3559	Can the HSE give update on the progression of the proposed 50 Bed unit at the Sacred Heart Hospital Roscommon.	Clr T Ward
<p>Notification of Conditional Grant of Planning Permission for the proposed 50 bed unit development was received from Roscommon County Council on 21st February 2023, with the final decision now anticipated to be received in late March 2023. This will be a significant milestone for the project. The HSE and its design team are now reviewing the various conditions arising. The project will then be progressed through the detailed design stage, contractor tender process, HSE Board Approval and contract award process, in accordance with the HSE's capital projects approvals protocols. It is hoped that the tender process for the building works will be completed late this year and the successful building contractor identified with construction works subsequently commencing in early 2024.</p>		
<p><i>Joe Hoare, Assistant National Director Capital & Estates</i></p>		
W103Q3560	How many older people are on waiting list for home help hours in South Roscommon and in Co Roscommon.	Clr T Ward
<p>The data for <u>County Roscommon</u> is as follows:</p> <ul style="list-style-type: none"> • Number of clients receiving a service in the county of Roscommon 1079 • Number of new clients in the county of Roscommon in 2022 341 • Number of clients in County Roscommon awaiting a new service: 9 • Number of clients in County Roscommon awaiting additional services: 105 • The data for <u>South Roscommon</u> is as follows: • Number of clients in South Roscommon awaiting a new service: 7 • Number of clients in South Roscommon awaiting additional service: 77 <p>The hours above reflect both Home Help and Home Care Package data.</p> <p>The numbers of clients increase year on year in Roscommon and the Home Support Service are projected to deliver more hours in Roscommon than previous years. However, both the HSE and private Service Providers are having</p>		

difficulty in recruiting Health Care Support Assistant's (HCSA) across CHW.

The HSE have a rolling recruitment campaign currently underway for Health Care Support Assistant's (formerly known as Home Help).

In addition, the HSE engage with current staff within the HSE to offer them additional hours where possible.

The Home Support Department also engages with the private home support providers who are continually recruiting to fill their vacancies.

Breda Crehan-Roche, Chief Officer, Community Healthcare West

W103Q3561	How many dentists in Co Roscommon and the local catchment areas provide services to people under the medical card scheme?	Cllr T Ward
------------------	---	--------------------

There are 6 Dentists that provide services to people under the medical card scheme which are listed hereunder;

Location	Dental Practice	Contact Number
Athlone	Elizabeth Boland	090 6475956
Athlone	Daniel Harney – Westside Dental	090 6494110
Boyle	Killian Vaughan Yasmin Ali	071 9670838 071 9670838
Castlerea	Adrian Boyle	094 9622829
Roscommon Town	Eleanor Keaveney	090 6627707

Breda Crehan-Roche, Chief Officer, Community Healthcare West

W103Q3562	Can I be provided with a detailed list of all the services available to the public at the Monksland Primary Care Centre Athlone, and also the Primary Care Centres in Co Roscommon	Cllr T Ward
------------------	--	--------------------

Roscommon Primary Care Centre – Public Services
Physiotherapy
Occupational Therapy
Speech and Language
Public Health Nursing
Area Medical Officer
Podiatry
Dentistry
Dietician
Audiology
Continence Care
Psychology
Ophthalmology
Psychiatry Services – Day Hospital
Drug Addiction Counselling
National Counselling Service

GP Service
Tusla
Jigsaw
Roscommon Home Services
Outsiders who use clinic space regularly
Atlantic Prosthetic Orthotic Services Ltd
Affidea – Provision of CT/Ultrasound/X-Ray/DXA Scans
Diabetic Retina Screening
West Doc – out of hours GP service

Monksland Primary Care Centre	Service
Primary Care	PHN OT (Paeds and Adult) Physio (Paeds and Adult) SLT (Paeds and Adult*) Podiatry Dietitian Child & Family Psychology Community Medical Doctor Tier 2 Clinic (<6yo) Access to Psychology Services Ireland - Adult Psychology Service (*SLT Adult service Therapist on Mat Leave: Unable to back fill to date due to national shortage of SLT)
Primary Care ICPCD (Integrated Care Program Chronic Disease)	Cardiac ** Diabetes (**Cardiac Physiologist post currently unfilled due to national shortage)
Mental Health	Adult MH Out Patient Clinic CIPC (Counselling in Primary Care) Addiction Services POLL (Psychiatry of Later Life)
Older Persons	ICPOP (Integrated Care Program for Older Persons)
Children Services	Paediatrician Clinic
Children's Disability	Appointments with Physio, OT, Psychologist, SLT

Breda Crehan-Roche, Chief Officer, Community Healthcare West

W103Q3563	Can I be advised as to what arrangement, if any, has been made with Glencar Healthcare Co Ltd and Valley Healthcare Co Ltd in respect of the proposed development of a new Primary Care Centre at Seamus Quirke Road, Galway; was the contract tendered for; will the HSE own the building; will the HSE be obliged to rent/lease the building; what will be the cost of such a lease; can we have a full and comprehensive statement on the matter?	Cllr D Bree
------------------	--	--------------------

The Health Service Executive (HSE) is seeking to advance a Primary Care solution for Galway City West under an operational lease model. This model involves Primary Care services being provided by both the public and private sector (HSE and General Practitioners) on an integrated basis, through private sector provision of the Primary Care Team (PCT) infrastructure with the HSE taking a fixed term lease for their portion of the facilities. This national approach has been subject to review by various parties including the C&AG and is deemed a value for money initiative. The procurement process involves a number of stages where expressions of interest are initially sought

with priced offers subsequently being received at a later stage. This process has been followed in the case of Galway City West. Engagement between the HSE's Capital & Estates division and the successful bidder for the delivery of primary care accommodation for Galway City West is ongoing with a view to concluding an agreement for lease (AFL) in the coming months. The successful bidder has sought planning permission for the development. A Further Information request has recently been received by the developer in that regard. As a legal agreement has not yet been concluded between the parties, the HSE is not currently advising the details of that intended agreement including the cost of the proposed lease. This information can be made available in due course.

Joe Hoare, Assistant National Director Capital & Estates

W103Q3564	What was the cumulative number of bed days lost in Sligo University Hospital as a result of delayed discharge, in 2022, and what plans does the Department of Health and the HSE have to increase the number of step-down beds and step-down facilities in the hospital catchment area?	Cllr D Bree
------------------	---	--------------------

The cumulative number of bed days lost due to delayed discharges for Sligo University Hospital for 2022 is 4009.

T. Canavan, CEO, Saolta University Health Care Group

The HSE currently has fourteen contracted beds in Nazareth House and eight contracted beds in Ballymote Nursing Units. These beds facilitate respite and convalescence only. Patients whom require additional services, such as Speech and Language or Occupational Therapy supports, are not suitable to be admitted to these beds as those services are not available in these respite/convalescence beds.

Patients requiring Speech and Language or Occupational Therapy supports must be transferred to step-down beds, such as the rehabilitation units in St. John's Community Hospital Sligo, St. Patrick's Community Hospital in Carrick on Shannon and Our Lady's Hospital in Manorhamilton, which is governed by Sligo University Hospital (SUH).

St. John's Community Hospital has twenty consultant beds and thirteen non-consultant beds, while St. Patrick's Community Hospital has nineteen short stay beds.

There are step-down beds available within the SUH catchment area, however, the services can be limited for patients with more complex needs.

Dermot Monaghan, Chief Officer, Community Healthcare Organisation, (Cavan, Donegal, Leitrim, Monaghan, Sligo)

W103Q3565	What type of monitoring, if any, was carried out by the HSE in respect of G.P's to check if they continued to prescribe anti psychotic/anti depressant medication to their patients attending CAMHS, in the absence of any consultant psychiatric follow up, over an extended period?	Cllr D Bree
------------------	---	--------------------

Community Healthcare West CAMHS regularly audits medication management to provide appropriate assurance to HSE management.

In addition Community Healthcare West CAMHS operates a dedicated Physical Monitoring Clinic for young people attending Community Healthcare West CAMHS and prescribed antipsychotic medications.

Physical Monitoring Clinic:

Monitoring the following in clinic appointments:

- Weight, height & waist circumference
- Blood pressure & pulse
- ECG's

- Bloods (HbA1c, Prolactin, Blood Lipids, LFTS, U&E'S, FBC)
- Side effects – based on the Glasgow Anti-Psychotic Side effect Scale (GASS) with young people
- Physical Health Review (Assessing physical activity levels, diet, Energy levels & sleep) based on the MECC tool to support assessment of physical health status

Young people who commence anti-psychotic medication require assessment of side effects & weight to be obtained weekly for the first six weeks of treatment. These are carried out via a blended approach of both in- clinic appointments & phone consultations by the clinic over this 6 week period. The young person is then be seen in clinic for the above investigations at 4 weeks, 8 weeks, 12 weeks, 3 months & 6 monthly thereafter whilst prescribed anti-psychotic medications.

Breda Crehan-Roche, Chief Officer, Community Healthcare West

HSE Mid West Community Healthcare Mental Health Services has increased the number of CAMHS Registered Consultants operating in CAMHS from 3.6WTE in January 2022 to 7.2WTE by end of March 2023. This provides strong Consultant cover and medical governance across the CAMHS service in the Mid West, as there is a Consultant Psychiatrist in position in each of our six CAMHS teams. A seventh CAMHS Team is currently in development and there is a Consultant in place for this team also.

A process is in place whereby the care of children attending CAMHS, including prescriptions, are reviewed by a consultant psychiatrist on an ongoing basis.

All CAMHS teams also have a Non Consultant Hospital Doctor (NCHD) as part of their Multidisciplinary Teams. From time to time, unexpected leave can occur which may result in a team being without a consultant psychiatrist for a period of time. In these circumstances, NCHDs can provide prescriptions and they liaise with GPs.

In the extremely rare situation where both a Consultant and NCHD are not available to the team, the Executive Clinical Director works closely with the Multi-Disciplinary Team, and with GPs, to support them in resolving concerns in relation to prescriptions when requested to do so.

Maria Bridgeman, Chief Officer, HSE Mid West Community Healthcare

In Donegal Mental Health Service CAMHS clinicians are responsible for the monitoring of all patients that are prescribed antipsychotics for the management of their mental illness. Regular review appointments are offered to these young people.

Repeat prescriptions are offered in CAMHS for the young people that are prescribed medication for their mental health difficulties.

Caseloads are currently being reviewed to ensure that no young people on medication have been lost to follow up.

For antipsychotic medication monitoring regular blood tests and sometimes ECGs are required.

In most cases the young people are sent to Sligo University Hospital lab for blood tests and Cardiac technicians for ECGs.

In some cases GPs are asked to complete the above for the young people. Some parents opt for this option as they have stated that the young person may feel more comfortable getting it done at the GP surgery.

A small number of children will need sedation before a blood test, these are referred to the Paediatrics department

for blood tests.

These blood tests are only done 6-12 monthly or on rare occasions more frequently if there are concerns regarding side effects.

Dermot Monaghan, Chief Officer, Community Healthcare Organisation, (Cavan, Donegal, Leitrim, Monaghan, Sligo)

W103Q3566	Has the HSE entered into agreements with private commercial companies to rent properties for use as Primary Care Centres in Athenry, Ballina, Bunrana, Ennis and Mountbellow; what companies are renting/leasing the properties to the HSE in each location; what is the cost of the lease in each location?"	Cllr D Bree
------------------	---	--------------------

The HSE has individual agreements in place to lease accommodation under an operational lease model in the five locations referred to in the question for the provision of primary care and related services. The following table sets out the entities leasing the properties to the HSE and the lease cost in each of the locations. A number of the properties have subsequently been acquired and the HSE is no longer dealing with the party that was successful in the original procurement process.

Primary Care Location	Original Successful Developer	Current Landlord	Current Rent Per Quarter (Excluding Vat)
Athenry	<ul style="list-style-type: none"> • Dr. Michael McGloin • Dr. Ian O'Connor • Dr. Bridget Keane • Dr. David Meehan Trading as Raheen Developments (sold to Varsovian, then Valley Healthcare subsequently purchased)	Valley Healthcare	€58,589.54
Ballina	Dr. Sean Moffatt	Valley Healthcare	€47,285.75
Mountbellow	<ul style="list-style-type: none"> • Dr Matt Lenihan • Patricia Lenihan • Dr. Joan Kearney Trading Pine Grove Property Partnership	Valley Healthcare	€19,712.25
Station Road, Ennis	Valley Healthcare	Valley Healthcare	€201,234.00
Bunrana	Valley Healthcare	Valley Healthcare	€172,800.38

Joe Hoare, Assistant National Director Capital & Estates

W103Q3567	Please outline service provision by the Mental Health Day Service at Brackernagh Health Centre Ballinasloe including number and age range of attendees, clinical governance, staffing requirements, vacant posts and current staffing composition and post vacancies if any and include details of access to counselling and social work services.	Cllr E Francis Parsons
------------------	--	-------------------------------

Brackernagh Health Centre consists of Ballinasloe Day Hospital, Ballinasloe Day Centre, and Ballinasloe Outreach Team.

Active/current Service Users

We currently have 795 open/service users at present for the Consultant led team operating from the Health Centre in Ballinasloe.

Age range from 18 years to 65 years. Persons who reach the age of 65 years while a service user remain with the adult team. Persons who are referred over the age of 65 years are referred to the POLL team.

Staff Composition

There are currently 32 positions attached to this service (details & breakdown for these posts attached).

Vacant posts

Currently three vacancies:-

- Psychologist
- Social Worker - cross cover currently in place 3.5 days per week
- RPN – In final stage of recruitment stage (awaiting release date)

Counselling

In addition to one to one support from various members of the clinical team, there is an active Dialectical Behaviour Therapy team in the area which provides one to one and group sessions.

Clinical Governance

Consultant is clinically responsible for patient care. We have a management structure for various grades of staff.

	Admin	Addiction Counsellor	Senior House Officer	Consultant	Registrar	ADON	Staff Nurse	ANP	Enhanced Nurse	CNS	CNM2	Social Worker	Psychologist	Occupational Therapist	HCA	Total Positions
Ballinasloe Day Hospital	2		1	1	1	1	4	1	2	2	1	1	1	1		19
Ballinasloe Day Centre		2							1	1	1				3	8
Ballinasloe Outreach Team									1		1				3	5
																32

Breda Crehan-Roche, Chief Officer, Community Healthcare West

W103Q3568	Please provide a timeline re the progression of HSE vacating St Brigid's Hospital Campus and property listing in accordance with the transfer and sharing of state assets outlining portion being retained by HSE for current and future services planning.	Cllr E Francis Parsons
------------------	---	-------------------------------

The HSE's Capital & Estates department is currently dealing with a very significant property workload with the priority focus being the provision of accommodation to support the expansion of healthcare services and the recruitment of additional staff. The matter of the disposal of surplus lands and buildings at St. Brigid's Hospital Campus is also being progressed. The decanting of buildings surplus to HSE's requirements is nearing completion with remaining in-use store buildings due be vacated by Q3 2023. HSE Estates are working through the preparations

of / rectification of titles / folio maps and the decommissioning of utility services. It is anticipated in Q2 2023, that HSE Estates will appoint an external Property Advisor to assist the HSE in developing the strategy for the disposal of surplus lands and buildings in St Brigid's. The property is listed on the OPW state property mapping register as surplus to requirement in accordance with the DPER protocols for the transfer and sharing of state assets.

Joe Hoare Assistant National Director Capital & Estates

W103Q3569	Delayed Transfer of Care patients in the NRH is impacting admissions for patients with Stroke and Acquired Brain Injury. Waiting time now approx 180 days- up from average 132 days in 2019 to 2022. Outline any HSE plans for a Western Regional Rehabilitation Centre and current rehabilitation services/ stroke/ BI programmes in CHO2 for those with Stroke and Brain Injury awaiting prolonged admission to NRH for essential rehab therapies.	Cllr E Francis Parsons
------------------	--	-------------------------------

The HSE Capital Plan includes for the development of a Rehabilitation Unit at Roscommon University Hospital. This project is likely to take a number of years to complete. Following completion of the Stage 1 Preliminary Design for the proposed Rehabilitation Unit a number of options have been proposed in relation to the siting of that Unit within the Campus. Further consideration has also been given to the overall infrastructural requirements at the hospital in light of the increased activity of recent years. Furthermore the Covid-19 pandemic has highlighted the benefits of modern clinical spaces which meet the latest infection control standards. As a result, prior to finalising the exact location and footprint for the new Rehabilitation Unit it is intended to review the overall site masterplan for Roscommon University Hospital to ensure it will allow for orderly development of sufficient new build facilities and refurbishment of any vacated spaces to meet all the envisaged accommodation needs of the hospital into the future.

Joe Hoare, Assistant National Director, Capital & Estates West

W103Q3570	Please provide figures for HSE budget surplus earmarked for Carer /Personal Assistant hours which were sanctioned by HSE in 2022 but were unable to be fulfilled by service providers/ agencies/ HSE outlining number of unfulfilled hours represented and actions arising from surplus funds for carer/PA hours in 2023.	Cllr E Francis Parsons
------------------	---	-------------------------------

Community Healthcare West are extremely challenged sourcing carers to provide care that is approved for home support.

Community Healthcare West have recently carried out two Recruitment Campaigns in 2021 and 2022 for Home Care Support Assistants with Human Resources locally recently launched a third **rolling campaign** on 2nd of February 2023 or the above posts.

In addition, Private Providers for Home Support are also seeking to recruit staff on a daily basis.

There are currently 531 clients on a waiting list for either a new or additional Home Support service in Community Healthcare West. This equates to 2,179 hours.

The budget for the waiting list hours above is earmarked in the overall budget.

Number of clients awaiting a New Service		January 2023
	CHO2	183
	Galway	41
	Mayo	133
	Roscommon	9
Number of clients awaiting Additional Hours		January 2023
	CHO2	348
	Galway	112

	Mayo	131
	Roscommon	105

Breda Crehan-Roche, Chief Officer, Community Healthcare West

W103Q3571	Can the HSE Estates and SAOLTA University Hospital Care Group provide an update on the provision of Additional Car Parking at Sligo University Hospital to include what plans are in place to provide <ul style="list-style-type: none"> a. Long Term Solution to Staff and Service user parking b. Short Term Solution during planned construction works. 	Cllr D Gilroy
------------------	--	----------------------

A public works contract to provide additional long term car park facilities at Sligo University Hospital, has commenced construction on site in February 2023 with both phases anticipated to be completed by the end of this year. This will provide an additional 160 carpark spaces on the hospital campus.

A short term option of accessing additional parking on a designated site on Connaughton Road is being achieved with the support of the North West Hospice and will be available for staff only from March 2023 to alleviate some parking deficits during construction works. It is intended these space will also be utilised during the intended hospice project.

Joe Hoare Assistant National Director Capital & Estates

W103Q3572	Can the RHFV be provided with a report on the Longest Shortest and Average length of time that successful applicants/Candidates in Both Healthcare and Admin service are on a panel for appointment within the <ul style="list-style-type: none"> c. Saolta Hospital Group Hospitals before appointment d. CHO1 Area before Appointment 	Cllr D Gilroy
------------------	---	----------------------

The minimum duration for a panel is one year and the maximum time it can be in place for is 3 years. We would have campaigns that were disbanded after 1 year and some that were extended but that depends on service needs. All appointments are subject to approval through Employment Control Committee.

T. Canavan, CEO, Saolta University Health Care Group

Where posts are being advertised by CH CDLMS, applicants are advised in advance of applying whether a panel for appointments is to be formed. They are further advised as to whether the panel will be used for temporary or permanent appointments or both. CH CDLMS HR Departments establish panels across all grades, and these typically are for no longer than 36 months duration and no less than 24 months duration. The HR Department will ensure that offers are being expressed on a continuous basis to all live panels, and that all opportunities are being explored to fill vacant positions. Where a panel is being expired, all candidates who received a placing on the panel will be informed in writing that the panel is being expired. For some grades of staff, rolling campaigns are also run by the recruitment departments. These rolling campaigns are particularly used for hard to fill grades of staff, e.g. Home care support assistants. There are also occasions where a supplementary panel may be required to be established. These panels will be advertised as "supplementary" and will only be drawn upon where the original panels have been exhausted for offers of appointment.

Some panels are also established by the National Recruitment Service on behalf of CH CDLMS (CHO1 area). Similarly, HBS will provide information to all applicants as to whether a panel is being formed following a recruitment competition. The CPSA has the statutory authority to oversee appointments to positions in the HSE. While it is the CPSA's preference is that panels are expired after two years, it accepted that the HSE could make appointments from panels for up to 3 years in particular cases where the costs per hire associated with the appointment process are very high by virtue to the large volumes of candidates for a relatively low number of vacancies.

Dermot Monaghan, Chief Officer, Community Healthcare Organisation, (Cavan, Donegal, Leitrim, Monaghan, Sligo)

W103Q3573	Can the RHFV be provided with a report on what numbers Under 15 Years, 16-75 Years and Over 75 Years have attended the CareDoc Service in Sligo in the last 12 Month reporting period and How many of these were referred to A&E.	Cllr D Gilroy
------------------	---	----------------------

Total OOH Contacts SLIGO 1 Feb 22 to 1 Feb 23	20536
Total OOH Contacts SLIGO 0-16 years	7483
Total OOH Contacts SLIGO 16-65 years	9162
Total OOH Contacts SLIGO 65 years +	3862
Total OOH Contacts SLIGO Unknown Age	29

Total OOH Contacts SLIGO Referred to A&E	2601	
Total Referrals to A&E 0-16 years	861	33%
Total Referrals to A&E 16-65 years	1230	47%
Total Referrals to A&E 65 years+	505	19%
Total Referrals to A&E Unknown Age	5	

Dermot Monaghan, Chief Officer, Community Healthcare Organisation, (Cavan, Donegal, Leitrim, Monaghan, Sligo)

W103Q3574	Can the Saolta Hospital Group report on how many Attendees at A&E in each Hospital within the Group have left / self discharged without being treated /against advice / without saying why in the last 12 Month Reporting Period	Cllr D Gilroy
------------------	--	----------------------

All attendees who leave A&E without being seen are recorded as 'Did not Wait to be Seen.'

Mayo University Hospital:

The Emergency Department discharges between 01/02/2022 and 01/02/2023 where the Discharge Destination is "Didn't Wait to be Seen" total is 2,113.

Galway University Hospitals:

Total attendances at the Emergency Department between January '22 and January 23 inclusive were 80,840. Of this overall figure 4, 013 are recorded as Did not Wait to be Seen.

Portiuncula University Hospital:

In 2022, out of a total of 29,962 ED attendances, there are 1,502 attendances (~5%) with an outcome of *Didn't Wait to be Seen*.

Sligo University Hospital:

The Emergency Department discharges between 01/02/2022 and 01/02/2023 where the Discharge Destination is "Didn't Wait to be Seen" total is 2,371.

Letterkenny University Hospital:

Of the 45,676 ED attendances in 2022, 1,947 did not wait to be seen.

T. Canavan, CEO, Saolta University Health Care Group