

# Voluntary Antenatal HIV Screening In Ireland, 2016

This report describes data from the antenatal HIV screening programme in Ireland in 2016. Further information on the system and a copy of the HIV antenatal data collection form can be found at <http://www.hpsc.ie/a-z/hivstis/hivandaids/antenatalhivtesting/>.

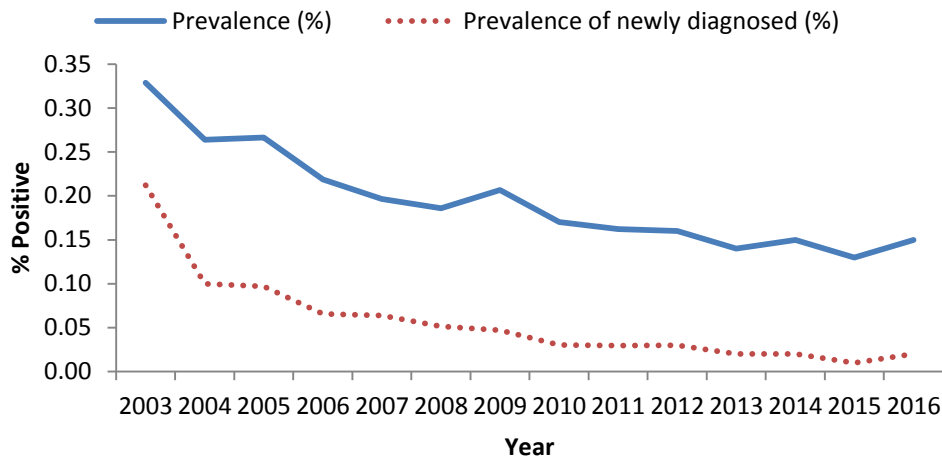
## Antenatal screening results - 2016

- The national reported uptake of HIV antenatal screening (from 16 hospitals) in 2016 was 99.8%. However, data was only available from 56,865 antenatal patients although there were 63,897 registered births in 2016.
- Eighty three women tested HIV positive at their antenatal screen in 2016, giving a HIV prevalence rate of 0.15%, similar to the rate in previous years (see Table 1 and Figure 1).
- Of the 83 cases, ten were newly diagnosed at their antenatal screen (i.e. HIV infection was not previously known). The prevalence of newly diagnosed HIV infection was 0.02% in 2016, similar to previous years (see Table 1 and Figure 1).
- The prevalence of HIV infection among pregnant women varied among HSE areas, ranging from 0.05% in HSE West to 0.25% in HSE Dublin Northeast (see Table 2).

**Table 1: Results of the antenatal screening programme, 2009 to 2016**

	2008	2009	2010	2011	2012	2013	2014	2015	2016
Number of hospitals participating	18/20	19/20	19/20	20/20	18/20	16/20	17/19	18/19	16/19
Number of live births (from CSO)	75,173	75,554	75,174	74,650	72,225	68,954	67,462	65,909	63,897
Number of women booked	66,558	68,378	70,024	68,111	64,803	57,638	63,538	63,217	56,865
Number offered test	66,558	68,026	69,615	67,849	64,803	57,638	63,538	63,217	56,865
Number tested	66,210	67,694	69,292	67,135	64,781	57,618	63,532	63,214	56,747
Uptake of HIV antenatal test (%)	99.5	99.0	99.0	98.6	99.9	99.9	100.0	100.0	99.8
Number HIV positive	123	140	118	109	105	83	93	84	83
Prevalence (%)	0.19	0.21	0.17	0.16	0.16	0.14	0.15	0.13	0.15
Number newly diagnosed HIV positive	34	32	21	17	22	14	11	9	10
Prevalence of new diagnoses (%)	0.05	0.05	0.03	0.03	0.03	0.02	0.02	0.01	0.02

**Figure 1: Prevalence of HIV and newly diagnosed HIV among pregnant women, 2003 to 2016**



**Table 2: Results of the antenatal screening programme by HSE area, 2016<sup>1</sup>**

HSE area	Number of women booked	Uptake of test (%)	Number HIV positive	Prevalence (%)	Number newly diagnosed positive	Prevalence of newly diagnosed HIV positive (%)
Dublin Mid Leinster	21,454	100.0	28	0.13	2	0.01
Dublin Northeast	13,432	100.0	33	0.25	5	0.04
South of Ireland	11,105	100.0	17	0.15	1	0.01
West of Ireland	10,874	98.9	5	0.05	2	0.02
<b>Total for Ireland</b>	<b>56,865</b>	<b>99.8</b>	<b>83</b>	<b>0.15</b>	<b>10</b>	<b>0.02</b>

### Limitations of the HIV antenatal screening data

Antenatal screening data were available for 56,865 women from 16 maternity hospitals in 2016 (data was not available for Letterkenny General Hospital, Cavan General Hospital, and South Tipperary Hospital, Clonmel). In addition, 8 of the 16 hospitals were able to provide data on public patients only (see appendix 1 for details). There were 63,897 births in 2016 and while these figures are not directly comparable, there was a shortfall in returns for approximately 11% of antenatal women. This is a higher figure than 2015 (4%) and 2014 (6%) although data from more hospitals were available in previous years.

Booking data was retrieved from a variety of sources including maternity unit IT systems (n=6), laboratory IT systems (n=6), maternity unit manual data collection (n=4) and patient administrations systems (n=4).

<sup>1</sup> See Appendix 2 for areas and corresponding hospitals

**Appendix 1: Technical Notes:**

- Percent uptake is calculated as the number of women tested divided by the number of women booked, multiplied by 100.
- Prevalence of HIV infection is calculated as the number of women testing positive divided by the number of women tested, multiplied by 100.
- Prevalence of new diagnoses is calculated as the number of women testing newly HIV positive divided by the number of women tested, multiplied by 100.

**Appendix 2: HSE areas and hospitals**

<b>HSE Area</b>	<b>Hospital</b>	<b>Type of data provided</b>
Dublin Mid Leinster	Coombe Women's Hospital	Public and Private patients
	National Maternity Hospital, Holles St	Public and Private patients
	Midlands Regional Hospital, Mullingar	Public and Private patients
	Midlands Regional Hospital, Portlaoise	Public and Private patients
Dublin Northeast	Rotunda Hospital	Public and Private patients
	Cavan General Hospital	Not available
	Our Lady of Lourdes Hospital, Drogheda	Public patients
West	Letterkenny Hospital	Not available
	Midwestern Regional Maternity Hospital, Limerick	Public patients
	Sligo General Hospital	Public and Private patients
	Mayo General Hospital	Public and Private patients
	Portiuncula Hospital	Public and Private patients
	University Hospital Galway	Public patients
South	Cork University Maternity Hospital	Public patients
	Kerry General Hospital	Public patients
	South Tipperary Hospital, Clonmel	Not available
	St Luke's Hospital, Kilkenny	Public patients
	Waterford	Public patients
	Wexford General Hospital	Public patients

**Report prepared by Kate O'Donnell, Ronan Bambrick and Derval Igoe. December 2017.**

**We would sincerely like to thank the staff in the maternity hospitals and maternity units for providing antenatal screening data for 2016.**