



National Clinical Programme for Self-harm and Suicide-related Ideation (NCPSHI)

2024 A Year in Review





Welcome to NCPSHI Review

As we reflect on 2024, we'd like to share some of the key highlights, including both our successes and the challenges we have encountered as a National Clinical Programme.

The NCPSHI's vision remains clear, ensuring that those presenting receives a compassionate, empathic, validating response, and a therapeutic assessment and intervention from a suitably trained mental health professional. Every effort is made to ensure that a family member or supportive adult is involved in assessment and safety planning, and that they are followed up and linked to appropriate next care.

We extend our gratitude and appreciation to all individuals who have diligently worked under challenging conditions, to deliver a high quality service to our patients. We would like to also thank everyone for their continued support and compassion to continue to improve the interventions and advocate for people who self-harm or have suicide-related ideation.

As we look to 2025, we look forward to cementing these relationships and championing the work further.

We hope that when you read this you are proud of the achievement we, as a collective, have made and continue to make, and we look forward advancing this further in the year ahead.



National Team – Former and new members

NCPSHI extends a grateful thank you and well wishes to Professor Vincent Russell and Dr Katerina Kavalidou.

NCPSHI welcomes to the programme Dr Shane McInerney (Clinical Lead) and Dr Maeve Cosgrove (Database Manager).



Key Pillars of the NCPSHI

RESPONSE

Compassionate
Validating
Empathic

Each person will receive a
timely expert biopsychosocial

ASSESSMENT

Expert intervention and a
collaborative written safety
plan

Every effort is made to ensure

FAMILY CARER

Involvement at assessment and
discharge

Each person receives
follow up

BRIDGE TO NEXT CARE



The NCP aims to ensure that all patients who present following self-harm or with suicidal ideation will receive the four key pillars of care.

EMERGENCY DEPARTMENT

Delivery of the programme is in all 26 adult Emergency Departments that are open 24/7, and one paediatric hospital. We currently have 27 sites submitting presentation data.

PRIMARY CARE – SUICIDE CRISIS ASSESSMENT NURSE SERVICE (SCAN)

Since 2022 the governance for SCAN is now part of the NCPSHI.

SCAN is operating in 13 counties with 27 WTEs.

Data collected from ED presentations showed approx. 50% of NCPSHI referrals were for suicide ideation alone in the absence of a self-harm act, so there is considerable scope to develop the SCAN service nationally within primary care, including in a CAMHS context.

There is one CAMHS SCAN service in North Dublin.

Audit of the Mental Health Assessment rooms within the Emergency Department



Background

A self-assessment audit was completed by MH clinicians implementing the NCPSHI across 27 acute hospital emergency departments. The finding of greatest concern was that a dedicated room for such assessments was found to be no longer present in the EDs of eight acute hospitals.

NCPSHI together with the Emergency Medicines Programme (EMP) visited these eight hospital sites. The final site visit will be completed in March 2025.

Following, a report will be forwarded to MH NCAGL and Chief Clinical Officer, HSE.



Mental health assessment rooms before and after COVID-19 restrictions within Irish hospital Emergency Departments.



Sally Ann Lovejoy National Nurse Lead, Vincent Russell National Clinical Lead, Katerina Kavalidou Database Manager, Rhona Jennings Programme Manager
National Clinical Programme for Self-Harm and Suicidal-related Ideation (NCPSHI)
Email: sally.lovejoy@hse.ie

INTRODUCTION

Best practice recommendations published by the National Institute for Health and Care Excellence (NICE), and reflected in the National Clinical Programme for Self-Harm and Suicide-related Ideation (NCPSHI), Model of Care states that biopsychosocial assessments in Emergency Department (ED) settings must be carried out in a private, designated room where it is possible to speak in confidence without being overheard.^{1, 2}

Given that the reconfiguration of ED pathways to manage Covid and non-Covid patients has impacted substantially on the structure and nature of work in the ED settings³, it was timely to re-audit the mental health assessment rooms within the EDs which implement the NCPSHI, following the original



AIMS

To explore the impact of COVID-19 related reconfiguration of care pathways on mental health assessment rooms within Irish hospital emergency departments.

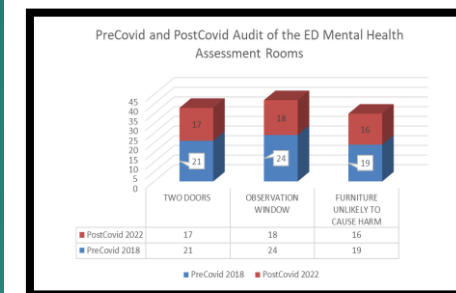
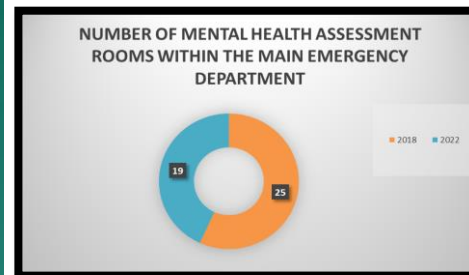
METHODOLOGY

- A Self-assessment audit was completed by 27 hospital emergency departments using the Psychiatric Liaison Accreditation Network (PLAN) clinical standards in Q4 of 2022.
- There are currently a total of 125 standards in the PLAN, 2022 document, of which 12 directly relate to the ED mental health assessment room.
- Supplementary telephone calls and direct observations of the mental health assessment rooms were conducted to confirm accuracy of responses.
- Descriptive analyses were presented based on 2018 and 2022 audit responses and McNemar's uncorrected test was used with significance set at 0.05 and 95% confidence intervals (CIs).



RESULTS

- A dedicated room for mental health assessments was found to be no longer present in eight (30%) hospital EDs, in 2022, which had met this standard at the time of the initial audit in 2018.



DISCUSSION

Our findings reveal a deterioration in the quality of the physical environment for mental health assessments in Irish ED settings, between 2018 and 2022. This change occurred during a period of major reconfiguration of care pathways and physical redesign in response to the Covid 19 pandemic. Our study identifies the need to better integrate mental health care in planning the service response to future public health emergencies. Ensuring the quality of the environment for urgent mental health assessments in ED settings align with Recommendation 22 of Sharing the Vision for better patient outcomes.

- National Institute for Health and Care Excellence. (2022) Self-harm: assessment, management and preventing recurrence. Nice guideline [NG225]. NICE. <https://www.nice.org.uk/guidance/ng225/resources/self-harm-assessment-management-and-preventing-recurrence-pdf-66143837346757>
- Health Service Executive (2022) National Clinical Programme for Self-Harm and Suicidal-related Ideation: Updating the National Clinical Programmes for the Assessment and Management of Patients presenting to the Emergency Department following Self-Harm. Dublin, HSE Clinical, Design and Innovation Office. <https://www.hse.ie/eng/about/who/cspd/ncps/self-harm-suicide-related-ideation/moc/mhncp-self-harm-model-of-care.pdf>
- McAndrew J, O'Leary J, Cotter D, et al. (2021) Impact of initial COVID-19 restrictions on psychiatry presentations to the emergency department of a large academic teaching hospital. Irish Journal of Psychological Medicine. 2021; 38(2):108-115. doi:10.1017/ipm.2020.115



NCP SHI Emergency Department Programme

Delivery of the programme is in all 26 adult Emergency Departments that are open 24/7, and one standalone paediatric hospital.

Operational Guidance Document for the Emergency Department Programme was updated based on the revised Model of Care 2022.

Quarterly Network meetings continue between CNS ED & ADON groups and the NCP SHI national team.

We are working with services to ensure that all Emergency Departments have a suitable room for assessment of people who require a mental health assessment.





Suicide Crisis Assessment Nurse Service

Two CAMHS SCAN and two Adult SCAN posts, allocated from Budget 2024 are progressing with recruitment.

Development of a CAMHS SCAN Operational Guidance Document is currently in development aligning service with the revised Model of Care 2022.

The 2025 Budget includes funding for an additional six SCAN positions, two of which are specifically designated for improving the access to mental health assessments for the traveller community. With a further 2 for Adult and 2 for CAMHS.

The national SCAN steering group continue to meeting on a regular basis.

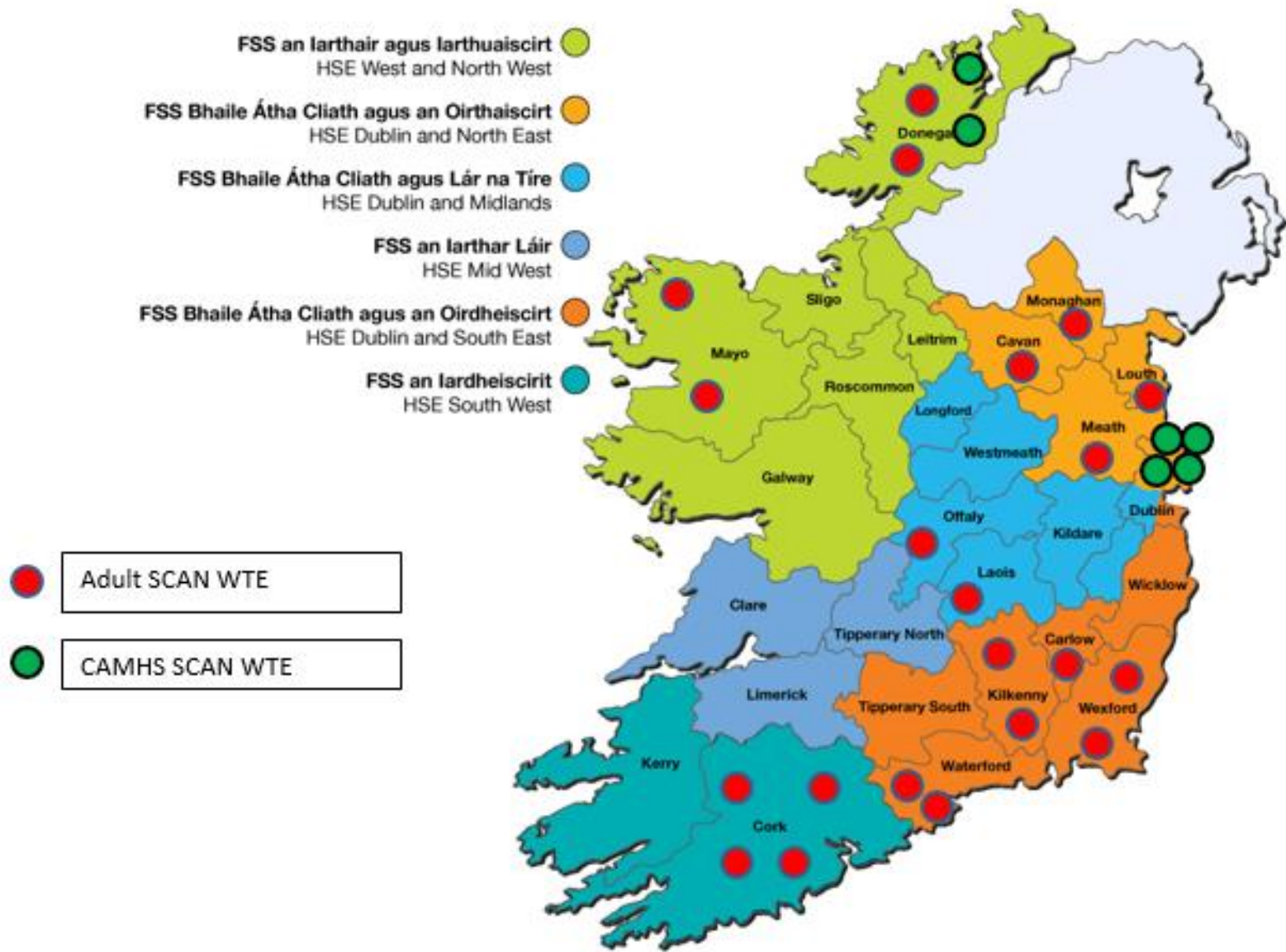
Quarterly Network meetings continue between SCAN CNS & ADON groups and the NCPSHI national team.

The pilot CAMHS SCAN for North Dublin was successful and is now part of operational service and NCPSHI are expanding the national service reach for CAMHS SCAN.

National SCAN database went 'LIVE' on 17th January 2025.



HSE SCAN SERVICE MAP





Integrated Care, Advancing Nursing Practice – The Suicide Crisis Assessment Nurse (SCAN) Service.



Sally Ann Lovejoy National Nurse Lead, Rhona Jennings Programme Manager, Maeve Cosgrove Database Manager, Shane McInerney National Clinical Lead
National Clinical Programme for Self-Harm and Suicidal-related Ideation (NCPSHI)
Email: sally.lovejoy@hse.ie

INTRODUCTION

In 2014, a Health Service Executive (HSE) national programme for Self-harm and Suicide-related Ideation (NCPSHI) was launched to standardise care received by people presenting with self-harm or suicidal ideation to the Emergency Department (ED). In 2022, the scope was broadened to include the governance of the Suicide Crisis Assessment Nurse (SCAN) Service.¹

Clinical Nurse Specialists (CNS) employed by mental health services provides assessments of GP patients experiencing suicidal crisis, aligning with Sláintecare; Right Place, Right Time.



AIM

The aim is to highlight SCAN's innovative approach in advancing integrated care for patients presenting in a suicidal crisis in primary care, demonstrating its impact on improving outcomes through a collaborative, multidisciplinary approach between GPs and mental health services.

CLINICAL COMPONENTS

NCPSHI ensures that people who present following self-harm or with suicide-related ideation received the same care regardless of where they present, based on four clinical components.

RESPONSE
Compassionate
Validating
Empathic

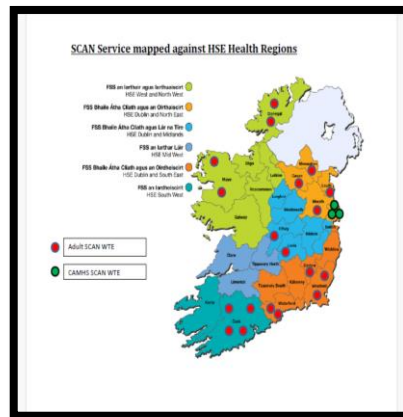
Each person will receive a timely expert biopsychosocial
ASSESSMENT
Expert intervention and a collaborative written safety plan

Every effort is made to ensure
FAMILY CARER
Involvement at assessment and discharge

Each person receives follow up
BRIDGE TO NEXT CARE

The current challenges in healthcare and the need for an integrated community approach which aligns with HSE Connecting for Life and Sláintecare policies, ensuring a faster prognosis and targeted treatments as patients can be assessed in primary care rather than secondary care or EDs, improving the quality-of-life for those in crisis and diverting care away from busy ED if not required to be there.

OUTCOMES



There are 22 WTE SCAN posts nationally of which 3 are dedicated for CAMHS SCAN. In addition there are a further 4 WTEs (2 Adult and 2 CAMHS currently in recruitment). Funding from Budget 2025 has proposed an additional 6 posts of which 2 are dedicated to improving the health outcomes of the Irish traveller community.

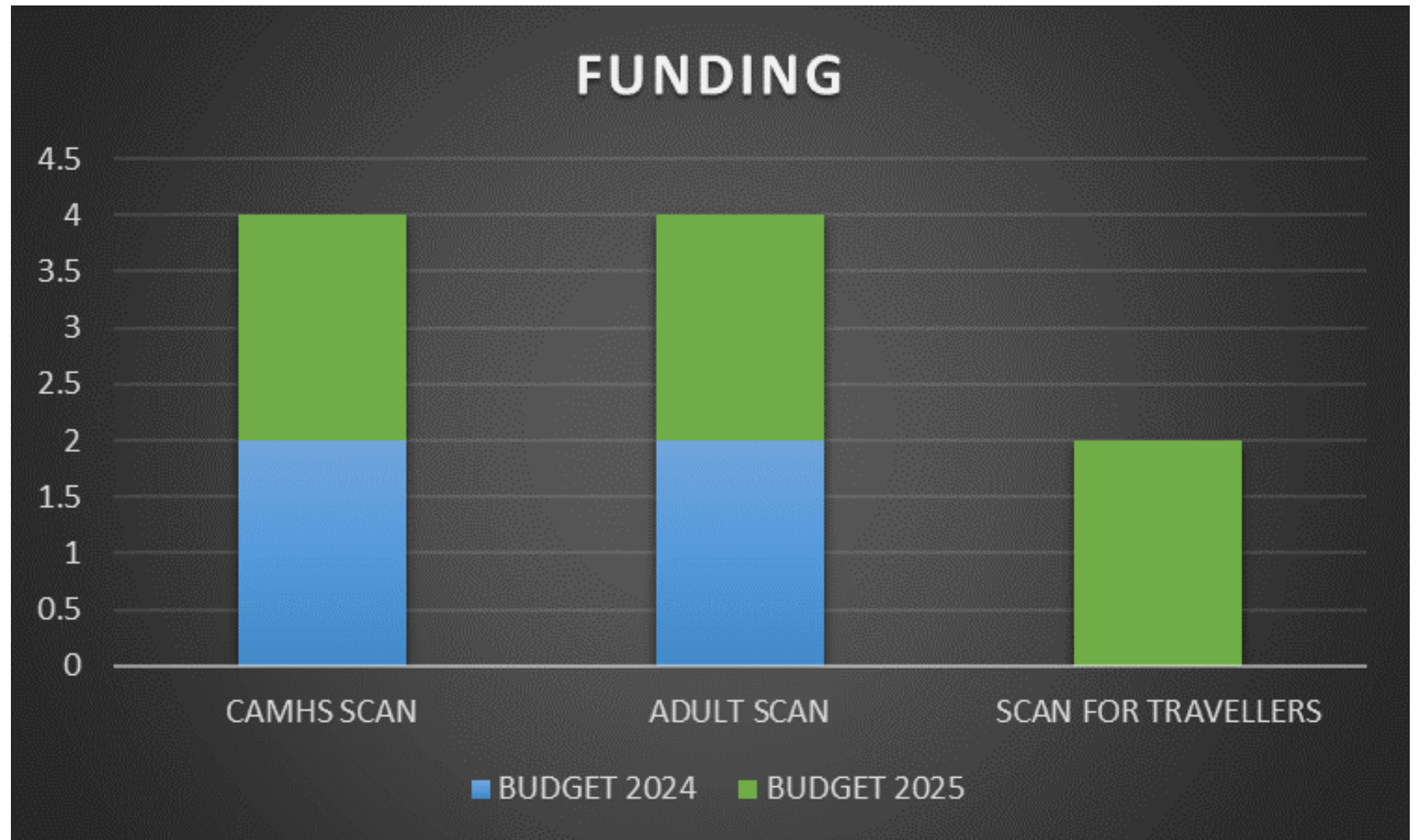


A cornerstone of NCPSHI is its data collection system, which plays a pivotal role in evaluating and improving care provided. In January 2025, NCPSHI launched a national Cloud-Based Electronic Data Capture (EDC) Management System, which aims to collect pseudo-anonymised presentation data. The shift to a cloud-based system will significantly enhance clinician data capture workflow and improve data integrity, security and reliability.

FUTURE PLANS AND RECOMMENDATIONS

There is an urgent need for the national implementation and funding support of the SCAN service to ensure equitable access for all patients experiencing a suicidal crisis presenting to general practice and primary care settings.

¹ Health Service Executive (2022) National Clinical Programme for Self-Harm and Suicidal-related Ideation; Updating the National Clinical Programmes for the Assessment and Management of Patients presenting to the Emergency Department following Self-Harm. Dublin, HSE Clinical, Design and Innovation Office.
<https://www.hse.ie/eng/about/who/cspd/npcs/self-harm-suicide-related-ideation/moc/mhncp-self-harm-model-of-care.pdf>





Data Driven Success

Database Update: 2023 submissions

Database last updated
October 2023

Review of unprocessed
submissions completed

26 of 27 ED services
submitted data to the
NCPSHI in 2023

25 services – full
submission
1 service 6 months only

Data cleaning to be
finalized
n ~ 18k presentations

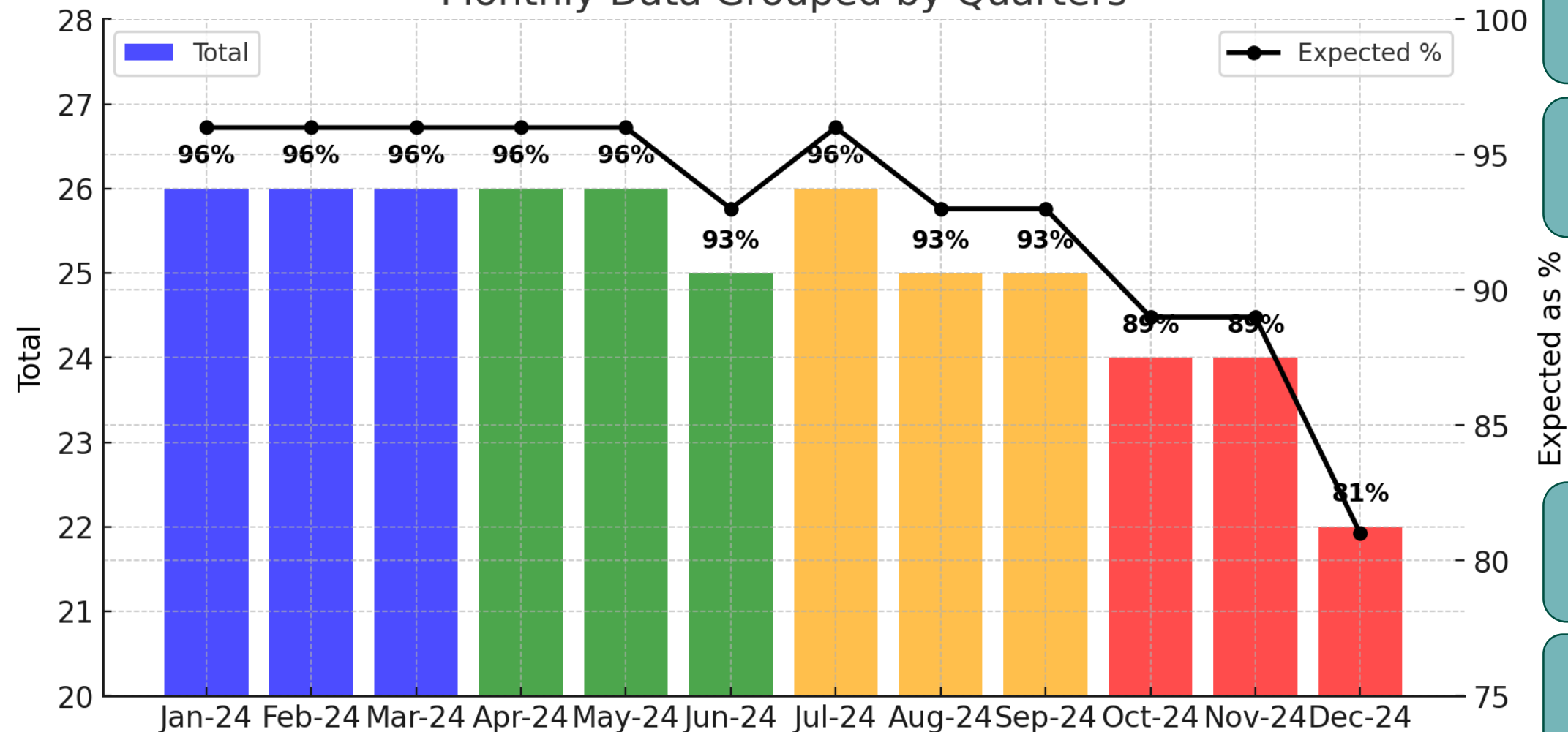
Analysis and reporting
due end Q1 2025



2024 Submissions (27 ED hospital sites) – ongoing

n ~ 18.5k presentations

Monthly Data Grouped by Quarters



21 sites:
12 months

1 site:
6 months only

3 sites:
Submissions to
be completed

2 sites:
incomplete



SCAN Database

CASTOR EDC

Cloud-Based Electronic Data Capture (EDC) Management System

Advantages:

- Enhanced **End-User Experience**
- **Customizability**: tailored to fit NCP SHI needs
- **Built-In Validation**: ensures data accuracy and consistency
- Real-Time **Query Resolution**
- Improved **Data Quality**
- **Unlimited users**: Multiple users can access and work on the platform simultaneously
- **Secure** Data Management: Robust data encryption and compliance





SCAN Database Development

- Initial usability testing completed
 - Technical “bug” fixes
 - Additional items added based on feedback

Pilot Q4 2024

- **Pilot Completion:** 6 end users
- **Feedback Review:** Collected, analysed, and reviewed input
- **Data Entry Form:** Finalised based on feedback and pilot findings

Rollout 2025

- **User Manual:** Development completed
- **Training:** Delivered to 16 Scan (14 sites)
- **Go-Live:** data collection launched 17 Jan
- **Future Rollout:** expansion to other sites including ED services – tbc

“Overall I found Castor was easy to use for the first time, no concerns re the use of it.”

SCAN 25/11/2024

CASTOR Implementation

How long does it take to enter the data?

7 min

SCAN
22/11/2024

5 min

SCAN
21/11/2024





2024 ED Data Training Summary

• Data Clinics for ED Data Collection

Offered as drop-in sessions and successfully engaged multiple sites

- 24/04/2024 – 6 CNS from 4 ED sites attended
- 01/05/2024 – 2 CNS from 2 ED sites attended
- 08/05/2024 – 3 CNS from 2 ED sites attended

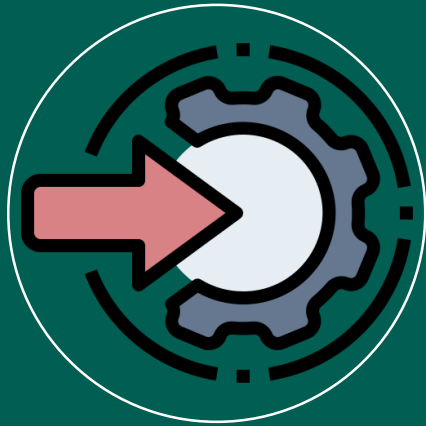
• New Starter ED Data Entry Training

Conducted on demand when new starters are identified

- July – 2 CNS from 1 ED site
- August – 1 CNS from 1 ED site
- September – 3 CNS from 2 ED sites
- October – 1 CNS from 1 ED site



Implementation Advisory Group



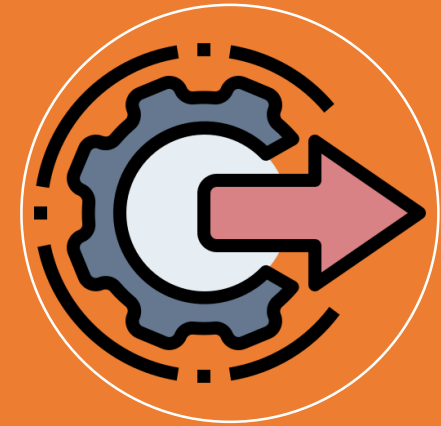
INPUTS

The group membership consists of the NCPSHI team, Consultant in Emergency Medicine Area DON, ADON ,ECD, CNS ED, Heads of Service, Experts by experience, Consultant in Old Age Psychiatry, Clinical Director CAMHS, SCAN nurses, Consultant psychiatrist Drug and alcohol, Social Worker NSRF



PROCESS

The group meets quarterly to advised NCPSHI on the complete implementation of Model of Care, ensuring the mainstreaming and sustainability into mental health operations, ensuring standards are maintained and evaluated.



OUTPUTS

Approved Guidance
revised Document
Operational for presentations to the ED.
Guided Audit of Mental health assessment rooms in EDs.
Guided Training, data collection, recruitment and research





Research Outputs

Irish Journal of Psychological Medicine (2024), 1–2
doi:10.1017/ijpm.2024.42



ORIGINAL RESEARCH



OPEN ACCESS

Factors affecting implementation of a National Clinical Programme for self-harm in hospital emergency departments: a qualitative study

Selena O'Connell ,^{1,2} Grace Cully ,^{1,2} Sheena McHugh ,¹ Margaret Maxwell ,³ Anne Jeffers,⁴ Katerina Kavalidou,^{2,4} Sally Lovejoy ,⁴ Rhona Jennings,⁴ Vincent Russell ,^{4,5} Ella Arensman,^{1,2,6} Eve Griffin ,^{1,2}

Archives of Suicide Research



ISSN: (Print) (Online) Journal homepage: <https://www.tandfonline.com/loi/usui20>

Patterns of Hospital Presenting Suicide-Related Ideation in Older Adults before and during COVID-19: Findings from a National Clinical Service in Ireland 2018-2021

M. Isabela Troya, Paul Corcoran, Ella Arensman & Katerina Kavalidou

To cite this article: M. Isabela Troya, Paul Corcoran, Ella Arensman & Katerina Kavalidou (25 Jan 2024): Patterns of Hospital Presenting Suicide-Related Ideation in Older Adults before and during COVID-19: Findings from a National Clinical Service in Ireland 2018-2021, Archives of Suicide Research, DOI: [10.1080/13811118.2024.2307882](https://doi.org/10.1080/13811118.2024.2307882)

To link to this article: <https://doi.org/10.1080/13811118.2024.2307882>

Letter to the Editor

Mental health assessment rooms within Irish hospital emergency departments before and after COVID-19 restrictions

Sally Ann Lovejoy¹ , Katerina Kavalidou^{1,2}, Rhona Jennings¹ and Vincent Russell^{1,3}

¹Health Service Executive, National Clinical Programme for Self-Harm and Suicidal-related Ideation, Dublin, Ireland, ²National Suicide Research Foundation, University College Cork, Cork, Ireland and ³RCSI University of Medicine and Health Sciences, Dublin, Ireland

Received: 30 August 2023 | Accepted: 17 June 2024

DOI: 10.1002/gps.6116

RESEARCH ARTICLE



Healthcare practitioners' views of self-harm management practices in older adults in Ireland: A qualitative study

M. Isabela Troya^{1,2} | Caoimhe Lonergan³ | Eugene Cassidy³ | Eve Griffin^{1,2} | Sally Ann Lovejoy⁴ | Faraz Mughal⁵ | Vincent Russell⁴ | Ella Arensman^{1,2,6}

Training and Education



Tuesday 22nd October 2024

NCPSHI Annual In-person Education and Training Event

NCPSHI held its annual in-person education and training event for the 2024 in The Sheraton Hotel, Athlone. Mental Health teams from across the HSE, that are implementing the NCPSHI in the ED and across primary care attended.

Over 65 clinicians from a variety of disciplines joined on day.

Safety Planning, service development and show casing good practice were some of the topics of the event.

Training and Education



Monthly online Education Sessions

The organisations we partnered with



Trinity College Dublin
Coláiste na Tríonóide, Baile Átha Cliath
The University of Dublin



Belong To LGBTQ+
Youth Ireland



**UNIVERSITY OF
LIMERICK**
OLLSCOIL LUIMNIGH



**LGBT
IRELAND**

For Inclusion
For Equality
For Everyone



Thank you and we look forward to continuing
the work in 2025