



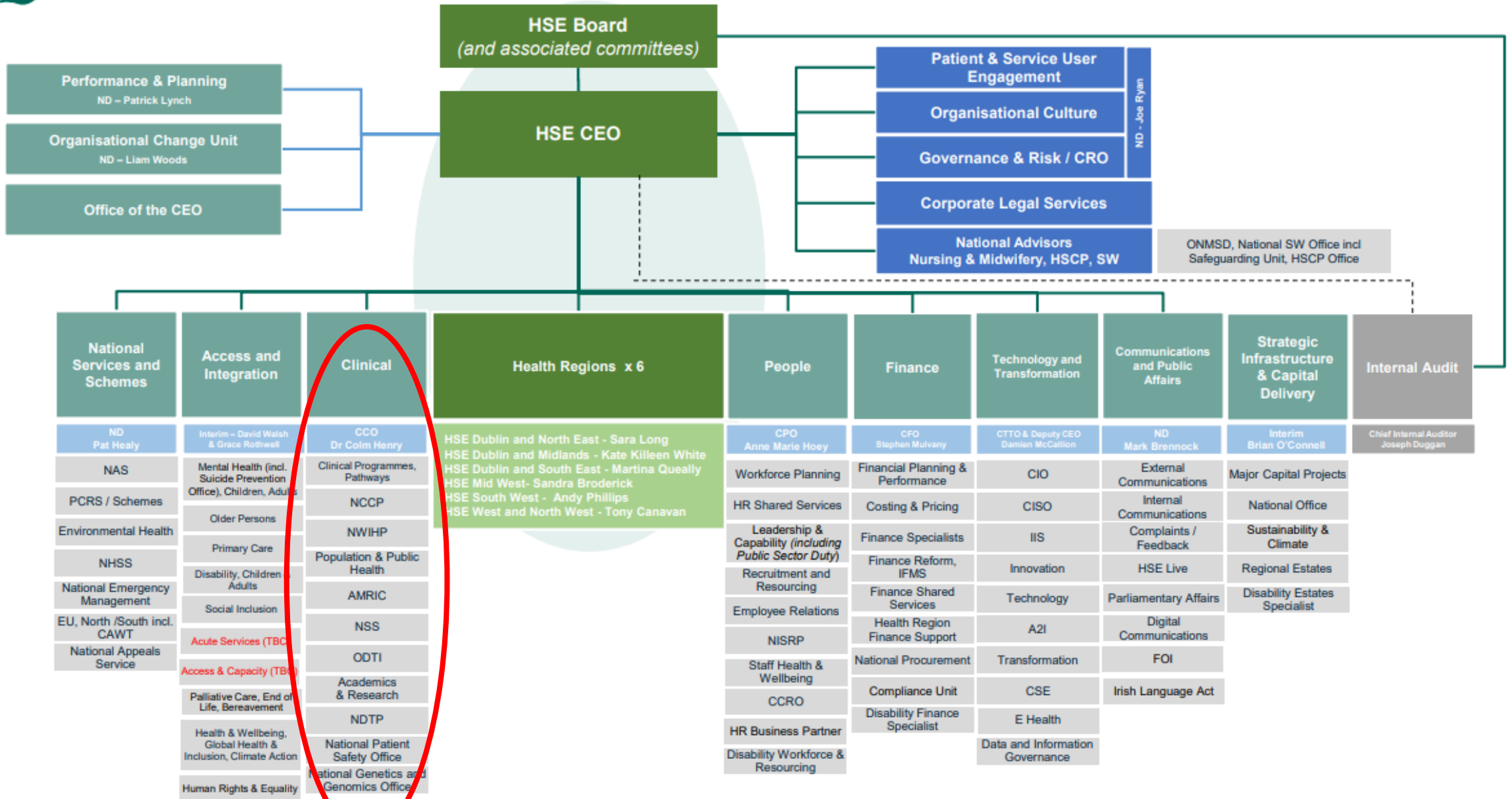
# **Clinical Design in our New Health Service Structures**

Dr. Siobhán Ni  
Bhriain

National Clinical  
Director for  
Integrated Care



# HSE Centre: New Structure





# NCP Evolution: Milestones



**2009**

Clinical Strategy & Programmes Division, HSE

**2010**

Establish National Clinical Programmes

**2015 - 6**

Establish ICPs  
Sláintecare  
NCAGL roles

**2017**

Process evaluation of NCPs-structural changes, education for NCP teams, monitoring and evaluation

**2021**

HSE CEO CCR:  
Alignment of NCAGLs to NCD, Integrated Care

**2022**

SCTP - MCP governance, Draft New Approach to MoCs

**2024**

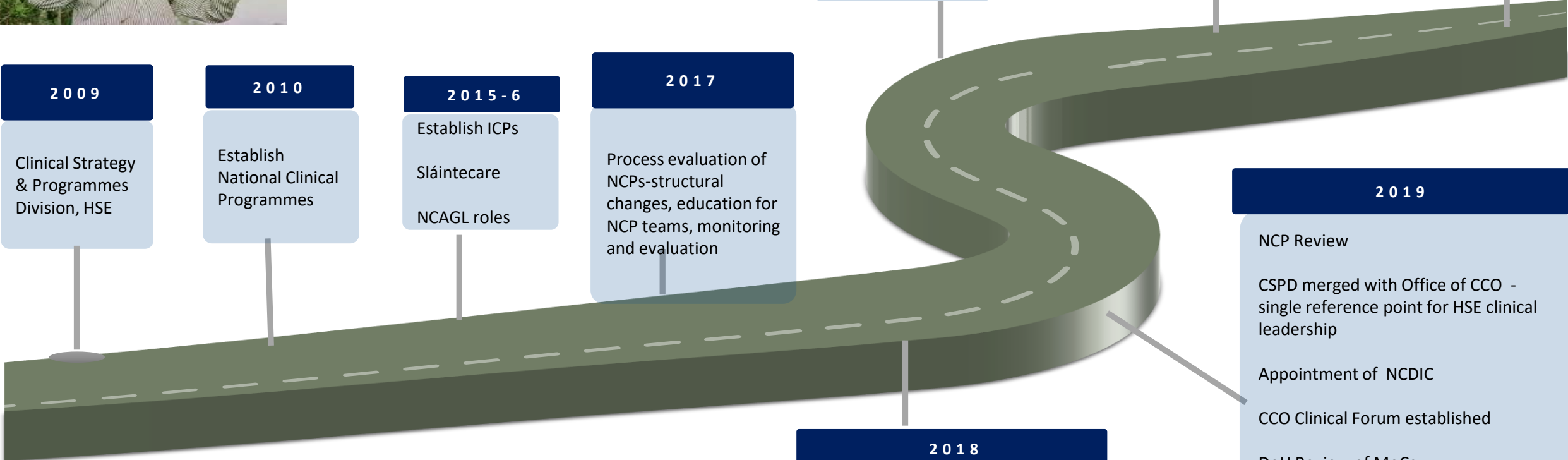
HSE Centre Review; REOs, HRs  
HSI – Public Health, MoC Commissioning

**2018**

Office of the CCO stood up

**2019**

NCP Review  
CSPD merged with Office of CCO - single reference point for HSE clinical leadership  
Appointment of NCDIC  
CCO Clinical Forum established  
DoH Review of MoCs  
SIIF projects stream commenced





# What is Clinical Design

---

**Expert** clinical leadership, advice & guidance

---

**Prioritisation** of clinical design needs

---

**Integrated** care approach

---

**Evidence-based**

---

**Person-centred** care

---

**Consultative**

---

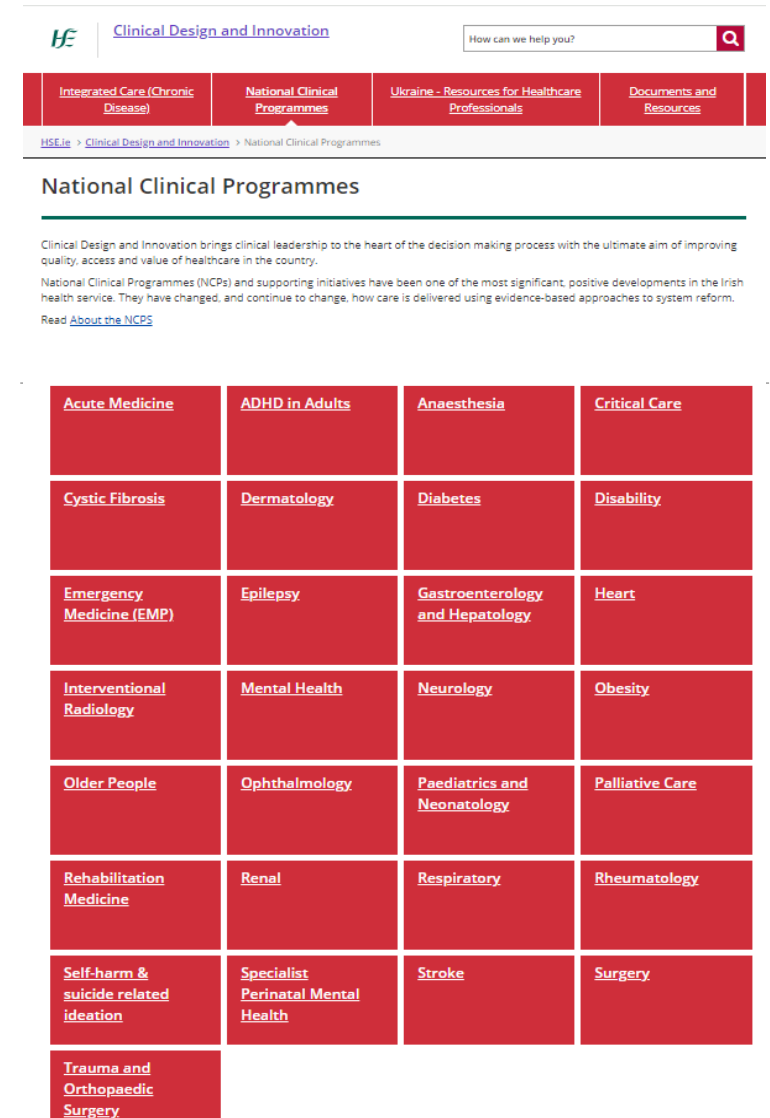
Independently **validated and approved** standards, guidance and models



# National Clinical Programmes (NCP)

National Clinical Programmes define how we deliver healthcare in Ireland and implement national reform.

They bring **MDT clinical leadership** to heart of decision-making processes, leveraging research, data and evidence-based insights from across the system



The screenshot shows the HSE Clinical Design and Innovation website. At the top, there is a navigation bar with the HSE logo, the text 'Clinical Design and Innovation', and a search bar. Below the navigation bar, there are four main menu items: 'Integrated Care (Chronic Disease)', 'National Clinical Programmes', 'Ukraine - Resources for Healthcare Professionals', and 'Documents and Resources'. The 'National Clinical Programmes' menu item is highlighted. Below the navigation bar, there is a breadcrumb trail: 'HSE.ie > Clinical Design and Innovation > National Clinical Programmes'. The main heading is 'National Clinical Programmes'. Below the heading, there is a short paragraph explaining the role of Clinical Design and Innovation and a link to 'Read About the NCPs'. The main content is a grid of 36 red boxes, each containing the name of a National Clinical Programme. The grid is organized as follows:

Acute Medicine	ADHD in Adults	Anaesthesia	Critical Care
Cystic Fibrosis	Dermatology	Diabetes	Disability
Emergency Medicine (EMP)	Epilepsy	Gastroenterology and Hepatology	Heart
Interventional Radiology	Mental Health	Neurology	Obesity
Older People	Ophthalmology	Paediatrics and Neonatology	Palliative Care
Rehabilitation Medicine	Renal	Respiratory	Rheumatology
Self-harm & suicide related ideation	Specialist Perinatal Mental Health	Stroke	Surgery
Trauma and Orthopaedic Surgery			

[hse.ie/clinicaldesignandinnovation](https://hse.ie/clinicaldesignandinnovation)

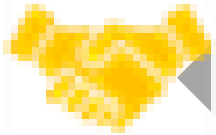


# NCP Core Aims



To improve access to expert care

Improve patient experience and quality of care through design of **standardised models of care** implemented throughout the Irish healthcare system



To improve quality of care across healthcare spectrum

Our approach of **optimising health system performance** is centred on Quintuple Framework, through activities centred on improving quality, access and value.



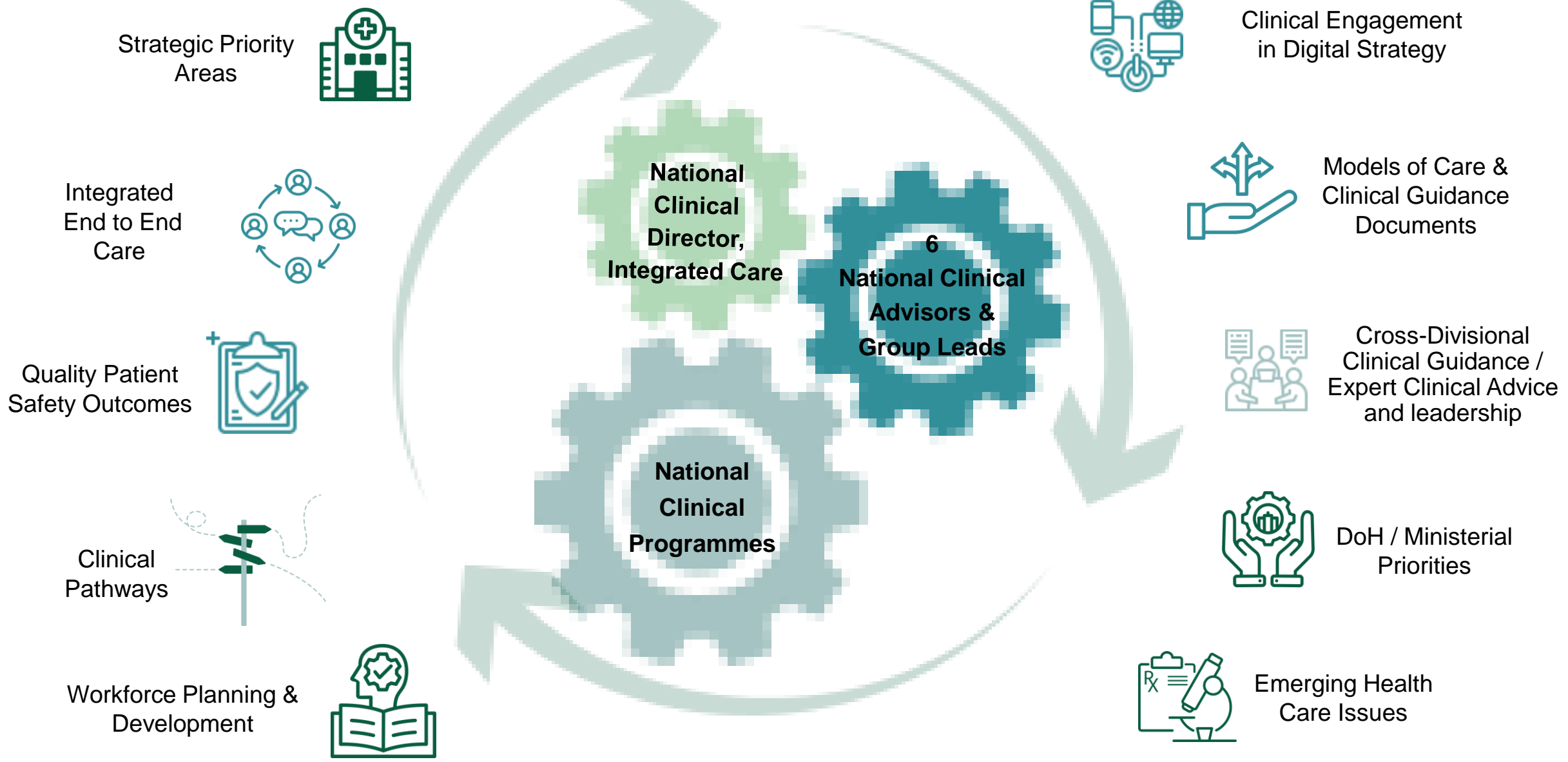
To improve value-conscious care, aligned to Slaintecare

Initiatives priority-led and strive to be impactful on **patients' experience** and **access** to healthcare, providing **value for money**

**Evidence base** of best care practices through **data driven** models of care on how care can best be operationalised and planned within health service.



# Clinical Design & Innovation (CDI)



Strategic Priority Areas



Clinical Engagement in Digital Strategy

Integrated End to End Care



Models of Care & Clinical Guidance Documents

Quality Patient Safety Outcomes



Cross-Divisional Clinical Guidance / Expert Clinical Advice and leadership

Clinical Pathways



DoH / Ministerial Priorities

Workforce Planning & Development



Emerging Health Care Issues

National Clinical Director, Integrated Care

6 National Clinical Advisors & Group Leads

National Clinical Programmes



# NATIONAL CLINICAL PROGRAMMES & SERVICE IMPROVEMENT PROJECTS

## NCAGL Acutes

- Acute Medicine
- Anaesthesia
- Cardiothoracic Surgery
- Critical Care
- Cystic Fibrosis
- Emergency Medicine
- Gastroenterology & Hepatology
- Infectious Diseases
- Interventional Radiology
- Neurology
- Prevent
- Renal
- Rheumatology
- Surgery
- Trauma & Orthopaedics
- VTE

## NCAGL Mental Health

- Self Harm
- Early Intervention in Psychosis
- Eating Disorders
- Dual Diagnosis
- ADHD
- Specialist Perinatal Mental Health SI

## NCAGL Children and Young People

- Children (incorporating Paediatric Diabetes)
- Gender Health
- National Rare Diseases Office (in transition)

## NCAGL Primary Care

- Dermatology
- Disability
- Ophthalmology
- Health A – Z

## NCAGL Chronic Disease

- Diabetes
- Respiratory (COPD & Asthma)
- National Heart
- Obesity

## NCAGL Older Persons

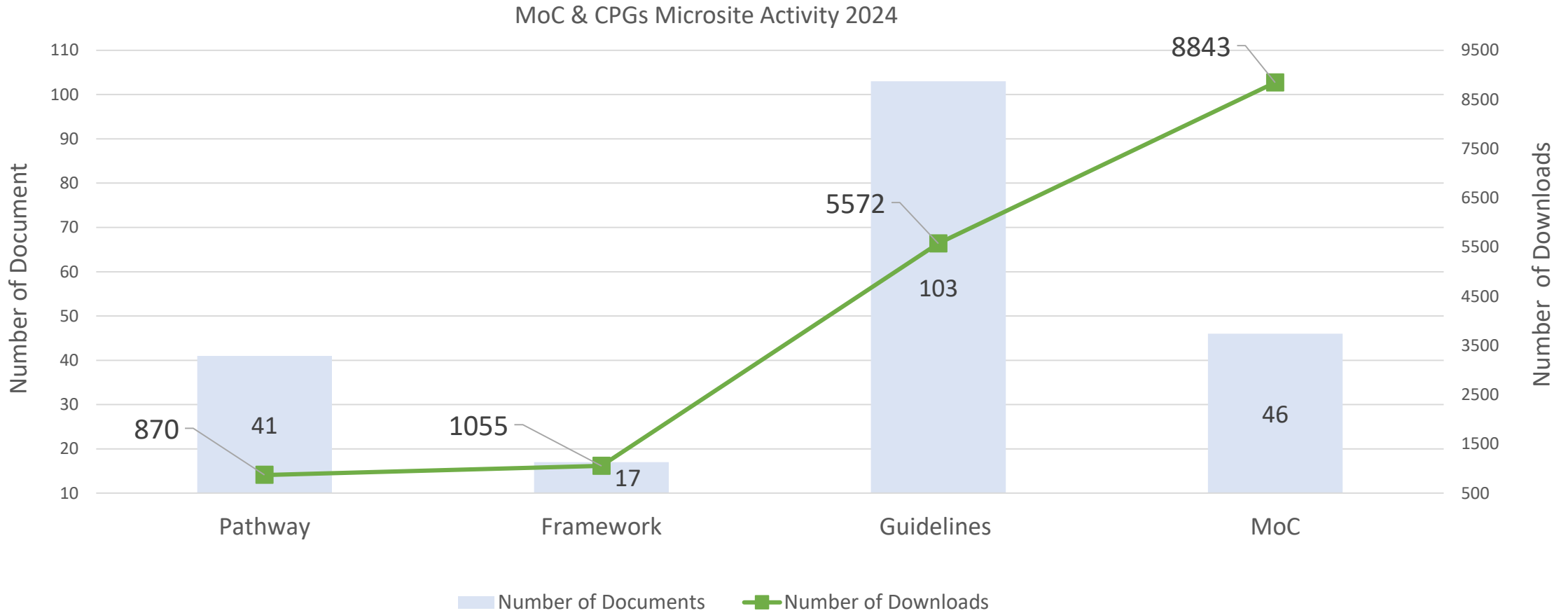
- Older People
- Stroke
- Rehab Medicine
- Palliative Care





# Models of Care, Guidelines, Pathways and Frameworks

## - Number of documents and downloads from the CDI microsite





# Expert Clinical Advice & Guidance



## Emergent work:

- Clinical advice / guidance
- Clinical representation

For example:

Minor Ailment Scheme / Free Contraception Scheme

Assisted Dying

HIQA

ADMA and Mental Health Legislation

Stroke Strategy

Covid Response-open access guidance for HCWs

Enhanced Community Care

Virtual Fracture Clinic/MSK

Theatre Transformation Programme

Patient Initiated Review

# HE Challenges

- Secondments to NCPs
- Pilots & scaling
  - Financial constraints => inequity
  - Oversight / monitoring
- Resourcing
- Availability of workforce
- Implementation – fidelity to models





# New Challenges and Opportunities

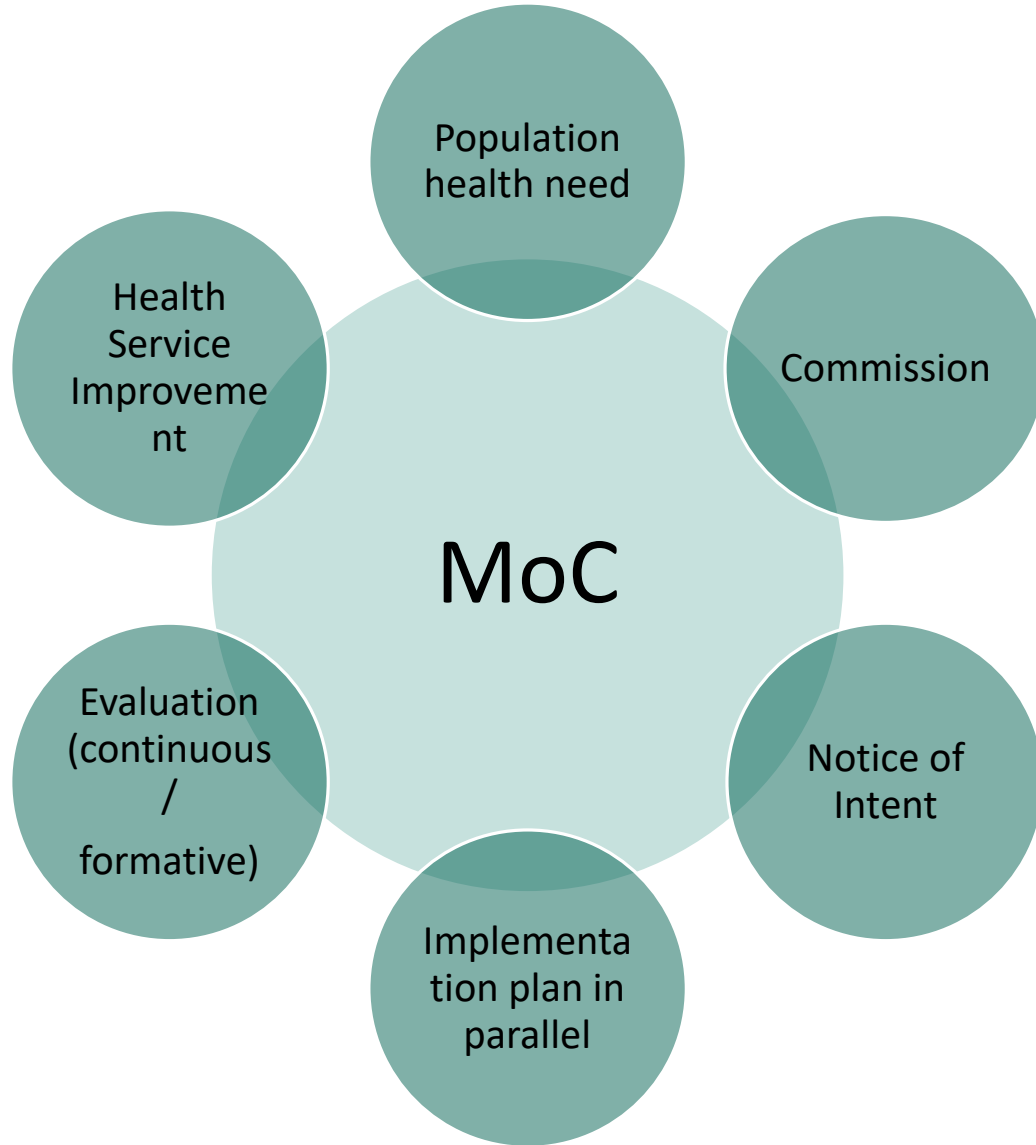
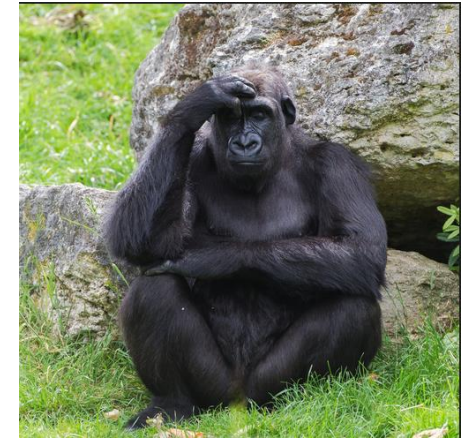
- Providing **national** guidance
- Achieving **standardised** care across Ireland
- **Equitable** implementation
- Wide **Stakeholder** involvement, support REOs, RCDs, Regional Chief Nurse and clinical community
- Supporting **Population-Based Health** Service Delivery

# HE Solutions

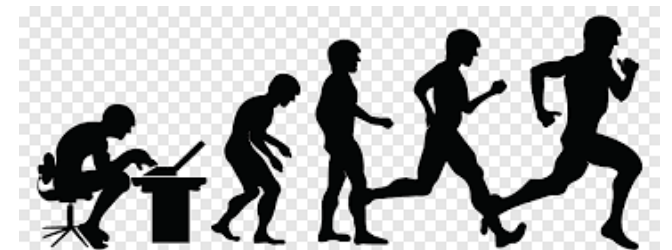
- Engagement - using clinical expertise to solve clinical challenges
  - Wide stakeholder involvement
  - Evidence base
- Communication
  - Mechanisms to raise challenges and cascade guidance / MoC / pathways etc
- Networks of Care
- Shared Learning - research and improvement projects
- .....



# HE Model of Care (MoC)

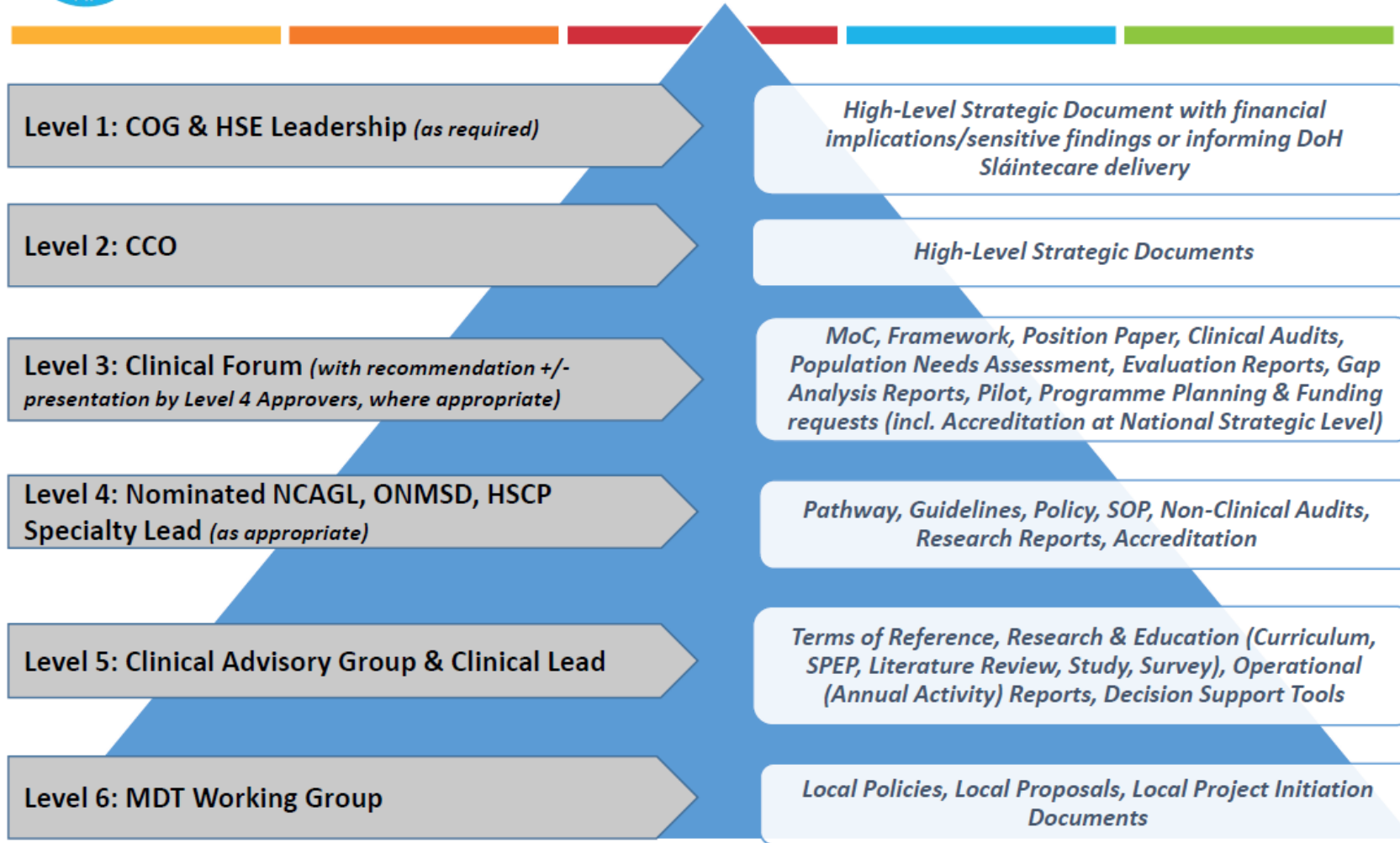


- The NCPs have evolved over 14 years
- Key is to learn from the past and look to the future





# Document Approval - Hierarchy of Compliance V02



*\*A document can be escalated by the assigned approvers to a higher approval level, where deemed appropriate*

*\*\*Where one document conflicts with another document placed higher in hierarchy, the higher placed document takes precedence*

Version 2 Hierarchy effective/go-live from 25<sup>th</sup> October 2019



---

**Go Raibh Míle Maith Agaibh**