



Health Regions: Clinical Design in our New Health Service Structures

Health Regions Programme Update

18th September



Agenda

- Health Regions Strategic Objectives and Health Regions Programme Progress to Date
- Integrated Care
- HSE Structures
- Proposed Regional Patient and Service User Partnership Structures
- HSE Health Regions webinar



Health Regions Strategic Objectives

1. Align and integrate **hospital-based** and **community-based services** to deliver joined-up, **integrated care** closer to home

3. Support a **population-based approach** to service planning and delivery which aims to address **health inequalities**

5. Run an **efficient, highly productive, and transparent** health and social care service with aligned incentives to provide people with **timely access to safe, high-quality, integrated care**

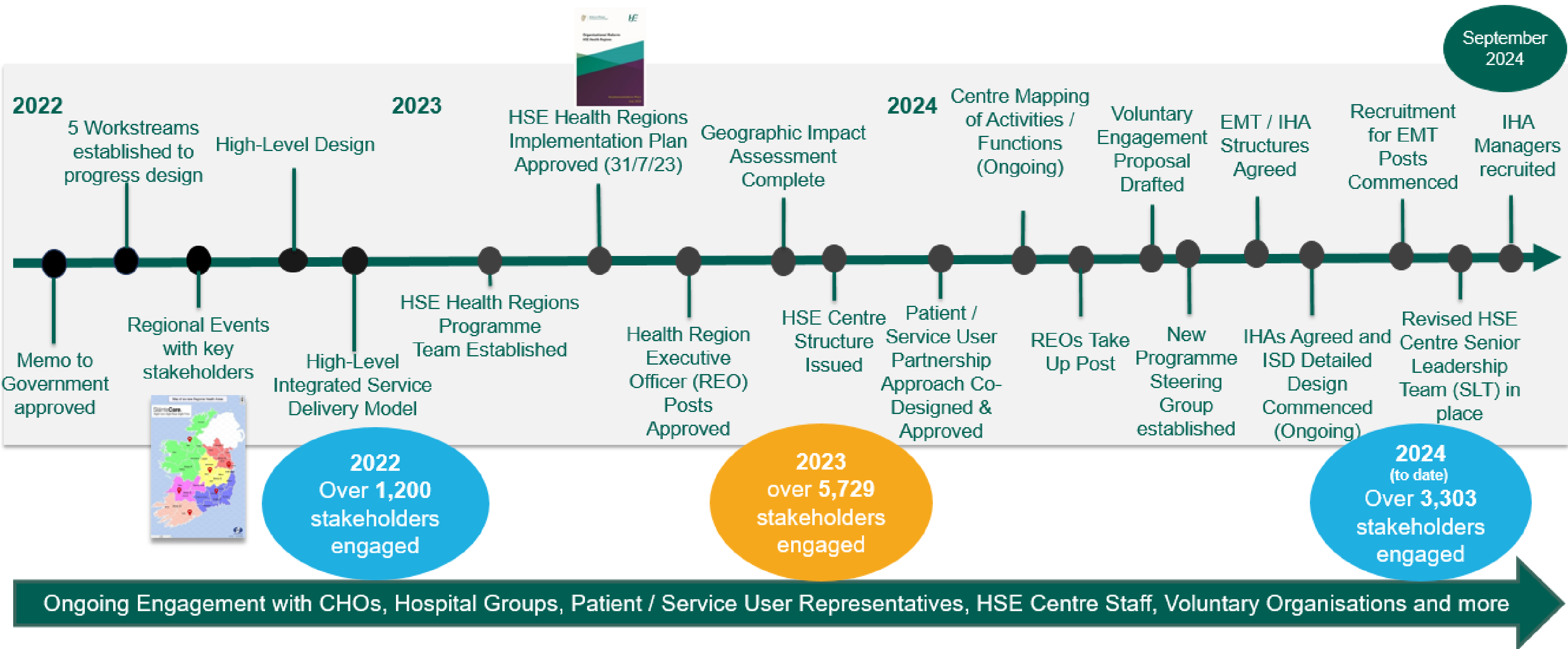
2. Clarify and strengthen **corporate and clinical governance** and accountability at all levels

4. Improve equitable regional investment and balance **national consistency** with appropriate **local autonomy** to maintain consistent quality of care across the country



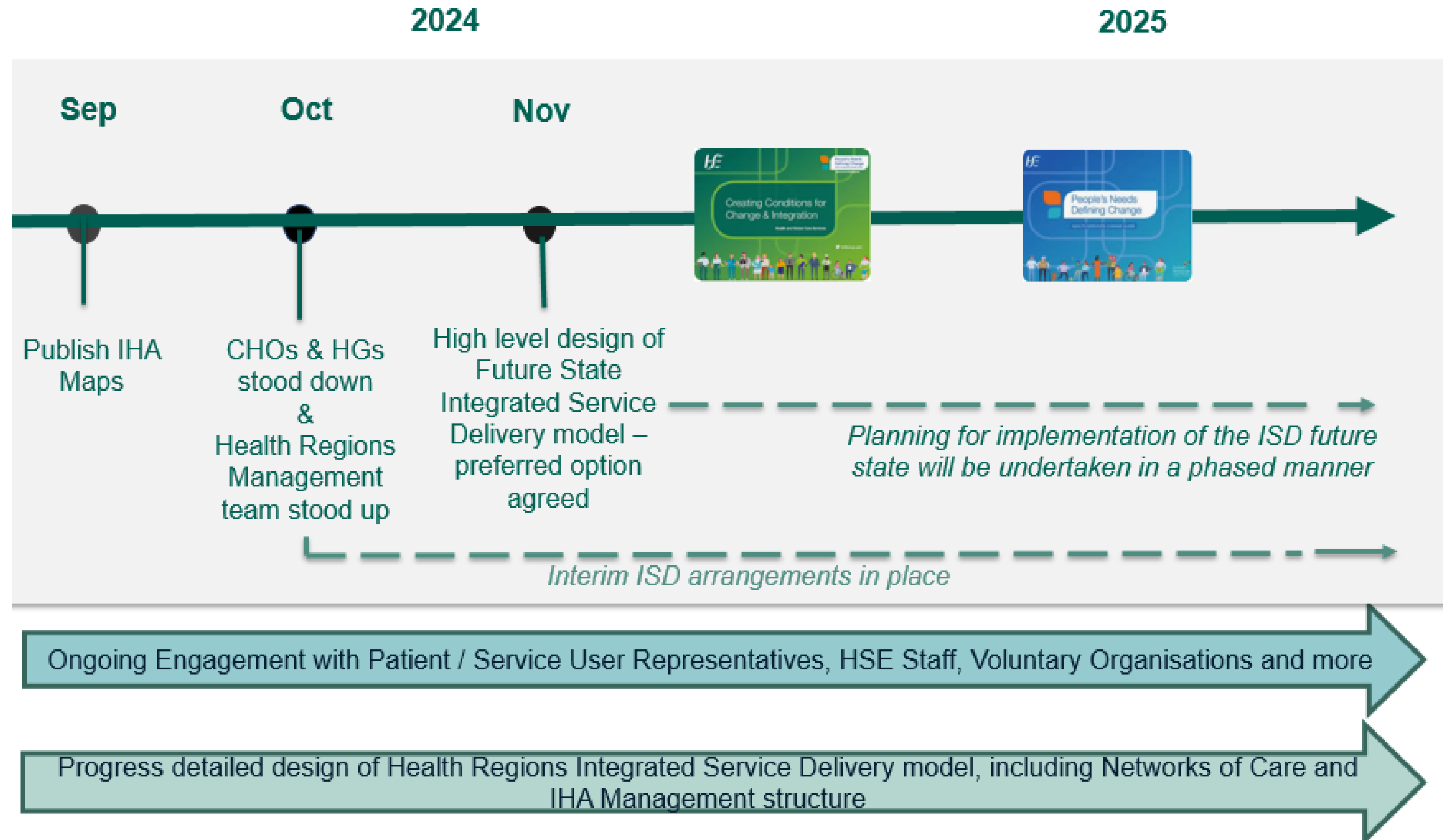


Health Regions Programme – Progress to Date





Health Regions Programme – key upcoming milestones





What's Decided?

We will still be a single HSE organisation with 6 health regions. Services will be integrated across hospitals and community in these health regions. Health Regions are not separate statutory bodies.



- Health Regions will use the HSE logo and be under the governance of the HSE Board
- Regional Health Forum structure to remain but will be aligned to Health Regions
- On October 1st, the Health Region management structure will replace existing CHO and HG management structures
- Operational focus to move from HSE Centre to the Health Regions and Integrated Healthcare Areas (IHAs).
20 IHAs have been agreed as geographic sub-components of the Health Regions. The IHAs will have responsibility for operational service delivery and driving integrated care for patients and service users.
- HSE Centre will develop and oversee standards and guidelines for implementation at regional level. The focus of HSE Centre will be on planning, enabling, performance and assurance
- The HSE Centre and Health Regions structures have been agreed



What is Integrated Care?

Integrated care is where people can access the right care, at the right time, in the right place, with the right team.

Designed first and foremost around the needs of the person, integrated care has the dual aim of improving both system efficiency and service user experience and outcomes

In the Sláintecare Report (May 2017) the Committee on the Future of Healthcare defined integrated care:

“Healthcare delivered at the lowest appropriate level of complexity through a health service that is well organised and managed to enable comprehensive care pathways that patients can easily access and service providers can easily deliver. This is a service in which communication and information support positive decision-making, governance and accountability; where patients’ needs come first in driving safety, quality and the coordination of care.”



IFIC Pillars of Integrated Care



The Nine Pillars of Integrated Care
International Federation of Integrated Care



Sláintecare Vision for Integrated Care



SláinteCare.
Right Care. Right Place. Right Time.

our health system



HSE Sub-structures

1

HSE

6

**HEALTH
REGIONS**

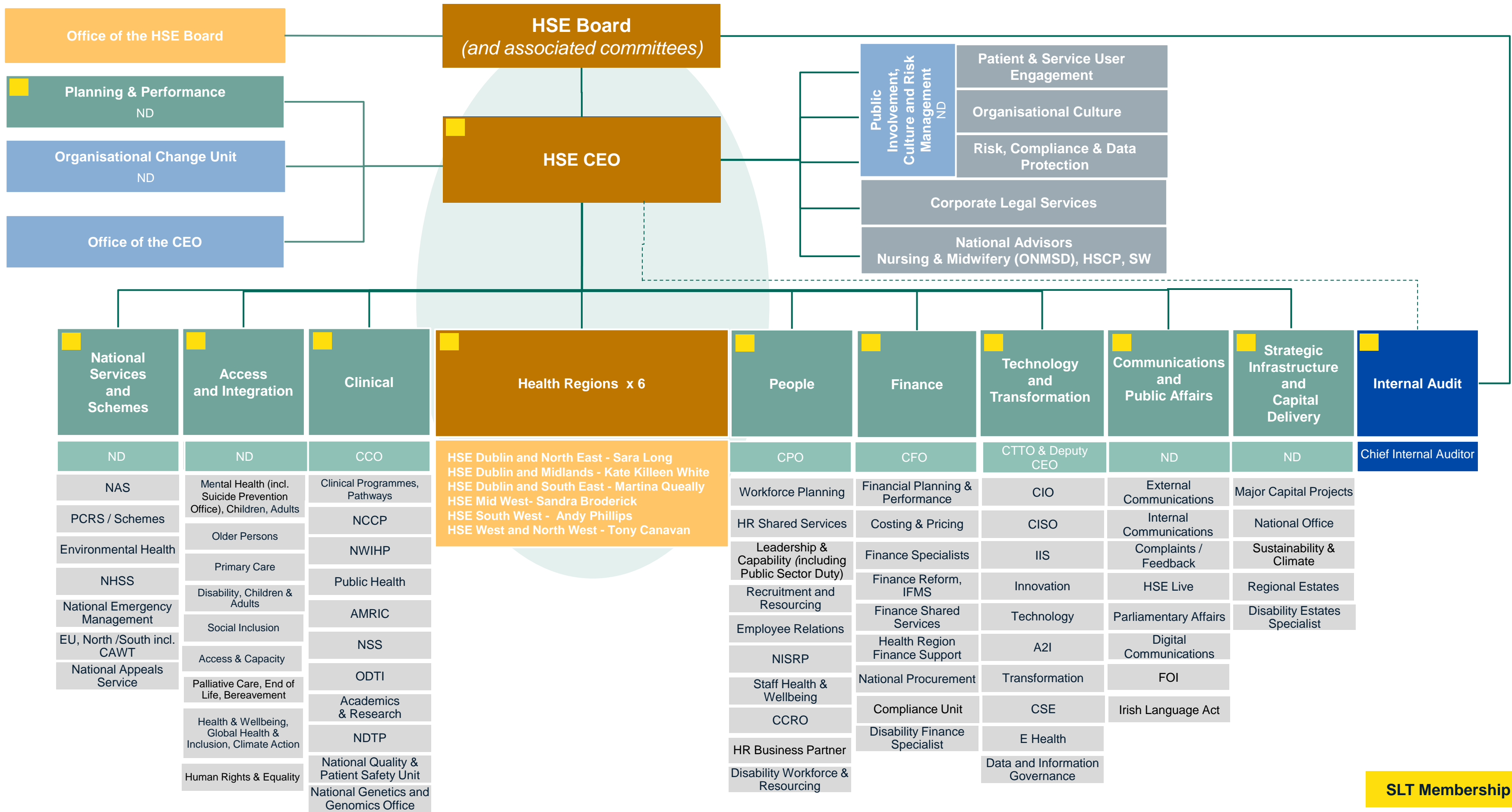
20

**INTEGRATED
HEALTHCARE
AREAS**

96

**COMMUNITY
HEALTH
NETWORKS**

DRAFT HSE Centre New Structure



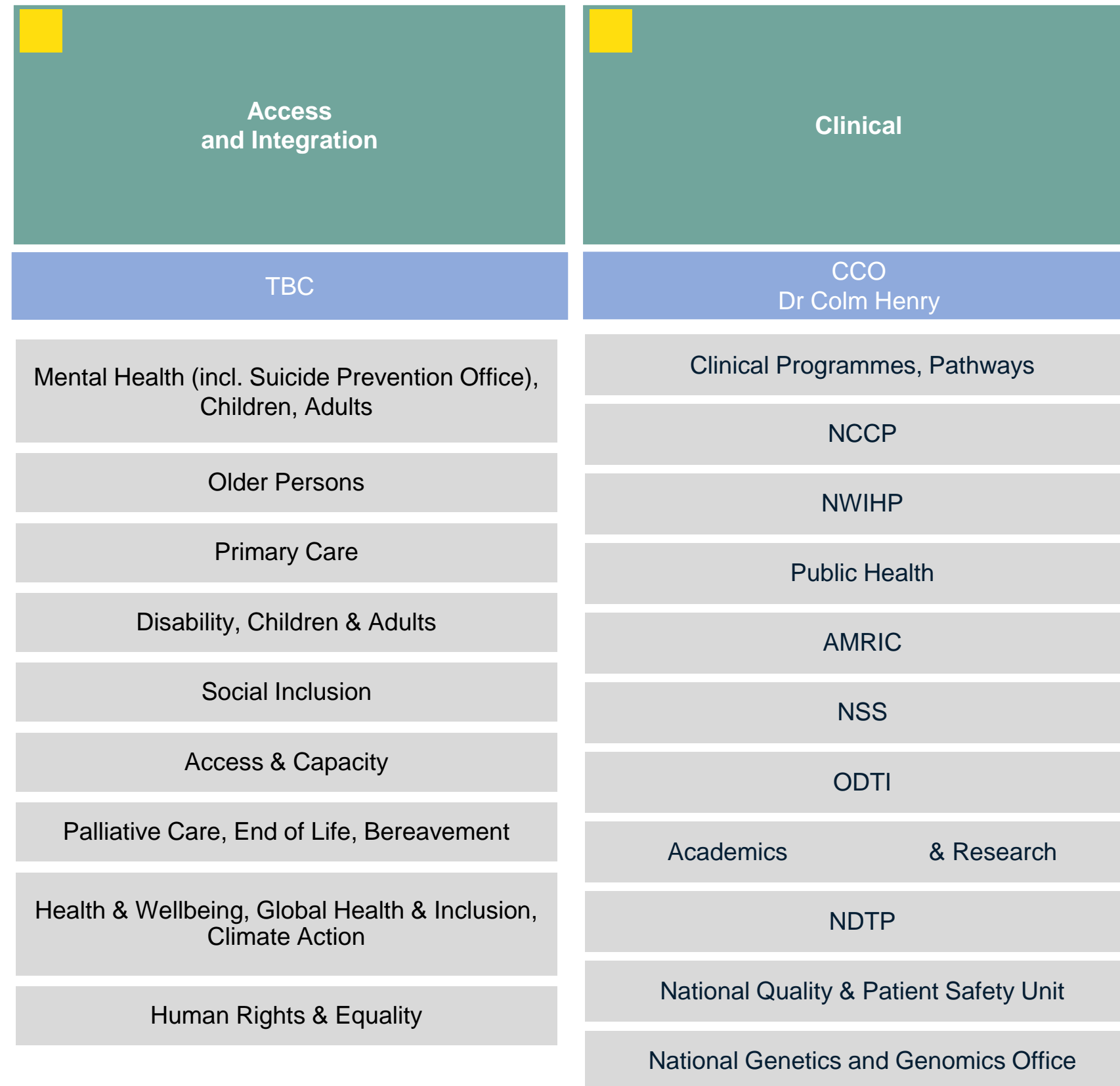
SLT Membership



- ND post for Access & Integration and Strategic Infrastructure & Capital Delivery in recruitment phase. Grace Rothwell (Acute Operations), David Walsh (Community Operations) & Brian O'Connell (Head of Capital & Estates) attending SLT in interim until ND Access & Integration and Strategic Infrastructure & Capital Delivery positions filled.
- Some functions (grey boxes) to be finalised

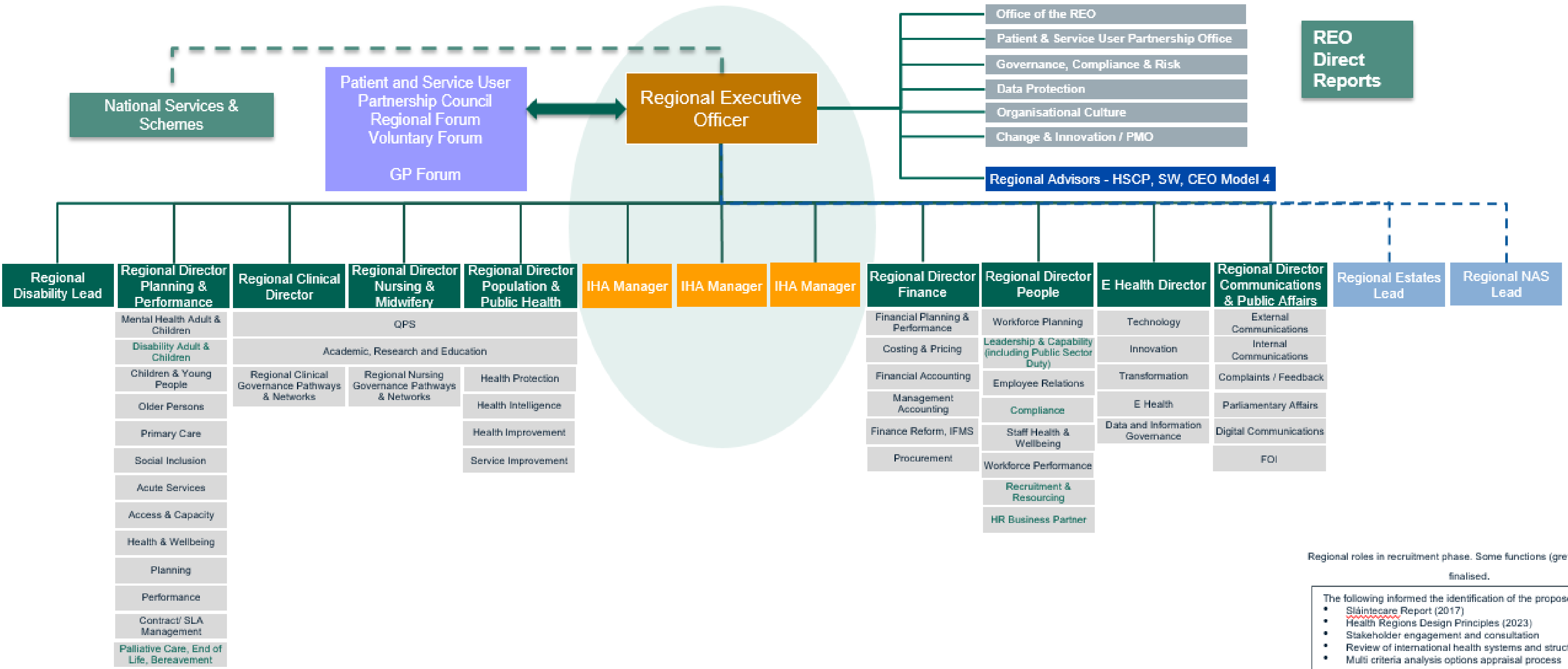


HSE Centre: A&I and Clinical Structures





HSE Health Region EMT



Regional roles in recruitment phase. Some functions (grey boxes) to be finalised.

- The following informed the identification of the proposed option:
- [Slaintecare Report \(2017\)](#)
 - [Health Regions Design Principles \(2023\)](#)
 - Stakeholder engagement and consultation
 - Review of international health systems and structures
 - Multi criteria analysis options appraisal process

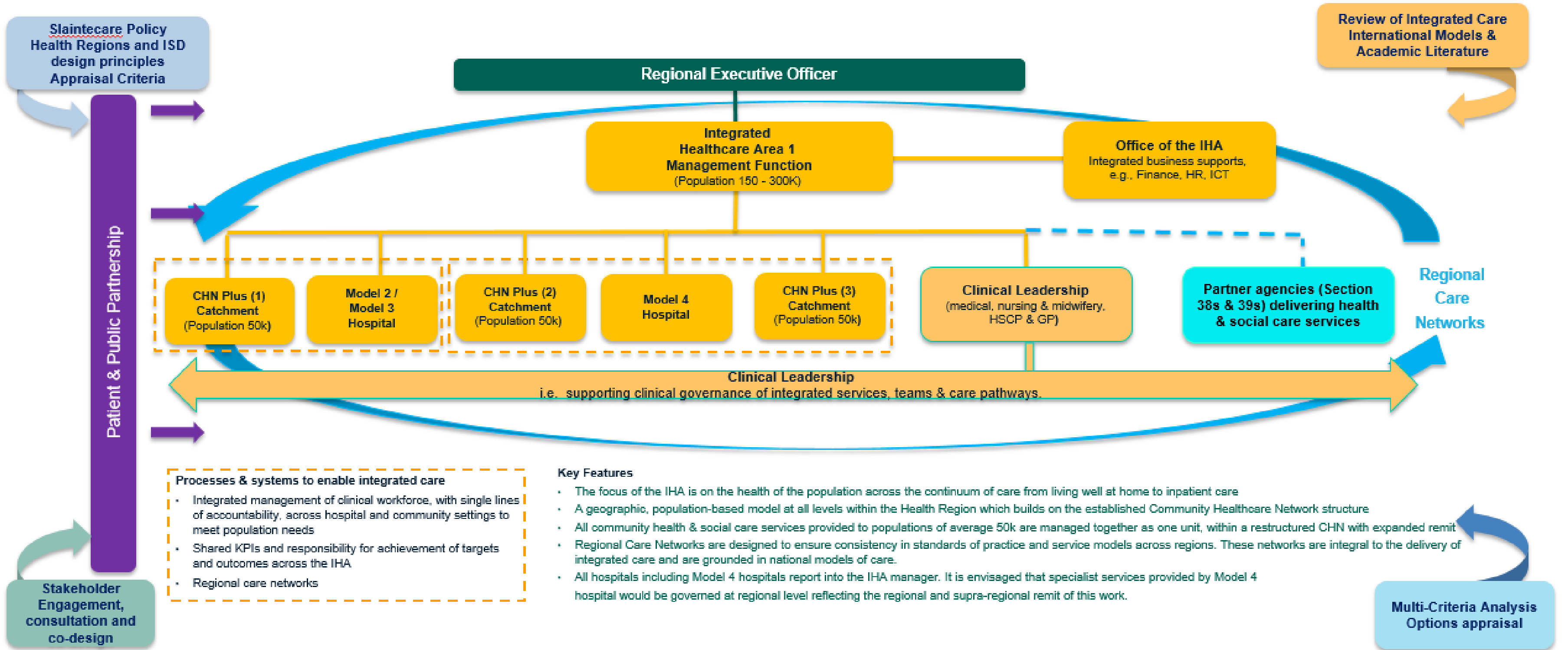


HSE Regions: EMT Structures

Regional Disability Lead	Regional Director Planning & Performance	Regional Clinical Director	Regional Director Nursing & Midwifery	Regional Director Population & Public Health
	Mental Health Adult & Children	QPS		
	Disability Adult & Children	Academic, Research and Education		
	Children & Young People	Regional Clinical Governance Pathways & Networks	Regional Nursing Governance Pathways & Networks	Health Protection
	Older Persons			Health Intelligence
	Primary Care			Health Improvement
	Social Inclusion			Service Improvement
	Acute Services			
	Access & Capacity			
	Health & Wellbeing			
	Planning			
	Performance			
	Palliative Care, End of Life, Bereavement			
	Contract/ SLA Management			



Integrated Healthcare Area





Networks of Care (NoC)

Goals:

- Facilitate patient-focused, integrated and multidisciplinary delivery of care for service users and patients across the care continuum within the region
- Plan and assure sustainable, quality & safe patient care through continuous improvement within the region
- Ensure an appropriate level of national consistency, standardisation and collaboration across all networks, minimising variation throughout the system

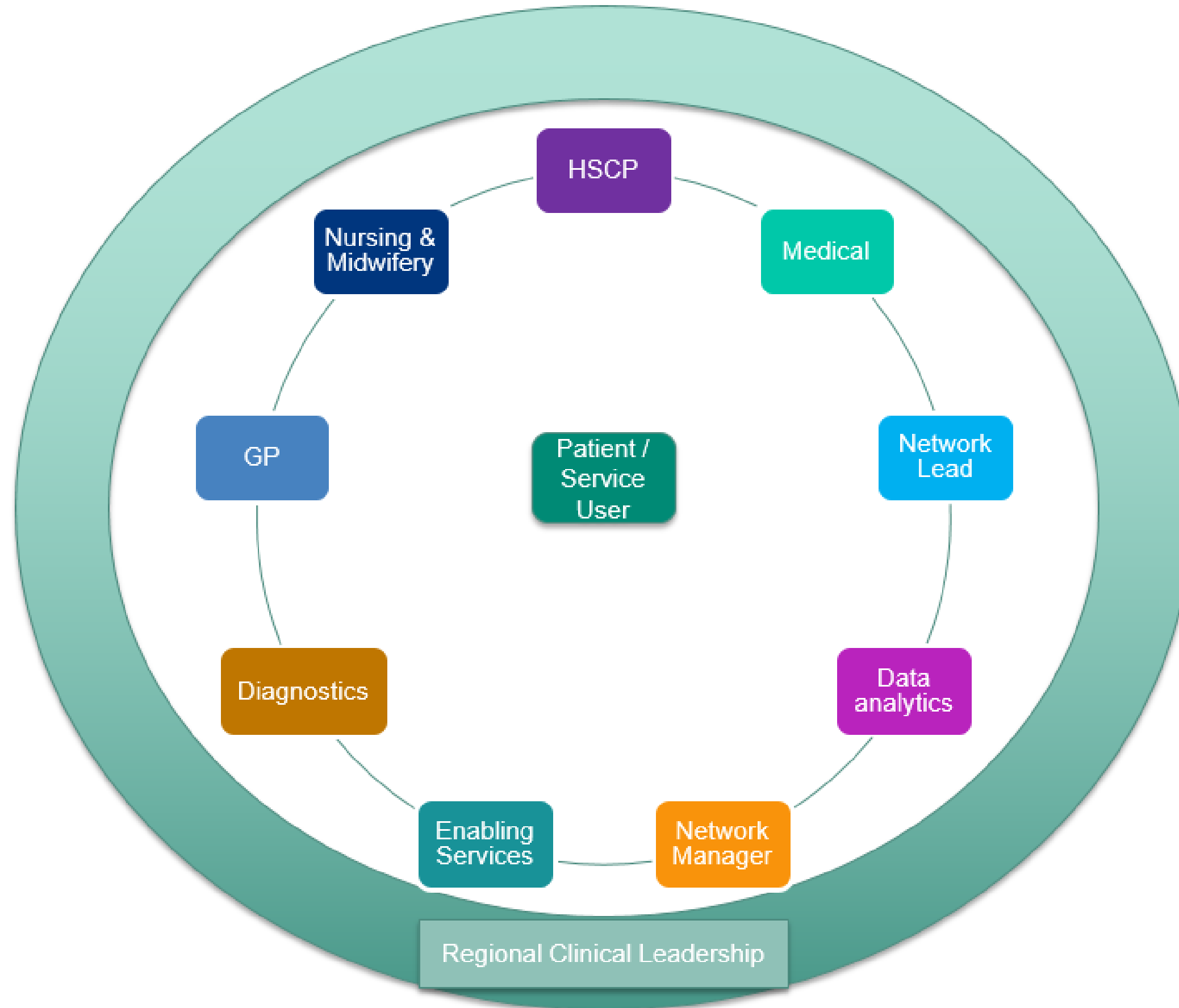
Potential Networks of Care:

Older Persons
 Women and Infants
 Children and Young People
 Disability
 Mental Health
 Medicine
 Diagnostics
 Perioperative
 Cancer Services





Networks of Care: Proposed Membership

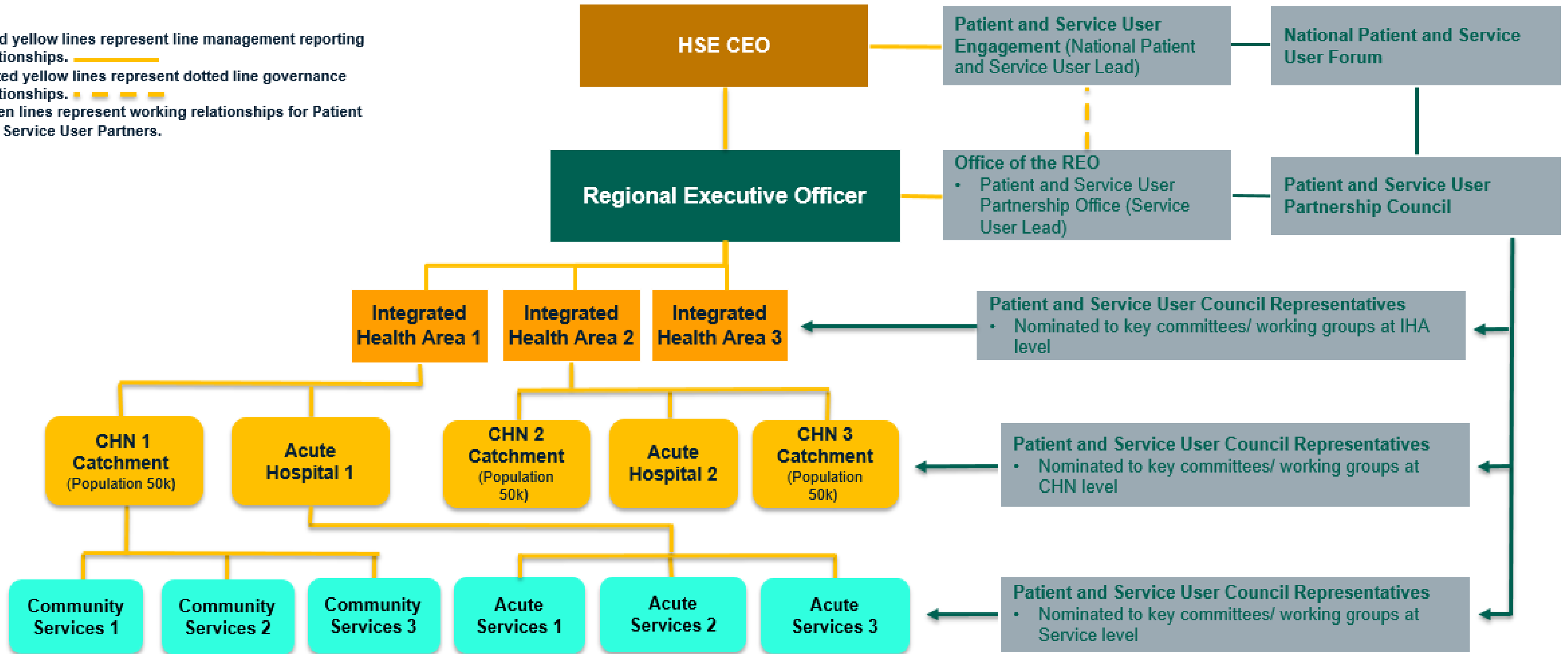




Regional Patient and Service User Partnership Structures

Note:

- Solid yellow lines represent line management reporting relationships.
- Dotted yellow lines represent dotted line governance relationships.
- Green lines represent working relationships for Patient and Service User Partners.





Upcoming webinar: 26th September 2024



Health Regions Webinar Series

HSE and health service staff information and learning sessions

“ Balancing Stability with Change”
Creating conditions for integration
1pm on 26th September, 2024

Objectives

Update on Health Region implementation

Share reflections and learning from the lived experience of an integrated care team/ service

Identify key considerations for balancing stability with change while creating conditions for integration for individuals and teams / services

Panel Q&A with senior HSE leaders.

Signpost key resources and supports.

Registration

Registration now open via: <https://healthservice.hse.ie/staff/latest-health-regions-updates/>