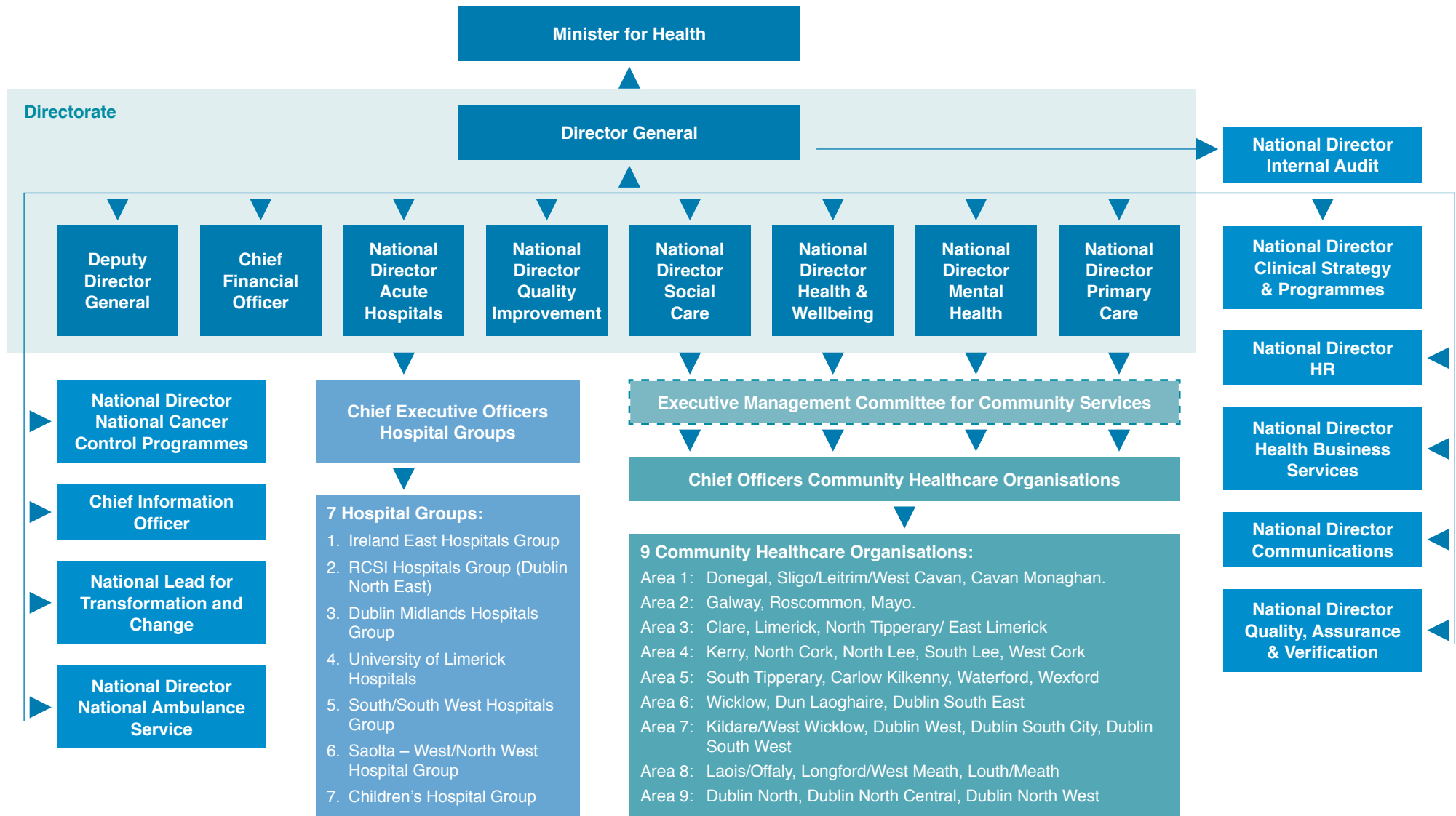


Chapter 3 - Health Service Executive Organisational Structure

The Directorate is supported by a wider Leadership Team of National Directors who are responsible for National Service Delivery Divisions and the National Support Divisions (see Figure 1 below).

Figure 1



Chapter 3 - Health Service Executive Organisational Structure

3.1 National Service Delivery Divisions

In line with the health reforms set out in the Department of Health's Future Health – A Strategic Framework for Reform of the Health Service 2012-2015, health and social care services are delivered through a number of National Service Delivery Divisions, responsible for the delivery of services to the public. National Service Delivery Divisions are as follows;

- ▶ Acute Hospitals
- ▶ Social Care
- ▶ Mental Health
- ▶ Primary Care
- ▶ Health and Wellbeing
- ▶ National Ambulance Service

A brief outline of the functions and responsibilities of each of these National Service Delivery Divisions is set out below.

▶ **Acute Hospitals**

Acute hospital services are provided through seven Hospital Groups. The Acute Hospitals Division works directly with acute hospitals across the country to provide all patients with equal access to safe quality services. The Division also collaborates with other Divisions and key stakeholders. The reorganisation of public hospitals into seven Hospital Groups is designed to deliver improved outcomes for patients. The hospitals making up each group work together to provide acute care for patients and work to develop close relationships with health and social care services in the community. The objective is to maximise the amount of appropriate care delivered in local smaller hospitals while ensuring that highly specialised and complex care is safely provided in larger hospitals.

▶ **Social Care**

The Social Care Division supports and facilitates older people and people with disabilities to live independently by promoting their independence and lifestyle choice as far as possible. Services are delivered directly by the HSE or through agencies funded by the HSE which are governed through service arrangements or grant aid agreements.

▶ **Mental Health**

The objective of the Mental Health Division is to create a structure to effectively manage the strategic, operational and financial activities for mental health services. The division has responsibility for Area based Mental Health Services (approved in-patient residential centres and all community based teams), Child and Adolescent Mental Health, General Adult Mental Health, Psychiatry of Old Age, the National Forensic Mental Health Service, the National Counselling Service and the National Office for Suicide Prevention

▶ **Primary Care**

The objective of the Division is to ensure that the vast majority of patients and clients who require urgent or planned care are managed within primary care and community based settings whilst ensuring that services are safe and of the highest quality, responsive, accessible, efficient, integrated and aligned with relevant specialist services.

▶ **Health and Wellbeing**

The objective of the Division is to support people to live healthier and more fulfilled lives. Health and Wellbeing services cover the areas of public health, health protection, child health, national screening programmes, health promotion and improvement, environmental health, emergency management and health intelligence. The Division also has an enabling role in relation to the roll out of the Healthy Ireland Framework in the health services through the development and implementation of Hospital Groups, Community Healthcare Organisations and Divisional Health Intelligence plans.

▶ **National Ambulance Service**

The objective of the National Ambulance Service is to provide a modern, quality service that is safe, responsive and fit for purpose whilst delivering a significant reform agenda which has at its centre service improvement to ensure high quality safe care for its patients.