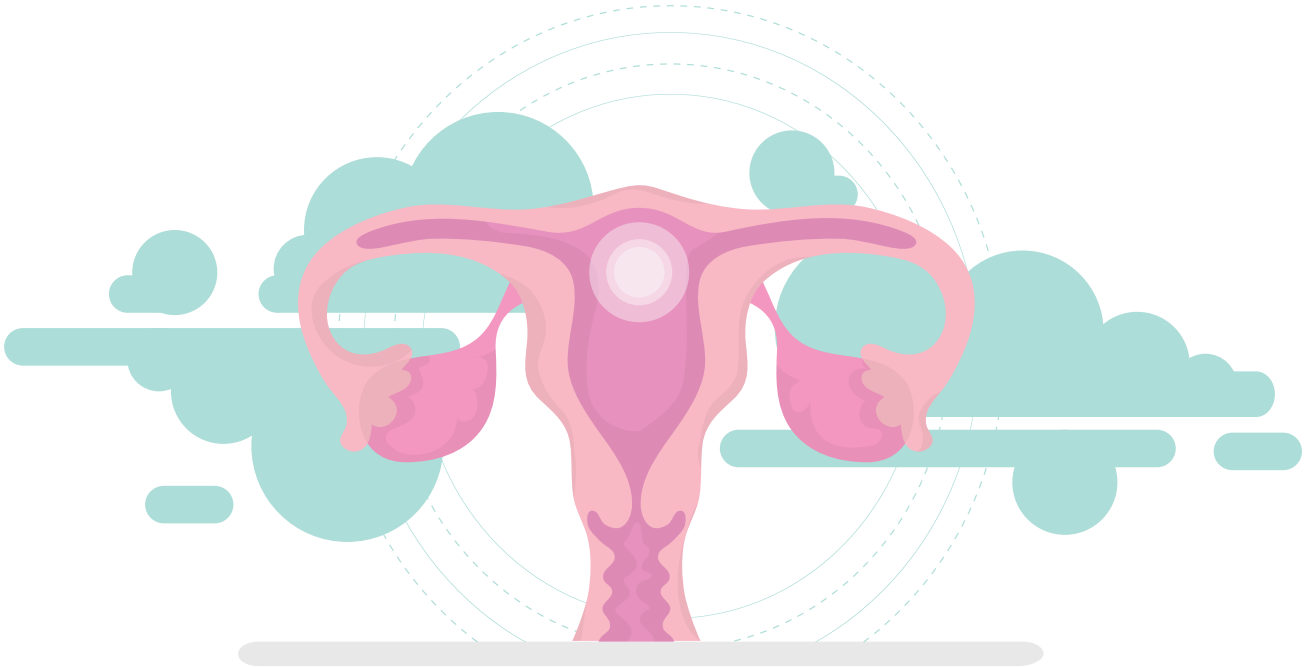


## Worksheet 3 – Journey of the egg



### Uterus (womb)

The egg travels to the uterus. If it has been fertilised by a sperm, it will try to embed itself into the lining of the uterus wall (endometrium) which has become extra nourishing in preparation for a fertilised egg. If it is successful, a pregnancy will occur.

### Ovary

An egg matures and is released from an ovary during each menstrual cycle in the female body.

### Fallopian tube

After ovulation, the egg travels along the fallopian tube towards the uterus. If it meets a sperm here it may be fertilised.

### Vagina

Parts of the disintegrated egg will leave the body through the vagina in menstrual blood (period).

### Cervix

If the egg has not been fertilised or embedded in the uterus wall, it will begin to break up. Some of it may be reabsorbed by the body, and some may be carried away through the cervix along with the additional uterus lining that is no longer needed.