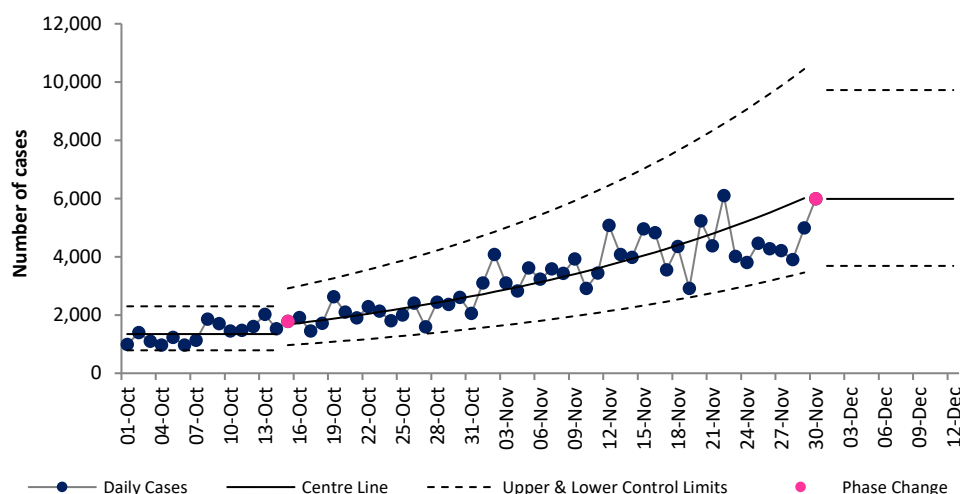


# COVID-19 Data Summary, Wednesday 01<sup>st</sup> December 2021

## Weekly Report on COVID-19 Statistical Process Control Charts

1<sup>st</sup> December 2021

Daily COVID-19 Reported Cases



### Epoch 3: Plateau or descent in Daily Reported Cases

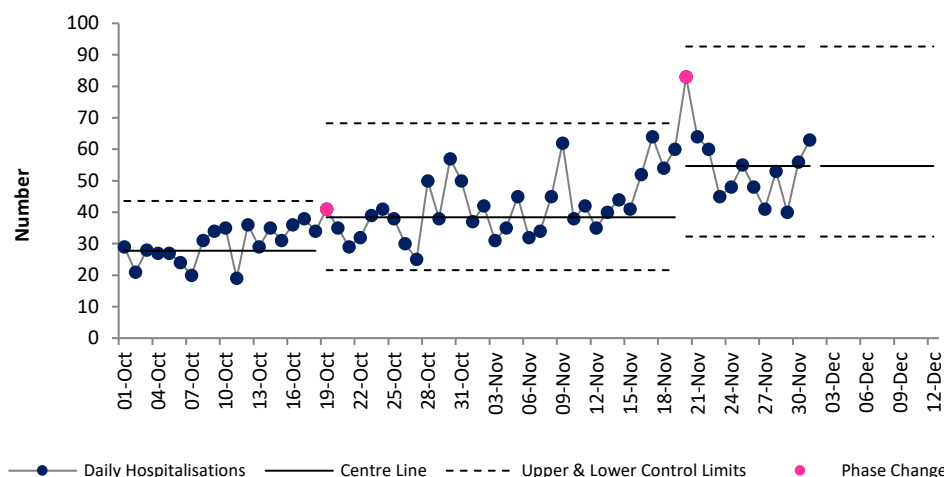
From 23<sup>rd</sup> September to 14<sup>th</sup> October cases remained in Epoch 3 plateau or descent in daily cases.

From 15<sup>th</sup> October, cases entered Epoch 2, rapid growth. During this phase both cases and the rate of growth of cases to increased.

**From November 30<sup>th</sup>**, daily reported cases has re-entered Epoch 3.

Based on data up to 30<sup>th</sup> November we would expect to see, new cases stabilise at 5987 cases per day.

Daily new hospital admissions of COVID-19 positive patients

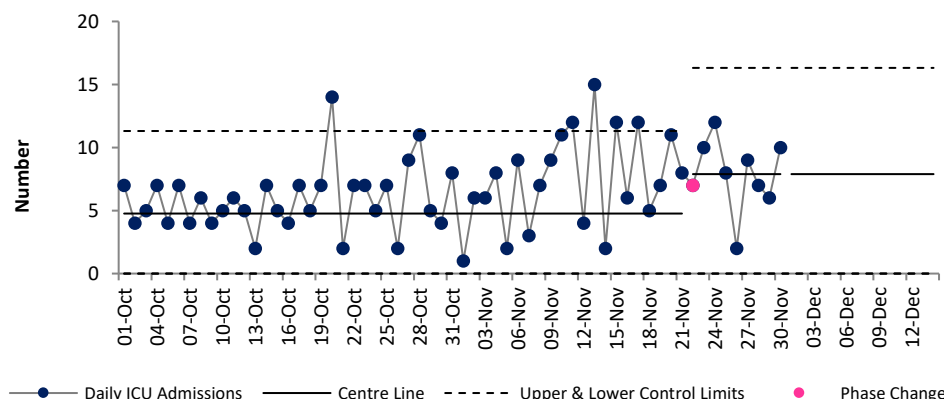


### Epoch 3: Plateau or descent in daily reported hospital admissions

Addition of recent data has shown that daily new hospital admission of COVID-19 positive patients has been in epoch 3 (plateau/stability) since Sept 3<sup>rd</sup>. There have been several signals of increase including 19<sup>th</sup> Oct when expected average admissions increased from 27 to 38 and then again on to 19<sup>th</sup> Nov when expected average admission increased from 38 to 54. Admissions while increasing do not meet the criteria for rapid growth.

We would expect to see **54 admissions daily (or 378 per week)**.

Daily admissions to ICU of COVID-19 positive patients



### Epoch 4: Stability after descent in daily reported ICU admissions

The number of new ICU admissions per day of COVID positive patients had been trending downwards since January. From 25<sup>th</sup> July to 17<sup>th</sup> August ICU admissions remained stable at a higher level than in preceding weeks (3.3 per day). From 18<sup>th</sup> August to 21<sup>st</sup> Nov ICU admissions remained stable but a higher level than preceding weeks (4.8 per day).

From 22<sup>nd</sup> Nov onward expected ICU admissions increase to **7.8 per day (55 a week)**. While the absolute number of expected admissions has increased, it does not yet met the threshold for rapid growth and thus remains stable at that higher level.

Note that due to the cyber attack data on daily notified deaths of people with COVID-19 are not currently available.

For more information on the methodology used above and the team behind the development of this SPC approach see

<https://www.hse.ie/eng/about/who/qid/covid-19-qi-learning/resources-developed-to-support-the-national-covid19-response/understanding-variation-in-key-covid-19-indicators-in-ireland-using-statistical-process-control-shewhart-charts.pdf>