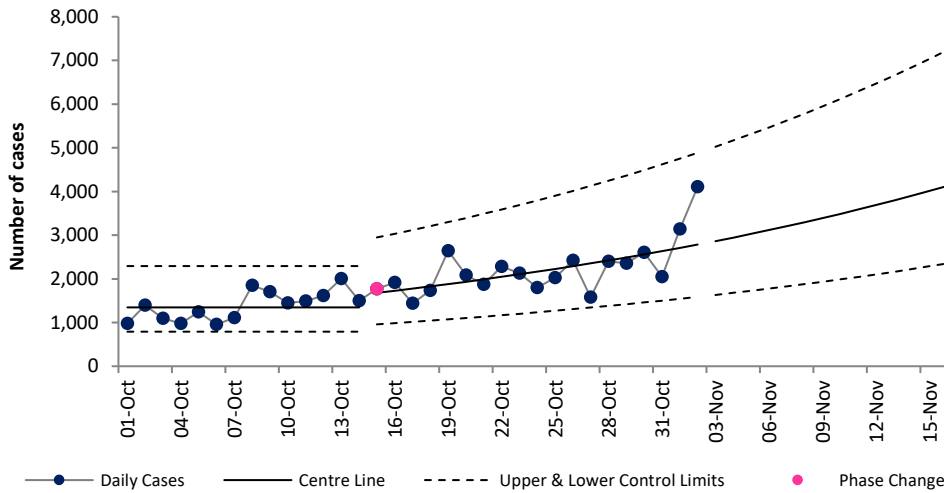


COVID-19 Data Summary, Wednesday 3rd November 2021

Weekly Report on COVID-19 Statistical Process Control Charts

3rd November 2021

Daily COVID-19 Reported Cases



Epoch 2: Growth in Daily Reported Cases

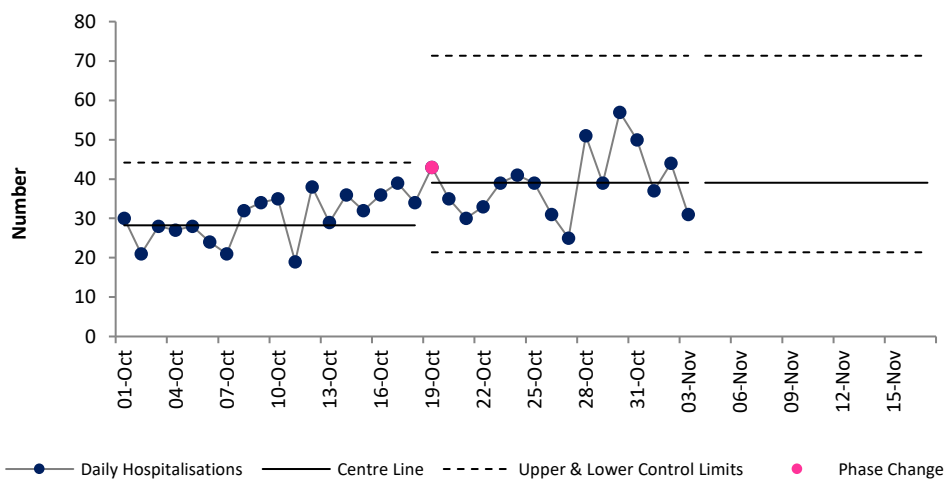
The number of new cases reported per day had been increasing (between 12th June & 15th August). Cases then decreased (between 16th August and 22nd September).

From 23rd September to 14th October cases remained in Epoch 3, stable but at a higher level and again from 15th October cases remained in Epoch 3 (stability) but at an even higher level again.

From 15th October, cases have entered Epoch 2, rapid growth. During this phase we expect both cases and the rate of growth of cases to increase.

Based on data up to 3rd November we would expect to see 4,125 new cases on 15th Nov.

Daily new hospital admissions of COVID-19 positive patients

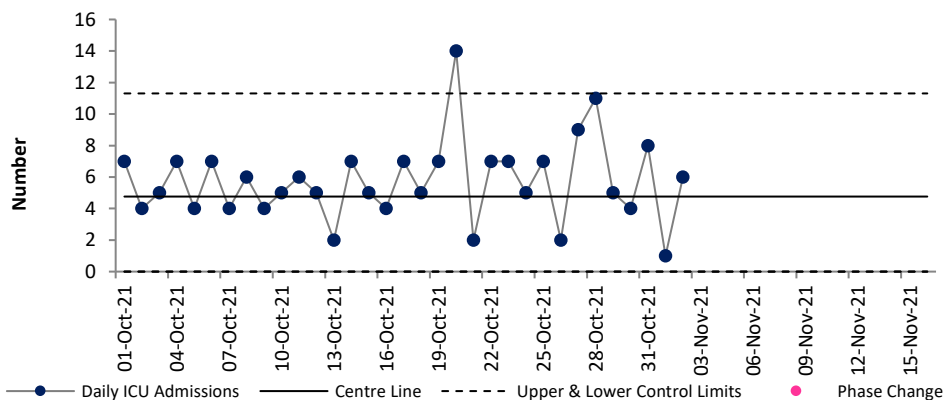


Epoch 3: Plateau or descent in daily reported hospital admissions

The number of new hospitalisations per day of COVID positive patients had been trending upwards until 2nd September (i.e. in Epoch 2, growth phase), during which time the average increased from 16 admissions per day on 1st August to 42 admissions per day by 2nd September.

There was signal of a reduction from 3rd Sept and admissions entered Epoch 3 (plateau or descent phase). Since Oct 19th admissions have been stable but at a higher level. Based on the current data we can **expect to continue to see an average of 39 hospital admissions of COVID positive patients per day.**

Daily admissions to ICU of COVID-19 positive patients



Epoch 4: Stability after descent in daily reported ICU admissions

The number of new ICU admissions per day of COVID positive patients had been trending downwards since January.

There was a signal of a reduction in the average number of new ICU admissions of COVID positive patients per day from 1.3 since 30th April to 0.6 per day since 10th June.

From 25th July to 17th August ICU admissions remained stable at a higher level than in preceding weeks (3.3 per day).

From 18th August ICU admissions remain stable but again at a higher level than preceding weeks. We can expect an average of 4.8 admissions per day. **Outlying value of 14 admissions was recorded on Oct 20th.**

Note that due to the cyber attack data on daily notified deaths of people with COVID-19 are not currently available.
For more information on the methodology used above and the team behind the development of this SPC approach see <https://www.hse.ie/eng/about/who/qid/covid-19-qi-learning/resources-developed-to-support-the-national-covid19-response/understanding-variation-in-key-covid-19-indicators-in-ireland-using-statistical-process-control-shewhart-charts.pdf>