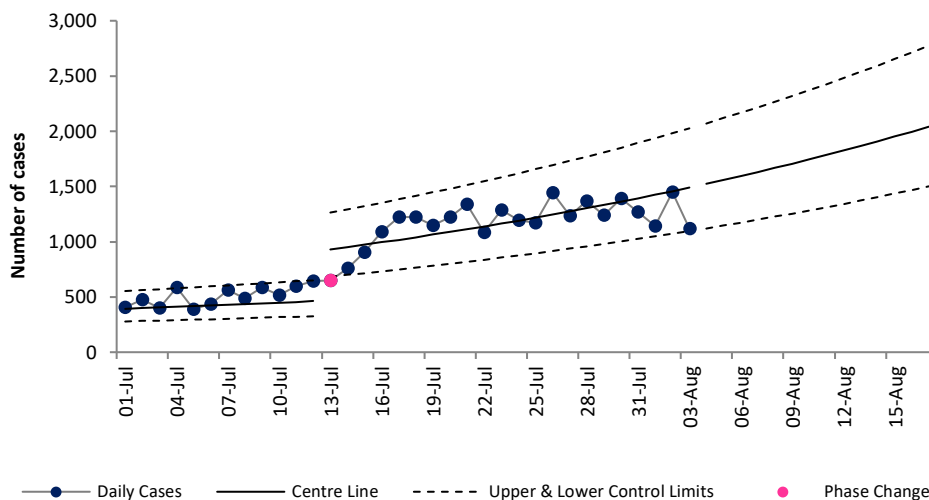


# COVID-19 Data Summary, Wednesday 4<sup>th</sup> August 2021

## Weekly Report on COVID-19 Statistical Process Control Charts

04 August 2021

Daily COVID-19 Reported Cases



### Epoch 2: Growth in daily reported cases

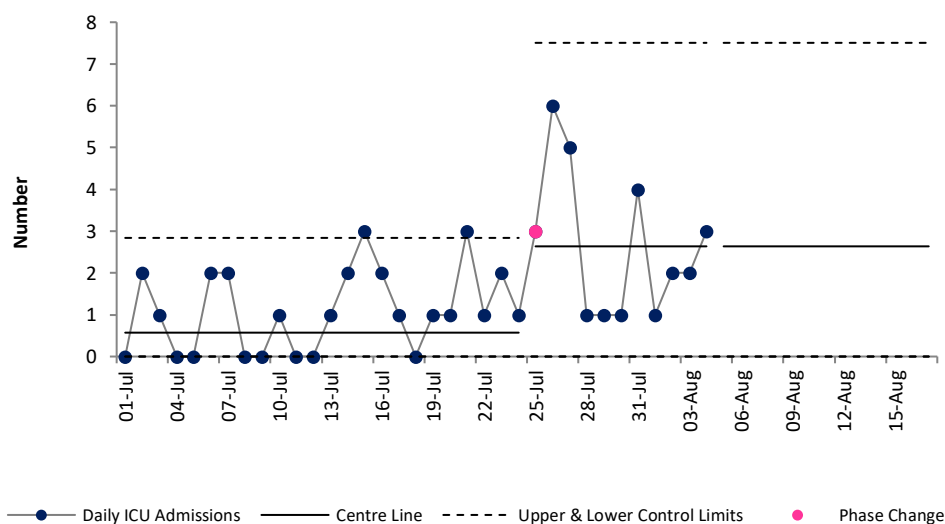
The latest data indicates that the number of new cases reported per day has been increasing (i.e. in the growth phase / Epoch 2) since 12<sup>th</sup> June after being in Epoch 3 (plateau or descent in daily cases) since 17<sup>th</sup> May.

The average number of cases per day increased from 294 on 12<sup>th</sup> June to 462 per day on 12<sup>th</sup> July.

Cases increased at faster rate from 13<sup>th</sup> July, from an average of 930 per day to 1,524 per day on 4<sup>th</sup> August.

If cases continue to grow at this rate we can expect to see an average of 2,041 cases per day by 17<sup>th</sup> August.

Daily admissions to ICU of COVID-19 positive patients



### Epoch 4: Stability after descent in daily reported ICU admissions

The number of new ICU admissions per day of COVID positive patients has been trending downwards since January.

There was a signal of a reduction in the average number of new ICU admissions of COVID positive patients per day from 1.3 since 30<sup>th</sup> April to 0.6 per day since 10<sup>th</sup> June.

Since 25<sup>th</sup> June ICU admissions remain stable at a higher level than in preceding weeks. We can expect to continue to see an average of 2.63 ICU admissions per day.

Note that due to the cyber attack data on daily new hospital admissions of COVID-19 positive patients and daily notified deaths of people with COVID-19 are not currently available.

For more information on the methodology used above and the team behind the development of this SPC approach see <https://www.hse.ie/eng/about/who/qid/covid-19-qi-learning/resources-developed-to-support-the-national-covid19-response/understanding-variation-in-key-covid-19-indicators-in-ireland-using-statistical-process-control-shewhart-charts.pdf>