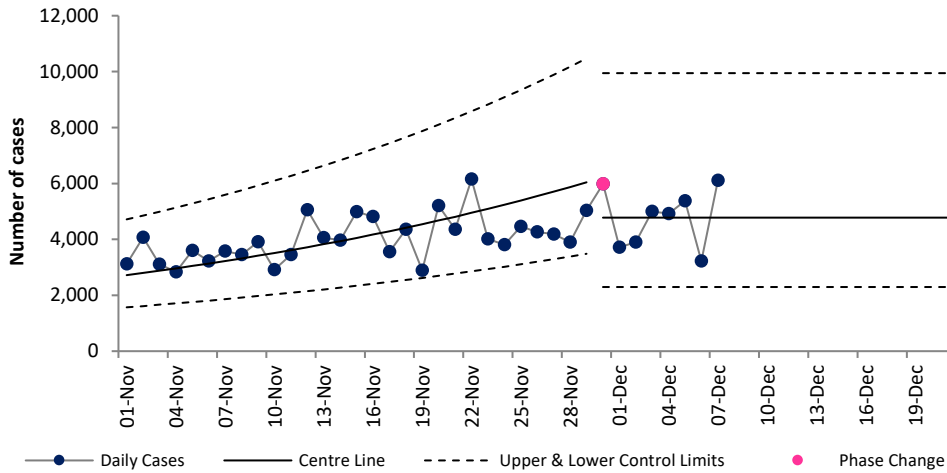


# COVID-19 Data Summary, Wednesday 08<sup>th</sup> December 2021

## Weekly Report on COVID-19 Statistical Process Control Charts

### 8<sup>th</sup> December 2021

**Daily COVID-19 Reported Cases**



**Epoch 3: Plateau or descent in Daily Reported Cases**

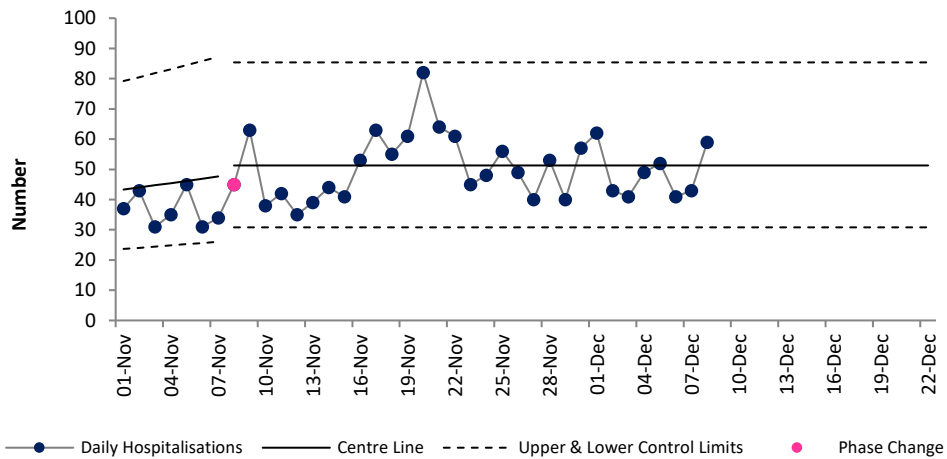
From 23<sup>rd</sup> September to 14<sup>th</sup> October cases remained in Epoch 3 plateau or descent in daily cases.

From 15<sup>th</sup> October, cases entered Epoch 2, rapid growth. During this phase both cases and the rate of growth of cases increased.

**From November 30<sup>th</sup>**, daily reported cases has re-entered Epoch 3.

Based on data up to 7<sup>th</sup> December we would expect to see, new cases stabilise at 4,777 cases per day.

**Daily new hospital admissions of COVID-19 positive patients**



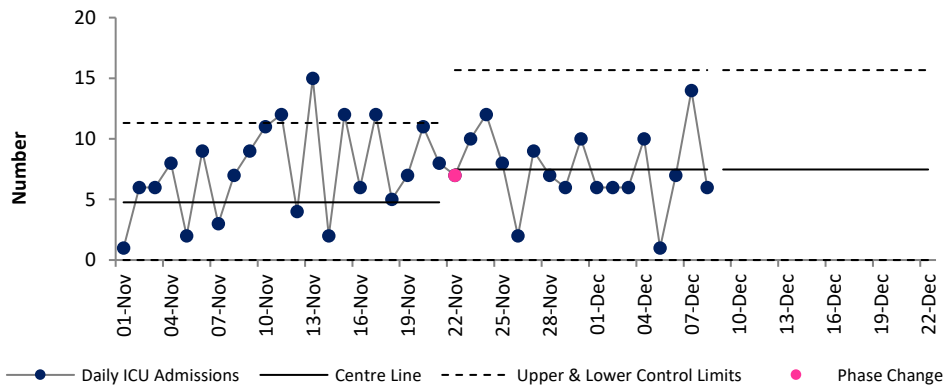
**Epoch 3: Plateau or descent in daily reported hospital admissions**

From 10<sup>th</sup> Oct, Covid Hospitalisations entered a short rapid growth phase until 7<sup>th</sup> November.

Addition of recent data has shown that daily new hospital admission of COVID-19 positive patients has been in epoch 3 (plateau/stability) since Nov 8<sup>th</sup>.

We would expect to see **51 admissions daily (or 357 per week)**.

**Daily admissions to ICU of COVID-19 positive patients**



**Epoch 4: Stability after descent in daily reported ICU admissions**

The number of new ICU admissions per day of COVID positive patients had been trending downwards since January. From 25<sup>th</sup> July to 17<sup>th</sup> August ICU admissions remained stable at a higher level than in preceding weeks (3.3 per day). From 18<sup>th</sup> August to 21<sup>st</sup> Nov ICU admissions remained stable but a higher level than preceding weeks (4.8 per day).

From 22<sup>nd</sup> Nov onward expected ICU admissions increase to **7.5 per day (53 a week)**. While the absolute number of expected admissions has increased, it does not yet met the threshold for rapid growth and thus remains stable at that higher level.

Note that due to the cyber attack data on daily notified deaths of people with COVID-19 are not currently available. For more information on the methodology used above and the team behind the development of this SPC approach see <https://www.hse.ie/eng/about/who/qid/covid-19-qi-learning/resources-developed-to-support-the-national-covid19-response/understanding-variation-in-key-covid-19-indicators-in-ireland-using-statistical-process-control-shewhart-charts.pdf>