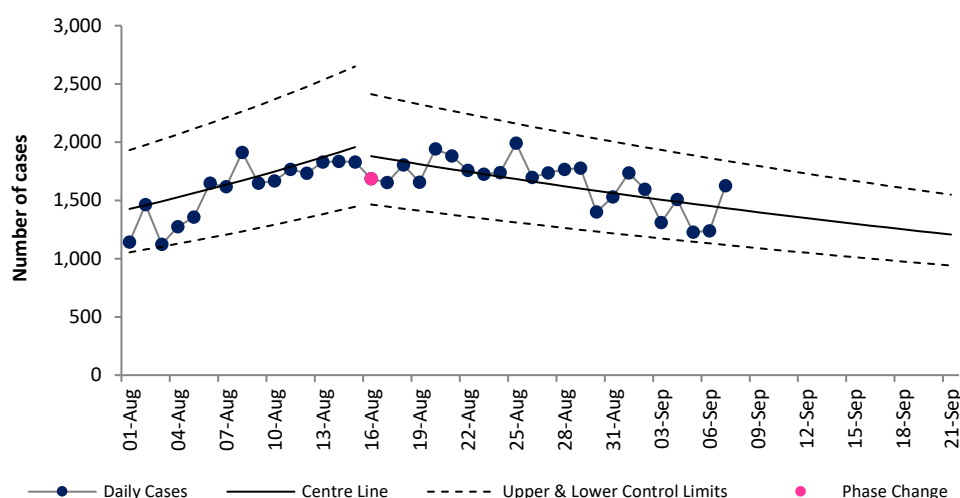


COVID-19 Data Summary, Wednesday 8th September 2021

Weekly Report on COVID-19 Statistical Process Control Charts

8th September 2021

Daily COVID-19 Reported Cases



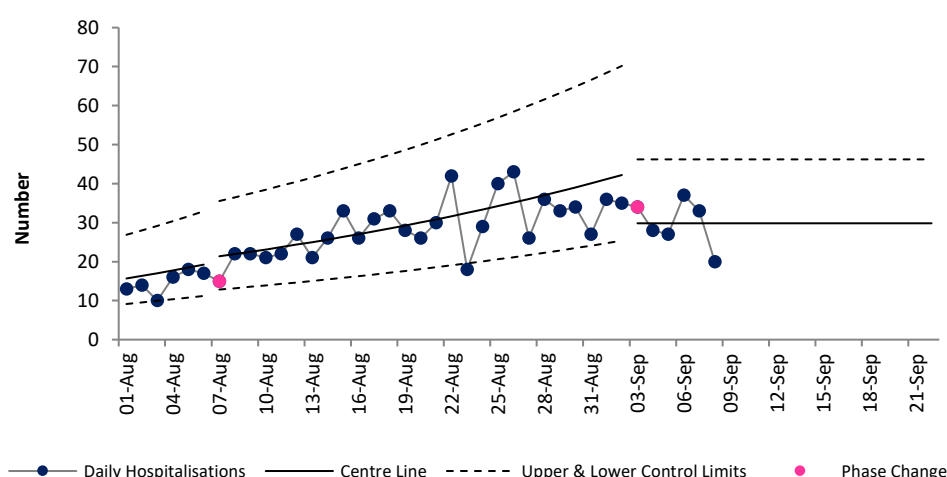
Epoch 3: Plateau or descent in daily reported cases

The latest data indicates that the number of new cases reported per day has decreased (i.e. in the Plateau or descent phase/ Epoch3) since 16th August after being in Epoch 2 (growth phase) since 12th June.

Cases increased from 13th July, from an average of 928 per day to 1,957 per day on 15th August.

Since then cases have been decreasing to an average of 1,434 on 7th Sept. Based on current data we would expect cases to continue to trend downwards to an average of 1207 cases by 21st Sept.

Daily new hospital admissions of COVID-19 positive patients

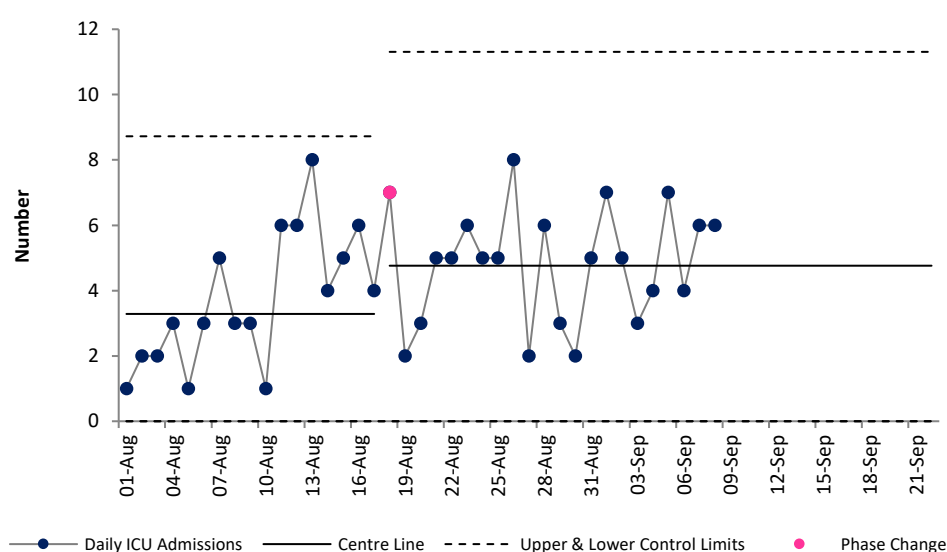


Epoch 3: Plateau or descent in daily reported hospital admissions

The number of new hospitalisations per day of COVID positive patients had been trending upwards until 2nd September (i.e. in Epoch 2, growth phase), during which time the average increased from 16 admissions per day on 1st August to 42 admissions per day by 2nd September.

There was signal of a reduction since 3rd Sept, and the number is now stable and in Epoch 3 (plateau or descent phase). Based on the current data we can expect to continue to see an average of 30 hospital admissions per day.

Daily admissions to ICU of COVID-19 positive patients



Epoch 4: Stability after descent in daily reported ICU admissions

The number of new ICU admissions per day of COVID positive patients had been trending downwards since January.

There was a signal of a reduction in the average number of new ICU admissions of COVID positive patients per day from 1.3 since 30th April to 0.6 per day since 10th June.

From 25th July to 17th August ICU admissions remained stable at a higher level than in preceding weeks (3.3 per day).

From 18th August ICU admissions remain stable but again at a higher level than preceding weeks. We can expect an average of 4.8 admissions per day.

Note that due to the cyber attack data on daily notified deaths of people with COVID-19 are not currently available. For more information on the methodology used above and the team behind the development of this SPC approach see <https://www.hse.ie/eng/about/who/qid/covid-19-qd-learning/resources-developed-to-support-the-national-covid19-response/understanding-variation-in-key-covid-19-indicators-in-ireland-using-statistical-process-control-shewhart-charts.pdf>