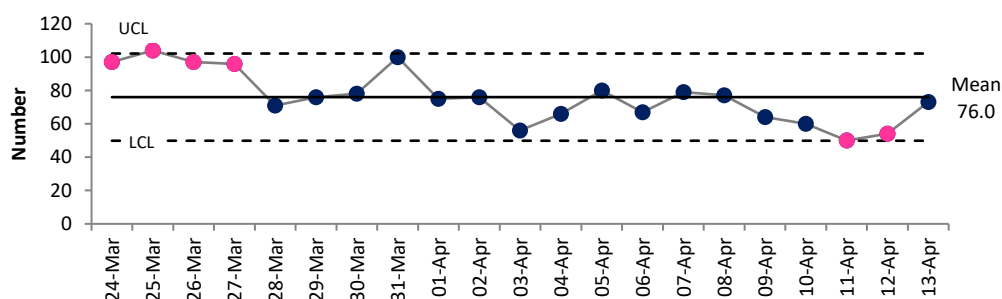


COVID-19 Data Summary, Wednesday 13th April 2022

Introduction:

As the COVID restrictions are eased, we will continue to monitor the situation closely to predict future pressures on the hospital system and to assess effectiveness of control measures.

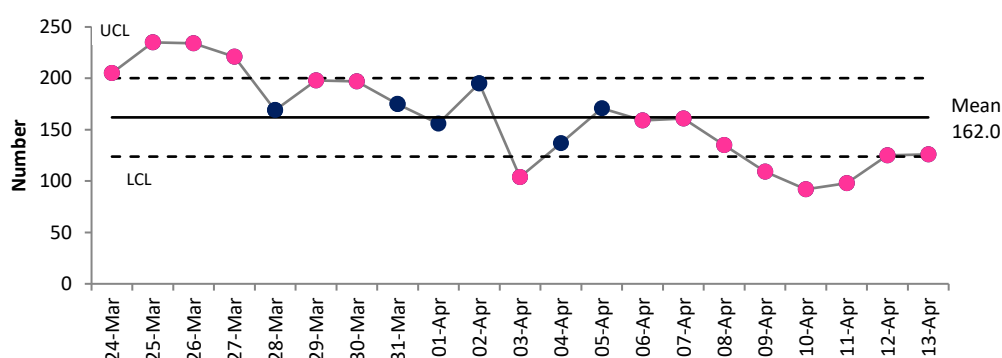
Number of hospital admissions of COVID positive patients during the previous 24 hours



The SPC chart shows admissions exhibited signals of increase from Mar 24th to Mar 27th. However, **admissions exhibited signals of decrease on 11th and 12th Apr.** An average of 76 admissions per day of COVID positive patients over the last three weeks.

A total of 457 admissions over the past 7 days, **down 12% on the previous week** (520 admissions last week). **76** today

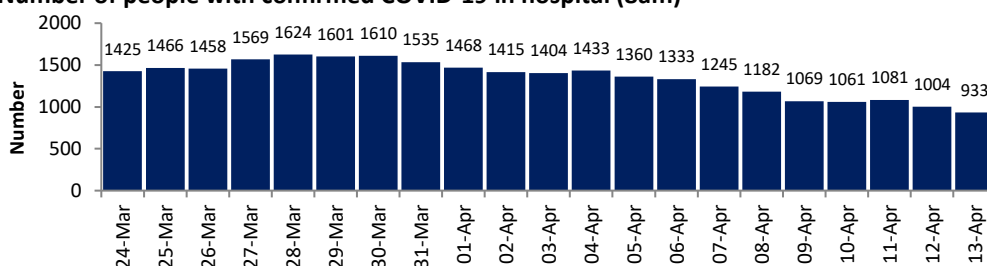
Number of new confirmed COVID cases in hospital, previous 24 hours



The SPC chart shows an average of 162 new confirmed COVID cases in hospital (includes admissions with known COVID & cases with COVID diagnosed after admission). Signals of increase were recorded 24th – 30th March. However, **there were fewer cases than expected on 3rd, and 9th-12th Apr and there was a signal of decrease 6th - 13th Apr.**

126 new cases in hospital today. **A total of 846 new cases over the past 7 days** (an average of 121 per day), **down 23% on the prev. week (1097).**

Number of people with confirmed COVID-19 in hospital (8am)

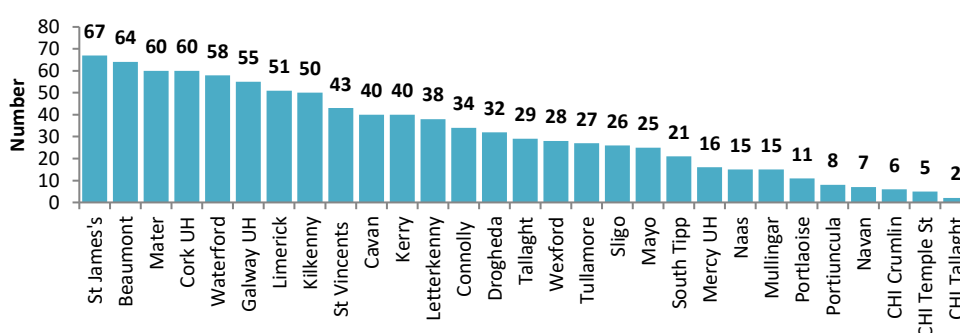


The number of people with COVID in hospital has decreased since a recent peak of 1,624 on 28th March and is trending downwards.

933 in hospital at 8am today.

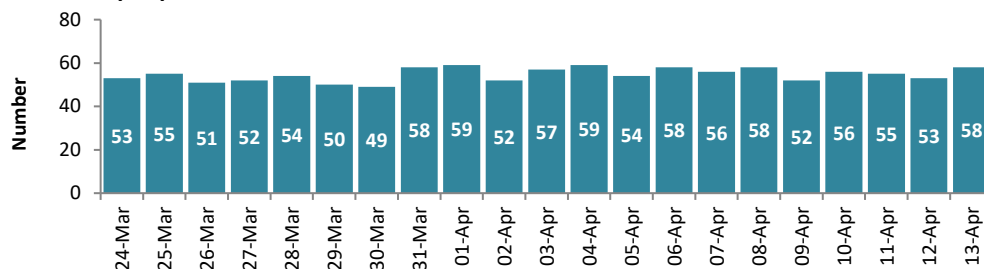
Down 30% on the same day last week and down 42% on the same day two weeks ago.

Number of people with confirmed COVID-19 in hospital, by hospital (8am on 13th Apr)



Of the 933 people with confirmed COVID-19 in hospital, **St. James's has the highest number (67 people)**, followed by the Beaumont (64), the Mater (60), Cork UH (60), Waterford (58) and Galway UH (55).

Number of people with COVID-19 in critical care

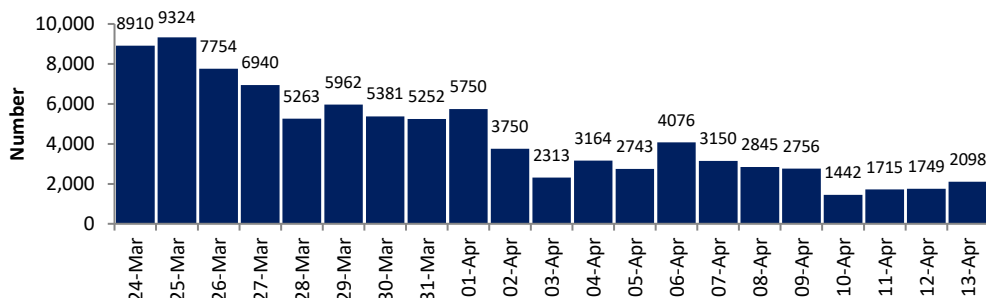


The number with COVID-19 in critical care has remained stable this week.

No change on this day last week and up 18% on two weeks ago.

Currently 58 in ICU (the same as the same day last week). 8 new admissions today.

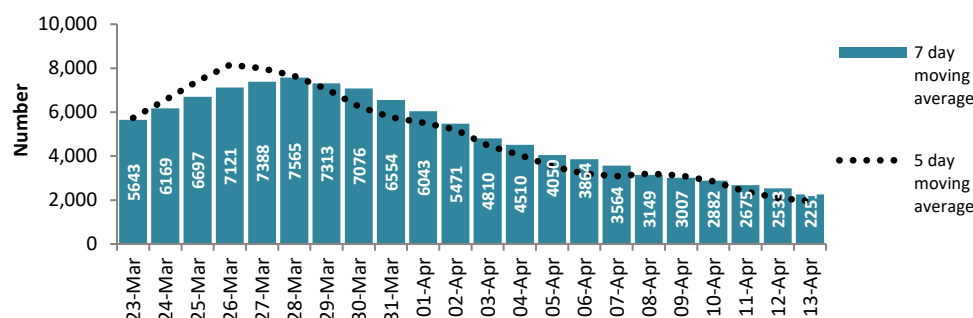
Number of new cases per day (last 3 weeks to 13th Apr), based on PCRs only



The number of new cases has decreased over the last week. Down 42% on total cases (15,755) in last 7 days compared to week before (27,048).

It is important to note the change in testing policy from 28th February with confirmatory PCR tests no longer required for most people, with the exception of certain groups.

5 and 7 day moving averages of new cases per day (14 days to 13th Apr), PCRs only

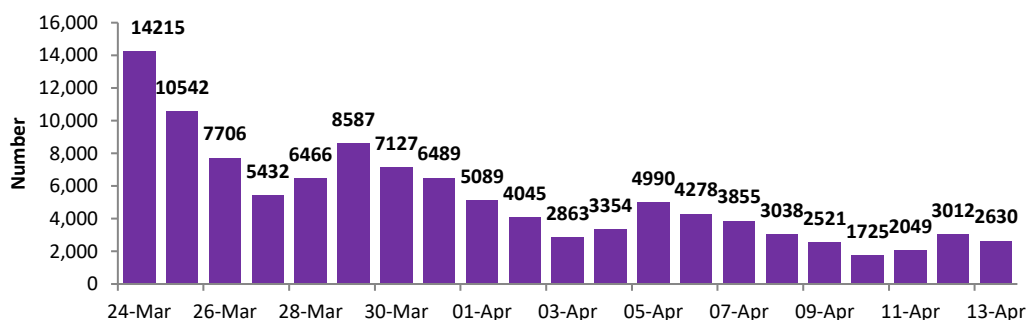


Compared to last week the 5 day moving average is down 39% and the 7 day moving average is down 42%.

Compared to previous 2 weeks, the 5 day average is down 69% and the 7 day average is down 68%.

Note change in testing policy from 28th February.

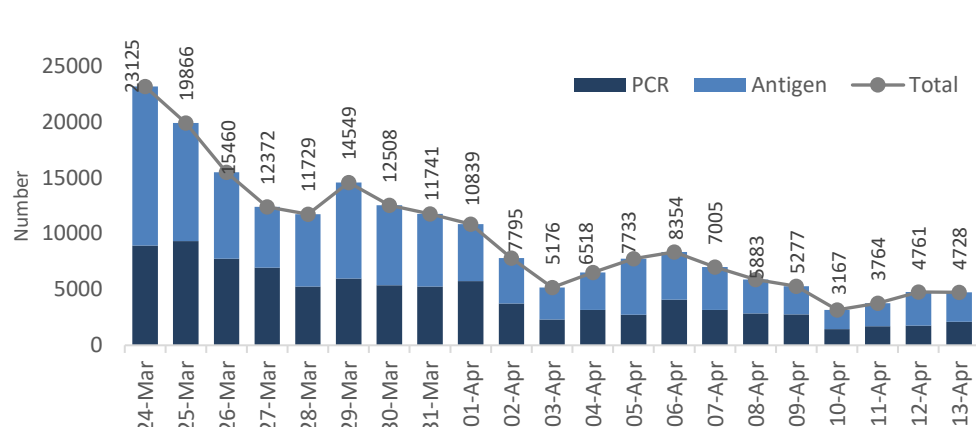
Number of people who registered positive antigen tests through the HSE portal



In addition to positive PCR results, 18,830 people have registered a positive antigen result on the HSE portal over the past 7 days (an average of 2,690 per day). Compared to one week ago this is down 40% and compared to two weeks ago down 69%.

Note the figures reported refer to the number of people who registered a positive test on the portal during the previous day.

Total Estimated daily case number: PCR results and self-reported antigen test results

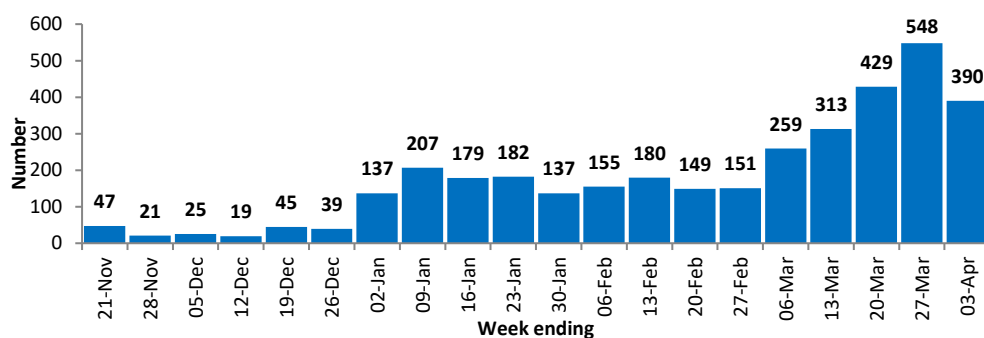


A daily case number can be estimated by combining total PCR results and Antigen test results. **4,728 estimated daily cases today, 2,098 PCR and 2,630 Antigen.** This represents a decrease in estimated daily cases of 43% compared to this day last week (8,354 estimated cases on 6th April).

34,585 estimated cases in the previous 7 days, down 41% on the preceding 7 days.

*These data are provisional, subject to validation & do not represent notified cases. Some duplication may occur due PCR confirmations of positive antigen tests.

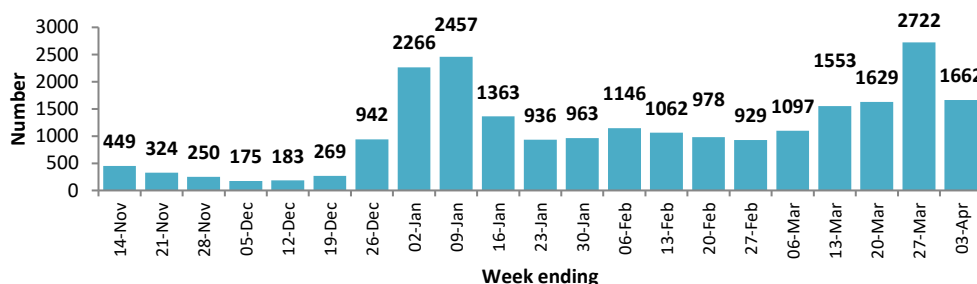
Number of hospital acquired cases of COVID-19 by week



The number of hospital acquired cases of COVID remains high, but decreased by 29% compared to week ending 27th Mar and decreased by 9% compared to week ending 20th Mar.

The week ending 27th March recorded the highest level of hospital acquired cases (548), compared to the previous peak of 442 hospital acquired cases during the week ending 17th Jan 2021.

Number of new lab confirmed cases of COVID in hospital staff, by week

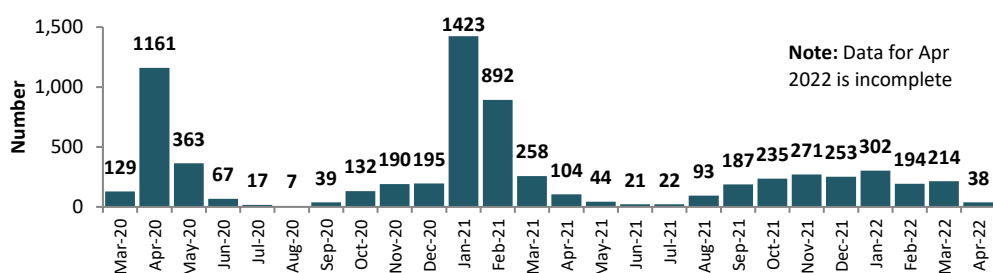


The number of new laboratory confirmed cases of COVID in hospital staff is significantly higher over the past 3 months than in previous months, recording a recent peak of 2,722 week ending 27th Mar.

The latest reported week (ending 3rd April) is down 39% on the previous seven days and up 2% on week ending 20th March.

**Based on available unvalidated information from hospitals on confirmed cases among staff.*

COVID-19 related deaths by month of death

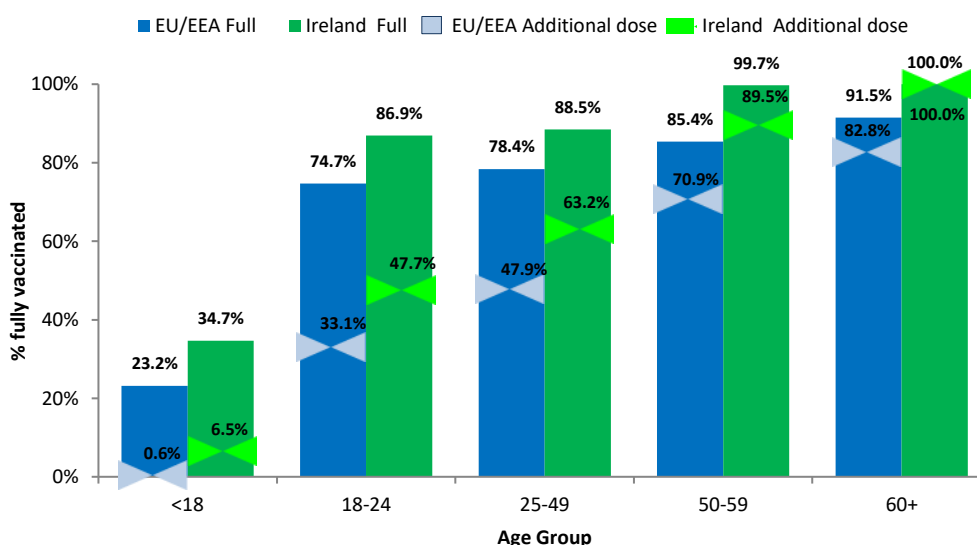


The deaths of 6,884 people with confirmed, probable or possible COVID-19 have been reported to date (up to 9th April).

The deaths of 214 people during the month of March 2022 have been reported to 9th April. 38 deaths have been recorded in April so far this month.

**Date of death reported for 6,851*

Cumulative uptake of full vaccination by age group, Ireland & EU/EEA (ECDC 7th April)



Data from ECDC shows that 83.3% of adults age 18+ in the EU/EEA have completed their primary vaccination course, 94.7% in Ireland.

63.7 % of EU/EEA adults have received a booster vaccination, 75.9% in Ireland.

Uptake rates vary significantly by age group, with Ireland having higher uptake rates across all age groups compared to the EU/EEA.

Key trends & recent changes:

- In the **7 days up to 13th April** there were **15,755 new cases** reported (based on positive PCR results); **down 42% on the previous week** (27,048 new cases in the 7 days up to 6th April). Compared to the previous week, the **5 day moving average is down 39% and compared to 2 weeks down 69%**.
- In addition, over the past 7 days 18,830 people reported a positive antigen test to the HSE portal (average of 2,690 per day). Compared to the previous week, the **reported positive antigens tests are down 40%**.

*It is important to note the change in testing policy with people aged 4-39 referred for antigen self-testing rather than PCR testing, and no longer needing a confirmatory PCR following a positive antigen test since 14th January. In addition, from 28th Feb the requirement to get a PCR test was removed for most people, with the exception of certain groups (including over 55s without a booster, immunocompromised, healthcare workers, those with high-risk medical conditions or pregnant, those living with or caring for someone with a weak immune system).

Hospital activity:

- The number of patients with confirmed COVID currently **in hospital at 8am on 13th April is down 30% compared to last week** (933 at 8am on 13th April, 1,333 at 8am on 6th April).
- Over the past 7 days there have been **457 admissions of COVID positive patients to hospital** (an average of 73 per day), **down 12% on the previous week** (520 new admissions in the 7 days up to 6th April).
- Data from the NOCA ICU Bed Information System shows that the number of **confirmed COVID cases in ICU is stable compared to this day last week** (58 on 13th April, 58 on 6th April) and up 18% compared to two weeks ago.
- **In addition to patients in ICU, on 12th April 221 patients were receiving non-invasive ventilation outside ICU (77 patients with COVID and 144 non-COVID patients), up from 196 on the same day last week.**

Outbreaks (HSPC Epidemiology of COVID-19 Outbreaks/Clusters Report, 12th April):

- For the most recent week (up to 9nd April), there were **12 new outbreaks in acute hospitals notified (25 last week)**.
- **There were 45 outbreaks in nursing homes notified (54 last week)**
- There were 11 new outbreak in community hospitals / long-term care facilities (7 last week)
- **There were 48 outbreaks in residential institutions notified (60 last week)**
- There were 11 outbreaks reported in other health care services (18 last week)
- There were 3 outbreaks associated with schools (3 last week)
- There were no outbreaks associated with childcare facilities (0 last week)

Deaths (HPSC weekly report on COVID-19 deaths, 11th April):

- **6,884** deaths with confirmed (6,583), probable (106), and possible(195) cases of COVID-19 were recorded from 01/03/2020 to 09/04/2022
 - **The median age was 84**
 - 3,182 (46.2%) were female and 3,702 (53.8%) Male
 - **5,566 (80.9%) had one or more underlying condition**, 662 (9.6%) did not and it is unknown for a further 656 (9.5%)
- **3,957 (57.5%)** were linked to outbreaks
 - **2,407 in nursing homes**
 - 966 in Hospital
 - 189 in Community Hospitals/Long stay units
 - 118 in Residential institution
 - 277 in other locations

* A death linked to an outbreak in a particular setting does not of itself indicate that transmission occurred within that setting. A case may be detected as part of an outbreak investigation, and associated with an outbreak, despite exposure and transmission having occurred elsewhere.

Conclusion:

Cases and daily admission of COVID-19 patients continue to decrease, while the number of people with COVID in critical care remains stable.

Just under an estimated 35,000 cases (PCR and Antigen) were reported in the last 7 days. This is a 41% decrease on the previous 7 days, with both PCR positives (down 42%), antigen positives (down 40%) decreasing. Caution should be exercised when considering case numbers as they are almost certainly underreported. The total number of people with confirmed COVID-19 in hospital and new confirmed COVID cases in hospital in the previous 24 hours are trending down.

Hospital acquired COVID and number of confirmed COVID cases in hospital staff remain high, but have decreased from a recent peak.

Ireland's vaccination rates continue to compare favourably with the EU/EEA.