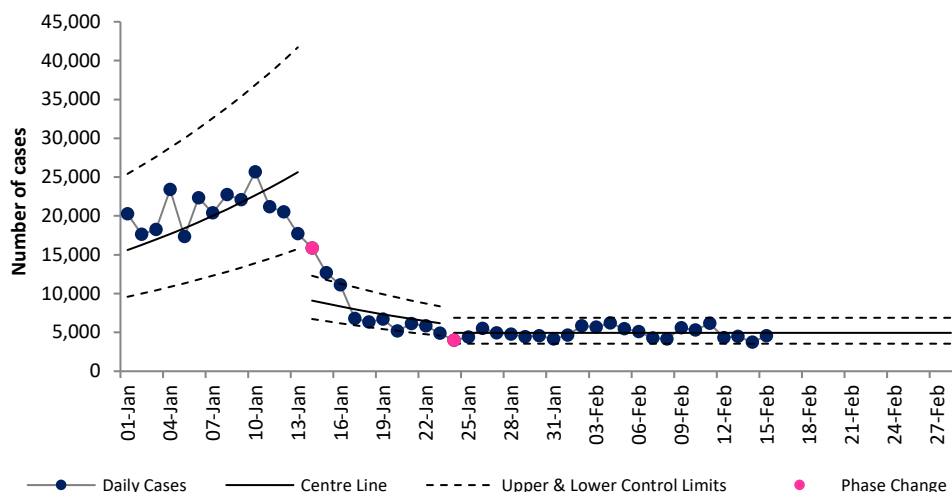


COVID-19 Data Summary, Wednesday 16th February 2022

Weekly Report on COVID-19 Statistical Process Control Charts

16th February 2022

Daily COVID-19 Reported Cases

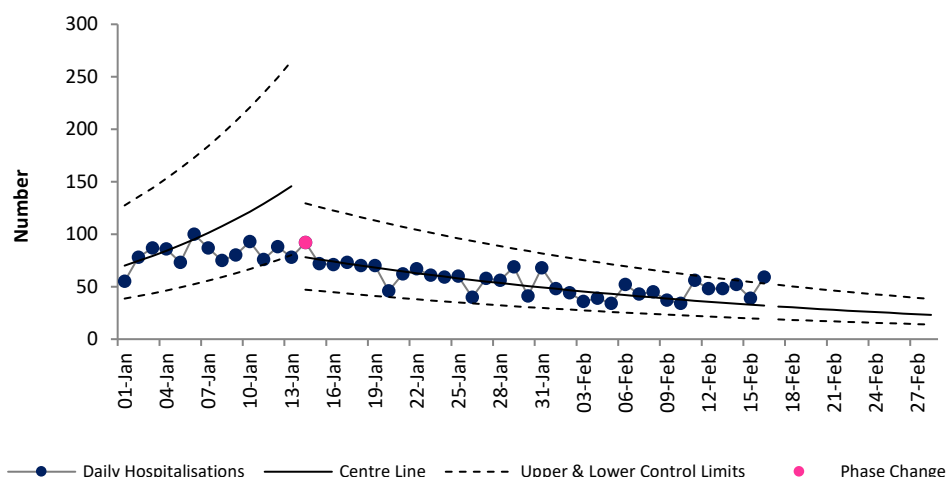


Epoch 3: Plateau or Descent in Daily Reported Cases

From 24th Dec the number of daily cases increased rapidly and we entered Epoch 2, rapid growth. Cases continued to increase and we remained in the rapid growth phase until 13th January. **On 14th January we entered Epoch 3 (plateau or descent in daily reported cases).** On 24th January we entered a plateau with 4,943 daily cases expected based on current data.

Note: This data is based on positive PCR tests only and does not include positive antigen tests. There was a change in policy on 14th January with people aged 4-39 years no longer requiring a confirmatory PCR after a positive antigen test.

Daily new hospital admissions of COVID-19 positive patients



Epoch 3: Plateau or Descent in Daily Reported Hospitalisations

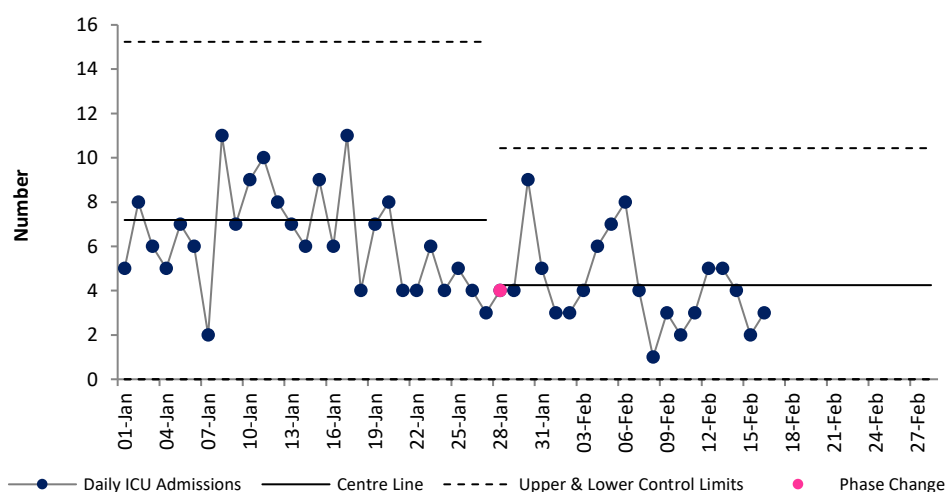
From 17th Dec Ireland entered epoch 2 experiencing rapid growth in daily hospital admissions.

The number of daily hospital admissions continued to increase and we remained in the rapid growth phase until 13th January.

From 14th January we have returned to Epoch 3 (plateau or descent in daily hospital admissions), and admissions are now trending downwards.

We would expect 23 admissions on the 28th of Feb, based on current data.

Daily admissions to ICU of COVID-19 positive patients



Epoch 4: Stability after descent in daily reported ICU admissions

The number of new ICU admissions per day of COVID positive patients had been trending downwards since January 2021. From 18th August to 21st Nov ICU admissions remained stable but a higher level than preceding weeks (4.8 per day).

From 22nd Nov onward ICU admissions increased to 7.2 per day (50 a week).

Since 28th Jan the average number of expected ICU admissions decreased to 4.25 per day (30 a week).

Note that due to the cyber attack data on daily notified deaths of people with COVID-19 are not currently available. For more information on the methodology used above and the team behind the development of this SPC approach see <https://www.hse.ie/eng/about/who/qid/covid-19-qi-learning/resources-developed-to-support-the-national-covid19-response/understanding-variation-in-key-covid-19-indicators-in-ireland-using-statistical-process-control-shewhart-charts.pdf>