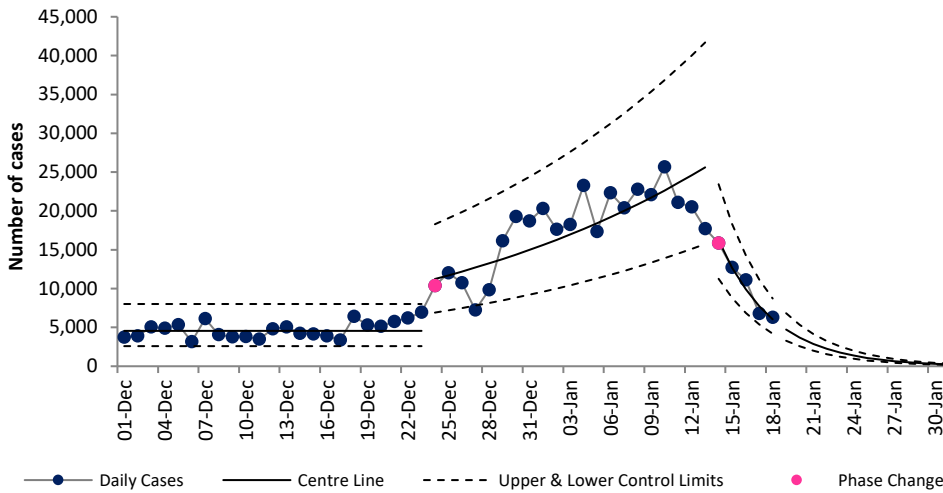


# COVID-19 Data Summary, Wednesday 19<sup>th</sup> January 2022

## Weekly Report on COVID-19 Statistical Process Control Charts

19<sup>th</sup> January 2021

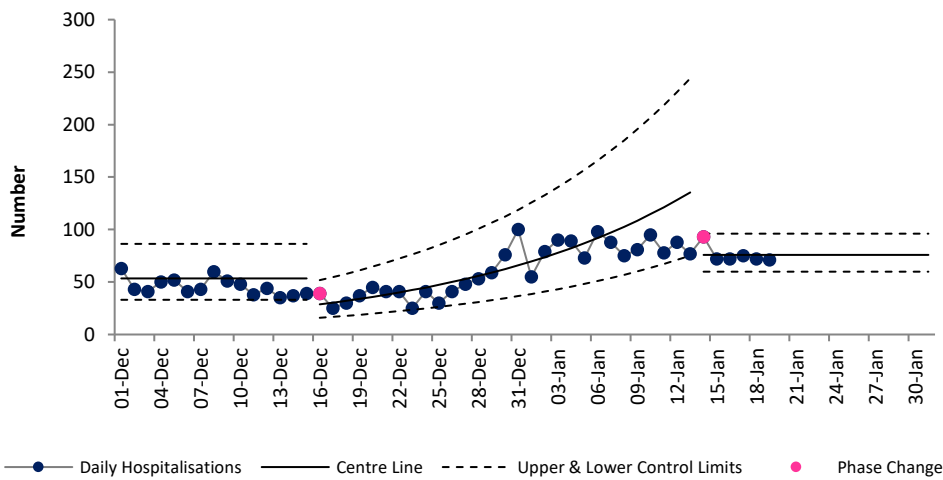
**Daily COVID-19 Reported Cases**



**Epoch 3: Plateau or Descent in Daily Reported Cases**

**From 24<sup>th</sup> Dec** the number of daily cases increased rapidly and we entered Epoch 2, rapid growth. Cases continued to increase and we remained in the rapid growth phase until 13<sup>th</sup> January, but from 14<sup>th</sup> January we have been in Epoch 3 (plateau or descent in daily reported cases).

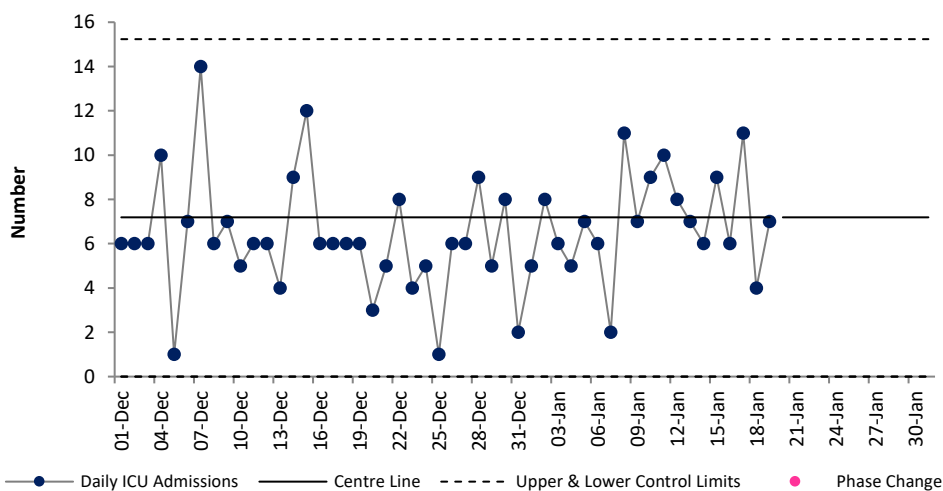
**Daily new hospital admissions of COVID-19 positive patients**



**Epoch 3: Plateau or Descent in Daily Reported Hospitalisations**

**From 16<sup>th</sup> Dec** Ireland entered epoch 2 experiencing rapid growth in daily hospital admissions. The number of daily hospital admissions continued to increase and we remained in the rapid growth phase until 13<sup>th</sup> January. From 14<sup>th</sup> January we have returned to Epoch 3 (plateau or descent in daily hospital admissions), although at a higher level than 1<sup>st</sup>-15<sup>th</sup> December. Based on current data we can expect to continue to see an average of 76 new hospital admissions per day.

**Daily admissions to ICU of COVID-19 positive patients**



**Epoch 4: Stability after descent in daily reported ICU admissions**

The number of new ICU admissions per day of COVID positive patients had been trending downwards since January 2021. From 18<sup>th</sup> August to 21<sup>st</sup> Nov ICU admissions remained stable but a higher level than preceding weeks (4.8 per day). From 22<sup>nd</sup> Nov onward ICU admissions increased to **7.2 per day (50 a week)**. While the absolute number of expected admissions has increased, it does not yet meet the threshold for rapid growth and thus remains stable at that higher level.

Note that due to the cyber attack data on daily notified deaths of people with COVID-19 are not currently available. For more information on the methodology used above and the team behind the development of this SPC approach see <https://www.hse.ie/eng/about/who/qid/covid-19-qi-learning/resources-developed-to-support-the-national-covid19-response/understanding-variation-in-key-covid-19-indicators-in-ireland-using-statistical-process-control-shewhart-charts.pdf>