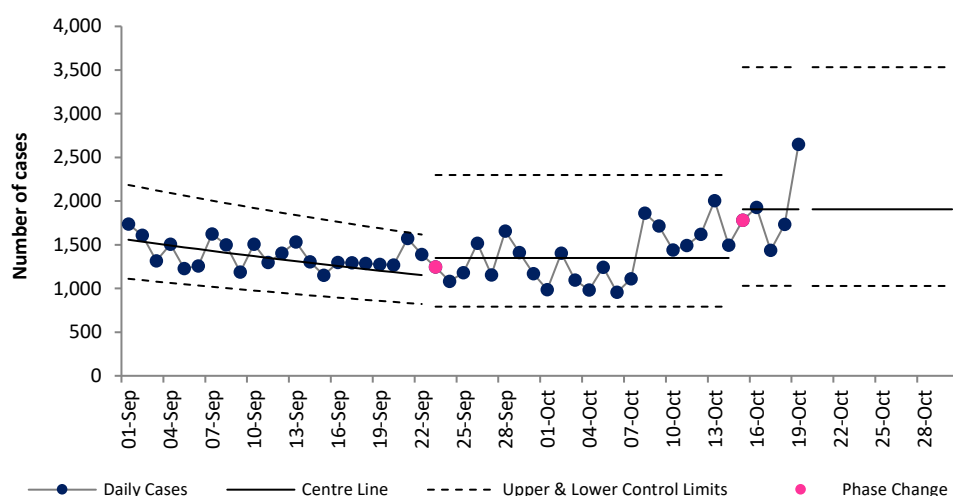


# COVID-19 Data Summary, Wednesday 20th October 2021

## Weekly Report on COVID-19 Statistical Process Control Charts

20 October 2021

Daily COVID-19 Reported Cases



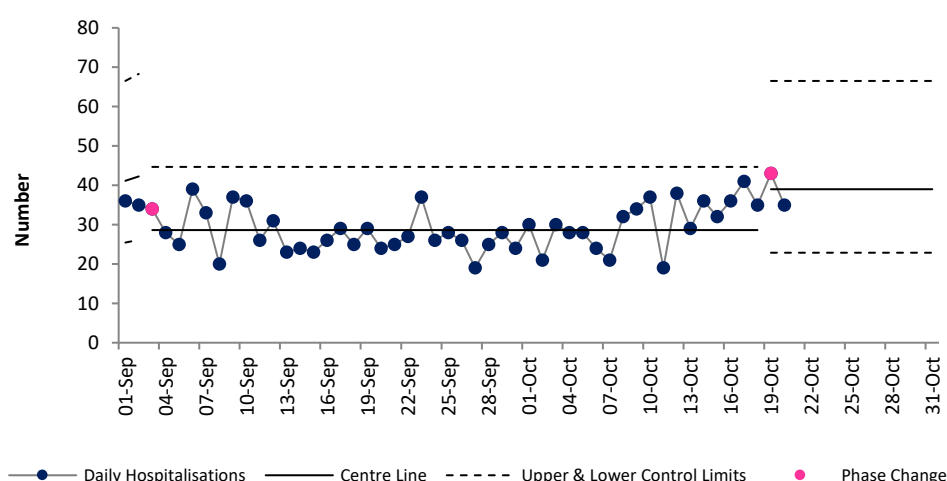
### Epoch 3: Plateau or descent in daily reported cases

The number of new cases reported per day had been increasing (i.e. in the growth phase / Epoch 2) between 12<sup>th</sup> June & 15<sup>th</sup> August. Cases then decreased (i.e. the Plateau or descent phase/ Epoch3) between 16<sup>th</sup> August and 22<sup>nd</sup> September.

**From 23<sup>rd</sup> September to 14<sup>th</sup> October cases remained in Epoch 3, stable but at a higher level. From 15<sup>th</sup> October we again see cases remaining in Epoch 3 (stability) but at a higher level again.**

Based on data up to 20<sup>th</sup> October we would expect to continue to see an average of 1,906 new cases per day.

Daily new hospital admissions of COVID-19 positive patients

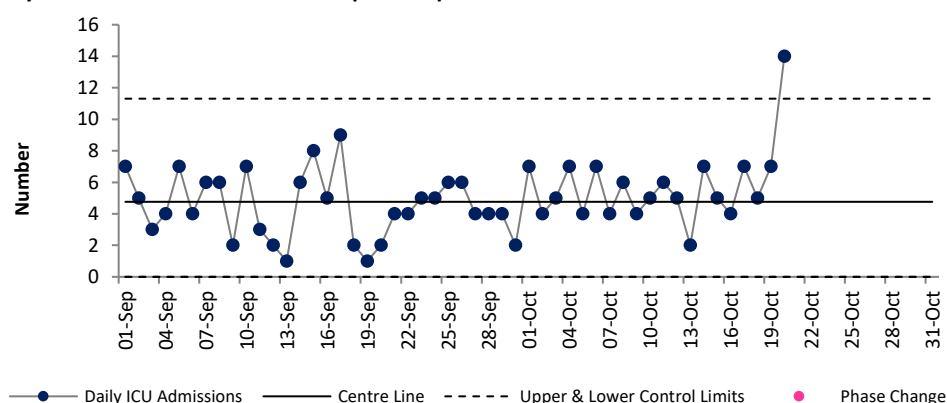


### Epoch 3: Plateau or descent in daily reported hospital admissions

The number of new hospitalisations per day of COVID positive patients had been trending upwards until 2<sup>nd</sup> September (i.e. in Epoch 2, growth phase), during which time the average increased from 16 admissions per day on 1<sup>st</sup> August to 42 admissions per day by 2<sup>nd</sup> September.

There was signal of a reduction from 3<sup>rd</sup> Sept and admissions entered Epoch 3 (plateau or descent phase). Since Oct 19<sup>th</sup> admissions have been stable but at a higher level. Based on the current data we can expect to continue to see an average of 39 hospital admissions of COVID positive patients per day.

Daily admissions to ICU of COVID-19 positive patients



### Epoch 4: Stability after descent in daily reported ICU admissions

The number of new ICU admissions per day of COVID positive patients had been trending downwards since January.

There was a signal of a reduction in the average number of new ICU admissions of COVID positive patients per day from 1.3 since 30<sup>th</sup> April to 0.6 per day since 10<sup>th</sup> June.

From 25<sup>th</sup> July to 17<sup>th</sup> August ICU admissions remained stable at a higher level than in preceding weeks (3.3 per day).

From 18<sup>th</sup> August ICU admissions remain stable but again at a higher level than preceding weeks. We can expect an average of 4.8 admissions per day. **Outlying value of 14 admissions was recorded on Oct 20<sup>th</sup>.**

Note that due to the cyber attack data on daily notified deaths of people with COVID-19 are not currently available. For more information on the methodology used above and the team behind the development of this SPC approach see <https://www.hse.ie/eng/about/who/qid/covid-19-qj-learning/resources-developed-to-support-the-national-covid19-response/understanding-variation-in-key-covid-19-indicators-in-ireland-using-statistical-process-control-shewhart-charts.pdf>