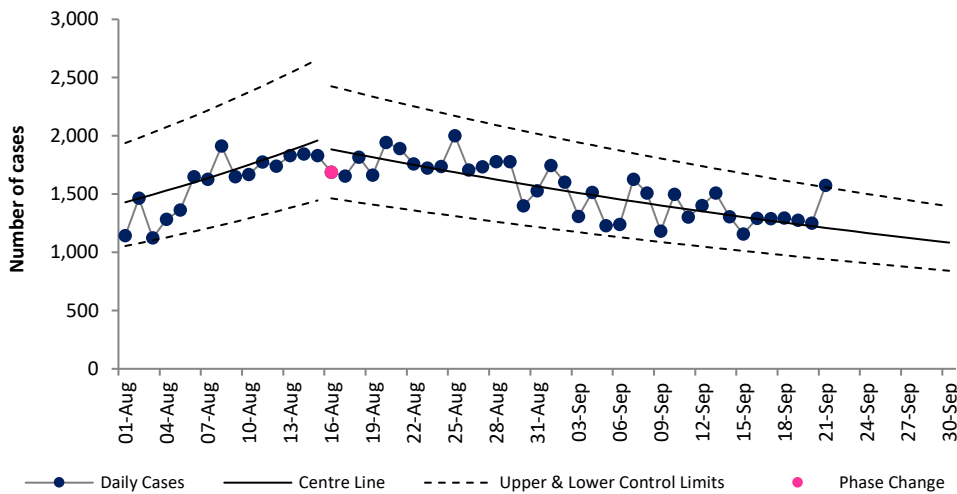


# COVID-19 Data Summary, Wednesday 22<sup>nd</sup> September 2021

## Weekly Report on COVID-19 Statistical Process Control Charts

22 September 2021

Daily COVID-19 Reported Cases



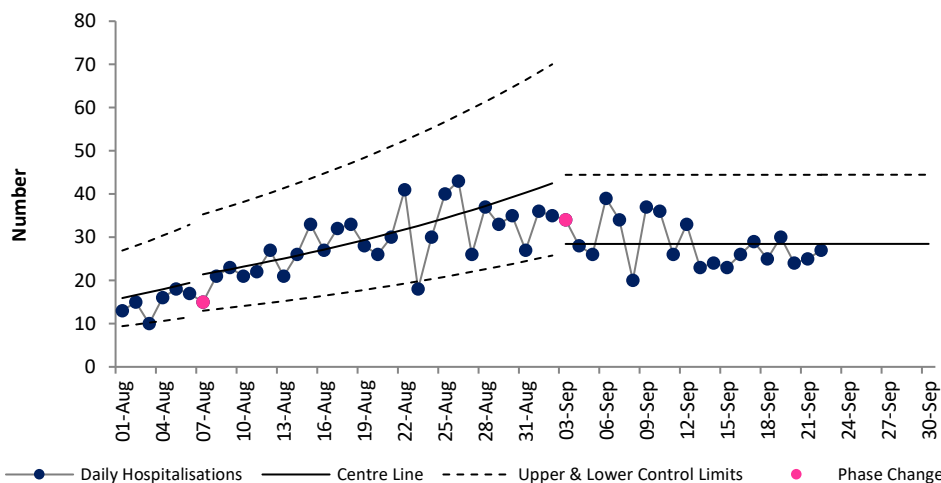
**Epoch 3: Plateau or descent in daily reported cases**

The number of new cases reported per day has decreased (i.e. in the Plateau or descent phase/ Epoch3) since 16<sup>th</sup> August after being in Epoch 2 (growth phase) since 12<sup>th</sup> June.

Cases increased from 13<sup>th</sup> July, from an average of 928 per day to 1,957 per day on 15<sup>th</sup> August.

Since then cases have been decreasing to an average of 1,210 on 21<sup>st</sup> Sept. Based on current data we would expect cases to continue to trend downwards to an average of 1,083 cases by 30<sup>th</sup> Sept.

Daily new hospital admissions of COVID-19 positive patients

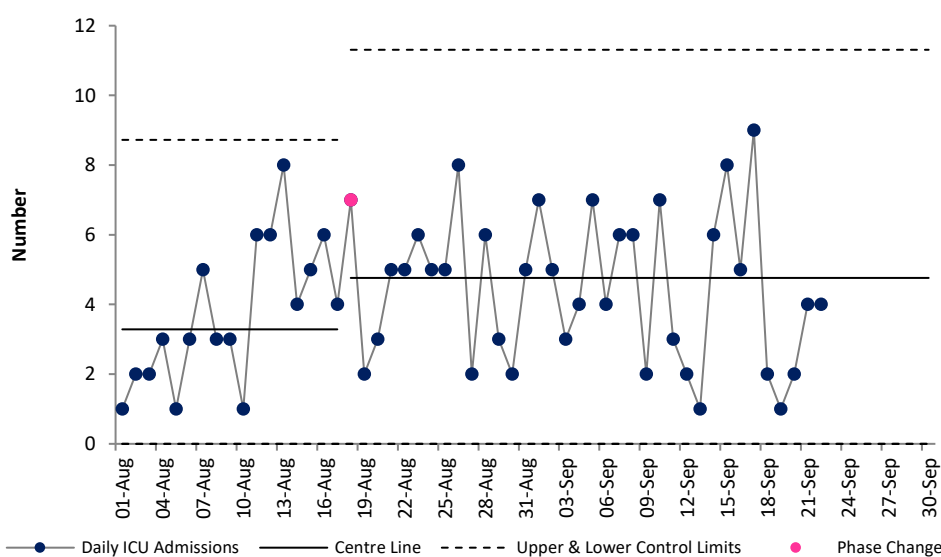


**Epoch 3: Plateau or descent in daily reported hospital admissions**

The number of new hospitalisations per day of COVID positive patients had been trending upwards until 2<sup>nd</sup> September (i.e. in Epoch 2, growth phase), during which time the average increased from 16 admissions per day on 1<sup>st</sup> August to 42 admissions per day by 2<sup>nd</sup> September.

There was signal of a reduction since 3<sup>rd</sup> Sept, and the number is now stable and in Epoch 3 (plateau or descent phase). Based on the current data we can expect to continue to see an average of 28 hospital admissions of COVID positive patients per day.

Daily admissions to ICU of COVID-19 positive patients



**Epoch 4: Stability after descent in daily reported ICU admissions**

The number of new ICU admissions per day of COVID positive patients had been trending downwards since January.

There was a signal of a reduction in the average number of new ICU admissions of COVID positive patients per day from 1.3 since 30<sup>th</sup> April to 0.6 per day since 10<sup>th</sup> June.

From 25<sup>th</sup> July to 17<sup>th</sup> August ICU admissions remained stable at a higher level than in preceding weeks (3.3 per day).

From 18<sup>th</sup> August ICU admissions remain stable but again at a higher level than preceding weeks. We can expect an average of 4.8 admissions per day.

Note that due to the cyber attack data on daily notified deaths of people with COVID-19 are not currently available. For more information on the methodology used above and the team behind the development of this SPC approach see <https://www.hse.ie/eng/about/who/qid/covid-19-qj-learning/resources-developed-to-support-the-national-covid19-response/understanding-variation-in-key-covid-19-indicators-in-ireland-using-statistical-process-control-shewhart-charts.pdf>