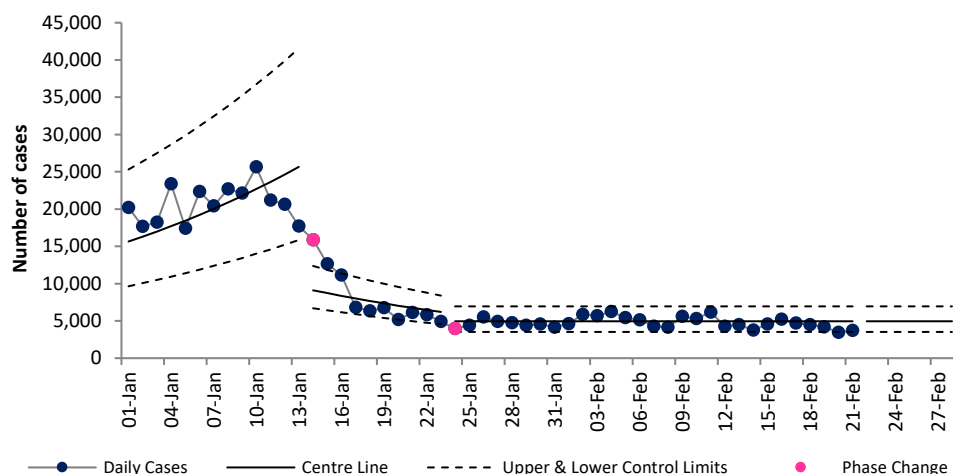


# COVID-19 Data Summary, Wednesday 23<sup>rd</sup> February 2022

## Weekly Report on COVID-19 Statistical Process Control Charts

23<sup>rd</sup> February 2022

**Daily COVID-19 Reported Cases**

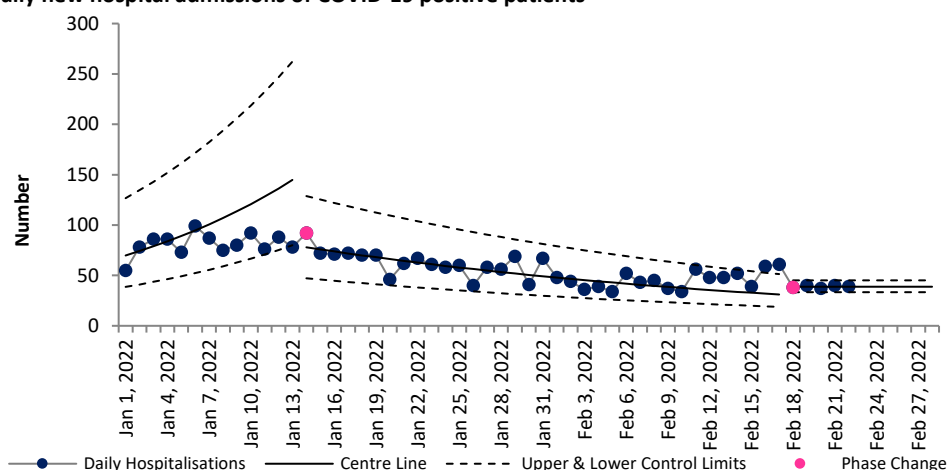


### Epoch 3: Plateau or Descent in Daily Reported Cases

**From 24<sup>th</sup> Dec** the number of daily cases increased rapidly and we entered Epoch 2, rapid growth. Cases continued to increase and we remained in the rapid growth phase until 13<sup>th</sup> January. **On 14<sup>th</sup> January we entered Epoch 3 (plateau or descent in daily reported cases).** On 24<sup>th</sup> January we entered a plateau with 4,948 daily cases expected based on current data.

Note: This data is based on positive PCR tests only and does not include positive antigen tests. There was a change in policy on 14<sup>th</sup> January with people aged 4-39 years no longer requiring a confirmatory PCR after a positive antigen test.

**Daily new hospital admissions of COVID-19 positive patients**



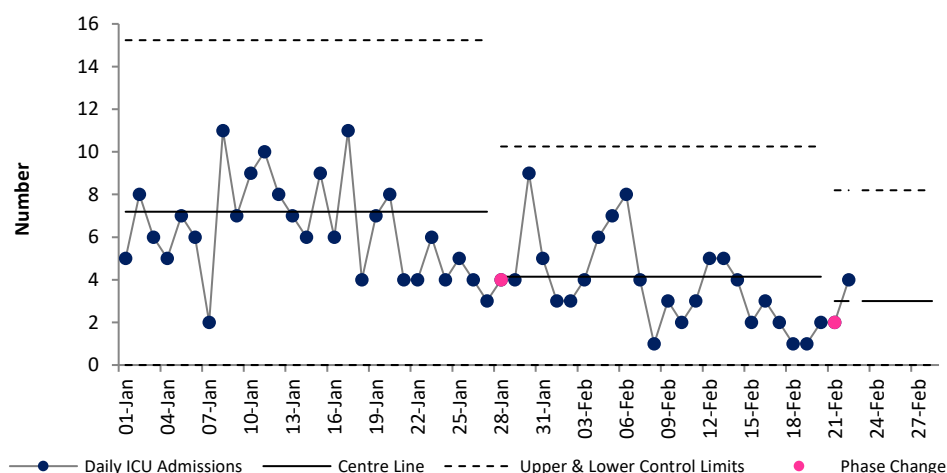
### Epoch 3: Plateau or Descent in Daily Reported Hospitalisations

**From 17<sup>th</sup> Dec** Ireland entered epoch 2 experiencing rapid growth in daily hospital admissions.

The number of daily hospital admissions continued to increase and we remained in the rapid growth phase until 13<sup>th</sup> January.

**From 14<sup>th</sup> January we have returned to Epoch 3 (plateau or descent in daily hospital admissions), and admissions trended downwards.** On 18<sup>th</sup> February we entered a plateau with 39 admissions expected per day (273 a week).

**Daily admissions to ICU of COVID-19 positive patients**



### Epoch 4: Stability after descent in daily reported ICU admissions

The number of new ICU admissions per day of COVID positive patients had been trending downwards since January 2021. From 18<sup>th</sup> August to 21<sup>st</sup> Nov 2021 ICU admissions remained stable but a higher level than preceding weeks (4.8 per day).

From 22<sup>nd</sup> Nov 2021 to 27<sup>th</sup> Jan 2022 ICU admissions increased to 7.2 per day (50 a week).

From the 28<sup>th</sup> Jan to 20<sup>th</sup> Jan the average number of expected ICU admissions decreased to 4.15 per day (30 a week).

**From 21<sup>st</sup> Jan the average number of expected ICU admissions stabilised at a lower rate of 3 per day (21 a week).**

Note that due to the cyber attack data on daily notified deaths of people with COVID-19 are not currently available.

For more information on the methodology used above and the team behind the development of this SPC approach see

<https://www.hse.ie/eng/about/who/qid/covid-19-qi-learning/resources-developed-to-support-the-national-covid19-response/understanding-variation-in-key-covid-19-indicators-in-ireland-using-statistical-process-control-shewhart-charts.pdf>