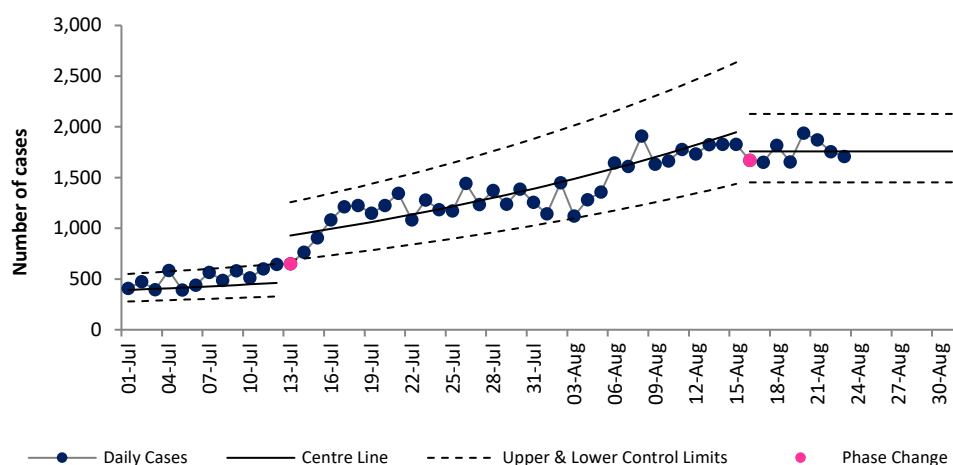


COVID-19 Data Summary, Wednesday 25th August 2021

Weekly Report on COVID-19 Statistical Process Control Charts

25th August 2021

Daily COVID-19 Reported Cases



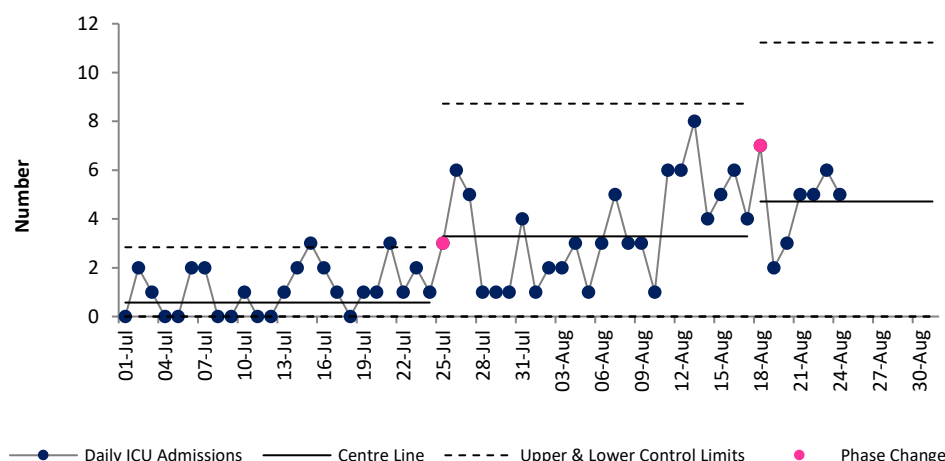
Epoch 3: Plateau or descent in daily reported cases

The latest data indicates that the number of new cases reported per day has plateaued (i.e. in the Plateau or descent phase/ Epoch3) since 15th August after being in Epoch 2 (growth phase) since 12th June.

Cases increased from 13th July, from an average of 928 per day to 1,903 per day on 14th August.

Since then (from 15th August) cases have been stable and based on current data we would expect to continue to see an average of 1758 cases a day.

Daily admissions to ICU of COVID-19 positive patients



Epoch 4: Stability after descent in daily reported ICU admissions

The number of new ICU admissions per day of COVID positive patients had been trending downwards since January.

There was a signal of a reduction in the average number of new ICU admissions of COVID positive patients per day from 1.3 since 30th April to 0.6 per day since 10th June.

From 25th July to 17th August ICU admissions remained stable at a higher level than in preceding weeks (3.3 per day).

From 18th August ICU admissions remain stable but again at a higher level than preceding weeks. We can expect an average of 4.7 admissions per day.

Note that due to the cyber attack data on daily new hospital admissions of COVID-19 positive patients and daily notified deaths of people with COVID-19 are not currently available.

For more information on the methodology used above and the team behind the development of this SPC approach see <https://www.hse.ie/eng/about/who/qid/covid-19-qi-learning/resources-developed-to-support-the-national-covid19-response/understanding-variation-in-key-covid-19-indicators-in-ireland-using-statistical-process-control-shewhart-charts.pdf>