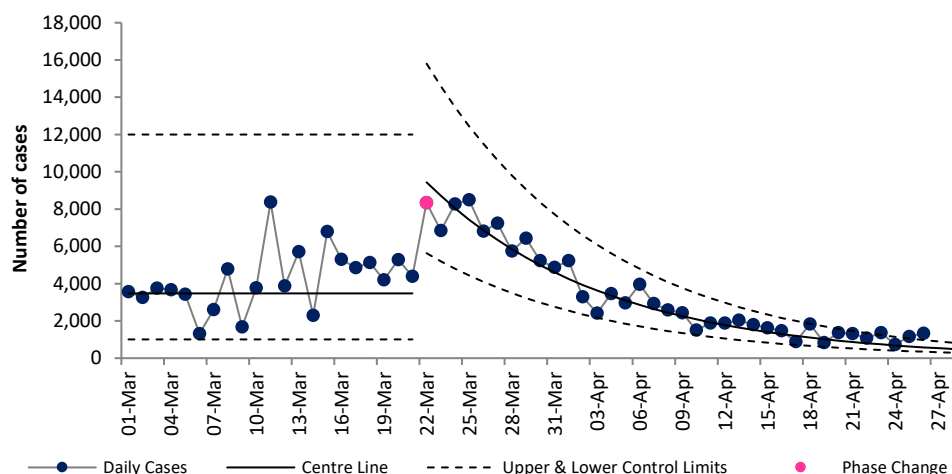


COVID-19 Data Summary, Wednesday 27th April 2022

Weekly Report on COVID-19 Statistical Process Control Charts

27th April 2022

Daily COVID-19 Reported Cases



Epoch 3: Plateau or Descent in Daily Reported Cases

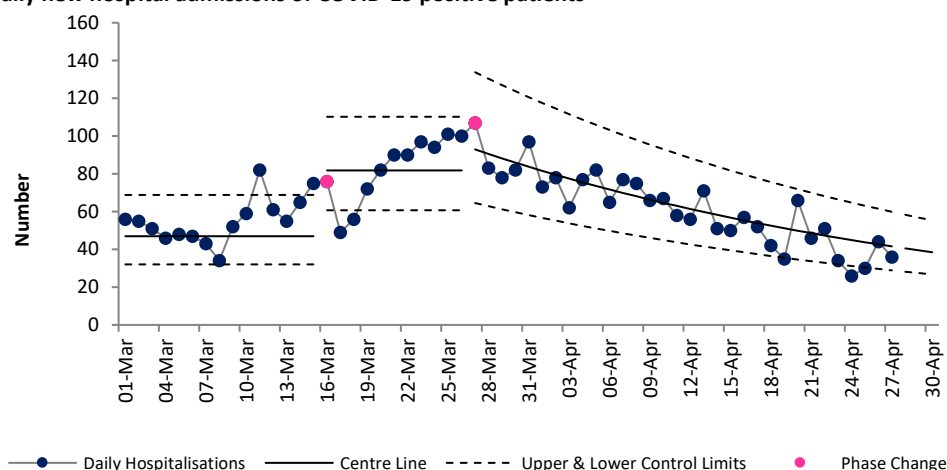
From 24th Dec the number of daily cases increased rapidly and we entered Epoch 2, rapid growth.

On 14th January we entered Epoch 3 (plateau or descent in daily reported cases). On 24th January we entered a plateau with 4,955 daily cases expected. From 24th Feb we entered a plateau at a lower level with 3,480 daily cases expected.

From 22nd Mar we entered a decent from a higher level. Based on current data we would expect 424 cases on April 30th.

Note: This data is based on positive PCR tests only and does not include positive antigen tests. There was a change in policy on 14th January with people aged 4-39 years no longer requiring a confirmatory PCR after a positive antigen test and from 28th Feb the requirement to get a PCR test was removed for most people, with the exception of certain groups.

Daily new hospital admissions of COVID-19 positive patients



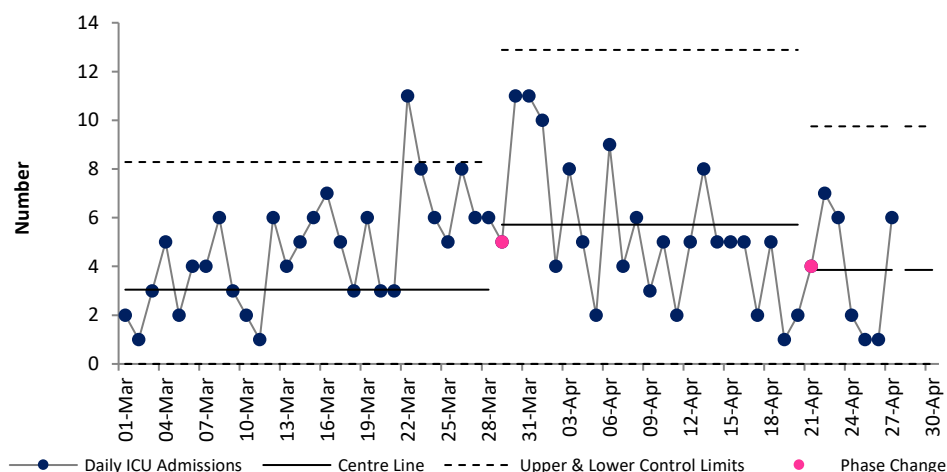
Epoch 3: Plateau or descent in Daily Hospitalisations

From 17th Dec 2021 Ireland entered epoch 2 experiencing rapid growth in daily hospital admissions until 13th January. From 14th January we returned to Epoch 3 (plateau or descent in daily hospital admissions), and admissions trended downwards.

On 18th February we moved to a plateau with an expected average of 47 daily admissions. On 16th March we entered a plateau at higher rate (82 expected daily admissions)

On 27th March we entered a decent with 38 admissions expected on 30th April.

Daily admissions to ICU of COVID-19 positive patients



Epoch 4: Stability after descent in daily reported ICU admissions

From 18th August to 21st Nov 2021 ICU admissions remained stable but a higher level than preceding weeks (4.8 per day).

From 22nd Nov 2021 to 27th Jan 2022 ICU admissions increased to 7.2 per day. From the 28th Jan to 20th Feb they decreased to 4.1 per day, then From 21st Feb to 28th Mar they decreased further to 3 per day.

From 29th March the average number of expected ICU admissions increased to 5.7 per day (40 per week).

From 21st April the average number of expected ICU admissions decreased to 3.9 per day (27 per week)

Note that due to the cyber attack data on daily notified deaths of people with COVID-19 are not currently available.

For more information on the methodology used above and the team behind the development of this SPC approach see <https://www.hse.ie/eng/about/who/qid/covid-19-qi-learning/resources-developed-to-support-the-national-covid19-response/understanding-variation-in-key-covid-19-indicators-in-ireland-using-statistical-process-control-shewhart-charts.pdf>