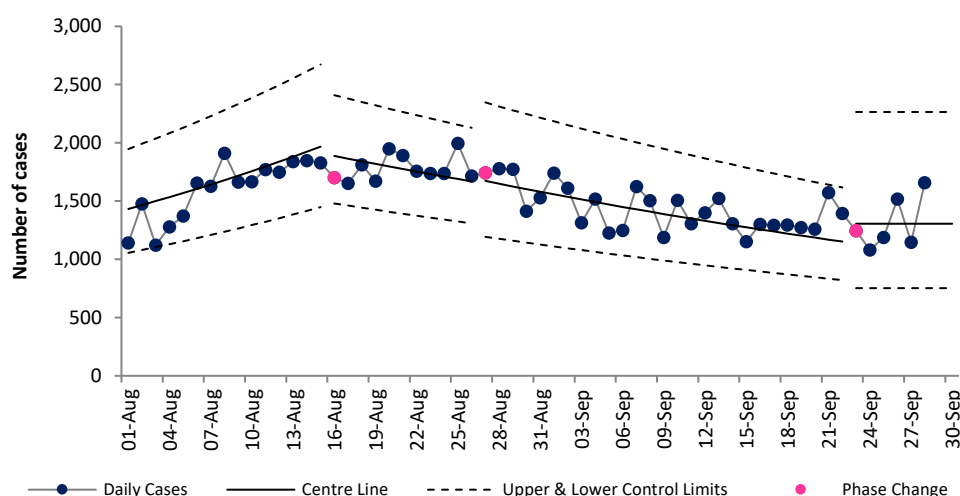


COVID-19 Data Summary, Wednesday 29th September 2021

Weekly Report on COVID-19 Statistical Process Control Charts

29 September 2021

Daily COVID-19 Reported Cases

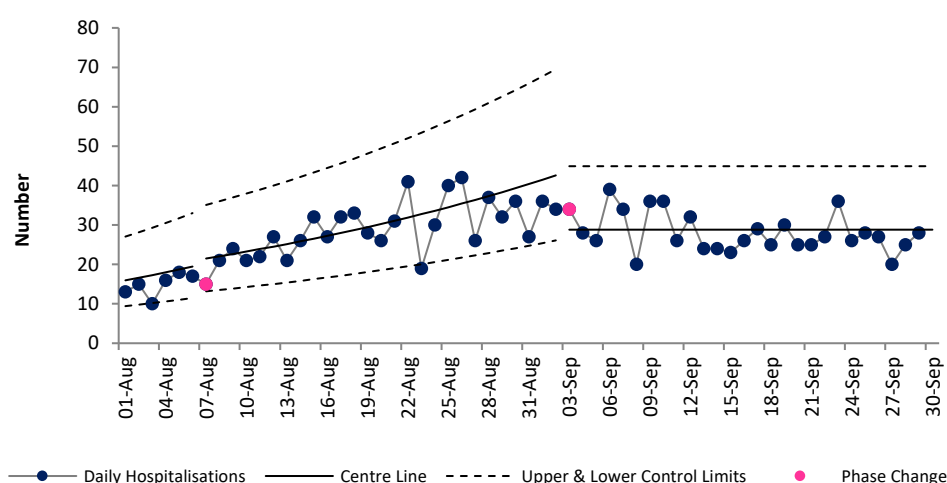


Epoch 3: Plateau or descent in daily reported cases

The number of new cases reported per day had been increasing (i.e. in the growth phase / Epoch 2) between 12th June & 15th August. Cases then decreased (i.e. the Plateau or descent phase/ Epoch3) between 16th August and 22nd September.

Since 23rd September cases remain in Epoch 3 but are no longer descending and are now stable at an average of 1,306 new cases per day. Based on current data we would expect to continue to see an average of 1,306 new cases per day.

Daily new hospital admissions of COVID-19 positive patients

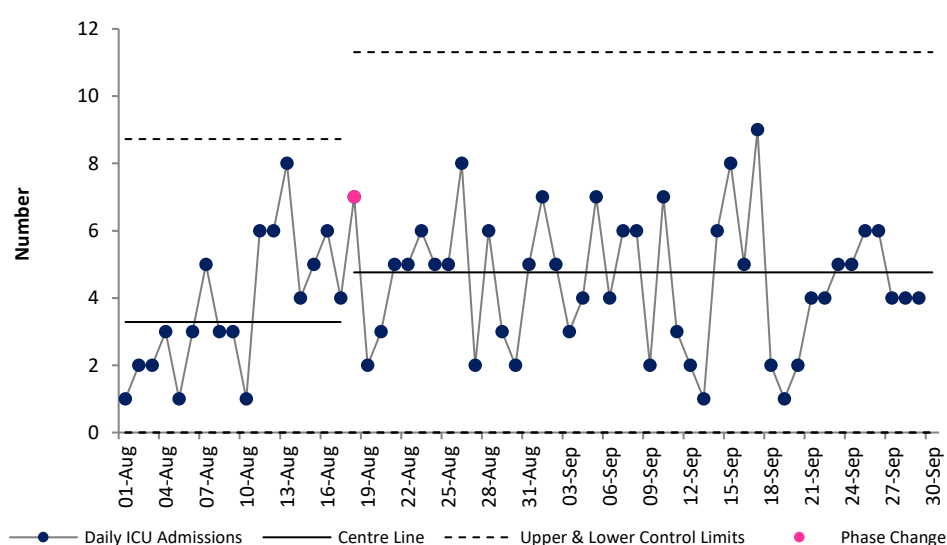


Epoch 3: Plateau or descent in daily reported hospital admissions

The number of new hospitalisations per day of COVID positive patients had been trending upwards until 2nd September (i.e. in Epoch 2, growth phase), during which time the average increased from 16 admissions per day on 1st August to 42 admissions per day by 2nd September.

There was signal of a reduction since 3rd Sept, and the number is now stable and in Epoch 3 (plateau or descent phase). Based on the current data we can expect to continue to see an average of 29 hospital admissions of COVID positive patients per day.

Daily admissions to ICU of COVID-19 positive patients



Epoch 4: Stability after descent in daily reported ICU admissions

The number of new ICU admissions per day of COVID positive patients had been trending downwards since January.

There was a signal of a reduction in the average number of new ICU admissions of COVID positive patients per day from 1.3 since 30th April to 0.6 per day since 10th June.

From 25th July to 17th August ICU admissions remained stable at a higher level than in preceding weeks (3.3 per day).

From 18th August ICU admissions remain stable but again at a higher level than preceding weeks. We can expect an average of 4.8 admissions per day.

Note that due to the cyber attack data on daily notified deaths of people with COVID-19 are not currently available. For more information on the methodology used above and the team behind the development of this SPC approach see <https://www.hse.ie/eng/about/who/qid/covid-19-qj-learning/resources-developed-to-support-the-national-covid19-response/understanding-variation-in-key-covid-19-indicators-in-ireland-using-statistical-process-control-shewhart-charts.pdf>