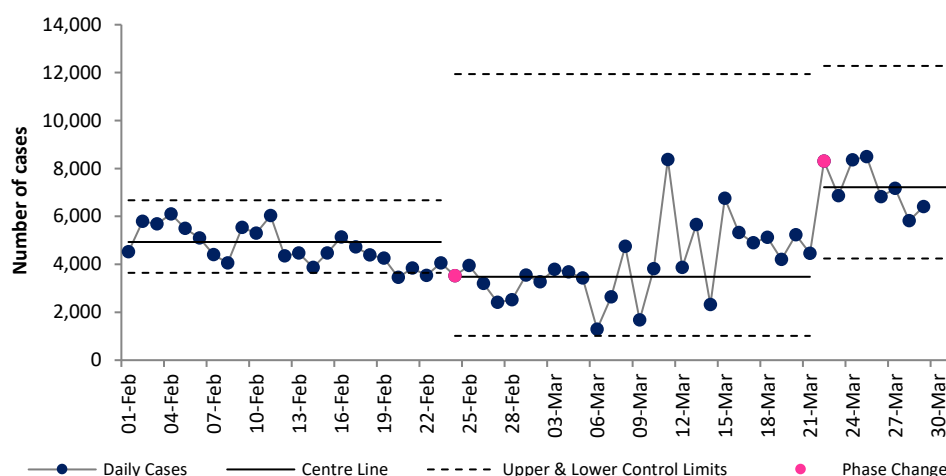


# COVID-19 Data Summary, Wednesday 30<sup>th</sup> March 2022

## Weekly Report on COVID-19 Statistical Process Control Charts

### 30<sup>th</sup> March 2022

Daily COVID-19 Reported Cases



#### Epoch 3: Plateau or Descent in Daily Reported Cases

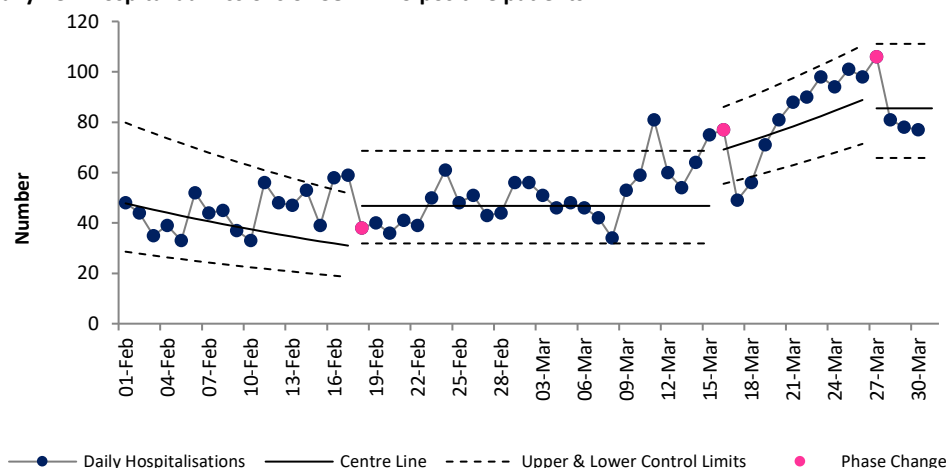
From 24<sup>th</sup> Dec the number of daily cases increased rapidly and we entered Epoch 2, rapid growth.

On 14<sup>th</sup> January we entered Epoch 3 (plateau or descent in daily reported cases). On 24<sup>th</sup> January we entered a plateau with 4,955 daily cases expected.

From 24<sup>th</sup> Feb we entered a plateau at a lower level with 3,107 daily cases expected. From 22<sup>nd</sup> Mar we entered a plateau at a higher level with 7,218 daily cases expected.

Note: This data is based on positive PCR tests only and does not include positive antigen tests. There was a change in policy on 14<sup>th</sup> January with people aged 4-39 years no longer requiring a confirmatory PCR after a positive antigen test and from 28<sup>th</sup> Feb the requirement to get a PCR test was removed for most people, with the exception of certain groups.

Daily new hospital admissions of COVID-19 positive patients



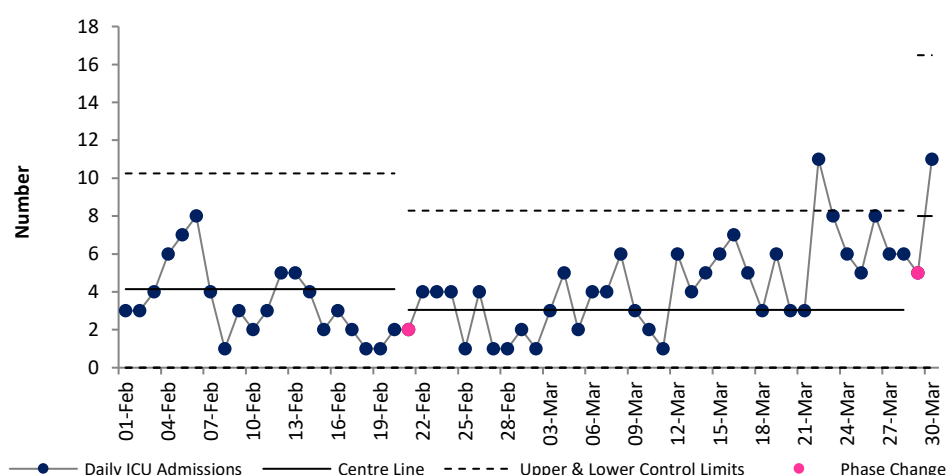
#### Epoch 3: Plateau or descent in Daily Hospitalisations

From 17<sup>th</sup> Dec 2021 Ireland entered epoch 2 experiencing rapid growth in daily hospital admissions until 13<sup>th</sup> January. From 14<sup>th</sup> January we returned to Epoch 3 (plateau or descent in daily hospital admissions), and admissions trended downwards.

On 18<sup>th</sup> February we moved to a plateau with an expected average of 47 daily admissions (329 a week). On 16<sup>th</sup> March we entered a phase of rapid growth.

On 27<sup>th</sup> March we entered a plateau with an expected average of 85.5 daily admissions (599 a week)

Daily admissions to ICU of COVID-19 positive patients



#### Epoch 4: Stability after descent in daily reported ICU admissions

From 18<sup>th</sup> August to 21<sup>st</sup> Nov 2021 ICU admissions remained stable but a higher level than preceding weeks (4.8 per day).

From 22<sup>nd</sup> Nov 2021 to 27<sup>th</sup> Jan 2022 ICU admissions increased to 7.2 per day. From the 28<sup>th</sup> Jan to 20<sup>th</sup> Feb they decreased to 4.1 per day, then From 21<sup>st</sup> Feb to 28<sup>th</sup> Mar they decreased further to 3 per day.

From the 29<sup>th</sup> March the average number of expected ICU admissions increased to 8 per day (56 per week).

11 admissions to ICU on 22<sup>nd</sup> March was higher than expected.

Note that due to the cyber attack data on daily notified deaths of people with COVID-19 are not currently available.

For more information on the methodology used above and the team behind the development of this SPC approach see <https://www.hse.ie/eng/about/who/qid/covid-19-qi-learning/resources-developed-to-support-the-national-covid19-response/understanding-variation-in-key-covid-19-indicators-in-ireland-using-statistical-process-control-shewhart-charts.pdf>