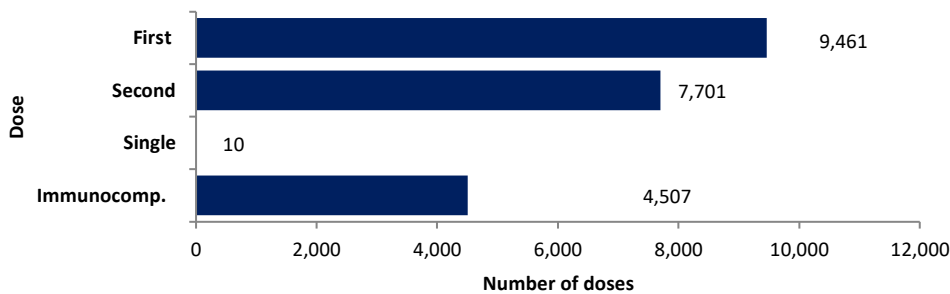


COVID-19 Data Summary, Wednesday 17th November 2021

Introduction:

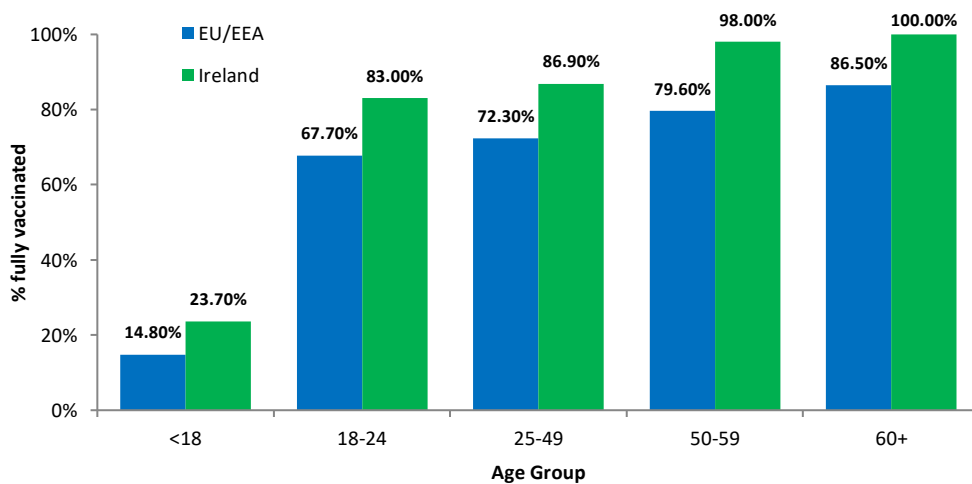
As restrictions are reintroduced and case numbers rise we will continue to monitor the situation closely to predict future pressures on the hospital system and to assess effectiveness of control measures.

Weekly doses of COVID-19 vaccinations, 10th– 16th November



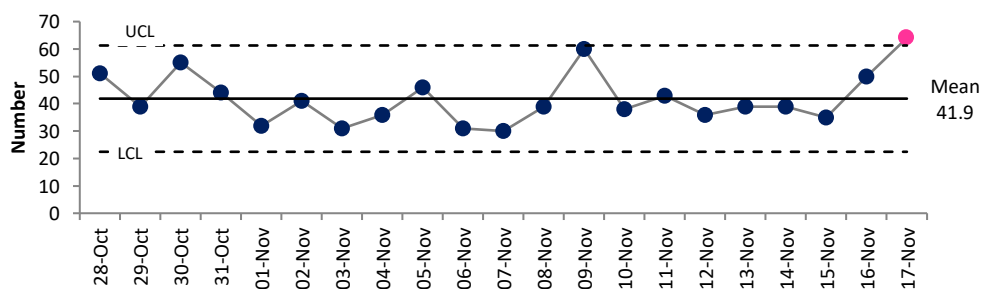
Up to 16th Nov, **7,431,044 COVID vaccine doses have been administered.** In the 7 days up to 16th Oct a total of 21,679 doses were administered, of which 43.6% (9,461) were first doses, 35.5% (7,701) were second doses, 0.05% (10) were single doses and 20.8% (4,507) were additional doses for immunocompromised people.

Cumulative uptake of full vaccination by age group, Ireland & EU/EEA (17th November)



Data from ECDC shows that 76% of adults age 18+ in the EU/EEA have been fully vaccinated, with 65.2% of the total population (including children) fully vaccinated. Uptake rates vary significantly by age group, with Ireland having higher uptake rates across all age groups compared to the EU/EEA.

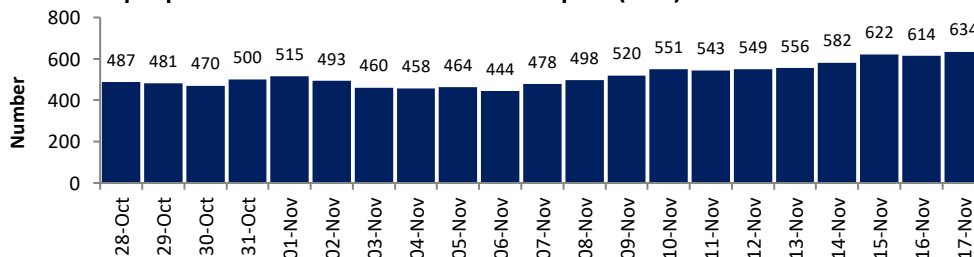
Number of hospital admissions of COVID positive patients during the previous 24 hours



The **SPC chart** shows a **signal of increase** in the number of new admissions of COVID positive patients over the past 3 weeks. **64** admissions today, 17th November exceeded the upper control limit. .

A total of 306 admissions over the past 7 days (**up 9% on the previous week**).

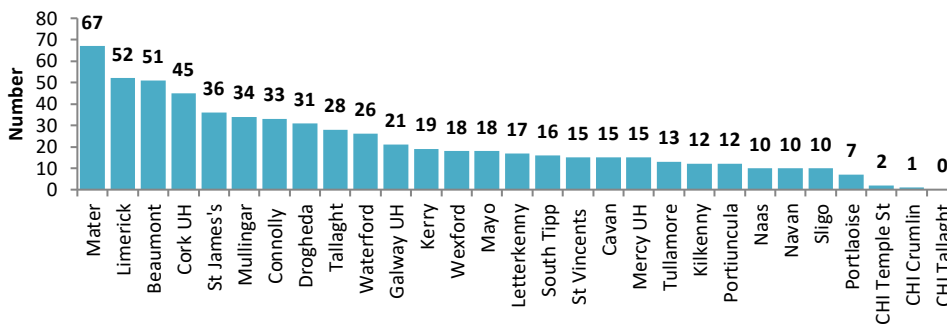
Number of people with confirmed COVID-19 in hospital (8am)



The number of people with COVID in hospital fluctuates by day (usually higher at weekends), and is **trending upwards**.

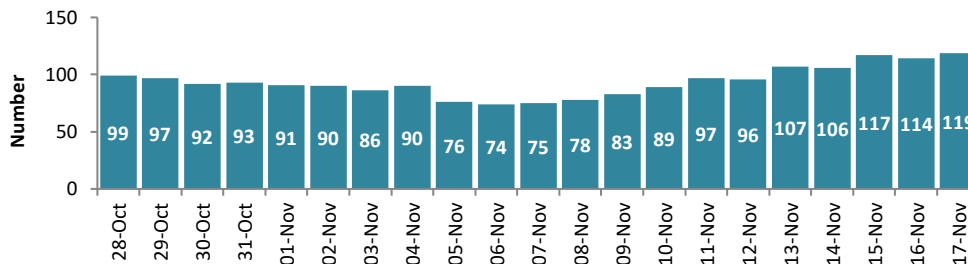
634 in hospital at 8am today, **up 15% on the same day last week**, and up 38% on two weeks ago.

Number of people with confirmed COVID-19 in hospital, by hospital (8am on 17th Nov)



Of the 634 people with confirmed COVID-19 in hospital, **The Mater has the highest number (67 people)**, followed by the Limerick (52), Beaumont (51), Cork UH (45) St.James's (36), and Mullingar (34).

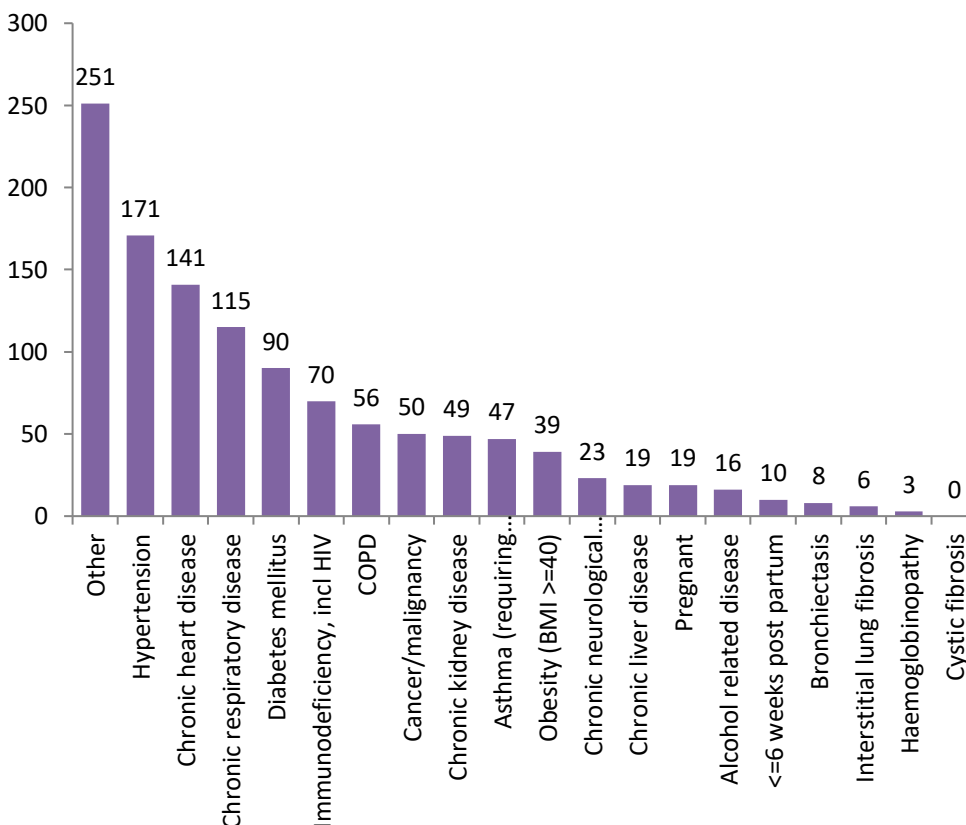
Number of people with COVID-19 in critical care



The number with COVID-19 in critical care is trending upwards. **Up 34%** on this day last week and **up 38% on two weeks ago**.

Currently 119 in ICU (**up 30 on the same day last week**). **12 new admissions today**.

Underlying Conditions of COVID-19 admissions to ICU (27 June – 13 November)

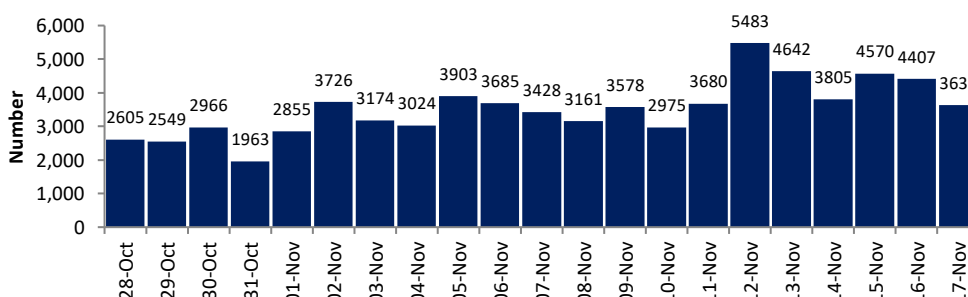


476 people (15+ years) with COVID-19 were admitted to ICU from 27th June to 13th November.

81.3% had one or more underlying medical conditions.

251 (65% of those with underlying medical conditions) had other underlying medical conditions, 171 (44%) had hypertension; 141 (36%) had chronic heart disease, 115 (30%) had chronic respiratory disease, 90 (23%) had diabetes and 70 (18%) had immunodeficiency.

Number of new cases per day (last 3 weeks to Nov 17th)

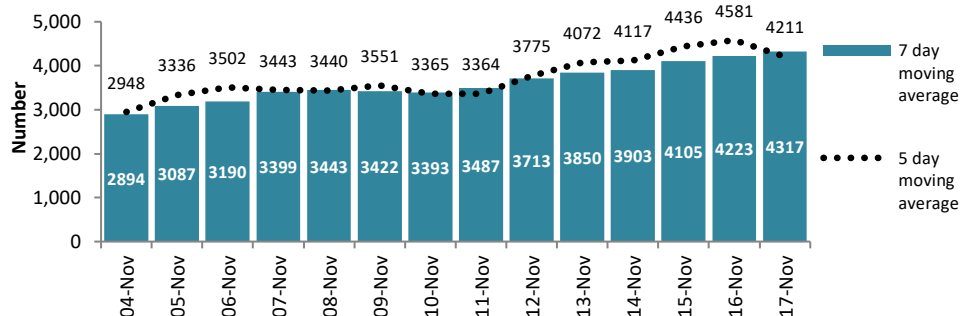


The number of cases fluctuates by day but has increased over the past week.

The **number of new cases in the 7 days to Nov 17th up 27%** on the previous week.

3,633 new cases on Nov 17th.

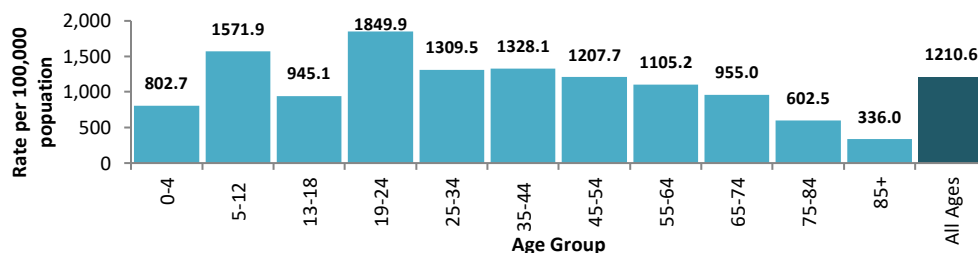
5 and 7 day moving averages of new cases per day (14 days to Nov 17th)



Compared to last week the **5 day average is up 25%** and the **7 day average is up 27%**.

Compared to previous 2 weeks, the **5 day average is up 43%** and the **7 day average is up 52%**.

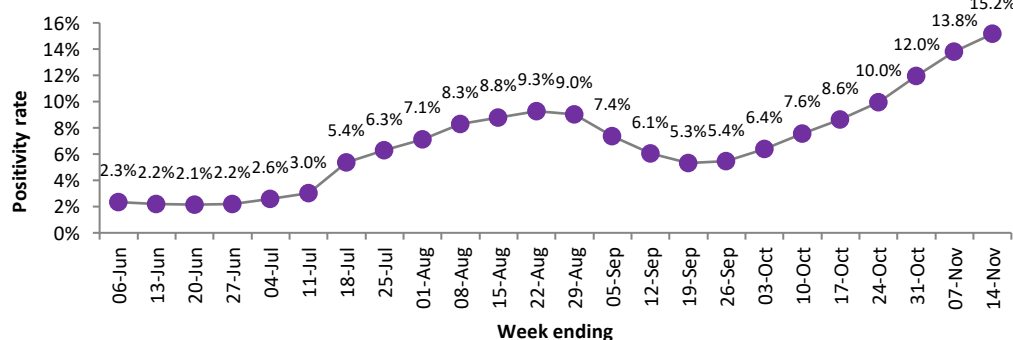
Rate of new cases per 100,000 population by age group notified over the 2 weeks to 16th Nov



Compared to the previous week the **overall 14 day incidence rate is up 27%**. The 14 day incidence rate is **highest among 19-24 year olds (up 26% on previous week)** and **5-12 year olds (up 36% on last week)**. Rates in the **85+ (down 2%) decreased**.

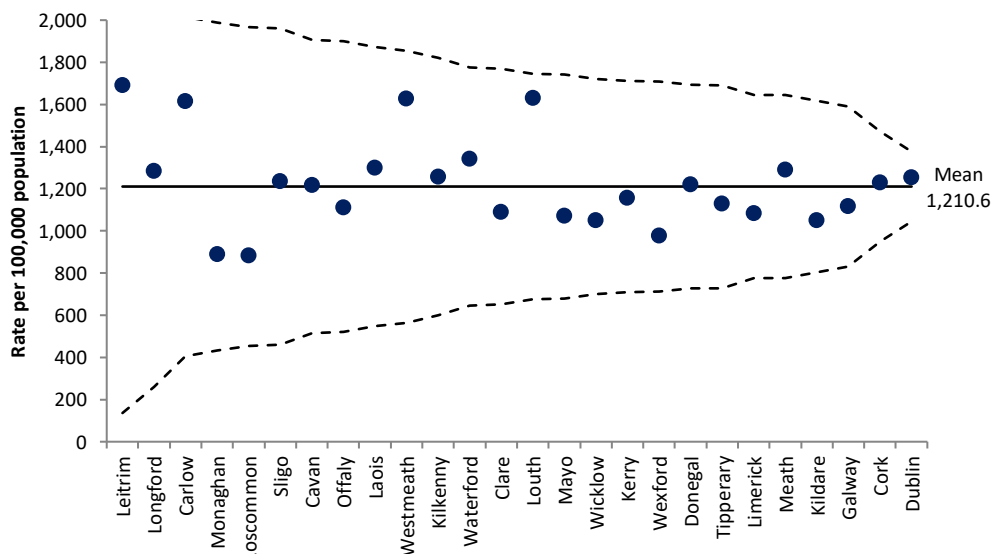
The rates for all other ages groups increased compared to last week.

Positivity rate for COVID-19 tests by week



The positivity rate had been stable at <2.5% during June, but trended upwards to 9.3% for the week ending 22nd August. While the positivity rate decreased for 4 weeks from then, it has since **trended upwards** again to 15.2% for the most recent week (week ending 14th November).

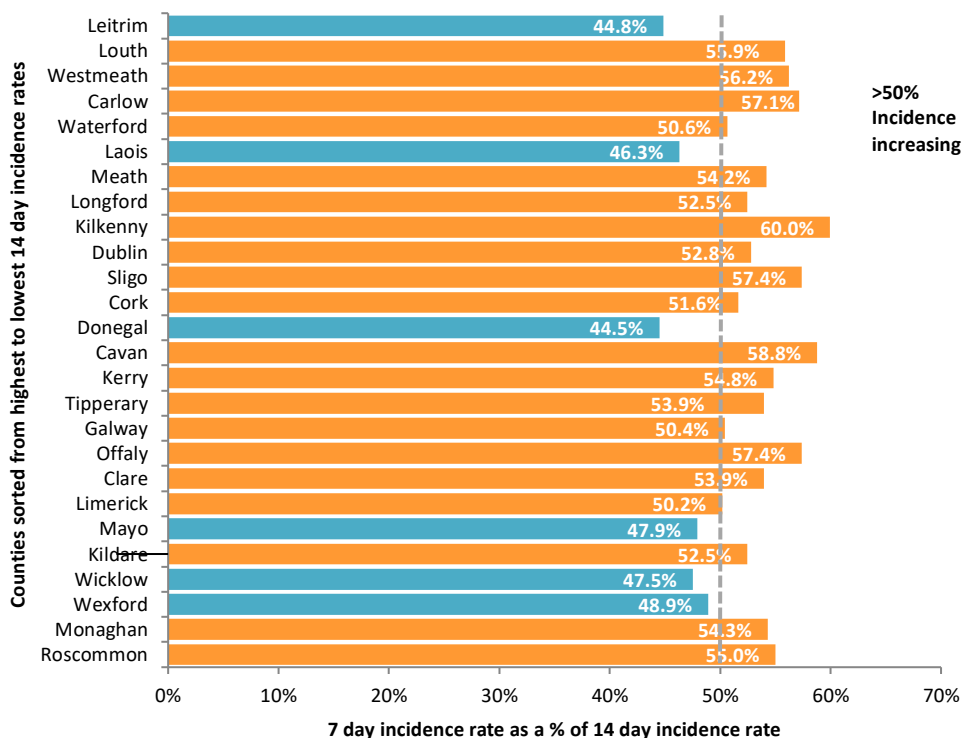
14-day incidence rate per 100,000 population by county notified from 3 – 16 Nov



The SPC funnel plot shows that the rates of new cases in all counties are within the expected range of variation when compared to the national average (1,210.6)

Leitrim (1691.4), Louth (1630.9), Westmeath (1626.7), and Carlow (1614.2) have a high incidence rate but are within the expected range of variation.

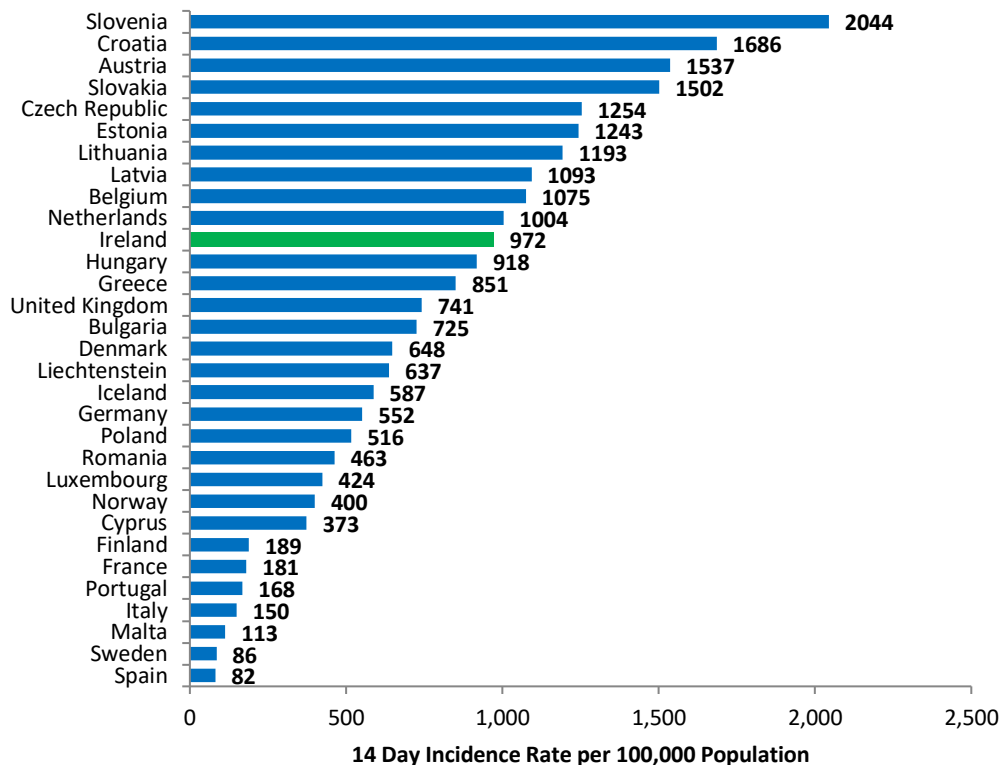
7 day incidence rate as a percentage of 14 day rate, 3 – 16 Nov



The 14 day incidence rate to 16th Nov is 1211 per 100,000 population, while the 7 day incidence rate is 634. **The 7 day rate is more than half (52.4%) of the 14 day rate**; this means that there were **more new cases in the most recent 7 days than in the previous 7 days**.

At county level, the 7 day rates for **20 of the 26 counties are greater** than half of the 14 day rates. This is an improvement on the same as this day last week when all 26 counties were greater than the half of the 14 day rates.

14-day COVID-19 rates per 100,000 population EU/EEA & UK (WHO Data, 16th October)



Data from the WHO on COVID incidence rates within Europe shows that **the 14 day incidence rate is the 11th highest out of the 31 countries (11th highest last week)**.

The 14 day incidence rates in **24 of the 31 countries have increased compared to 2 weeks ago, including Ireland (up 52%)**.

Rates have decreased in 7 countries.

Key trends & recent changes:

- In the **7 days up to 17th November** there were **30,220 new cases** reported; **up 27% on the previous week** (23,754 new cases in the 7 days up to 10th October). Compared to the previous week, the **5 day average is up 25% and compared to two weeks ago, up 43%**.
- 25.7% of new cases over the past 2 weeks were among children aged 0-18 years**. 42.8% of new cases over the past 2 weeks were among people aged 19-44 years. 22.9% of new cases were among people aged 45-64 years and 8.6% were among people aged 65 and over.

Hospital activity:

- The number of patients with confirmed COVID currently **in hospital is up 20% compared to last week** (634 at 8am on 17th November, 551 at 8am on 10th November).
- Over the past 7 days there have been **306 admissions of COVID positive patients to hospital** (an average of 44 per day), **up 9% on the previous week** (280 new admissions in the 7 days up to 10th November).
- Data from the NOCA ICU Bed Information System shows that the number of **confirmed COVID cases in ICU has increased by 34% compared to last week** (119 on 17th November, 89 on 10th November).
- **The 14 days to 17th November:** Of 57,645 new cases notified between **3rd Nov & 17th Nov, 702 (1.2%) have been hospitalised** to date and **33 (0.1%) have been admitted to ICU**. Of these 702 hospitalised cases:
 - **48 (6.7%) were aged 0-18 years**, with 3 ICU admissions in this age group
 - 742 (10.5%) were aged 19-34 years, with 4 ICU admissions in this age group
 - 268 (38.2%) were aged 35-64 years, with 23 ICU admissions in this age group
 - 323 (44.6%) were aged 65 and over, with 15 ICU admissions in this age group.

ICU Admission 27th June to 13th November - The HPSC Epidemiology of intensive care admissions in cases of COVID-19 in Ireland (15 years+)

- **476** ICU admissions of COVID-19 positive patients of which:
 - **20.4%** remain in ICU
 - **54.2%** discharged alive with median length of stay 8 days (Range 1-81 days)
 - **25.4%** died in ICU with median length of stay 11 days (Range 1-62 days)
- Of the 476 ICU admission:
 - **81.3% had one or more underlying medical conditions**; 18.7% had no underlying medical conditions
 - 37.6% were fully vaccinated, **and 60.9% were partially vaccinated or not vaccinated**. Vaccination status was unknown for 1.5% of cases

Outbreaks:

- For the most recent week (ending 13th of November), there were **29 new outbreaks in acute hospitals** reported (10 last week).
- There were **8 new outbreaks in nursing homes (3 last week)**.
- There were 3 new outbreaks in community hospitals / long-term care facilities (2 last week).
- There were 22 new outbreaks in residential institutions (20 last week).
- There were 16 new outbreaks reported in schools (34 last week, 32 of which were retrospectively notified from May/June 2021)
- There were 9 **new outbreaks associated with childcare facilities** (7 last week).
- There were **18 outbreaks in vulnerable populations** (10 last week); 13 among members of the Irish traveller community, 3 outbreaks in the Roma community, 1 in the homeless population, and 1 in persons with addictions.
- There were **6 new outbreaks in workplaces** (24 last week).
- Note data on outbreaks are provisional and subject to ongoing review, validations and updating.

Conclusion:

There are many signals of disimprovement. There is an increasing trend in the number of new cases, which meets the threshold for rapid growth. Incidence is rising, including a 7 day incidence rate greater than 50% of the 14 day rate in 20 of the 26 counties. There is a signal of increase in the number of hospital admissions of COVID positive patients, increasing numbers of COVID-19 positive patients in ICU and an increasing positivity rate. 14 days incidence rates among all age groups except the over 85s continues to increase.

The high uptake of vaccinations among all ages, and a continued reduction in incidence of COVID-19 among the 85+ cohort in the last two weeks and the continued roll-out of the booster vaccination programme remain positive signals.