

## ACTIONS

- Improve access to translation and interpretation services.
- Develop a Roma Info-line for Cork and Kerry.
- Develop specific accessible resources for Roma using appropriate technology.
- Develop Roma women's groups.
- Support the implementation of the recommendations of *Roma Daja: Roma Women's Voices: Experiences of Maternal Health Services in Cork and Kerry (2023)*.
- Develop Roma Mother and Toddler groups with transport.
- Develop culturally appropriate Mental Health services for Roma.
- Link Older Roma in with appropriate statutory and NGO supports including Public Health Nurses (PHNs) and ALONE.
- Develop mobile clinics and outreach services for health screening and vaccinations.
- Support Roma to access documentation required to satisfy HRC.
- Support Roma in securing PPS numbers.
- Explore the possibility of developing a Roma team in Cork Simon.
- Link young Roma in with existing youth services. Also link them to the services offered by STAR in Travellers Visibility Group (TVG) in Cork and TIRC's Education support project.
- Link Roma into existing employment, training and enterprise services as per recommendations in *Roma in Ireland: Access to Fair and Decent Work (Pavee Point 2022)*.
- Improve access to services in rural areas for Roma by developing linkages with community based transport.
- Conduct a longitudinal study of Roma Health in Cork and Kerry.

## PARTICIPATING ORGANISATIONS

Access Officer – Munster Technological University (MTU), Tralee

ALONE

Blackpool Community Centre, Cork

Citizens Information Centre, Tralee

Children and Young People's Services Committee (CYPSC)

Cork Simon

Cork City Learning Support Services

Community Work Departments, HSE South West

Féileacáin - Stillborn and Neonatal support

Healthy Ireland, Cork

Jigsaw, Cork

Killarney Immigrant Support Centre, (KASI)

Kerry Travellers Health and Community Development Project, (KTHCDP), Tralee

Kerry Diocesan Youth Service, (KDYS), Tralee

Men's Shed, Ballybunion

National Roma Infoline, Cairde, Dublin

National Social Inclusion Office, HSE, Dublin

North, East, West Kerry Development, (NEWKD)

Pavee Point, Traveller and Roma Centre, Dublin

Public Health Nursing Departments, Cork and Kerry

Roma Peer Researchers, Cork and Kerry

Roma Health Worker, Tipperary

Social Protection Department, Tralee

Traveller Visibility Group (TVG), Cork

TUSLA, Education Welfare Officer

Director of Midwifery, University Hospital Kerry (UHK)

University College Cork (UCC)

## RESEARCH ADVISORY GROUP

Mary Carroll, Co-ordinator, TIRC

Mary O' Sullivan, Administration, TIRC

Anita Quilligan, Kerry Travellers Health and Community Development Project (KTHCDP)

Caroline Doyle, Principal Community Worker, HSE South West

Joanne Mc Namara, Principal Community Worker, Migrant Health, HSE South West

## RESEARCH LEAD TEAM:

**Dr. Patricia Kennedy**  
Consultant

**Gina Kelly**  
Community Worker, HSE South West

**Marcela Venzel**  
Peer Researcher, TIRC

**Isac Ianko**  
Peer Researcher, TIRC

## FULL STRATEGY AVAILABLE AT [www.tirc.ie](http://www.tirc.ie)

[hse.ie/romahealthstrategy](http://hse.ie/romahealthstrategy)

## Local Roma Supports in Cork and Kerry

Tralee International Resource Centre (TIRC)  
reception@tirc.ie  
066 7127918

Gina Miyagawa, Roma Health Co-Ordinator, HSE South West  
gina.miyagawa@hse.ie

Kerry Diocesan Youth Service (KDYS)  
traleereception@kdys.ie  
066 7121674

Kerry Travellers Health and Community Development Project (KTHCDP)  
kerrytravellerscdp@gmail.com  
066 7120054

Killarney Immigrant Support Centre (KASI)  
info@kasi2000.com  
064 6620705

Traveller Visibility Group CLG (TVG), Cork  
tvgcork@gmail.com  
021 4503786

## National Roma Supports

National Roma Infoline  
9am – 5pm Monday – Friday  
danut@cairde.ie  
087 126 4606

Pavee Point Traveller and Roma Centre  
info@pavee.ie  
01 8780255

HSE National Social Inclusion Office  
socialinclusion@hse.ie

Date Published May 2024

# Te Rodel Nevo Drom We are Looking for a New Way

## A Health Strategy for Roma Families in HSE South West

*"This Strategy for Roma Health Needs was researched in our Community. It represents our Roma world and our journey today." Marcela Venzel*

*"This work which we have been a part of, shows clarity and simplicity. All of the findings and actions mentioned in this strategy are essential to our Roma Community." Isac Ianko*





## OVERVIEW

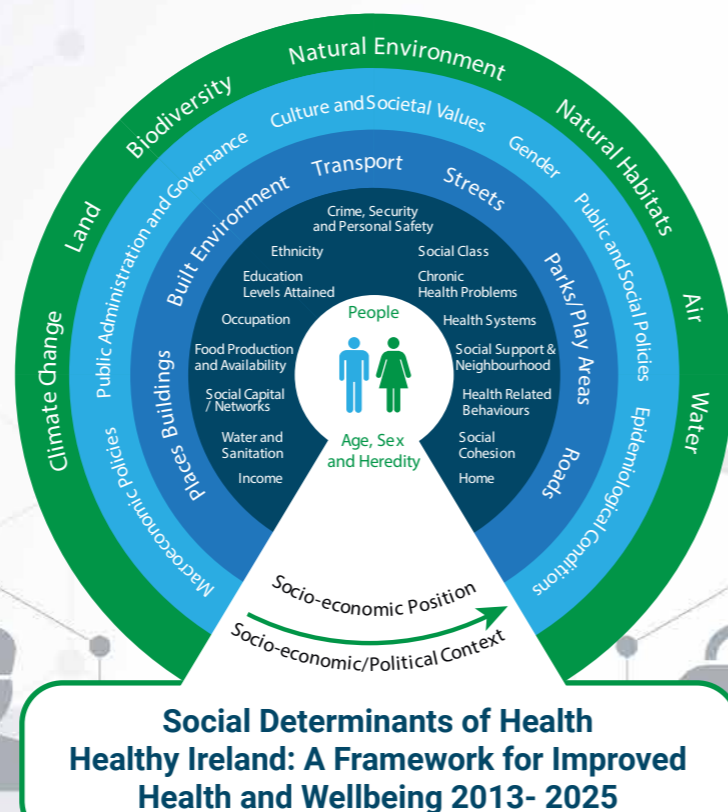
Between January and April 2023 TIRC (Tralee International Resource Centre), funded by HSE South West, completed a consultation process which involved talking with over 50 representatives from the Roma community, NGOs and statutory agencies. The objective of this work was to develop a Health Strategy for Roma in Cork and Kerry which would lead to better health outcomes.

**The main goals of the Second National Intercultural Health Strategy (2018–2023) were an important guide to this research, namely:**

- Enhance accessibility of services to service users from diverse ethnic, cultural and religious backgrounds.
- Address health issues experienced by service users from diverse ethnic, cultural and religious backgrounds.
- Ensure provision of high-quality, culturally responsive services to service users from diverse ethnic, cultural and religious backgrounds.
- Build an evidence base.
- Strengthen partnership working to enhance intercultural health.

### Additional Guiding Principles

- The World Health Organisation defines Health as “a state of complete physical, mental and social well-being and not merely the absence of disease or infirmity”. (*Constitution of the World Health Organisation, 1947*)
- Adopt a trauma informed approach across domains of policy, culture and practice.
- This Strategy incorporates an overall Lifecycle Approach from pre-natal to old age.
- The social determinants of health (SDH) are a range of factors that impact upon health and wellbeing. These include the circumstances in which people are born, grow up, live work and age. (*Healthy Ireland: A Framework for Improved Health and Wellbeing 2013- 2025*)



### Social Determinants of Health Healthy Ireland: A Framework for Improved Health and Wellbeing 2013- 2025

### The Ten Common Basic Principles for Roma Inclusion:

- Constructive, pragmatic and non-discriminatory policies.
- Explicit but not exclusive targeting.
- Inter-cultural approach.
- Aiming for the mainstream.
- Awareness of the gender dimension.
- Transfer of evidence based policies.
- Use of community instruments.
- Involvement of regional and local authorities.
- Involvement of civil society.
- Active participation of the Roma.

European Commission Directorate- General for Employment, Social Affairs and Inclusion. The 10 common basic principles on Roma inclusion: Vademecum, Publications Office, 2010. <https://data.europa.eu/doi/10.276722771>

*“The first step in understanding the needs of the population is to assess health need and the distribution of that need in a population, followed by population risk stratification with identification of particularly vulnerable population groups. This must include an understanding of the wider determinants of health.”*  
**Slaintecare Implementation Strategy 2018**

## KEY FINDINGS

- There is a need for a Multi-Agency response.
- There is a need to facilitate linkages between Roma and health and social services.
- Peer workers need to be linked to Roma support groups and the wider Roma Health Network.
- No visible specific venue in Kerry or Cork for Roma to congregate, celebrate their culture and traditions, and to develop services.
- Need to raise awareness that Roma constitute a diverse community.
- Lack of information on the health status and health outcomes for Roma.
- Roma have experienced significant levels of adversity including racism, exclusion, financial hardship, further exacerbated by experiences of historical persecution.
- Challenges in communication, language and literacy exist. Multifaceted barriers exist to regular school attendance and completion.
- Roma women face multi-faceted challenges as the main caregivers in the family.
- Heavy burden on young Roma mothers caring for young children and older parents or in-laws.
- Mental Health relating to historical and intergenerational trauma and discrimination, challenges the stress of precarious living conditions, overcrowding, insecurity of tenure, homelessness and poverty.
- Older Roma are unable to access health services due to the Habitual Residence Condition (HRC) and lack of access to interpreters.

- Difficulty in accessing PPS numbers.
- Difficulty in accessing GP services.
- Sexual and gender based violence can be difficult to disclose due to the close nature of some Roma communities.
- Need to link Roma in with lifelong learning services.
- There is a need to link Roma with Employment, Training and Enterprise services.
- There is a need to link Roma men with community based facilities to explore their potential.
- Homeless Roma need support to access appropriate services.
- Accessing services in rural areas is challenging due to the lack of availability and cost of public transport.

## ACTIONS

- Recruit two Roma workers located in NGOs in Cork and Kerry.
- Develop a Roma Hub for Cork and Kerry areas.
- Peer workers to be supported to participate regularly in Roma Health Network.
- Improve awareness raising and education for policy makers, service providers and general public. Celebrate Roma culture on International Romani Day April 8th.
- Introduce a standard ethnic identifier across all services, this is crucial to monitor health outcomes for Roma and to identify inequalities in health access experience.