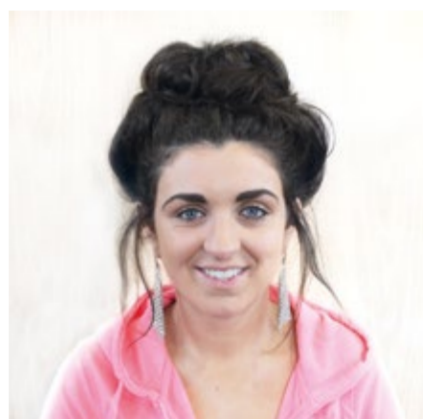




Feidhmeannacht na Seirbhíse Sláinte  
Health Service Executive

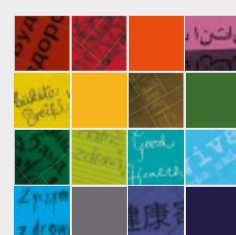


# Working together to improve our health

We want to make sure that our health services are right for everyone.  
To do this we need to know about our service users'

► Ethnic Group    ► Religion    ► Country of Birth    ► Language

Each of these factors can have an effect on a person's health. We hope you will help us to improve our health services by providing this information. A leaflet explaining why we are collecting this information is available at the nearest reception.



HSE National  
Intercultural  
Health Strategy

