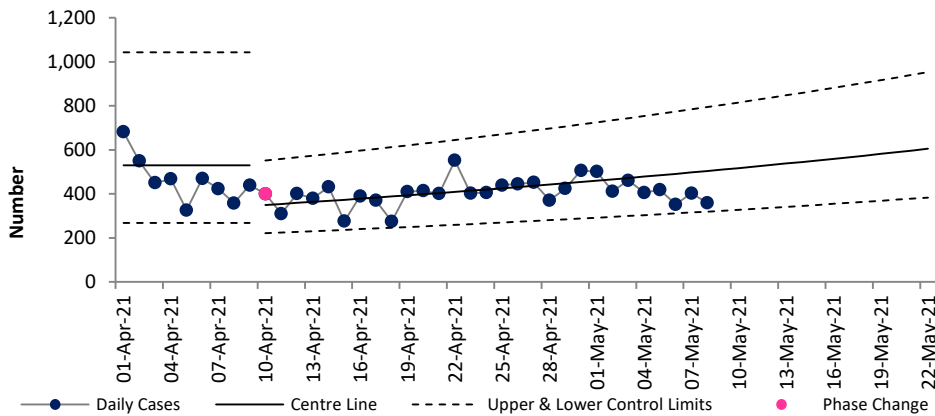


Weekly Report on COVID-19 Statistical Process Control Charts

09 May 2021

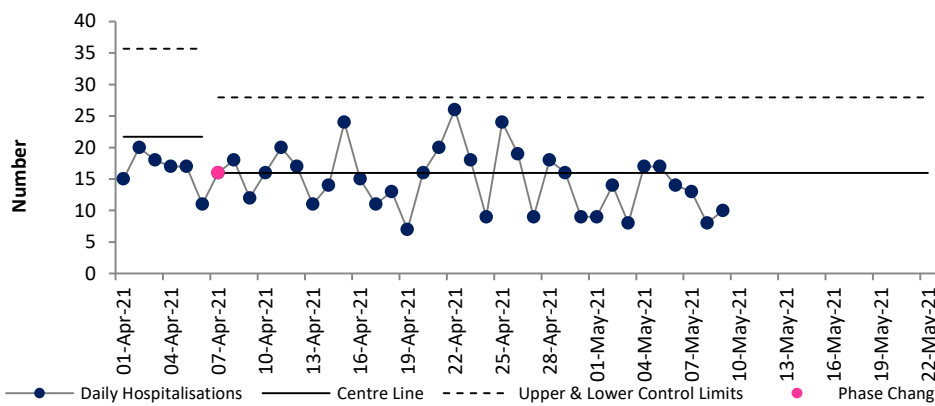
Daily COVID-19 Reported Cases



Epoch 2: Growth in daily reported cases

The latest data indicates that the number of new cases reported per day has been increasing (i.e. in the growth phase / Epoch 2) since 10th April after being in Epoch 3 (plateau or descent in daily cases) since 31st December. Since 10th April the average number of cases per day has increased from 350 to 504 per day on 8th May. If this trend continues we can expect to see an average of 605 cases per day by 22nd May.

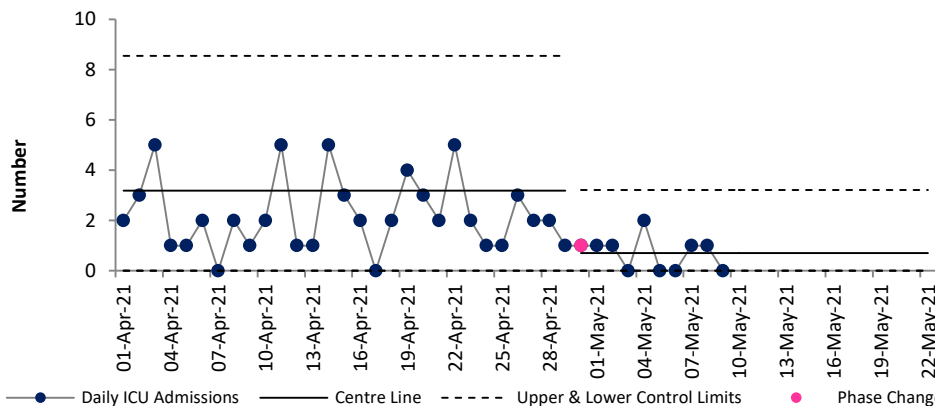
Daily new hospital admissions of COVID-19 positive patients



Epoch 3: Plateau or descent in daily reported hospital admissions

The number of new hospitalisations per day of COVID positive patients has been trending downwards since January. There was a signal of a reduction in the average number of new hospital admissions of COVID positive patients per day from 22 since 9th March to 16 since 7th April. The number is stable since then and based on the current data we can expect to continue to see an average of 16 hospital admissions per day.

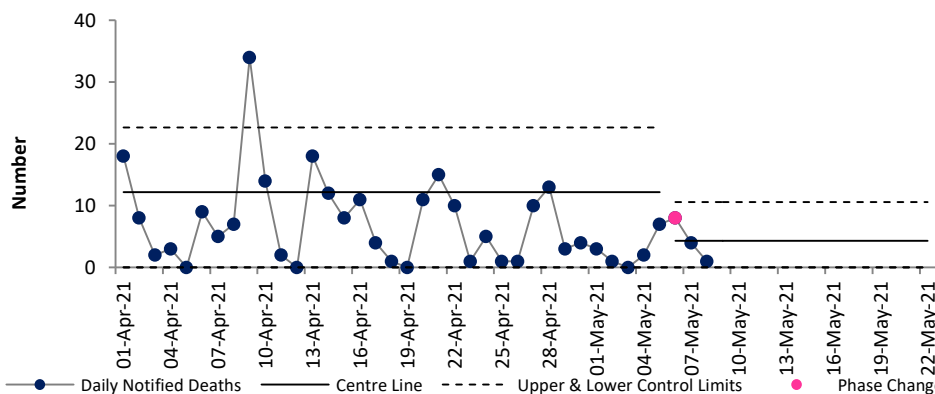
Daily admissions to ICU of COVID-19 positive patients



Epoch 4: Stability after descent in daily reported ICU admissions

The number of new ICU admissions per day of COVID positive patients has been trending downwards since January. There was a signal of a reduction in the average number of new ICU admissions of COVID positive patients per day from 3.19 since 15th March to 0.7 per day since 30th April. The number is stable since then and based on the current data we can expect to continue to see an average of 0.7 ICU admissions per day, i.e. 5 ICU admissions per week.

Daily notified deaths of people with confirmed, probable or possible COVID-19



Epoch 4: Stability after descent in daily reported deaths

The latest data shows that the number of deaths notified per day moved from Epoch 3 (plateau or descent) to Epoch 4 (stability after descent) on 6th May. Between 4th March & 5th May the average has been 12 deaths per day. Since 6th May this has reduced to 4.3 per day, and while it remains stable we can expect to continue to see an average of 4.3 deaths notified per day.

For more information on the methodology used above and the team behind the development of this SPC approach see <https://www.hse.ie/eng/about/who/qid/covid-19-qi-learning/resources-developed-to-support-the-national-covid19-response/understanding-variation-in-key-covid-19-indicators-in-ireland-using-statistical-process-control-shewhart-charts.pdf>