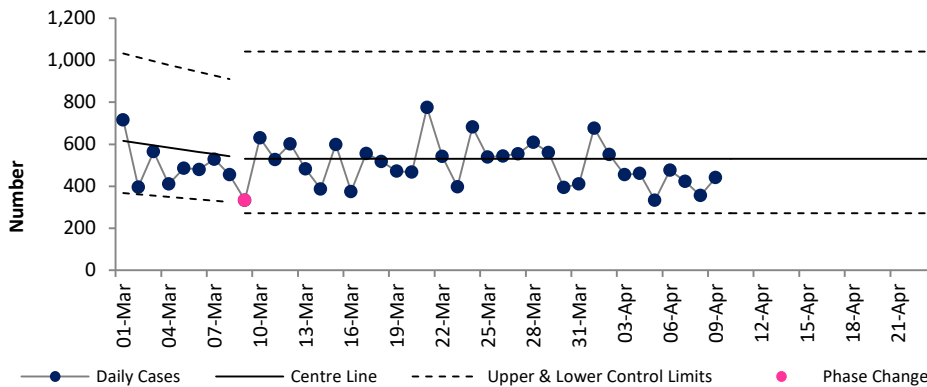


# Weekly Report on COVID-19 Statistical Process Control Charts

11 April 2021

Daily COVID-19 Reported Cases



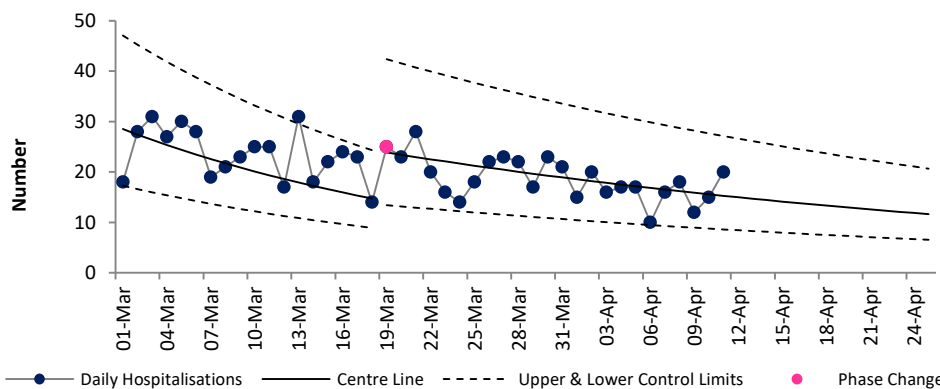
**Epoch 3: Plateau or descent in daily reported cases**

The number of cases trended downwards between 10<sup>th</sup> January & 8<sup>th</sup> March, but at a slower rate from 3<sup>rd</sup> February onwards.

Since 9<sup>th</sup> March the number of cases has stabilised, and there are no signals of change.

Based on the current data we can continue to expect to see an average of 531 new cases per day.

Daily new hospital admissions of COVID-19 positive patients

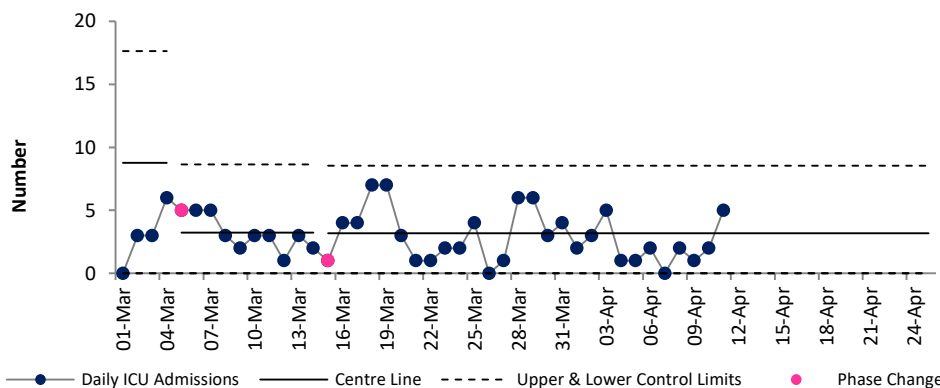


**Epoch 3: Plateau or descent in daily reported hospital admissions**

The number of new hospitalisations per day of COVID positive patients has been trending downwards since 12<sup>th</sup> January. Since 19<sup>th</sup> March the number continues to trend downwards but at a slower rate.

Based on the current data we can expect to continue to see a slowly decreasing trend over the next 2 weeks, from a current average of 15 new admissions per day to 12 admissions per day by 25<sup>th</sup> April.

Daily admissions to ICU of COVID-19 positive patients

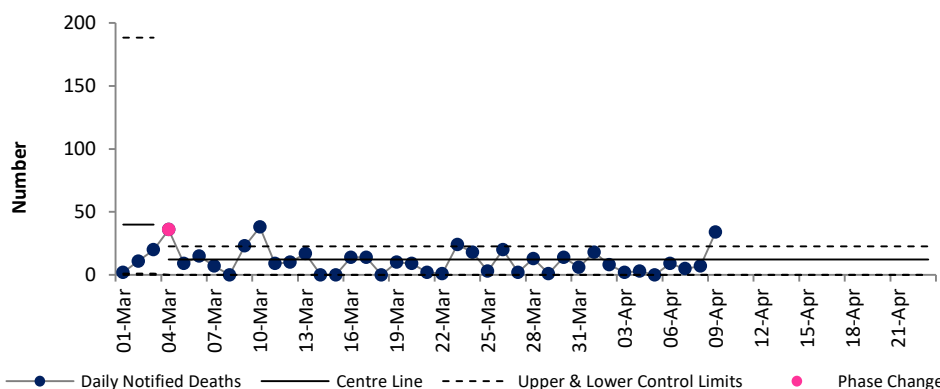


**Epoch 4: Stability after descent in daily reported ICU admissions**

There was a signal of a reduction in the average number of ICU admissions of COVID positive patients per day from 8.8 since 28<sup>th</sup> Jan to 3.24 since 5<sup>th</sup> March. There was a further slight decrease in the average to 3.19 ICU admissions per day from 15<sup>th</sup> March.

The number is stable since then and based on the current data we can expect to continue to see an average of 3.19 admissions per day.

Daily notified deaths of people with confirmed, probable or possible COVID-19



**Epoch 3: Plateau or descent in daily reported deaths**

Between 31<sup>st</sup> Jan and 3<sup>rd</sup> March there was an average of 40 deaths notified per day. There was a signal of a reduction (a series of 8 days below average), and since 4<sup>th</sup> March the average has been 12 deaths per day.

The number of deaths notified per day is now stable, and while it remains stable we can expect to continue to see an average of 12 deaths notified per day.

For more information on the methodology used above and the team behind the development of this SPC approach see <https://www.hse.ie/eng/about/who/qid/covid-19-qi-learning/resources-developed-to-support-the-national-covid19-response/understanding-variation-in-key-covid-19-indicators-in-ireland-using-statistical-process-control-shewhart-charts.pdf>