



Feidhmeannacht na Seirbhíse Sláinte  
Health Service Executive



## Smoking Prevalence Tracker 2021 Half Year Infographic

(This information relates to data collected in the months  
of March & June 2021)

Survey carried out by Ipsos MRBI on behalf of the HSE

### Headline Data

Smoking Prevalence: 16.1%

E Cigarette Use: 5.8%

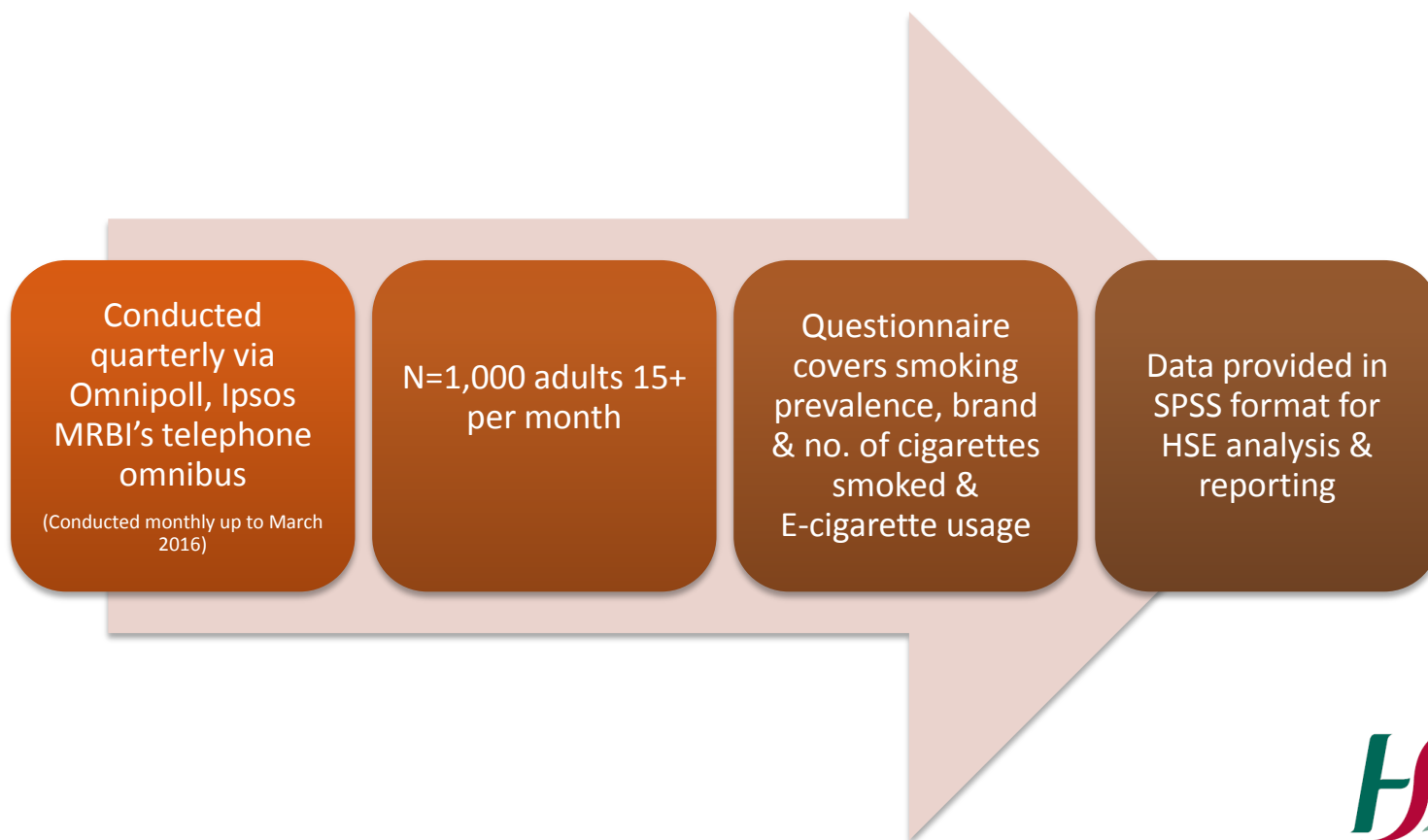
Roll Your Own (RYO): 30.2%  
(% of Smokers using RYO)



# Smoking Prevalence Tracker - Methodology

## Tracker Commenced in July 2002

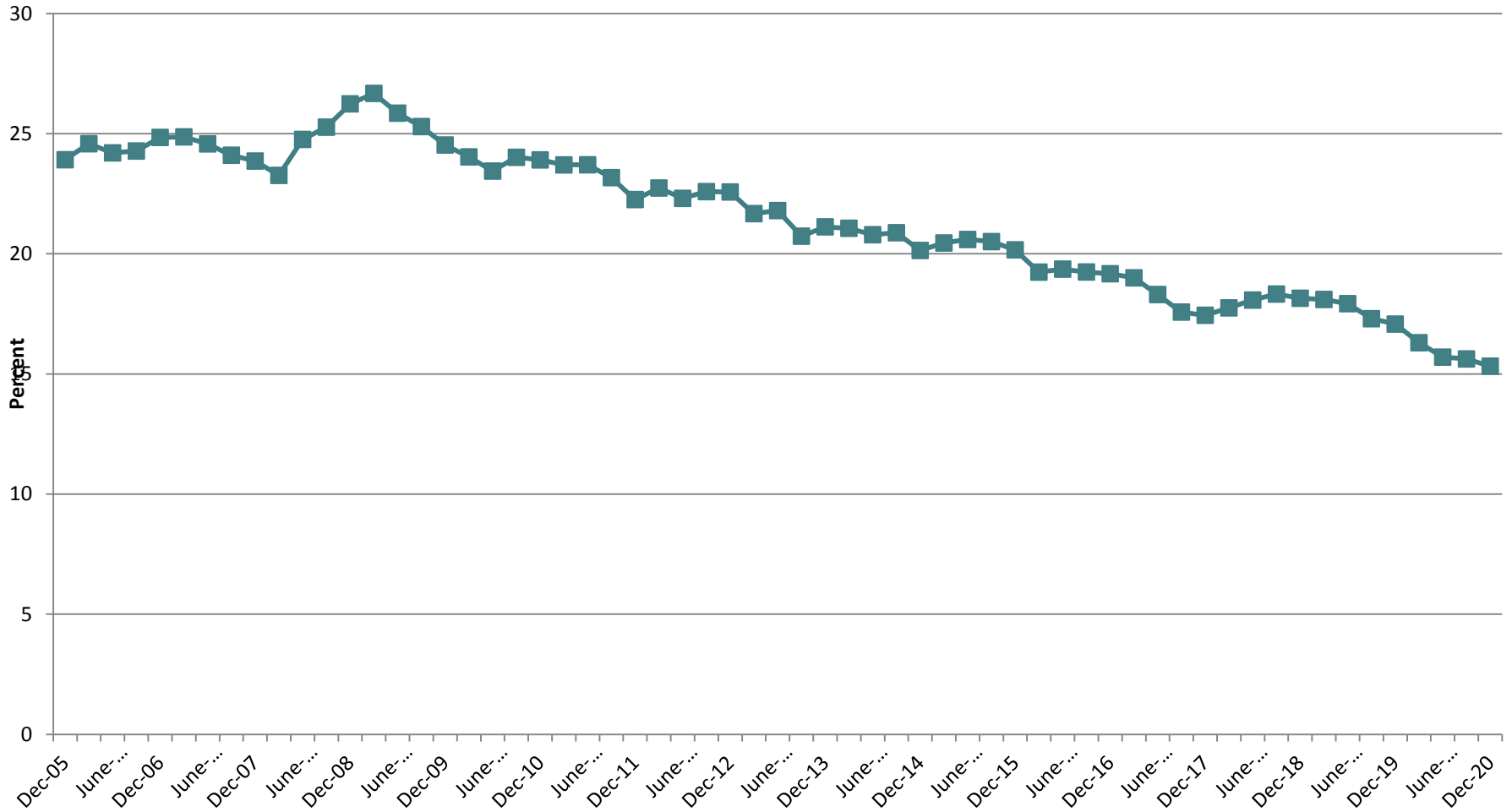
(Conducted monthly up to March 2016, now quarterly; results relate to surveys conducted in March & June, 2021)



## Differences in HSE Tracker and Healthy Ireland Smoking Prevalence Surveys

- **The tracker survey is a smaller survey: (n=4000) taken quarterly whereas Healthy Ireland (HI) samples over 7,500 people annually.**
- **The tracker is a telephone survey whereas HI is a face to face household survey.**
- **The questions on smoking prevalence are slightly different (smoke one or more weekly in tracker whereas daily or occasionally in the Healthy Ireland survey).**
- **The tracker has been undertaken since 2002 whereas the Healthy Ireland survey started in 2015.**
- **Both surveys indicate an underlying downward trend in smoking prevalence, as indicated in Figure 1 for the tracker below:**

Figure 1: Trend in smoking prevalence to 2020



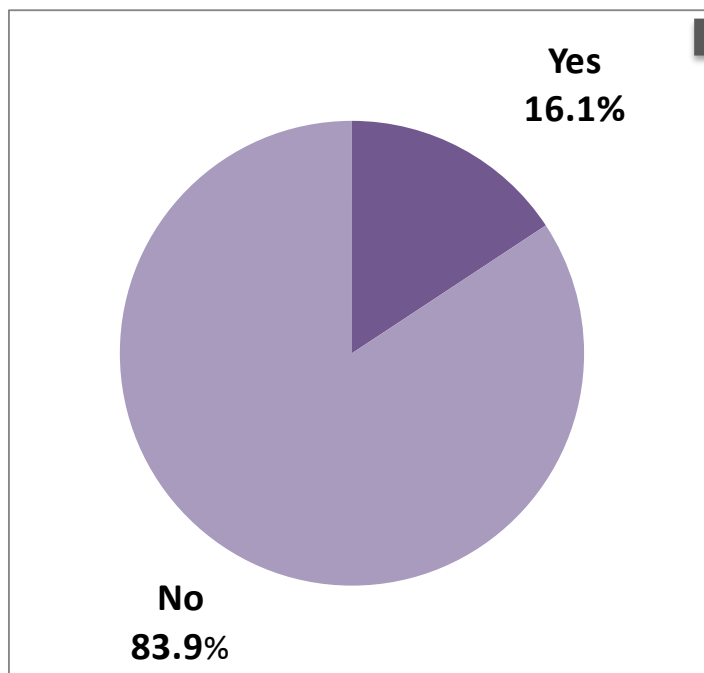
Source: HSE Tracker Survey

# Cigarette Smoking Prevalence

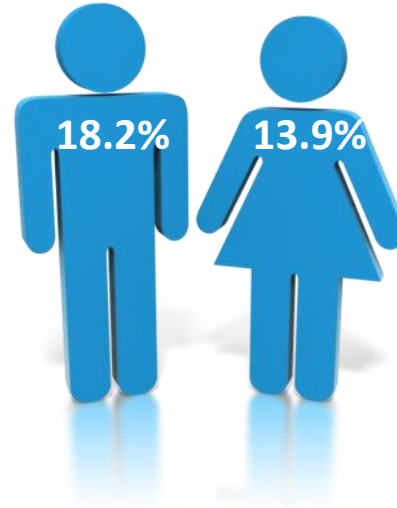
Q.1 Do you smoke one or more cigarettes each week, whether packaged or roll your own?

Smoke one or more  
cigarettes each week?

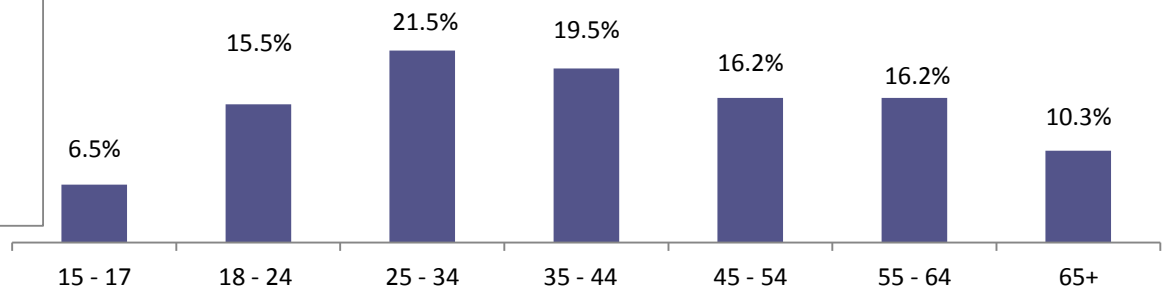
Smokers



Gender

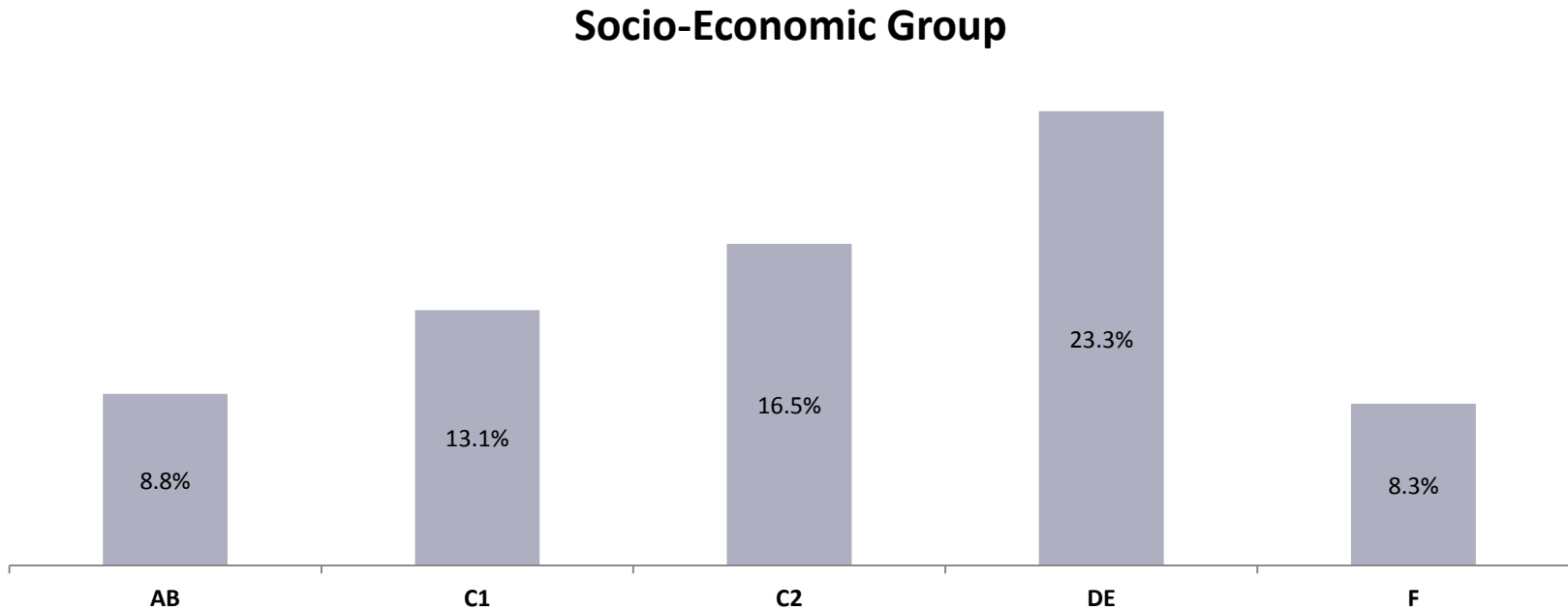


Age Group



# Cigarette Smoking Prevalence by Socio-Economic Group

Q.1 Do you smoke one or more cigarettes each week, whether packaged or roll your own?



Smoking prevalence is highest amongst those in the DE socio-economic group, with those in the AB & F categories being least likely to smoke.

Social Class Categorisation Source: AIMRO Standard Guide for Social Class  
– Further details available on HSE website