

Seasonal influenza  
and  
pneumococcal polysaccharide vaccines  
Update and current issues

Dr Brenda Corcoran  
National Immunisation Office



# Seasonal influenza vaccination programme

**EVERY YEAR FLU CAUSES SEVERE ILLNESS AND DEATH.**

IF YOU ARE:

- 65+  
Over 65
- +
- Pregnant
- A health care worker

**GET YOUR FLU VACCINE NOW.**

**IT'S A LIFESAVER**

**THE FLU VACCINE**  
[www.immunisation.ie](http://www.immunisation.ie)

For more information, talk to your GP or Pharmacist

 Feidhmeannacht na Seirbhíse Sláinte  
Health Service Executive



**I'M VACCINATING FOR TWO NOW.**

Pregnant women and their babies are at risk from flu.

Protect you and your baby -  
**get your flu vaccine.**

**IT'S A LIFESAVER**

**THE FLU VACCINE**  
[www.immunisation.ie](http://www.immunisation.ie)

For more information, talk to your GP or Pharmacist.

 Feidhmeannacht na Seirbhíse Sláinte  
Health Service Executive



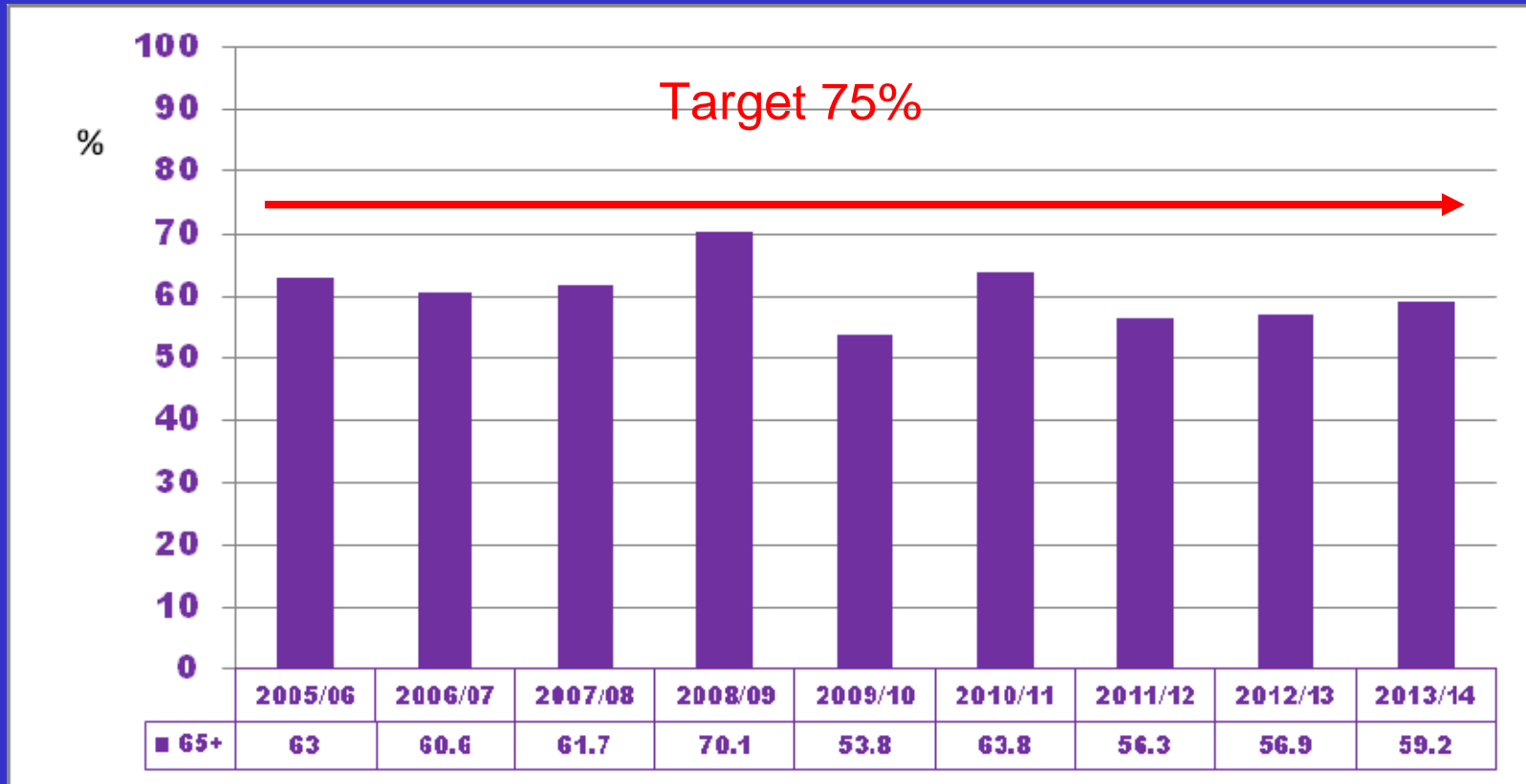
2014/2015 Annual campaign

- No change in at risk groups
- Pregnant women
- Health care workers
- Season continues until end of April

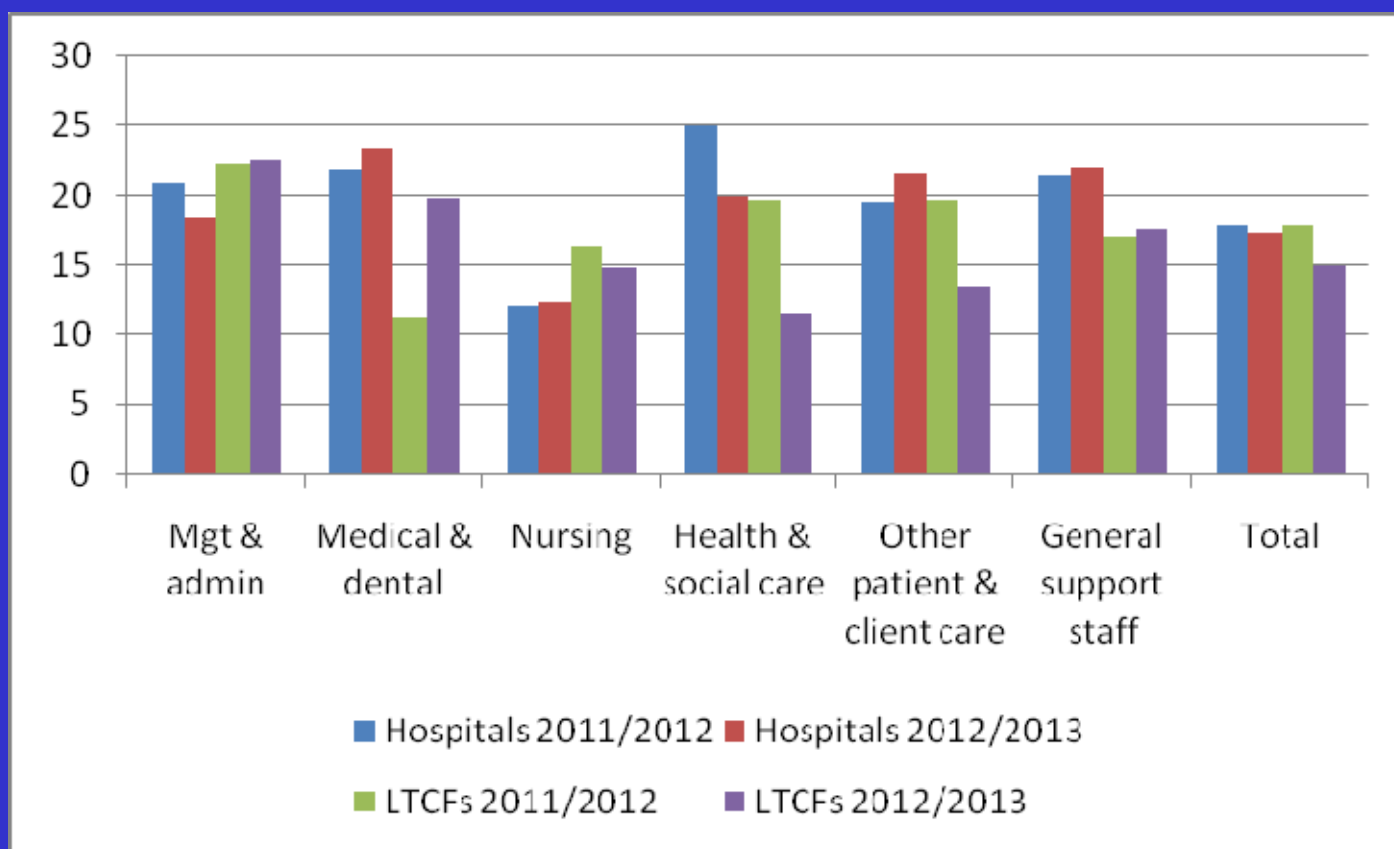


# Seasonal influenza vaccination programme

Vaccine uptake for 65+ years with GMS or doctor only card  
Source:HPSC



# Seasonal influenza vaccination programme % vaccine uptake in health care workers



<http://www.hpsc.ie/hpsc/A-Z/Respiratory/Influenza/SeasonalInfluenza/InfluenzaandHealthcareWorkers/>



# Why should health care workers be vaccinated?

“I’m very healthy so my immune system will protect me from flu.”

“I know the symptoms and would stay at home if I got sick so I wouldn’t infect my colleagues or patients.”

“I got the vaccine and it gave me the flu.”

- >20% HCWs get flu every year
- may only have mild symptoms and continue to work
- highly transmissible 1 day before & 5-7 days after symptoms
- healthy people can get seriously ill from flu
- vaccine contains killed viruses so cannot cause flu

<http://www.immunisation.ie/en/HealthcareProfessionals/Influenza>



# Pneumococcal polysaccharide vaccine (PPV23)

Recommended for

- Those aged 65 and older
- Those aged 2- <65 years in specific at risk groups
  - Asplenia or hyposplenism (splenectomy, sickle cell disease, haemoglobinopathies, coeliac syndrome)
  - Children < 5 years with a history of IPD
  - Chronic heart, respiratory , liver, renal disease or nephrotic syndrome
  - CSF leaks congenital or complicating skull fracture or neurosurgery
  - Diabetes mellitus
  - HIV infection
  - Immunosuppression due to disease or treatment
  - Individuals who have received, or are about to receive, cochlear implants
  - Post haematopoietic stem cell transplant, solid organ transplant



Reidhmeannacht na Seirbhíse Sláinte  
Health Service Executive

# Pneumococcal polysaccharide vaccine (PPV23)

## Revaccination

### Aged 65 years and older

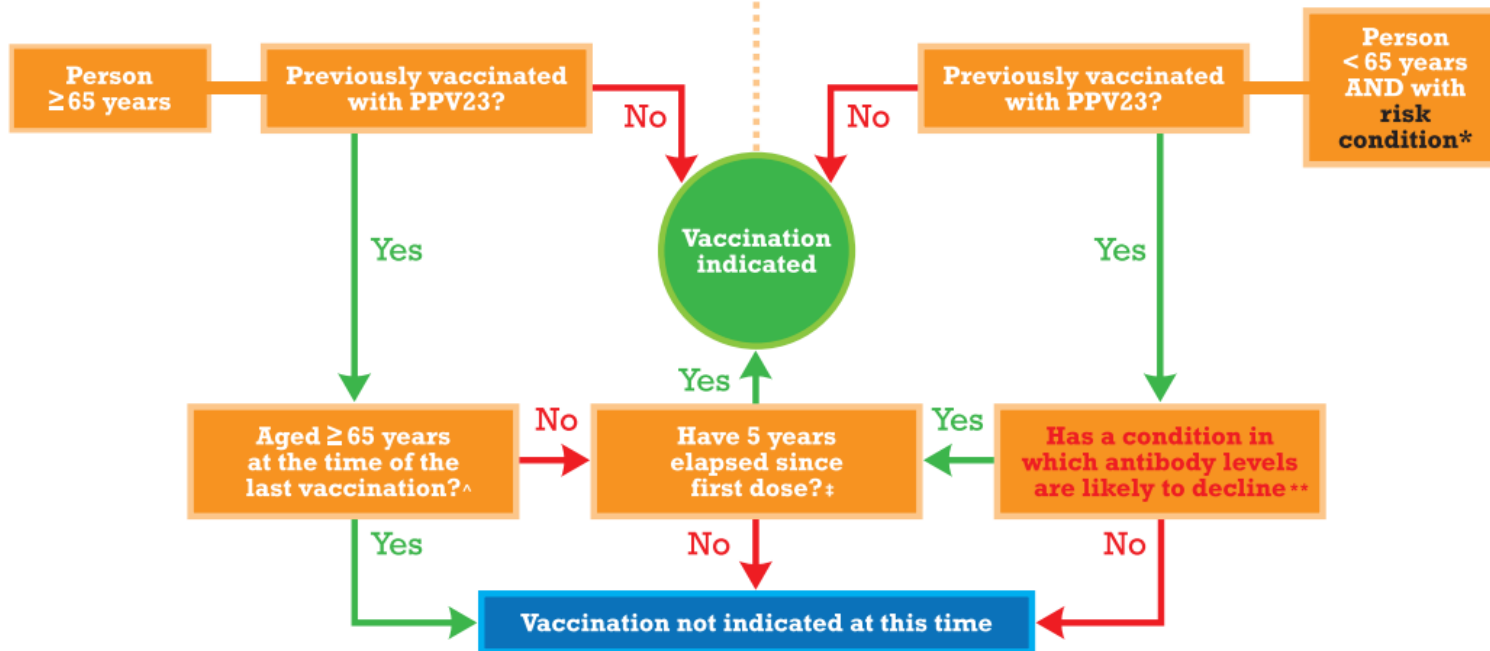
- Had one dose of PPV23
  - no further dose regardless of immune status
- Had PPV23 more than 5 years before and less than 65 years of age
  - give a once only booster vaccination 5 years later

### Less than 65 years of age

- if antibody levels are likely to decline rapidly
  - asplenia & hyposplenism
  - immunosuppression
  - chronic renal disease or renal transplant
- booster vaccination 5 years after the first vaccination
- one further PPV booster at or after 65 years of age - 5 years after 2<sup>nd</sup> dose.



## Pneumococcal Polysaccharide Vaccine (PPV23) Algorithm for Vaccination



\* Asplenia or splenic dysfunction (splenectomy, sickle cell disease, coeliac syndrome); chronic renal, heart, lung, liver disease, diabetes mellitus, complement deficiency, immunosuppressive conditions; CSF leak, cochlear implant recipients or candidates for implants; children < 5 years with history of invasive disease.

^ Revaccination not indicated for any person who has received a dose of PPV23 at age ≥65 years.

‡ If vaccination has been given during chemotherapy or radiotherapy revaccination 3 months after treatment is indicated.

\*\* Those with no spleen, with splenic dysfunction, immunosuppression including HIV infection, nephrotic syndrome, renal transplant or chronic renal disease.