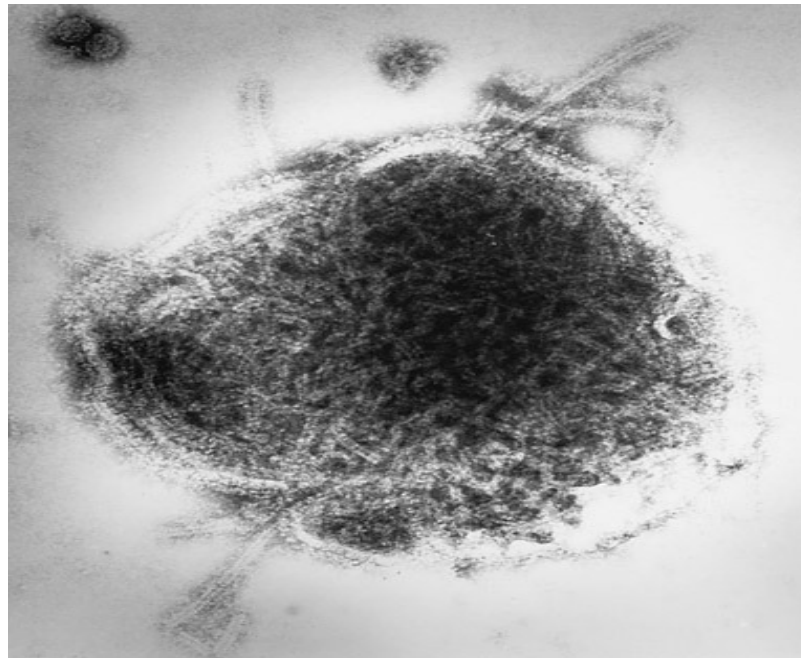


Epidemiology of the 2011 Dublin Measles outbreak

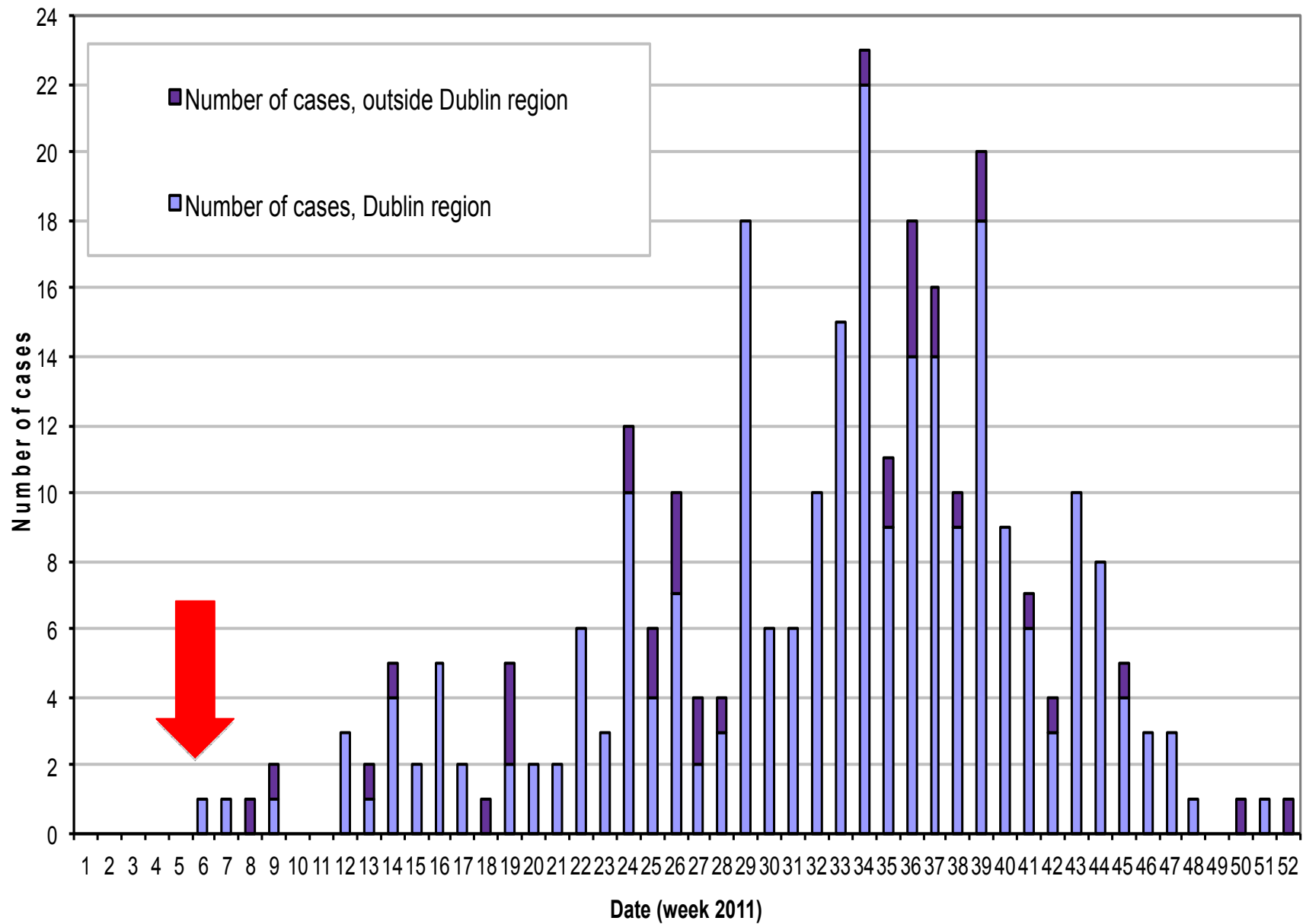


**Dr Mary Ward, FFPHMI, MRCGP, MICGP
on behalf of the outbreak control team**

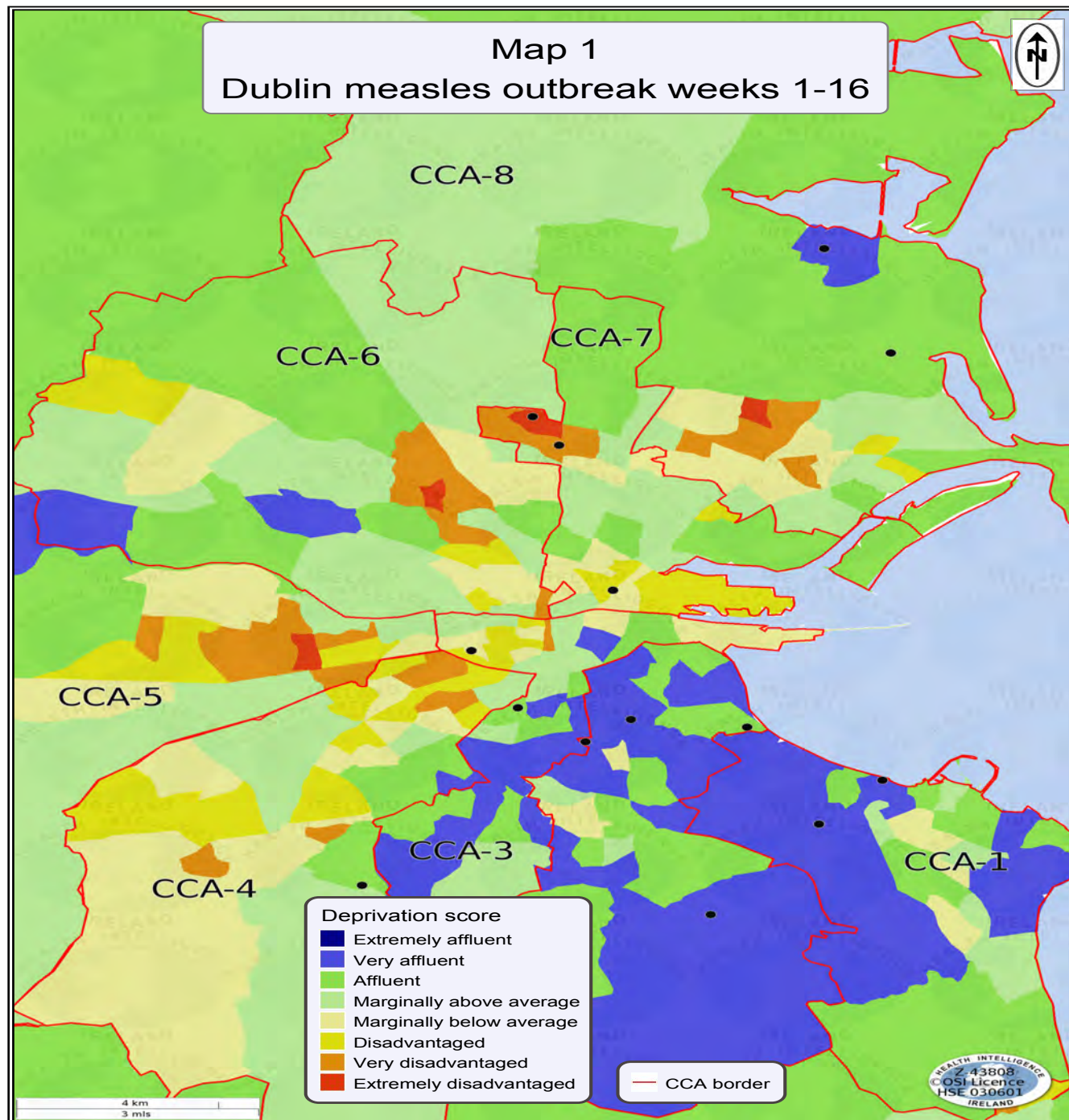
Measles



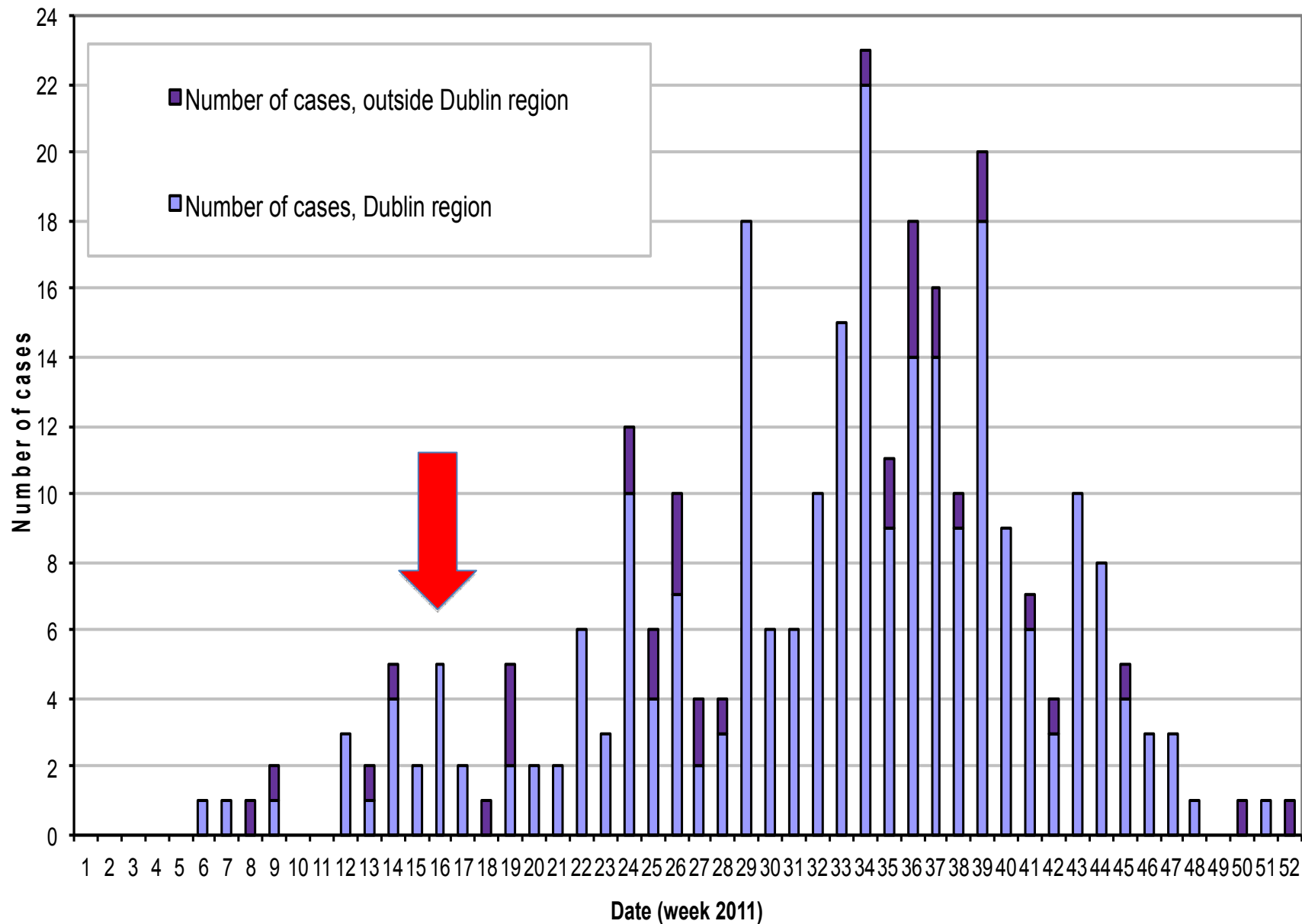
Measles cases nationally, and in the Dublin region, for week 1 - 52, 2011 (n=285)



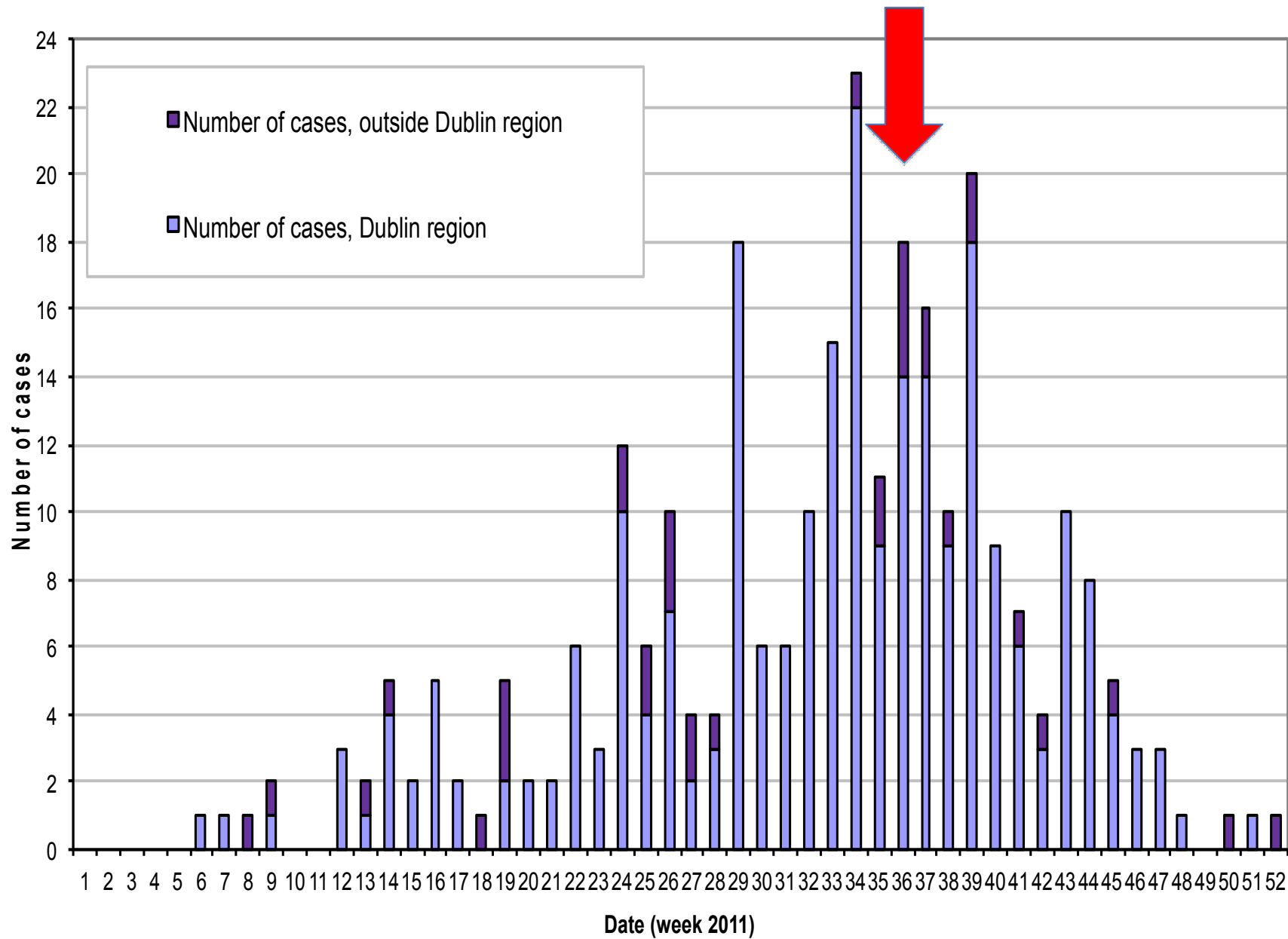
Map 1
Dublin measles outbreak weeks 1-16

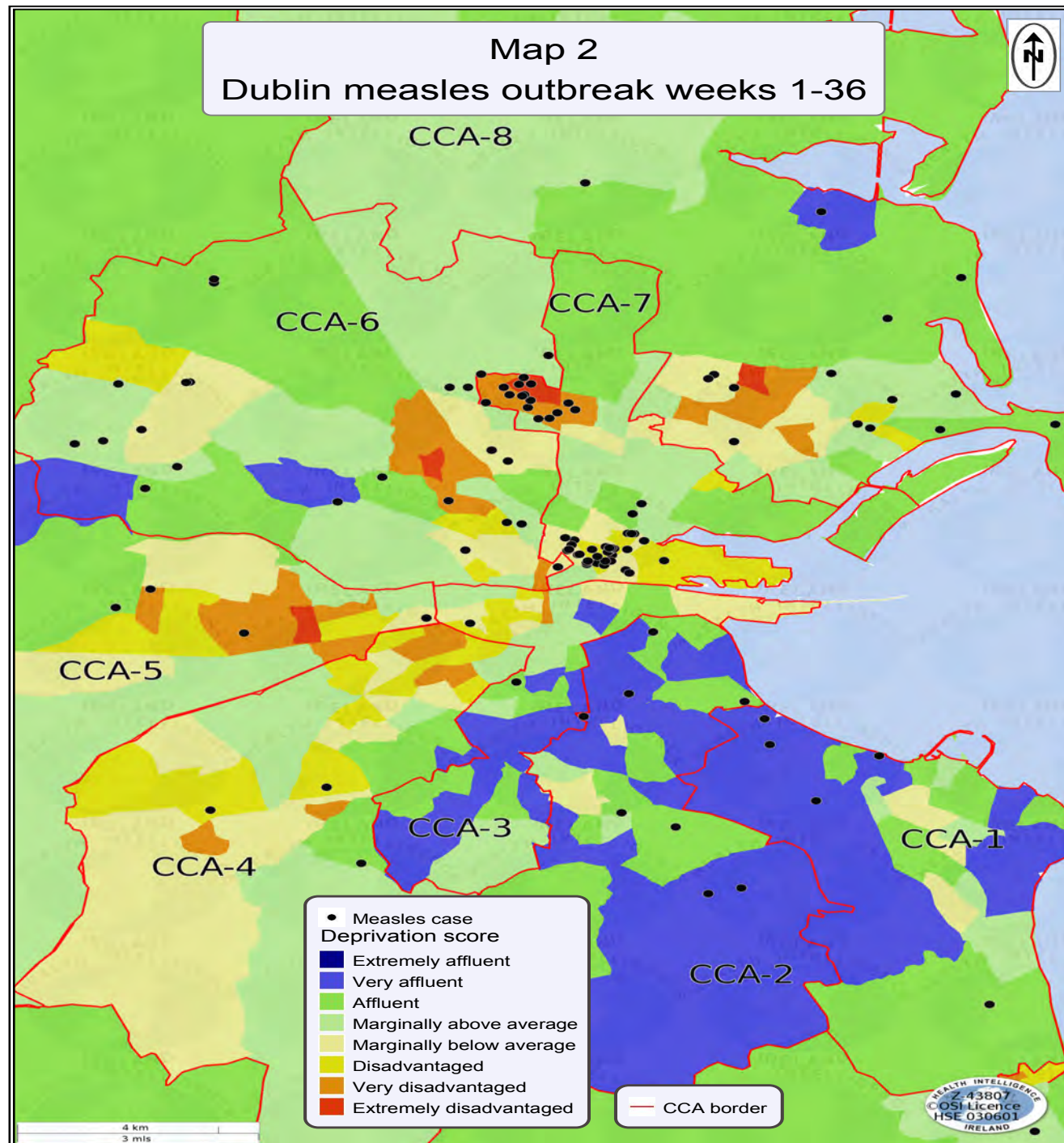


Measles cases nationally, and in the Dublin region, for week 1 - 52, 2011 (n=285)



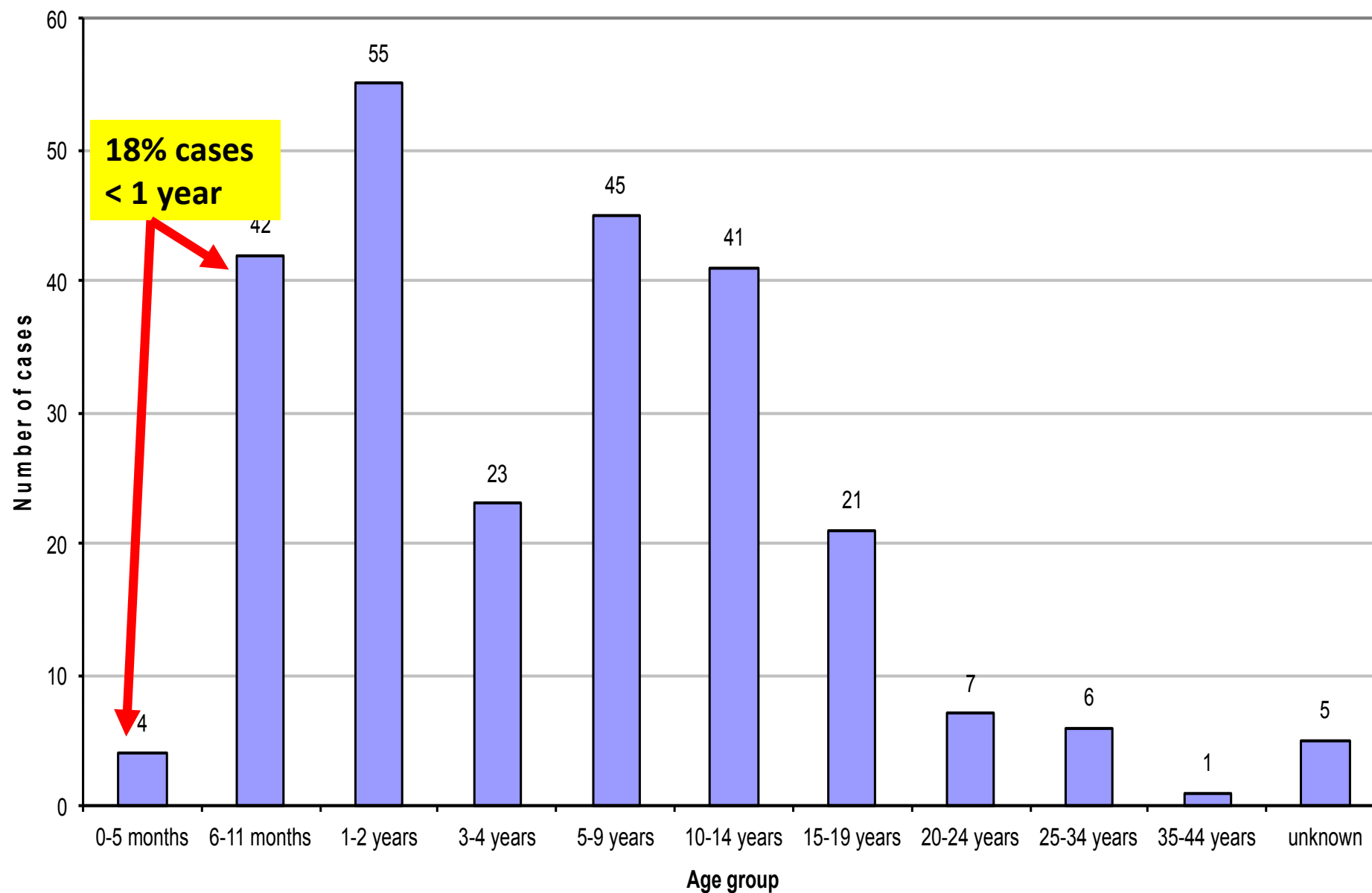
Measles cases nationally, and in the Dublin region, for week 1 - 52, 2011 (n=285)







Measles cases by age group, Dublin region, week 1 to 52, 2011 (n=250)



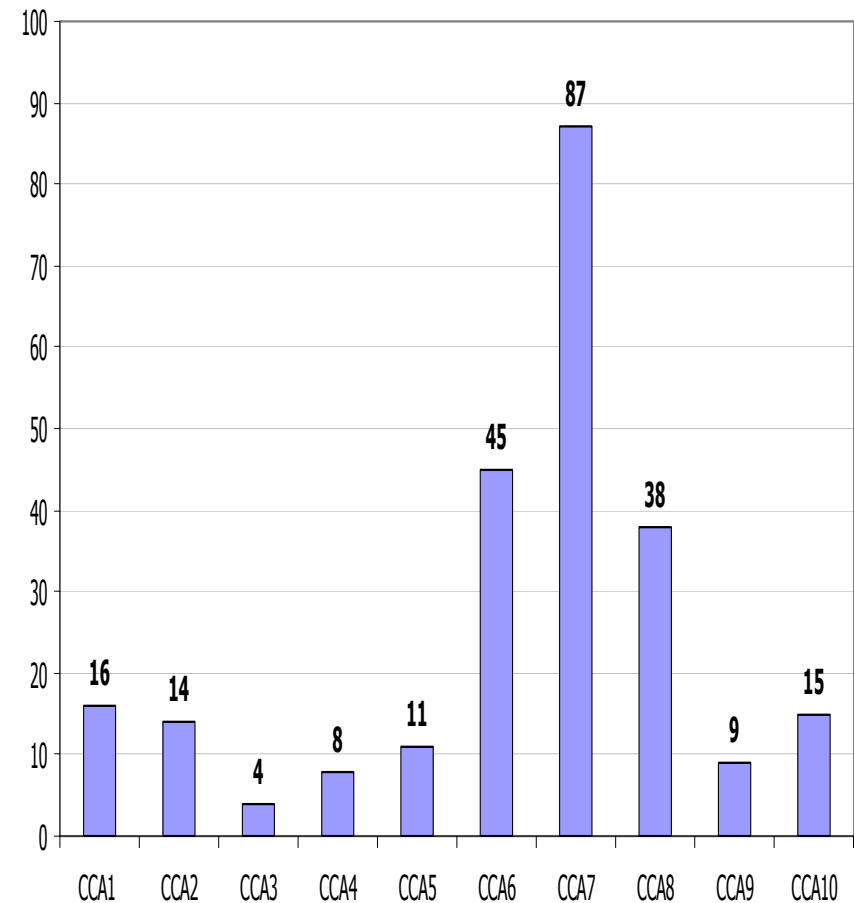
Epidemiology

- 54% male
- 51% laboratory confirmed
- 23% probable cases
- 26% possible cases
- 24 (10%) cases hospitalised

NO MMR	ONE DOSE OF MMR	TWO DOSES OF MMR	NOT KNOWN
145 (58%)	57 (23%)	10 (4%)	38 (15%)

Clustering in the north inner city

- National CIR 5.9/100,000
- Dublin CIR 15/100,000
- CCA7 CIR 63.9/100,000
- CCA 7 3,632/KM
- Reduced MMR2 uptake



Control Measures

- **Outbreak control team**
 - Medical, nursing, admin from PH,CH, HPSC & NIO.
 - General guidance to hospitals, GP
 - MMR at 1 year and 4-5 years
 - Opportunistic vaccination if not two MMR by 5 years
- **North inner city intervention**
 - Vaccinating 6-11 month old
 - Expedited second MMR (>1 year)
- **Vaccination teams**
 - Vaccination teams – 1772 administered



Control Measures

- **Contact tracing**
 - Prioritised within DPH, advised on appropriate immunisation, arranging swabs, liaising with schools, childcare facilities and parents.
- **Media campaign**
 - Radio and print media.
- **Healthcare staff**
 - Isolation of cases as they presented.
 - Appropriate immunisation for health care staff.

Acknowledgements

- Participating schools: teaching and management and administrative staff
- Nursing, medical and administrative staff in CCA6, 7 & 8
- The National Immunisation Office
- The HPSC
- Health Information Unit, Health Atlas Ireland
- Additional PMO and SMO support from CCA4 and CCA9



Thank You