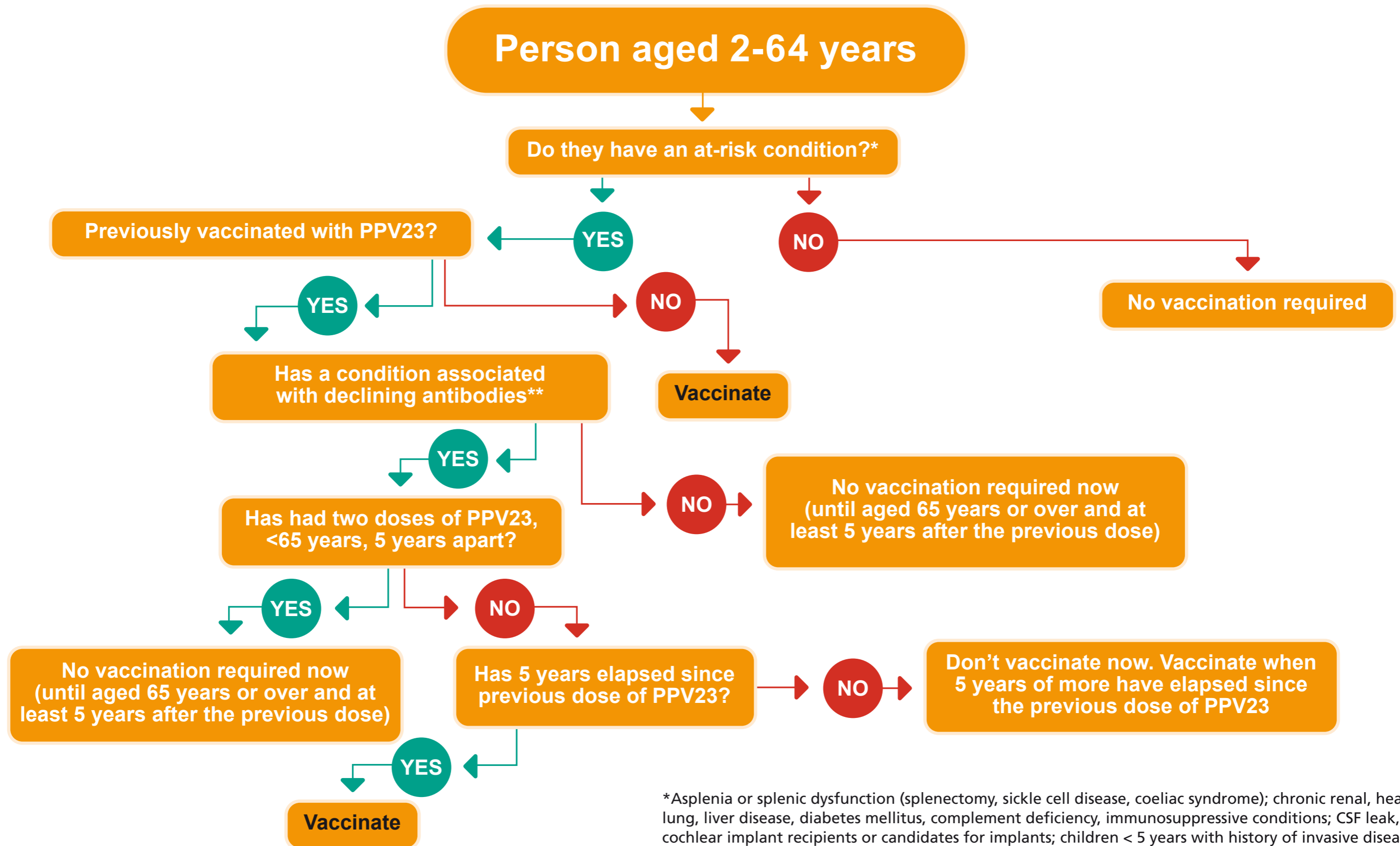




Pneumococcal Polysaccharide Vaccine (PPV23): Decision tool for vaccination for those aged 2-64 years



*Asplenia or splenic dysfunction (splenectomy, sickle cell disease, coeliac syndrome); chronic renal, heart, lung, liver disease, diabetes mellitus, complement deficiency, immunosuppressive conditions; CSF leak, cochlear implant recipients or candidates for implants; children < 5 years with history of invasive disease.
**those with no spleen, with splenic dysfunction, immunosuppression including HIV infection, nephrotic syndrome, renal transplant or chronic renal disease.