

Compliance Information Events HSE Section 39 Grants (<250K) and National Lottery Grants 2020



For your comfort....



Today's schedule...

Introduction, Structure & Finance	Roscommon - Liam Fogarty/Denise Donlon Mayo - Liam Fogarty/Denise Donlon Galway - Gerry Burke/Denise Donlon	10.00	10.15
Older Persons' Services	Roscommon - Miriam McGuinness Mayo - Miriam McGuinness Galway - Miriam McGuinness	10.15	10.25
Health and Wellbeing	Sean Gordon	10.25	10.35
Primary Care	Padraic Carolan	10.35	10.45
Mental Health	Aidan Sweeney	10.45	10.55
<i>break/network opportunity</i>	<i>all</i>	<i>10.55</i>	<i>11.15</i>
Disability Services	Roscommon - Suzanne Keenan Mayo - Laura Rochford Galway - Mary Owens	11.15	11.25
Application & Adjudication process	Denise Donlon	11.25	11.40
The Wheel	Roscommon - Caroline Wilson Mayo - Caroline Wilson Galway - Donncha Foley	11.40	11.50
Q&A	open floor	11.50	12.00

Purpose of Today?

1. To provide clarification on Community Healthcare West compliance requirements regarding annual application for Section 39 funding.
2. To provide an overview of budget allocations, availability and limitations for Section 39 funding in Community Healthcare West.
3. To outline 2020 application timelines and process for Section 39 funding.
4. To promote awareness of Community Healthcare West.
5. To promote communication between applicants, service providers and relevant Community Healthcare West Service Leads.
6. To encourage and receive feedback from those present.
7. Explore other funding streaming opportunities.

The day will not cover:

Specific discussions regarding applications made.



Cúram Sláinte
Phobail, Iarthar
ag freastal ar Ghallimh,
Maigheo agus Ros Comáin

Community
Healthcare West
serving Galway, Mayo
and Roscommon



Who are we?

Community Healthcare West

(Galway, Mayo and Roscommon)



Mission



Goals



Values

- Responsible for the delivery of all Health and Social care services outside of the acute sector i.e. the Hospital sector.
- Deliver services *to* people: Population of 467,326 @ 2016
- Deliver services *through* people:

Discipline	Medical/ Dental	Nursing	Health & Social Care Professionals	Management/ Admin	General Support	Patient & Client Care	WTE as at Dec 2018
Mental Health	106	586	146	141	69	290	1338
Primary Care	94	322	322	329	35	73	1175
Older People Services	12	375	36	92	81	1046	1642
Disability Services	2	55	37	26	8	86	214
Section 38	4	197	269	80	49	608	1207
Social Care	18	627	342	198	138	1740	3063
Grand Total	218	1535	810	668	242	2103	5576

Community Healthcare West

Interim Chief Officer
Community Healthcare West
Martin Greaney

Head of Service

**Health and
Wellbeing**

Martin
Greaney

Head of Service

**Primary
Care**

Frank
Murphy

Head of Service

**Mental
Health**

Charlie
Meehan

Head of Service

**Social
Care**

Elaine
Prendergast

Head of Service

Finance

Liam
Fogarty

Head of Service

**Quality &
Safety**

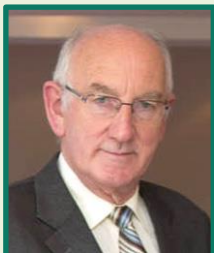
Shannon
Glynn

Head of Service

**Human
Resources**

Siobhan
Moran

Community Healthcare West Management Team



Martin Greaney

Interim Chief Officer

Tel: 091 775404

Email: cho.west@hse.ie

Elaine Prendergast

Head of Social Care

Tel: 091 775923

Email: social.carecho2@hse.ie



Frank Murphy

Head of Primary Care

Tel: 094 90 49072

Email: frank.murphy@hse.ie

Liam Fogarty

Head of Finance

Tel: 091 775970

Email: liam.fogarty@hse.ie



Charlie Meehan

Head of Mental Health

Tel: 091 775792

Email: mentalhealth.cho2@hse.ie

Siobhan Moran

Head of Human Resources

Tel: 094 90 49080

Email: CHO.westHR@hse.ie



Martin Greaney

Head of Health & Wellbeing

Tel: 094 90 42143

Email: martin.greaney@hse.ie

Shannon Glynn

Quality & Risk Manager

Tel: 091 775751

Email: shannon.glynn@hse.ie





National Service Plan **2019**

Seirbhís Sláinte
Níos Fearr
á Forbairt

Building a
Better Health
Service

Community Healthcare West

Delivery Plan 2019

Building a
Better Health
Service

Seirbhís Sláinte
Níos Fearr
á Forbairt



Poistheasaíocht na Seirbhíse Sláinte
Health Service Executive



Cúram Sláinte
Phobail, Iarthar
ag freastal ar Ghallimh,
Maigheo agus Ros Comáin

Community
Healthcare West
serving Galway, Mayo
and Roscommon

Finance and budgets



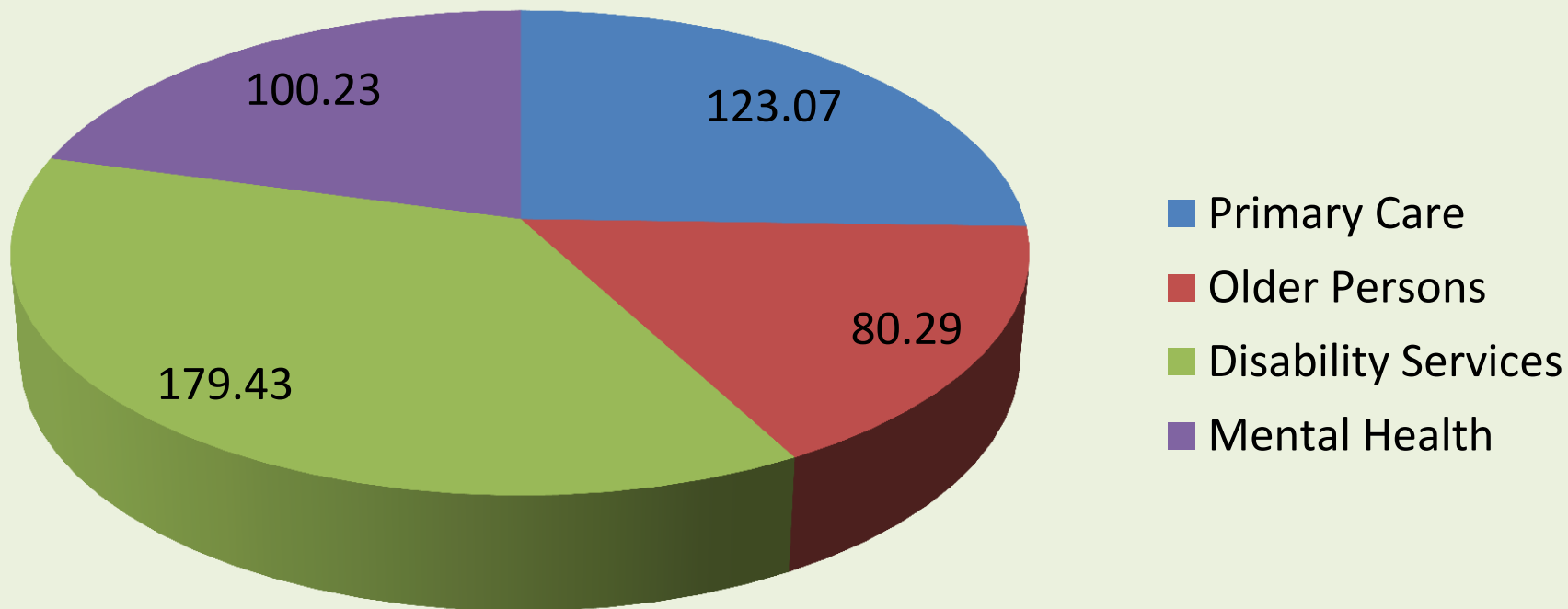
Governance

Health Service Executive National Financial Regulations

31.1. Introduction

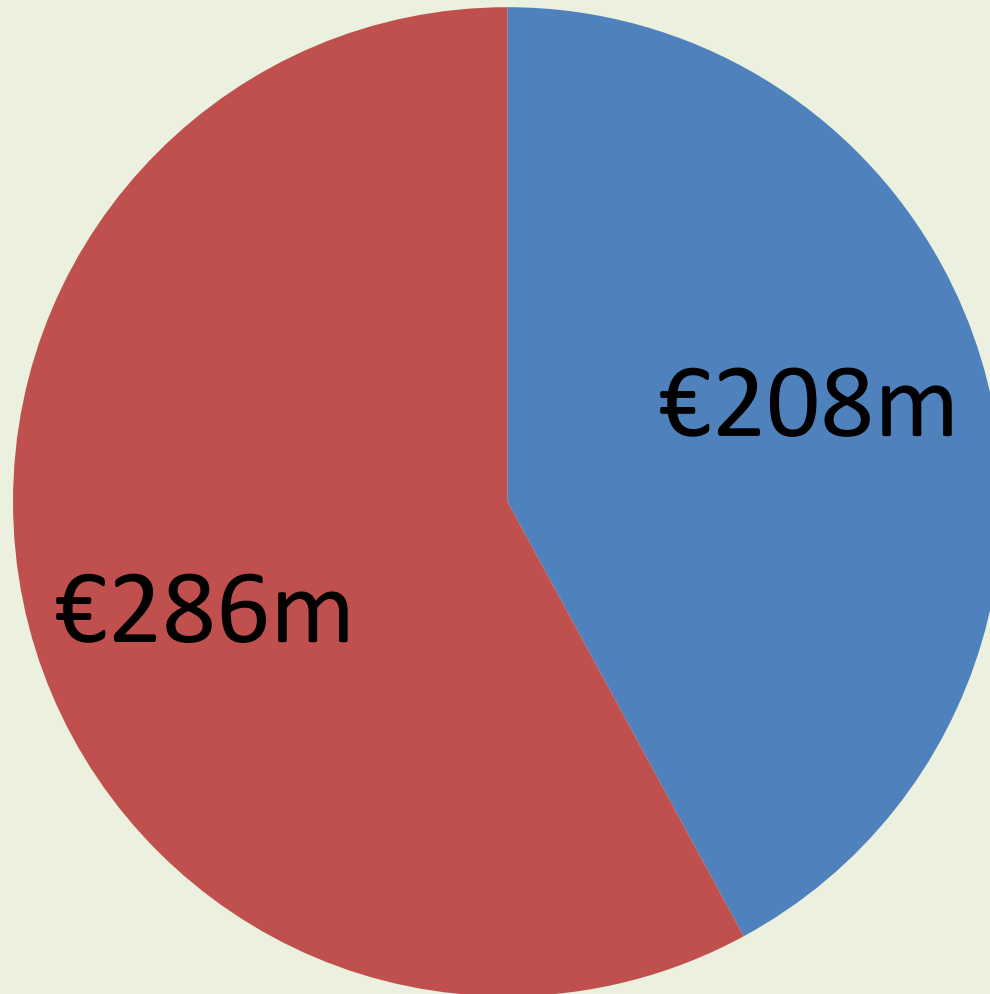
31.1.1. The Health Service Executive (HSE) has responsibility for the stewardship and proper management of public funds granted to it for the provision of health and personal social services. This regulation forms part of the National Financial Regulations of the Health Service Executive (HSE). The National Financial Regulations are part of the overall system of Corporate Governance and Internal Control within the organisation.

Operational Budget 2019



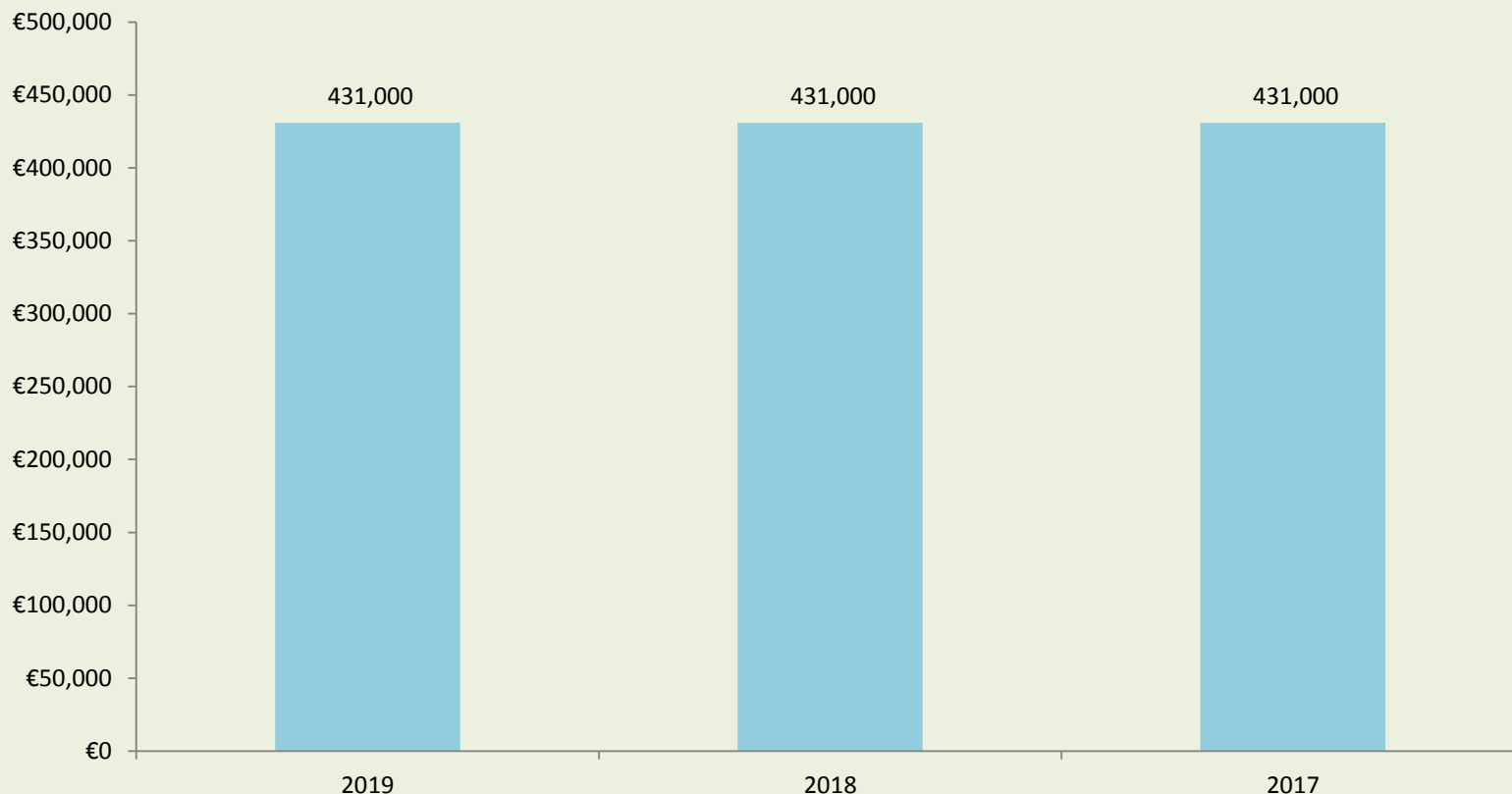
Total Budget €483.02m

Total Budget 2019 - €494m

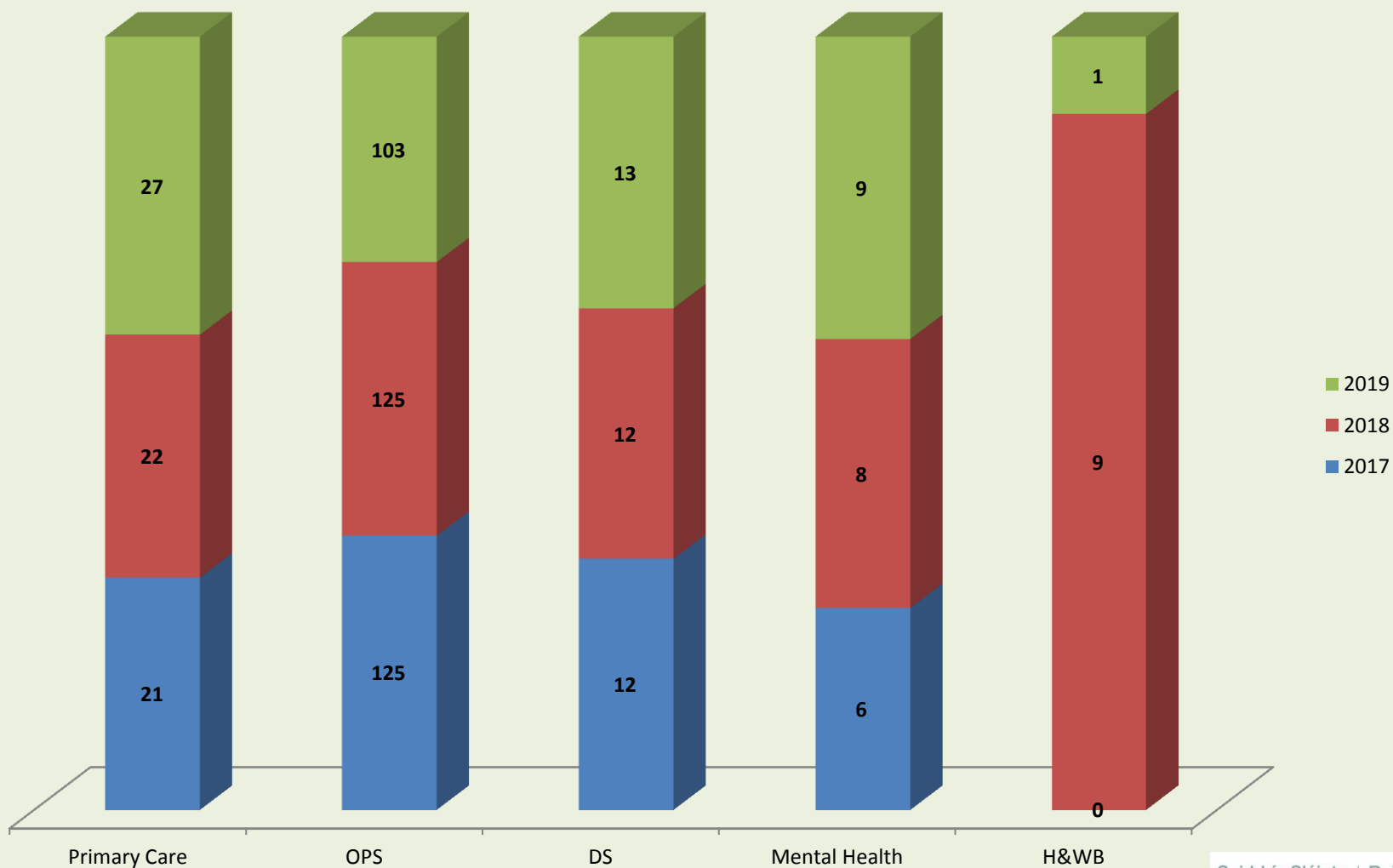


**>40% of the total budget annually goes to Service Providers via
Section 38 & 39 Grants**

National Lottery Allocations



Number of Agencies Grant Aided (by Care Group) 2017 - 2019





Grant Aid Allocations

	Section 39	€	National Lottery Grants	€431,000
2017	100	3,388,198	104	€431,000
2018	176	4,688,130	159	€431,000
2019	158	4,232,204	154	€431,000



Cúram Sláinte
Phobail, Iarthar
ag freastal ar Ghailimh,
Maigheo agus Ros Comáin

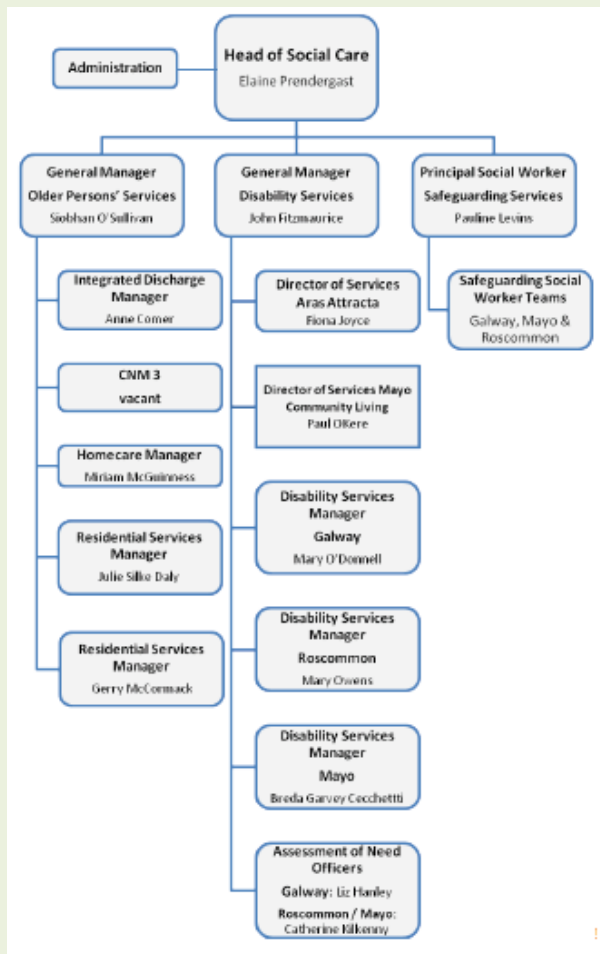
Community
Healthcare West
serving Galway, Mayo
and Roscommon

A map of Ireland with its administrative regions divided into Health Care Organizations (CHOs). The map is light gray with black outlines for the regions. Labels for CHO 1, CHO 4, and CHO 6 are visible. The text 'Community Healthcare West' is faintly visible over the central part of the map.

Community Healthcare West Divisions

Social Care

The Social Care Division
provide services to
People with Disabilities,
Older Persons and
includes the Safeguarding
of Vulnerable Persons
Social Work Team.



Older Persons' Services

(Siobhan O'Sullivan – CHO Lead)

Aim:

- To continue to support older people to live in their own homes and communities for as long as possible.
- We also aim to maximise the potential of older people, their families and local communities and to maintain people in their own homes and communities, within available resources while delivering high quality residential care when required.

We will work toward our aim by:

Implementation of the following strategies:

- National Positive Aging Strategy
- The Irish National Dementia Strategy
- National Carers Strategy
- Task Force for Loneliness

Services are provided both directly and via partnership with voluntary providers in support areas such as:

- Day Support services
- Meals on Wheels
- Home Help e.g delivery of 1.8 million hours of Home Support to an average of over 6000 people, at any one time
- Support for Carers – introduction of Carers Needs Assessment Tool.
- In-house respite/Carers breaks
- Supporting people with dementia and their carers.

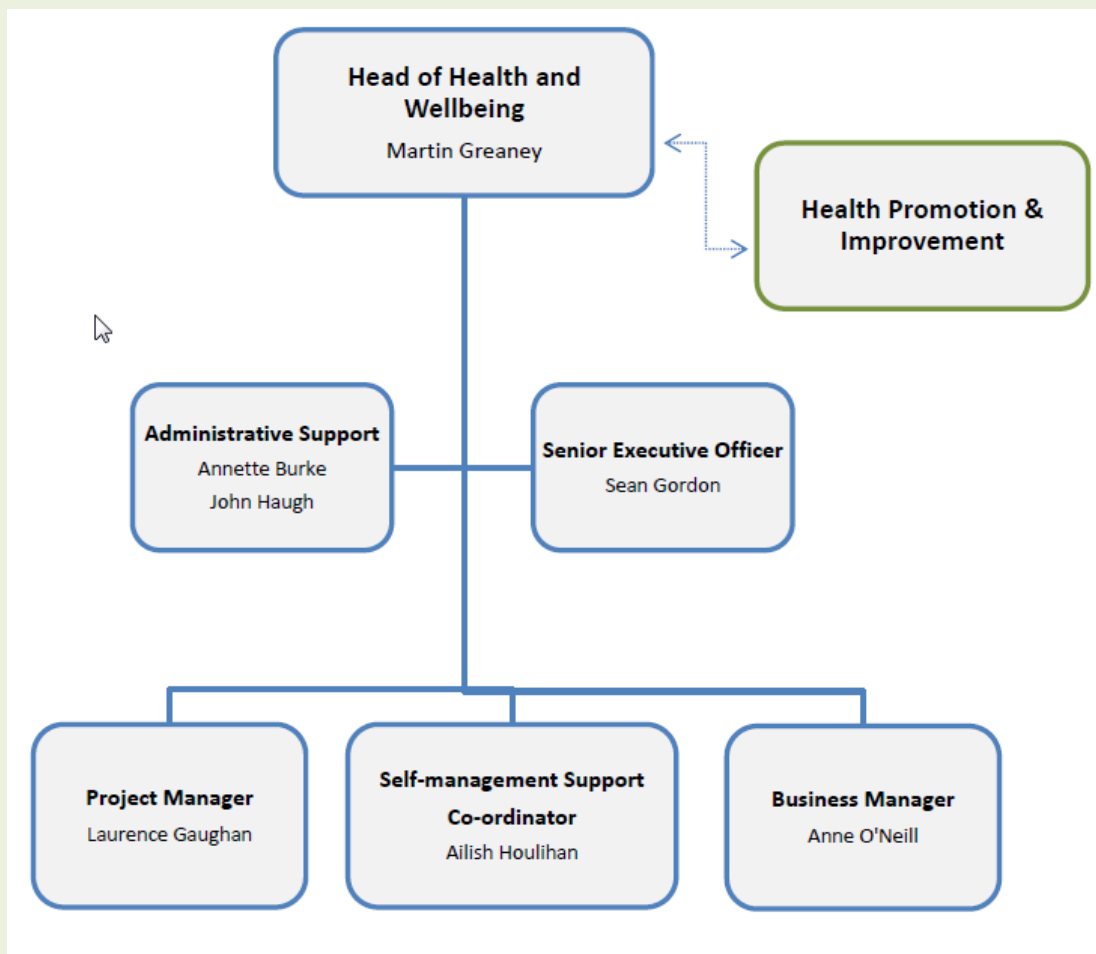
What we fund....

In assessing the merits of a funding application Older Persons' Services, in addition to general criteria established, will also assess and seek for those applications that provide and/or promote:

- a) DAY SUPPORT
- b) MEALS ON WHEELS
- c) TRANSPORT
- d) OTHER:
 - Links with PHN/GP/Therapies etc.
 - Assistance with Showering/Bathing
 - Assistance with Laundry
 - Assistance with Fuel management
 - Assistance with physical activities
 - Provision of Classes/further education
 - Social supports

Health and Wellbeing

(Sean Gordon – CHO Lead)



Healthy Ireland Framework 2013– 2025

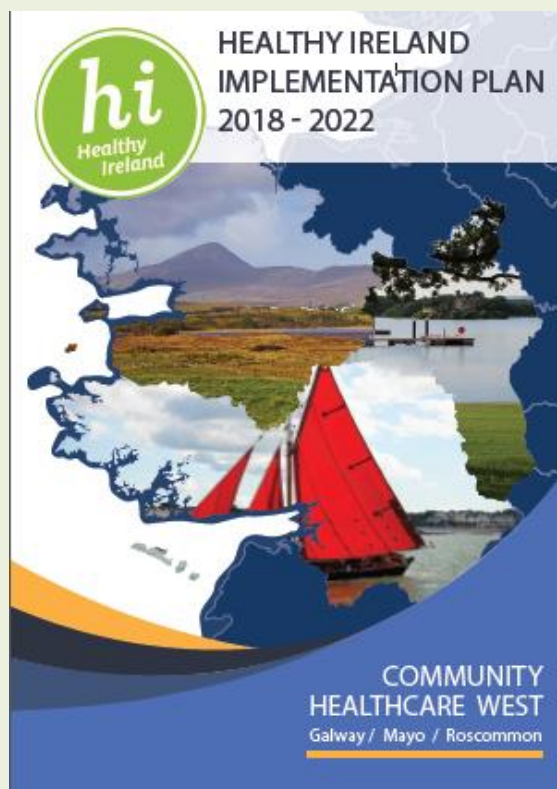


A Framework for improved health and wellbeing 2013 – 2025.

Healthy Ireland Goals

- Increase the proportion of people who are healthy at all stages of life
- Reduce health inequalities
- Protect the public from threats to health and wellbeing
- Create an environment where every individual and sector of society can play their part in achieving a Healthy Ireland

Community Healthcare West Healthy Ireland Plan



Healthy Ireland Plan Implementation

Deliverable actions under the following headings:-

- Tobacco free Ireland
- Healthy Eating and Active Living
- Alcohol
- Healthy Childhood
- Making every contact count
- Positive Ageing
- Mental Health & Wellbeing
- Self-management support
- Sexual Health
- Sustainability
- Staff Health & Wellbeing
- Cross cutting Actions – Communication & Information. Staff. Partnership with Agencies

Health and Wellbeing 2019

Priority Actions:

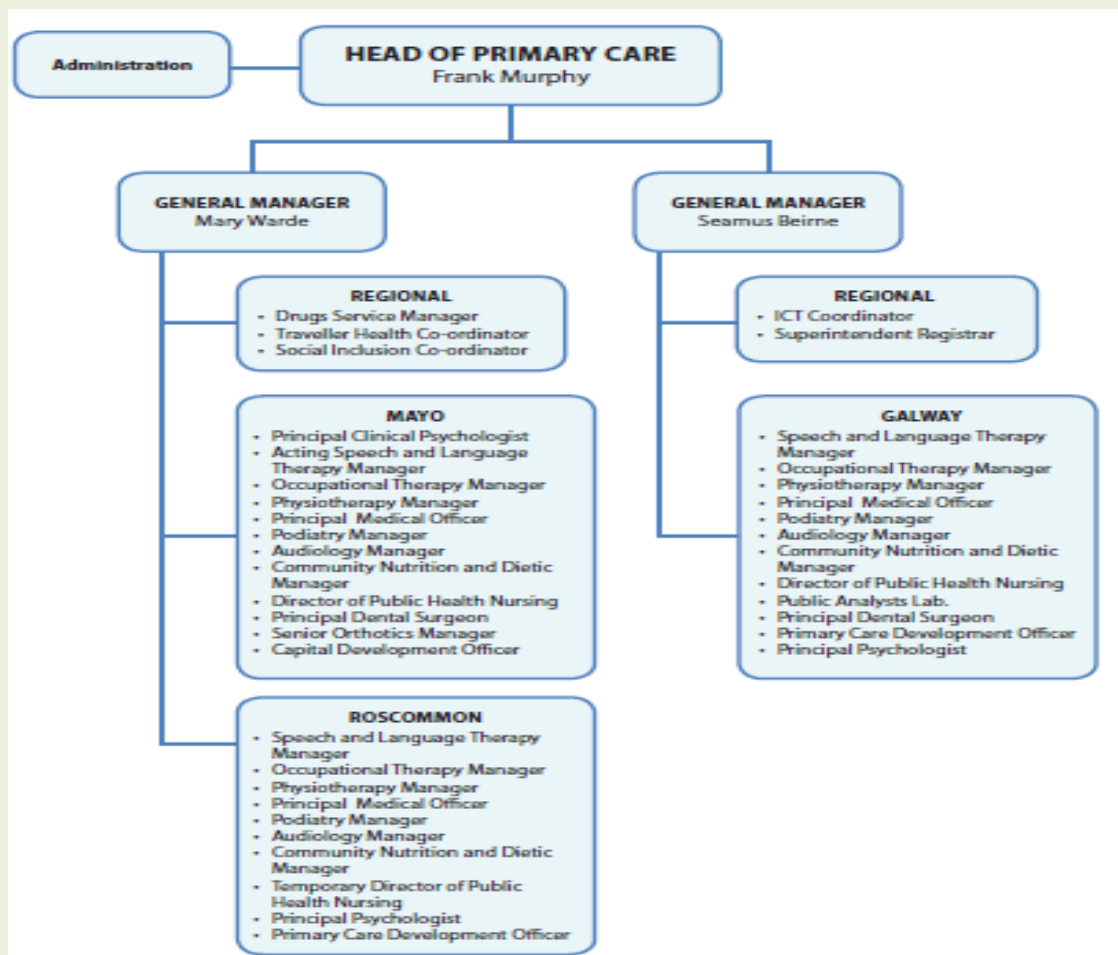
- Improve the health and wellbeing of the population by reducing the burden of chronic disease.
- Build upon *Sláintecare* and HSE structural reforms
- Early Years Intervention including the National Healthy Childhood and Nurture Infant health and Wellbeing Programmes
- Protect our population from threats to health and wellbeing through infectious disease control, immunisation and environmental health services.
- Improve staff health and wellbeing

What we fund....

In assessing the merits of a funding application the Health and Wellbeing Division will prioritise applications that align to our Strategy and Operational plan and that adhere to the standard criteria outlined on the application checklist.

Primary Care

(Padraic Carolan – CHO Lead)



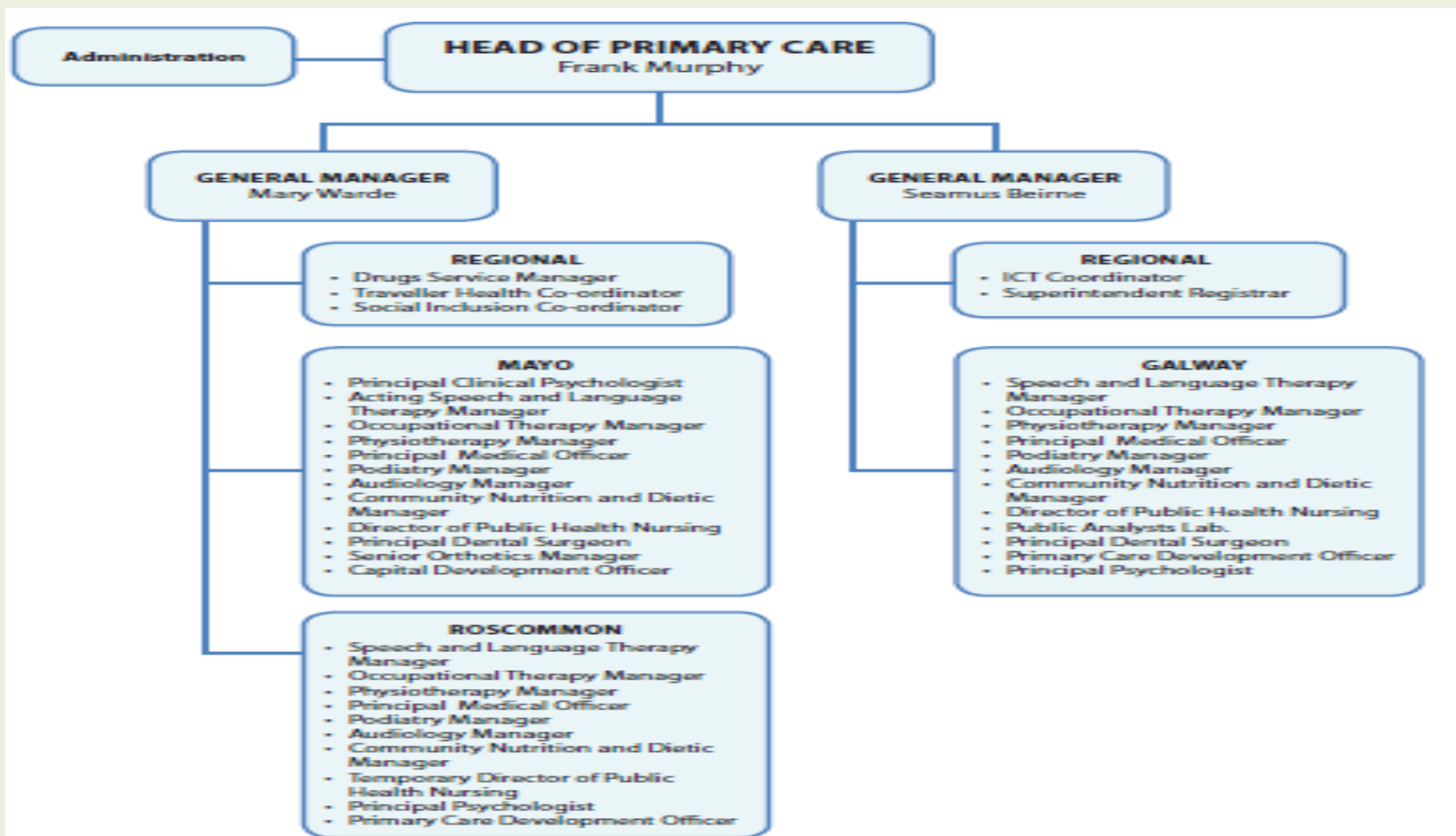


Community Healthcare West
Primary Care
Three Year Strategy
2019-2022

What is Primary Care?

1. Primary Care is the day to day healthcare given by a healthcare provider.
2. Typically this provider acts as the first contact and principal point of continuing care for patients/service users within a healthcare system.
3. Our services are generally delivered by GP's, Public Health Nurses and other allied health professionals e.g. OT, SLT, Physio.
4. The development of Primary Care services and new Primary Care facilities, in order to support service delivery, are a key objective of the *Sláintecare Report* and the preceding *Community Healthcare Report*.
5. Current strategies are focused on ensuring services are provided to the highest quality, in a safe environment, as close to the service user as possible, while ensuring value for money.

Our structure...



Services delivered include:

- ☐ Psychology
- ☐ Speech and Language Therapy
- ☐ Occupational Therapy
- ☐ Physiotherapy
- ☐ Area Medical Officers
- ☐ Podiatry
- ☐ Ophthalmology
- ☐ Audiology
- ☐ Community Nutrition and Dietetics

- ☐ Public Health Nursing
- ☐ Dental Services
- ☐ Orthotics
- ☐ Social Inclusion
- ☐ Drug Services
- ☐ Child Health Development
- ☐ GP Services
- ☐ Civil Registration Services
- ☐ Traveller Health

Primary Care Centres

• Operational

Galway

1. Galway City East
2. Inis Oirr
3. Loughrea
4. Athenry
5. Mountbellew
6. Cornamona
7. Tuam

Mayo:

1. Ballina
2. Castlebar
3. Claremorris
4. Westport
5. Ballinrobe

Roscommon:

1. Boyle
2. Roscommon Town
3. Stokestown
4. Monksland
5. Castlerea

• Proposed

Galway

1. Moycullen
2. Oranmore
3. Portumna
4. Galway City West
5. Claregalway
6. Oughterard
7. Spiddal
8. Gort
9. Inishbofin
10. Headford

Mayo

1. Ballyhaunis
2. Bangor Erris
3. Swinford

Roscommon

1. Ballaghaderreen

Service priorities

- Implementation of the Community Healthcare West Primary Care Strategy 2019 – 2021
- Establish a Haemocromatosis Clinic to support the Homecare Community Intervention Team (CIT) in Galway in association with University Hospital Galway (UHG).
- Work with our colleagues in WestDoc to develop new initiatives around GP out-of-hours services.
- Establish X-Ray and Ultrasound services in Tuam, Co Galway.
- Establish a Chronic Disease programme in the region, the aim of which is to develop integrated care for patients managed by their general practitioners and the Acute Hospitals.
- Further develop the Community Network model with the introduction of a new pilot site in Community Healthcare West.
- Implement the Primary Care Review Group Report on Eye Services.
- Continue Primary Care Centre development in the region.

What we fund....

In assessing the merits of a funding application the Primary Care Division will seek the following:

- Evidence of service need in line with our Operational Plan and Primary Care Strategy.
- Project and services should relate to Community based activity.

Mental Health Services

(Aidan Sweeney – CHO Lead)





What is Mental Health?

- Mental health describes a spectrum that extends from positive mental health, through to severe and disabling mental illness.
- A strategic goal for mental health services is to promote the mental health of our population in collaboration with other services and agencies including reducing the loss of life by suicide.



Service Delivery

- In general terms, specialist mental health services are provided to serve a particular group within the population, based on their stage of life.
- Child and adolescent mental health services (CAMHs) serve young people aged up to 18 years.
- General adult services for those aged 18 to 64 years.
- Psychiatry of later life provides services for those aged 65 years and over.



Service Priorities

- Promote the mental health of the population in collaboration with other services and agencies including reducing the loss of life by suicide.
- Design integrated, evidence-based and recovery-focused mental health services.
- Deliver timely, clinically effective and standardised safe mental health services in adherence to statutory requirements.
- Ensure that the views of service users, family members and carers are central to the design and delivery of mental health services.
- Enable the provision of mental health services by highly trained and engaged staff and fit for purpose infrastructure.



Recovery Focused Services – The Recovery Framework

A National Framework for Recovery in Mental Health

A national framework for mental health service providers
to support the delivery of a quality,
person-centred service



2018-2020

- Provides guidance to MH services to support them in ensuring they deliver a quality, person centred and recovery focused service.
- Defines Recovery in the context of a recovery oriented service.
- Recognises that a quality, recovery orientated service engages all stakeholders; Service users, Family/carers, Service providers and voluntary & community sector.
- Describes 4 core principles that underpin a recovery oriented service.
- It comprises 16 actions and 24 measures to support the implementation of the framework.



What we fund....

In assessing the merits of a funding application the mental Health Service will seek the following.

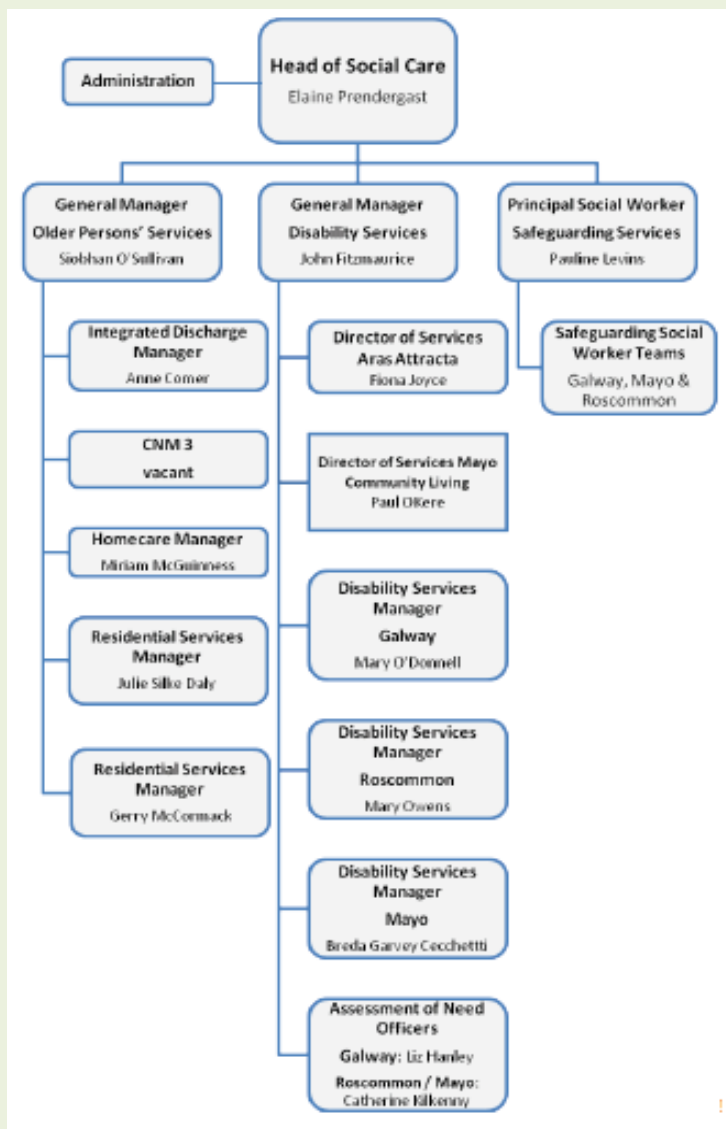
- Evidence of service need, which can be corroborated by existing HSE Mental Health Staff working in the community.
- Evidence that the proposed service is recovery focused and in line with the National Framework for Recovery in Mental Health.

Comfort Break & Networking opportunity

We will resume at 11.15 sharp

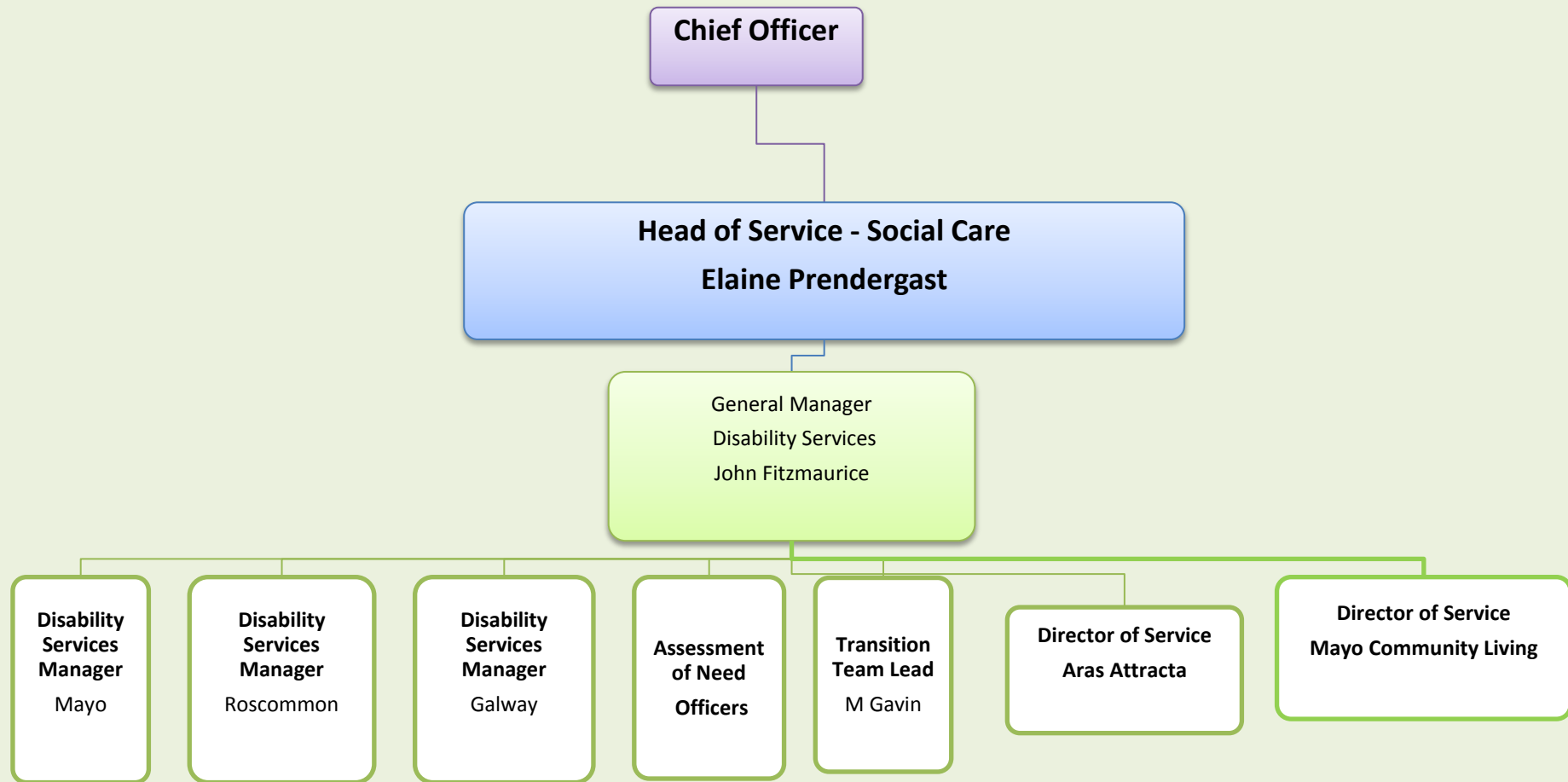
Social Care

The Social Care Division
provide services to
People with Disabilities,
Older Persons and
includes the Safeguarding
of Vulnerable Persons
Social Work Team.



Organisational & Governance Structure 2019

(Suzanne Keenan – CHO Lead)

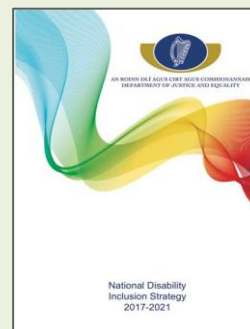


Our population

- The 2016 Census identified 13.2% 59,810 people in the Community Healthcare West were noted as having at least 1 disability.
- Demand for support always surpasses available resources and there are waiting lists across many areas of disability services.
- 3277 people in the region are registered on the National Intellectual Disability Database (NIDD).
- The National average prevalence for Intellectual Disability (ID) is 5.95 per 1,000. All three counties in the region have above average prevalence of ID. Mayo has the second highest prevalence nationally.
- 2260 people were registered on the National Physical and Sensory Disability Database (NPSDD).

What we do..

- The objective of Community Healthcare West is to enable people with disabilities, achieve their full potential, living ordinary lives in ordinary places, as independently as possible, while ensuring that the voice of service users and their families is heard and that they are fully involved in planning and improving services to meet their needs.
- This objective is supported by the ***Transforming Lives*** mainstreaming policy and the ***National Disability Inclusion Strategy 2017-2021***



How we deliver services..

- Services are provided both directly by the HSE and in partnership with voluntary, voluntary not for profit and, the for profit sectors.
- In 2018 the region had 120 different Section 38 and 39 Service Level Arrangements and Grant Aid Agreements with different organisation who support service provision in disability.

Service provision we fund...

- Multidisciplinary Team supports e.g. Physiotherapy, Occupational Therapy, Speech and Language Therapy
- Personal Assistant
- Children and Adult Respite
- Adult Residential
- Day services
- Home Sharing
- Early Intervention Supports
- School Leavers Program
- School Age supports



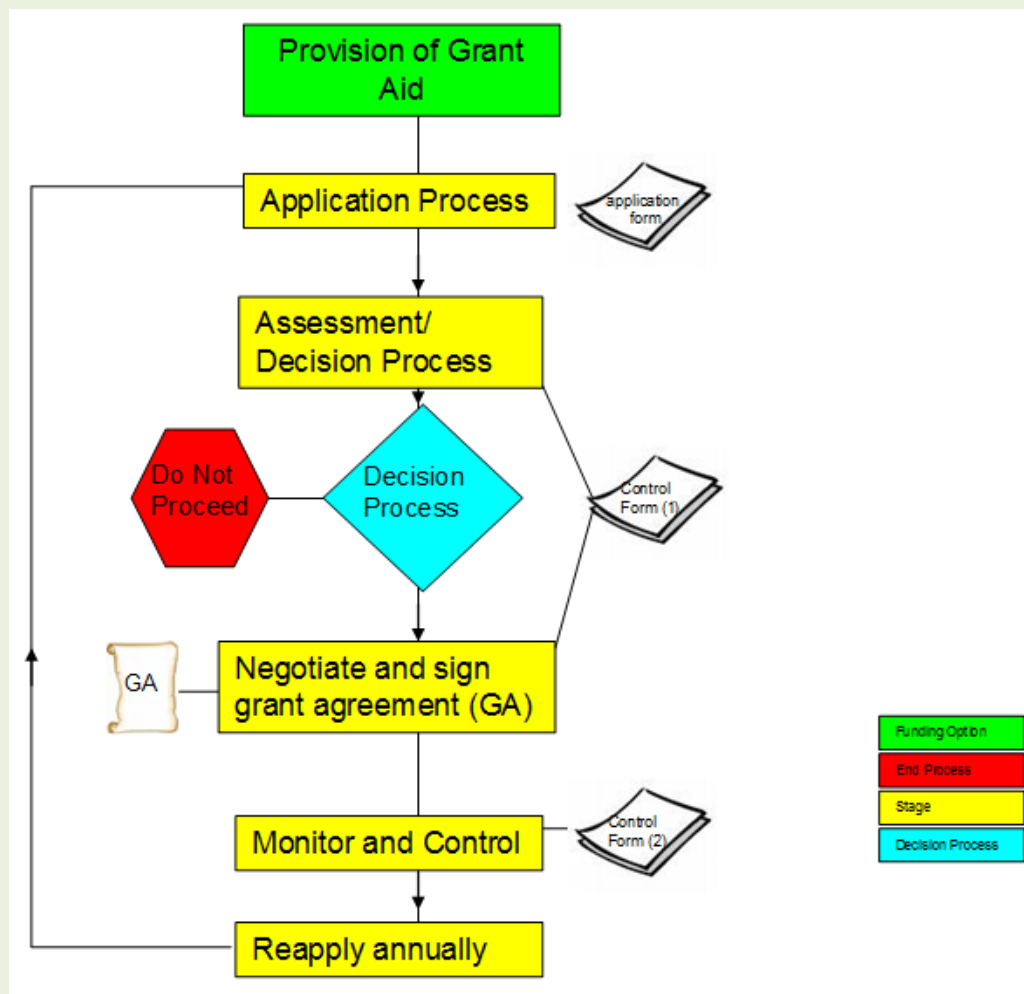
Adjudication....

In assessing the merits of a funding application Disability Services will prioritise applications that align to our Strategy and Operational plan and that adhere to the standard criteria outlined on the application checklist.

The 2020 Application process. What you need to know...



Process for the provision of Grant Aid



Application requirements

1. Annual application is essential.
2. The budget available is limited and determined by the National Service Plan.
3. Allocations are determined by relevant Adjudication Committees.
4. The Application Form can be found on HSE.ie or via the link address provided on your letter of invite:
www.hse.ie/CHWestSection39process
5. [Application Form & Checklist](#) inc. Children First Act
6. [Explanatory Guides](#)

Checklist for Application

Checklist for Application			
This checklist must accompany all applications. Please ensure that all information required above has been furnished and that the documents below are enclosed to ensure that applications are processed as quickly as possible			
Checklist	Yes	No	N/A
<i>* N/A Blacked out indicates that the requirement is mandatory</i>	Tick	Tick	Tick*
Fully Completed Application Form- To be enclosed			
Charitable Status Number or Tax Clearance Certificate - To be enclosed <i>(if grant is over €10,000)</i>			
Insurance <i>(Please tick if compliant according to requirements outlined on page 8)</i>			
External Auditors Management Letter of Previous Year- To be enclosed <i>Mandatory in organisations with annual income or expenditure over €150,000</i>			
Annual Accounts of Previous Year - To be enclosed <i>Audited Accounts must be submitted by Organisations with a yearly total income or total expenditure of over €150,000</i>			
Service Activity Report for Previous Year- To be enclosed			
Completed Projected Financial Summary (Appendix 1) for this Application - To be enclosed			
Access Admission Discharge policy- To be enclosed			
Annual Report /Chairman's Statement – Most Recent Year - To be enclosed			
Constitutional Document – confirmation that written format in place <i>(It is a requirement that your organisation has a written document outlining the aims and objectives, organisational structures, etc. – Guidance is available in the Guide for small agencies section of the HSE Web site.</i> https://www.hse.ie/eng/services/publications/non-statutory-sector/explanatory-guides.html)			

Adjudication

1. Adjudication occurs by a Committee established by the Budget holder.
2. Service needs/demands will dictate the nature of service to be funded.
3. Minimum requirements and information you need to provide include:
 - Grant Aid Agreement Controls Assurance Checklist
 - Activity level – no. of persons benefiting from the service
 - Potential benefits & outcomes
 - Integration with other services
 - Identified need i.e. evidence based
 - Demonstrated capacity of the provider to deliver funded services
 - Local needs e.g. rural base, deprivation.

2020 Application & Allocation Timelines

Applications for Section 39 funding accepted from:	14 September 2019
Closing Date	10 December 2019
Adjudication will occur by:	28 February 2020
Notification of adjudication outcome will be completed by:	28 March 2020
National Lottery campaign	Anticipated to be launched in February/March 2020
National Lottery outcome notification	Anticipated no later than 21 August 2020



Hello We Are...
The Wheel

Questions & Answers



General contact

- **Telephone:** 091 775003
- *or*
- **email:** cho2.compliance@hse.ie

Your CHO Leads

	Please contact	On Telephone number
For applications regarding funding for Disability Services	Suzanne Keenan	094 9042011
For applications regarding funding for Older persons' services	Siobhan O'Sullivan	091 861189
For applications regarding funding for Mental Health Services	Aidan Sweeney	094 9049242
For applications regarding funding for Health and Wellbeing	Sean Gordon	0949042145
For applications regarding funding for Primary Care	Padraic Carolan	0949049068



Cúram Sláinte
Phobail, Iarthar
ag freastal ar Ghallimh,
Maighéo agus Ros Comáin

Community
Healthcare West
serving Galway, Mayo
and Roscommon

A map of Ireland is shown in the background, divided into regions labeled CHO 1 through CHO 9. The text 'Thank you for your time today.' is written in a large, black, handwritten-style font across the center of the map. The words 'Community Healthcare West' are also visible in a smaller, grey font on the map.

Thank you for your
time today.

Seirbhís Sláinte
Níos Fearr
á Forbairt

Building a
Better Health
Service