



Letterkenny University Hospital

MICROBIOLOGY USER MANUAL

Change Description:

Section 1.4 Updated contact list,

Section 2.4 Removed hand delivery of Covid swabs

Transport and storage of Sputum updated (3.3 and 4)

Removed paired sera for Legionella (3.3)

Updated transport and storage of urines (3.6).

Section 4 consolidated into one table

Section 6 moved and added additional molecular/serology tests in LUH to table in 6.1,

Updated referral tests list 6.2

Effective Date: 15/02/2023

Review Date: 15/02/2025

GUIDE TO USING THIS MANUAL

This document is designed for online viewing. Printed copies not distributed by the Quality Manager are deemed UNCONTROLLED. Photocopying of this document is prohibited to ensure that only the current version is in circulation.



This User Manual has been prepared in conjunction with The Pathology Department User Manual (MP-GEN-0064) to inform the users of the Saolta University Health Care Group, Letterkenny University Hospital, Pathology Department of which services are available within the Pathology Department and how to obtain the services required.

PLEASE REFER TO DOCUMENT MP-GEN-0064, THE PATHOLOGY DEPARTMENT GENERAL USER MANUAL FOR GUIDANCE ON USING THESE DOCUMENTS.

Documents are available on Q-Pulse and also on the HSE Website <http://www.hse.ie/luhPathology>

Contents

1	INTRODUCTION.....	4
1.1	SERVICE DESCRIPTION	4
1.2	SCOPE OF SERVICE	4
1.2.1	Clinical Advisory Services	4
1.3	CONTACT DETAILS.....	5
1.4	TURNAROUND TIMES.....	5
1.5	LABORATORY ACCREDITATION.....	6
1.6	UNCERTAINTY OF MEASUREMENT.....	6
2	GENERAL GUIDELINES.....	6
2.1	COLLECTION OF SPECIMENS.....	6
2.2	SPECIMEN CONTAINERS	7
2.3	COMPLETION OF REQUEST FORMS AND SPECIMEN IDENTIFICATION.....	14
2.4	STORAGE AND TRANSPORT OF SPECIMENS TO THE LABORATORY.....	14
2.5	STORAGE OF SPECIMENS IN THE LABORATORY.....	14
3	RECOMMENDED SAMPLES TO BE SENT FROM PATIENTS WITH PARTICULAR CLINICAL SYNDROMES.....	15
3.1	SUSPECTED BACTERAEMIA, SYSTEMIC INFLAMMATORY RESPONSE SYNDROME (SIRS), SEPSIS, SEPTIC SHOCK	15
3.2	CNS INFECTIONS.....	15
3.3	RESPIRATORY TRACT INFECTION.....	16
3.4	GASTROINTESTINAL TRACT INFECTION	17
3.5	BONE AND JOINT INFECTION.....	18
3.6	URINE SPECIMENS	19
3.7	SKIN AND SUPERFICIAL WOUND SWABS	20
3.8	DEEP-SEATED WOUNDS/ABSCESSES/ POST-OPERATIVE WOUND INFECTION	20
3.9	MYCOBACTERIAL INFECTION.....	20
3.10	FUNGAL NAIL AND SKIN INFECTIONS.....	22
4	SAMPLE REQUIREMENTS FOR ROUTINE MICROBIOLOGY TESTS.....	23
5	APPROPRIATE REQUESTING OF SEROLOGY / VIROLOGY TESTS	40
5.1	ACUTE FEBRILE ILLNESS	40

This document is designed for online viewing. Printed copies not distributed by the Quality Manager are deemed UNCONTROLLED. Photocopying of this document is prohibited to ensure that only the current version is in circulation.



5.2	GASTROINTESTINAL DISEASE	40
5.3	CARDIAC DISEASE	41
5.4	NEWBORN	42
5.5	GENITOURINARY DISEASE.....	42
5.6	HAEMATOLOGY DISORDERS	44
5.7	HIV/AIDS	44
5.8	JOINT DISEASE.....	45
	NEUROLOGICAL DISEASE	45
6.10	OCULAR DISEASE.....	46
6.11	PREGNANCY.....	47
6.12	RASH	48
6.13	RESPIRATORY TRACT INFECTIONS.....	49
6.14	SYSTEMIC ILLNESS.....	50
6	SAMPLE REQUIREMENTS FOR MOLECULAR / SEROLOGY / VIROLOGY TESTS....	52
6.1	INFECTIOUS SEROLOGY, IMMUNOASSAY AND MOLECULAR TESTING PERFORMED IN LUH.....	52
6.2	MICROBIOLOGY TESTS REFERRED TO EXTERNAL LABORATORIES	56
7	EUCAST	65
8	NORMAL CSF VALUES	65
9	SEMEN ANALYSIS PROTOCOL (MF-0041).....	66



1 INTRODUCTION

This manual is designed to give an overall view of the services available in the Microbiology Laboratory at Letterkenny University Hospital. It is intended as a quick reference guide for all users of the Saolta University Health Care Group, Letterkenny University Hospital, Microbiology Department. This includes both GP and Hospital Clinicians.

Please note this manual is intended for use as a guide only.

Service Description

The department offers a comprehensive range of diagnostic services in routine Bacteriology, Parasitology, Serology and Virology. All Mycobacteriology is referred to Galway University Hospital. Mycology work (other than microscopy) on fungal isolates, with the exception of Candida species, is done by external referral laboratories. The department also offers consultation in microbiology, infectious diseases and antibiotic utilisation and provision of statistical and cumulative data for infectious disease monitoring.

The proper selection, collection and transport of specimens to the laboratory is, an essential part of the quality assurance of the microbiology laboratory. Results are reported rapidly and phoned if necessary to ensure timely intervention for optimum patient care. As part of the quality assurance process within the laboratory, turnaround times are routinely audited.

The department was accredited by the Irish National Accreditation Board (INAB) in September 2010.

Scope of Service

- Diagnostic Bacteriology including Antimicrobial susceptibility testing.
- Diagnostic Microbial Serology and Virology.
- Guidance on Antimicrobial Chemotherapy.
- Guidance on infection Prevention and Control and Outbreak Management.
- Semen Analysis (Andrology)

Clinical Advisory Services Microbiology

Dr. M. Mulhern, Consultant Microbiologist is available for Microbiology clinical advice and is contactable via switch.

This document is designed for online viewing. Printed copies not distributed by the Quality Manager are deemed UNCONTROLLED. Photocopying of this document is prohibited to ensure that only the current version is in circulation.

**Andrology**

Dr M McKernan, Consultant Gynaecologist is available for Andrology clinical advice and is contactable via switch.

Contact Details

Title	Name	Phone*	Email
Microbiology lab for general enquiries		074912 3557	
Consultant Microbiologist	Dr. Michael Mulhern	Ext 4090	michaelf.mulhern@hse.ie
Dr. Mulhern's secretary	Katriona Maguire	074910 4479	
Chief Medical Scientist (Microbiology)	Judith Rodgers	074910 4618	judith.rodgers@hse.ie
Surveillance Scientist	Carena McFadden	074912 3662	carena.mcfadden@hse.ie
Senior Medical Scientists	Des Sweeney, Laura Wilson Deirdre Cunningham Julie McGee	074 912 3610	Des.sweeney@hse.ie Laura.wilson3@hse.ie Deirdre.cunningham3@hse.ie Julie.mcgee@hse.ie
Infection Control Nurse Manager	Virginia Murray	074910 4203	virginia.murray@hse.ie
Infection Prevention & Control Team	Martina Grealish Mary Gibbons Maureen Carlin	074910 4413 #786 #504	martina.grealish@hse.ie mary.gibbons3@hse.ie Maureen.carlin@hse.ie
Consultant Gynaecologist (Andrology)	Dr. Matthew Mc Kernan	074910 4644	matthew.mckernan@hse.ie

Turnaround Times

Expected turnaround times for common requests are identified in Sections 4 and 6 . Turnaround time is defined as the time from specimen receipt in the Pathology Department to the time results are available. Turnaround times may be increased by 48 hours to allow for weekends.

The times stated are deliverable in 90% of instances in normal circumstances. There are times, due to factors outside the laboratories control, that the stated turnaround times may be exceeded. These events are infrequent and will be explained to users at the time.

This document is designed for online viewing. Printed copies not distributed by the Quality Manager are deemed UNCONTROLLED. Photocopying of this document is prohibited to ensure that only the current version is in circulation.



If the laboratory fails to meet expected turnaround times please contact Chief Medical Scientist or Laboratory Manager (see contact list in the Pathology Department User Manual (MP-GEN-0064)).

Laboratory Accreditation

The Microbiology Laboratory is currently accredited by the Irish National Accreditation Board (INAB) in compliance with the International Standard ISO/IEC 15189 (Registration number 210MT). The scope of accreditation for the Microbiology Laboratory is controlled by INAB and available on their website: <http://www.inab.ie>

Uncertainty of Measurement

Uncertainty of Measurement has been calculated for urine and CSF microscopy. Data is available to users on request

2 GENERAL GUIDELINES

Collection of specimens

Collect specimens before commencement of antimicrobial therapy. This is usually possible for most mild infections. For more serious infections, antimicrobial therapy should not be withheld pending collection of a specific specimen. For example, antimicrobial therapy should not be withheld pending collection of CSF from an individual with suspected meningitis or collection of sputum from an individual with severe pneumonia. However, blood cultures can be obtained in nearly all cases prior to antimicrobial treatment of serious infection.

If in any doubt as to the appropriate container, please contact the laboratory for advice.

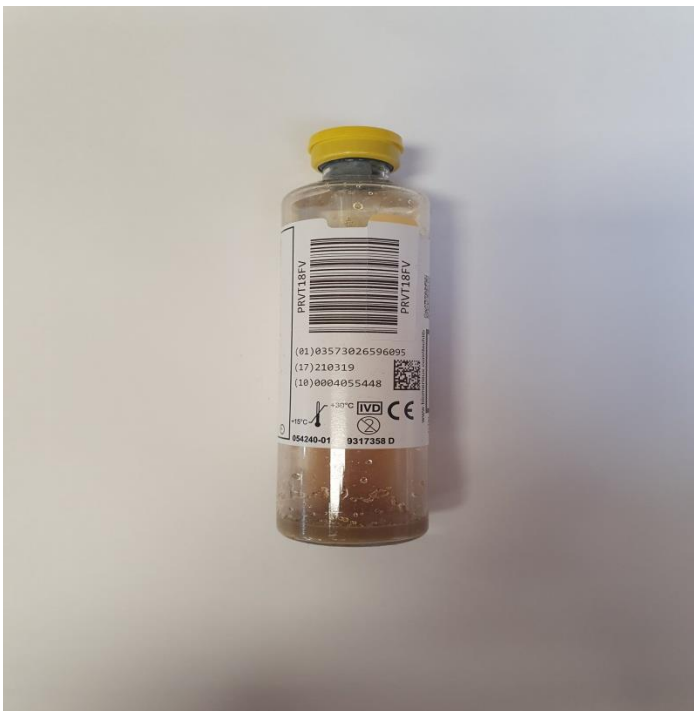
Please send an adequate amount of specimen. As a general rule – ‘the more specimen the better’. If pus is present, send pus rather than a swab and remember to send enough specimen if a series of tests are required. This applies to CSF and serology specimens in particular.



Specimen containers



Adult blood culture bottles (aerobic and anaerobic)



Paediatric blood culture bottle



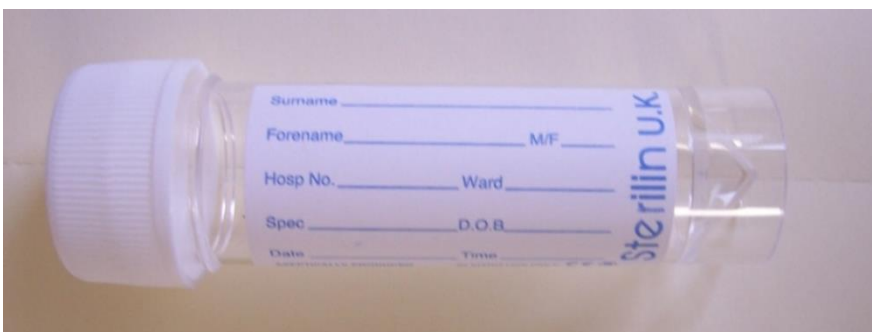
Urine collection device and urine tube

Collection device for URINE COLLECTION ONLY – Do not send to Laboratory. Do not use for other sample types.

This document is designed for online viewing. Printed copies not distributed by the Quality Manager are deemed UNCONTROLLED. Photocopying of this document is prohibited to ensure that only the current version is in circulation.



Semen analysis container- not to be used for any other sample types



Universal container (CSF, faeces, sputum, pus, sterile fluids, tissue, skin scrapings, nail clippings)



Adult serum bottle



Adult EDTA bottle



Paediatric EDTA bottles



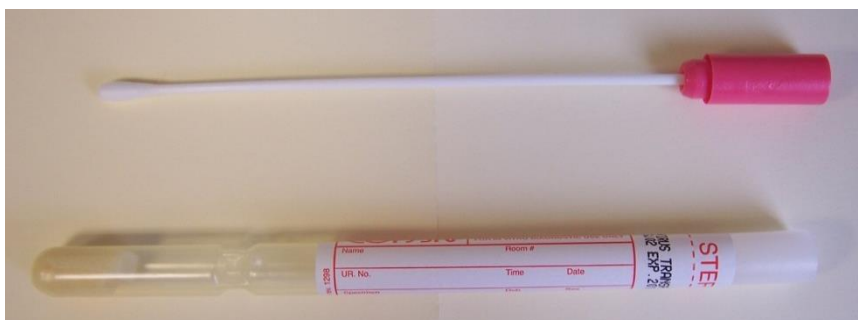
Charcoal swab for culture



Pernasal / ear swab for culture



Fecal swab (CPE & VRE)



Viral swab



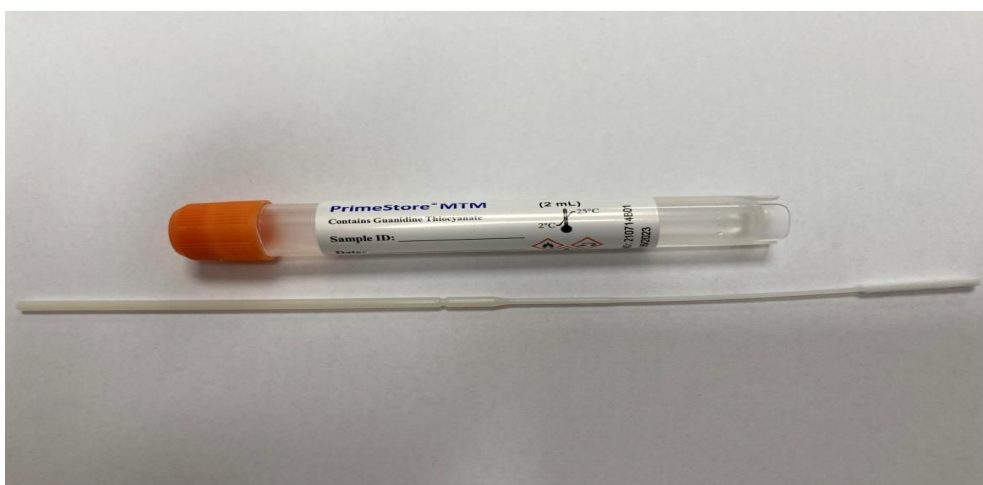
Chlamydia trachomatis/Neisseria gonorrhoeae PCR, Urine Collection



Chlamydia trachomatis/Neisseria gonorrhoeae PCR, Swab Collection



Copan Universal transport swab (MPOX, viral PCR)



Nasopharyngeal/oropharyngeal molecular transport swab (PrimeStore MTM) for Respiratory viruses including Influenza, RSV and SARS-CoV-2

Please DO NOT confuse this swab with fecal swab for CPE and VRE as illustrated above.



Completion of request forms and specimen identification

Please refer to the **General Information User Guide, MP-GEN-0064, Section 8 for sample** and request form labeling requirements. This manual is available on Q-Pulse and the HSE website <http://www.hse.ie/luhPathology>

Storage and Transport of specimens to the laboratory

Storage

Specimens should be transported as soon as possible. If processing is delayed, refrigeration is preferable to storage at ambient temperature, with the exception of Blood cultures and Cerebrospinal fluid which should be held at room temperature. It is recommended that inoculated blood culture bottles be placed onto the blood culture analyser as soon as possible after collection ideally within 4 hours. If there is an unavoidable delay, inoculated bottles may be maintained at room temperature up to 24 hours before loading onto the instrument. Blood cultures **MUST NOT** be refrigerated.

Transport

Specimens should be transported to the laboratory without delay to ensure optimal results. Please see Policy on Transport of Specimens to the Laboratory MP-GEN-0060

All specimen containers must be tightly closed and placed in a transparent hazard bag for transport to the laboratory.

It is the responsibility of the person dispatching the specimen to the laboratory to ensure that it is packaged correctly, and does not pose a risk to anyone coming in contact with it during transport or on receipt in the laboratory.

All CSF specimens are treated with priority in the Microbiology Laboratory.

Outside normal hours the requesting clinician must ensure that the on call medical scientist in Microbiology is aware that a CSF is expected.

CSF specimens should not be transported via the pneumatic tube system

Please contact the Consultant Microbiologist and the laboratory prior to sending any samples for **Mpox**.

Storage of specimens in the laboratory

Please note:

Samples received in the Microbiology Laboratory are stored at 2-8°C

Samples are retained for 48hr at 2-8°C after the final result has been issued.

This document is designed for online viewing. Printed copies not distributed by the Quality Manager are deemed UNCONTROLLED. Photocopying of this document is prohibited to ensure that only the current version is in circulation.



Subject to approval by the Consultant Microbiologist, additional examinations may be requested within 48hrs.

If an analytical or quality control failure occurs there may be a delay in reporting test results. In this event all attempts will be made for repeat testing of the primary sample however on occasion it may be necessary to request a repeat sample.

Please note: A negative Microbiology result does not exclude the presence of infection.

3 RECOMMENDED SAMPLES TO BE SENT FROM PATIENTS WITH PARTICULAR CLINICAL SYNDROMES

Suspected bacteraemia, Systemic Inflammatory Response Syndrome (SIRS), Sepsis, Septic Shock

Blood cultures - For optimum sensitivity, two sets of blood cultures should be collected from separate sites within a 24 h period. These should be taken at least 20 min apart. For patients with suspected endocarditis, three sets should be collected.

Method: Observe standard precautions, wash hands, carefully disinfect the skin with alcohol, allow to dry, wear sterile gloves, insert vacutainer into vein, collect 10 ml of blood into an aerobic and 10 ml into an anaerobic blood culture bottle. Please see Infection Control Manual for detailed description of blood culture technique. Yeasts and fungi may be detected in the normal blood culture system.

Look for a focus of infection and culture those sites appropriate to a suspected focus

CNS infections

Blood cultures

Blood cultures should be collected from all patients with suspected meningitis.

CSF

This document is designed for online viewing. Printed copies not distributed by the Quality Manager are deemed UNCONTROLLED. Photocopying of this document is prohibited to ensure that only the current version is in circulation.



CSF should be collected from all adult patients with suspected meningitis except when a clear contraindication exists (e.g. signs of raised intra-cranial pressure, focal neurological signs, severe shock, severely depressed or fluctuating conscious level, coagulation disorder). Note antimicrobials should NOT be withheld pending a lumbar puncture.

Plasma

Send 5 ml EDTA blood for bacterial PCR.

Stool

Stool specimen should also be sent for enterovirus if viral meningitis suspected.

Respiratory tract infection

Tonsillopharyngitis

Send a throat swab. Please contact the laboratory if diphtheria or pertussis is suspected.

Sinusitis:

Using a syringe aspiration technique, a specially trained physician or an ENT surgeon can obtain material from maxillary, frontal, or other sinuses. Place the contents of the syringe into a sterile universal container.

Otitis media:

Send ear swab to the laboratory.

Diagnosis of Whooping cough:

Please discuss with laboratory medical staff.

Bronchitis:

A good quality purulent or mucopurulent sputum specimen should be obtained, preferably before antimicrobial therapy.

Pneumonia:

It is not necessary to perform a full range of microbiological investigations on all patients with community-acquired pneumonia. The extent of investigation should be determined by the severity and clinical course. Specimens that should/may be sent include:

Blood cultures should be obtained from all patients with moderate to severe CAP.

Sputum: A good quality purulent or mucopurulent sputum specimen should be obtained from patients ill enough to require hospital admission or those being treated in the community and not responding to initial antibiotic therapy. Sputum should preferably be collected before antimicrobial therapy although antimicrobial therapy should not be delayed unnecessarily while awaiting a sputum specimen. The specimen should be transported to the laboratory as soon as possible. . Sputum may be refrigerated for up to 2-3h without an appreciable loss of pathogens. Any delay beyond this time may allow overgrowth of Gram-negative bacilli, and *Haemophilus* species and *S. pneumoniae* may die.



Where transport is difficult, specimens may be cultured up to 48h after collection. If specimens are not processed on the same day as they are collected, interpretation of results should be made with care.

Salivary or mucosal specimens are unsuitable and as such are not processed.

Legionella culture should be specifically requested from patients with severe community acquired pneumonia, or where *Legionella* infection is suspected on epidemiological grounds.

Urine for *Legionella* antigen and *Streptococcus pneumoniae* antigen should be obtained from all patients with severe CAP and particular patients with specific risk factors.

Pleural fluid: If a pleural effusion is present, consider aspiration into a sterile universal container at an early stage.

Bronchoscopic samples may also be required, especially among immunocompromised patients.

Pneumocystis jiroveci: diagnosis of *Pneumocystis* is carried out on bronchoscopic or induced sputum samples.

Gastrointestinal tract infection

Gastroenteritis

Please note that this laboratory employs a cost-effective approach to the diagnosis of infectious diarrhoea. Not all specimens are examined for every pathogen. It is therefore important that clinical details or suspected diagnoses are included on the request form. Information that is of use when processing specimens includes: travel history, relationship to a particular food, prolonged diarrhoea, antibiotic use, suspected outbreak.

The laboratory examines all stool samples from patients who have been in hospital for 3 days or less for:

Salmonella

Shigella

Verotoxin producing *E. coli*

Campylobacter.

Clostridoides difficile antigen and toxin detection is performed on all diarrhoeal specimens from patients >2years. (Sample must take the shape of the container).

Specimens are examined for *Cryptosporidia* from all patients up to 15 years of age. Diarrhoeal specimens are examined for *Cryptosporidia* regardless of patient age; Faecal specimens are examined for rotavirus and adenovirus from all patients up to 5 years of age.

Other pathogens e.g. *Yersinia*, *Vibrio*, *Aeromonas*, ova and parasites etc. are only examined if the clinical details suggest that possibility.



Please note the possibility of Norovirus infection and state whether vomiting is a feature or whether an outbreak is suspected. Norovirus requests must be discussed with the Infection Prevention and Control team (hospital or community) prior to sending samples.

Please send a blood culture if typhoid fever is suspected.

When to send a stool specimen: Send a stool specimen to the laboratory when there are ≥ 3 liquid or very loose stools per day. There may be other symptoms suggestive of infectious diarrhoea e.g. abdominal pain or discomfort, nausea, faecal urgency, tenesmus, fever, blood or mucus in stools. Within the hospital specimens, must be sent to the laboratory immediately. In General Practice, please refrigerate if there is to be a delay in transporting the specimen.

How many samples to send: One stool specimen is normally all that is required for culture. As microscopy for parasites is less sensitive, please send 3 specimens (but no more than 3) on different days as some parasites are excreted intermittently. If a worm is excreted, please send the worm and faeces sample.

How much to send: Please fill the specimen container to between $\frac{1}{4}$ and $\frac{1}{2}$ full. Please do not fill to the brim.

Rectal swabs

Rectal swabs are collected primarily for the detection of carriage of Vancomycin-Resistant *Enterococci* (VRE), Carbapenamase producing enterobacterales (CPE), or for culture for *Neisseria gonorrhoeae*. Insert swab about 2 cm into anal cavity, rotate and send specimen to laboratory.

Bone and joint infection

Osteomyelitis

Blood culture: Blood cultures should be performed on all patients with suspected osteomyelitis, preferably before antibiotics are started.

Bone biopsy: A biopsy of bone is the preferred specimen for the establishment of a diagnosis of osteomyelitis and the causative agent. The biopsy should be placed in a sterile universal container with saline and transported to the laboratory as quickly as possible. It is also preferable to send multiple specimens (3 or 4) especially in cases of infection associated with a prosthetic device as this makes interpretation easier if a skin organism is recovered. Consider requesting mycobacterial culture from high-risk groups.

Septic arthritis

Blood cultures: Blood cultures should be performed on all patients with septic arthritis, preferably before antibiotics are started.

Joint aspirate: A joint aspirate obtained using an aseptic technique should be submitted in a sterile universal container from all patients with septic arthritis.

Polyarticular arthritis

This document is designed for online viewing. Printed copies not distributed by the Quality Manager are deemed UNCONTROLLED. Photocopying of this document is prohibited to ensure that only the current version is in circulation.



Send blood cultures and joint aspirate. Consider sending serum for Lyme disease antibodies. Viral causes also include Parvovirus and Rubella. See Section 4 for appropriate specimens to take.

Chronic septic arthritis

Consider requesting serum for antibodies to Brucella, culture of joint aspirate for mycobacteria and fungi.

Reactive arthritis

Faeces culture may be requested for *Salmonella*, *Shigella*, *Campylobacter* and *Yersinia*.

Send a serum specimen and request antibodies to *Campylobacter* and *Yersinia*. In rheumatic fever, send a throat swab and serum for ASO titre.

If a sexually transmitted aetiology is suspected then urethral, cervical or rectal swabs may be taken for gonococcal or chlamydial detection.

Urine specimens

When should you send a sample of urine:

It is probably reasonable to treat a young sexually active female with symptoms of simple cystitis empirically but a urine specimen should be sent for microbiological examination from all other cases. In severe or complicated UTI, a follow-up specimen should be taken 5 days post completion of antibiotic therapy. Persistence of bacteriuria implies a structural abnormality.

A specimen should be sent from patients with symptoms as asymptomatic bacteriuria is generally not a cause for concern except in pregnant women and patients undergoing surgery on the genito-urinary tract. The role of asymptomatic bacteriuria in children is controversial.

The same applies to patients with in-dwelling urinary catheters. Bacteriuria occurs in the vast majority of patients who are catheterised for more than 5 days, a urine specimen should only be sent if there are symptoms or signs suggestive of a urine or a systemic infection.

What type of specimen should you send?

Send a mid-stream specimen of urine (MSU) where possible. Patients should be instructed to pass a little urine into the toilet first, then pass urine into the urine collection container (yellow cap) and finish urinating into the toilet. The nurse or doctor should fill a urine vacuum tube via the yellow capped collection container and transport it to the laboratory without delay. Ideally, specimens should be transported and processed within 4hrs. If this is not possible, specimens should be stored at 4°C until processing.

Results of specimens which are >48hrs old at time of processing, should be interpreted with caution.

Rapid transport, culture or measures to preserve the sample, aid reliable laboratory diagnosis. Delays and storage at room temperature allow organisms to multiply, which generate results that do not reflect the true clinical situation.



Never obtain urine from a bedpan or commode.

A clean catch urine may also be obtained if the patient cannot co-operate.

A catheter specimen of urine (CSU) may also be sent to the laboratory. Urine should be obtained from an already catheterised patient by a syringe and needle from the catheter before it enters the collection bag. Clean the access point with a swab saturated with 70% isopropyl alcohol and allow time to dry. Using a sterile syringe and needle (if necessary), aspirate the required amount of urine from the access point and fill a urine vacuum tube. Re-clean access point with a swab saturated with 70% isopropyl alcohol.

Skin and superficial wound swabs

Note that routine sampling of skin lesions that do not appear clinically infected should generally not be performed. If there is a clinically infected lesion, please send a sample of pus in a universal container wherever possible. Pus is always preferable to a swab. If there is insufficient specimen, then use a swab, sample the infected area and send to the laboratory.

Deep-seated wounds/abscesses/ post-operative wound infection

Please send a sample of pus in a universal container wherever possible. Pus is always preferable to a swab. If there is insufficient specimen, then use a swab, sample the infected area and send to the laboratory. Clean the surface of the wound with sterile saline or water before taking the swab.

Mycobacterial Infection

Active Tuberculosis infection

The diagnosis of mycobacterial infection requires special staining and culture techniques. These investigations are currently performed in the microbiology laboratory at Galway University Hospitals. Please ensure that you request TB culture on the request form and attach a danger of infection label.

If standard bacteriological culture and sensitivities are required in addition to mycobacterial investigation, a separate specimen is necessary.

Suitable specimens:

The following is a list of suitable specimens to submit:

- Good quality early morning Sputum x3
- Specimens obtained at Bronchoscopy
- Pus
- CSF, Pleural, Peritoneal, Joint and other Sterile Fluids
- Tissue

This document is designed for online viewing. Printed copies not distributed by the Quality Manager are deemed UNCONTROLLED. Photocopying of this document is prohibited to ensure that only the current version is in circulation.



- Lymph node biopsy
- Pus aspirated from lymph nodes
- Pleural biopsy
- Surgical sample for routine culture
- Radiological sample for routine culture
- Histology sample where non-respiratory TB is a possibility
- Aspiration sample where non-respiratory TB is a possibility
- Bone
- Gastric aspiration
- Blood
- Bone marrow
- Urine in certain circumstances (must be discussed with Consultant Microbiologist)

Unsuitable specimens:

The following is a list of unsuitable specimens that will usually be rejected by the laboratory:

Poor quality sputum specimens e.g. salivary specimens or specimens of minute quantities

Swabs

Faeces

Urine, except when: A diagnosis of renal tuberculosis is suspected or the patient is immunocompromised or following prior discussion Consultant Microbiologist.

An early morning full void sample, taken into a sterile plastic container, should be procured and immediately submitted to the microbiology laboratory on each of three consecutive days. Special containers are available from the laboratory.

Sputum specimens: Three consecutive early morning specimens should be submitted before the commencement of therapy. The specimen should be coughed from deep within the lungs. Specimens obtained at bronchoscopy: Specimens should be placed in a sterile universal container and transported to the laboratory without delay.

Tissue: Tissue is preferable to necrotic material. Do not place any fixatives in the sterile universal container. If there is a possibility that the specimen may dry out before it reaches the laboratory, then sterile saline may be added to the container.

Blood: Blood may be useful for the diagnosis of non-tuberculous mycobacterial infection in profoundly immunosuppressed individuals. Please contact the laboratory for advice.

Bone marrow: Please contact the laboratory to discuss prior to collection.

CSF/sterile bodily fluids: The yield from examination of CSF specimens is dependant on the volume obtained. Ideally 10 ml should be obtained. Similarly, about 10 ml should be submitted for mycobacterial culture from other normally sterile bodily fluids e.g. pleural, ascitic, joint.



Latent Tuberculosis infection

In-vitro immunological assays called Interferon-Gamma Release Assays (IGRA) have been developed to diagnose latent TB infection. Samples for QuantiFERON-TB Gold® are referred to external laboratories (see section 6.). IGRA can be used as an adjunct to screening certain patient populations in addition to a medical history, chest X-ray and TST.

Fungal nail and skin infections

Affected areas should be scraped with a blunt scalpel to harvest affected hairs, broken-off hair stubs and scalp scale. This is preferable to plucking, which may remove uninvolved hairs. Scrapings should be transported in a folded square of paper preferably fastened with a paper clip, but commercial packs are also available (e.g. 'Mycotrans'). It is easier to see affected hairs on white paper rather than black.



4 SAMPLE REQUIREMENTS FOR ROUTINE MICROBIOLOGY TESTS

Sample	Specimen and container	Frequency of analysis	Turnaround time	Notes
Abscess culture	Pus in sterile universal container or charcoal swab	7 days	Microscopy: same day Aerobic culture: 2-3 days Anaerobic culture: 5 days	<p>Clean the surface of the wound with sterile saline or water before sampling the deepest part of the wound trying to avoid the superficial microflora. Where possible specimen collection should occur before antimicrobial therapy has been initiated.</p> <p>Ideally all samples are processed as soon as possible as the recovery rate of anaerobes is compromised if the transport time exceeds 3 hours due to their susceptibility to air. The volume of specimen influences the transport time that is acceptable. Large volumes of purulent material maintain the viability of anaerobes for longer.</p> <p>Recurrent staphylococcal furunculosis is highly infectious and may be the first sign of an underlying disease such as diabetes mellitus.</p> <p>Aspiration of dental abscesses is necessary to obtain samples containing the likely causative organisms. Swabs are likely to be contaminated with superficial commensal flora.</p>
Ascitic fluid	5ml in sterile universal container* EDTA sample required for cell counts	7 days	Microscopy: Same day Culture: 2-3 days	<p>* May also be directly inoculated into Blood culture bottles. However further tests such as gram stain, cell count and protein cannot be performed unless an additional sample is supplied.</p>



Sample	Specimen and container	Frequency of analysis	Turnaround time	Notes
Bile fluid	5-10ml in sterile universal container	7 days	Microscopy: Same day Culture: 2-3 days	<p>Bile is normally sterile but colonisation may occur, frequently with a mixture of aerobes and anaerobes originating from the gut. Occasionally instrumentation or stenting may lead to colonisation or infection, which lead on to bacteraemia. Fever, previous endoscopic or percutaneous biliary instrumentation, and bilioenteric anastomosis are significant predictors of a positive bile culture.</p> <p>Bile may be collected in theatre or from a closed drainage system by aspiration with a syringe and needle.</p>
Biopsy	Sterile universal container. Immerse in sterile saline if likely to dry out.	7 days	Microscopy: Same day Culture: 2-3 days	
Blood culture	Adult patients: 10 ml of blood in an aerobic (green) and 10ml in an anaerobic (purple) blood culture bottle. Paediatric patients: 1-2 mL from neonates, 2-3 mL from	24/7	<p>Negative report in 5 days.</p> <p>Gram stain result reported electronically and phoned to ward within 2 hours of flagging positive.</p> <p>Identification and susceptibility results</p>	<p>For optimum sensitivity, two sets of blood cultures should be collected from separate sites. These should be taken at least 20 min apart. For patients with suspected endocarditis, three sets should be collected. Look for a focus of infection and culture those sites appropriate to a suspected focus.</p> <p>When taking a blood culture observe standard precautions, wash hands, carefully disinfect the skin with alcohol, allow to dry, wear sterile gloves, insert vacutainer into vein, collect 10 ml of blood</p>



Sample	Specimen and container	Frequency of analysis	Turnaround time	Notes
	infants and 3-5 mL from pre-teen children in a paediatric (yellow) blood culture bottle.		24-48 hours from availability of isolate.	<p>into an aerobic and 10 ml into an anaerobic blood culture bottle.</p> <p>It is recommended that inoculated blood culture bottles be placed on to the blood culture analyser as soon as possible after collection ideally within 4 hours. If there is an unavoidable delay, inoculated bottles may be maintained at room temperature up to 24 hours before loading onto the instrument. Blood cultures MUST NOT be refrigerated.</p> <p>All gram stain, identification and culture results are communicated to the Consultant Microbiologist who will provide clinical advice to clinicians.</p>
Bone Marrow	Bone marrow biopsy/aspirate in sterile universal container. Special bottle required for Mycobacterial culture. Please contact the laboratory for advice prior to taking sample.	7 days	Culture: 2 - 3 working days, Mycobacterial culture: up to 7 weeks, Fungal culture: 14 working days	



Letterkenny University Hospital

Pathology Department

Prepared By Dr MM/JR

MP-MICRO-0025 Microbiology User Manual

Page 26 of 66

Revision 20

Sample	Specimen and container	Frequency of analysis	Turnaround time	Notes
Bordetella pertussis	Pernasal charcoal swab	7 days	7-8 days	
Bronchoalveolar lavage/washings	Sterile universal container	7 days	Microscopy: 1 day, Culture: 2 - 3 working days, Mycobacterial culture: up to 7 weeks.	Recovery and recognition of organisms responsible for pneumonia depends on The adequacy of the lower respiratory tract specimen Avoidance of contamination by upper respiratory tract flora The fastidiousness of organisms involved The use of suitable microscopical techniques and culture methodology Gram staining may be useful to predict results of quantitative culture. In some cases antimicrobial chemotherapy may be initiated on the results of the Gram stain before culture results are available. Specimens should be collected before antimicrobial therapy has been initiated where possible. Culture for Legionella species may still be successful after antimicrobial therapy has been started.
Carbapenemase Producing Enterobacterales (CPE)	Rectal swab taken using Copan fecal swab	7 days	2-3 working days	Screening for CPE includes:

This document is designed for online viewing. Printed copies not distributed by the Quality Manager are deemed UNCONTROLLED. Photocopying of this document is prohibited to ensure that only the current version is in circulation.



Letterkenny University Hospital

Pathology Department

Prepared By Dr MM/JR

MP-MICRO-0025 Microbiology User
Manual

Page 27 of 66

Revision 20

Sample	Specimen and container	Frequency of analysis	Turnaround time	Notes
				<p>The following people must be offered screening for CPE in acute hospitals.</p> <p>a. All people who were transferred from any other hospital in Ireland or elsewhere.</p> <p>b. All people who have been inpatients in any hospital in Ireland or elsewhere any time in the previous twelve months. Any hospital includes previous admissions to the hospital to which they are now being admitted.</p> <p>c. All people who normally reside in a long term care facility for older people.</p> <p>d. All admissions to and all transfers to Intensive Care Units and High Dependency Units on admission and weekly thereafter.</p> <p>e. All admissions to and all transfers to haematology, oncology and transplant wards on admission and weekly thereafter.</p> <p>f. People undergoing renal dialysis for the first time in a dialysis unit, periodically during dialysis treatment (preferably every three months but not less than every six months), and on return from dialysis elsewhere.</p>

This document is designed for online viewing. Printed copies not distributed by the Quality Manager are deemed UNCONTROLLED. Photocopying of this document is prohibited to ensure that only the current version is in circulation.



Sample	Specimen and container	Frequency of analysis	Turnaround time	Notes
				<p>g. All people who were formerly colonised with CPE but who have subsequently met the criteria for removal of that designation.</p> <p>h. Other people where CPE screening is requested by the IPC team.</p> <p>Contact screening: Samples should be taken at intervals of at least one week apart. The last sample should be taken at least four weeks after the latest date of exposure.</p> <p>Screening of staff: this is not routinely recommended.</p>
Cerebrospinal Fluid (CSF) – should be collected from all patients with suspected meningitis	THREE sequentially labelled sterile universal containers (routine culture and biochemistry). For other tests eg. Viral or bacterial PCR, TB, Xanthochromia: an extra specimen should be collected for	24/7	Microscopy: 2 hrs. Positive results telephoned to ward. All results (positive and negative) available on LIS. Culture: 2 - 3 days.	<p>CSF should be collected from all adult patients with suspected meningitis except when a clear contraindication exists (e.g. signs of raised intra-cranial pressure, focal neurological signs, severe shock, severely depressed or fluctuating conscious level, coagulation disorder) or if there is a confident clinical diagnosis of meningococcal infection with a typical rash.</p> <p>Note: Antimicrobials should NOT be withheld pending a lumbar puncture.</p> <p>Healthcare workers should wear a surgical mask when performing a lumbar puncture to prevent a potential healthcare associated infection.</p>



Letterkenny University Hospital

Pathology Department

Prepared By Dr MM/JR

MP-MICRO-0025 Microbiology User Manual

Page 29 of 66

Revision 20

Sample	Specimen and container	Frequency of analysis	Turnaround time	Notes
	each test. Samples for Xanthochromia should be protected from light.			
Cervical swab culture	Charcoal swab (unsuitable for Chlamydia PCR)	7 days	Microscopy: 24 hours, Culture : 2 - 3 working days	Appropriate specimens are often difficult to obtain and incorrect or sub-optimal specimens are often received. It is important to avoid contamination with vulva faecal flora during collection of specimens. Use a speculum without lubricant. Wipe the cervix clean of vaginal secretions and mucus. Gently insert a swab into the endocervical canal and rotate inside the endocervix to obtain any exudate. Place the swab in transport medium. Cervical, endocervical, and female urethral specimens have a gram stains performed.
Cryptosporidium	Faeces in sterile universal container	7 days. Please send 3 specimens (but no more than 3) on different days as oocysts can be excreted intermittently	1-2 working days	Please note that this laboratory employs a cost-effective approach to the diagnosis of infectious diarrhoea. Not all specimens are examined for every pathogen. It is therefore important that clinical details or suspected diagnoses are included on the request form. Information that is of use when processing specimens includes: travel history, relationship to a particular food, prolonged diarrhoea, antibiotic use, suspected outbreak. With the exception of all patients up to 15 years and all watery specimens,

This document is designed for online viewing. Printed copies not distributed by the Quality Manager are deemed UNCONTROLLED. Photocopying of this document is prohibited to ensure that only the current version is in circulation.



Sample	Specimen and container	Frequency of analysis	Turnaround time	Notes
				Cryptosporidium are only examined if the clinical details suggest that possibility.
Ear	Pus or exudates are always preferable to a swab. If insufficient for collection, swab any pus or exudate. Sterile universal container or charcoal swab.	7 days	2 - 3 working days	<p>Where possible specimen collection should occur before antimicrobial therapy and always when pus or exudate is present.</p> <p>Respiratory syncytial virus and parainfluenza viruses have been isolated from middle ear effusions and may have a role in the aetiology of otitis media especially in children. Use a 'pink' top viral culture swab if indicated.</p> <p>Mycotic infection of the ear is a superficial, chronic or subacute infection of the external auditory canal. Fungal infection accounts for two to ten percent of cases of otitis externa, and most frequently occurs after treatment of bacterial infection. Superficial infection with candida occurs more commonly in patients who use hearing aids. For investigation of fungal infection, scrapings of material from the ear canal are preferred although swabs can also be used.</p>



Letterkenny University Hospital

Pathology Department

Prepared By Dr MM/JR

MP-MICRO-0025 Microbiology User Manual

Page 31 of 66

Revision 20

Sample	Specimen and container	Frequency of analysis	Turnaround time	Notes
Eye	Sterile universal or charcoal swab. Any available pus is sampled as well as the lesion of interest	7 days	2 - 3 working days	Separate swabs in appropriate transport media are needed for the diagnosis of viral and chlamydial infections.
Faeces culture	Faeces in sterile universal container	7 days	2-3 working days	<p>Salmonella, Shigella, Campylobacter and VTEC cultured routinely.</p> <p>Other enteric pathogens e.g. Yersinia, Vibrio, Aeromonas, ova and parasites etc. are only examined if the clinical details suggest that possibility.</p> <p>Norovirus testing is performed in the Immunology Department at LUH. Discuss with Infection Prevention and Control/Consultant Microbiologist prior to sending specimens.</p> <p>Please send a blood culture if typhoid fever is suspected.</p> <p>Rotavirus and Adenovirus testing is performed on all children <5 years old.</p>
Fungal culture - systemic	Pus/aspirate, Tissue/biopsy,	7 days	Microscopy: 24 hours, Culture: 3-4 weeks	Specimens are collected at onset of symptoms, and before antifungal therapy, where possible.

This document is designed for online viewing. Printed copies not distributed by the Quality Manager are deemed UNCONTROLLED. Photocopying of this document is prohibited to ensure that only the current version is in circulation.



Letterkenny University Hospital

Pathology Department

Prepared By Dr MM/JR

MP-MICRO-0025 Microbiology User Manual

Page 32 of 66

Revision 20

Sample	Specimen and container	Frequency of analysis	Turnaround time	Notes
	BAL/sputum, CSF, Blood culture, Bone marrow, Ear swab or other in sterile universal container, charcoal swab or blood culture bottles			<p>Sufficient volume of pus/tissue/biopsy/other in sterile container transported directly to the laboratory. Specimens for subcutaneous mycological investigation are processed as soon as possible after collection. All specimens submitted for fungal culture should have microscopy performed.</p> <p>Fungal isolates may be referred to an external reference for identification and sensitivities.</p>
Gentamicin assay	Serum	7 days 8am-8pm	24 hours	<p>Refer to "LUH Empiric Antibiotic Guidelines".</p> <p>Contact Dr M Mulhern, Cons. Microbiologist, if necessary.</p> <p>Test performed in Biochemistry Department. Consult Biochemistry User Manual for current reference ranges.</p>
High vaginal swab – culture	Charcoal swab	7 days	Microscopy for Bacterial vaginosis/Trichomonas vaginalis: 1-2 working days, Culture: 2-3 working days	<p>Appropriate specimens are often difficult to obtain and incorrect or sub-optimal specimens are often received. It is important to avoid contamination with vulva faecal flora during collection of specimens. After the introduction of the speculum, roll the swab firmly over the surface of the vaginal vault. Then place the swab in transport medium with charcoal. To detect <i>Trichomonas vaginalis</i>, the posterior fornix, including any obvious candidal plaques are swabbed. A range of sexually transmissible organisms cause</p>

This document is designed for online viewing. Printed copies not distributed by the Quality Manager are deemed UNCONTROLLED. Photocopying of this document is prohibited to ensure that only the current version is in circulation.



Sample	Specimen and container	Frequency of analysis	Turnaround time	Notes
				<p>infections responsible for a large number of clinical syndromes. When a specific STI is diagnosed, it is recommended to screen for other infections. Screening has a role in helping to control gonorrhoea, syphilis, chlamydial infection, and human immunodeficiency virus (HIV) infection</p> <p>Bacterial Vaginosis (BV) is now considered to be associated with a variety of genital tract infections and complications. BV may be diagnosed clinically if three of the following four criteria are fulfilled:</p> <ul style="list-style-type: none">? Grey-white, thin homogenous discharge? Vaginal secretions pH > 4.5? Positive amine odour test (release of fishy amine odour when vaginal secretion is mixed with 5-10% potassium hydroxide)? Presence of clue cells on microscopic examination
Joint fluid – culture	5-10ml in sterile universal container. EDTA sample required for cell count.	7 days	Microscopy: Same day. Culture: 2-3 days	<p>Blood cultures should also be collected on all patients with septic arthritis, preferably before antibiotics are started.</p> <p>Urgent requests must be phoned to the laboratory.</p>
MRSA screen	Charcoal swabs: nose and groin. Other sites as appropriate.	7 days	2-3 working days	<p>Screening for MRSA includes:</p> <p>Those patients previously positive.</p>



Letterkenny University Hospital

Pathology Department

Prepared By Dr MM/JR

MP-MICRO-0025 Microbiology User
Manual

Page 34 of 66

Revision 20

Sample	Specimen and container	Frequency of analysis	Turnaround time	Notes
				<p>Patients admitted to LUH from another hospital or healthcare facility or those known or suspected to have MRSA.</p> <p>Patients during an outbreak.</p> <p>ITU and other high-risk areas.</p> <p>Discharge Screening: there is no indication for routine discharge screening.</p> <p>Screening of staff: this is not routinely recommended.</p> <p>Screening of MRSA carriers: three negative swabs from previously positive sites, preferably at weekly intervals, are required for clearance. Swabs should only be sent once antimicrobials with activity against MRSA have been discontinued for 48 hours.</p>
Pericardial fluid/aspirate	Sterile universal container. EDTA sample required for cell count.	7 days	Microscopy: Same day Culture: 2-3 working days.	
Peritoneal/Ascitic fluid	Sterile universal container. EDTA sample required for cell count.	7 days	Microscopy: Same day Culture: 2-3 working days.	

This document is designed for online viewing. Printed copies not distributed by the Quality Manager are deemed UNCONTROLLED. Photocopying of this document is prohibited to ensure that only the current version is in circulation.



Letterkenny University Hospital

Pathology Department

Prepared By Dr MM/JR

MP-MICRO-0025 Microbiology User
Manual

Page 35 of 66

Revision 20

Sample	Specimen and container	Frequency of analysis	Turnaround time	Notes
Sputum	Sterile universal container	7 days	2-3 working days.	<p>A good quality purulent or mucopurulent sputum specimen should be obtained from patients ill enough to require hospital admission or those being treated in the community and not responding to initial antibiotic therapy. Sputum should preferably be collected before antimicrobial therapy although antimicrobial therapy should not be delayed unnecessarily while awaiting a sputum specimen. The specimen should be transported to the laboratory as soon as possible. . Sputum may be refrigerated for up to 2-3h without an appreciable loss of pathogens. Any delay beyond this time may allow overgrowth of Gram-negative bacilli, and <i>Haemophilus</i> species and <i>S. pneumoniae</i> may die.</p> <p>Where transport is difficult, specimens may be cultured up to 48h after collection. If specimens are not processed on the same day as they are collected, interpretation of results should be made with care. Salivary or mucosal specimens are unsuitable and as such are not processed. Specific aetiological agents have been associated with certain underlying diseases. It is therefore important to include all relevant clinical information.</p> <p>Care must be taken in interpreting a Gram-stained sputum smear as the use of anti-microbials may render organisms, which are visible in the smear, non-viable .</p>

This document is designed for online viewing. Printed copies not distributed by the Quality Manager are deemed UNCONTROLLED. Photocopying of this document is prohibited to ensure that only the current version is in circulation.



Letterkenny University Hospital

Pathology Department

Prepared By Dr MM/JR

MP-MICRO-0025 Microbiology User
Manual

Page 36 of 66

Revision 20

Sample	Specimen and container	Frequency of analysis	Turnaround time	Notes
				TB culture is not routinely performed on sputum samples, please request this specifically if clinically indicated.
Throat swab	Charcoal swab	7 days	2-3 working days.	<p>Throat swab taken from the tonsillar area and/or posterior pharynx avoiding the tongue and uvula. Hold samples at room temperature.</p> <p>The most common cause of bacterial pharyngitis is Lancefield group A streptococcus. Most laboratory procedures concentrate primarily on this organism. However a proportion of healthy individuals are carriers of Lancefield group A streptococcus and its isolation does not necessarily imply a role in infection. Lancefield group A streptococcal pharyngitis may be associated with extrapharyngeal manifestations such as rheumatic fever, toxic-shock-like syndrome and glomerulonephritis.</p>
Tip culture	Distal 3cm of line cut with sterile scissors in sterile universal container	7 days	Culture: 2-3 working days.	Only send tips from lines that are suspected to be infected. Specimens received without appropriate clinical information will be rejected.
Urine culture	5ml urine in urine tube	7 days	1-4 days	It is probably reasonable to treat a young sexually active female with symptoms of simple cystitis empirically but a urine specimen should be sent for microbiological examination from all other cases. In severe or complicated UTI, a follow-up

This document is designed for online viewing. Printed copies not distributed by the Quality Manager are deemed UNCONTROLLED. Photocopying of this document is prohibited to ensure that only the current version is in circulation.



Letterkenny University Hospital

Pathology Department

Prepared By Dr MM/JR

MP-MICRO-0025 Microbiology User
Manual

Page 37 of 66

Revision 20

Sample	Specimen and container	Frequency of analysis	Turnaround time	Notes
				<p>specimen should be taken 5 days post completion of antibiotic therapy. Persistence of bacteriuria implies a structural abnormality.</p> <p>Send a mid-stream specimen of urine (MSU) where possible. Specimens should be processed within 4 hours. In General Practice if transport to the laboratory has to be delayed, the specimen can be stored at 4° C for up to 48 hours.</p> <p>A catheter specimen of urine (CSU) may also be sent to the laboratory although as bacteriuria occurs in the vast majority of patients who are catheterised for more than 5 days, a urine specimen should only be sent if there are symptoms or signs suggestive of a urine or a systemic infection.</p> <p>Microscopy is performed on specimens from the following patient groups:</p> <p>Antenatal patients (from ward, clinic and GP)</p> <p>Renal Dialysis patients and CKD (chronic kidney disease) patients</p> <p>Children <16 yrs (from ward and clinic and GP)</p>

This document is designed for online viewing. Printed copies not distributed by the Quality Manager are deemed UNCONTROLLED. Photocopying of this document is prohibited to ensure that only the current version is in circulation.



Letterkenny University Hospital

Pathology Department

Prepared By Dr MM/JR

MP-MICRO-0025 Microbiology User Manual

Page 38 of 66

Revision 20

Sample	Specimen and container	Frequency of analysis	Turnaround time	Notes
Vancomycin assay	Serum	7 days 8am-8pm	24 hours	<p>Refer to "LUH Empiric Antibiotic Guidelines".</p> <p>Contact Dr M Mulhern, Cons. Microbiologist, if necessary.</p> <p>Test performed in Biochemistry Department. Consult Biochemistry User Manual for current reference ranges.</p>
Vancomycin resistant Enterococci (VRE)	Rectal swab in copan fecal swab collection device	7 days	3-5 days	<p>Insert swab about 2 cm into anal cavity, rotate and send specimen to laboratory.</p> <p>Screening for VRE includes:</p> <p>On admission, those patients known to be previously positive.</p> <p>Patients during an outbreak.</p> <p>Renal Dialysis Unit patients.</p> <p>Discharge Screening: there is no indication for routine discharge screening.</p> <p>Screening of staff: this is not routinely recommended.</p> <p>Screening of VRE carriers: There is presently no evidence to recommend obtaining swabs to determine clearance of VRE.</p>

This document is designed for online viewing. Printed copies not distributed by the Quality Manager are deemed UNCONTROLLED. Photocopying of this document is prohibited to ensure that only the current version is in circulation.



Letterkenny University Hospital

Pathology Department

Prepared By Dr MM/JR

**MP-MICRO-0025 Microbiology User
Manual**

Page 39 of 66

Revision 20

Sample	Specimen and container	Frequency of analysis	Turnaround time	Notes
Wound swab	Samples of pus, if present, are preferable to swabs. If insufficient pus or exudate is available, swab a representative part of the lesion. Sterile universal container or charcoal swab	7 days	2-3 working days	Routine processing of superficial swabs of ulcers must be discouraged. Swabbing dry crusted areas are unlikely to be helpful. If specimens are taken from ulcers the debris on the ulcer must be removed, the ulcer cleaned with saline, and either a biopsy, or preferably a needle aspiration of the edge of the wound taken. A less invasive irrigation-aspiration method may be preferred. Ulcers are often colonised by mixtures of aerobic and anaerobic organisms. Some of these organisms may be clinically significant if associated with cellulitis or systemic symptoms. The significance of the microbiological flora detected must be interpreted with care. When infections are complicated by the involvement of soft tissue and bone, isolates from superficial swabs taken from ulcers may correlate poorly with cultures of specimens taken by other means. Such specimens are biopsies and excised tissues, surgically obtained curettage, and aspirates from abscesses. Sampling by irrigation aspiration rather than biopsy has been recommended, and results correlate well with responses to clinical measures.

This document is designed for online viewing. Printed copies not distributed by the Quality Manager are deemed UNCONTROLLED. Photocopying of this document is prohibited to ensure that only the current version is in circulation.



5 APPROPRIATE REQUESTING OF SEROLOGY / VIROLOGY TESTS

Virus specific IgM tests may be done on a single specimen of serum for the diagnosis of acute infections for example Hepatitis A. IgM is usually positive 5 days post onset.

N.B. A general request for "Viral screen" will not be accepted unless sufficient clinical details are provided.

The following tables provide information relating to organisms that may be associated with various clinical presentations / situations. Further details on available tests for these organisms are presented in Section 7.

Acute Febrile Illness

Clinical Manifestation	Common organism	Less common
Acute Febrile Illness (dependant on travel and contact history)	Flaviviruses Arboviruses Hemorrhagic fever viruses	

Gastrointestinal disease

Clinical Manifestation	Common organism	Less common



Viral Gastroenteritis	Rotavirus and Norovirus	Astrovirus (children) Adenoviruses (types 40 & 41) – endemic diarrhoea and outbreaks Human calicviruses (Sapporo-like viruses), particularly in adults.
Hepatitis	Hepatitis viruses: Hepatitis A virus Hepatitis B virus Hepatitis C virus Cytomegalovirus Epstein-Barr (infectious mono-nucleosis)	Hepatitis E virus (rare in ROI without travel history) Hepatitis D virus Toxoplasma gondii (if immunosuppressed) Arboviruses Flaviviruses Parvovirus B19
Acute pancreatitis		Mumps virus (rare)
Parotitis	Mumps	Mumps Coxsackie A Parainfluenza 3 (rare)
Gingivostomatitis Mouth ulcers	Herpes simplex virus	

Cardiac disease

Clinical Manifestation	Common organism	Less common
------------------------	-----------------	-------------



Endocarditis		<i>Coxiella burnetii</i> (Q fever) Typhus (louse borne) Chlamydia species
Myocarditis Pericarditis	Influenza Enteroviruses Coxsackie B	Very rarely; parainfluenza viruses, adenovirus, cytomegalovirus, parvovirus B19, <i>Mycoplasma pneumoniae</i> , Coxsackie A ECHO, Mumps, Measles Varicella zoster virus Influenza
Myositis Myalgia	Coxsackie B (pleurodynia) Influenza Arboviruses Flaviviruses Enterovirus	Coxsackie A Echovirus Arbovirus

Newborn

Clinical Manifestation	Common organism	Less common
Congenital infection Small for date babies	Testing of new-borns with non-specific clinical features is unhelpful. If the baby has features of a specific congenital infection please, contact NRVL to discuss.	

Genitourinary disease

Clinical Manifestation	Common organism	Less common



Genital Chlamydia Vaginal discharge	<i>Chlamydia trachomatis</i> .	Numerous bacteria.
Haemorrhagic cystitis		Adenovirus (children and immunocompromised adults). BK virus (immunocompromised).
Ulcers and / or vesicles	Herpes simplex virus 1& 2.	Varicella zoster virus in cases of zoster – not usually chickenpox Coxsackie A Wart
Orchitis Epididymitis Ovaritis	Mumps	Mumps Coxsackie B Varicella
Wart like lesion	HPV Molluscum contagiosum	



Letterkenny University Hospital

Pathology Department

Prepared By Dr MM/JR

MP-MICRO-0025 Microbiology User
Manual

Page 44 of 66

Revision 20

Acute renal failure (including haemorrhagic fever with renal syndrome)		Hantaviruses
Haemolytic uraemic syndrome		No clear aetiology

Haematology disorders

Clinical Manifestation	Common organism	Less common
Thrombocytopenia and ITP	Epstein-Barr virus	Rubella virus (rare) Dengue Varicella zoster virus
Atypical lymphocytes	Epstein-Barr virus	Cytomegalovirus <i>Toxoplasma gondii</i> HIV
Henoch-Schonlein purpura		<i>Chlamydia pneumoniae</i> <i>Mycoplasma pneumoniae</i>

HIV/AIDS

Clinical Manifestation	Common organism	Less common
Making the initial diagnosis	HIV-1 HIV-2	HIV (N and O groups)

This document is designed for online viewing. Printed copies not distributed by the Quality Manager are deemed UNCONTROLLED. Photocopying of this document is prohibited to ensure that only the current version is in circulation.



Baseline and
Monitoring HIV viral load

Monitoring drug resistance
by genotypic methods

Joint disease

Clinical Manifestation	Common organism	Less common
Arthritis Arthralgia	Parovirus B19	Rubella virus <i>Chlamydia trachomatis</i> Mumps virus Alphavirus and flaviviruses

Neurological disease

Clinical Manifestation	Common organism	Less common
Aseptic meningitis Encephalitis Cerebellar signs	Enterovirus Mumps Herpes simplex 2 Herpes simplex virus Varicella zoster virus	<i>Mycoplasma pneumonia</i> , Epstein-barr virus, Cytomegalovirus Arboviruses, Flavivirus, Influenza, Toxoplasma, HIV <i>Borrelia burgdorferi</i> (Lyme disease), Adenovirus, JC (in HIV infected patients), Rabies
Febrile convulsions	Any viral infection that causes fever. HHV-6 is common cause in children	



Gullain Barre Syndrome Acute transverse myelitis	Cytomegalovirus	Epstein-Barr virus Varicella zoster virus <i>Borrelia burgdorferi</i> (Lyme disease)
Facial numbness/tingling	Varicella zoster virus	
Paraesthesia demyelination Peripheral neuropathy Multiple sclerosis	There is no clear diagnosable viral aetiology	Varicella zoster virus Measles Enterovirus Arbovirus Flavivirus HTLV I and II

6.10 Ocular disease

Clinical Manifestation	Common organism	Less common
Conjunctivitis, keratitis	Herpes simplex virus Varicella zoster virus Adenovirus Chlamydia trachomatis Measles (prodrome) Rubella (prodrome)	Enterovirus 70 and Coxsackie Z24 (haemorrhagic conjunctivitis) Influenza Newcastle disease
Corneal Infection	Herpes simplex virus Varicella zoster virus	Respiratory syncytial virus Rhinovirus Influenza A & B viruses (tracheobronchitis)
Retinitis	Cytomegalovirus (AIDS)	<i>Toxoplasma gondii</i> (immunosuppressed)



Blepharitis	Herpes simplex Wart (papilloma) Molluscum	
Sensorineural hearing loss	Mumps Measles Varicella-zoster Influenza Enterovirus Herpes simplex	Adenovirus Rubella (congenital) Cytomegalovirus (congenital)

6.11 Pregnancy

Clinical Manifestation	Common organism	Less common
Maculopapular Rash	Measles Parvovirus B19 HHV-6 in young children Rubella	
Vesicular Rash	Varicella-zoster virus (Chickenpox or zoster) Herpes simplex virus	Enteroviruses (hand and foot and mouth disease)
Foetal hydrops	Parvovirus B19	
Abortions, still births, intra-uterine growth retardation	Please contact NVRL if you wish to discuss a specific case	



6.12 Rash

Clinical Manifestation	Common organism	Less common
Maculopapular (Rubelliform) rash	Measles Rubella ECHO Coxsackie	Epstein-Barr (infectious mono-nucleosis) Arboviruses Adenoviruses
Vesicular rash	Herpes simplex virus Varicella zoster virus Wart (papilloma virus) Molluscum contagiosum	
Haemorrhagic rash	Arboviruses	



Localised lesion	Herpes simplex virus Varicella zoster virus Wart (papilloma virus) Molluscum contagiosum	
------------------	---	--

6.13 Respiratory tract infections

Clinical Manifestation	Common organism	Less common
Pneumonia	Mycoplasma pneumoniae Chlamydia pneumoniae Influenza virus	Legionella pneumophila Chlamydia psittaci Coxiella burnetii (Q-fever) Varicella zoster virus Respiratory syncytial virus (infants and the elderly) Chlamydia trachomatis (neonates) Cytomegalovirus and pneumocystis carini (in immunocompromised) Human metapneumovirus Measles virus SARS CoV SARS-CoV-2
Laryngotracheobronchitis (croup)	Parainfluenza virus	Respiratory syncytial virus Rhinovirus Influenza A & B viruses (tracheobronchitis)



Bronchiolitis (infants)	Respiratory syncytial virus Human Metapneumovirus	Parainfluenza 1, 2 & 3 Adenovirus Rhinovirus
Coryza (common cold)	Parainfluenza virus Coronavirus Rhinovirus	
Acute exacerbation of COPD/COAD and asthma	Any of the above	
Pharyngitis	Epstein-Barr virus	Adenovirus Influenza virus Chlamydia pneumoniae Enteroviruses (hand, foot & mouth disease)

6.14 Systemic illness

Clinical Manifestation	Common organism	Less common
Lymphadenopathy	Epstein-Barr virus Cytomegalovirus	<i>Toxoplasma gondii</i> HIV
Pyrexia	Influenza Epstein-Barr virus Cytomegalovirus Parvovirus B19 HHV6	<i>Coxiella burnetii</i> Arbovirus Flaviviruses



Letterkenny University Hospital

Pathology Department

Prepared By Dr MM/JR

**MP-MICRO-0025 Microbiology User
Manual**

Page 51 of 66

Revision 20

Non-specific symptoms
(malaise, fatigue,
lethargy,
tiredness, generalised
aches, weight loss, night
sweats, myalgia/myositis)

Influenza but only if
preceded by "flu-like
illness"
Epstein-Barr virus
Cytomegalovirus
Toxoplasma gondii
HIV

Parainfluenza 1,2 & 3
Adenovirus
Rhinovirus



6 SAMPLE REQUIREMENTS FOR MOLECULAR / SEROLOGY / VIROLOGY TESTS

Virus specific IgM tests may be performed on serum for the diagnosis of acute infections. IgM is usually positive 5 days post onset.

Infectious serology, immunoassay and molecular testing performed in LUH

TEST	SAMPLE	TURNAROUND TIME	FREQUENCY OF TESTING	TESTING LABORATORY	NOTES
Adenovirus antigen test	Faeces	2-3 working days	7 days Daily	Microbiology	Performed on children aged <5 years old.
Biofire Blood Culture Identification Panel (molecular)	Positive blood culture	4 hours from flagged positive blood culture	24/7	Microbiology	
Biofire Meningitis/ Encephalitis Panel (molecular)	CSF	4 hours	24/7	Microbiology	Performed on CSF samples with raised WCC only (see section 8). E. coli K1, H. influenzae, L. monocytogenes, N. meningitis, S. agalactiae, S. pneumonia, CMV, Enterovirus, HSV1/2, HHV-6, Parechovirus, VZV, Cryptococcus neoformans/gattii



Letterkenny University Hospital

Pathology Department

Prepared By Dr MM/JR

MP-MICRO-0025 Microbiology User
Manual

Page 53 of 66

Revision 20

TEST	SAMPLE	TURNAROUND TIME	FREQUENCY OF TESTING	TESTING LABORATORY	NOTES
Biofire Respiratory Panel	Naso/Oro- pharyngeal Primestore MTM swab	24 hours	Monday-Friday	Microbiology	Adenovirus, Coronavirus 229E,HKU1, NL63 and OC43, MERS-CoV, Human Metapneumo virus, Rhino/Enterovirus, Influenza A/B, Parainfluenza 1,2,3,4, RSV, B. paraptussis, B. pertussis, Chlamydia pneumonia, Mycoplasma pneumonia. Please note SARS-CoV-2 are not reported from this assay. Please send separate form and sample if required.
Clostridoides difficile antigen test	Faeces	24-48 hours	Monday-Friday	Microbiology	<p>The Clinical Microbiology laboratory currently tests for GDH to detect C difficile in stool samples. Positive GDH specimens are tested for Clostridium difficile (C. diff) toxin A and B. GDH positive and C diff toxin negative specimens are further tested by a molecular assay. Test may be repeated once if the initial test is negative and C. difficile is strongly suspected.</p> <p>Positive patients should not be rescreened within 14 days of a positive result.</p> <p>Test may only be carried out on those 2 years of age and over. Infection control will be notified of a positive result.</p>

This document is designed for online viewing. Printed copies not distributed by the Quality Manager are deemed UNCONTROLLED. Photocopying of this document is prohibited to ensure that only the current version is in circulation.



TEST	SAMPLE	TURNAROUND TIME	FREQUENCY OF TESTING	TESTING LABORATORY	NOTES
Clostridoides difficile (Confirmatory PCR)	Faeces	24-48 hours	Monday-Friday	Microbiology	Only performed when GDH antigen positive and Toxin antigen negative.
Carbapenemas e Producing Enterobacterale s (CPE) PCR	Rectal swab (Copan Fecal Swab)	24-48 hours	Monday-Friday	Microbiology	See section 4 above for testing criteria and guidelines.
Helicobacter pylori antigen test	Faeces	24-48 hours	Monday-Friday	Immunology	
Hepatitis serology Hep A IgM, HBsAg, Anti-HCV), Hep B antibody (AHB)	Serum	24 hours	Monday-Friday	Biochemistry	Confirmatory testing and further investigations performed at NVRL
HIV serology	Serum	24 hours	Monday-Friday	Biochemistry	Confirmatory testing and further investigations performed at NVRL
Legionella Urinary Antigen	Urine	24 hours	7 days	Microbiology	



TEST	SAMPLE	TURNAROUND TIME	FREQUENCY OF TESTING	TESTING LABORATORY	NOTES
Norovirus PCR	Faeces	24-48 hours	Monday-Friday	Immunology	Specimens received for Norovirus testing will be rejected unless the clinical teams have discussed them with the Infection Prevention and Control Team.
Pneumococcal Urinary Antigen	Urine	24 hours	7 days	Microbiology	
Rotavirus antigen test	Faeces	2-3 working days	7 days	Microbiology	Performed on children aged <5 years old.
RSV antigen	NPA	24 hours	7 days	Microbiology	Negative specimens referred to NVRL for extended respiratory virus screen.
SARS-CoV-2 PCR	Naso/Oropharyngeal Primestore MTM swab	24 hours	Batch test: Monday to Friday Rapid test: 24/7	Microbiology	
SARS-CoV-2, Influenza A/B, RSV screen	Naso/Oropharyngeal Primestore MTM swab	24 hours	24/7	Microbiology	Relevant clinical details required on request form in order for testing.
Syphilis serology (T. pallidum)	Serum	24 hours	Monday-Friday	Biochemistry, LUH	Confirmatory testing and further investigations performed at NVRL

**MICROBIOLOGY TESTS REFERRED TO EXTERNAL LABORATORIES**

Turnaround times are based on those stated by each referral laboratory and do not take into consideration sample transport times or time taken to receive hard copy reports

TEST	SAMPLE	TURNAROUND TIME	TESTING LABORATORY	NOTES				
Teicoplanin assay	Serum	7 days	Antimicrobial Reference Laboratory, Bristol	<p>The monitoring of teicoplanin levels is only recommended for patients with impaired renal function, patients receiving prolonged treatment at high doses and patients receiving other drugs with nephrotoxic potential.</p> <p>Please discuss with Consultant Microbiologist.</p> <table><tr><td>Expected Level (Guidelines) mg/L</td><td>Re-Assay Interval (Days)</td></tr><tr><td>Trough 20 – 60 mg/L</td><td>3 -5</td></tr></table>	Expected Level (Guidelines) mg/L	Re-Assay Interval (Days)	Trough 20 – 60 mg/L	3 -5
Expected Level (Guidelines) mg/L	Re-Assay Interval (Days)							
Trough 20 – 60 mg/L	3 -5							
Faecal ova, cysts & parasites	Faeces	5 days	Eurofins Biomnis	https://www.eurofins.ie/biomnis/test-information/test-guide/				
Fungal culture and microscopy	Nail clippings, skin scrapings in sterile universal container or	3-4 weeks	Microbiology, St James's Hospital, Dublin	http://search.stjames.ie/Labmed/				



Letterkenny University Hospital

Pathology Department

Prepared By Dr MM/JR

MP-MICRO-0025 Microbiology User Manual

Page 57 of 66

Revision 20

TEST	SAMPLE	TURNAROUND TIME	TESTING LABORATORY	NOTES
	Mycotrans device			
Crystal analysis	Joint fluid in sterile universal	5 days	Cytology Dept, Beaumont Hospital, Dublin	
Tuberculosis (TB) culture	Respiratory specimens	Microscopy: 1 day Culture: 6-7 weeks	Microbiology Dept, Galway University Hospital	Urine is not suitable for TB culture https://www.saolta.ie/documents/guh-laboratory-medicine-user-guide-version-312
Quantiferon Gold TB (latent TB)	Specialised blood tubes.	Mater: 3 weeks Biomnis: 3 days	Mater Hospital Dublin Eurofins Biomnis (OH samples only)	Contact Microbiology to obtain correct tubes and request form. https://www.eurofins.ie/biomnis/test-information/test-guide/
Bacterial PCR (S. pneumoniae, H. influenzae, E. coli K1, N. meningitidis)	0.5ml CSF, 0.5-1ml EDTA blood	1-2 days	IMSRL, Temple St Children's Hospital, Dublin	https://www.cuh.ie/healthcare-professionals/departments/laboratory/ Samples should be collected as close to onset as possible and prior to administration of antibiotics. Store samples at 4°C if delay in transportation
Strongyloides serology	Serum	8 days	Hospital for Tropical Diseases, London	http://www.thehtd.org/parasitology.aspx
Toxocara serology	Serum	8 days	Hospital for Tropical Diseases, London	http://www.thehtd.org/parasitology.aspx
Filaria serology	Serum	8 days	Hospital for Tropical Diseases, London	http://www.thehtd.org/parasitology.aspx
Schistosoma serology	Serum	8 days	Hospital for Tropical Diseases, London	http://www.thehtd.org/parasitology.aspx
Hydatid serology	Serum	8 days	Hospital for Tropical Diseases, London	http://www.thehtd.org/parasitology.aspx

This document is designed for online viewing. Printed copies not distributed by the Quality Manager are deemed UNCONTROLLED. Photocopying of this document is prohibited to ensure that only the current version is in circulation.



TEST	SAMPLE	TURNAROUND TIME	TESTING LABORATORY	NOTES
Galactomannin antigen EIA	Serum, BAL, Tracheal aspirates	7 days	Microbiology, St James's Hospital, Dublin.	http://search.stjames.ie/Labmed/
Cryptococcal antigen	Serum, CSF	7 days	Microbiology, St James's Hospital, Dublin.	http://search.stjames.ie/Labmed/
Helicobacter pylori culture	Gastric biopsy in sterile saline	19 days	Gastrointestinal Bacteria Reference Unit, UKHSA	https://www.gov.uk/government/publications/bacteriology-reference-department-brd-user-manual
Coxiella Burnetii (Q fever)	Serum	3 days	Eurofins Biomnis	https://www.eurofins.ie/biomnis/test-information/test-guide/
Rickettsia	Serum	5 days	Rare and Imported Pathogens Laboratory, UK HSA	https://www.gov.uk/government/publications/rare-and-imported-pathogens-laboratory-ripl-user-manual Tests selected by RIPL based on clinical details.
Pneumococcal antibodies	Serum	28 days	Manchester Medical Microbiology Partnership	https://mft.nhs.uk/the-trust/other-departments/laboratory-medicine/manchester-medical-microbiology-partnership/
Meningococcal antibodies	Serum	28 days	Manchester Medical Microbiology Partnership	https://mft.nhs.uk/the-trust/other-departments/laboratory-medicine/manchester-medical-microbiology-partnership/
H. influenza antibodies	Serum	28 days	Manchester Medical Microbiology Partnership	https://mft.nhs.uk/the-trust/other-departments/laboratory-medicine/manchester-medical-microbiology-partnership/



Letterkenny University Hospital

Pathology Department

Prepared By Dr MM/JR

MP-MICRO-0025 Microbiology User Manual

Page 59 of 66

Revision 20

TEST	SAMPLE	TURNAROUND TIME	TESTING LABORATORY	NOTES
Tetanus antibodies	Serum	28 days	Manchester Medical Microbiology Partnership	https://mft.nhs.uk/the-trust/other-departments/laboratory-medicine/manchester-medical-microbiology-partnership/
Diphtheria antibodies	Serum	28 days	Manchester Medical Microbiology Partnership	https://mft.nhs.uk/the-trust/other-departments/laboratory-medicine/manchester-medical-microbiology-partnership/
Legionella pneumophila PCR (from urinary antigen positive patients only)	BAL, Sputa, Tracheal aspirate		Respiratory and vaccine preventable bacteria Reference Unit, UKHSA	https://www.gov.uk/government/publications/bacteriology-reference-department-brd-user-manual
Bordetella pertussis Serology – anti-PT IgG antibodies (not suitable for immune status)	Serum	12 days	Respiratory and vaccine preventable bacteria Reference Unit, UKHSA	https://www.gov.uk/government/publications/bacteriology-reference-department-brd-user-manual
Chlamydia psittaci	Serum	5 days	Eurofins Biomnis	https://www.eurofins.ie/biomnis/test-information/test-guide/
Mycoplasma pneumonia >20 (YO)	Serum	4 days	>20 years old – Eurofins Biomnis	https://www.eurofins.ie/biomnis/test-information/test-guide/

This document is designed for online viewing. Printed copies not distributed by the Quality Manager are deemed UNCONTROLLED. Photocopying of this document is prohibited to ensure that only the current version is in circulation.



TEST	SAMPLE	TURNAROUND TIME	TESTING LABORATORY	NOTES
BK polyomavirus (PCR)	Serum/Urine	5 days	National Virus Reference Laboratory, Dublin	https://nvrl.ucd.ie/usermanual
Borrelia burgdorferii serology	Serum	5 days	National Virus Reference Laboratory, Dublin	https://nvrl.ucd.ie/usermanual
Chlamydia pneumoniae PCR	Lower respiratory tract sample	3-5 days	National Virus Reference Laboratory, Dublin	https://nvrl.ucd.ie/usermanual
Chlamydia trachomatis PCR	Aptima swab/Urine	5 days	National Virus Reference Laboratory, Dublin	https://nvrl.ucd.ie/usermanual
Cytomegalovirus (CMV) Serology/PCR	Serology: Serum PCR: EDTA blood, BAL, post mortem, urine, dried blood spot	Serology: 7 days PCR: 5 days Dried blood spots: 4-6 weeks	National Virus Reference Laboratory, Dublin	https://nvrl.ucd.ie/usermanual
Enterovirus PCR	CSF, Stool, Swab	CSF: 3 days Other: 5 days	National Virus Reference Laboratory, Dublin	https://nvrl.ucd.ie/usermanual
Epstein Barr Virus Serology/PCR	Serology: Serum PCR: EDTA blood	Serology: 3 days PCR: 5 days	National Virus Reference Laboratory, Dublin	https://nvrl.ucd.ie/usermanual
Hepatitis A, B, C, D, E	Serum		National Virus Reference Laboratory, Dublin	https://nvrl.ucd.ie/usermanual Referred from Biochemistry Department. Consult Biochemistry User Manual for details.



TEST	SAMPLE	TURNAROUND TIME	TESTING LABORATORY	NOTES
confirmatory testing				
Herpes Simplex Virus (Type 1 and 2) Serology/PCR	Serology: Serum PCR: Swab, CSF, BAL	Serology: 7 days CSF PCR: 3 days PCR (other): 5 days	National Virus Reference Laboratory, Dublin	https://nvrl.ucd.ie/usermanual
Human Herpesvirus 6 PCR	Serum	3 days	National Virus Reference Laboratory, Dublin	https://nvrl.ucd.ie/usermanual
HIV Serology/PCR	Serology: serum PCR: EDTA blood (plasma)	Serology: 7 days PCR: 7 days	National Virus Reference Laboratory, Dublin	https://nvrl.ucd.ie/usermanual
Human Metapneumovirus PCR	Resp NPA	3-5 days	National Virus Reference Laboratory, Dublin	https://nvrl.ucd.ie/usermanual
Human T cell Lymphotropic Virus (HTLV) serology	Serum	3-7 days	National Virus Reference Laboratory, Dublin	https://nvrl.ucd.ie/usermanual
Influenza virus A/B PCR	Respiratory sample	3-5 days	National Virus Reference Laboratory, Dublin	https://nvrl.ucd.ie/usermanual
JC Polyomavirus PCR	CSF, Blood, Serum, Urine	7 days	National Virus Reference Laboratory, Dublin	https://nvrl.ucd.ie/usermanual



TEST	SAMPLE	TURNAROUND TIME	TESTING LABORATORY	NOTES
Leptospira interrogans serology	Serum	4-14 days	National Virus Reference Laboratory, Dublin	https://nvrl.ucd.ie/usermanual
Measles virus serology/PCR	Serology: Serum PCR: Oral fluid, Urine, swabs, CSF	Serology: 4-7 days PCR: 7 days	National Virus Reference Laboratory, Dublin	https://nvrl.ucd.ie/usermanual
Monkeypox (MPOX) PCR	Skin swab, vesicle fluid, throat swab Swabs are available from Microbiology.	3 days	National Virus Reference Laboratory, Dublin	https://nvrl.ucd.ie/usermanual Contact Consultant Microbiologist and Medical Scientist in Microbiology prior to sending samples.
Mumps virus serology/PCR	Serology: Serum PCR: Oral fluid, throat swab, CSF	Serology: 5-7 days PCR: 7 days	National Virus Reference Laboratory, Dublin	https://nvrl.ucd.ie/usermanual
Mycoplasma genitalium PCR	Urine, anogenital swab (Aptima collection device)	5 days	National Virus Reference Laboratory, Dublin	https://nvrl.ucd.ie/usermanual
Mycoplasma pneumoniae serology (<20 YO)/PCR	Serology: serum PCR: respiratory sample	Serology: 7 days PCR: 3-5 days	National Virus Reference Laboratory, Dublin	https://nvrl.ucd.ie/usermanual



Letterkenny University Hospital

Pathology Department

Prepared By Dr MM/JR

MP-MICRO-0025 Microbiology User Manual

Page 63 of 66

Revision 20

TEST	SAMPLE	TURNAROUND TIME	TESTING LABORATORY	NOTES
Neisseria gonorrhoea PCR	Aptima swab/Urine	5 days	National Virus Reference Laboratory, Dublin	https://nvrl.ucd.ie/usermanual
Parainfluenza virus 1,2,3 PCR	Respiratory sample	3-5 days	National Virus Reference Laboratory, Dublin	https://nvrl.ucd.ie/usermanual
Parechovirus PCR	Respiratory, stool, CSF, swabs	CSF: 3 days Other: 5 days	National Virus Reference Laboratory, Dublin	https://nvrl.ucd.ie/usermanual
Parvovirus B19 serology/PCR	Serology: Serum PCR: Amniotic fluid, EDTA blood (plasma)	Serology: 3 days PCR: 5 days	National Virus Reference Laboratory, Dublin	https://nvrl.ucd.ie/usermanual
Pneumocystis jirovecii (PJP) PCR	BAL, Sputum	5 days	National Virus Reference Laboratory, Dublin	https://nvrl.ucd.ie/usermanual
Respiratory syncytial virus (RSV) PCR	Respiratory, throat swab	3-5 days	National Virus Reference Laboratory, Dublin	https://nvrl.ucd.ie/usermanual
Rubella virus serology	Serum, oral fluid	3-7 days	National Virus Reference Laboratory, Dublin	https://nvrl.ucd.ie/usermanual
SARS-CoV-2 PCR/serology	Serology: Serum Only available by prior arrangement	Serology: 7 days PCR: 3 days	National Virus Reference Laboratory, Dublin	https://nvrl.ucd.ie/usermanual

This document is designed for online viewing. Printed copies not distributed by the Quality Manager are deemed UNCONTROLLED. Photocopying of this document is prohibited to ensure that only the current version is in circulation.



TEST	SAMPLE	TURNAROUND TIME	TESTING LABORATORY	NOTES
	PCR: Combined nasal/throat swab, BAL, Sputum			
Syphilis (Treponema pallidum) serology	Serum	3-7 days	National Virus Reference Laboratory, Dublin	https://nvrl.ucd.ie/usermanual
Toxoplasma gondii serology	Serum	3 days	National Virus Reference Laboratory, Dublin	https://nvrl.ucd.ie/usermanual
Trichomonas vaginalis PCR	Aptima swab	5 days	National Virus Reference Laboratory, Dublin	https://nvrl.ucd.ie/usermanual
Varicella Zoster Virus Serology/PCR	Serology: Serum PCR: CSF, swabs, vesicular fluid	Serology: 3-7 days CSF PCR: 3 days Other PCR: 5 days	National Virus Reference Laboratory, Dublin	https://nvrl.ucd.ie/usermanual



7 EUCAST

The Microbiology Department in LUH follow EUCAST (European Committee on Antimicrobial Susceptibility Testing) guidelines for antimicrobial susceptibility testing. EUCAST has recently changed the definitions of susceptibility testing categories S, I and R.

- S - Susceptible, standard dosing regimen: A microorganism is categorised as "Susceptible, standard dosing regimen", when there is a high likelihood of therapeutic success using a standard dosing regimen of the agent.
- I - Susceptible, increased exposure*: A microorganism is categorised as "Susceptible, Increased exposure*" when there is a high likelihood of therapeutic success because exposure to the agent is increased by adjusting the dosing regimen or by its concentration at the site of infection.
- R - Resistant: A microorganism is categorised as "Resistant" when there is a high likelihood of therapeutic failure even when there is increased exposure.

*Exposure is a function of how the mode of administration, dose, dosing interval, infusion time, as well as distribution and excretion of the antimicrobial agent will influence the infecting organism at the site of infection.

8 NORMAL CSF VALUES

As per UK Standards for Microbiology Investigations, Public Health England (Investigation of Cerebrospinal Fluid B27 Issue No:6.1)

Leucocytes	Neonates: <1 month	0 - 30 cells / μ L
	Infants: 1 - 12 months	0 - 15 cells / μ L
	Children/Adults: >1 year	0 - 5 cells / μ L
Erythrocytes	No RBCs should be present in normal CSF	
Protein	Neonates: <1 month	0.65 – 1.5 g/L
	Infants: 1 - 2 months	0.5 – 0.9 g/L
	Children: 2 months-18 years	0.05 – 0.35 g/L
	Adults: 18 – 60 years	0.15 – 0.45 g/L
	Adults: >60 years	0.15 – 0.6 g/L
Glucose	Neonates: <1 month	1.94 – 5.55 mmol/L
	Infants: 1 – 2 months	1.55 – 5.55 mmol/L
	Infants: 2 – 12 months	1.94 – 5.0 mmol/L
	Children/Adults: >1 year	2.22 – 4.44 mmol/L

These values represent the approximate upper and lower limits of normality and are for guidance only.

This document is designed for online viewing. Printed copies not distributed by the Quality Manager are deemed UNCONTROLLED. Photocopying of this document is prohibited to ensure that only the current version is in circulation.



9 SEMEN ANALYSIS PROTOCOL (MF-0041)

PROTOCOL FOR SEMEN ANALYSIS AT LETTERKENNY UNIVERSITY HOSPITAL.

All G.P.'s and Gynaecologists are requested to conform to the following WHO guidelines:

1. All semen analyses will be carried out strictly by appointment only. Patients should be informed to make an appointment with the Microbiology Laboratory to bring / send semen samples (07491-23610).
2. The sample should be collected after a 2-7 day period of abstinence from sexual activity.
3. The entire sample should be collected into the container provided. (If any portion of the ejaculate is not collected, or if the container leaks during transport, the sample should not be used for analysis.)

Please Note that there are NO facilities for specimen collection in the laboratory

4. Condoms must not be used as a means of collection. (They may interfere with the viability of the spermatozoa.)
5. Coitus Interruptus is not acceptable as a means of collection. (It is likely that there will be a loss of the first portion of the ejaculate, which contains the highest concentration of spermatozoa.)
6. The form and container should be labelled with:
 1. The Name of the Male partner (NOT the female partner)
 2. The Date of Birth of the Male partner
 3. The Hospital Number of the Male partner
 4. Date and Time of sample collection.
7. The laboratory request form must state all additional required and relevant details.

INFERTILITY SAMPLES

8. The sample should be protected from extremes of temperature- keep the sample close to the body during transport.
9. The sample should be delivered to the Laboratory within 1 hour of its collection. Samples received after 1 hour of collection will be analysed but delay may adversely affect results

POST VASECTOMY SAMPLES

8. The sample should be delivered to the Laboratory within 4 hours of its collection.

This document is designed for online viewing. Printed copies not distributed by the Quality Manager are deemed UNCONTROLLED. Photocopying of this document is prohibited to ensure that only the current version is in circulation.