

Beaumont Hospital

Designated Cancer Centre Dublin North East

Rapid Access Lung Clinic

A Guide for Patients

Contents

Why has my doctor sent me to the Rapid Access Lung Clinic? (Lung Clinic)	2
What happens at the Lung Clinic?	2
What your lungs do?	3
How long will I be at the Lung Clinic?	4
Should I bring a relative or friend to the Lung Clinic?	4
What should I bring to the Lung Clinic?	4
What happens when I arrive at the Lung Clinic?	4
What tests might I have?	5
When will I get my test results?	9
What can I do to improve my health?	10
Have you thought about quitting smoking?	11
Where will I find the Lung Clinic?	12
What if I have questions about my appointment?	17
Can I speak with a lung nurse?	17
What if I don't speak English?	17
Beaumont hospital patient booklet	17
Is there a coffee shop in the hospital?	18
Is there a bakery in the hospital?	18
Is there a shop in the hospital?	18
Bank and cash machine	18
Key contacts	19
Your Service, Your Say	19
Do you have questions to ask your doctor?	20

Why has my doctor sent me to the Rapid Access Lung Clinic? (Lung Clinic)

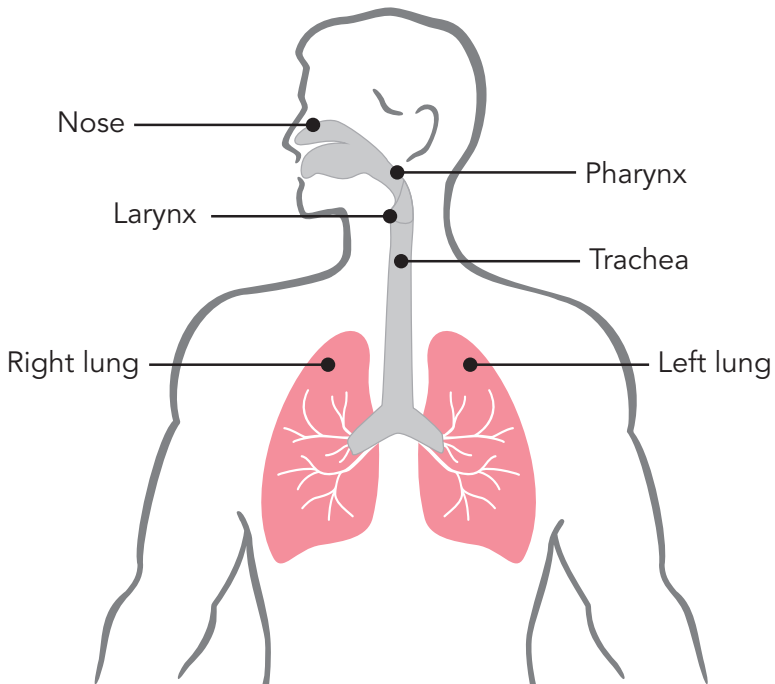
Your family doctor (GP) has sent you to the Lung Clinic because they are concerned about your symptoms or your chest x-ray. Your family doctor wants you to see a specialist lung doctor.

What happens at the Lung Clinic?

- The Lung Clinic has specialist staff and equipment so it can see patients and arrange tests quickly.
- You will usually get an appointment within 2 weeks.
- At the clinic, the doctor will ask you about your symptoms, examine you and decide what tests you may need.
- The lung nurse will help organise your tests and answer any questions you may have about the tests. You can talk with the nurse at the clinic or by phone.

What your lungs do?

1. You breathe in air through your nose and mouth.
2. This air travels to your lungs through your windpipe.
3. Your windpipe is made up of three parts:
 - the pharynx (back of your throat);
 - the larynx (your voicebox); and
 - the trachea.
4. Your lungs are located in your chest. You have two lungs, one on the left and one on the right.



How long will I be at the Lung Clinic?

If you need a lot of tests, your visit to the lung clinic might take a half day. It is important that you arrive on time for your appointment. Don't arrive too early though as you won't be seen before your appointment time.

Should I bring a relative or friend to the Lung Clinic?

Yes, you can bring a relative or friend to the Lung Clinic. But please do not bring children with you. If you must bring a child, please bring a friend or relative to mind the child while you are with the doctor.

What should I bring to the Lung Clinic?

Please bring any medication you are taking.

What happens when I arrive at the Lung Clinic?

The receptionist will ask for your name, address, phone number, date of birth, next of kin and the name of your family doctor (GP). You will then see a doctor from the lung team.

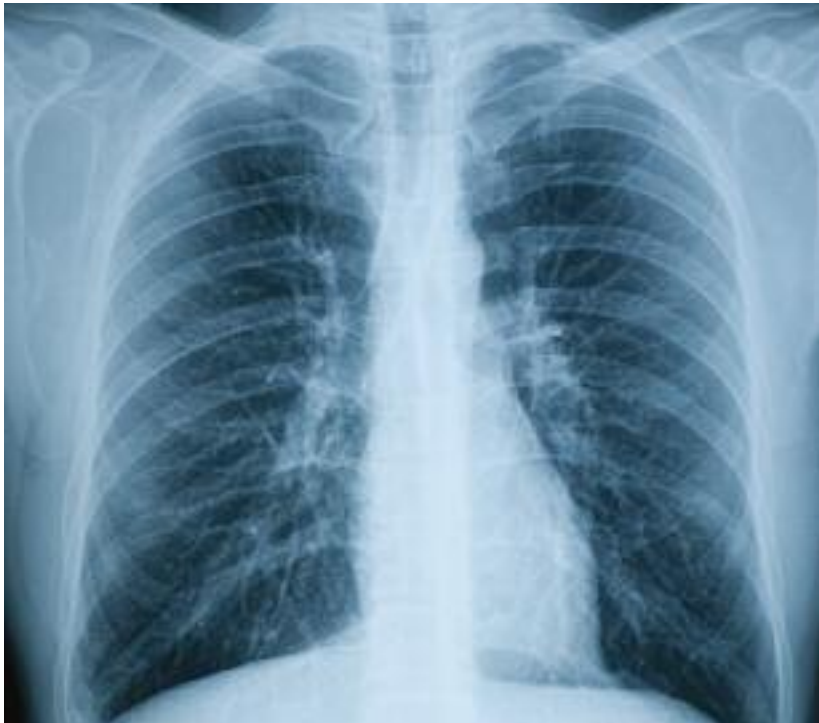
What tests might I have?

The lung doctor will ask you about your symptoms and will then examine you. After this examination, the doctor may decide you need some tests such as:

Here is a brief description of the tests you might have.

Chest x-ray

A chest x-ray takes a picture of your lungs. If your chest x-ray does not look normal, your doctor may arrange more tests.



Pulmonary function tests (PFTs)

These are breathing tests to check how well your lungs work. You blow into a mouthpiece on a machine. These tests are not painful. They take about 20 minutes.



CT scan

CT stands for computerised tomography. It is a test which gives a detailed picture of the inside of your body. You will be asked to lie on a table. The table will then pass through the CT scanner. The CT scanner takes x-rays which build up a picture of the inside of your body. Your local x-ray department will tell you more about having a CT scan.



Bronchoscopy

During this test, your doctor can look inside your lungs using a tube with a tiny camera and light attached. You will be given sedation for this test. The sedation will relax you and make you feel sleepy. A biopsy is often done at the same time. If you are having a bronchoscopy, the doctor or nurse will give you more information.

Endobronchial ultrasound (EBUS)

This is a type of bronchoscopy. If you are having an EBUS, the doctor or nurse will tell you more about it.

CT guided lung biopsy

A CT guided lung biopsy takes a tiny sample of your lung which is then sent to the lab for testing. This is done under local anaesthetic. If you are having a CT guided lung biopsy, the doctor or nurse will give you more information.

When will I get my test results?

Test results are usually available within one month after attending the lung clinic. We will contact you and ask you to come back to the clinic for your results. Please bring a relative or friend with you.

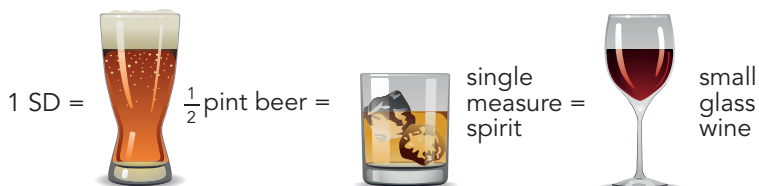
	Date	Time
• blood tests	_____	_____
• chest X-ray (if not already done)	_____	_____
• pulmonary function tests (PFTs)	_____	_____
• CT scan	_____	_____
• bronchoscopy	_____	_____
• EBUS	_____	_____
• CT guided lung biopsy	_____	_____

You may not need all these tests. Some of these tests may be done on the day of your visit. Other tests might be done on another day. **You can record the date and time of each test in the space above.**

What can I do to improve my health?

There are lots of things you can do.

- Stop smoking and avoid other peoples' smoke.
- Eat a healthy diet. This includes eating five portions of fruit or vegetables a day.
- Make sure you stay a healthy weight.
- Exercise for at least 30 minutes a day.
- Cover up in the sun and never use a sun-bed.
- Drink alcohol sensibly:
 - no more than 17 standard drinks (SD) for men a week;
 - no more than 11 standard drinks for women a week.



Have you thought about quitting smoking?

Smoking is a major risk factor for the following:

- cancer;
- heart disease;
- stroke or
- bronchitis and emphysema (also known as COPD – chronic obstructive pulmonary disease).

If you are a smoker, it is never too late to quit. The more often you try to quit, the more likely you are to stop. The trick is to keep trying!

There are many benefits to quitting smoking.

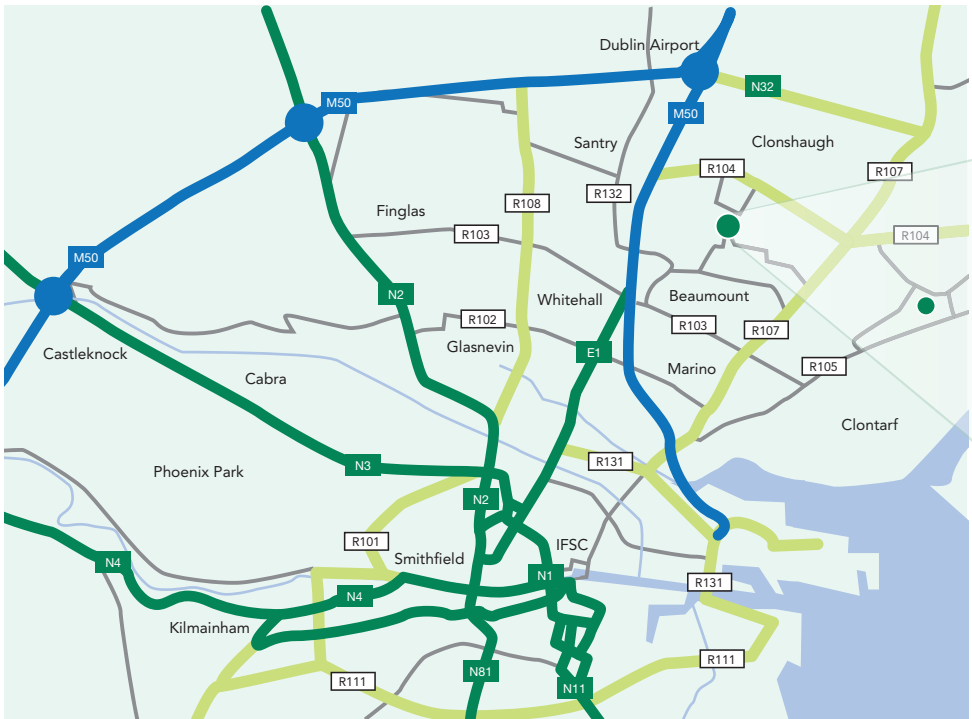
- You will be healthier.
- Your medical treatments will work better.
- You will be a good role model for your family and friends.
- You will have more money in your pocket.

There is a lot of support to help you stop smoking. If you would like advice or support on quitting, talk to your family doctor (GP). You can also call the Quit Team on Freephone 1800 201 203. They can put you in touch with the smoking cessation officer in your area. You might find the Quit Campaign website useful, please go to www.quit.ie.

Where will I find the Lung Clinic?

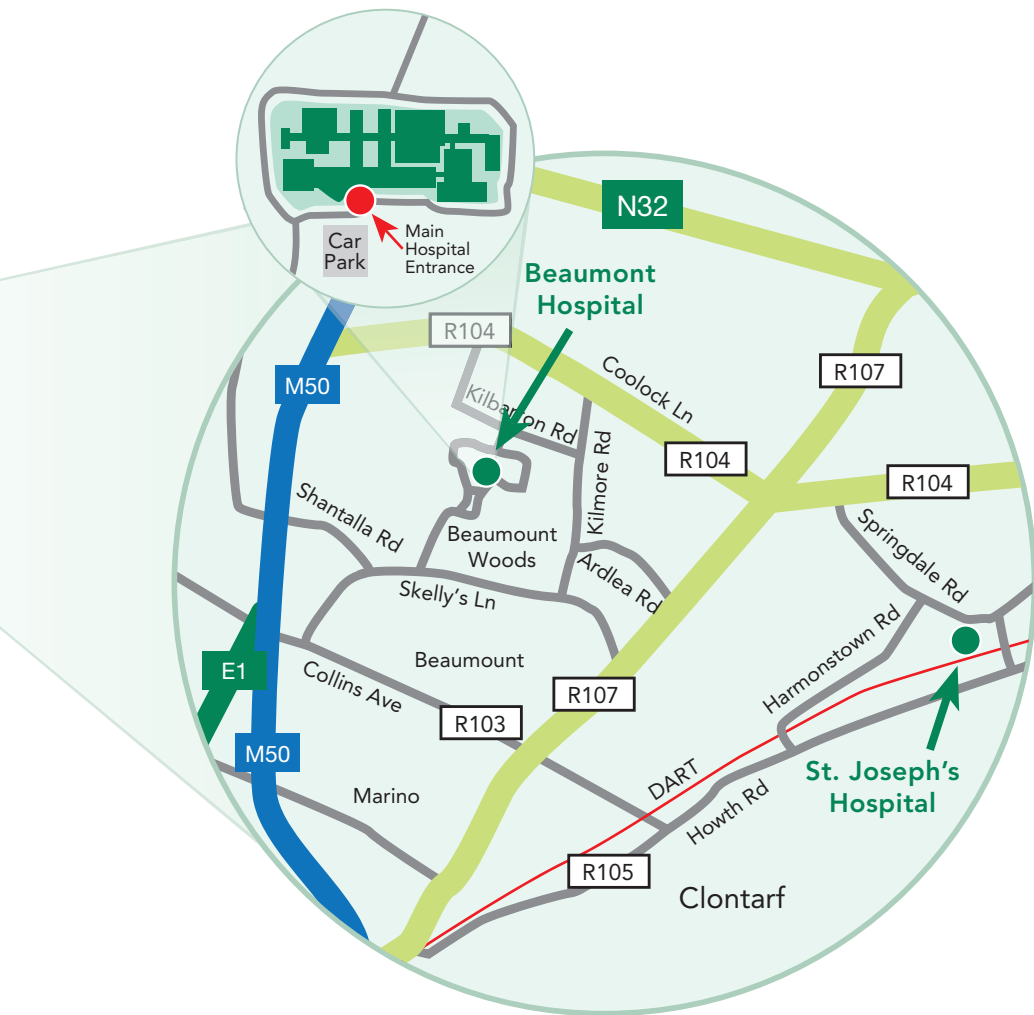
The lung clinic is located in Clinic B in the outpatient department. Please go to main reception for directions.

Beaumont Hospital is in the northeast of Dublin, close to the M50 and Dublin Airport. It is located off Beaumont Road, in Beaumont, Dublin 9.



GPS: N 53 23.4334 W 6 13.349

Some tests may take place in St Joseph's Hospital, Springdale Road, Raheny, Dublin 5. St. Joseph's Hospital is a 15 minute walk from Raheny Dart Station.



How do I get to Beaumont Hospital?

Bus

The following buses serve the Beaumont Hospital area:

16: Goes through O'Connell street to Beaumont Road.

16A: Goes through O'Connell Street to Beaumont Road.

17A: From Blanchardstown Centre towards Kilbarrack.

14: From Eden Quay to the front gates of Beaumont Hospital (10 minutes walk).

27: From Talbot St. to Northside Shopping Centre (10 minutes walk).

27B: From Eden Quay to Beaumont Hospital.

104: From Clontarf Bus Garage to Beaumont Hospital and then on to the Omni Park Shopping Centre and then on to Cappagh Hospital.

How do I get to St. Joseph's Hospital??

Bus

The following buses serve St. Joseph's Hospital:

29A: Eden Quay to Newgrove Cross

Bus timetables are available from the main reception, near the hospital's front entrance. Also see www.dublinbus.ie for more information.

Taxi

There is a taxi rank at the front entrance of the hospital.

Train

Irish Rail provides regular train links from around the country to Dublin at Connolly and Heuston stations. The Luas runs between Connolly and Heuston Stations. For more information visit www.irishrail.ie
Talking Timetable: 1890 77 88 99

From Connolly Station; the 27B bus goes to Beaumont Hospital. The 27B bus stop is located directly opposite Connolly Station.

From Heuston Station take Luas to Connolly Station then 27B bus.

Car

Car parking is available in the multi-storey car park at the front of the hospital. Parking is well sign-posted. There is a charge for car parking. A 24 hour pass costs €8.50. Disabled parking is available.

What if I have a questions about my appointment?

You can phone the lung clinic secretarial staff Monday-Friday from 8.30am to 4:30pm. You can leave a voice message outside of these hours and staff will return your call when the office re-opens. Telephone (01) 809 3484.

Can I speak with a lung nurse?

If you have any questions after your clinic visit, please phone the lung nurse co-ordinator at (01) 809 2544 or 797 4892.

What if I don't speak English?

If you need an interpreter to translate for you, please ask your family doctor (GP) to let us know when sending your referral to the lung clinic.

Beaumont hospital patient booklet

You can find more information about Beaumont hospital in the hospital's patient information booklet. This is available on the hospitals website. A copy of the patient booklet for Beaumont Hospital can be downloaded on the web page, www.beaumont.ie

Is there a coffee shop in the hospital?

A coffee shop is located on the main corridor. It is open Monday to Thursday from 8.15am to 7.30pm, on Friday from 8:15am to 6:30pm and on Saturday and Sunday from 11.00am to 5.30pm. It is closed on bank holidays.

Is there a bakery in the hospital?

There is a bakery just inside the hospital's front entrance. It is open Monday to Friday from 9:00am to 7.30pm.

Is there a shop in the hospital?

The hospital shop is on the main corridor. It is open Monday to Friday from 8.00am to 9.00pm, Saturday from 9.00am to 8.00pm and Sunday from 10:00am to 6:00pm. It is closed on bank holidays.

Bank and cash machine

The Bank of Ireland is located on the main corridor. A cash machine is next to the bank. It is open Monday, Tuesday, Thursday, and Friday from 10am to 12.30am and 1.30pm to 4.00pm. It is open on Wednesdays from 10:30am to 4:00pm.

Key contacts

Main hospital switch:	(01) 809 3000
Lung secretary tel:	(01) 809 3484
Lung nurse:	(01) 809 2544 or 797 4892
Smoking Cessation Officer:	(01) 809 2941
Hospital website:	www.beaumont.ie

Your Service, Your Say

We try to provide a positive and supportive experience for people using our service. We welcome your comments, suggestions and complaints about the service. You can give us your comments by:

- talking to a member of staff;
- filling out a Your Service, Your Say leaflet. You can find these in many places around the hospital;
- phoning the HSE Information Line on 1850 24 1850;
- emailing your comments to yoursay@hse.ie; or
- visiting www.hse.ie.



your service
your say

This booklet will be reviewed as new evidence emerges. While every effort has been made to ensure that it is accurate, we do not accept responsibility for errors or omissions.



National Cancer Control Programme
An Clár Náisiúnta Rialaithe Ailse
King's Inns House
200 Parnell Street
Dublin 1

Tel: +353 1 828 7100
Fax: +353 1 828 7160
e-mail: info@cancercontrol.ie
www.hse.ie/cancer

March 2015
NCCP-COM-043-02
© National Cancer Control Programme