

Mater Misericordiae University Hospital
Designated Cancer Centre Dublin North East

Rapid Access Lung Clinic

A Guide for Patients

Contents

Why has my doctor sent me to the Rapid Access Lung Clinic? (Lung Clinic)	2
What happens at the Lung Clinic?	2
What your lungs do?	3
How long will I be at the Lung Clinic?	4
Should I bring a relative or friend to the Lung Clinic?	4
What should I bring to the Lung Clinic?	4
What happens when I arrive at the Lung Clinic?	4
What tests might I have?	5
When will I get my test results?	9
What can I do to improve my health?	10
Have you thought about quitting smoking?	11
Where will I find the Lung Clinic?	12
What if I have questions about my appointment?	17
Can I speak with a lung nurse?	17
What if I don't speak English?	17
Is there a shop in the hospital?	18
Is there a coffee shop in the hospital?	18
Is there a bank?	18
Key contacts	19
Your Service, Your Say	19
Do you have questions to ask your doctor?	20

Why has my doctor sent me to the Rapid Access Lung Clinic? (Lung Clinic)

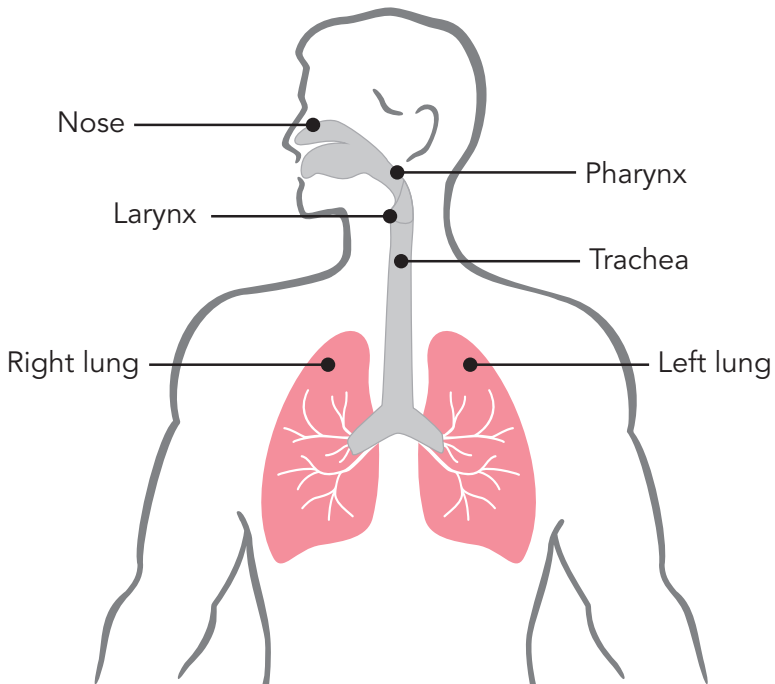
Your family doctor (GP) has sent you to the Lung Clinic because they are concerned about your symptoms or your chest x-ray. Your family doctor wants you to see a specialist lung doctor.

What happens at the Lung Clinic?

- The Lung Clinic has specialist staff and equipment so it can see patients and arrange tests quickly.
- You will usually get an appointment within 2 weeks.
- At the clinic, the doctor will ask you about your symptoms, examine you and decide what tests you may need.
- The lung nurse will help organise your tests and answer any questions you may have about the tests. You can talk with the nurse at the clinic or by phone.

What your lungs do?

1. You breathe in air through your nose and mouth.
2. This air travels to your lungs through your windpipe.
3. Your windpipe is made up of three parts:
 - the pharynx (back of your throat);
 - the larynx (your voicebox); and
 - the trachea.
4. Your lungs are located in your chest. You have two lungs, one on the left and one on the right.



How long will I be at the Lung Clinic?

If you need a lot of tests, your visit to the lung clinic might take a half day. It is important that you arrive on time for your appointment. Don't arrive too early though as you won't be seen before your appointment time.

Should I bring a relative or friend to the Lung Clinic?

Yes, you can bring a relative or friend to the Lung Clinic. But please do not bring children with you. If you must bring a child, please bring a friend or relative to mind the child while you are with the doctor.

What should I bring to the Lung Clinic?

Please bring any medication you are taking.

What happens when I arrive at the Lung Clinic?

The receptionist will ask for your name, address, phone number, date of birth, next of kin and the name of your family doctor (GP). You will then see a doctor from the lung team.

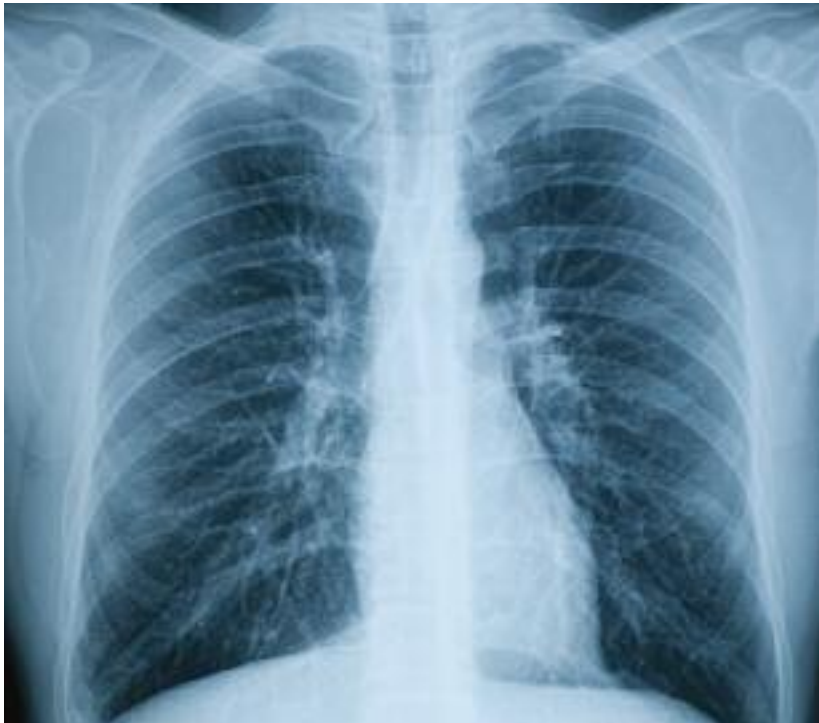
What tests might I have?

The lung doctor will ask you about your symptoms and will then examine you. After this examination, the doctor may decide you need some tests such as:

Here is a brief description of the tests you might have.

Chest x-ray

A chest x-ray takes a picture of your lungs. If your chest x-ray does not look normal, your doctor may arrange more tests.



Pulmonary function tests (PFTs)

These are breathing tests to check how well your lungs work. You blow into a mouthpiece on a machine. These tests are not painful. They take about 20 minutes.



CT scan

CT stands for computerised tomography. It is a test which gives a detailed picture of the inside of your body. You will be asked to lie on a table. The table will then pass through the CT scanner. The CT scanner takes x-rays which build up a picture of the inside of your body. Your local x-ray department will tell you more about having a CT scan.



Bronchoscopy

During this test, your doctor can look inside your lungs using a tube with a tiny camera and light attached. You will be given sedation for this test. The sedation will relax you and make you feel sleepy. A biopsy is often done at the same time. If you are having a bronchoscopy, the doctor or nurse will give you more information.

Endobronchial ultrasound (EBUS)

This is a type of bronchoscopy. If you are having an EBUS, the doctor or nurse will tell you more about it.

CT guided lung biopsy

A CT guided lung biopsy takes a tiny sample of your lung which is then sent to the lab for testing. This is done under local anaesthetic. If you are having a CT guided lung biopsy, the doctor or nurse will give you more information.

When will I get my test results?

Test results are usually available within one month after attending the lung clinic. We will contact you and ask you to come back to the clinic for your results. Please bring a relative or friend with you.

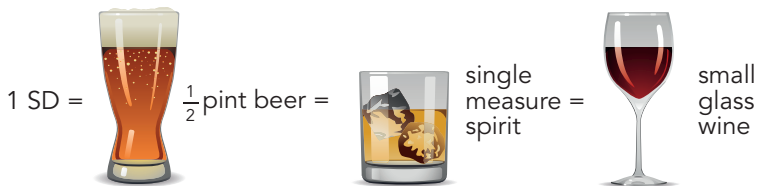
	Date	Time
• blood tests	_____	_____
• chest X-ray (if not already done)	_____	_____
• pulmonary function tests (PFTs)	_____	_____
• CT scan	_____	_____
• bronchoscopy	_____	_____
• EBUS	_____	_____
• CT guided lung biopsy	_____	_____

You may not need all these tests. Some of these tests may be done on the day of your visit. Other tests might be done on another day. **You can record the date and time of each test in the space above.**

What can I do to improve my health?

There are lots of things you can do.

- Stop smoking and avoid other peoples' smoke.
- Eat a healthy diet. This includes eating five portions of fruit or vegetables a day.
- Make sure you stay a healthy weight.
- Exercise for at least 30 minutes a day.
- Cover up in the sun and never use a sun-bed.
- Drink alcohol sensibly:
 - no more than 17 standard drinks (SD) for men a week;
 - no more than 11 standard drinks for women a week.



Have you thought about quitting smoking?

Smoking is a major risk factor for the following:

- cancer;
- heart disease;
- stroke or
- bronchitis and emphysema (also known as COPD – chronic obstructive pulmonary disease).

If you are a smoker, it is never too late to quit. The more often you try to quit, the more likely you are to stop. The trick is to keep trying!

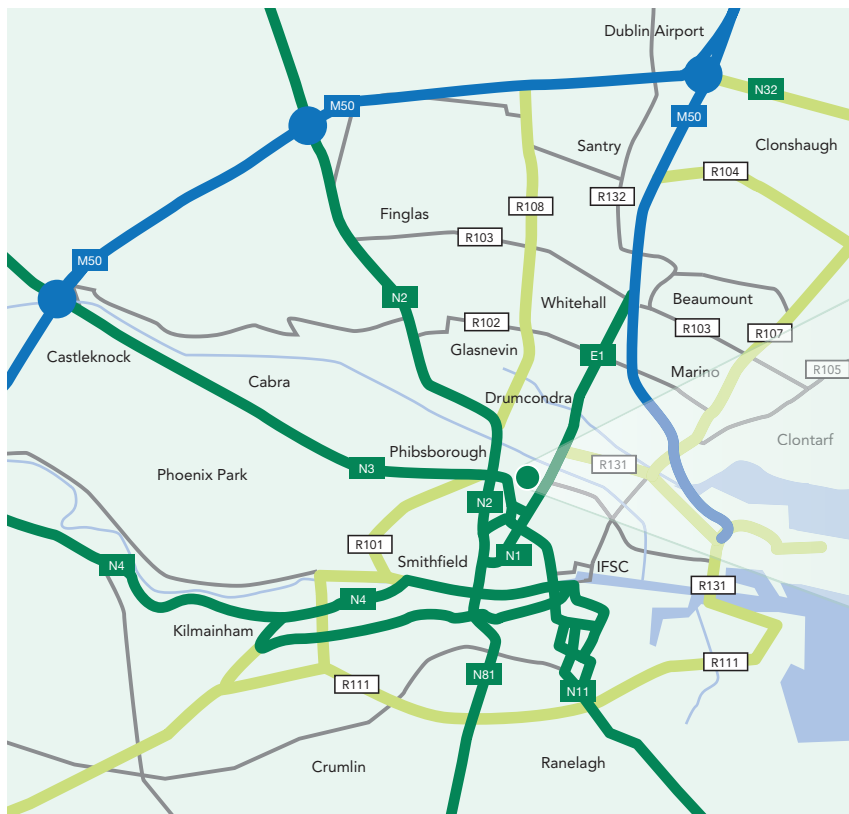
There are many benefits to quitting smoking.

- You will be healthier.
- Your medical treatments will work better.
- You will be a good role model for your family and friends.
- You will have more money in your pocket.

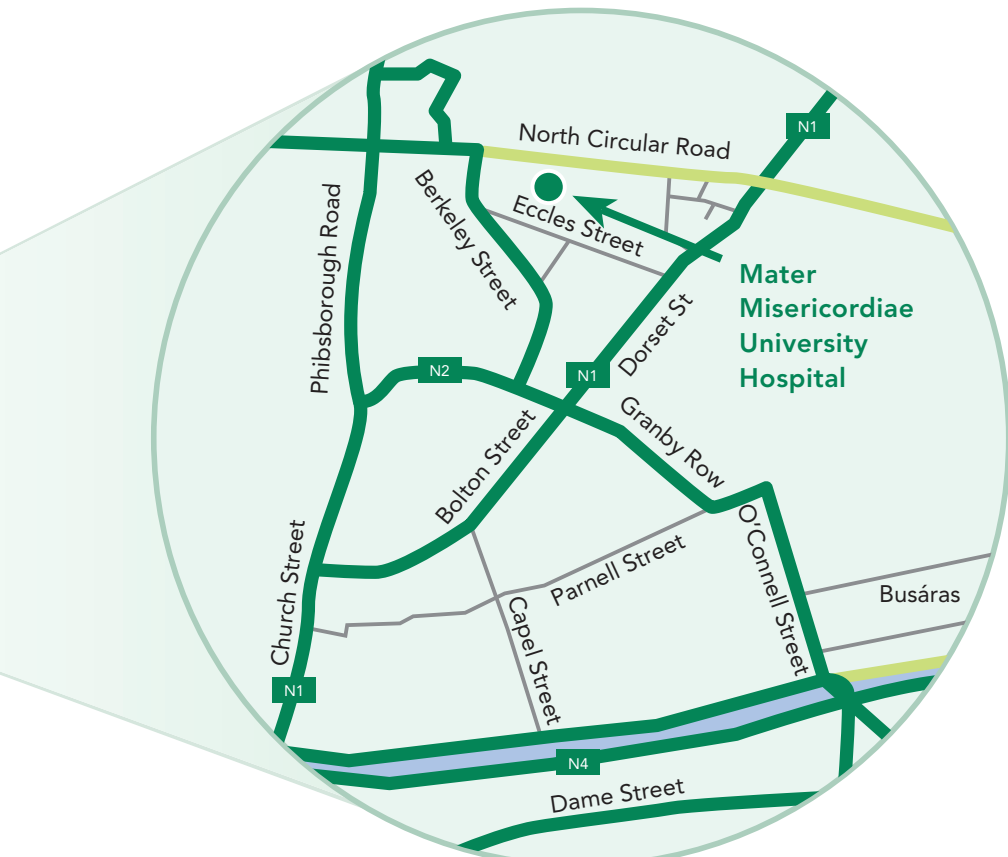
There is a lot of support to help you stop smoking. If you would like advice or support on quitting, talk to your family doctor (GP). You can also call the Quit Team on Freephone 1800 201 203. They can put you in touch with the smoking cessation officer in your area. You might find the Quit Campaign website useful, please go to www.quit.ie.

Where will I find the Lung Clinic?

The lung clinic is in 56 Eccles Street, Dublin 7 opposite the hospital.



GPS: N 53 21.5216 W 6 16.008



How do I get to Mater Misericordiae University Hospital?

The hospital is located in the northwest inner city between Eccles Street, Dorset Street, North Circular Road and Berkeley Road. It is a 10-15 minute walk from O'Connell Street in the city centre.

Bus

Stop	No.	Route
Eccles Street	121	Drimnagh - Cabra
Dorset Street	3	Sandymount or UCD - Whitehall
	11 / 11a	Clonskeagh - Glasnevin
	16/16A	Rathfarnham - Santry
	13	Ballymun - Merrion Square
	40 A/B/C/D	Finglas - City Centre
	122	Drimnagh - Cabra
	41A/B/C	Swords - City Centre
	33	Balbriggan - City Centre
	746	Dún Laoghaire - Cabra

Bus (continued)

Stop	No.	Route
Berkeley Road	10	UCD - Phoenix Park
	120	Cabra - City Centre
	38	Hawkins St. Blanchardstown
North Circular Road	122	Drimnagh - Cabra
	19	Dolphins Barn - Glasnevin
	19A	Walkinstown - Glasnevin
Mountjoy Square	145	Mountjoy Square - Bray

Low floor accessible bus routes serving the hospital include the 19A, 10A, 11A/B, 3, 3A, 746.

Car

There is no hospital car park. You can use public transport or take a taxi. For more information go to www.travelways.ie.

Eccles Street is a disk parking area and you can park up to a maximum of three hours. Parking disks machines are on Eccles Street. Other parking is available in the following car parks:

Wellington Street car park (webpage: www.parkopedia.ie)

Belvedere College car park (01 8749722)

Clery's car park (webpage: www.q-park.ie)

Ilac car park (webpage: www.q-park.ie)

There is a set-down and collection point for patients located at the entrance to the hospital on Eccles Street. Clamping is in place at certain entrances to the hospital. Disabled parking is available on Eccles Street.

What if I have questions about my appointment?

You can phone the lung clinic secretarial staff Monday-Friday from 8.30am to 4.30pm. You can leave a voice message outside of these hours and staff will return your call when the office re-opens.

Phone (01) 803 2644 or 803 2295

Can I speak with a lung nurse?

If you have any questions after your clinic visit, please phone the lung nurse co-ordinator at (01) 803 4257 or 803 2000 and ask for bleep 3446. If you get a voicemail when you telephone, please leave a message and your call will be returned as soon as possible.

What if I don't speak English?

If you need an interpreter to translate for you, please ask your family doctor (GP) to let us know when sending your referral to the lung clinic.

Is there a shop in the hospital?

There is a shop located in the main hospital reception. It is open Monday to Sunday from 8.00am to 8.00pm and on Saturday and Sunday from 12noon to 8pm.

Is there a coffee shop in the hospital?

There is coffee shop in the main hospital reception. It is open Monday to Friday from 8.30am to 6.30pm and on Saturday and Sunday from 12noon to 6.30pm.

Is there a bank?

A Bank of Ireland and cash machine are located in the main reception. It is open Monday to Friday from 10.00am to 12noon and 1.00pm to 3:00pm.

Key contacts

Main hospital switch:	(01) 803 2000
Central appointments:	(01) 803 2644 or 803 2295
Smoking Cessation Officer:	(01) 803 4021
Lung Nurse Specialist:	(01) 8034257 or 803 2000 and ask for bleep 3446
Hospital web page:	www.mater.ie

Your Service, Your Say

We try to provide a positive and supportive experience for people using our service. We welcome your comments, suggestions and complaints about the service. You can give us your comments by:

- talking to a member of staff;
- filling out a Your Service, Your Say leaflet. You can find these in many places around the hospital;
- phoning the HSE Information Line on 1850 24 1850;
- emailing your comments to yoursay@hse.ie; or
- visiting www.hse.ie.

The logo for 'Your Service Your Say' features the text 'your service' on the top line and 'your say' on the bottom line, both in a lowercase, sans-serif font. The text is centered between two horizontal lines. The top line is purple on the left and yellow on the right. The bottom line is purple on the left, blue in the middle, and yellow on the right.

your service
your say

This booklet will be reviewed as new evidence emerges. While every effort has been made to ensure that it is accurate, we do not accept responsibility for errors or omissions.



National Cancer Control Programme
An Clár Náisiúnta Rialaithe Ailse
King's Inns House
200 Parnell Street
Dublin 1

Tel: +353 1 828 7100
Fax: +353 1 828 7160
e-mail: info@cancercontrol.ie
www.hse.ie/cancer

March 2015
NCCP-COM-047-02
© National Cancer Control Programme