

University Hospital Limerick
Designated Cancer Centre Mid West

Rapid Access Lung Clinic

A Guide for Patients

Contents

Why has my doctor sent me to the Rapid Access Lung Clinic? (Lung Clinic)	2
What happens at the Lung Clinic?	2
What your lungs do?	3
How long will I be at the Lung Clinic?	4
Should I bring a relative or friend to the Lung Clinic?	4
What should I bring to the Lung Clinic?	4
What happens when I arrive at the Lung Clinic?	4
What tests might I have?	5
When will I get my test results?	9
What can I do to improve my health?	10
Have you thought about quitting smoking?	11
Where will I find the Lung Clinic?	12
What if I have questions about my appointment?	19
Can I speak with a lung nurse?	19
What if I don't speak English?	20
Is there a shop in the hospital?	20
Is there a canteen in the hospital?	21
Key contacts	21
Your Service, Your Say	22
Do you have questions to ask your doctor?	23

Why has my doctor sent me to the Rapid Access Lung Clinic? (Lung Clinic)

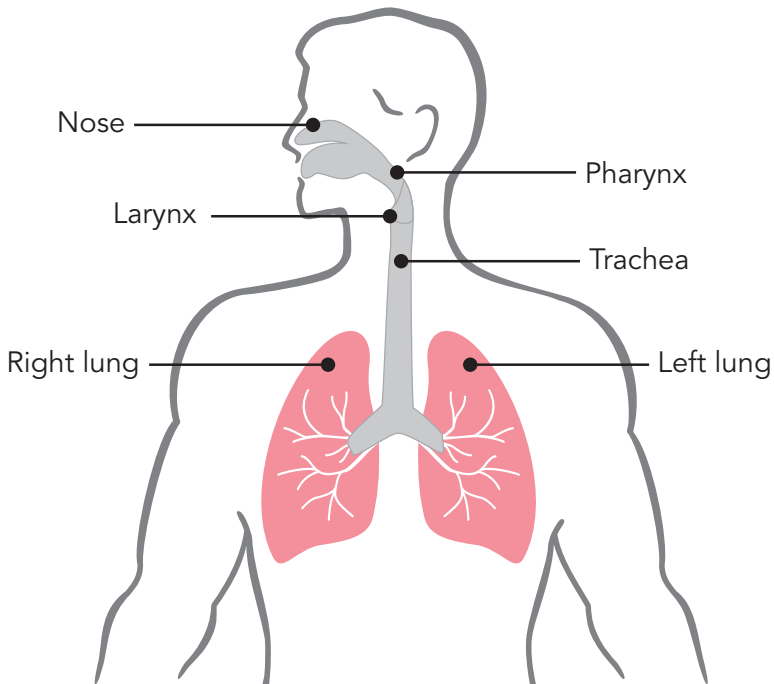
Your family doctor (GP) has sent you to the Lung Clinic because they are concerned about your symptoms or your chest x-ray. Your family doctor wants you to see a specialist lung doctor.

What happens at the Lung Clinic?

- The Lung Clinic has specialist staff and equipment so it can see patients and arrange tests quickly.
- You will usually get an appointment within 2 weeks.
- At the clinic, the doctor will ask you about your symptoms, examine you and decide what tests you may need.
- The lung nurse will help organise your tests and answer any questions you may have about the tests. You can talk with the nurse at the clinic or by phone.

What your lungs do?

1. You breathe in air through your nose and mouth.
2. This air travels to your lungs through your windpipe.
3. Your windpipe is made up of three parts:
 - the pharynx (back of your throat);
 - the larynx (your voicebox); and
 - the trachea.
4. Your lungs are located in your chest. You have two lungs, one on the left and one on the right.



How long will I be at the Lung Clinic?

If you need a lot of tests, your visit to the lung clinic might take a half day. It is important that you arrive on time for your appointment. Don't arrive too early though as you won't be seen before your appointment time.

Should I bring a relative or friend to the Lung Clinic?

Yes, you can bring a relative or friend to the Lung Clinic. But please do not bring children with you. If you must bring a child, please bring a friend or relative to mind the child while you are with the doctor.

What should I bring to the Lung Clinic?

Please bring any medication you are taking.

What happens when I arrive at the Lung Clinic?

The receptionist will ask for your name, address, phone number, date of birth, next of kin and the name of your family doctor (GP). You will then see a doctor from the lung team.

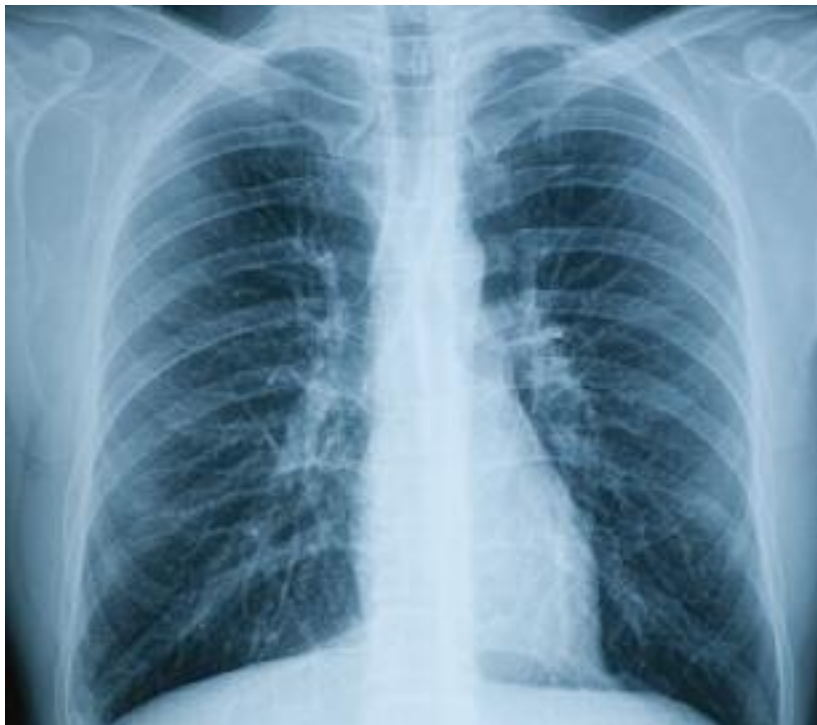
What tests might I have?

The lung doctor will ask you about your symptoms and will then examine you. After this examination, the doctor may decide you need some tests such as:

Here is a brief description of the tests you might have.

Chest x-ray

A chest x-ray takes a picture of your lungs. If your chest x-ray does not look normal, your doctor may arrange more tests.



Pulmonary function tests (PFTs)

These are breathing tests to check how well your lungs work. You blow into a mouthpiece on a machine. These tests are not painful. They take about 20 minutes.



CT scan

CT stands for computerised tomography. It is a test which gives a detailed picture of the inside of your body. You will be asked to lie on a table. The table will then pass through the CT scanner. The CT scanner takes x-rays which build up a picture of the inside of your body. Your local x-ray department will tell you more about having a CT scan.



Bronchoscopy

During this test, your doctor can look inside your lungs using a tube with a tiny camera and light attached. You will be given sedation for this test. The sedation will relax you and make you feel sleepy. A biopsy is often done at the same time. If you are having a bronchoscopy, the doctor or nurse will give you more information.

Endobronchial ultrasound (EBUS)

This is a type of bronchoscopy. If you are having an EBUS, the doctor or nurse will tell you more about it.

CT guided lung biopsy

A CT guided lung biopsy takes a tiny sample of your lung which is then sent to the lab for testing. This is done under local anaesthetic. If you are having a CT guided lung biopsy, the doctor or nurse will give you more information.

When will I get my test results?

Test results are usually available within one month after attending the lung clinic. We will contact you and ask you to come back to the clinic for your results. Please bring a relative or friend with you.

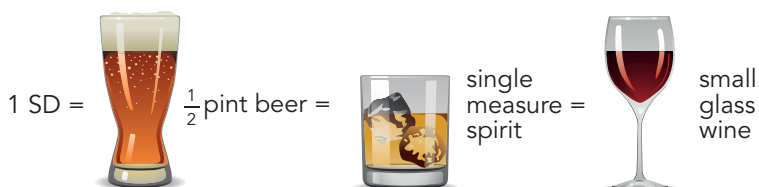
	Date	Time
• blood tests	_____	_____
• chest X-ray (if not already done)	_____	_____
• pulmonary function tests (PFTs)	_____	_____
• CT scan	_____	_____
• bronchoscopy	_____	_____
• EBUS	_____	_____
• CT guided lung biopsy	_____	_____

You may not need all these tests. Some of these tests may be done on the day of your visit. Other tests might be done on another day. **You can record the date and time of each test in the space above.**

What can I do to improve my health?

There are lots of things you can do.

- Stop smoking and avoid other peoples' smoke.
- Eat a healthy diet. This includes eating five portions of fruit or vegetables a day.
- Make sure you stay a healthy weight.
- Exercise for at least 30 minutes a day.
- Cover up in the sun and never use a sun-bed.
- Drink alcohol sensibly:
 - no more than 17 standard drinks (SD) for men a week;
 - no more than 11 standard drinks for women a week.



Have you thought about quitting smoking?

Smoking is a major risk factor for the following:

- cancer;
- heart disease;
- stroke or
- bronchitis and emphysema (also known as COPD – chronic obstructive pulmonary disease).

If you are a smoker, it is never too late to quit. The more often you try to quit, the more likely you are to stop. The trick is to keep trying!

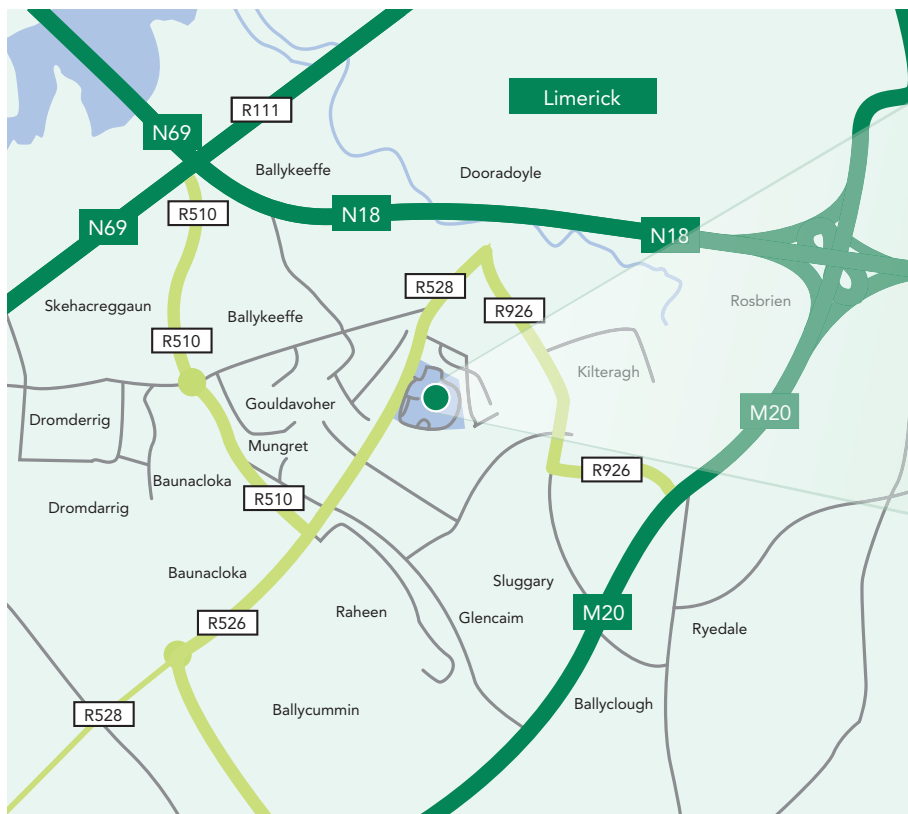
There are many benefits to quitting smoking.

- You will be healthier.
- Your medical treatments will work better.
- You will be a good role model for your family and friends.
- You will have more money in your pocket.

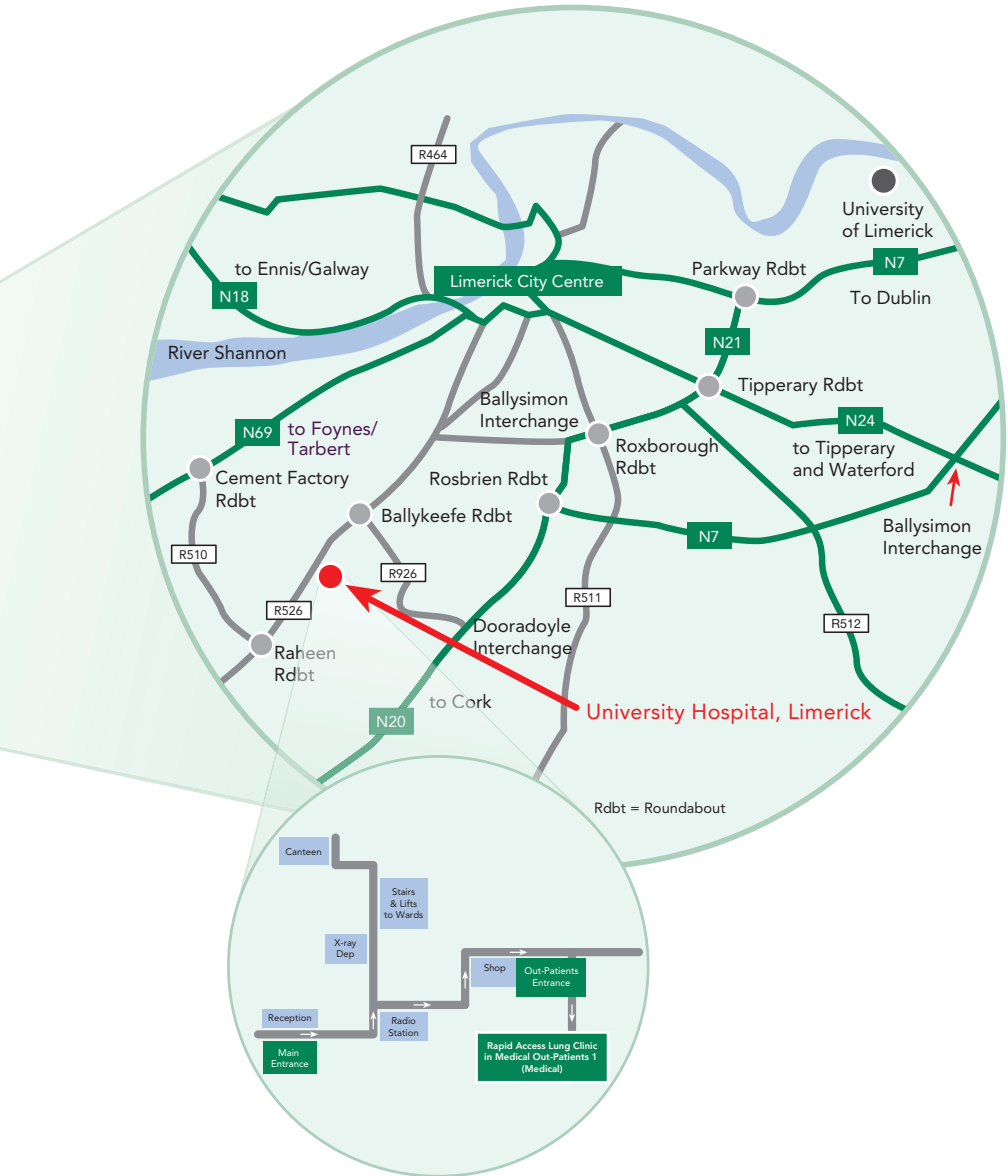
There is a lot of support to help you stop smoking. If you would like advice or support on quitting, talk to your family doctor (GP). You can also call the Quit Team on Freephone 1800 201 203. They can put you in touch with the smoking cessation officer in your area. You might find the Quit Campaign website useful, please go to www.quit.ie.

Where will I find the Lung Clinic?

The lung clinic is in Outpatients 1 (Medical) in the outpatient department. Please go to the main hospital reception for directions.



GPS: N 52 38.0412 W 8 39.1715



How do I get to University Hospital, Limerick?

The University Hospital, Limerick is located approximately three miles south of Limerick city centre.

Directions from Ennis/Galway

Approaching Limerick at junction 4 continue forward onto the N18 - Toll (sign-posted Limerick East - Toll)

N18 Toll Plaza

Limerick Tunnel

Leave the N18 at junction 2, then at roundabout take the 4th exit, then at roundabout take the 1st exit onto Ard Aulin - R510 (sign-posted Raheen Business Park)

Continue forward onto Ard Aulin - R510 Entering Limerick

At roundabout take 2nd exit onto Inis Mor - R510

At Quinns Cross roundabout take the 2nd exit onto Aisling Gael - R510 (sign-posted Cork N20, Tralee N21)

At Raheen Roundabout take the 1st exit onto Saint Nessian's Road - R526 (sign-posted City Centre)

At roundabout take the 3rd exit (sign-posted Hospital)

Directions from Cork

Join the M20 motorway (sign-posted Limerick)

Leave the M20 at junction 3, then join the M20 SPUR motorway (sign-posted Raheen Business Park)

At Ballycummin roundabout take the 2nd exit onto the R510 (sign-posted Galway N18)

At Loughmore roundabout take the 2nd exit onto the R526 (sign-posted Galway N18)

Continue forward onto the R526 Entering Limerick

At Raheen Roundabout take the 2nd exit onto Saint Nessian's Road –R526 (sign-posted City Centre)

At roundabout take the 3rd exit (sign-posted Hospital)

Directions from Dublin

At junction 28 continue forward onto the M7 to bypass Limerick

Leave the M7 at junction 30 (Rossbrien Interchange), then join the M20 motorway (sign-posted Cork)

Leave the M20 at junction 2, then at roundabout take the 3rd exit, then merge onto the R926

Continue forward, then at the roundabout take the 1st exit onto the R926 (sign-posted Dooradoyle)

Continue forward onto the R926 Entering Limerick

At roundabout take the 2nd exit onto Dooradoyle Road - R926 (sign-posted Dooradoyle)

At traffic lights continue forward onto Dooradoyle Road - R926

At Ballykeeffe Roundabout take the 1st exit onto Saint Nessian's Road - R526 (sign-posted Patrickswell)

At Saint Pauls Roundabout take the 1st exit onto Saint Nessian's Road - R526

At roundabout take the 1st exit (sign-posted Hospital)

Directions from Tipperary/Waterford

Approaching Limerick at the traffic signals turn left, then join the M7 motorway (sign-posted Cork)

Leave the M7 at junction 30 (Rossbrien Interchange), then join the M20 motorway (sign-posted Cork)

Leave the M20 at junction 2, then at roundabout take the 3rd exit, then merge onto the R926

Continue forward, then at the roundabout take the 1st exit onto the R926 (sign-posted Dooradoyle)

Continue forward onto the R926 Entering Limerick

At roundabout take the 3rd exit onto Dooradoyle Road - R926 (sign-posted Dooradoyle)

At roundabout take the 2nd exit onto Dooradoyle Road - R926 (sign-posted Dooradoyle)

At traffic lights continue forward onto Dooradoyle Road - R926

At Ballykeeffe Roundabout take the 1st exit onto Saint Nesses's Road - R526 (sign-posted Patrickswell)

At Saint Pauls Roundabout take the 1st exit onto Saint Nesses's Road - R526

At roundabout take the 1st exit (sign-posted Hospital)

Bus service

The 304A runs from Colbert Station, Parnell Street Bus and Train Station every 10 to 15 minutes to the hospital. The bus stop is located to the left of Colbert Station.

The 304 runs from Sarsfield Street (adjacent to Debenhams) to the hospital every 10 minutes. The bus service runs Monday – Saturday from 7.00am and Sunday from 12.00 noon.

The Tralee and Killarney Expressway will pick up and set down passengers at the hospital bus stop. For more information ring Bus Eireann at (061) 313 333 or visit: www.buseireann.ie

Train service

Irish Rail provides regular train links from Thurles, Ennis, Limerick Junction, Cork and Galway to Limerick. For more information ring Irish Rail on (061) 315 555 or visit: www.irishrail.ie

Talking Timetable: 1890 77 88 99

Taxis

You can order a taxi at the main hospital reception. Taxis are also available at Colbert Train Station.

Car

Car parking is available on the hospital campus and is well sign-posted. There is a charge for car parking. The car park is located at the front of the hospital.

What if I have a questions about my appointment?

You can phone the lung clinic secretarial staff Monday-Friday from 9.30am – 5.00pm. You can leave a voice message outside of these hours and staff will return your call when the office re-opens. Telephone (061) 585637

Can I speak with a lung nurse?

If you have any questions after your clinic visit, please phone the lung nurse co-ordinator at (061) 485317 or (061) 301111, bleep 436.

If you get a voicemail when you telephone, please leave a message and your call will be returned as soon as possible.

In case of emergency please contact your GP or come to the Emergency Department at your local hospital.

What if I don't speak English?

If you need an interpreter to translate for you, please ask your family doctor (GP) to let us know when sending your referral to the lung clinic.

Is there a shop in the hospital?

There are shops in the main hospital reception and near the outpatient area.

Opening hours:

Main hospital reception:

Monday to Friday: 8.00am – 8.30pm

Saturday to Sunday: 9.00am – 8.30pm

Outpatients:

Monday to Thursday: 9.00am – 5.00pm

Friday: 9.00am – 4.00pm

Is there a canteen in the hospital?

The hospital canteen is open to the public at specific times throughout the day.

Opening hours:

Breakfast	7.40am – 11.20am
Lunch Monday to Saturday:	12.00 noon – 2.00pm
Sundays and Bank Holidays:	12.00 noon – 1.40pm
Afternoon Tea & Supper:	3.30pm – 6.00pm

Key contacts

Main hospital switch:	(061) 482219
Lung Clinic:	(061) 585637
Lung nurse co-ordinator and ask for bleep 436.	(061) 485317 or (061) 301111
Smoking Cessation Officer:	(061) 482729
Hospital website:	http://www.hse.ie/eng/services/find_a_service/hospscancer/dooradoyle/

The University Hospital, Limerick, is a smoke free campus.

Your Service, Your Say

We try to provide a positive and supportive experience for people using our service. We welcome your comments, suggestions and complaints about the service. You can give us your comments by:

- talking to a member of staff;
- filling out a Your Service, Your Say leaflet. You can find these in many places around the hospital;
- phoning the HSE Information Line on 1850 24 1850;
- emailing your comments to yoursay@hse.ie; or
- visiting www.hse.ie.

The logo for 'Your Service, Your Say' features the text 'your service' on the top line and 'your say' on the bottom line, both in a lowercase, sans-serif font. The text is centered between two horizontal bars. Each bar is composed of three segments: a long purple segment on the left, a short blue segment in the middle, and a long yellow segment on the right.

your service
your say

Do you have questions to ask your doctor?

It is a good idea to write your questions down so you don't forget anything when you see the doctor.

This booklet will be reviewed as new evidence emerges. While every effort has been made to ensure that it is accurate, we do not accept responsibility for errors or omissions.



National Cancer Control Programme
An Clár Náisiúnta Rialaithe Ailse
King's Inns House
200 Parnell Street
Dublin 1

Tel: +353 1 828 7100
Fax: +353 1 828 7160
e-mail: info@cancercontrol.ie
www.hse.ie/cancer

March 2015
NCCP-COM-046-02
© National Cancer Control Programme