

# **COVID-19 Daily Operations Update Acute Hospitals**

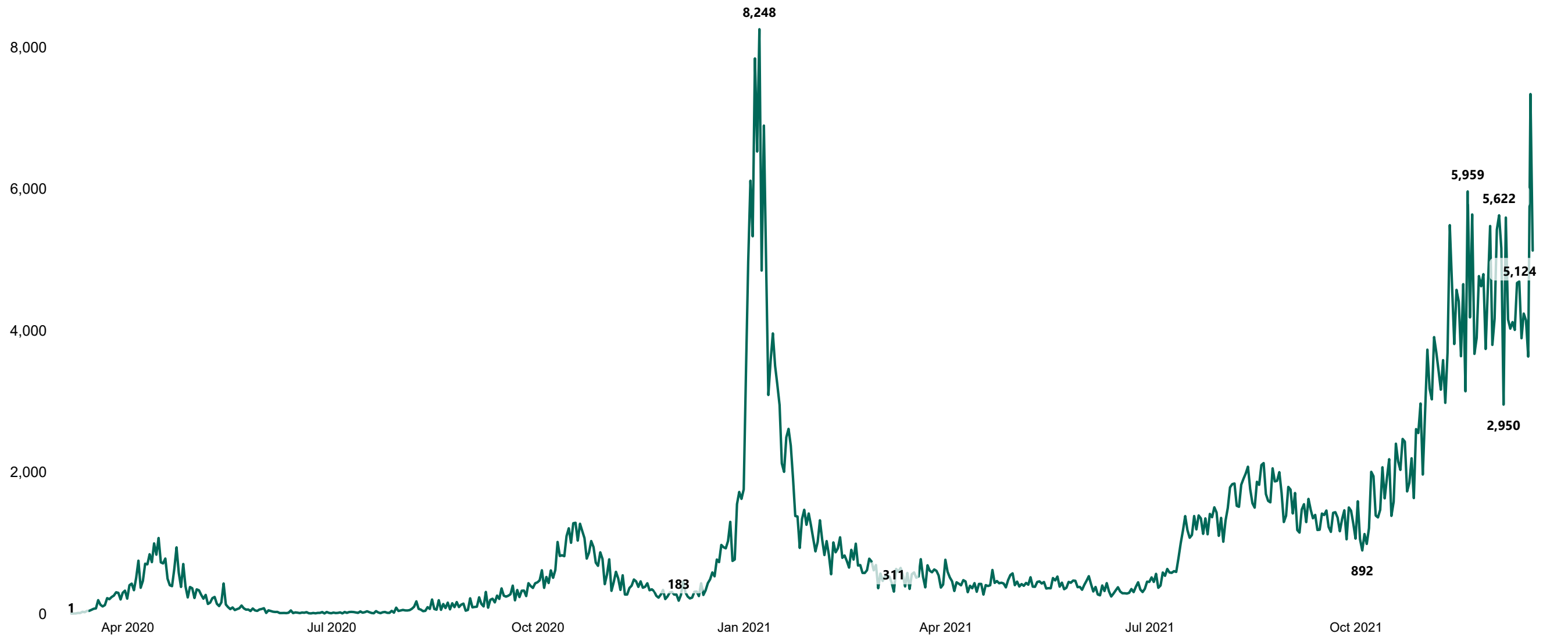
## **Performance Management and Improvement Unit**

2000hrs Sunday 19th December 2021

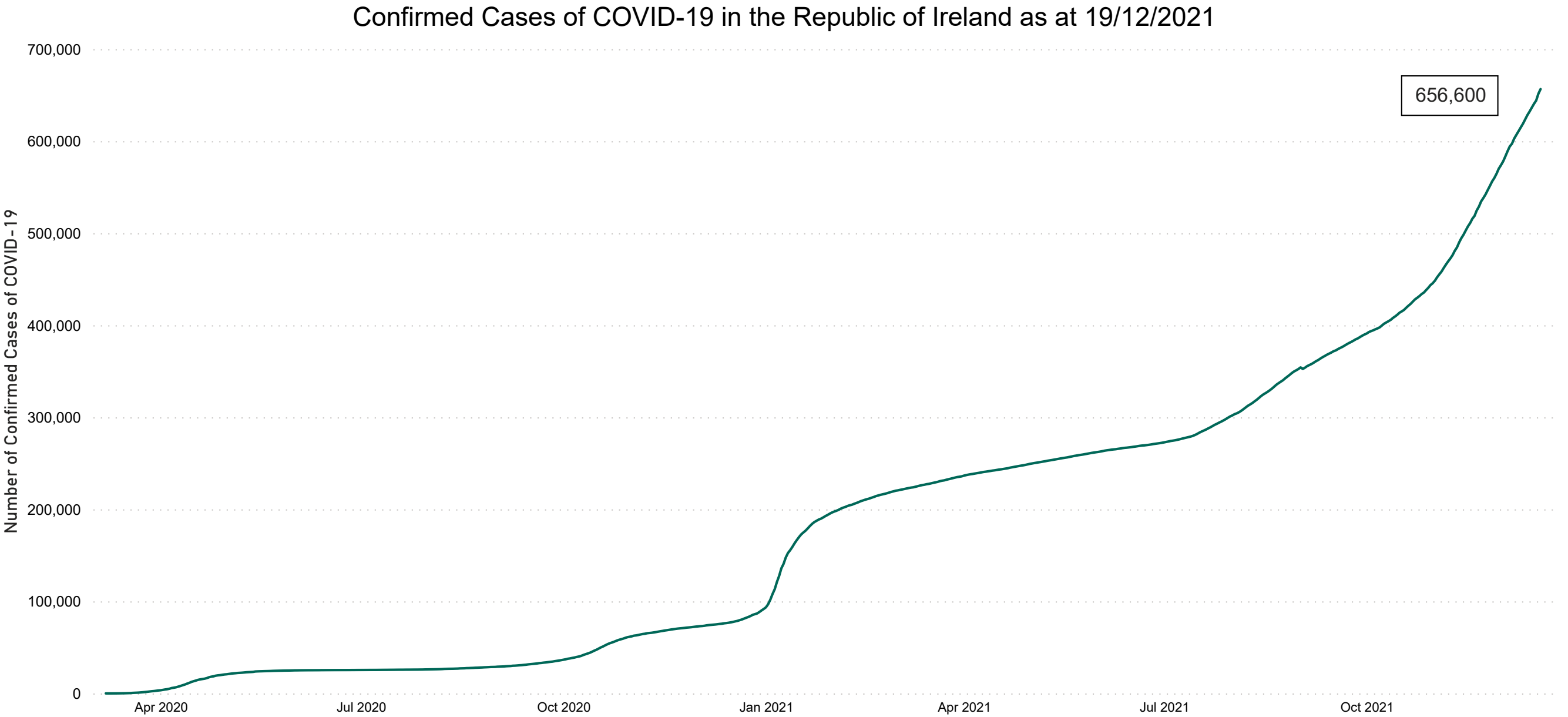


# New Confirmed COVID-19 Cases in the Republic of Ireland as at 19/12/2021

New Confirmed COVID-19 Cases in the Republic of Ireland as at 19/12/2021



# Confirmed Cases of COVID-19 in the Republic of Ireland as at 19/12/2021



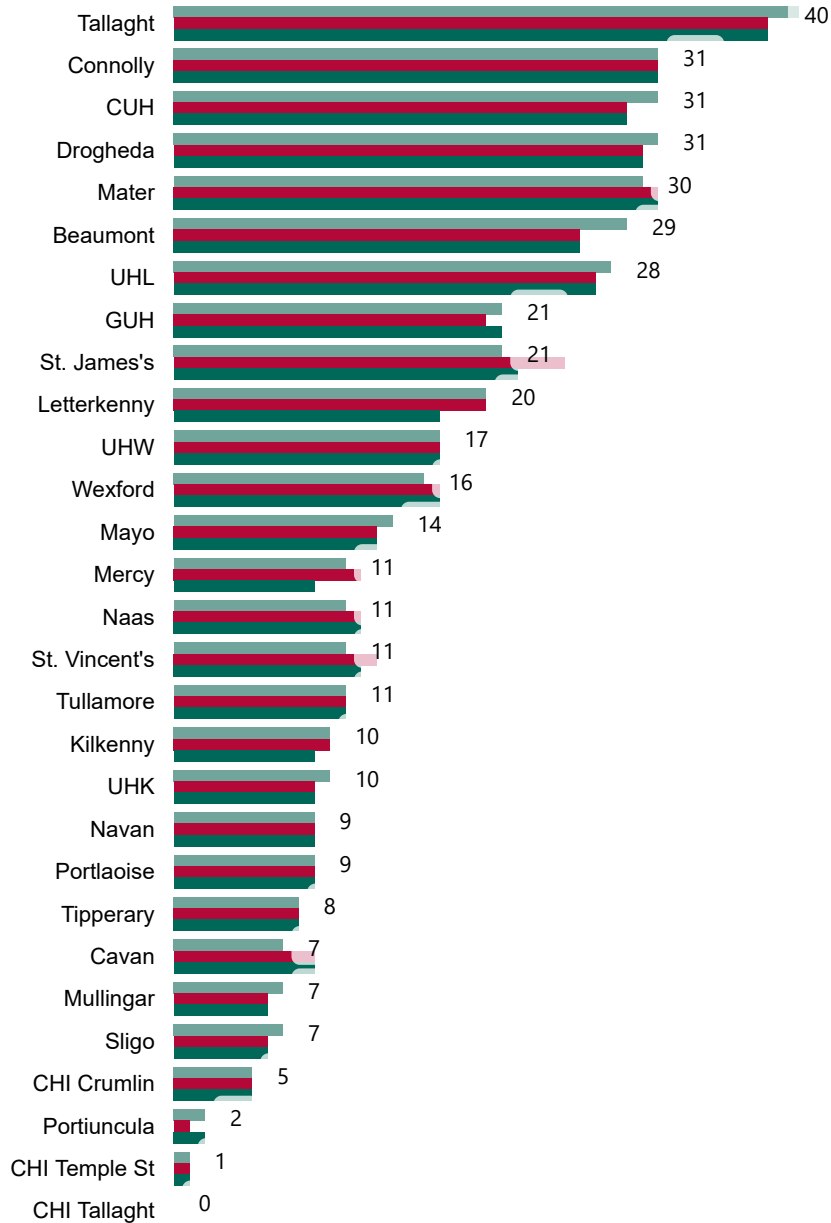
**Source:** Department of Health 2020, < <https://www.gov.ie/en/news/7e0924-latest-updates-on-covid-19-coronavirus/>> up to 14/05/21 and from <<https://covid19ireland-geohive.hub.arcgis.com/>> thereafter

# Geographical Spread of COVID-19 Confirmed Cases and Suspected Cases across Acute Hospital Sites as at 19/12/2021 20:00



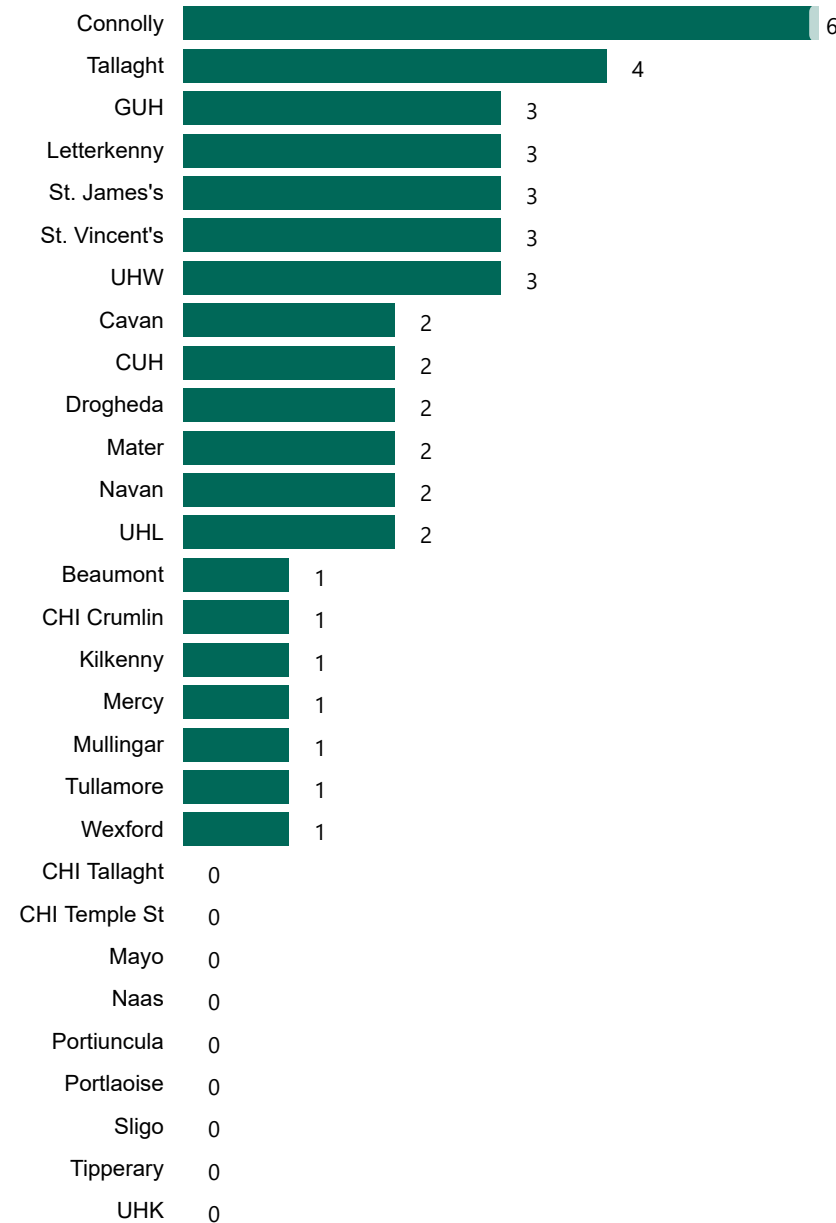
### Total Confirmed COVID-19 Cases

8am	2pm	8pm
<b>436</b>	<b>445</b>	<b>448</b>



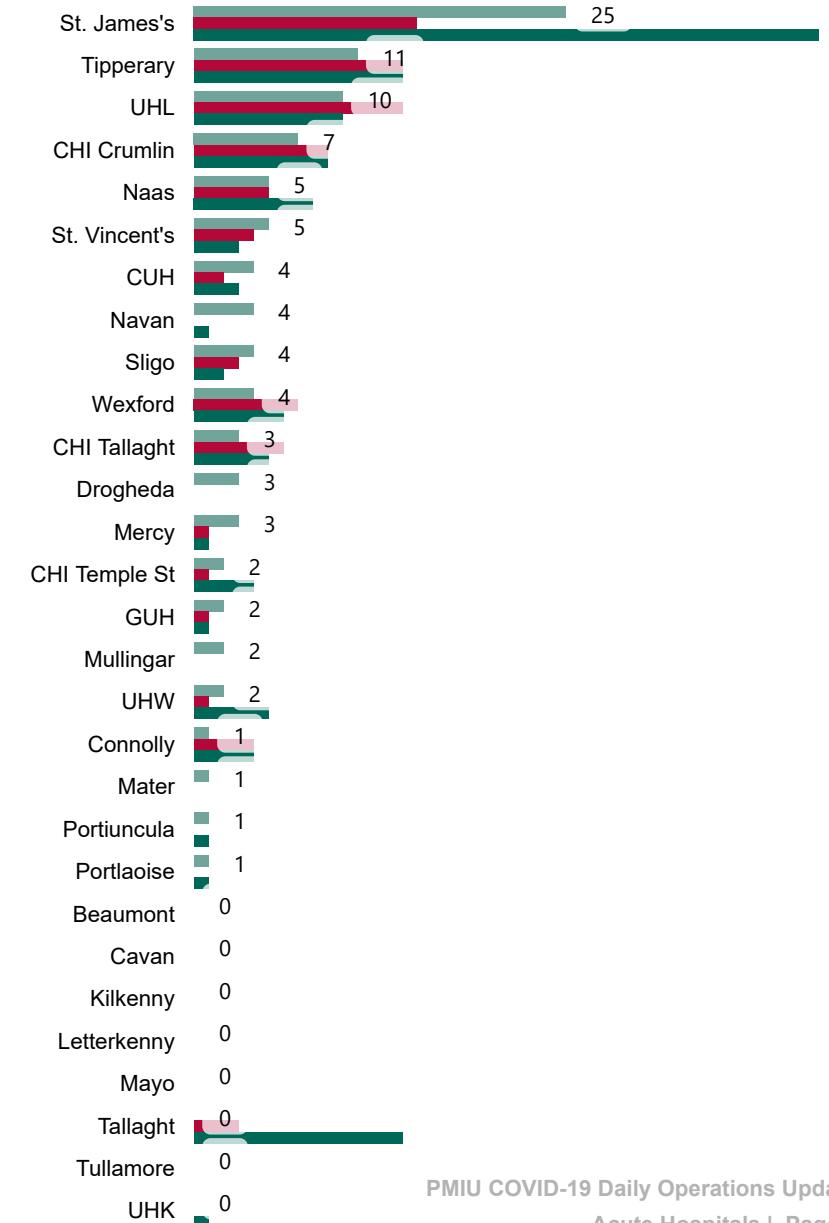
### Total Confirmed COVID-19 Cases (Past 24 Hours)

8am
<b>44</b>



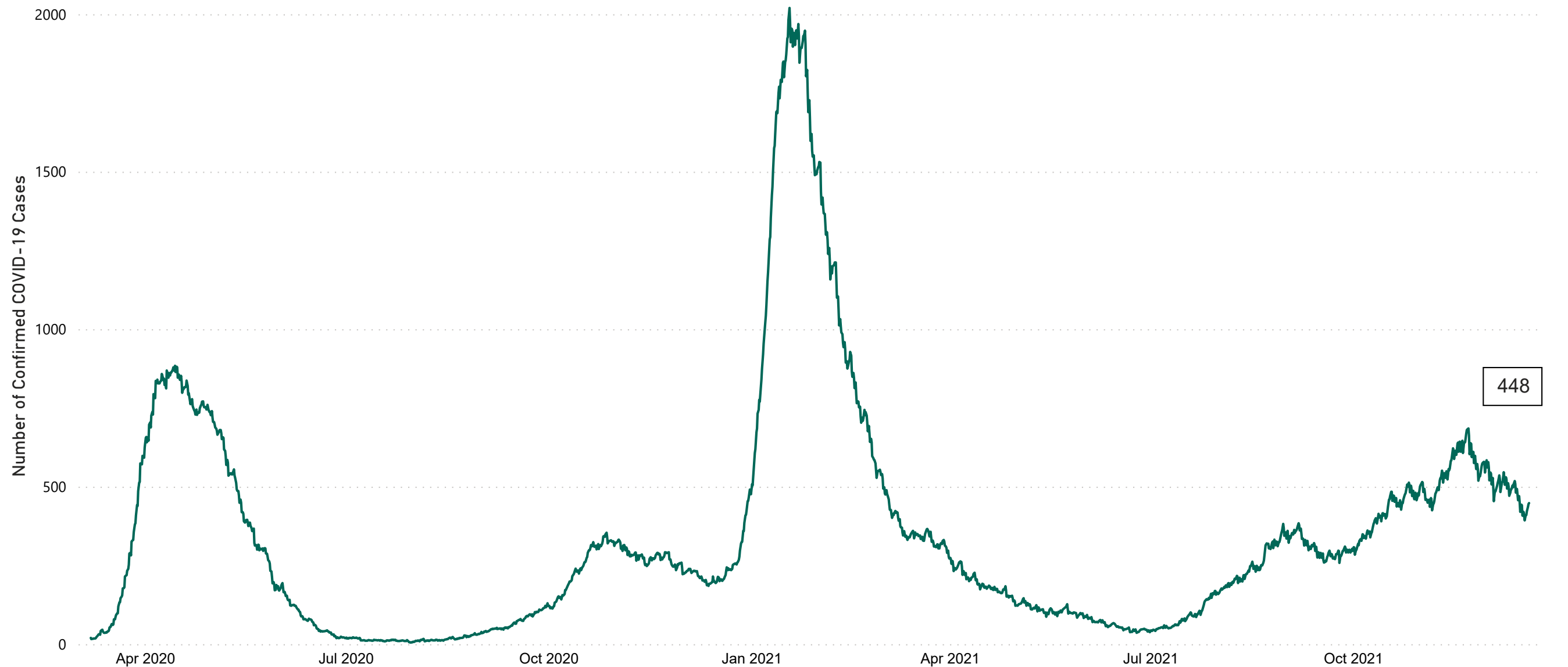
### Current Number of COVID-19 Suspected Cases

8am	2pm	8pm
<b>135</b>	<b>90</b>	<b>100</b>



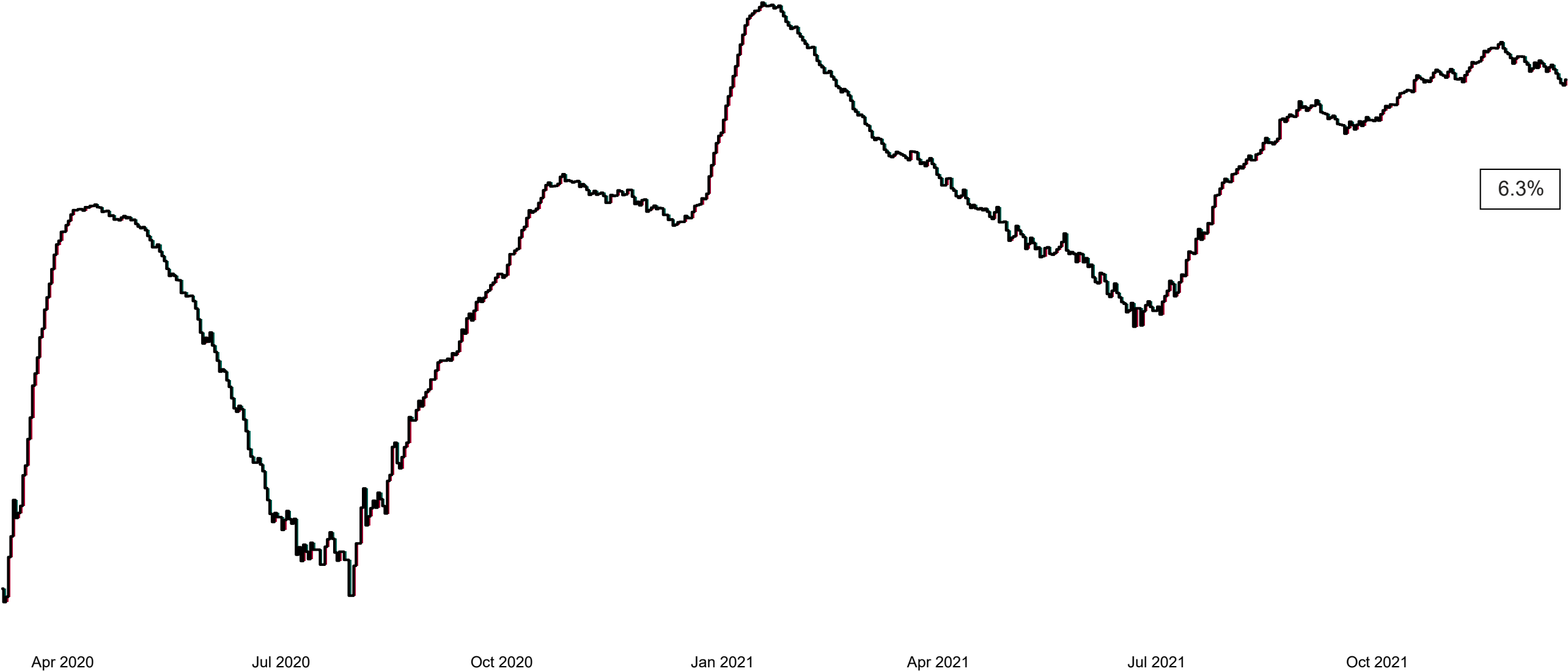
# Number of Confirmed COVID-19 Cases Admitted across 29 acute sites (including CHI)

Number of Confirmed COVID-19 Cases Admitted on Site at 0800hrs, 1400hrs and 2000hrs



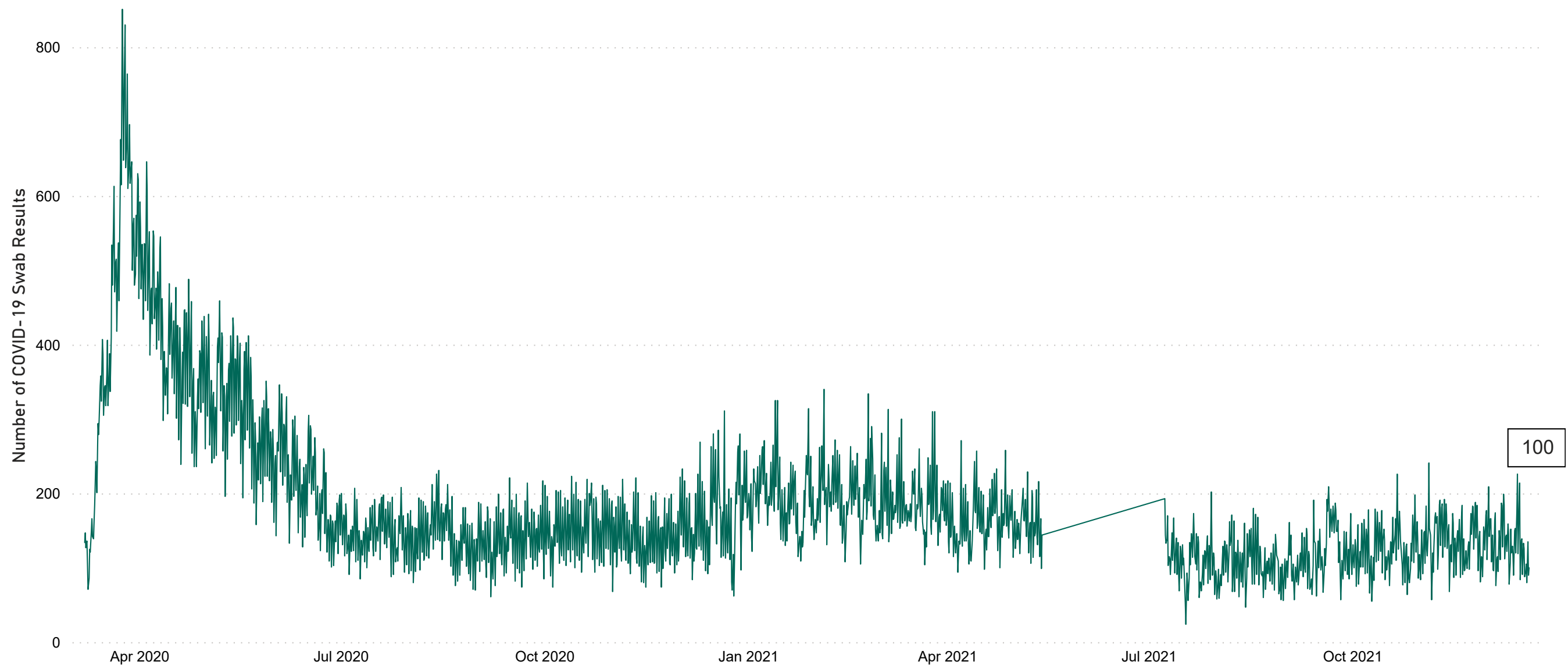
# Percentage Variance at 8am of Confirmed COVID-19 cases Admitted Across 29 sites compared to the previous day

% Variance at 8am of confirmed COVID-19 cases admitted across 29 sites to the previous day



# Number of Suspected COVID-19 Swab Results Awaited Across 29 acute sites as at 19/12/2021

Number of COVID-19 Swab Results Awaited at 0800hrs, 1400hrs and 2000hrs

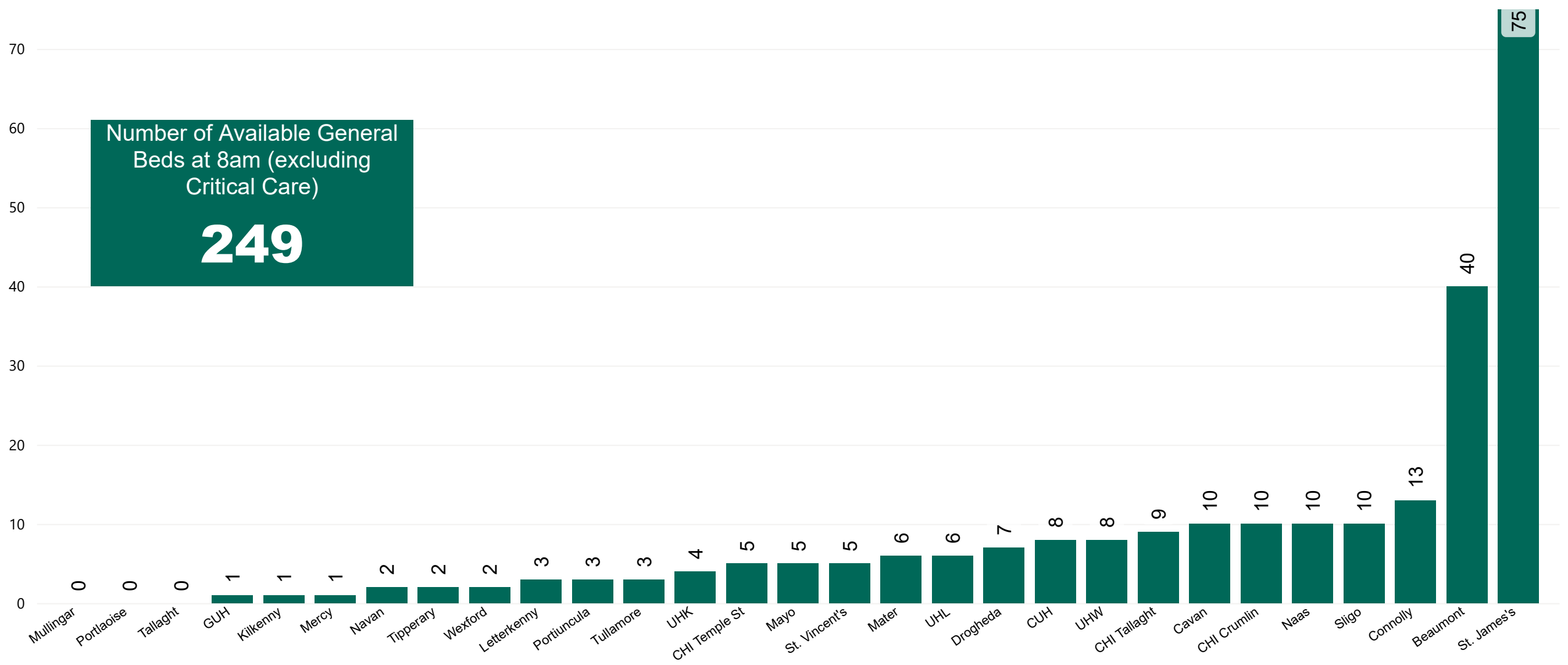


**Source:** SBAR Portal **Note:** There is no suspected C-19 data available from 14/05/2021 to 07/07/2021 due to the impacts of the cyber-attack.



# Number of Available General Beds on 19/12/2021

Number of Available General Beds



# Number of ICU/HDU Beds Available on 19/12/2021

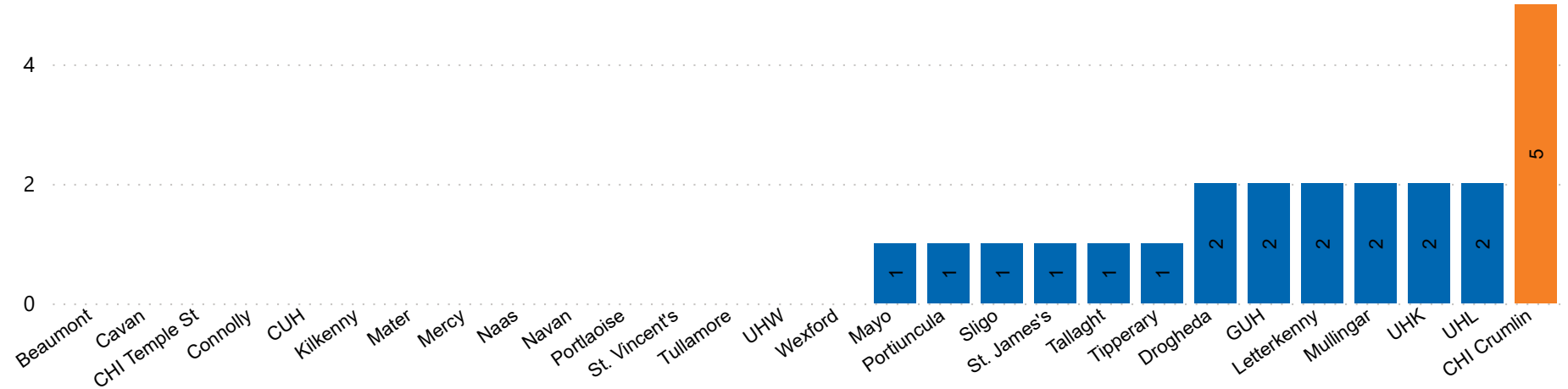
Number of Available ICU/HDU Beds at 10:30



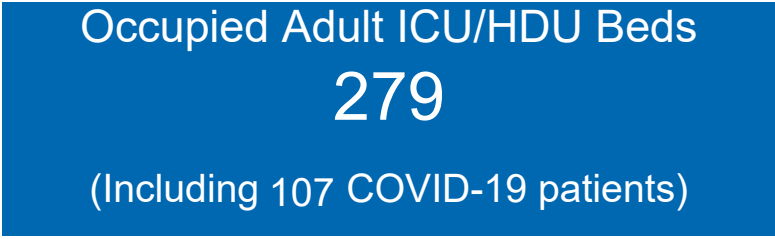
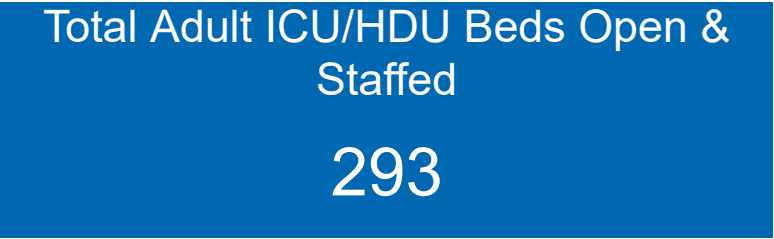
\*Due to the dynamic nature of reporting, available beds may differ depending on capacity and reserved status at individual sites for critical care beds. Furthermore, some of the available beds may be specialist beds, not available for admission of general ICU patients.

Available ICU/HDU Beds

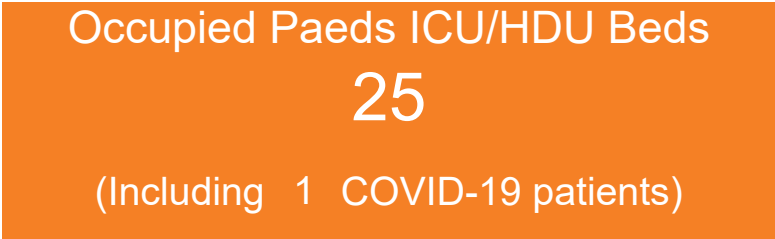
● Adult Public ● Paediatric



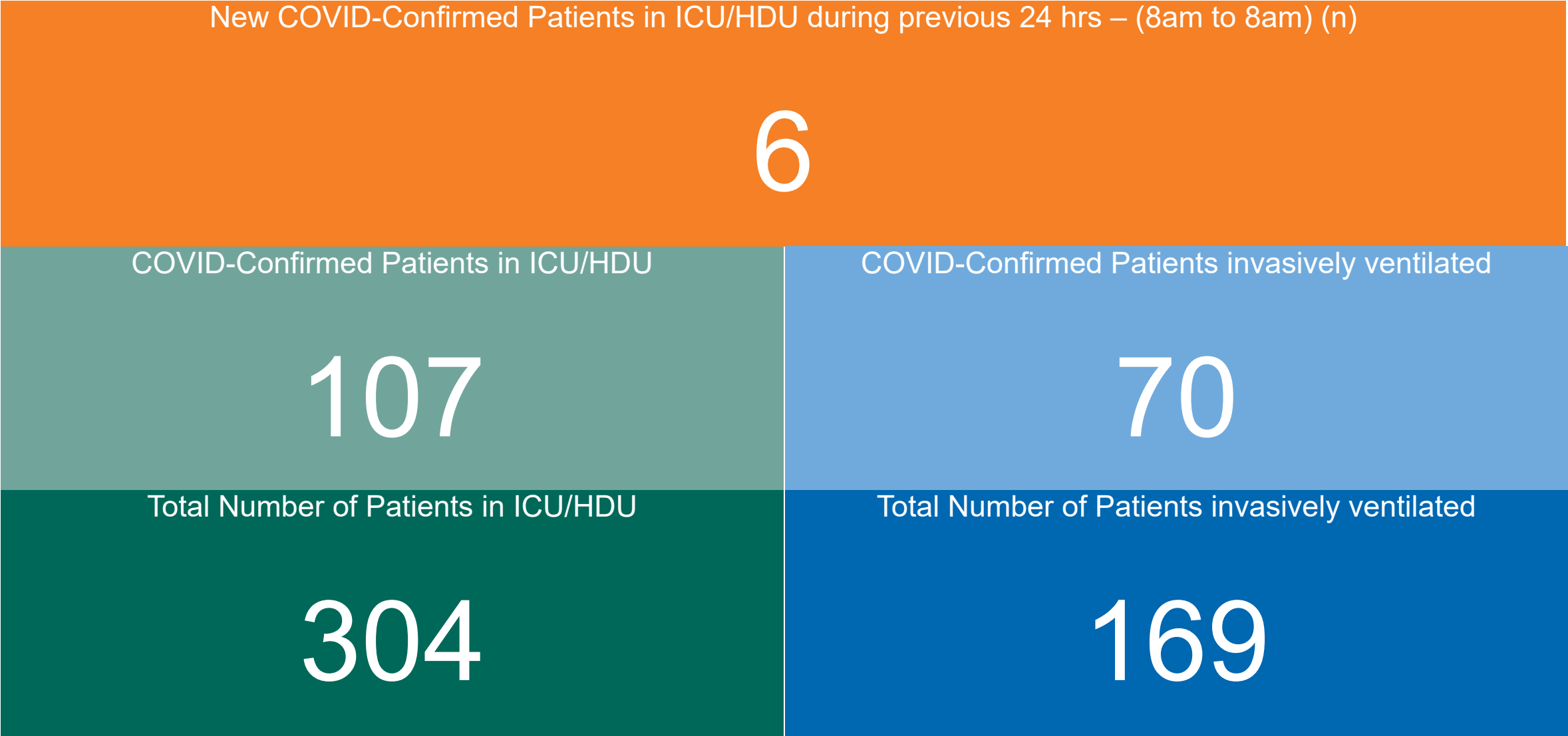
## ADULT



## PAEDS

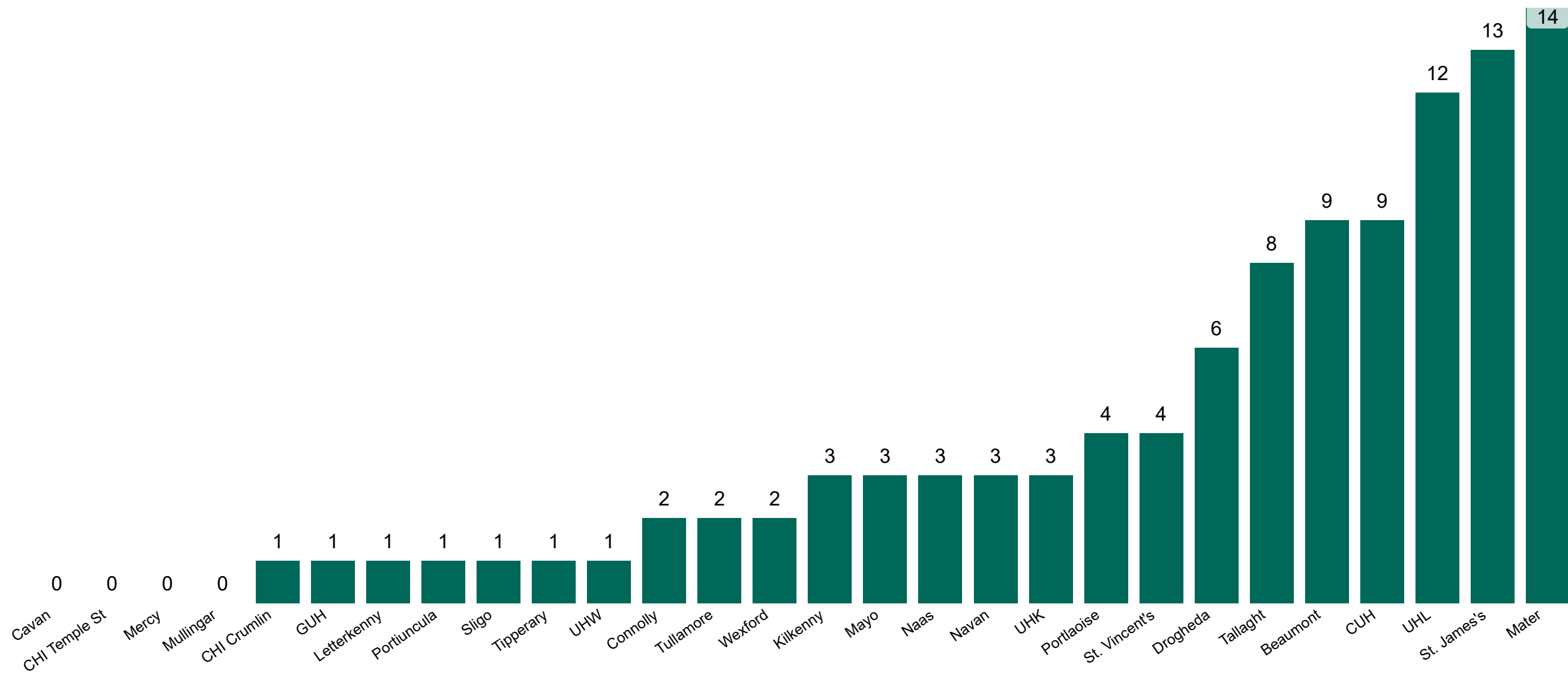


# ICU/HDU Summary as at 19/12/2021 10:30



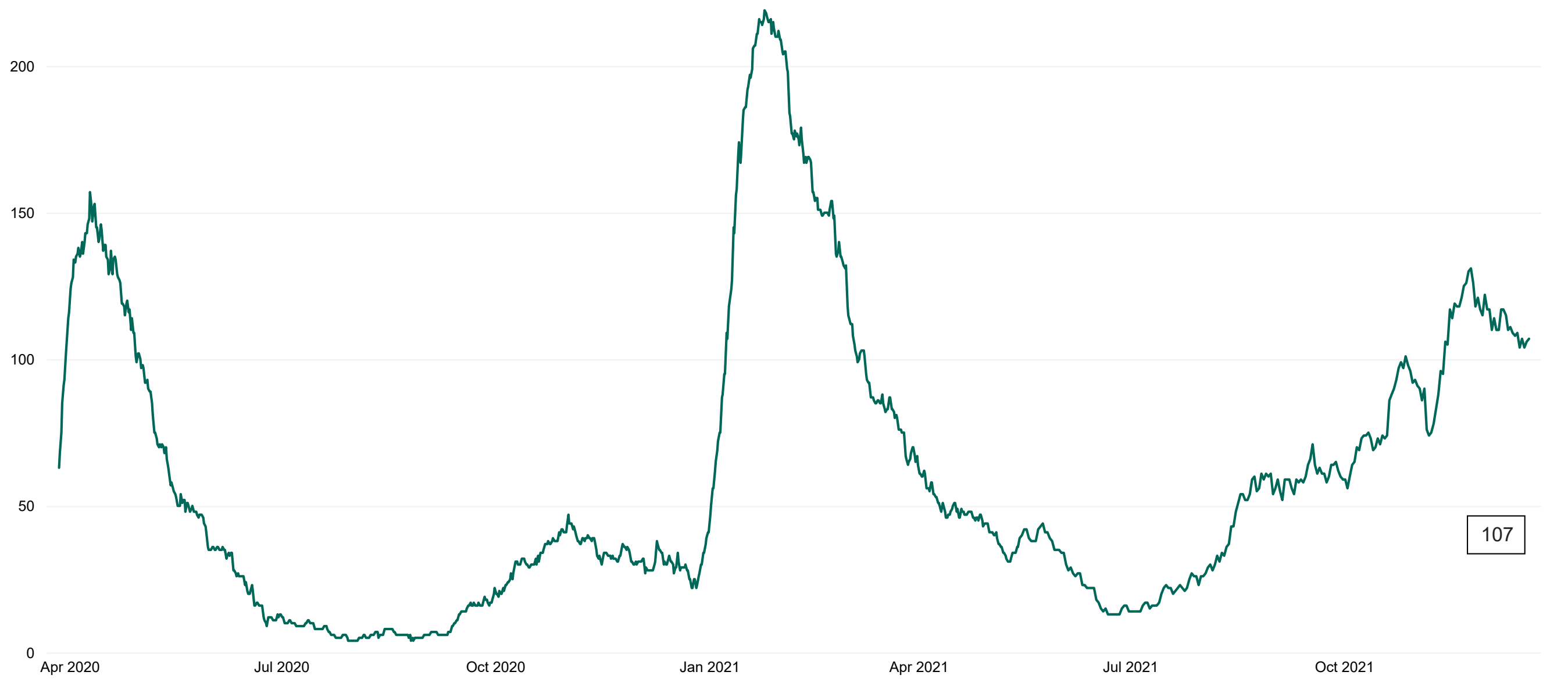
# Confirmed COVID-19 Cases in ICU/HDU

Confirmed COVID-19 Cases in ICU/HDU 19/12/2021



# Confirmed COVID-19 Cases in ICU/HDU

Confirmed COVID-19 Cases in ICU/HDU from 27/03/2020 to 19/12/2021



**DOCUMENT ENDS**

