

COVID-19 Daily Operations Update

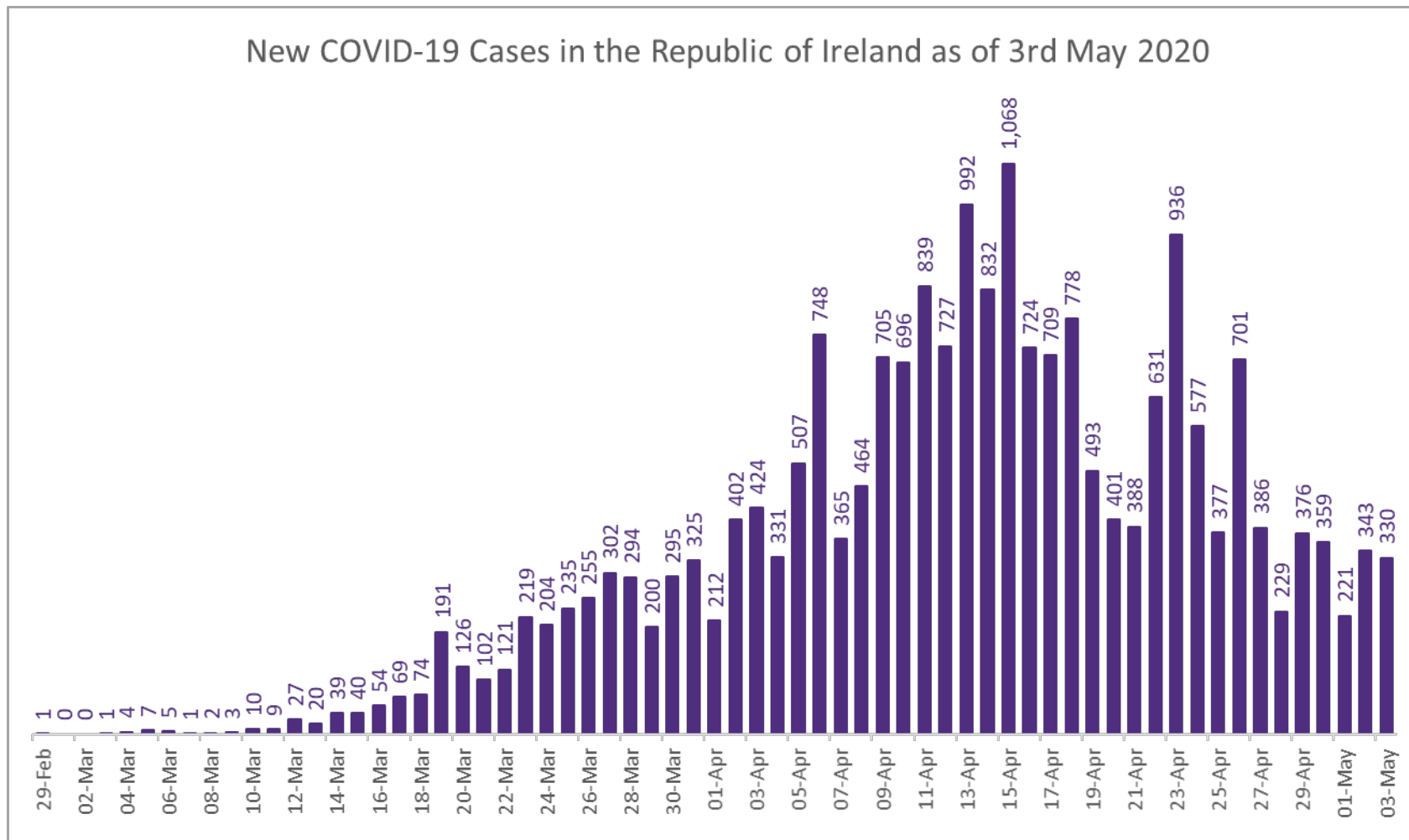
Acute Hospitals

**Performance Management and
Improvement Unit**

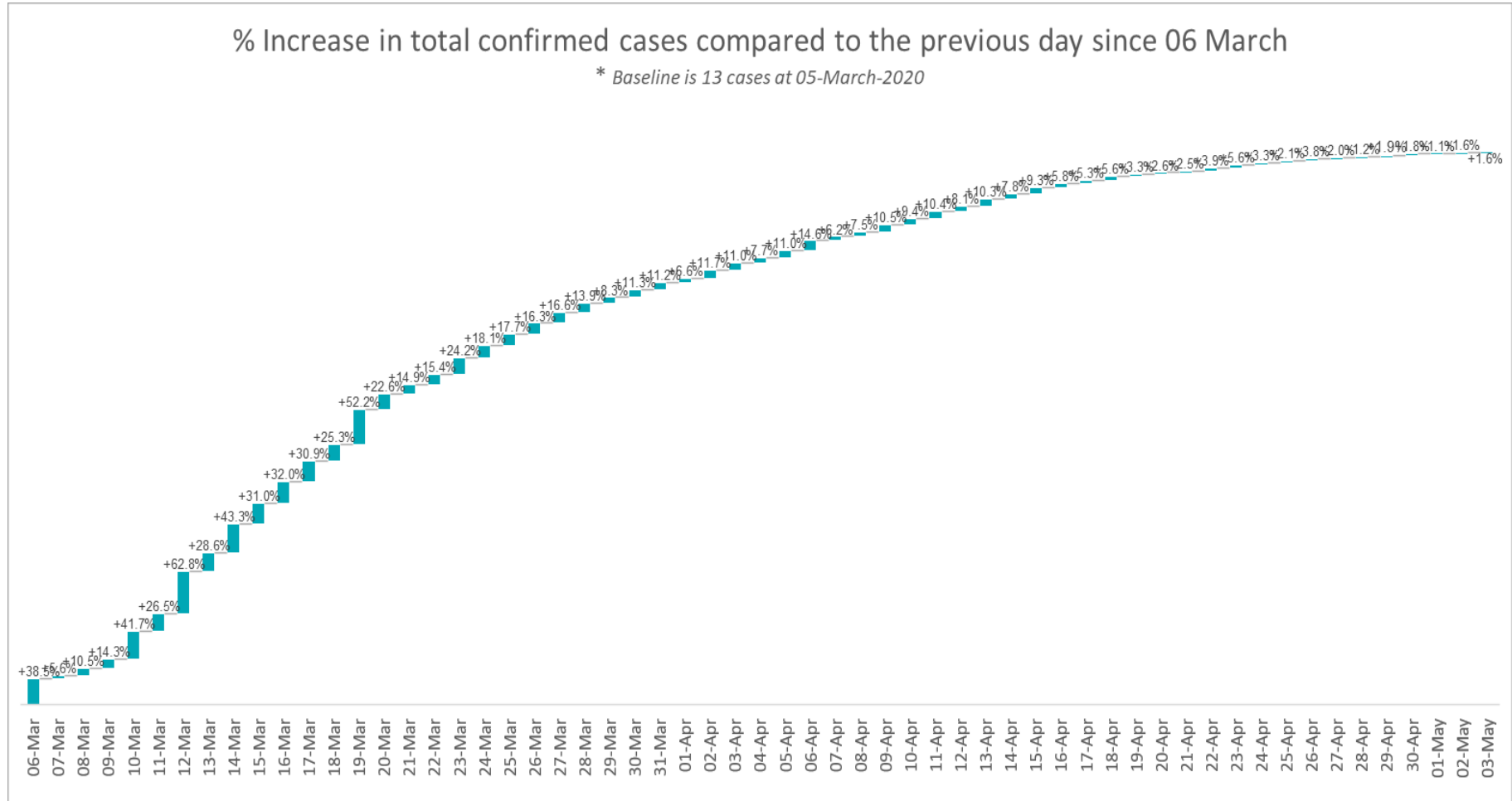
2000hrs Sunday 3rd May 2020



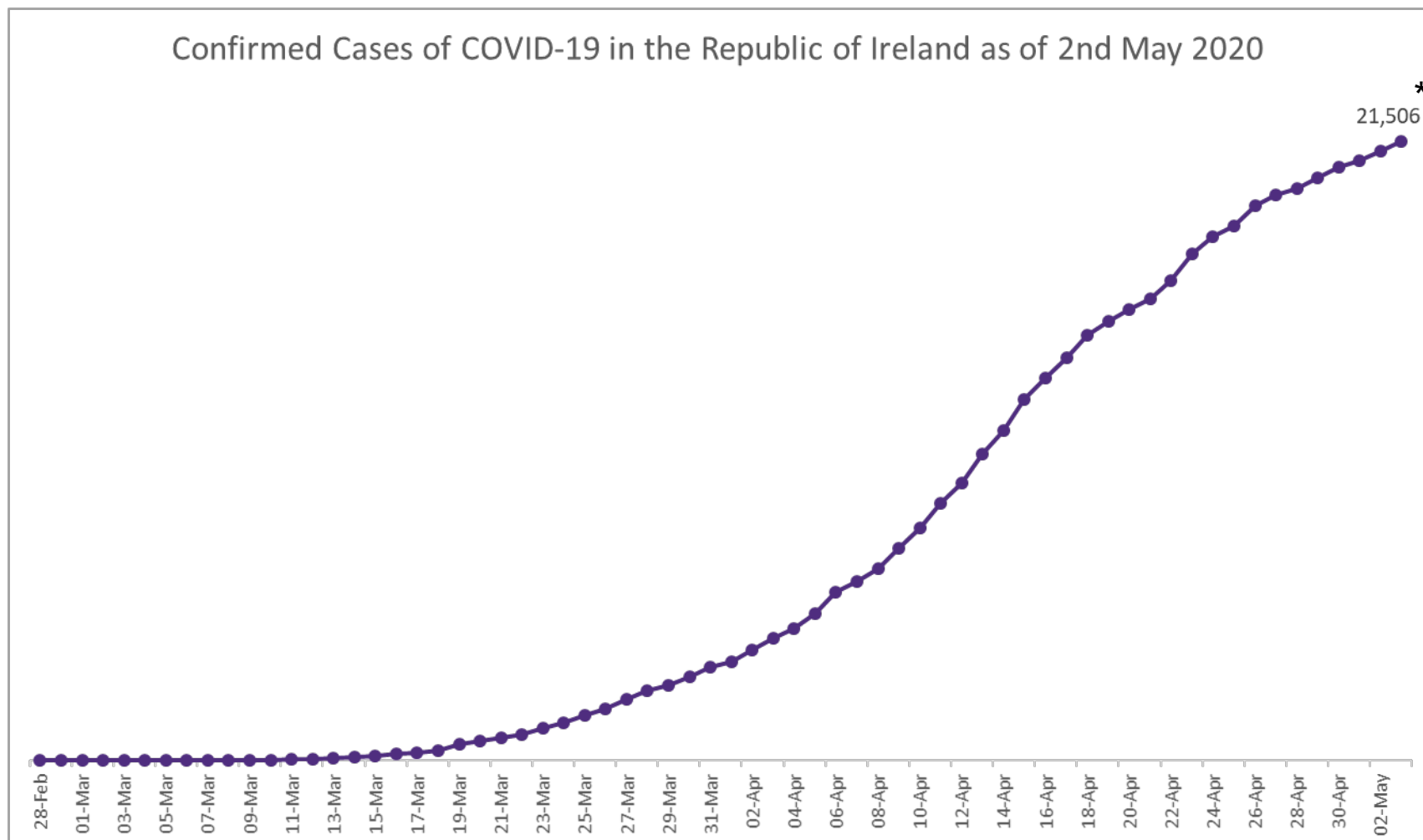
New Confirmed COVID-19 Cases in the Republic of Ireland as of 3rd May 2020



Percentage Increase compared to previous day since 06.03.2020



Confirmed Cases of COVID-19 in the Republic of Ireland as at 3rd May 2020



***Note: Department of Health total of 21,176 reported on Sunday May 3rd 2020 does not include the 330 new cases recorded.**

Source: Department of Health 2020, < <https://www.gov.ie/en/news/7e0924-latest-updates-on-covid-19-coronavirus/> >

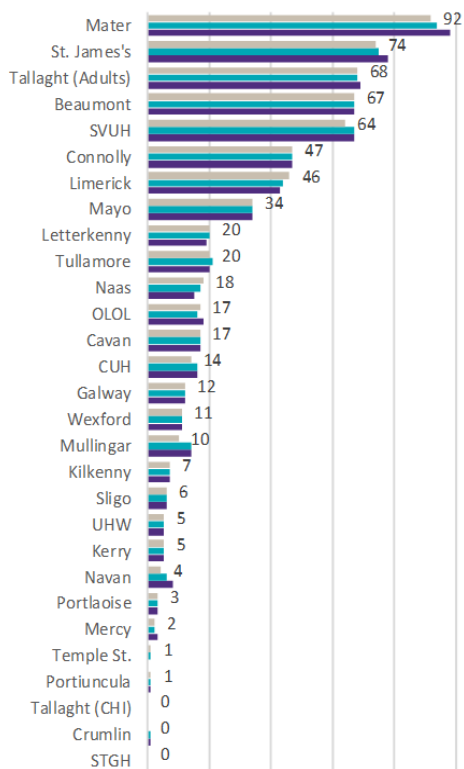
2000hrs, 3rd May 2020: COVID-19 Dashboard by Acute Hospital

8pm COVID-19 Update

Total Confirmed COVID-19 Cases

8am	2pm	8pm
684	677	665

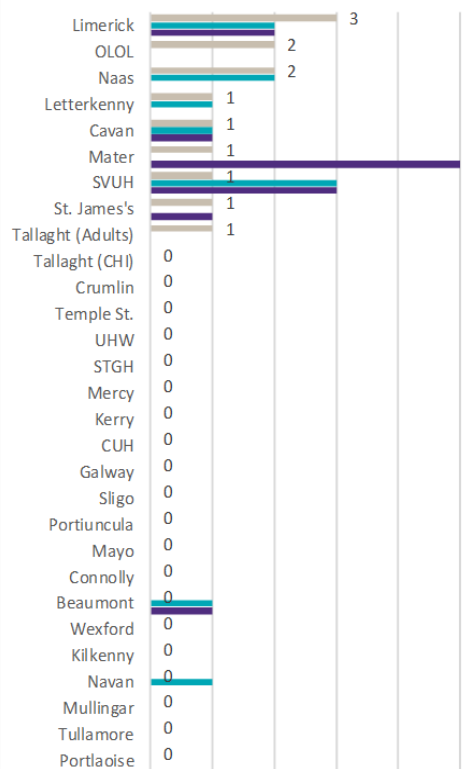
Number of Confirmed COVID-19 Cases on Site



Total Confirmed COVID-19 Cases (Past 24 Hours)

8am	2pm	8pm
13	11	13

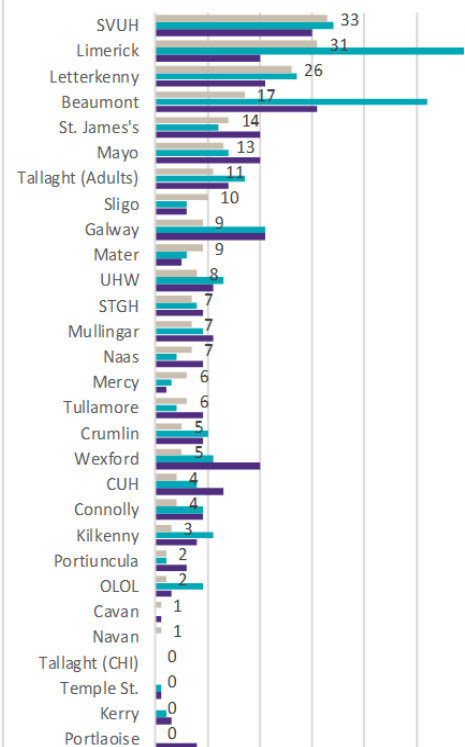
Total Confirmed COVID-19 Cases on Site (Past 24 Hours)



Current Number of COVID-19 Suspected Cases

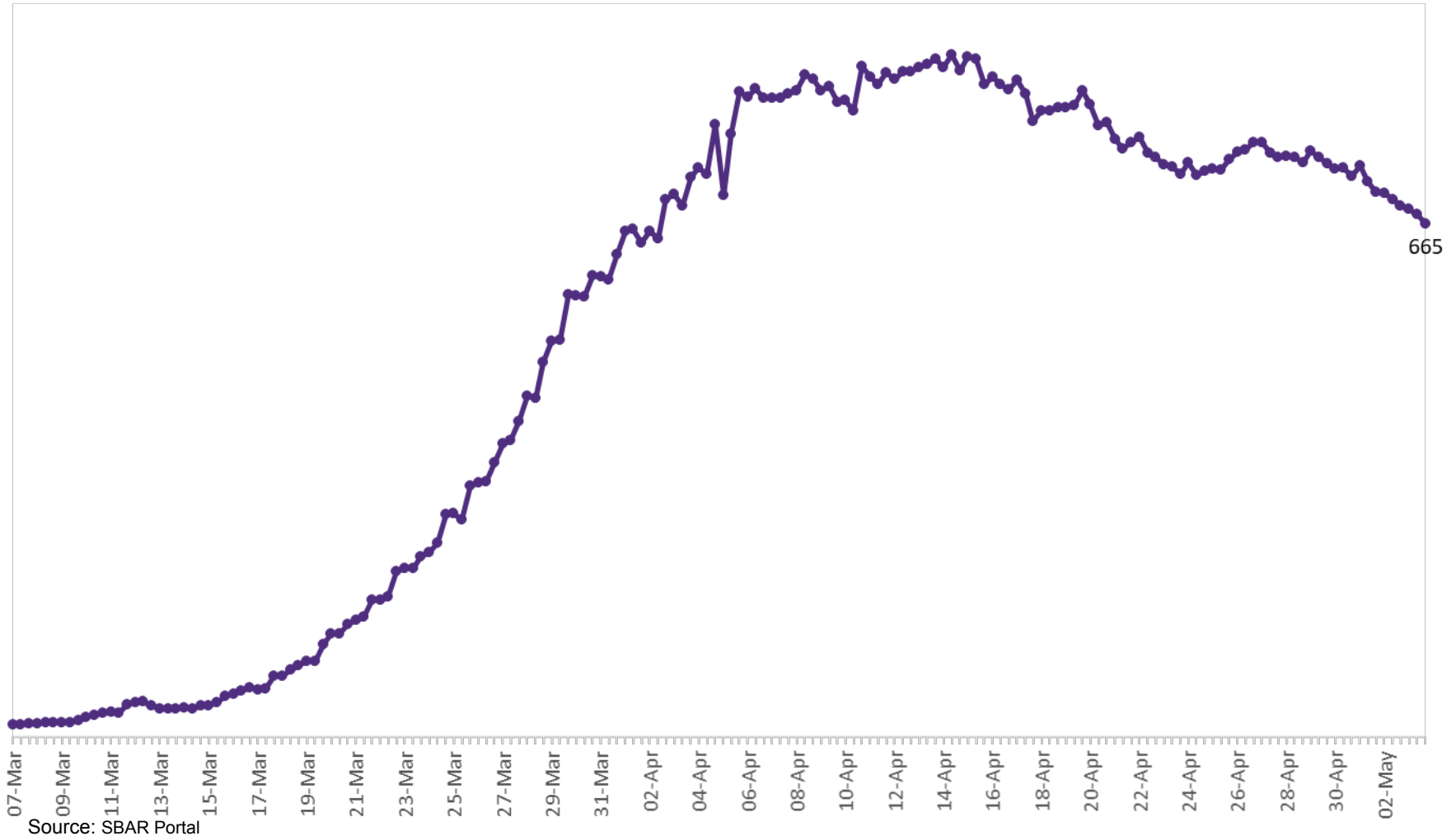
8am	2pm	8pm
320	352	241

Current Number of COVID-19 Suspected Cases Awaiting Results



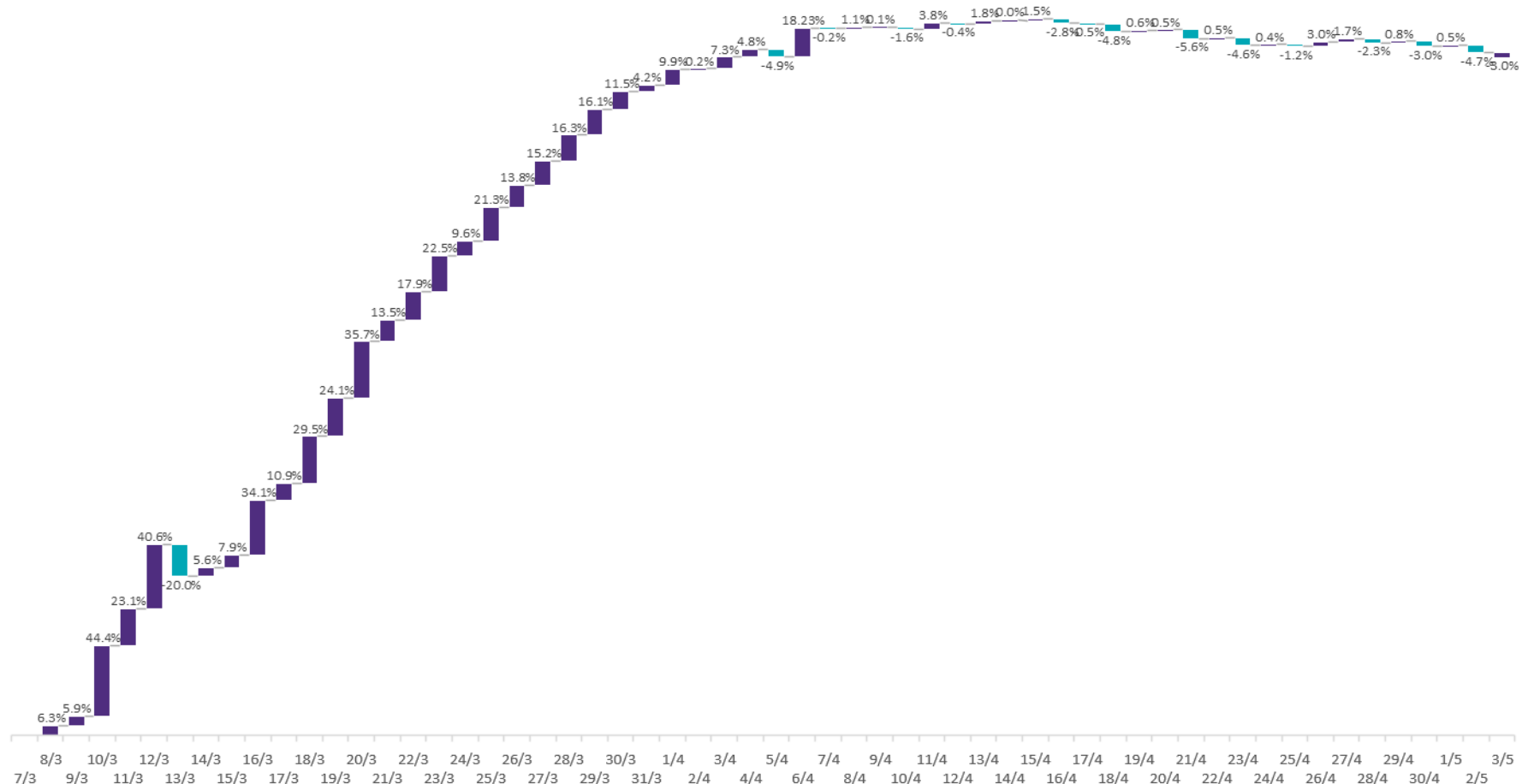
Number of Confirmed COVID-19 cases admitted across 29 acute sites (including CHI)

Number of Confirmed COVID-19 Cases Admitted on Site at 0800hrs, 1400hrs and 2000hrs



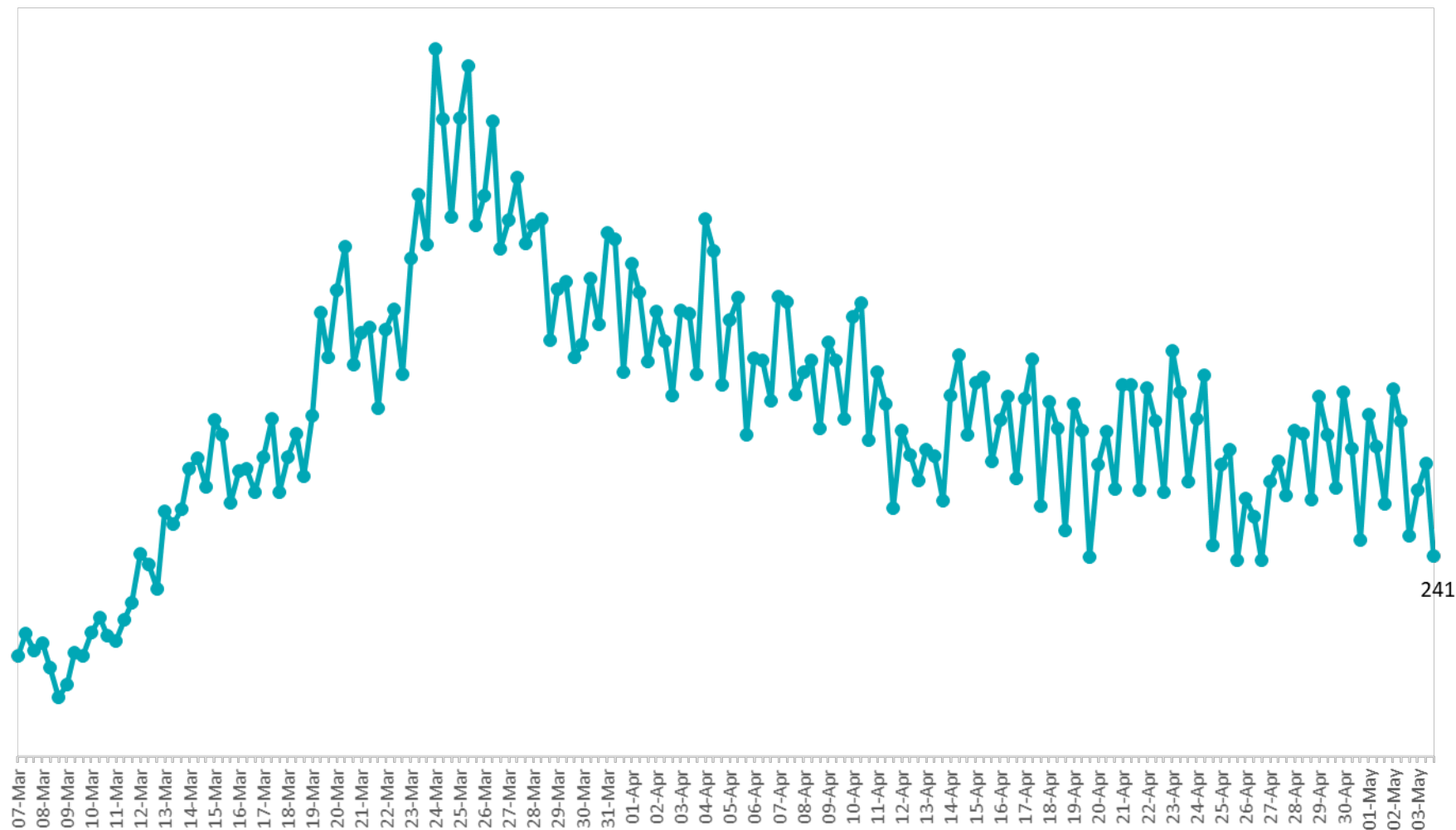
Percentage increase at 8am of Confirmed COVID-19 cases Admitted Across 29 sites compared to the previous day

% Increase at 8am of confirmed COVID-19 cases admitted across 29 sites compared to the previous day



Number of Suspected COVID-19 Swab Results Awaited Across 29 acute sites as at 03/05/2020

Number of COVID-19 Swab Results Awaited at 0800hrs, 1400hrs and 2000hrs



Source: SBAR Portal

Number of Vacant Beds and Critical Beds Available on 03/05/2020

(Note HSE COVID-19 Surge plan includes significant additional Critical Care Beds in addition to those indicated below)

Total Critical Care Beds
542

Total Critical Care Beds
Open & Staffed
415

Occupied Critical Care Beds
271
(Including 93 COVID 19+ patients)

Available Critical Care Beds
143*

*Due to the dynamic nature of reporting, available beds may differ depending on capacity and reserved status at individual sites for critical care beds

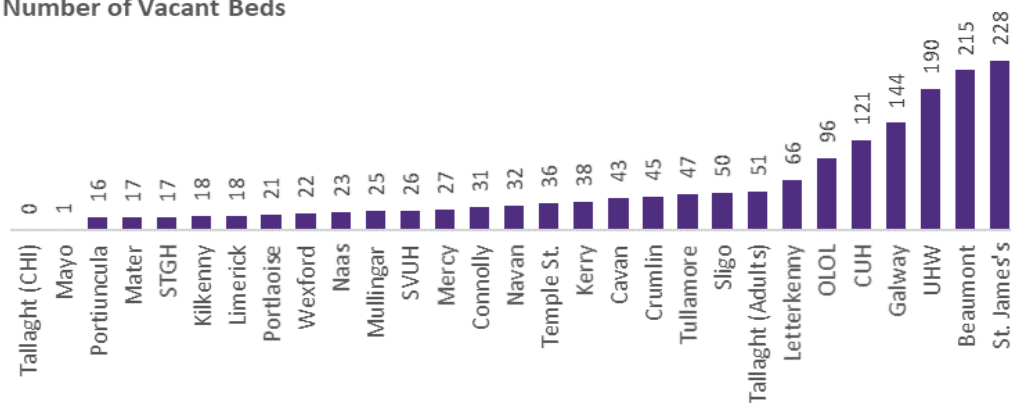
1,664

Number of Vacant General beds at
8am (excluding critical care)

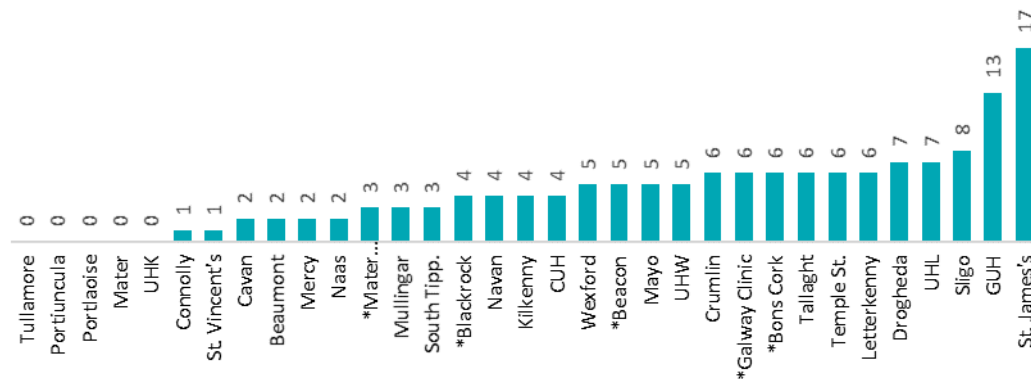
143

Number of Vacant Critical Care Beds at
1830hrs

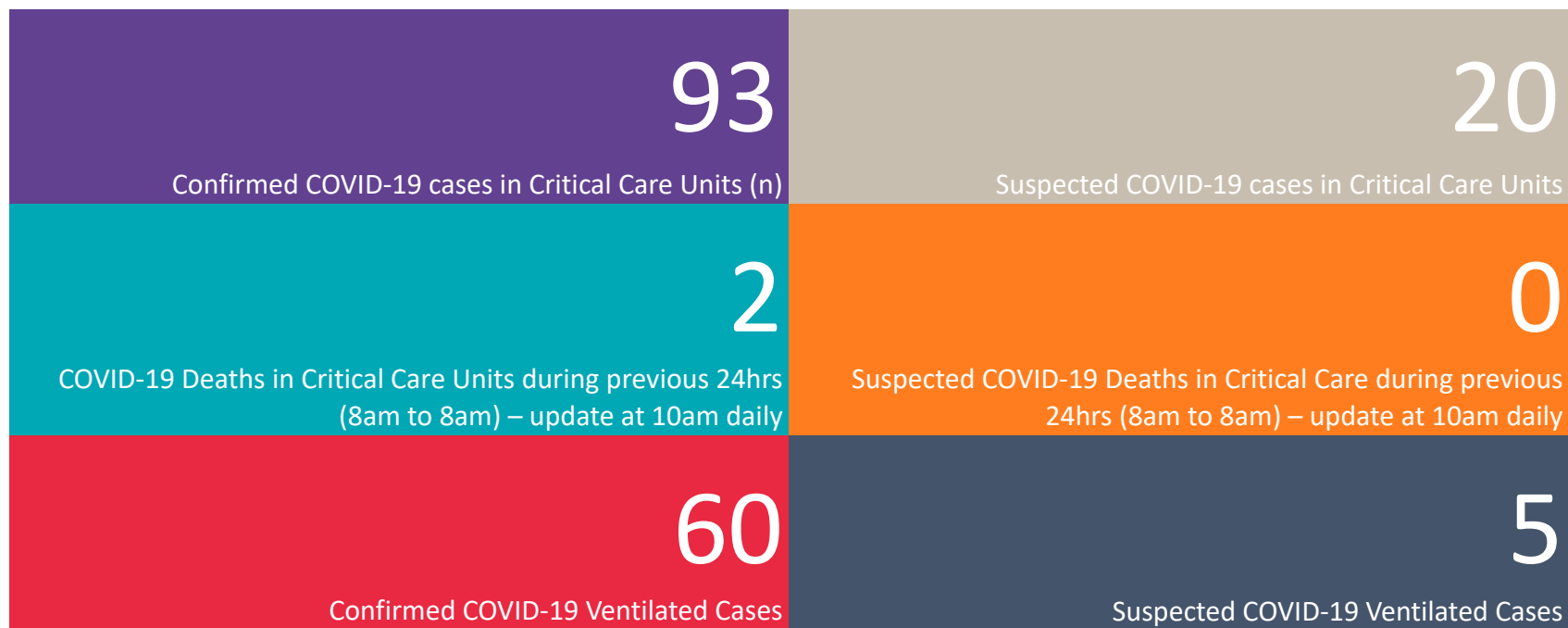
Number of Vacant Beds



Vacant Critical Care Beds

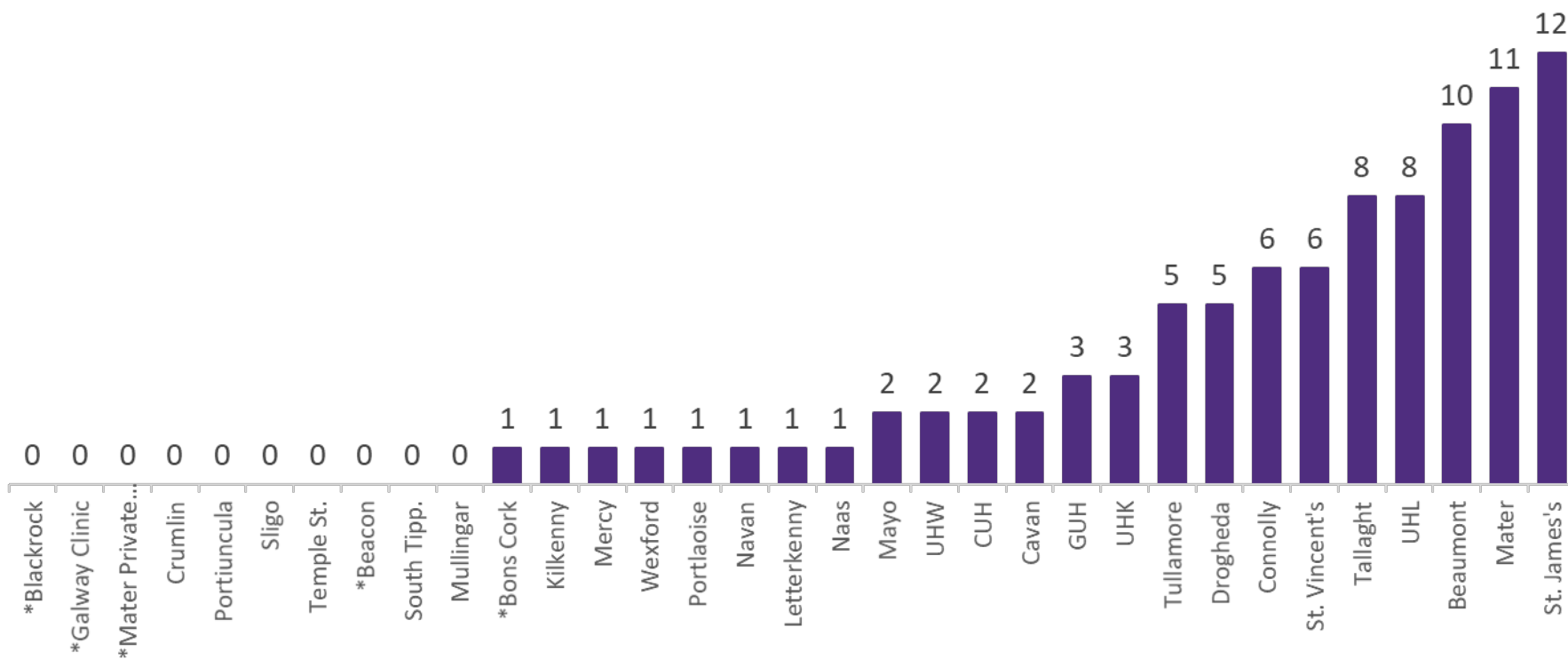


Critical Care Summary as at 1830hrs, 3rd May 2020



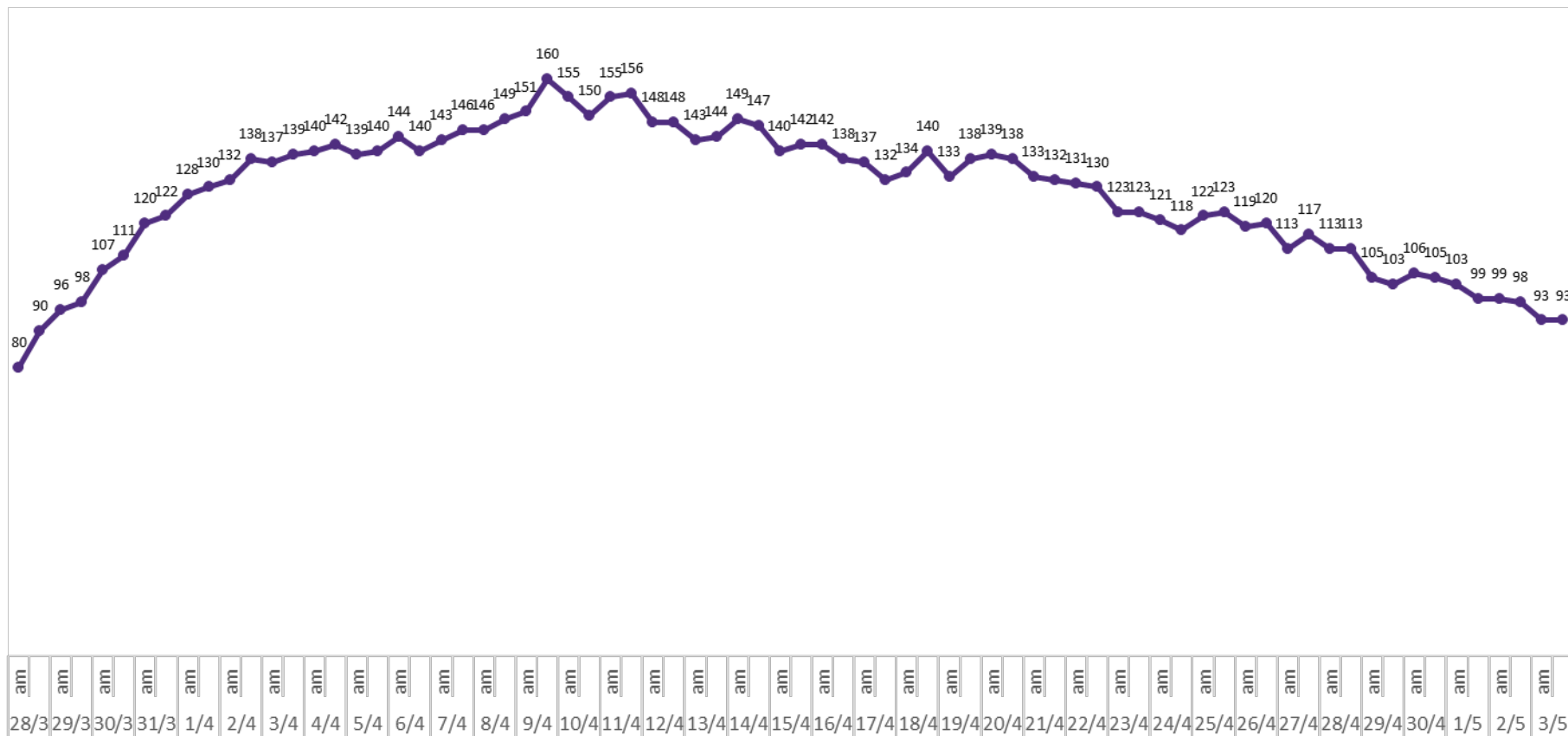
Confirmed COVID-19 Cases in Critical Care Units

Confirmed Covid-19 Cases in Critical Care Units (03/05/2020)



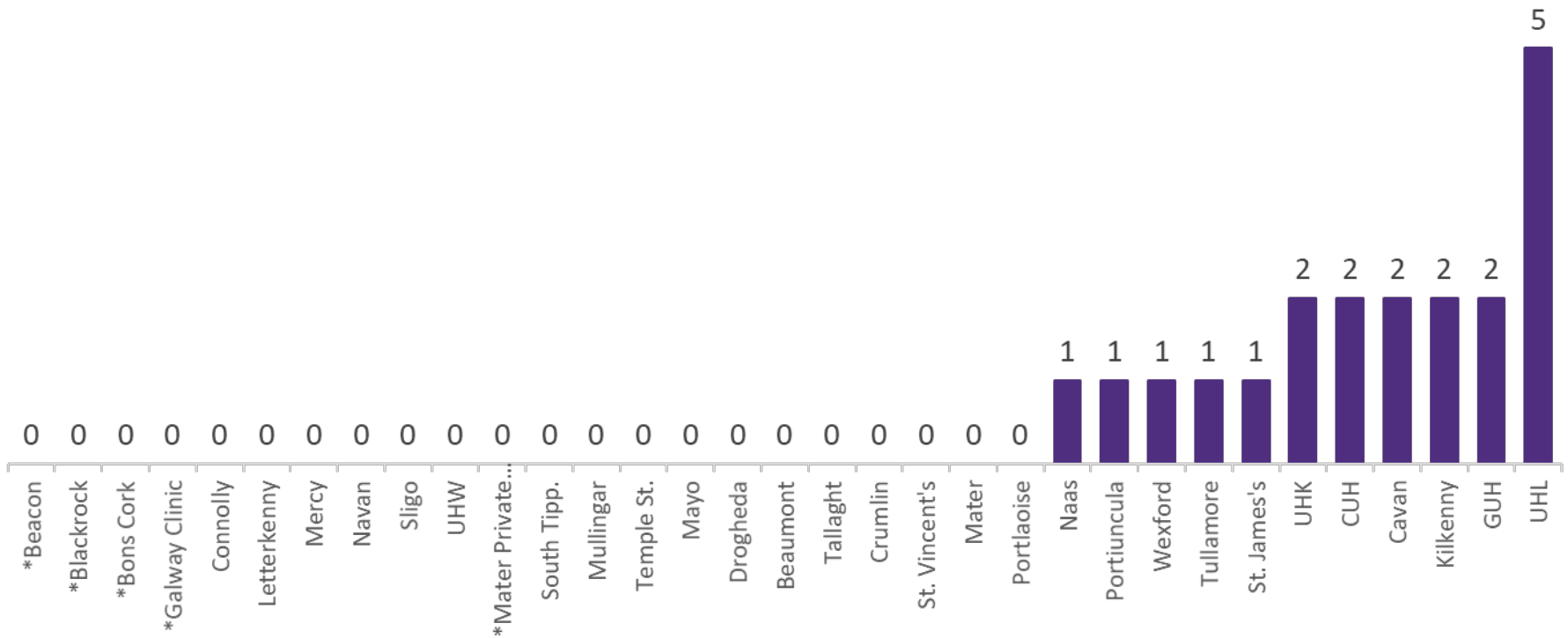
Confirmed COVID-19 Cases in Critical Care Units

Confirmed Covid-19 Cases in Critical Care Units from 28/03/2020 to 03/05/2020



Suspected COVID-19 Cases in Critical Care Units

Suspected Covid-19 Cases in Critical Care Units (03/05/2020)



Suspected COVID-19 Cases in Critical Care Units

Suspected Covid-19 Cases in Critical Care Units from 31/03/2020 to 03/05/2020

