

HSE COVID-19 Test and Trace Briefing

12th of August, 2021

Testing Volumes and Turnaround Times

1

2

Test and Trace Trends

3

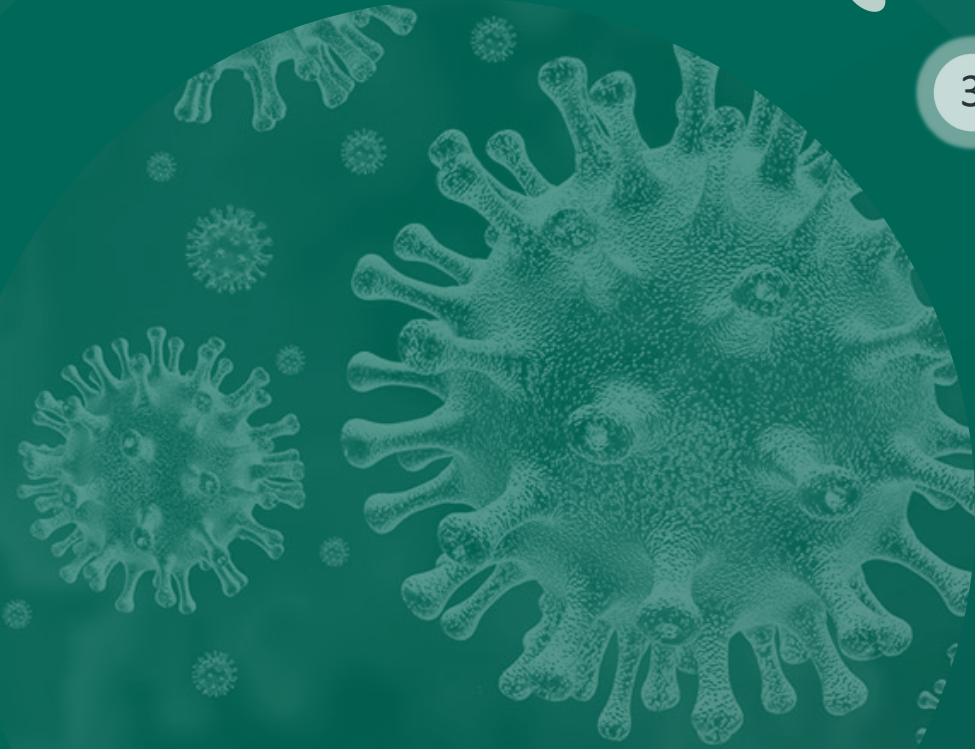
Testing Programmes

4

Education and Childcare

5

Recruitment





Test and Trace Headlines



1 day

Community - median end to end TAT for a not detected result



2.1 days

Community - median end to end for a detected result



c. 131,701

Total number of swabs taken last week



c. 132,166

Total number of laboratory tests last week



c. 21,266

Calls made to close contacts last week

Note: The above TaT and volume metrics refer to the seven day date range from 4th– 10th August.



Key messages from Testing and Tracing

1. We are continuing to see a strong demand for testing across the country. Demand has increased by 12% on last week although still within capacity. 92% of people can get a test in less than 24 hours from request.
2. Community site positivity stands at 14%, with some sites standing at 30%
3. We launched a new “List your contacts portal this week”. This enables faster tracing, quicker notification to close contacts and shorter calls with positive cases.
4. We have just under 1,000 staff working on contact tracing.
5. We made over 11,000 calls to index cases and 28,000 to close contacts. Both have increased by 22% and 16% respectively
6. 45% of close contacts identified are now fully vaccinated, a further 11% have had two doses but not yet considered fully vaccinated
7. Close contact positivity was 16.4% this week
8. This week, we have pop up testing sites in Dublin (Blanchardstown, Tallaght & Sandyford), Donegal (Buncrana), Athlone and Dundalk.
9. New pilot antigen studies have commenced. Self testing has begun among staff and students in those further education institutions which are part of this pilot. Testing has also begun in early years settings amongst the staff. There have been no detected cases so far.
10. It is really important that when people go for testing and get a positive COVID 19 result, that they then engage with the HSE’s Contact Tracing teams.
11. We are again urging people not to attend social gatherings, sports training, or attend their place of work if they have symptoms of COVID 19 – stay at home, get a test, you may have COVID 19 and by taking these measures you are preventing the onward spread in your families, workplaces or communities.

A circular inset on the left side of the slide shows a microscopic view of several coronavirus particles. These particles are spherical with a textured surface and numerous spike-like projections (spikes) extending from them. They are set against a dark, slightly blurred background within the circle.

1. Testing Volumes and Turnaround Times



Test and Trace Volumes

The following metrics and turnaround times refer to the seven days from 4th – 10th August.



Total Community Referrals

- There were **c.103,304 community referrals** over the seven day period.
- This figure includes **3,131 International travel referrals** (↓ **2%** in comparison to last week) and **36,047 referrals** from the **self-referral portal** (↑ **12%** in comparison to last week), the remainder relate to GP and close contact referrals.
- Overall, this weekly total has **increased** by **12%** in comparison to the same time-frame the previous week (28th July – 3rd August; c.92,326 total referrals).



Total Swabs Completed

- During this time period, there were c. **131,701** swabs were completed.



Laboratory Tests and Detected Rate

- During this time period, there was c.**132,166** lab tests reported in community, private and acute settings over the past week.
- The average detected rate over the past week is **approximately 10.6% - Community and Acute and Serial blended. Community on its own is 13.5%**



Contact Tracing

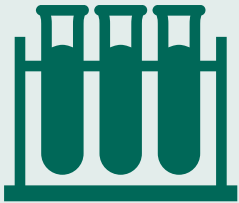
- Over the last 7 days, of those tested with close contacts, the average number **close contacts was 3.5 per person**.
- From 4th – 10th August, a total of 10,365 calls were completed to inform individuals of their detected COVID-19 test result.
- From 4th – 10th August, contact tracing was completed for c. 9,775 individuals that had a confirmed COVID-19 case
- In addition, c. 21,266 calls were made to close contacts.



Test and Trace Turnaround Times

The following metrics and turnaround times refer to the 7 day date range from 4th – 10th August.

23 hrs



Combined median time from
swab to lab result in
community and acute setting

13.1 hrs



Median time taken to
complete contact tracing
calls

1 day



Median end to end
turnaround time for a **not**
detected result

2.1 days



Median end to end
turnaround time for a
detected result

A circular inset on the left side of the slide shows a microscopic view of several coronavirus particles. The particles are spherical with a textured surface and numerous spike-like projections (spikes) extending from them. They are set against a dark, slightly blurred background within the circle.

2. Testing and Trace Trends

Total Community Referrals

- From the 4th – 10th August, there were **c.103,304** Community Referrals (including walk-ins, international travel and self referrals)
- This weekly total has **increased by 12%** in comparison to the same time-period last week (28th July – 3rd August; c.92,326 total referrals)
- The graph to the right shows a weekly breakdown **of total community referrals** over the past 5 weeks.

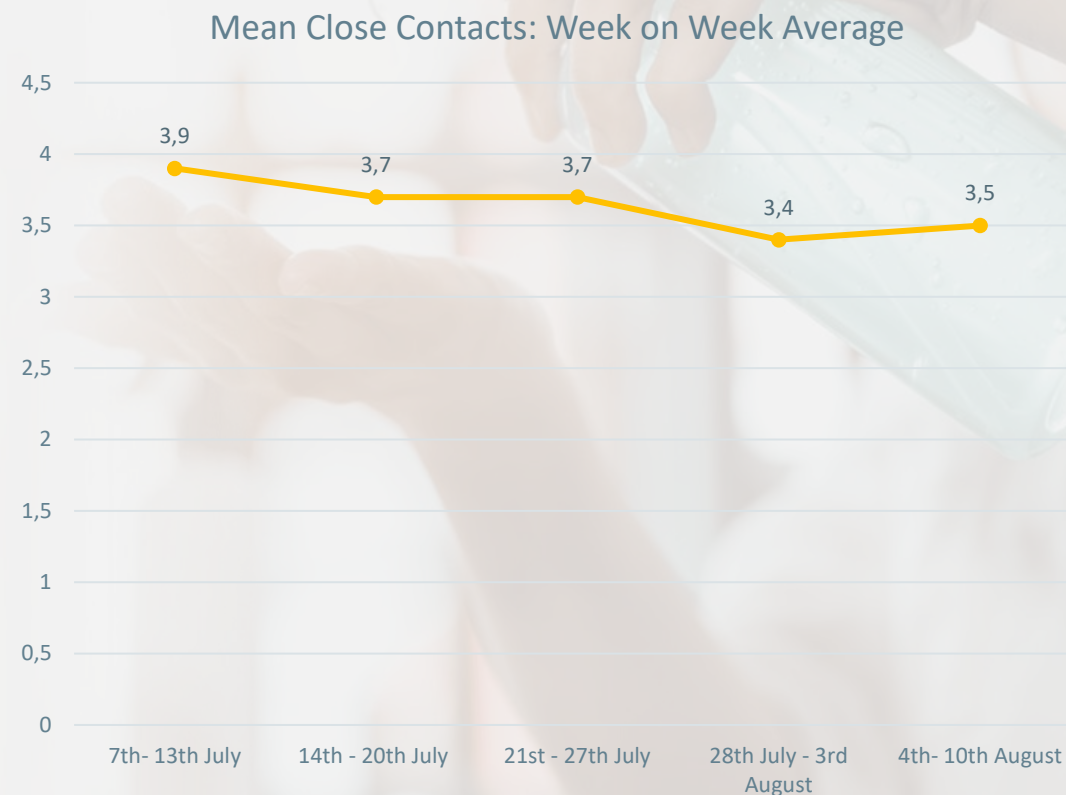




Close Contacts Trend

3.5

Over the last 7 days, of those tested with at least one close contact, the mean number of close contacts per person was **3.5**



A circular inset on the left side of the slide shows a microscopic view of several coronavirus particles. These particles are spherical with a textured surface and numerous spike-like projections (spikes) extending from them. They are set against a dark, slightly blurred background within the circle.

3. Testing Programmes



Serial Testing in Nursing Homes

In Cycle 14 (Commenced 19th July);



217 facilities have been tested

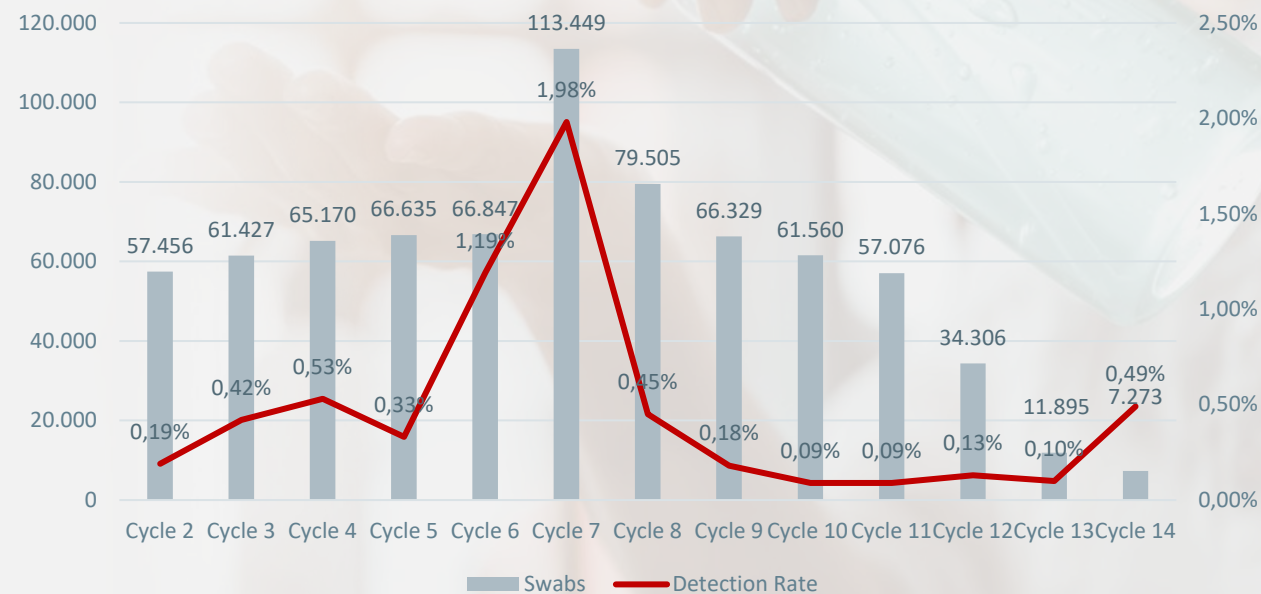


7,273 tests have been completed



36 detected cases identified
(0.49% detected rate)

Swabs completed and detection rate per cycle in Nursing Homes





Serial Testing in Mental Health Facilities

In Cycle 7 (Commenced 23rd July);



4 facilities have been tested

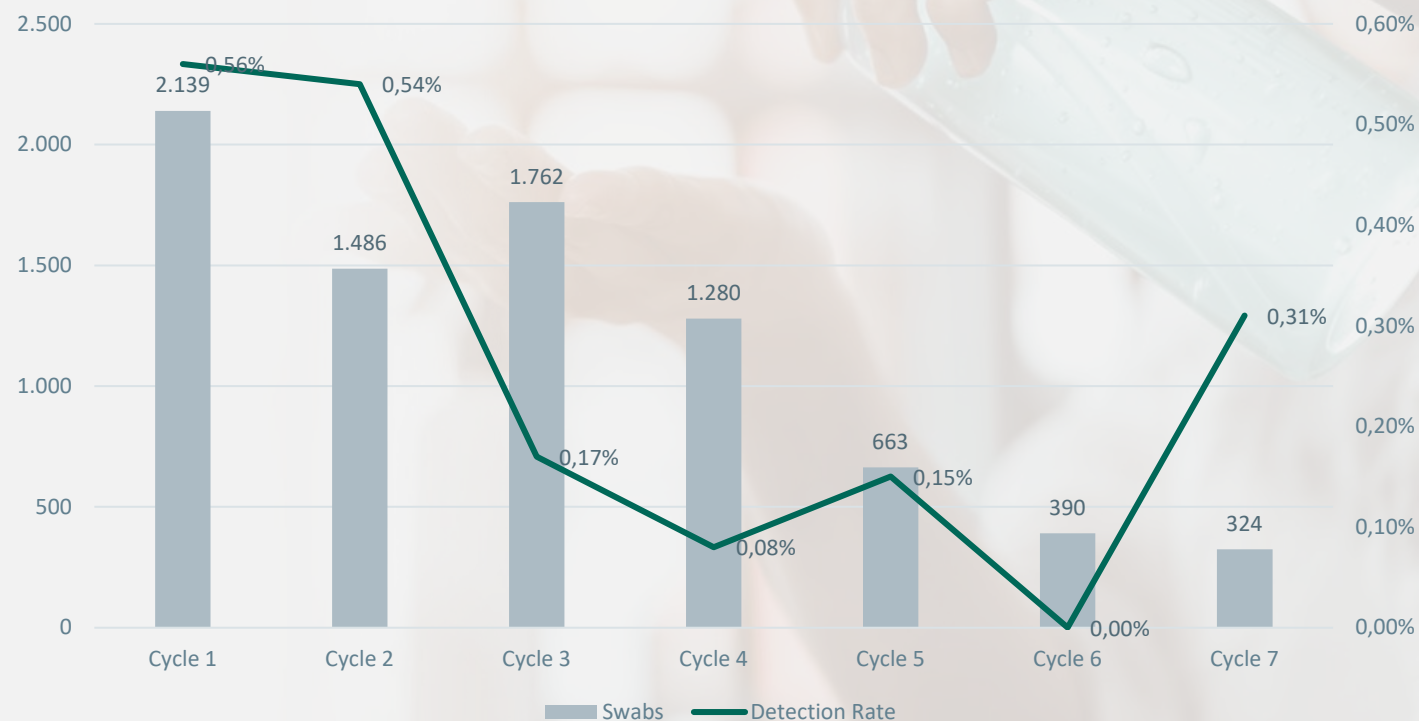


324 tests have been completed



1 detected case identified
(0.31% detected rate)

Swabs completed and detection rate per cycle in Mental Health Facilities





Serial Testing in Food Production Facilities

In Cycle 12 (Commenced 26th July);



49 facilities have been tested

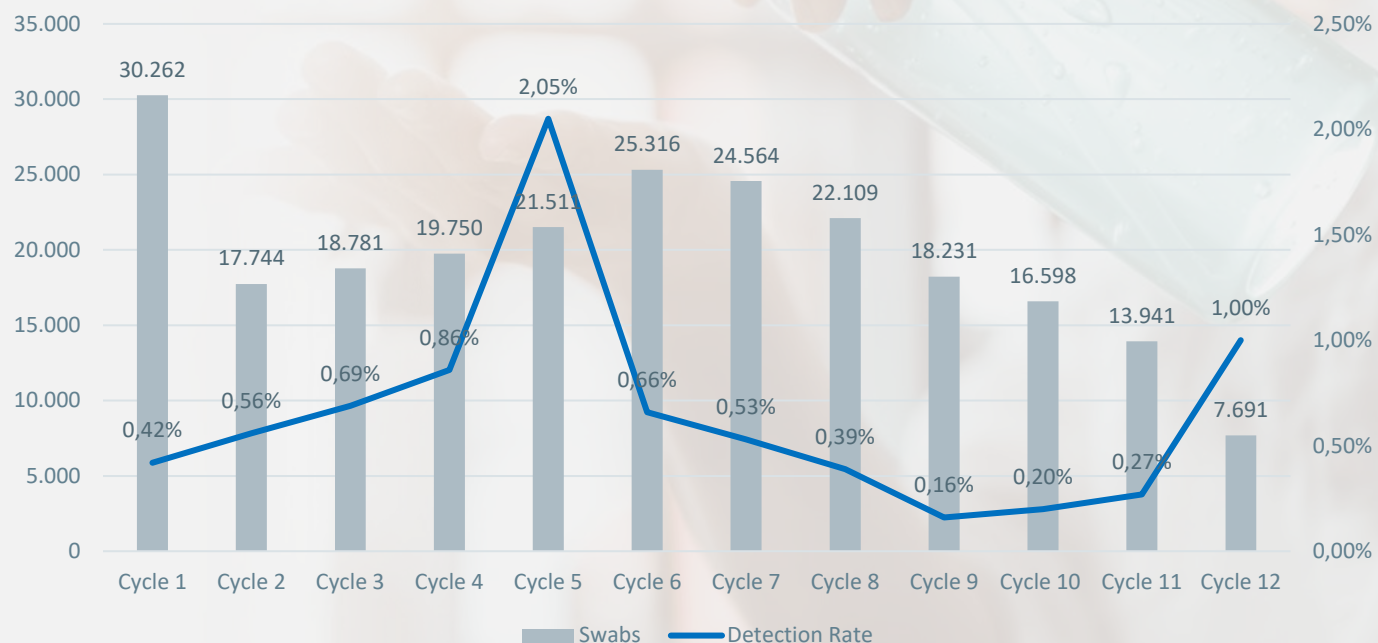


7,691 tests have been completed



77 detected cases identified
(1.00% detected rate)

Swabs completed and detection rate per cycle in Food Production Facilities





Mandatory Hotel Quarantine Testing

- All passengers arriving into Ireland from designated states are required to pre-book accommodation in a designated quarantine facility.
- Testing resources have been made available in Quarantine Facilities since 26th March 2021, and are available on a daily basis to accommodate the testing of all new arrivals.
- The scope of testing includes:
 - Testing of passengers arriving into Ireland from Category 2 Countries on Day 0 and Day 10
 - Testing of passengers arriving into Ireland from Category 1 Countries that have not been able to produce a negative result
 - Testing of Quarantine Hotel Staff on a weekly basis

Total Hotel Quarantine Swabs as of August 3rd:

Hotel Staff

7,408 swabs complete

Quarantine Residents

16,281 swabs complete

Detected Cases To Date

457



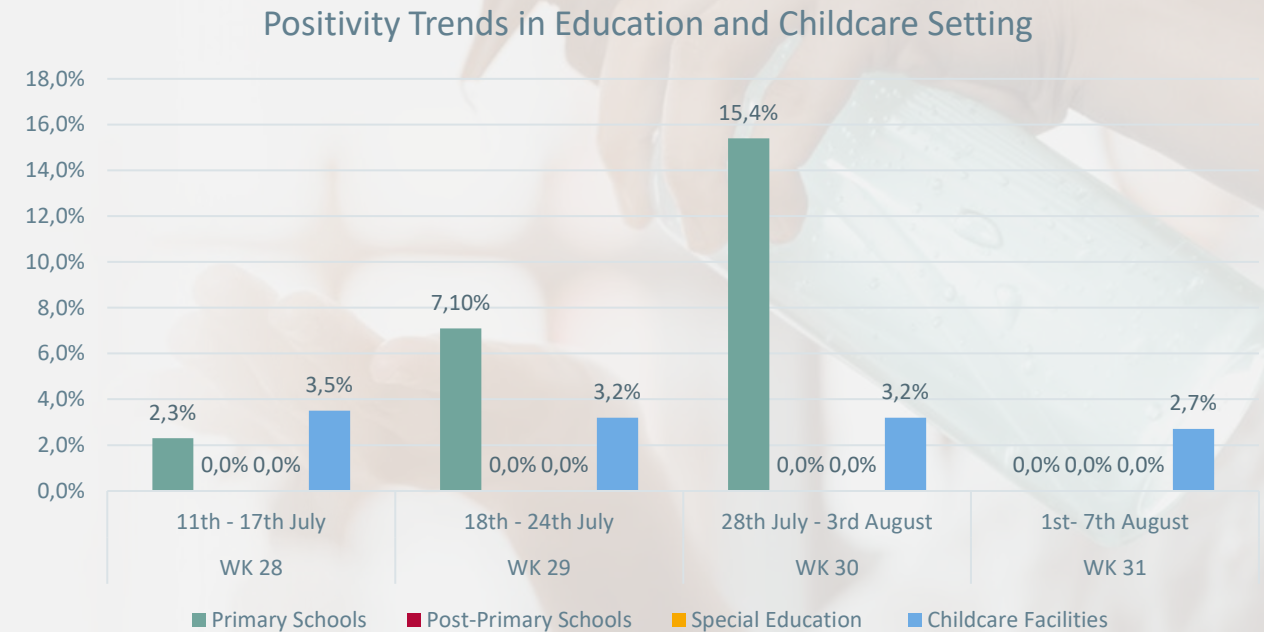
A large, semi-circular graphic on the left side of the slide. It contains a detailed, light-colored illustration of several coronavirus particles, showing their characteristic spherical shape and numerous spike-like projections (spikes) on their surface. The background within this semi-circle is a darker shade of teal, and the entire graphic is set against a larger, lighter teal circular backdrop.

4. Education and Childcare

Positivity Trend in Education and Childcare Settings

From the 1st – 7th August;

- There were no tests conducted in **special education, primary** or **post-primary school** settings
- **229** tests were completed in **29 childcare facilities** (**2.7%** positivity rate)



A circular inset image showing a microscopic view of coronavirus particles. The particles are spherical with a textured surface and numerous protruding spike proteins. They are set against a dark, smoky background. The entire image is framed within a circular area on a dark teal background.

5. Recruitment



Recruitment as of 9th August

Seirbhís Sláinte
Níos Fearr
á Forbairt

Building a
Better Health
Service

881

Community
Swabbers

Recruited and Onboarded

979

Staff supporting
Contact Tracing

Of these 979 staff;
856 of these staff have been hired
and retained as part of
dedicated workforce to support
the contact tracing function

The remaining 123 staff are redeployed
from the HSE and other Public Service
Roles

