

Reconfiguration of Acute Hospital Services

A roadmap to develop an integrated university hospital network for Cork & Kerry



Feidhmeannacht na Seirbhíse Sláinte
Health Service Executive

MALLOW GENERAL HOSPITAL

| Diagnostics | Medical Services | Surgical Services (day services) | Women and Children's Services |
|----------------------------------------------------------------------|--------------------------------------------------------------|--------------------------------------------------------------------------------------------|-----------------------------------------------------------------------------------|
| Point Of Care Testing (POCT) low volume diagnostic tests e.g. bloods | Acute Medicine | • General Surgery • Dental • Plastics • Urology • Outreach - other specialties | Outreach Maternity Services (including surgery): • Obstetrics • Gynaecology |
| Radiology (Imaging Medicine) | Medicine for the Elderly | | |
| | Gastroenterology | | |
| | Rehabilitation Medicine (patients aged over 65) | | |
| | Other medical specialties provided through outreach services | Critical Care Level I (resuscitate, stabilise and transfer) | |

- Medical Assessment Unit 12/7
- Urgent Care Centre 12/7

BANTRY GENERAL HOSPITAL

| Diagnostics | Medical Services | Surgical Services (day services) | Women and Children's Services | Mental Health Services |
|-------------------------------------------|--------------------------------------------------------------|--------------------------------------------------------------------------------------------|-----------------------------------------------------------------------------------|------------------------|
| Increase Acute Work Decrease Cold Work | Acute Medicine | • General Surgery • Dental • Plastics • Urology • Outreach - other specialties | Outreach Maternity Services (including surgery): • Obstetrics • Gynaecology | Mental Health |
| | Medicine for the Elderly | | | |
| | Gastroenterology | | | |
| | Rehabilitation Medicine (patients aged over 65) | | | |
| Radiology (Imaging Medicine) | Other medical specialties provided through outreach services | Critical Care - Appropriate for remote rural hospital | | |

- Medical Assessment Unit 12/7
- Urgent Care Centre 12/7

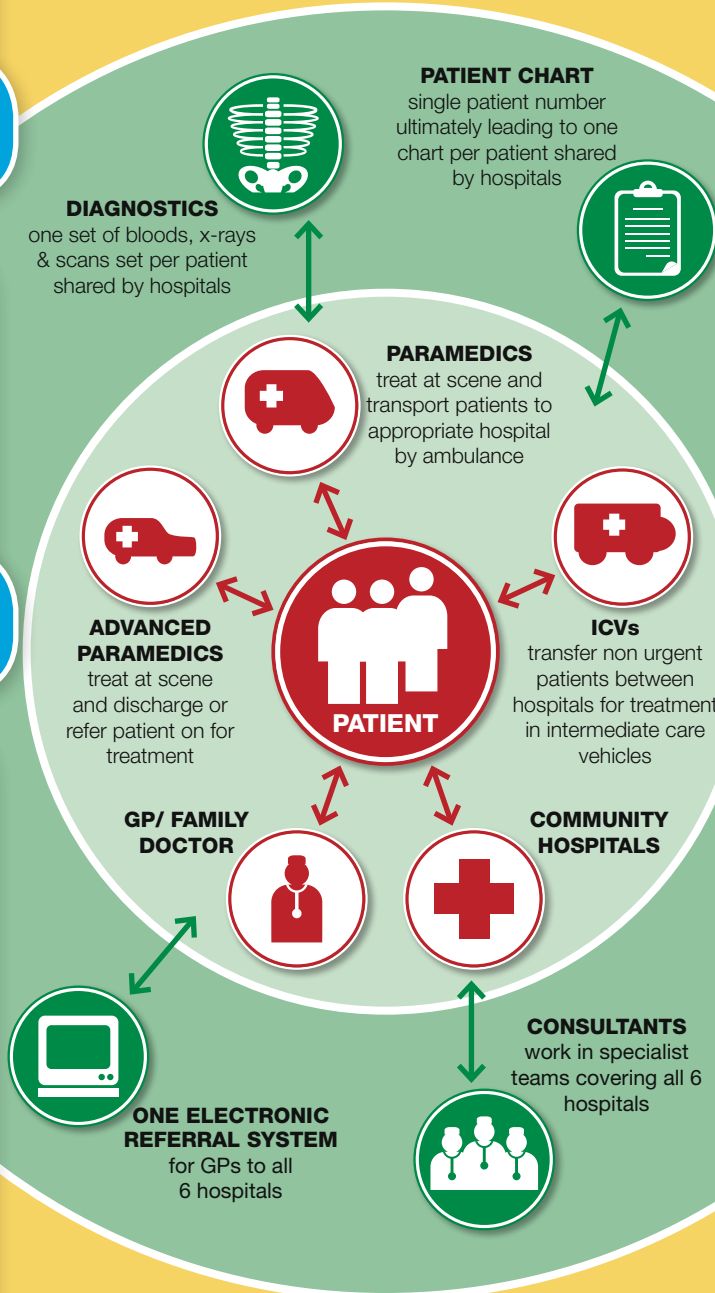
CORK UNIVERSITY HOSPITAL

| Diagnostics | Main Centre Complex Medical Services | Main Centre Complex Surgical Services | Main Centre Women and Children's Services | Mental Health |
|--------------------------------------------------------------------------------------------------------------------------------------------------------|----------------------------------------------------------------|---------------------------------------------|---------------------------------------------------------------------------------------------|--------------------|
| Laboratory Medicine • Clinical Biochemistry • Clinical Microbiology • Haematology / Blood Transfusion • Immunology • Molecular Genetics | Regional Centre Cardiology | Regional Cancer Centre | Maternity Services – • Obstetrics • Midwifery • Gynaecology (emergency and cancer) | Mental Health |
| | Dermatology (inpatient) | Emergency General Surgery for Cork | | Liaison Psychiatry |
| | Endocrine/Diabetes (inpatient) | Regional Centre for Cardio Thoracic Surgery | Regional Centre for Neonatology | |
| | Gastroenterology (inpatient) | Maxillo Facial (trauma and cancer) | | |
| | Clinical Haematology Medical Oncology Radiation Oncology | Regional Centre for Neurosurgery | | |
| Histopathology (tissue analysis) | Infectious Diseases | Orthopaedics (trauma) | Regional Centre Paediatrics | |
| | Medicine for the Elderly | Plastics (trauma and cancer) | | |
| Radiology (Imaging Medicine) | Neuroscience/Neurology | Vascular (emergency and complex elective) | | |
| | Acute Stroke Unit | Critical Care Level II and Level III | | |
| | Palliative Care | | | |
| | Renal | | | |
| | Respiratory | | | |
| | Rheumatology (inpatient) | | | |

- Emergency Department 24/7
- Acute Medical Unit 24/7
- Urgent Care Centre
- Surgical Assessment Unit



CLINICAL GOVERNANCE/ MANAGEMENT
An integrated University Hospital Network



CLINICAL GOVERNANCE/ MANAGEMENT
An integrated University Hospital Network



SOUTH INFIRMARY VICTORIA UNIVERSITY HOSPITAL

| Diagnostics | Medical Services (elective) | Surgical Services (elective) | Women and Children's services (elective) |
|----------------------------------------------------------------------|----------------------------------------------|--------------------------------------------------------------|--------------------------------------------------------------------------------------|
| Point Of Care Testing (POCT) low volume diagnostic tests e.g. bloods | Regional Centre Dermatology | Regional Centre Ear, Nose and Throat | Elective Gynaecology and uro-gynaecology: day services, diagnostics and out-patients |
| Radiology (Imaging Medicine) | Rehabilitation Medicine | Regional Centre Ophthalmology | |
| | Endocrinology (day services) | Maxillo-Facial - elective | National Cervical Screening Programme |
| | Sexually Transmitted Diseases (day services) | Plastics | |
| | Rheumatology (day services) | Regional Centre Elective Orthopaedics | |
| | | Regional Centre Pain Medicine | |
| | | Critical Care Level II (intensive care and high dependency) | |
| | | Trauma Rehabilitation | |

MERCY UNIVERSITY HOSPITAL

| Diagnostics | Medical Services | Surgical Services | Mental Health Services |
|------------------------------|------------------------------------------------------------------|----------------------------------------------|------------------------|
| Specialty Regional Services | Acute Medicine | Regional Centre for Elective General Surgery | Mental Health Services |
| Radiology (Imaging Medicine) | Regional Centre Gastroenterology Diagnostic Services | Regional Centre for Elective Urology | |
| | Regional Centre Rehabilitation Medicine (patients aged under 65) | Critical Care Level II and Level III | |
| | Regional Amputee Service | Regional Centre for Elective Vascular | |
| | Medicine for the Elderly | | |
| | Respiratory Medicine | | |
| | Infectious Diseases (inpatient) | | |
| | Rheumatology (inpatient) | | |
| | Endocrinology (inpatient) | | |
| Palliative Care | | | |

- Emergency Department 12/7
- Acute Medical Assessment Unit

- Emergency Department 12/7
- Acute Medical Assessment Unit
- Urgent Care Centre 12/7

KERRY GENERAL HOSPITAL

| Diagnostics | Medical Services | Surgical Services | Women and Children's Services | Mental Health Services |
|------------------------------------------------------------------------------------------------------------------------------------------------------------|--------------------------------------------------------------|------------------------------------------|---------------------------------------------------------------------------------------------------------|------------------------|
| Laboratory Medicine <ul style="list-style-type: none">• Clinical Biochemistry• Clinical Microbiology• Clinical Haematology | Acute Medicine | General Surgery – emergency and elective | Maternity Services – <ul style="list-style-type: none">• Obstetrics• Gynaecology | Mental Health |
| | Cardiology | | | |
| | Endocrinology | Ear, Nose and Throat (ENT) | Paediatrics | |
| | Palliative Care | Orthopaedics | | |
| | Medicine for the Elderly | Critical Care Level II and Level III | | |
| Radiology (Imaging Medicine) | Gastroenterology | Outreach – other surgical specialties | | |
| | Respiratory | | | |
| | Rehabilitation Medicine (patients aged over 65) | | | |
| | Rheumatology | | | |
| | Other medical specialties provided through outreach services | | | |

- Emergency Department 24/7
- Acute Medical Assessment Unit 12
- Urgent Care Centre

- Emergency Department 24/7
- Acute Medical Assessment Unit 12/7
- Urgent Care Centre 12/7