

National Clinical Programme for STROKE

Aim: Improve access to quality stroke services

Access to acute stroke treatment has been improved through:



Increased provision of stroke units



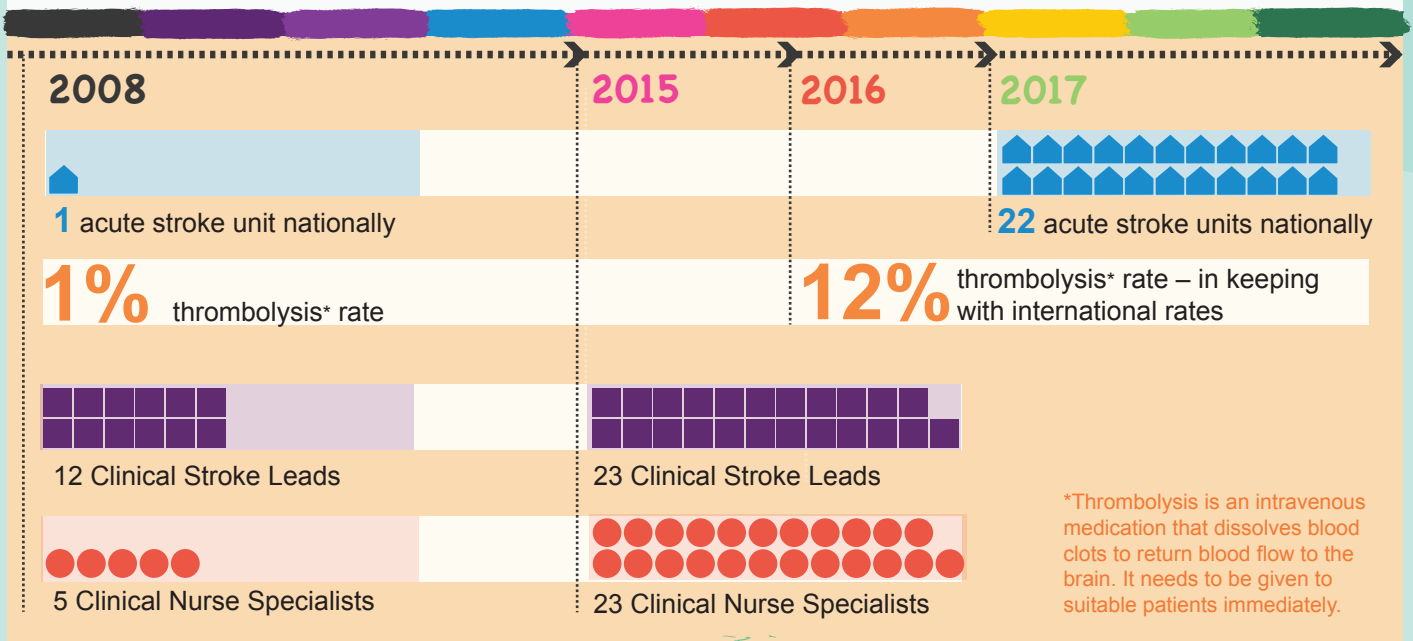
Wider availability of stroke thrombolysis*



Increase in specialist quality care



Development of early supported discharge services



26% ↓ Stroke mortality rates have reduced by 26% between 2008 and 2015.

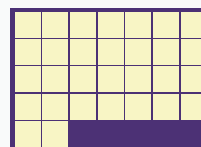
15% ↓ 8% ↑

In 2008, 15% of patients were discharged directly to a nursing home. In 2015, this had fallen to 8%.

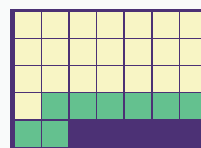


137 stroke patients were discharged home early in 2016 through Early Supported Discharges (ESD) services, providing care close to the patient's home.

This represents 16% of total stroke discharges across the 3 participating ESD teams.



In 2008, the average length of stay for a person in a hospital was 30 days.



In 2015, it was 22 days. This represents a 27% reduction in days spent in hospital.**

(**Source: 2015 Stroke Audit)

The information presented is not representative of formal/national KPI indicators but rather information extracted based on a pioneer demonstrator project.