

CHO 9 Employment Report: DEC 2023

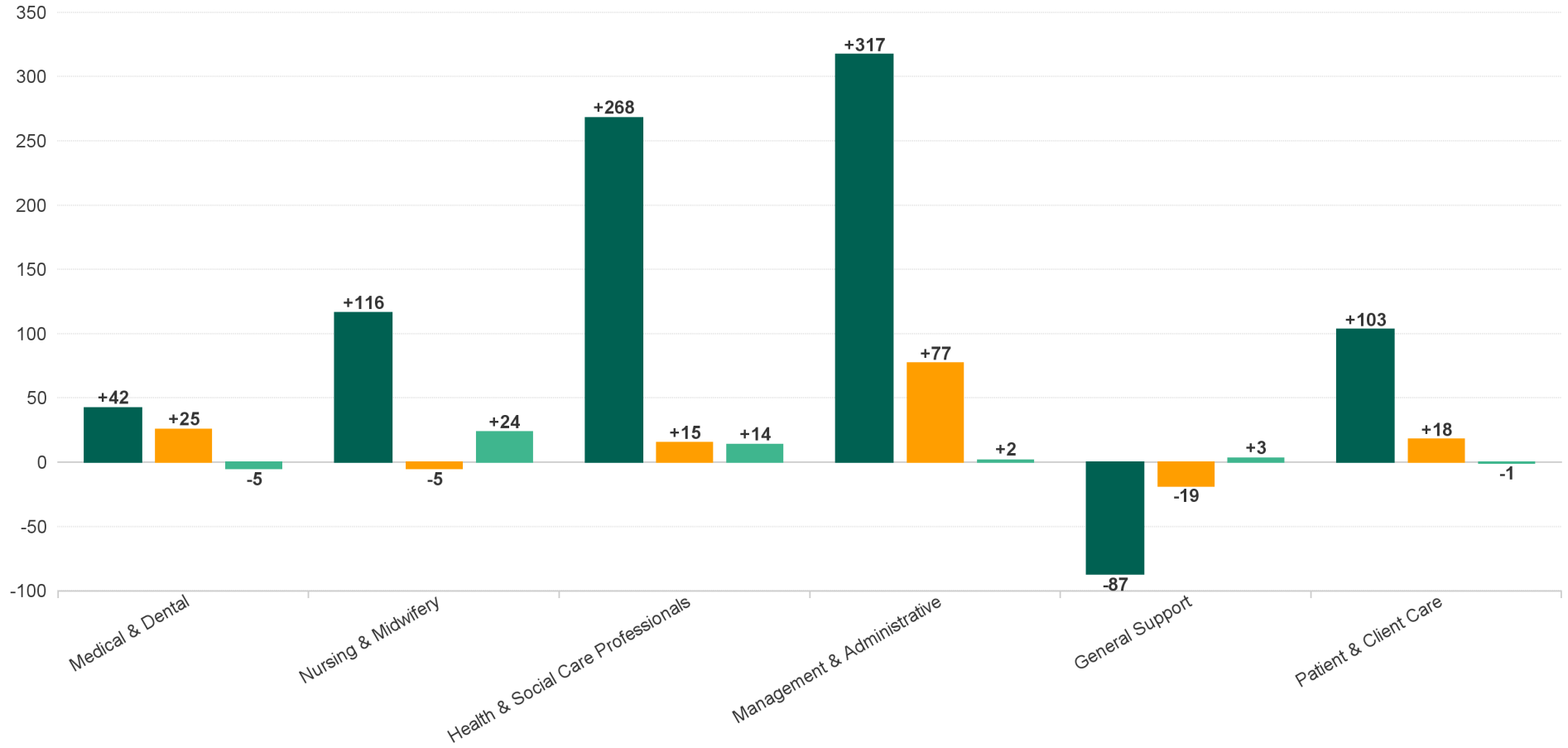
Employment Report : DEC 2023

Employment by Staff Group DEC 2023	WTE DEC 2019	WTE DEC 2022(1)	WTE NOV 2023	WTE DEC 2023	WTE change since DEC 2019	% WTE Change since Dec 2019	WTE change since DEC 2022	% WTE Change since Dec 2022	WTE change since NOV 2023	No. DEC 2023
Overall	6,582	7,230	7,306	7,342	+760	+11.5%	+112	+1.6%	+37	8,416
Consultants	68	71	77	79	+10	+15.0%	+8	+11.7%	+1	85
Registrars	98	128	122	119	+21	+21.0%	-9	-7.2%	-3	123
SHO/ Interns	66	52	82	81	+15	+22.0%	+29	+56.0%	-1	83
Medical/ Dental, other	57	56	55	54	-3	-5.5%	-3	-4.5%	-2	68
Medical & Dental	290	306	337	332	+42	+14.6%	+25	+8.3%	-5	359
Nurse/ Midwife Manager	435	488	508	513	+78	+18.0%	+25	+5.1%	+6	550
Nurse/ Midwife Specialist & AN/MP	85	149	163	160	+75	+88.5%	+11	+7.4%	-3	172
Staff Nurse/ Staff Midwife	1,196	1,214	1,170	1,177	-19	-1.6%	-37	-3.1%	+7	1,325
Public Health Nurse	176	172	172	171	-4	-2.4%	-1	-0.4%	-1	201
<i>Nursing/ Midwifery awaiting registration</i>	<i>11</i>	<i>16</i>	<i>8</i>	<i>6</i>	<i>-5</i>	<i>-44.4%</i>	<i>-10</i>	<i>-61.9%</i>	<i>-2</i>	<i>7</i>
<i>Post-registration Nurse/ Midwife Student</i>	<i>26</i>	<i>19</i>	<i>20</i>	<i>20</i>	<i>-6</i>	<i>-23.1%</i>	<i>+1</i>	<i>+6.3%</i>	<i>+0</i>	<i>20</i>
<i>Pre-registration Nurse/ Midwife Intern</i>	<i>18</i>	<i>8</i>		<i>17</i>	<i>-1</i>	<i>-5.6%</i>	<i>+9</i>	<i>+110.9%</i>	<i>+17</i>	<i>34</i>
Nursing/ Midwifery Student	55	43	28	43	-12	-21.6%	+0	+0.7%	+15	61
Nursing/ Midwifery other	20	20	17	17	-2	-12.5%	-3	-14.4%	0	19
Nursing & Midwifery	1,966	2,087	2,058	2,082	+116	+5.9%	-5	-0.2%	+24	2,328
Therapy Professions	486	587	571	580	+94	+19.3%	-7	-1.1%	+9	657
Health Science/ Diagnostics	37	26	28	27	-10	-26.4%	+1	+4.5%	-1	28
Social Care	695	804	791	790	+95	+13.7%	-14	-1.7%	0	968
Pharmacy	25	27	32	33	+8	+32.7%	+6	+22.1%	+1	41
Psychologists	164	187	199	200	+37	+22.3%	+14	+7.3%	+1	220
Social Workers	125	161	162	164	+39	+30.9%	+3	+2.1%	+2	177
H&SC, Other	71	64	74	76	+5	+7.1%	+11	+17.4%	+2	86
Health & Social Care Professionals	1,603	1,856	1,857	1,871	+268	+16.7%	+15	+0.8%	+14	2,177
Management (VIII & above)	79	97	101	103	+23	+29.4%	+6	+6.3%	+2	104
Administrative/ Supervisory (V to VII)	208	360	398	404	+196	+94.3%	+44	+12.2%	+6	430
Clerical (III & IV)	451	522	555	549	+98	+21.7%	+27	+5.2%	-6	627
Management & Administrative	739	979	1,054	1,056	+317	+42.9%	+77	+7.9%	+2	1,161
Support	452	383	363	365	-87	-19.3%	-18	-4.8%	+2	441
Maintenance/ Technical	35	36	34	35	0	-0.1%	0	-0.7%	+1	37
General Support	487	419	397	400	-87	-17.9%	-19	-4.5%	+3	478
Health Care Assistants	1,278	1,315	1,349	1,350	+73	+5.7%	+35	+2.6%	+1	1,623
Care, other	221	269	254	252	+31	+14.0%	-17	-6.3%	-2	290
Patient & Client Care	1,499	1,584	1,603	1,602	+103	+6.9%	+18	+1.1%	-1	1,913



WTE Change by Staff Category

■ WTE change since DEC 2019 ■ WTE change since DEC 2022 ■ WTE change since NOV 2023



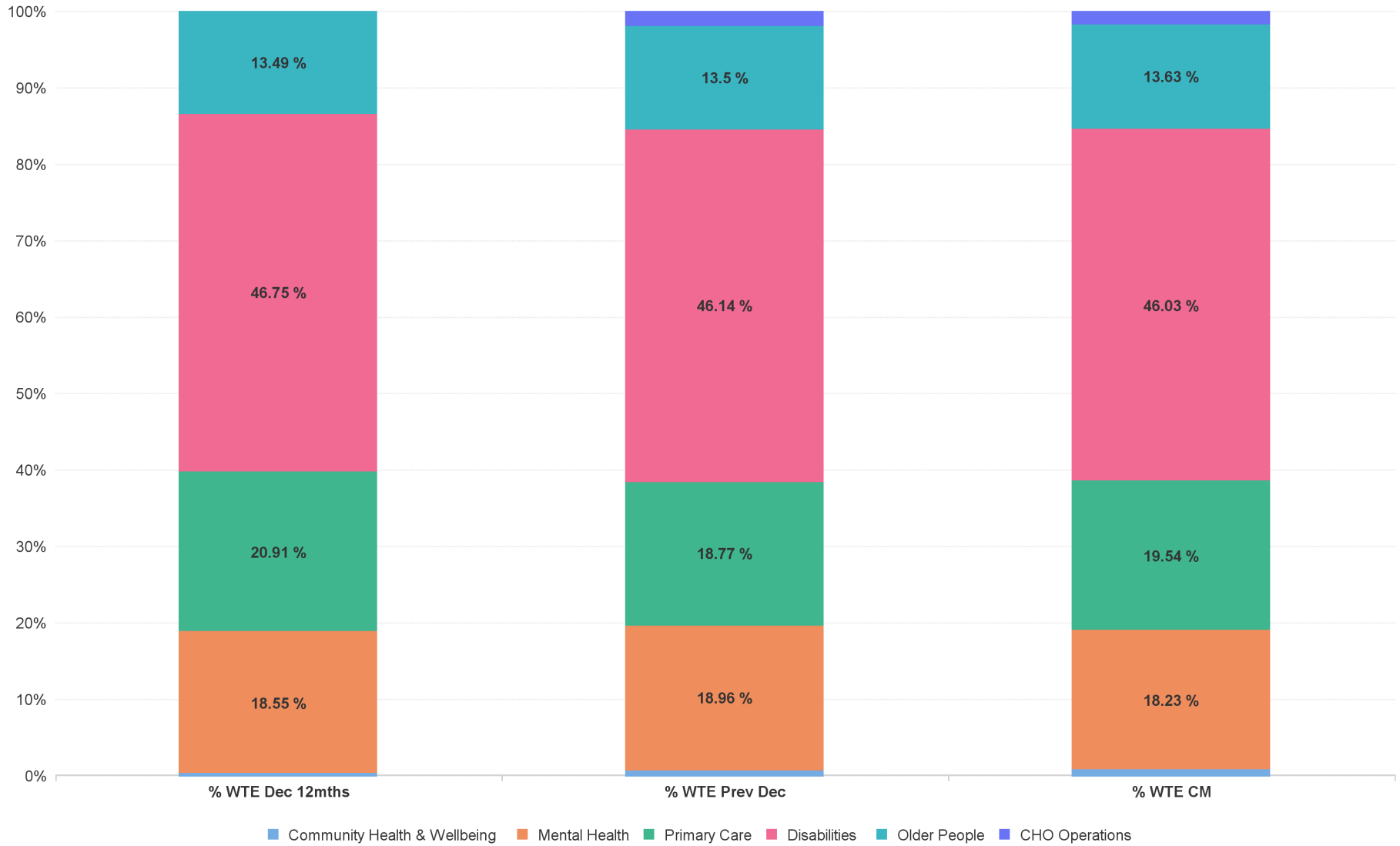
Employment Report by Care Group : DEC 2023

CHO 9 DEC 2023

Care Group DEC 2023	WTE DEC 2019	WTE DEC 2022(1)	WTE NOV 2023	WTE DEC 2023	WTE change since DEC 2019	% WTE Change since Dec 2019	WTE change since DEC 2022	% WTE Change since Dec 2022	WTE change since NOV 2023	No. DEC 2023
Overall	6,582	7,230	7,306	7,342	+760	+11.5%	+112	+1.6%	+37	8,416
Community Health & Wellbeing		46	58	59	+59		+14	+30.2%	+2	63
Mental Health	1,272	1,371	1,328	1,338	+67	+5.2%	-33	-2.4%	+11	1,457
Primary Care	1,247	1,357	1,434	1,435	+188	+15.1%	+78	+5.7%	+1	1,627
Disabilities	3,194	3,336	3,357	3,380	+186	+5.8%	+44	+1.3%	+23	4,009
Older People	870	976	1,001	1,001	+131	+15.0%	+25	+2.5%	-1	1,123
CHO Operations		144	128	129	+129		-15	-10.5%	+1	137
Community Services	6,582	7,230	7,306	7,342	+760	+11.5%	+112	+1.6%	+37	8,416



% Total by Care Group



Employment Report by HSE/S38 : DEC 2023

CHO 9 DEC 2023

Administration DEC 2023	WTE DEC 2019	WTE DEC 2022(1)	WTE NOV 2023	WTE DEC 2023	WTE change since DEC 2019	% WTE Change since Dec 2019	WTE change since DEC 2022	% WTE Change since Dec 2022	WTE change since NOV 2023	No. DEC 2023
Overall	6,582	7,230	7,306	7,342	+760	+11.5%	+112	+1.6%	+37	8,416
Health Service Executive	3,407	3,905	4,019	4,028	+621	+18.2%	+123	+3.2%	+9	4,436
Section 38 Voluntary Agencies	3,175	3,325	3,287	3,314	+139	+4.4%	-11	-0.3%	+27	3,980



Employment Report by HSE.S38: DEC 2023

Health Service Executive

HSE&S38 DEC 2023	WTE DEC 2019	WTE DEC 2022(1)	WTE NOV 2023	WTE DEC 2023	WTE change since DEC 2019	% WTE Change since Dec 2019	WTE change since DEC 2022	% WTE Change since Dec 2022	WTE change since NOV 2023	No. DEC 2023
Total Health Service Executive	3,407	3,905	4,019	4,028	+621	+18.2%	+123	+3.2%	+9	4,436
Consultants	56	59	64	65	+9	+16.4%	+6	+10.1%	+1	68
Registrars	90	123	115	112	+22	+24.5%	-11	-8.7%	-3	116
SHO/ Interns	60	47	75	74	+14	+22.6%	+27	+57.7%	-1	76
Medical/ Dental, other	51	50	50	48	-3	-5.9%	-2	-4.7%	-2	61
Medical & Dental	257	279	305	299	+42	+16.3%	+20	+7.1%	-6	321
Nurse/ Midwife Manager	248	287	312	316	+68	+27.6%	+29	+10.1%	+3	333
Nurse/ Midwife Specialist & AN/MP	75	134	149	146	+71	+95.5%	+12	+8.8%	-3	156
Staff Nurse/ Staff Midwife	693	726	733	733	+39	+5.7%	+6	+0.8%	-0	805
Public Health Nurse	176	172	172	171	-4	-2.4%	-1	-0.4%	-1	201
<i>Post-registration Nurse/ Midwife Student</i>	26	19	20	20	-6	-23.1%	+1	+6.3%	+0	20
<i>Nursing/ Midwifery awaiting registration</i>	11	15	8	6	-5	-44.4%	-9	-59.3%	-2	7
<i>Pre-registration Nurse/ Midwife Intern</i>	3			0	-3	-89.0%	+0		+0	1
Nursing/ Midwifery Student	40	34	28	26	-14	-34.3%	-7	-21.5%	-2	28
Nursing/ Midwifery other	13	12	13	13	-0	-1.4%	+1	+5.0%	-0	14
Nursing & Midwifery	1,244	1,365	1,407	1,405	+161	+12.9%	+40	+2.9%	-2	1,537
Therapy Professions	300	363	357	363	+63	+21.1%	+1	+0.2%	+7	418
Health Science/ Diagnostics	21	13	14	13	-8	-37.1%	+0	+1.2%	-1	13
Social Care	7	11	11	11	+4	+57.4%	+0	+0.4%	+0	13
Pharmacy	18	20	24	25	+7	+36.3%	+5	+27.7%	+1	31
Psychologists	124	138	147	149	+25	+20.4%	+11	+8.2%	+2	163
Social Workers	78	103	104	106	+27	+35.0%	+2	+2.3%	+2	113
H&SC, Other	57	54	64	65	+8	+14.8%	+11	+20.3%	+1	73
Health & Social Care Professionals	605	701	721	732	+127	+21.1%	+31	+4.4%	+11	824
Management (VIII & above)	44	58	61	61	+17	+38.2%	+3	+5.3%	+0	62
Administrative/ Supervisory (V to VII)	112	241	253	256	+144	+128.1%	+14	+5.9%	+3	269
Clerical (III & IV)	303	374	401	397	+94	+30.9%	+24	+6.3%	-4	442
Management & Administrative	459	673	715	714	+254	+55.3%	+41	+6.1%	-1	773
Support	198	182	174	177	-21	-10.7%	-5	-2.6%	+3	198
Maintenance/ Technical	9	10	8	8	-1	-9.9%	-2	-18.5%	+0	9
General Support	207	192	182	185	-22	-10.6%	-7	-3.5%	+3	207
Health Care Assistants	510	527	515	518	+8	+1.6%	-9	-1.7%	+3	577
Care, other	125	168	174	175	+50	+40.4%	+7	+4.4%	+1	197
Patient & Client Care	635	694	689	693	+58	+9.2%	-1	-0.2%	+4	774

Section 38 Voluntary Agencies

HSE&S38 DEC 2023	WTE DEC 2019	WTE DEC 2022(1)	WTE NOV 2023	WTE DEC 2023	WTE change since DEC 2019	% WTE Change since Dec 2019	WTE change since DEC 2022	% WTE Change since Dec 2022	WTE change since NOV 2023	No. DEC 2023
Total Section 38 Voluntary Agencies	3,175	3,325	3,287	3,314	+139	+4.4%	-11	-0.3%	+27	3,980
Consultants	12	11	13	13	+1	+8.9%	+2	+20.2%	+0	17
Registrars	8	5	7	7	-2	-18.8%	+2	+30.0%	+0	7
SHO/ Interns	6	5	7	7	+1	+16.7%	+2	+40.0%	+0	7
Medical/ Dental, other	6	6	6	6	-0	-2.6%	-0	-3.4%	+1	7
Medical & Dental	32	27	32	33	+0	+1.3%	+6	+20.3%	+1	38
Nurse/ Midwife Manager	188	201	195	197	+10	+5.3%	-4	-2.0%	+2	217
Nurse/ Midwife Specialist & AN/MP	10	15	14	14	+4	+37.0%	-1	-5.7%	+0	16
Staff Nurse/ Staff Midwife	502	488	437	444	-58	-11.6%	-44	-8.9%	+7	520
<i>Nursing/ Midwifery awaiting registration</i>		1					-1	-100.0%		
<i>Pre-registration Nurse/ Midwife Intern</i>	15	8		17	+2	+13.8%	+9	+106.3%	+17	33
Nursing/ Midwifery Student	15	9		17	+2	+13.8%	+8	+83.3%	+17	33
Nursing/ Midwifery other	7	8	5	5	-2	-33.5%	-4	-43.5%	+0	5
Nursing & Midwifery	721	721	651	677	-45	-6.2%	-44	-6.2%	+26	791
Therapy Professions	186	224	215	217	+30	+16.2%	-7	-3.2%	+2	239
Health Science/ Diagnostics	16	13	14	14	-2	-12.5%	+1	+7.7%	+0	15
Social Care	688	793	780	779	+91	+13.3%	-14	-1.7%	-1	955
Pharmacy	6	7	8	8	+1	+22.4%	+1	+6.8%	+0	10
Psychologists	40	49	52	51	+11	+28.5%	+2	+4.9%	-1	57
Social Workers	47	58	58	59	+11	+24.2%	+1	+1.8%	+1	64
H&SC, Other	14	10	10	11	-3	-23.8%	+0	+2.2%	+1	13
Health & Social Care Professionals	998	1,154	1,136	1,138	+140	+14.1%	-16	-1.4%	+2	1,353
Management (VIII & above)	35	39	40	42	+7	+18.5%	+3	+7.7%	+2	42
Administrative/ Supervisory (V to VII)	96	119	145	148	+52	+54.8%	+30	+25.0%	+3	161
Clerical (III & IV)	148	149	154	152	+4	+2.8%	+4	+2.5%	-2	185
Management & Administrative	279	306	340	342	+63	+22.6%	+36	+11.9%	+3	388
Support	254	202	189	188	-66	-26.0%	-14	-6.8%	-1	243
Maintenance/ Technical	26	25	25	27	+1	+3.5%	+2	+6.5%	+1	28
General Support	280	227	215	215	-65	-23.2%	-12	-5.3%	+0	271
Health Care Assistants	768	789	834	832	+65	+8.4%	+44	+5.5%	-2	1,046
Care, other	96	101	79	77	-20	-20.3%	-24	-24.0%	-3	93
Patient & Client Care	864	890	914	909	+45	+5.2%	+19	+2.2%	-5	1,139

CHO 9 by S38 Agency: DEC 2023

Avista Dublin

DEC 2023	WTE DEC 2019	WTE DEC 2022(1)	WTE NOV 2023	WTE DEC 2023	WTE change since DEC 2019	% WTE Change since Dec 2019	WTE change since DEC 2022	% WTE Change since Dec 2022	WTE change since NOV 2023	No. DEC 2023
Total Avista Dublin	1,034	1,078	1,086	1,098	+63.4	+6.1%	+20.1	+1.9%	+11.9	1,305
Consultants	1	3	4	4	+2.5	+191.0%	+1.0	+34.8%	+0.0	5
Registrars		1	1	1	+1.0		+0.0	+0.0%	+0.0	1
Medical/ Dental, other	2	2	2	2	+0.0	+0.0%	+0.0	+0.0%	+0.0	2
Medical & Dental	3	6	7	7	+3.5	+106.3%	+1.0	+17.0%	+0.0	8
Nurse/ Midwife Manager	62	61	63	63	+0.9	+1.5%	+2.0	+3.3%	+0.0	68
Nurse/ Midwife Specialist & AN/MP	8	13	13	13	+4.7	+57.3%	+0.2	+1.3%	+0.0	14
Staff Nurse/ Staff Midwife	186	186	178	179	-7.6	-4.1%	-7.8	-4.2%	+1.0	201
Nursing/ Midwifery Student	8			10	+2.5	+33.3%	+10.0		+10.0	20
Nursing/ Midwifery other	4	5	5	5	+0.2	+4.8%	+0.0	+0.0%	+0.0	5
Nursing & Midwifery	268	264	258	269	+0.7	+0.3%	+4.4	+1.7%	+11.0	308
Therapy Professions	33	44	43	43	+10.0	+30.2%	-1.5	-3.4%	+0.0	46
Social Care	163	191	182	182	+19.3	+11.9%	-8.9	-4.7%	+0.0	220
Pharmacy	2	2	2	2	+0.0	+0.0%	+0.0	+0.0%	+0.0	2
Psychologists	7	12	12	13	+5.2	+71.0%	+0.9	+7.3%	+0.8	13
Social Workers	10	14	14	14	+4.5	+44.6%	+0.0	+0.0%	+0.0	15
H&SC, Other	4	3	3	3	-1.4	-33.8%	+0.0	+0.0%	+0.0	3
Health & Social Care Professionals	219	266	256	257	+37.6	+17.2%	-9.6	-3.6%	+0.8	299
Management (VIII & above)	6	9	14	15	+9.0	+150.0%	+6.0	+66.7%	+1.0	15
Administrative/ Supervisory (V to VII)	25	40	47	46	+21.6	+86.6%	+6.6	+16.6%	-0.9	49
Clerical (III & IV)	33	35	31	31	-1.9	-5.7%	-3.3	-9.4%	+0.0	40
Management & Administrative	64	83	93	93	+28.7	+44.7%	+9.3	+11.2%	+0.2	104
Support	79	72	72	72	-6.6	-8.4%	-0.1	-0.2%	+0.3	94
Maintenance/ Technical	8	7	7	7	-1.0	-12.7%	+0.0	+0.0%	+0.0	7
General Support	87	79	79	79	-7.6	-8.8%	-0.1	-0.2%	+0.3	101
Health Care Assistants	362	358	377	377	+15.4	+4.3%	+18.5	+5.2%	-0.4	466
Care, other	32	20	17	17	-15.0	-47.1%	-3.4	-17.0%	+0.0	19
Patient & Client Care	393	379	394	394	+0.4	+0.1%	+15.1	+4.0%	-0.4	485

Central Remedial Clinic

DEC 2023	WTE DEC 2019	WTE DEC 2022(1)	WTE NOV 2023	WTE DEC 2023	WTE change since DEC 2019	% WTE Change since Dec 2019	WTE change since DEC 2022	% WTE Change since Dec 2022	WTE change since NOV 2023	No. DEC 2023
Total Central Remedial Clinic	278	340	330	330	+51.4	+18.4%	-9.9	-2.9%	-0.6	379
Consultants	1				-1.2	-100.0%				
Medical/ Dental, other	0	0			-0.4	-100.0%	-0.5	-100.0%		
Medical & Dental	2	0			-1.6	-100.0%	-0.5	-100.0%		
Nurse/ Midwife Manager	2	5	5	5	+2.7	+116.2%	-0.0	-0.8%	+0.0	6
Nurse/ Midwife Specialist & AN/MP	1	1	1	1	+0.6	+116.0%	+0.0	+0.0%	+0.0	2
Staff Nurse/ Staff Midwife	4	5	4	4	+0.7	+20.0%	-0.5	-10.0%	+0.1	7
Nursing/ Midwifery other		1					-1.0	-100.0%		
Nursing & Midwifery	6	12	10	10	+4.0	+62.2%	-1.5	-12.8%	+0.1	15
Therapy Professions	78	93	80	81	+3.9	+5.0%	-12.1	-13.0%	+1.0	89
Health Science/ Diagnostics	15	12	13	13	-2.0	-13.3%	+1.0	+8.3%	+0.0	13
Social Care		1					-1.0	-100.0%		
Psychologists	11	8	12	12	+1.6	+14.4%	+4.4	+55.6%	+0.0	14
Social Workers	8	11	11	11	+2.8	+35.1%	-0.3	-2.8%	+0.0	12
Health & Social Care Professionals	111	125	116	117	+6.2	+5.5%	-8.0	-6.4%	+1.0	128
Management (VIII & above)	7	9	8	8	+1.0	+14.3%	-1.0	-11.1%	+0.0	8
Administrative/ Supervisory (V to VII)	15	17	28	30	+14.9	+96.2%	+13.5	+80.7%	+2.5	33
Clerical (III & IV)	32	41	45	42	+9.8	+30.5%	+1.5	+3.6%	-2.7	50
Management & Administrative	55	66	81	80	+25.7	+47.0%	+14.0	+21.1%	-0.2	91
Support	14	14	13	13	-1.4	-10.1%	-1.7	-11.9%	+0.0	15
Maintenance/ Technical	1	2	2	2	+1.0	+100.0%	+0.0	+0.0%	+0.0	2
General Support	15	16	15	15	-0.4	-2.7%	-1.7	-10.5%	+0.0	17
Health Care Assistants	51	60	67	69	+17.6	+34.6%	+8.7	+14.6%	+1.4	82
Care, other	39	59	42	39	-0.0	-0.1%	-20.9	-35.1%	-2.9	46
Patient & Client Care	90	119	109	107	+17.6	+19.6%	-12.2	-10.2%	-1.5	128

Incorporated Orthopaedic Hospital

DEC 2023	WTE DEC 2019	WTE DEC 2022(1)	WTE NOV 2023	WTE DEC 2023	WTE change since DEC 2019	% WTE Change since Dec 2019	WTE change since DEC 2022	% WTE Change since Dec 2022	WTE change since NOV 2023	No. DEC 2023
Total Incorporated Orthopaedic Hos	226	273	288	290	+64.7	+28.7%	+16.9	+6.2%	+2.0	342
Consultants	1	2	2	2	+0.9	+150.0%	+0.0	+0.0%	+0.0	2
Registrars	2	2	3	3	+1.0	+50.0%	+1.0	+50.0%	+0.0	3
SHO/ Interns	5	4	6	6	+1.0	+20.0%	+2.0	+50.0%	+0.0	6
Medical & Dental	8	8	11	11	+2.9	+38.2%	+3.0	+40.0%	+0.0	11
Nurse/ Midwife Manager	18	18	18	19	+0.5	+2.8%	+0.7	+3.7%	+1.0	22
Staff Nurse/ Staff Midwife	60	69	64	64	+4.6	+7.7%	-4.9	-7.1%	+0.0	74
Nursing & Midwifery	78	87	82	83	+5.1	+6.5%	-4.2	-4.9%	+1.0	96
Therapy Professions	20	34	38	38	+17.8	+89.0%	+4.0	+11.7%	+0.0	41
Health Science/ Diagnostics	1	1	1	1	+0.0	+0.0%	+0.0	+0.0%	+0.0	2
Pharmacy	3	4	4	4	+0.7	+26.4%	+0.0	+0.0%	+0.0	5
Social Workers	7	9	10	10	+2.1	+28.6%	+0.8	+9.2%	+0.0	11
Health & Social Care Professionals	31	47	52	52	+20.6	+66.2%	+4.8	+10.1%	+0.0	59
Management (VIII & above)	1	2	2	2	+1.0	+100.0%	+0.0	+0.0%	+0.0	2
Administrative/ Supervisory (V to VII)	6	8	9	9	+2.7	+41.2%	+1.5	+20.0%	+0.0	10
Clerical (III & IV)	10	11	11	11	+1.0	+9.8%	-0.7	-6.1%	+0.0	16
Management & Administrative	17	21	22	22	+4.6	+26.8%	+0.8	+4.0%	+0.0	28
Support	34	46	37	37	+3.6	+10.8%	-8.4	-18.3%	+0.0	47
Maintenance/ Technical	2	2	2	2	+0.0	+0.0%	+0.0	+0.0%	+0.0	2
General Support	36	48	39	39	+3.6	+10.2%	-8.4	-17.6%	+0.0	49
Health Care Assistants	56	63	83	84	+27.9	+49.8%	+20.9	+33.2%	+1.0	97
Care, other	0	0	0	0	+0.0	+0.0%	-0.0	-1.5%	+0.0	2
Patient & Client Care	56	63	83	84	+27.9	+49.5%	+20.9	+33.0%	+1.0	99

St. Michael's House Dublin

DEC 2023	WTE DEC 2019	WTE DEC 2022(1)	WTE NOV 2023	WTE DEC 2023	WTE change since DEC 2019	% WTE Change since Dec 2019	WTE change since DEC 2022	% WTE Change since Dec 2022	WTE change since NOV 2023	No. DEC 2023
Total St. Michael's House Dublin	1,431	1,449	1,455	1,463	+32.5	+2.3%	+13.5	+0.9%	+7.6	1,793
Consultants	8	6	7	7	-1.0	-12.1%	+1.4	+25.7%	+0.2	9
Registrars	4	1	1	1	-3.0	-75.0%	+0.0	+0.0%	+0.0	1
Medical/ Dental, other	4	4	4	4	+0.3	+6.7%	+0.3	+6.7%	+0.5	5
Medical & Dental	16	10	11	12	-3.7	-23.6%	+1.7	+16.3%	+0.7	15
Nurse/ Midwife Manager	84	100	96	97	+13.0	+15.5%	-2.6	-2.6%	+1.0	106
Staff Nurse/ Staff Midwife	162	149	150	156	-5.8	-3.6%	+6.5	+4.4%	+6.3	194
Nursing & Midwifery	246	249	246	253	+7.2	+2.9%	+4.0	+1.6%	+7.4	300
Therapy Professions	51	48	53	54	+2.5	+4.9%	+5.7	+11.8%	+1.1	61
Social Care	525	601	598	597	+71.9	+13.7%	-3.9	-0.6%	-0.5	735
Psychologists	18	27	25	24	+5.6	+30.2%	-3.0	-11.0%	-1.4	27
Social Workers	20	21	23	23	+3.1	+15.5%	+1.6	+7.3%	+0.5	25
H&SC, Other	10	8	7	8	-2.0	-19.8%	+0.2	+3.0%	+0.7	10
Health & Social Care Professionals	625	705	706	706	+81.1	+13.0%	+0.7	+0.1%	+0.3	858
Management (VIII & above)	21	19	15	16	-5.4	-25.3%	-3.0	-15.8%	+1.0	16
Administrative/ Supervisory (V to VII)	43	47	54	55	+12.2	+28.6%	+7.9	+16.6%	+1.0	60
Clerical (III & IV)	54	45	52	53	-0.8	-1.5%	+7.5	+16.6%	+0.8	60
Management & Administrative	118	112	121	124	+6.0	+5.1%	+12.4	+11.1%	+2.9	136
Support	96	40	41	39	-57.1	-59.4%	-1.2	-2.9%	-1.5	51
Maintenance/ Technical	12	11	13	14	+1.9	+15.7%	+2.7	+23.3%	+1.5	15
General Support	108	52	53	53	-55.2	-51.0%	+1.5	+2.9%	-0.1	66
Health Care Assistants	293	302	299	295	+1.5	+0.5%	-6.7	-2.2%	-4.0	393
Care, other	25	20	20	20	-4.5	-18.4%	+0.1	+0.3%	+0.3	25
Patient & Client Care	318	322	319	315	-3.0	-0.9%	-6.6	-2.1%	-3.7	418

St. Vincent's Fairview

DEC 2023	WTE DEC 2019	WTE DEC 2022(1)	WTE NOV 2023	WTE DEC 2023	WTE change since DEC 2019	% WTE Change since Dec 2019	WTE change since DEC 2022	% WTE Change since Dec 2022	WTE change since NOV 2023	No. DEC 2023
Total St. Vincent's Fairview	206	185	127	134	-72.5	-35.2%	-51.6	-27.9%	+6.5	161
Consultants	1	1	1	1	-0.2	-15.3%	-0.2	-15.3%	+0.0	1
Registrars	2	1	2	2	-0.5	-25.0%	+0.5	+50.0%	+0.0	2
SHO/ Interns	1	1	1	1	+0.0	+0.0%	+0.0	+0.0%	+0.0	1
Medical & Dental	4	3	4	4	-0.7	-16.3%	+0.3	+10.1%	+0.0	4
Nurse/ Midwife Manager	21	18	14	14	-7.1	-33.1%	-4.1	-22.0%	+0.0	15
Nurse/ Midwife Specialist & AN/MP	2	1			-1.5	-100.0%	-1.0	-100.0%		
Staff Nurse/ Staff Midwife	91	78	41	41	-50.1	-54.8%	-37.1	-47.3%	+0.0	44
Nursing/ Midwifery Student	7	9		7	-0.5	-7.1%	-2.5	-27.8%	+6.5	13
Nursing/ Midwifery other	3	3			-2.5	-100.0%	-2.5	-100.0%		
Nursing & Midwifery	124	109	56	62	-61.7	-49.8%	-47.1	-43.1%	+6.5	72
Therapy Professions	5	4	1	1	-3.9	-85.8%	-3.2	-83.3%	+0.0	2
Pharmacy	2	2	2	2	+0.7	+43.8%	+0.5	+27.8%	+0.0	3
Psychologists	4	3	3	3	-0.9	-25.7%	+0.1	+4.0%	+0.0	3
Social Workers	2	2	1	1	-1.0	-50.0%	-1.0	-50.0%	+0.0	1
Health & Social Care Professionals	12	10	7	7	-5.1	-43.7%	-3.6	-35.4%	+0.0	9
Management (VIII & above)			1	1	+1.0		+1.0		+0.0	1
Administrative/ Supervisory (V to VII)	6	7	7	7	+1.1	+18.3%	+0.1	+1.8%	+0.0	9
Clerical (III & IV)	19	16	15	15	-4.0	-21.0%	-1.3	-8.0%	+0.0	19
Management & Administrative	25	24	23	23	-1.9	-7.4%	-0.2	-0.8%	+0.0	29
Support	31	29	27	27	-4.4	-14.2%	-2.3	-7.7%	+0.0	36
Maintenance/ Technical	3	3	2	2	-1.0	-33.3%	-1.0	-33.3%	+0.0	2
General Support	34	32	29	29	-5.4	-15.8%	-3.3	-10.1%	+0.0	38
Health Care Assistants	6	6	8	8	+2.2	+38.6%	+2.2	+38.6%	+0.0	8
Care, other	1	1	1	1	+0.0	+0.0%	+0.0	+0.0%	+0.0	1
Patient & Client Care	7	7	9	9	+2.2	+32.9%	+2.2	+32.9%	+0.0	9

Employment Report by Community Health & Wellbeing DEC 2023

CHO 9 DEC 2023

Community Health & Wellbeing DEC 2023	WTE DEC 2019	WTE DEC 2022(1)	WTE NOV 2023	WTE DEC 2023	WTE change since DEC 2019	% WTE Change since Dec 2019	WTE change since DEC 2022	% WTE Change since Dec 2022	WTE change since NOV 2023	No. DEC 2023
Overall		46	58	59	+59		+14	+30.2%	+2	63
Dietitians		1.84	1.86	1.76	+1.8		-0.08		-0.1	2
Therapy Professions		2	2	2	+2		0	-4.3%	0	2
Health & Social Care Professionals		2	2	2	+2		0	-4.3%	0	2
Executive Management		0.89	2.92	2.9	+2.9		2.01		-0.02	3
Senior Management (VIII & GM)		0.94	3.97	3.95	+4.0		3.01		-0.02	4
Management (VIII & above)		2	7	7	+7		+5	+274.3%	0	7
Middle Management (V-VII)		6.73	10.76	11.54	+11.5		4.81		0.78	12
Administrative/ Supervisory (V to VII)		7	11	12	+12		+5	+71.5%	+1	12
General Administrative (III & IV)		5.22	5.82	5.17	+5.2		-0.05		-0.65	6
Clerical (III & IV)		5	6	5	+5		0	-1.0%	-1	6
Management & Administrative		14	23	24	+24		+10	+71.0%	+0	25
Technical Services			1	1	+1.0		1		0	1
Maintenance/ Technical			1	1	+1		+1		+0	1
General Support			1	1	+1		+1		+0	1
Health Promotion		30.06	31.35	33.17	+33.2		3.11		1.82	35
Care, other		30	31	33	+33		+3	+10.3%	+2	35
Patient & Client Care		30	31	33	+33		+3	+10.3%	+2	35



Employment Report by Mental Health DEC 2023

CHO 9 DEC 2023

Mental Health DEC 2023	WTE DEC 2019	WTE DEC 2022(1)	WTE NOV 2023	WTE DEC 2023	WTE change since DEC 2019	% WTE Change since Dec 2019	WTE change since DEC 2022	% WTE Change since Dec 2022	WTE change since NOV 2023	No. DEC 2023
Overall	1,272	1,371	1,328	1,338	+67	+5.2%	-33	-2.4%	+11	1,457
Consultants	50	55	58	59	+9	+17.2%	+3	+6.3%	+0	61
Registrars	31	57	47	46	+15	+48.2%	-11	-19.7%	-1	47
SHO/ Interns	53	36	54	54	+1	+1.6%	+18	+50.9%	0	56
Medical & Dental	134	148	160	158	+24	+18.2%	+10	+7.0%	-1	164
Nurse/ Midwife Manager	132	138	142	146	+14	+10.3%	+8	+5.7%	+3	152
Nurse/ Midwife Specialist & AN/MP	65	99	101	98	+33	+50.5%	-1	-0.7%	-3	103
Staff Nurse/ Staff Midwife	351	351	312	315	-37	-10.4%	-36	-10.3%	+3	346
Nursing/ Midwifery awaiting registration	11	14	8	6	-5	-44.4%	-8	-56.4%	-2	7
Pre-registration Nurse/ Midwife Intern	10	8		7	-3	-32.1%	-1	-14.1%	+7	14
Nursing/ Midwifery Student	21	22	8	13	-8	-38.4%	-9	-40.9%	+5	21
Nursing/ Midwifery other	11	9	8	8	-3	-26.7%	-1	-10.6%	+0	9
Nursing & Midwifery	581	619	571	580	-1	-0.2%	-39	-6.3%	+9	631
Therapy Professions	55	60	53	53	-2	-4.1%	-7	-12.3%	0	57
Social Care	1	1	1	1	+0	+11.1%	+0	+1.0%	+0	1
Pharmacy	8	7	10	10	+2	+26.4%	+3	+43.7%	+0	14
Psychologists	46	56	57	59	+14	+29.9%	+3	+5.8%	+2	65
Social Workers	43	57	54	55	+11	+26.1%	-2	-3.1%	+1	59
H&SC, Other	15	17	20	19	+4	+28.0%	+1	+6.8%	-1	20
Health & Social Care Professionals	167	198	195	196	+29	+17.3%	-2	-0.8%	+2	216
Management (VIII & above)	5	5	6	6	+1	+20.2%	+1	+21.7%	+0	6
Administrative/ Supervisory (V to VII)	28	38	40	41	+13	+46.9%	+3	+6.7%	+1	43
Clerical (III & IV)	104	109	110	110	+6	+5.5%	+1	+0.9%	-1	123
Management & Administrative	137	152	156	156	+20	+14.4%	+5	+3.0%	+0	172
Support	103	95	87	88	-15	-14.5%	-7	-6.9%	+1	104
Maintenance/ Technical	11	11	8	8	-3	-26.7%	-3	-26.7%	+0	8
General Support	114	106	95	96	-18	-15.7%	-9	-8.9%	+1	112
Health Care Assistants	126	137	140	139	+13	+10.5%	+2	+1.8%	-1	149
Care, other	13	12	12	12	0	-3.8%	0	-0.5%	+0	13
Patient & Client Care	139	149	152	151	+13	+9.1%	+2	+1.6%	0	162



Employment Report by Primary Care DEC 2023

CHO 9 DEC 2023

Primary Care DEC 2023	WTE DEC 2019	WTE DEC 2022(1)	WTE NOV 2023	WTE DEC 2023	WTE change since DEC 2019	% WTE Change since Dec 2019	WTE change since DEC 2022	% WTE Change since Dec 2022	WTE change since NOV 2023	No. DEC 2023
Overall	1,247	1,357	1,434	1,435	+188	+15.1%	+78	+5.7%	+1	1,627
Consultants	4	3	4	5	+0	+9.8%	+1	+40.4%	+1	5
Registrars	56	60	65	63	+8	+13.8%	+3	+5.0%	-2	66
SHO/ Interns	1	7	12	12	+11	+1,080.0%	+5	+70.3%	+0	12
Medical/ Dental, other	50	50	50	48	-2	-4.0%	-2	-4.7%	-2	61
Medical & Dental	111	121	131	128	+17	+15.3%	+7	+5.7%	-4	144
Nurse/ Midwife Manager	37	53	63	65	+28	+75.0%	+11	+21.0%	+2	71
Nurse/ Midwife Specialist & AN/MP	6	23	32	33	+26	+413.1%	+10	+45.0%	+1	37
Staff Nurse/ Staff Midwife	100	105	114	110	+10	+10.1%	+5	+5.1%	-4	131
Public Health Nurse	175	171	172	171	-4	-2.2%	+0	+0.2%	-1	201
<i>Post-registration Nurse/ Midwife Student</i>	26	19	20	20	-6	-23.1%	+1	+6.3%	+0	20
Nursing/ Midwifery Student	26	19	20	20	-6	-23.1%	+1	+6.3%	+0	20
Nursing/ Midwifery other		2	1	1	+1		-1	-48.5%	+0	1
Nursing & Midwifery	345	373	402	400	+55	+16.0%	+27	+7.3%	-2	461
Therapy Professions	196	229	226	233	+37	+18.7%	+3	+1.5%	+6	271
Health Science/ Diagnostics	20	13	14	13	-7	-35.7%	+0	+1.2%	-1	13
Social Care	4	6	8	8	+4	+84.9%	+2	+25.6%	+0	9
Pharmacy	12	13	15	15	+3	+27.3%	+2	+14.0%	0	18
Psychologists	65	72	80	79	+14	+20.8%	+7	+9.5%	-1	87
Social Workers	17	23	26	26	+9	+56.2%	+3	+11.2%	0	27
H&SC, Other	37	33	39	39	+3	+7.4%	+6	+19.2%	+1	45
Health & Social Care Professionals	351	390	408	413	+62	+17.6%	+23	+5.9%	+5	470
Management (VIII & above)	28	15	17	17	-11	-38.2%	+2	+14.0%	+0	18
Administrative/ Supervisory (V to VII)	77	93	100	100	+23	+29.1%	+7	+7.7%	+0	105
Clerical (III & IV)	182	185	203	201	+19	+10.3%	+16	+8.6%	-2	225
Management & Administrative	288	293	320	318	+31	+10.6%	+25	+8.6%	-2	348
Support	35	27	29	29	-5	-15.7%	+2	+6.6%	+0	33
General Support	35	27	29	29	-5	-15.7%	+2	+6.6%	+0	33
Health Care Assistants	13	35	27	31	+18	+139.0%	-3	-9.4%	+5	38
Care, other	105	118	116	115	+10	+9.8%	-3	-2.5%	-1	133
Patient & Client Care	118	153	143	147	+29	+24.2%	-6	-4.1%	+4	171

Employment Report by Disabilities DEC 2023

CHO 9 DEC 2023

Disabilities DEC 2023	WTE DEC 2019	WTE DEC 2022(1)	WTE NOV 2023	WTE DEC 2023	WTE change since DEC 2019	% WTE Change since Dec 2019	WTE change since DEC 2022	% WTE Change since Dec 2022	WTE change since NOV 2023	No. DEC 2023
Overall	3,194	3,336	3,357	3,380	+186	+5.8%	+44	+1.3%	+23	4,009
Consultants	13	9	13	13	+0	+3.0%	+3	+36.3%	+0	16
Registrars	6	3	2	2	-4	-66.7%	-1	-33.1%	+0	2
SHO/ Interns		1	2	2	+2		+1	+102.0%	+0	2
Medical/ Dental, other	6	6	6	6	0	-2.6%	0	-3.4%	+1	7
Medical & Dental	25	20	22	23	-2	-7.3%	+3	+16.5%	+1	27
Nurse/ Midwife Manager	192	211	211	210	+19	+9.8%	0	-0.1%	-1	229
Nurse/ Midwife Specialist & AN/MP	9	16	17	17	+8	+95.3%	+0	+3.0%	+0	19
Staff Nurse/ Staff Midwife	517	501	490	502	-15	-2.9%	+2	+0.3%	+12	579
Nursing/ Midwifery awaiting registration		2					-2	-100.0%		
Pre-registration Nurse/ Midwife Intern	8			10	+2	+29.0%	+10		+10	20
Nursing/ Midwifery Student	8	2		10	+2	+29.0%	+8	+405.1%	+10	20
Nursing/ Midwifery other	7	9	8	8	+1	+7.8%	-1	-10.8%	0	9
Nursing & Midwifery	732	739	726	747	+15	+2.1%	+9	+1.2%	+21	856
Therapy Professions	181	208	201	204	+23	+12.5%	-4	-1.9%	+2	227
Health Science/ Diagnostics	15	12	13	13	-2	-13.3%	+1	+8.3%	+0	13
Social Care	689	796	782	781	+92	+13.4%	-15	-1.9%	-1	957
Pharmacy	2	2	2	2	+0	+0.0%	+0	+0.0%	+0	2
Psychologists	53	57	61	61	+8	+15.9%	+4	+6.7%	+0	67
Social Workers	44	54	53	55	+11	+24.2%	+1	+1.4%	+2	60
H&SC, Other	19	13	14	15	-4	-23.4%	+1	+8.5%	+1	17
Health & Social Care Professionals	1,003	1,142	1,126	1,130	+127	+12.7%	-12	-1.0%	+4	1,343
Management (VIII & above)	37	45	45	47	+10	+25.5%	+2	+4.8%	+2	47
Administrative/ Supervisory (V to VII)	88	129	155	159	+71	+81.6%	+30	+23.4%	+4	172
Clerical (III & IV)	125	137	151	147	+22	+17.5%	+10	+7.2%	-4	175
Management & Administrative	250	311	351	353	+103	+41.1%	+42	+13.6%	+2	394
Support	196	136	135	134	-61	-31.2%	-2	-1.3%	-1	171
Maintenance/ Technical	22	20	21	23	+1	+4.1%	+3	+13.1%	+1	24
General Support	218	156	157	157	-60	-27.7%	+1	+0.6%	+1	195
Health Care Assistants	869	866	887	884	+15	+1.8%	+18	+2.1%	-3	1,095
Care, other	97	102	87	84	-13	-13.0%	-17	-17.0%	-3	99
Patient & Client Care	966	968	974	968	+3	+0.3%	+1	+0.1%	-6	1,194

Employment Report by Older People DEC 2023

CHO 9 DEC 2023

Older People DEC 2023	WTE DEC 2019	WTE DEC 2022(1)	WTE NOV 2023	WTE DEC 2023	WTE change since DEC 2019	% WTE Change since Dec 2019	WTE change since DEC 2022	% WTE Change since Dec 2022	WTE change since NOV 2023	No. DEC 2023
Overall	870	976	1,001	1,001	+131	+15.0%	+25	+2.5%	-1	1,123
Consultants	2	3	2	3	+1	+56.3%	+0	+0.0%	+0	3
Registrars	6	6	8	8	+2	+36.3%	+1	+16.1%	+0	8
SHO/ Interns	12	8	14	13	+1	+7.9%	+5	+60.7%	-1	13
Medical/ Dental, other	1				-1	-100.0%				
Medical & Dental	20	17	24	23	+3	+14.2%	+6	+34.8%	-1	24
Nurse/ Midwife Manager	75	79	84	85	+11	+14.1%	+6	+7.7%	+1	90
Nurse/ Midwife Specialist & AN/MP	5	11	13	12	+8	+160.8%	+1	+9.8%	-1	13
Staff Nurse/ Staff Midwife	227	255	253	249	+22	+9.8%	-6	-2.2%	-4	268
Public Health Nurse	0	1			0	-100.0%	-1	-100.0%		
Nursing/ Midwifery other	1				-1	-100.0%				
Nursing & Midwifery	308	346	351	347	+39	+12.7%	+1	+0.2%	-4	371
Therapy Professions	54	88	89	89	+35	+64.1%	+1	+1.7%	+0	100
Health Science/ Diagnostics	1	1	1	1	0	-31.0%	+0	+0.0%	+0	2
Social Care	1	1	0	0	-1	-62.0%	-1	-61.6%	+0	1
Pharmacy	3	4	4	4	+1	+26.4%	+0	+0.0%	+0	5
Psychologists		1	1	1	+1		0	-21.9%	+0	1
Social Workers	21	19	17	17	-4	-20.5%	-2	-11.0%	+0	19
H&SC, Other	0	1	2	3	+3	+752.8%	+3	+448.2%	+2	4
Health & Social Care Professionals	81	114	113	115	+34	+41.8%	+1	+0.9%	+2	132
Management (VIII & above)	9	13	14	14	+5	+56.4%	+1	+9.7%	+0	14
Administrative/ Supervisory (V to VII)	15	27	27	27	+12	+82.1%	+0	+0.4%	+0	30
Clerical (III & IV)	40	56	57	58	+18	+45.8%	+3	+4.6%	+1	67
Management & Administrative	64	96	98	100	+36	+55.8%	+4	+4.1%	+1	111
Support	118	119	110	111	-7	-5.9%	-8	-6.7%	+1	131
Maintenance/ Technical	2	2	2	2	+0	+0.0%	+0	+0.0%	+0	3
General Support	121	122	113	114	-7	-5.8%	-8	-6.6%	+1	134
Health Care Assistants	270	275	296	296	+26	+9.6%	+21	+7.5%	+0	341
Care, other	6	6	7	7	+0	+6.2%	+0	+4.1%	0	10
Patient & Client Care	276	281	302	302	+26	+9.5%	+21	+7.4%	0	351

Employment Report by CHO Operations DEC 2023

CHO 9 DEC 2023

CHO Operations DEC 2023	WTE DEC 2019	WTE DEC 2022(1)	WTE NOV 2023	WTE DEC 2023	WTE change since DEC 2019	% WTE Change since Dec 2019	WTE change since DEC 2022	% WTE Change since Dec 2022	WTE change since NOV 2023	No. DEC 2023
Overall		144	128	129	+129		-15	-10.5%	+1	137
Registrars		1					-1	-100.0%		
Medical & Dental		1					-1	-100.0%		
Nurse/ Midwife Manager		8	8	8	+8		+0	+1.3%	+0	8
Staff Nurse/ Staff Midwife		3	0	0	+0		-3	-89.6%	+0	1
Nursing & Midwifery		11	8	8	+8		-3	-24.2%	+0	9
Pharmacy		1	1	2	+2		+1	+103.1%	+1	2
Social Workers		8	12	12	+12		+4	+49.2%	0	12
Health & Social Care Professionals		9	13	14	+14		+5	+55.2%	+1	14
Management (VIII & above)		17	12	12	+12		-6	-32.3%	+0	12
Administrative/ Supervisory (V to VII)		66	65	65	+65		-1	-1.4%	0	68
Clerical (III & IV)		30	28	28	+28		-2	-7.2%	+0	31
Management & Administrative		113	105	105	+105		-9	-7.6%	+0	111
Support		5	1	2	+2		-4	-72.3%	+0	2
Maintenance/ Technical		2	1	1	+1		-1	-49.5%	+0	1
General Support		7	2	3	+3		-5	-66.3%	+0	3
Health Care Assistants		3					-3	-100.0%		
Patient & Client Care		3					-3	-100.0%		

Employment Report by Care Group (HSE Only) DEC 2023

CHO 9 DEC 2023

Community Health & Wellbeing

Community Health & Wellbeing HSE Only DEC 2023	WTE DEC 2019	WTE DEC 2022(1)	WTE NOV 2023	WTE DEC 2023	WTE change since DEC 2019	% WTE Change since Dec 2019	WTE change since DEC 2022	% WTE Change since Dec 2022	WTE change since NOV 2023	No. DEC 2023
Overall		46	58	59	+59		+14	+30.2%	+2	63
Therapy Professions		2	2	2	+2		0	-4.3%	0	2
Health & Social Care Professionals		2	2	2	+2		0	-4.3%	0	2
Management (VIII & above)		2	7	7	+7		+5	+274.3%	0	7
Administrative/ Supervisory (V to VII)		7	11	12	+12		+5	+71.5%	+1	12
Clerical (III & IV)		5	6	5	+5		0	-1.0%	-1	6
Management & Administrative		14	23	24	+24		+10	+71.0%	+0	25
Maintenance/ Technical			1	1	+1		+1		+0	1
General Support			1	1	+1		+1		+0	1
Care, other		30	31	33	+33		+3	+10.3%	+2	35
Patient & Client Care		30	31	33	+33		+3	+10.3%	+2	35



Mental Health

Mental Health HSE Only DEC 2023	WTE DEC 2019	WTE DEC 2022(1)	WTE NOV 2023	WTE DEC 2023	WTE change since DEC 2019	% WTE Change since Dec 2019	WTE change since DEC 2022	% WTE Change since Dec 2022	WTE change since NOV 2023	No. DEC 2023
Overall	1,066	1,186	1,201	1,205	+139	+13.1%	+19	+1.6%	+4	1,296
Consultants	49	54	57	58	+9	+18.0%	+4	+6.7%	+0	60
Registrars	29	56	46	44	+15	+53.2%	-12	-21.0%	-1	45
SHO/ Interns	52	35	53	53	+1	+1.6%	+18	+52.3%	0	55
Medical & Dental	130	145	156	155	+25	+19.3%	+10	+6.9%	-1	160
Nurse/ Midwife Manager	110	119	128	131	+21	+18.8%	+12	+10.0%	+3	137
Nurse/ Midwife Specialist & AN/MP	64	98	101	98	+34	+54.1%	+0	+0.3%	-3	103
Staff Nurse/ Staff Midwife	260	273	271	274	+14	+5.2%	+1	+0.3%	+3	302
Nursing/ Midwifery awaiting registration	11	13	8	6	-5	-44.4%	-7	-53.0%	-2	7
Pre-registration Nurse/ Midwife Intern	3			0	-3	-88.1%	+0		+0	1
Nursing/ Midwifery Student	14	13	8	6	-8	-54.2%	-6	-50.2%	-2	8
Nursing/ Midwifery other	9	7	8	8	-1	-6.1%	+2	+22.1%	+0	9
Nursing & Midwifery	457	509	515	517	+61	+13.3%	+8	+1.6%	+2	559
Therapy Professions	50	56	52	52	+2	+3.2%	-4	-7.4%	0	55
Social Care	1	1	1	1	+0	+11.1%	+0	+1.0%	+0	1
Pharmacy	6	5	8	8	+1	+22.0%	+3	+49.2%	+0	11
Psychologists	42	53	55	57	+15	+34.5%	+3	+5.9%	+2	62
Social Workers	41	55	53	54	+12	+29.7%	-1	-1.4%	+1	58
H&SC, Other	15	17	20	19	+4	+28.0%	+1	+6.8%	-1	20
Health & Social Care Professionals	156	188	188	190	+34	+21.9%	+2	+1.1%	+2	207
Management (VIII & above)	5	5	5	5	+0	+0.2%	+0	+1.4%	+0	5
Administrative/ Supervisory (V to VII)	22	31	32	34	+12	+55.0%	+2	+7.9%	+1	34
Clerical (III & IV)	85	92	95	94	+10	+11.4%	+2	+2.5%	-1	104
Management & Administrative	111	128	133	133	+22	+19.4%	+5	+3.7%	+0	143
Support	72	66	60	61	-11	-14.7%	-4	-6.5%	+1	68
Maintenance/ Technical	8	8	6	6	-2	-24.2%	-2	-24.2%	+0	6
General Support	80	74	66	67	-12	-15.6%	-6	-8.4%	+1	74
Health Care Assistants	120	131	132	131	+11	+9.1%	+0	+0.2%	-1	141
Care, other	12	11	11	11	0	-4.1%	0	-0.5%	+0	12
Patient & Client Care	132	142	143	142	+10	+7.9%	+0	+0.1%	0	153

Primary Care

Primary Care HSE Only DEC 2023	WTE DEC 2019	WTE DEC 2022(1)	WTE NOV 2023	WTE DEC 2023	WTE change since DEC 2019	% WTE Change since Dec 2019	WTE change since DEC 2022	% WTE Change since Dec 2022	WTE change since NOV 2023	No. DEC 2023
Overall	1,247	1,357	1,434	1,435	+188	+15.1%	+78	+5.7%	+1	1,627
Consultants	4	3	4	5	+0	+9.8%	+1	+40.4%	+1	5
Registrars	56	60	65	63	+8	+13.8%	+3	+5.0%	-2	66
SHO/ Interns	1	7	12	12	+11	+1,080.0%	+5	+70.3%	+0	12
Medical/ Dental, other	50	50	50	48	-2	-4.0%	-2	-4.7%	-2	61
Medical & Dental	111	121	131	128	+17	+15.3%	+7	+5.7%	-4	144
Nurse/ Midwife Manager	37	53	63	65	+28	+75.0%	+11	+21.0%	+2	71
Nurse/ Midwife Specialist & AN/MP	6	23	32	33	+26	+413.1%	+10	+45.0%	+1	37
Staff Nurse/ Staff Midwife	100	105	114	110	+10	+10.1%	+5	+5.1%	-4	131
Public Health Nurse	175	171	172	171	-4	-2.2%	+0	+0.2%	-1	201
Post-registration Nurse/ Midwife Student	26	19	20	20	-6	-23.1%	+1	+6.3%	+0	20
Nursing/ Midwifery Student	26	19	20	20	-6	-23.1%	+1	+6.3%	+0	20
Nursing/ Midwifery other		2	1	1	+1		-1	-48.5%	+0	1
Nursing & Midwifery	345	373	402	400	+55	+16.0%	+27	+7.3%	-2	461
Therapy Professions	196	229	226	233	+37	+18.7%	+3	+1.5%	+6	271
Health Science/ Diagnostics	20	13	14	13	-7	-35.7%	+0	+1.2%	-1	13
Social Care	4	6	8	8	+4	+84.9%	+2	+25.6%	+0	9
Pharmacy	12	13	15	15	+3	+27.3%	+2	+14.0%	0	18
Psychologists	65	72	80	79	+14	+20.8%	+7	+9.5%	-1	87
Social Workers	17	23	26	26	+9	+56.2%	+3	+11.2%	0	27
H&SC, Other	37	33	39	39	+3	+7.4%	+6	+19.2%	+1	45
Health & Social Care Professionals	351	390	408	413	+62	+17.6%	+23	+5.9%	+5	470
Management (VIII & above)	28	15	17	17	-11	-38.2%	+2	+14.0%	+0	18
Administrative/ Supervisory (V to VII)	77	93	100	100	+23	+29.1%	+7	+7.7%	+0	105
Clerical (III & IV)	182	185	203	201	+19	+10.3%	+16	+8.6%	-2	225
Management & Administrative	288	293	320	318	+31	+10.6%	+25	+8.6%	-2	348
Support	35	27	29	29	-5	-15.7%	+2	+6.6%	+0	33
General Support	35	27	29	29	-5	-15.7%	+2	+6.6%	+0	33
Health Care Assistants	13	35	27	31	+18	+139.0%	-3	-9.4%	+5	38
Care, other	105	118	116	115	+10	+9.8%	-3	-2.5%	-1	133
Patient & Client Care	118	153	143	147	+29	+24.2%	-6	-4.1%	+4	171

Disabilities

Disabilities HSE Only DEC 2023	WTE DEC 2019	WTE DEC 2022(1)	WTE NOV 2023	WTE DEC 2023	WTE change since DEC 2019	% WTE Change since Dec 2019	WTE change since DEC 2022	% WTE Change since Dec 2022	WTE change since NOV 2023	No. DEC 2023
Overall	450	469	485	489	+39	+8.6%	+20	+4.3%	+4	532
Consultants	2	1	2	2	+0	+0.0%	+1	+100.0%	+0	2
Registrars	2	1			-2	-100.0%	-1	-100.0%		
SHO/ Interns		1	2	2	+2		+1	+102.0%	+0	2
Medical & Dental	4	3	4	4	+0	+0.0%	+1	+34.2%	+0	4
Nurse/ Midwife Manager	44	46	48	46	+2	+5.0%	+0	+0.7%	-2	49
Nurse/ Midwife Specialist & AN/MP		3	3	3	+3		+0	+12.4%	+0	3
Staff Nurse/ Staff Midwife	166	160	159	163	-2	-1.3%	+3	+2.0%	+5	177
Nursing/ Midwifery awaiting registration		2					-2	-100.0%		
Pre-registration Nurse/ Midwife Intern	0				0	-100.0%				
Nursing/ Midwifery Student	0	2			0	-100.0%	-2	-100.0%		
Nursing/ Midwifery other	3	3	4	3	+0	+12.0%	+0	+1.2%	0	4
Nursing & Midwifery	212	214	213	216	+3	+1.5%	+2	+0.9%	+3	233
Therapy Professions	19	21	25	25	+6	+32.7%	+4	+18.5%	+0	31
Social Care	1	3	2	2	+1	+100.0%	-1	-32.7%	+0	2
Psychologists	16	11	12	12	-4	-23.9%	+2	+14.1%	+1	13
Social Workers	6	7	6	7	+0	+6.1%	0	-6.6%	+1	8
H&SC, Other	5	3	4	4	-1	-22.4%	+1	+30.6%	+0	4
Health & Social Care Professionals	48	46	48	50	+3	+5.5%	+5	+10.9%	+2	58
Management (VIII & above)	3	8	8	8	+5	+165.3%	+0	+2.2%	+0	8
Administrative/ Supervisory (V to VII)	4	25	26	27	+23	+513.5%	+2	+8.6%	+1	30
Clerical (III & IV)	6	17	22	21	+15	+247.2%	+4	+25.4%	-2	25
Management & Administrative	13	49	57	56	+43	+317.1%	+7	+13.2%	-1	63
Support	7	9	10	11	+4	+59.3%	+1	+13.8%	+0	11
Maintenance/ Technical	1				-1	-100.0%				
General Support	8	9	10	11	+3	+38.8%	+1	+13.8%	+0	11
Health Care Assistants	163	146	143	144	-19	-11.8%	-3	-1.8%	+0	154
Care, other	2	2	9	9	+7	+349.7%	+7	+352.0%	-1	9
Patient & Client Care	165	148	153	153	-12	-7.5%	+4	+2.9%	0	163

Older People

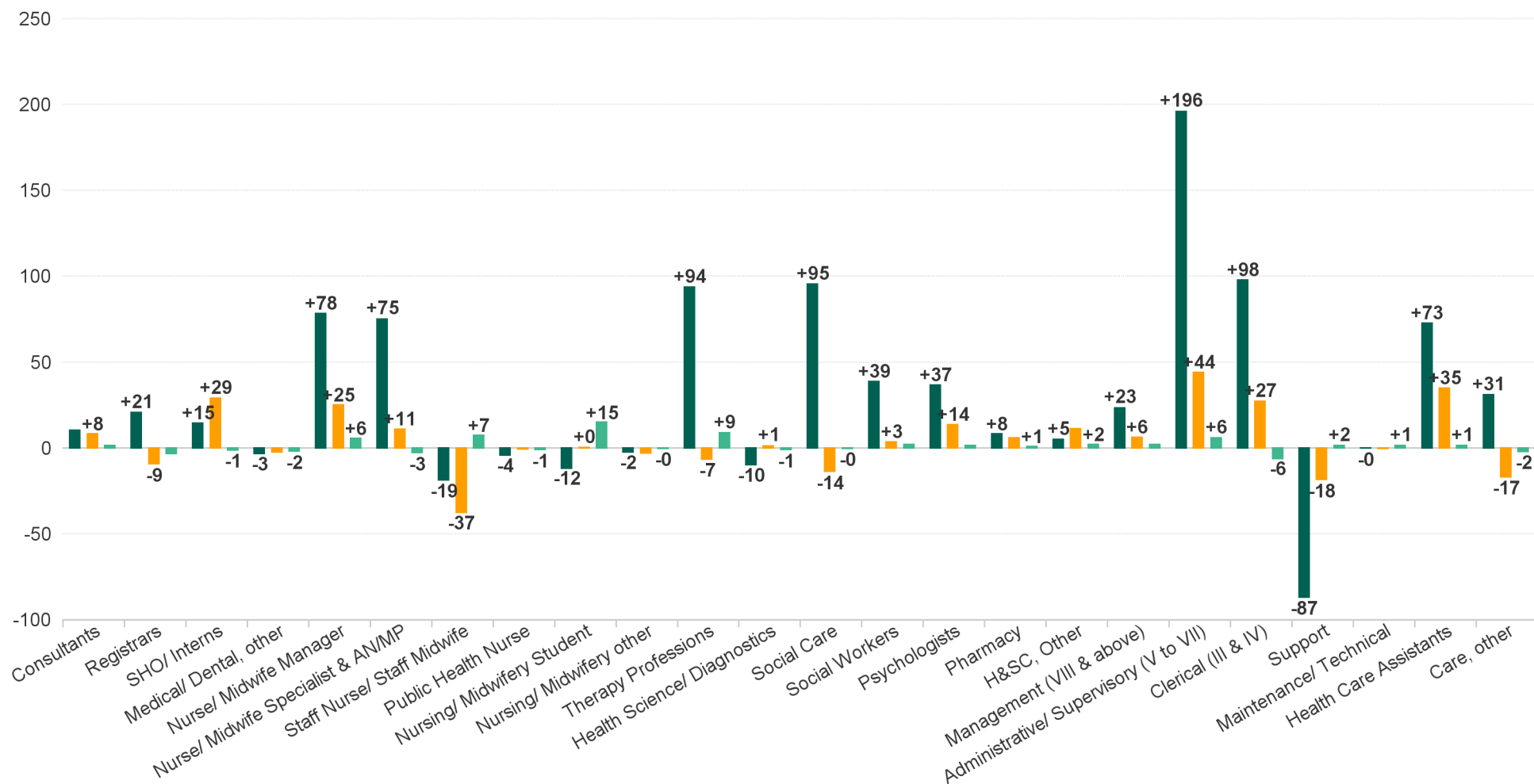
Older People HSE Only DEC 2023	WTE DEC 2019	WTE DEC 2022(1)	WTE NOV 2023	WTE DEC 2023	WTE change since DEC 2019	% WTE Change since Dec 2019	WTE change since DEC 2022	% WTE Change since Dec 2022	WTE change since NOV 2023	No. DEC 2023
Overall	644	703	713	710	+66	+10.3%	+8	+1.1%	-3	781
Consultants	1	1	1	1	+0	+0.0%	+0	+0.0%	+0	1
Registrars	4	4	5	5	+1	+28.5%	+0	+0.9%	+0	5
SHO/ Interns	7	4	8	7	0	-0.7%	+3	+71.2%	-1	7
Medical/ Dental, other	1				-1	-100.0%				
Medical & Dental	13	10	13	12	0	-0.4%	+3	+30.7%	-1	13
Nurse/ Midwife Manager	57	61	67	67	+10	+17.7%	+5	+8.9%	+0	68
Nurse/ Midwife Specialist & AN/MP	5	11	13	12	+8	+160.8%	+1	+9.8%	-1	13
Staff Nurse/ Staff Midwife	167	186	189	185	+18	+10.5%	-1	-0.3%	-4	194
Public Health Nurse	0	1			0	-100.0%	-1	-100.0%		
Nursing/ Midwifery other	1				-1	-100.0%				
Nursing & Midwifery	230	259	269	264	+34	+14.7%	+5	+1.9%	-5	275
Therapy Professions	34	54	51	52	+17	+49.7%	-2	-4.6%	+0	59
Health Science/ Diagnostics	0				0	-100.0%				
Social Care	1	1	0	0	-1	-62.0%	-1	-61.6%	+0	1
Psychologists		1	1	1	+1		0	-21.9%	+0	1
Social Workers	14	10	7	7	-6	-46.6%	-3	-28.1%	+0	8
H&SC, Other	0	1	2	3	+3	+752.8%	+3	+448.2%	+2	4
Health & Social Care Professionals	50	67	62	63	+13	+26.6%	-4	-5.6%	+2	73
Management (VIII & above)	8	11	12	12	+4	+50.9%	+1	+11.5%	+0	12
Administrative/ Supervisory (V to VII)	9	20	18	18	+10	+113.1%	-1	-7.2%	+0	20
Clerical (III & IV)	30	44	47	48	+17	+57.4%	+3	+7.4%	+1	51
Management & Administrative	47	75	77	78	+31	+66.4%	+3	+4.2%	+1	83
Support	85	74	73	74	-11	-12.6%	+0	+0.5%	+1	84
Maintenance/ Technical	0	0	0	0	+0	+0.0%	+0	+0.0%	+0	1
General Support	85	74	73	74	-11	-12.5%	+0	+0.5%	+1	85
Health Care Assistants	214	212	213	212	-2	-0.9%	0	-0.1%	-1	244
Care, other	6	6	6	6	+0	+6.5%	+0	+4.4%	0	8
Patient & Client Care	220	218	219	218	-2	-0.7%	+0	+0.0%	-1	252

CHO Operations

CHO Operations HSE Only DEC 2023	WTE DEC 2019	WTE DEC 2022(1)	WTE NOV 2023	WTE DEC 2023	WTE change since DEC 2019	% WTE Change since Dec 2019	WTE change since DEC 2022	% WTE Change since Dec 2022	WTE change since NOV 2023	No. DEC 2023
Overall		144	128	129	+129		-15	-10.5%	+1	137
Registrars		1					-1	-100.0%		
Medical & Dental		1					-1	-100.0%		
Nurse/ Midwife Manager		8	8	8	+8		+0	+1.3%	+0	8
Staff Nurse/ Staff Midwife		3	0	0	+0		-3	-89.6%	+0	1
Nursing & Midwifery		11	8	8	+8		-3	-24.2%	+0	9
Pharmacy		1	1	2	+2		+1	+103.1%	+1	2
Social Workers		8	12	12	+12		+4	+49.2%	0	12
Health & Social Care Professionals		9	13	14	+14		+5	+55.2%	+1	14
Management (VIII & above)		17	12	12	+12		-6	-32.3%	+0	12
Administrative/ Supervisory (V to VII)		66	65	65	+65		-1	-1.4%	0	68
Clerical (III & IV)		30	28	28	+28		-2	-7.2%	+0	31
Management & Administrative		113	105	105	+105		-9	-7.6%	+0	111
Support		5	1	2	+2		-4	-72.3%	+0	2
Maintenance/ Technical		2	1	1	+1		-1	-49.5%	+0	1
General Support		7	2	3	+3		-5	-66.3%	+0	3
Health Care Assistants		3					-3	-100.0%		
Patient & Client Care		3					-3	-100.0%		

WTE Change by Staff Group

■ WTE change since DEC 2019 ■ WTE change since DEC 2022 ■ WTE change since NOV 2023



Employment Report by WTE, Headcount, Gender, Full-Time / Part-Time etc. DEC 2023

CHO 9 DEC 2023

DEC 2023	WTE DEC 2023	No. DEC 2023	WTE : No	Number Male %	Number Female %	Male WTE : No.	Female WTE : No	Perm Count %	Perm Count Male %	Perm Count Female %	Fulltime Count %	Part time Count %	FT Count Male %	FT Count Female %
Total	7,342	8,416	1:0.9	18.25%	81.75%	1:0.9	1:0.9	88.70%	16.05%	72.65%	68.07%	31.93%	83.66%	64.59%
Consultant Dentistry	1	1	1:0.8		100.00%	1:	1:0.8	100.00%		100.00%		100.00%		
Consultant Medicine	4	4	1:0.9		100.00%	1:	1:0.9	75.00%		75.00%	75.00%			75.00%
Consultant Paediatrics	2	2	1:1	50.00%	50.00%	1:1	1:1	50.00%		50.00%	100.00%		100.00%	100.00%
Consultant Psychiatry	72	78	1:0.9	34.62%	65.38%	1:1	1:0.9	88.46%	28.21%	60.26%	85.90%	14.10%	96.30%	80.39%
Consultants	79	85	1:0.9	32.94%	67.06%	1:1	1:0.9	87.06%	25.88%	61.18%	84.71%	15.29%	96.43%	78.95%
Dentists	34	40	1:0.9	17.50%	82.50%	1:1	1:0.8	95.00%	17.50%	77.50%	67.50%	32.50%	85.71%	63.64%
Other Medical	19	28	1:0.7	17.86%	82.14%	1:0.5	1:0.7	96.43%	17.86%	78.57%	46.43%	53.57%	20.00%	52.17%
Medical/ Dental, other	54	68	1:0.8	17.65%	82.35%	1:0.8	1:0.8	95.59%	17.65%	77.94%	58.82%	41.18%	58.33%	58.93%
Registrar	97	100	1:1	28.00%	72.00%	1:1	1:1	4.00%	2.00%	2.00%	99.00%	1.00%	100.00%	98.61%
Senior Registrar	20	21	1:0.9	23.81%	76.19%	1:1	1:0.9				95.24%	4.76%	100.00%	93.75%
Specialist Registrar	2	2	1:1		100.00%	1:	1:1				100.00%			100.00%
Registrars	119	123	1:1	26.83%	73.17%	1:1	1:1	3.25%	1.63%	1.63%	98.37%	1.63%	100.00%	97.78%
Interns	1	1	1:1	100.00%		1:1	1:				100.00%		100.00%	
Senior House Officer	80	82	1:1	25.61%	74.39%	1:1	1:1	2.44%		2.44%	98.78%	1.22%	100.00%	98.36%
SHO/ Interns	81	83	1:1	26.51%	73.49%	1:1	1:1	2.41%		2.41%	98.80%	1.20%	100.00%	98.36%
Medical & Dental	332	359	1:0.9	26.46%	73.54%	1:1	1:0.9	40.39%	10.03%	30.36%	87.74%	12.26%	93.68%	85.61%
Clinical Nurse/ Midwife Manager 1	93	100	1:0.9	10.00%	90.00%	1:1	1:0.9	96.00%	9.00%	87.00%	76.00%	24.00%	80.00%	75.56%
Clinical Nurse/ Midwife Manager 2	263	287	1:0.9	21.25%	78.75%	1:1	1:0.9	96.86%	20.91%	75.96%	82.93%	17.07%	96.72%	79.20%
Clinical Nurse/ Midwife Manager 3	41	43	1:1	23.26%	76.74%	1:1	1:0.9	95.35%	23.26%	72.09%	95.35%	4.65%	100.00%	93.94%
Director Nursing/Midwifery, Assistant	86	89	1:1	13.48%	86.52%	1:1	1:1	98.88%	12.36%	86.52%	92.13%	7.87%	100.00%	90.91%
Director of Nursing/Midwifery	31	31	1:1	22.58%	77.42%	1:1	1:1	96.77%	22.58%	74.19%	96.77%	3.23%	100.00%	95.83%
Nurse/ Midwife Manager	513	550	1:0.9	18.18%	81.82%	1:1	1:0.9	96.91%	17.64%	79.27%	84.91%	15.09%	96.00%	82.44%
Advanced Nurse/ Midwife Practitioner	12	12	1:1		100.00%	1:	1:1	100.00%		100.00%	100.00%			100.00%
Adv. Nurse/ Midwife, Candidate	13	13	1:1	7.69%	92.31%	1:1	1:1	92.31%	7.69%	84.62%	100.00%		100.00%	100.00%
Clinical Nurse/ Midwife Specialist	135	147	1:0.9	11.56%	88.44%	1:1	1:0.9	98.64%	11.56%	87.07%	85.71%	14.29%	100.00%	83.85%
Nurse/ Midwife Specialist & AN/MP	160	172	1:0.9	10.47%	89.53%	1:1	1:0.9	98.26%	10.47%	87.79%	87.79%	12.21%	100.00%	86.36%
Nursing Education/Clinical	17	19	1:0.9	5.26%	94.74%	1:1	1:0.9	100.00%	5.26%	94.74%	78.95%	21.05%	100.00%	77.78%
Nursing/ Midwifery other	17	19	1:0.9	5.26%	94.74%	1:1	1:0.9	100.00%	5.26%	94.74%	78.95%	21.05%	100.00%	77.78%
Nursing/ Midwifery awaiting registration	6	7	1:0.9	42.86%	57.14%	1:0.8	1:0.9	42.86%		42.86%	100.00%		100.00%	100.00%
Post-registration Nurse/ Midwife Student	20	20	1:1		100.00%	1:	1:1	20.00%		20.00%	100.00%			100.00%
Pre-registration Nurse/ Midwife Intern	17	34	1:0.5	11.76%	88.24%	1:0.5	1:0.5				41.18%	58.82%	100.00%	33.33%
Nursing/ Midwifery Student	43	61	1:0.7	11.48%	88.52%	1:0.6	1:0.7	11.48%		11.48%	67.21%	32.79%	100.00%	62.96%
Public Health Nurse	171	201	1:0.9	1.49%	98.51%	1:1	1:0.9	98.01%	1.49%	96.52%	72.64%	27.36%	100.00%	72.22%
Public Health Nurse	171	201	1:0.9	1.49%	98.51%	1:1	1:0.9	98.01%	1.49%	96.52%	72.64%	27.36%	100.00%	72.22%
Staff Nurse [Intellectual Disability]	325	388	1:0.8	12.37%	87.63%	1:1	1:0.8	92.27%	11.60%	80.67%	60.57%	39.43%	87.50%	56.76%
Staff Nurse [Psychiatric]	319	354	1:0.9	22.60%	77.40%	1:0.9	1:0.9	92.66%	19.77%	72.88%	84.46%	15.54%	88.75%	83.21%
Staff Nurses [General/ Children's]	533	583	1:0.9	13.72%	86.28%	1:1	1:0.9	94.85%	12.86%	81.99%	81.65%	18.35%	95.00%	79.52%
Staff Nurse/ Staff Midwife	1,177	1,325	1:0.9	15.70%	84.30%	1:0.9	1:0.9	93.51%	14.34%	79.17%	76.23%	23.77%	90.87%	73.50%
Nursing & Midwifery	2,082	2,328	1:0.9	14.48%	85.52%	1:1	1:0.9	92.96%	13.27%	79.68%	78.61%	21.39%	93.18%	76.14%
Audiology	8	8	1:1	12.50%	87.50%	1:1	1:1	100.00%	12.50%	87.50%	100.00%		100.00%	100.00%
Clinical Engineering	14	14	1:1	100.00%		1:1	1:	100.00%	100.00%		100.00%		100.00%	
Medical Science	4	4	1:1	50.00%	50.00%	1:1	1:1	50.00%	25.00%	25.00%	100.00%		100.00%	100.00%
Radiographers	1	2	1:0.5		100.00%	1:	1:0.5	100.00%		100.00%		100.00%		
Health Science/ Diagnostics	27	28	1:1	60.71%	39.29%	1:1	1:0.9	92.86%	57.14%	35.71%	92.86%	7.14%	100.00%	81.82%
Counsellor Therapists	40	42	1:0.9	33.33%	66.67%	1:0.9	1:0.9	97.62%	30.95%	66.67%	88.10%	11.90%	92.86%	85.71%
Dental Hygienists	6	8	1:0.8		100.00%	1:	1:0.8	100.00%		100.00%	25.00%	75.00%		25.00%
Other Health & Social Care	23	29	1:0.8	13.79%	86.21%	1:0.8	1:0.8	93.10%	13.79%	79.31%	65.52%	34.48%	50.00%	68.00%
Play Therapists/ Specialists	3	3	1:1		100.00%	1:	1:1	100.00%		100.00%	66.67%	33.33%		66.67%
Vaccinators	4	4	1:0.9		100.00%	1:	1:0.9					100.00%		
H&SC, Other	76	86	1:0.9	20.93%	79.07%	1:0.9	1:0.9	91.86%	19.77%	72.09%	69.77%	30.23%	83.33%	66.18%
Pharmacists	28	34	1:0.8	14.71%	85.29%	1:0.8	1:0.8	85.29%	11.76%	73.53%	64.71%	35.29%	60.00%	65.52%
Pharmacy Technicians	5	7	1:0.7		100.00%	1:	1:0.7	100.00%		100.00%	42.86%	57.14%		42.86%
Pharmacy	33	41	1:0.8	12.20%	87.80%	1:0.8	1:0.8	87.80%	9.76%	78.05%	60.98%	39.02%	60.00%	61.11%
Psychologists	200	220	1:0.9	12.27%	87.73%	1:1	1:0.9	69.09%	9.55%	59.55%	81.82%	18.18%	100.00%	79.27%
Social Care	790	968	1:0.8	12.60%	87.40%	1:0.9	1:0.8	92.25%	11.67%	80.58%	38.12%	61.88%	46.72%	36.88%



DEC 2023	WTE DEC 2023	No. DEC 2023	WTE : No	Number Male %	Number Female %	Male WTE : No.	Female WTE : No	Perm Count %	Perm Count Male %	Perm Count Female %	Fulltime Count %	Part time Count %	FT Count Male %	FT Count Female %
Total	7,342	8,416	1:0.9	18.25%	81.75%	1:0.9	1:0.9	88.70%	16.05%	72.65%	68.07%	31.93%	83.66%	64.59%
Social Workers	164	177	1:0.9	19.77%	80.23%	1:1	1:0.9	96.05%	19.21%	76.84%	77.97%	22.03%	94.29%	73.94%
Dietitians	50	57	1:0.9	5.26%	94.74%	1:1	1:0.9	85.96%	3.51%	82.46%	71.93%	28.07%	100.00%	70.37%
Occupational Therapists	224	243	1:0.9	9.88%	90.12%	1:1	1:0.9	97.53%	9.47%	88.07%	83.13%	16.87%	100.00%	81.28%
Orthoptists	4	5	1:0.8	20.00%	80.00%	1:1	1:0.8	80.00%	20.00%	60.00%	80.00%	20.00%	100.00%	75.00%
Physiotherapists	158	186	1:0.8	16.13%	83.87%	1:0.9	1:0.8	94.09%	15.59%	78.49%	62.37%	37.63%	83.33%	58.33%
Podiatrists & Chiropodists	7	8	1:0.8		100.00%	1:	1:0.8	100.00%		100.00%	75.00%	25.00%		75.00%
Speech & Language Therapists	138	158	1:0.9	1.27%	98.73%	1:1	1:0.9	98.10%	1.27%	96.84%	77.22%	22.78%	100.00%	76.92%
Therapy Professions	580	657	1:0.9	9.13%	90.87%	1:1	1:0.9	95.59%	8.68%	86.91%	74.73%	25.27%	91.67%	73.03%
Health & Social Care Professionals	1,871	2,177	1:0.9	13.05%	86.95%	1:0.9	1:0.9	91.13%	12.03%	79.10%	59.21%	40.79%	72.89%	57.16%
Middle Management (V-VII)	396	422	1:0.9	19.43%	80.57%	1:1	1:0.9	91.47%	17.06%	74.41%	87.20%	12.80%	98.78%	84.41%
Other Administrative	8	8	1:1	12.50%	87.50%	1:1	1:0.9	87.50%	12.50%	75.00%	87.50%	12.50%	100.00%	85.71%
Administrative/ Supervisory (V to VII)	404	430	1:0.9	19.30%	80.70%	1:1	1:0.9	91.40%	16.98%	74.42%	87.21%	12.79%	98.80%	84.44%
General Administrative (III & IV)	549	627	1:0.9	13.88%	86.12%	1:1	1:0.9	91.07%	12.44%	78.63%	71.93%	28.07%	93.10%	68.52%
Clerical (III & IV)	549	627	1:0.9	13.88%	86.12%	1:1	1:0.9	91.07%	12.44%	78.63%	71.93%	28.07%	93.10%	68.52%
Executive Management	14	14	1:1	21.43%	78.57%	1:1	1:1	92.86%	14.29%	78.57%	100.00%		100.00%	100.00%
Senior Management (VIII & GM)	89	90	1:1	33.33%	66.67%	1:1	1:1	92.22%	30.00%	62.22%	98.89%	1.11%	100.00%	98.33%
Management (VIII & above)	103	104	1:1	31.73%	68.27%	1:1	1:1	92.31%	27.88%	64.42%	99.04%	0.96%	100.00%	98.59%
Management & Administrative	1,056	1,161	1:0.9	17.48%	82.52%	1:1	1:0.9	91.30%	15.50%	75.80%	80.02%	19.98%	96.55%	76.51%
Maintenance	29	31	1:0.9	93.55%	6.45%	1:0.9	1:1	100.00%	93.55%	6.45%	58.06%	41.94%	58.62%	50.00%
Technical Services	6	6	1:1	83.33%	16.67%	1:1	1:1	66.67%	50.00%	16.67%	66.67%	33.33%	60.00%	100.00%
Maintenance/ Technical	35	37	1:1	91.89%	8.11%	1:0.9	1:1	94.59%	86.49%	8.11%	59.46%	40.54%	58.82%	66.67%
Catering	65	76	1:0.9	40.79%	59.21%	1:0.9	1:0.8	97.37%	40.79%	56.58%	67.11%	32.89%	93.55%	48.89%
Household Services	192	246	1:0.8	14.23%	85.77%	1:0.9	1:0.8	93.09%	13.01%	80.08%	41.06%	58.94%	85.71%	33.65%
Other Support	34	41	1:0.8	68.29%	31.71%	1:0.9	1:0.7	75.61%	48.78%	26.83%	29.27%	70.73%	35.71%	15.38%
Portering	74	78	1:0.9	93.59%	6.41%	1:1	1:0.8	87.18%	83.33%	3.85%	88.46%	11.54%	90.41%	60.00%
Support	365	441	1:0.8	37.87%	62.13%	1:0.9	1:0.8	91.16%	33.56%	57.60%	52.83%	47.17%	80.84%	35.77%
General Support	400	478	1:0.8	42.05%	57.95%	1:0.9	1:0.8	91.42%	37.66%	53.77%	53.35%	46.65%	77.11%	36.10%
Health Promotion	33	35	1:0.9	20.00%	80.00%	1:1	1:0.9	100.00%	20.00%	80.00%	100.00%		100.00%	100.00%
Home Care Services	5	5	1:0.9		100.00%	1:	1:0.9	100.00%		100.00%	80.00%	20.00%		80.00%
Other Care Grades	168	194	1:0.9	37.11%	62.89%	1:0.9	1:0.9	91.75%	31.44%	60.31%	69.07%	30.93%	75.00%	65.57%
Pastoral Care	2	4	1:0.5	25.00%	75.00%	1:0.2	1:0.6	100.00%	25.00%	75.00%	25.00%	75.00%		33.33%
Workshop Services	44	52	1:0.8	15.38%	84.62%	1:0.9	1:0.8	75.00%	9.62%	65.38%	42.31%	57.69%	50.00%	40.91%
Care, other	252	290	1:0.9	30.34%	69.66%	1:0.9	1:0.9	90.00%	25.52%	64.48%	67.59%	32.41%	73.86%	64.85%
Attendant/ Aide	54	67	1:0.8	28.36%	71.64%	1:0.9	1:0.8	94.03%	26.87%	67.16%	41.79%	58.21%	63.16%	33.33%
Health Care Assistant/ Care Assistant	1,241	1,492	1:0.8	19.77%	80.23%	1:0.9	1:0.8	88.14%	19.10%	69.03%	56.10%	43.90%	79.32%	50.38%
Health & Social Care Assistants	55	64	1:0.9	21.88%	78.13%	1:0.9	1:0.8	56.25%	10.94%	45.31%	78.13%	21.88%	92.86%	74.00%
Health Care Assistants	1,350	1,623	1:0.8	20.21%	79.79%	1:0.9	1:0.8	87.12%	19.10%	68.02%	56.38%	43.62%	78.96%	50.66%
Patient & Client Care	1,602	1,913	1:0.8	21.75%	78.25%	1:0.9	1:0.8	87.56%	20.07%	67.49%	58.08%	41.92%	77.88%	52.57%

Employment Report by WTE, Headcount, Gender, Full-Time / Part-Time etc. DEC 2023

CHO 9 DEC 2023

DEC 2023	WTE DEC 2023	No. DEC 2023	WTE : No	Number Male %	Number Female %	Male WTE : No.	Female WTE : No	Perm Count %	Number Male %	Number Female %	Fulltime Count %	Part time Count %	FT Count Male %	FT Count Female %
Total	7,342	8,416	1:0.9	18.25%	81.75%	1:0.9	1:0.9	88.70%	16.05%	72.65%	68.07%	31.93%	83.66%	64.59%
CHO Operations	129	137	1:0.9	18.98%	81.02%	1:1	1:0.9	94.89%	17.52%	77.37%	91.97%	8.03%	96.15%	90.99%
Disabilities	3,380	4,009	1:0.8	15.47%	84.53%	1:0.9	1:0.8	89.50%	14.07%	75.43%	54.45%	45.55%	70.48%	51.52%
Mental Health	1,338	1,457	1:0.9	28.21%	71.79%	1:1	1:0.9	86.00%	23.34%	62.66%	85.93%	14.07%	95.86%	82.03%
Older People	1,001	1,123	1:0.9	21.55%	78.45%	1:0.9	1:0.9	92.70%	19.86%	72.84%	75.87%	24.13%	87.60%	72.64%
Primary Care	1,435	1,627	1:0.9	13.77%	86.23%	1:0.9	1:0.9	85.43%	11.49%	73.94%	77.14%	22.86%	91.07%	74.91%
Community Health & Wellbeing	59	63	1:0.9	20.63%	79.37%	1:1	1:0.9	100.00%	20.63%	79.37%	96.83%	3.17%	100.00%	96.00%



Employment by Grade Group DEC 2023	WTE DEC 2019	WTE DEC 2022(1)	WTE NOV 2023	WTE DEC 2023	WTE change since DEC 2019	% WTE Change since Dec 2019	WTE change since DEC 2022	% WTE Change since Dec 2022	WTE change since NOV 2023	No. DEC 2023
Overall	6,582	7,230	7,306	7,342	+760	+11.5%	+112	+1.6%	+37	8,416
Consultant Medicine	2	3	3	4	+2	+118.8%	+1	+40.0%	+1	4
Consultant Psychiatry	66	67	72	72	+7	+10.4%	+5	+8.1%	+1	78
Consultant Dentistry			1	1	+1		+1		+0	1
Consultant Paediatrics	1	1	2	2	+1	+65.3%	+1	+100.0%	+0	2
Consultants	68	71	77	79	+10	+15.0%	+8	+11.7%	+1	85
Registrar	78	104	100	97	+19	+23.9%	-8	-7.3%	-4	100
Senior Registrar	16	22	19	20	+4	+24.3%	-2	-7.6%	+0	21
Specialist Registrar	4	2	2	2	-2	-50.0%	+0	+0.5%	+0	2
Registrars	98	128	122	119	+21	+21.0%	-9	-7.2%	-3	123
Senior House Officer	64	52	81	80	+16	+24.3%	+28	+54.0%	-1	82
Interns	2		1	1	-1	-50.0%	+1		+0	1
SHO/ Interns	66	52	82	81	+15	+22.0%	+29	+56.0%	-1	83
Other Medical	25	22	19	19	-6	-23.1%	-3	-12.5%	+1	28
Dentists	31	34	37	34	+3	+8.5%	+0	+0.7%	-2	40
Medical/ Dental, other	57	56	55	54	-3	-5.5%	-3	-4.5%	-2	68
Medical & Dental	290	306	337	332	+42.3	+14.6%	+16.3	+8.3%	-4.91	+359
Director Nursing/Midwifery, Assistant	61	78	84	86	+24	+39.6%	+8	+9.9%	+2	89
Director of Nursing/Midwifery	25	29	30	31	+6	+23.6%	+2	+5.3%	+0	31
Clinical Nurse/ Midwife Manager 1	93	96	92	93	+0	+0.2%	-3	-3.0%	+1	100
Clinical Nurse/ Midwife Manager 2	216	244	259	263	+47	+21.5%	+18	+7.5%	+4	287
Clinical Nurse/ Midwife Manager 3	40	41	43	41	+1	+3.4%	+0	+0.6%	-2	43
Nurse/ Midwife Manager	435	488	508	513	+78	+18.0%	+25	+5.1%	+6	550
Advanced Nurse/ Midwife Practitioner	6	9	11	12	+6	+103.1%	+3	+34.0%	+1	12
Clinical Nurse/ Midwife Specialist	78	129	138	135	+57	+73.4%	+7	+5.1%	-3	147
Adv. Nurse/ Midwife, Candidate	1	11	14	13	+12	+1,186.9%	+1	+12.9%	-1	13
Nurse/ Midwife Specialist & AN/MP	85	149	163	160	+75	+88.5%	+11	+7.4%	-3	172
Staff Nurse [Intellectual Disability]	421	316	212	325	-96	-22.8%	+8	+2.7%	+113	388
Staff Nurse [Psychiatric]	371	363	360	319	-52	-14.0%	-44	-12.2%	-41	354
Staff Nurses [General/ Children's]	404	535	598	533	+129	+31.8%	-2	-0.3%	-64	583
Staff Nurse/ Staff Midwife	1,196	1,214	1,170	1,177	-19	-1.6%	-37	-3.1%	+7	1,325
Public Health Nurse	176	172	172	171	-4	-2.4%	-1	-0.4%	-1	201
Public Health Nurse	176	172	172	171	-4	-2.4%	-1	-0.4%	-1	201
Post-registration Nurse/ Midwife Student	26	19	20	20	-6	-23.1%	+1	+6.3%	+0	20
Nursing/ Midwifery awaiting registration	11	16	8	6	-5	-44.4%	-10	-61.9%	-2	7
Pre-registration Nurse/ Midwife Intern	18	8		17	-1	-5.6%	+9	+110.9%	+17	34
Nursing/ Midwifery Student	55	43	28	43	-12	-21.6%	+0	+0.7%	+15	61
Nursing Education/Clinical	20	20	17	17	-2	-12.5%	-3	-14.4%	0	19
Nursing/ Midwifery other	20	20	17	17	-2	-12.5%	-3	-14.4%	0	19
Nursing & Midwifery	1,966	2,087	2,058	2,082	+116.2	+5.9%	+8.4	-0.2%	23.75	+2,328
Dietitians	21	40	48	50	+28	+133.5%	+9	+22.9%	+2	57
Occupational Therapists	182	229	218	224	+42	+22.8%	-5	-2.1%	+6	243
Orthoptists	5	3	3	4	-1	-19.4%	+1	+52.2%	+1	5
Physiotherapists	144	158	158	158	+14	+10.1%	+0	+0.1%	0	186

Employment by Grade Group DEC 2023	WTE DEC 2019	WTE DEC 2022(1)	WTE NOV 2023	WTE DEC 2023	WTE change since DEC 2019	% WTE Change since Dec 2019	WTE change since DEC 2022	% WTE Change since Dec 2022	WTE change since NOV 2023	No. DEC 2023
Overall	6,582	7,230	7,306	7,342	+760	+11.5%	+112	+1.6%	+37	8,416
Podiatrists & Chiropodists	1	6	8	7	+6	+565.0%	+1	+17.1%	-1	8
Speech & Language Therapists	133	152	137	138	+5	+3.6%	-14	-9.0%	+1	158
Therapy Professions	486	587	571	580	+94	+19.3%	-7	-1.1%	+9	657
Audiology	15	8	9	8	-7	-47.4%	+0	+1.4%	-1	8
Clinical Engineering	16	13	14	14	-2	-12.5%	+1	+8.1%	+0	14
Radiographers	1	1	1	1	0	-31.0%	+0	+0.0%	+0	2
Medical Science	4	4	4	4	+0	+0.0%	+0	+0.0%	+0	4
Health Science/ Diagnostics	37	26	28	27	-10	-26.4%	+1	+4.5%	-1	28
Social Care	695	804	791	790	+95	+13.7%	-14	-1.7%	0	968
Social Care	695	804	791	790	+95	+13.7%	-14	-1.7%	0	968
Pharmacists	22	23	27	28	+6	+28.8%	+5	+22.4%	+1	34
Pharmacy Technicians	3	4	5	5	+2	+61.1%	+1	+20.0%	+0	7
Pharmacy	25	27	32	33	+8	+32.7%	+6	+22.1%	+1	41
Psychologists	164	187	199	200	+37	+22.3%	+14	+7.3%	+1	220
Psychologists	164	187	199	200	+37	+22.3%	+14	+7.3%	+1	220
Social Workers	125	161	162	164	+39	+30.9%	+3	+2.1%	+2	177
Social Workers	125	161	162	164	+39	+30.9%	+3	+2.1%	+2	177
Counsellor Therapists	42	36	41	40	-2	-5.5%	+3	+9.7%	-1	42
Dental Hygienists	6	6	6	6	0	-3.9%	0	-1.0%	0	8
Other Health & Social Care	20	17	20	23	+3	+16.4%	+6	+36.8%	+3	29
Play Therapists/ Specialists	2	1	3	3	+1	+31.6%	+2	+101.3%	+1	3
Vaccinators		4	4	4	+4		+0	+0.0%	+0	4
H&SC, Other	71	64	74	76	+5	+7.1%	+11	+17.4%	+2	86
Health & Social Care Professionals	1,603	1,856	1,857	1,871	+267.9	+16.7%	+18.2	+0.8%	13.62	+2,177
Executive Management	11	13	14	14	+3	+31.2%	+1	+7.7%	+0	14
Senior Management (VIII & GM)	69	84	87	89	+20	+29.2%	+5	+6.1%	+2	90
Management (VIII & above)	79	97	101	103	+23	+29.4%	+6	+6.3%	+2	104
Middle Management (V-VII)	199	351	391	396	+197	+98.8%	+45	+12.8%	+6	422
Other Administrative	9	9	8	8	-1	-11.3%	-1	-11.2%	+0	8
Administrative/ Supervisory (V to VII)	208	360	398	404	+196	+94.3%	+44	+12.2%	+6	430
General Administrative (III & IV)	451	522	555	549	+98	+21.7%	+27	+5.2%	-6	627
Clerical (III & IV)	451	522	555	549	+98	+21.7%	+27	+5.2%	-6	627
Management & Administrative	739	979	1,054	1,056	+317.2	+42.9%	+28.8	+7.9%	1.67	+1,161
Catering	61	62	65	65	+4	+6.7%	+3	+5.1%	0	76
Household Services	220	208	190	192	-29	-13.1%	-16	-7.9%	+2	246
Other Support	95	42	34	34	-60	-63.9%	-8	-18.2%	+0	41
Portering	76	71	74	74	-2	-2.4%	+2	+3.4%	0	78
Support	452	383	363	365	-87	-19.3%	-18	-4.8%	+2	441
Maintenance	33	31	28	29	-4	-12.1%	-1	-4.5%	+1	31
Technical Services	2	5	6	6	+4	+200.0%	+1	+23.0%	+0	6
Maintenance/ Technical	35	36	34	35	0	-0.1%	0	-0.7%	+1	37
General Support	487	419	397	400	-87.0	-17.9%	-13.0	-4.5%	2.97	+478
Attendant/ Aide	102	50	52	54	-48	-47.2%	+4	+7.8%	+2	67
Health & Social Care Assistants	12	42	51	55	+43	+348.8%	+13	+31.7%	+5	64
Health Care Assistant/ Care Assistant	1,163	1,224	1,246	1,241	+78	+6.7%	+18	+1.4%	-5	1,492
Health Care Assistants	1,278	1,315	1,349	1,350	+73	+5.7%	+35	+2.6%	+1	1,623
Home Care Services	13	8	5	5	-8	-64.4%	-3	-42.5%	+0	5

Employment by Grade Group DEC 2023	WTE DEC 2019	WTE DEC 2022(1)	WTE NOV 2023	WTE DEC 2023	WTE change since DEC 2019	% WTE Change since Dec 2019	WTE change since DEC 2022	% WTE Change since Dec 2022	WTE change since NOV 2023	No. DEC 2023
Overall	6,582	7,230	7,306	7,342	+760	+11.5%	+112	+1.6%	+37	8,416
Other Care Grades	136	172	172	168	+32	+23.6%	-4	-2.4%	-4	194
Pastoral Care	3	2	2	2	-1	-33.6%	+0	+0.3%	+0	4
Workshop Services	69	57	44	44	-25	-36.3%	-13	-22.3%	0	52
Health Promotion		30	31	33	+33		+3	+10.3%	+2	35
Care, other	221	269	254	252	+31	+14.0%	-17	-6.3%	-2	290
Patient & Client Care	1,499	1,584	1,603	1,602	+103.4	+6.9%	+6.0	+1.1%	-0.6	+1,913



CHO 9 Employment Report: DEC 2023

Month-on-Month Summary

Month-on-Month Summary	% WTE change since NOV 2023	WTE change since NOV 2023	Community Health & Wellbeing	Mental Health	Primary Care	Disabilities	Older People	CHO Operations
Consultants	+1.8%	+1.4		+0.4	+0.7	+0.2	+0.1	
Registrars	-2.6%	-3.2		-1.2	-2.0	+0.0	+0.0	
SHO/ Interns	-1.6%	-1.3		-0.5	+0.0	+0.0	-0.9	
Medical/ Dental, other	-3.2%	-1.8			-2.3	+0.5		
Medical & Dental	-1.5%	-4.9		-1.3	-3.6	+0.7	-0.7	
Nurse/ Midwife Manager	+1.1%	+5.5		+3.4	+1.6	-0.7	+1.1	+0.1
Nurse/ Midwife Specialist & AN/MP	-1.7%	-2.8		-2.6	+0.8	+0.0	-1.0	
Staff Nurse/ Staff Midwife	+0.6%	+7.2		+2.9	-3.8	+12.0	-4.1	+0.2
Public Health Nurse	-0.6%	-1.0			-1.0			
Nursing/ Midwifery Student	+53.4%	+14.9		+4.9	+0.0	+10.0		
Nursing/ Midwifery other	-1.1%	-0.2		+0.1	+0.0	-0.3		
Nursing & Midwifery	+1.2%	+23.8		+8.7	-2.4	+21.1	-3.9	+0.3
Therapy Professions	+1.5%	+8.8	-0.1	-0.1	+6.5	+2.3	+0.2	
Health Science/ Diagnostics	-3.6%	-1.0			-1.0	+0.0	+0.0	
Social Care	-0.1%	-0.5		+0.0	+0.1	-0.5	+0.0	
Pharmacy	+2.8%	+0.9		+0.1	-0.0	+0.0	+0.0	+0.8
Psychologists	+0.7%	+1.4		+1.9	-0.6	+0.2	+0.0	
Social Workers	+1.3%	+2.1		+0.9	-0.4	+1.7	+0.0	-0.1



H&SC, Other	+2.7%	+2.0		-1.1	+0.7	+0.8	+1.5	
Health & Social Care Professionals	+0.7%	+13.6	-0.1	+1.6	+5.2	+4.4	+1.8	+0.7
Management (VIII & above)	+2.0%	+2.0	-0.0	+0.0	+0.0	+2.0	+0.0	+0.0
Administrative/ Supervisory (V to VII)	+1.4%	+5.8	+0.8	+1.2	+0.0	+3.6	+0.2	-0.0
Clerical (III & IV)	-1.1%	-6.1	-0.7	-0.8	-2.2	-3.6	+1.0	+0.0
Management & Administrative	+0.2%	+1.7	+0.1	+0.4	-2.1	+2.1	+1.2	+0.0
Support	+0.4%	+1.5		+1.3	+0.0	-0.8	+0.9	+0.1
Maintenance/ Technical	+4.3%	+1.5	+0.0	+0.0		+1.5	+0.0	+0.0
General Support	+0.7%	+3.0	+0.0	+1.3	+0.0	+0.6	+0.9	+0.1
Health Care Assistants	+0.1%	+1.4		-0.6	+4.7	-2.7	+0.0	
Care, other	-0.8%	-2.0	+1.8	+0.3	-0.9	-3.1	-0.1	
Patient & Client Care	0.0%	-0.6	+1.8	-0.3	+3.7	-5.8	-0.0	



CHO 9 Employment Report: DEC 2023

Year-to-Date Summary

Year-to-Date Summary	% WTE change since DEC 2022	WTE change since DEC 2022	Community Health & Wellbeing	Mental Health	Primary Care	Disabilities	Older People	CHO Operations
Consultants	+11.7%	+8.3		+3.5	+1.4	+3.4	+0.0	
Registrars	-7.2%	-9.2		-11.3	+3.0	-1.0	+1.0	-1.0
SHO/ Interns	+56.0%	+29.0		+18.2	+4.9	+1.0	+4.9	
Medical/ Dental, other	-4.5%	-2.6			-2.3	-0.2		
Medical & Dental	+8.3%	+25.5		+10.4	+6.9	+3.2	+5.9	-1.0
Nurse/ Midwife Manager	+5.1%	+25.0		+7.9	+11.2	-0.3	+6.1	+0.1
Nurse/ Midwife Specialist & AN/MP	+7.4%	+11.0		-0.7	+10.1	+0.5	+1.1	
Staff Nurse/ Staff Midwife	-3.1%	-37.5		-36.2	+5.4	+1.6	-5.5	-2.7
Public Health Nurse	-0.4%	-0.7			+0.3		-1.0	
Nursing/ Midwifery Student	+0.7%	+0.3		-8.9	+1.2	+8.0		
Nursing/ Midwifery other	-14.4%	-2.9		-1.0	-0.9	-1.0		
Nursing & Midwifery	-0.2%	-4.8		-39.0	+27.3	+8.8	+0.7	-2.6
Therapy Professions	-1.1%	-6.5	-0.1	-7.4	+3.4	-4.0	+1.5	
Health Science/ Diagnostics	+4.5%	+1.2			+0.2	+1.0	+0.0	
Social Care	-1.7%	-13.7		+0.0	+1.6	-14.8	-0.6	
Pharmacy	+22.1%	+5.9		+3.0	+1.9	+0.0	+0.0	+1.0



Psychologists	+7.3%	+13.7		+3.3	+6.9	+3.8	-0.3	
Social Workers	+2.1%	+3.4		-1.8	+2.6	+0.8	-2.1	+3.9
H&SC, Other	+17.4%	+11.2		+1.2	+6.4	+1.1	+2.5	
Health & Social Care Professionals	+0.8%	+15.1	-0.1	-1.6	+22.9	-12.0	+1.0	+4.9
Management (VIII & above)	+6.3%	+6.1	+5.0	+1.1	+2.1	+2.2	+1.2	-5.6
Administrative/ Supervisory (V to VII)	+12.2%	+44.0	+4.8	+2.6	+7.2	+30.2	+0.1	-0.9
Clerical (III & IV)	+5.2%	+27.2	-0.1	+1.0	+16.0	+9.9	+2.6	-2.2
Management & Administrative	+7.9%	+77.2	+9.8	+4.6	+25.3	+42.3	+3.9	-8.6
Support	-4.8%	-18.4		-6.5	+1.8	-1.7	-8.0	-4.0
Maintenance/ Technical	-0.7%	-0.3	+1.0	-2.9		+2.7	+0.0	-1.0
General Support	-4.5%	-18.6	+1.0	-9.5	+1.8	+0.9	-8.0	-4.9
Health Care Assistants	+2.6%	+34.8		+2.5	-3.2	+17.8	+20.7	-2.9
Care, other	-6.3%	-17.0	+3.1	-0.1	-3.0	-17.3	+0.3	
Patient & Client Care	+1.1%	+17.9	+3.1	+2.4	-6.2	+0.5	+20.9	-2.9



CHO 9 Employment Report: DEC 2023

Year-on-Year Summary

Year-on-Year Summary	% WTE change since DEC 2022(1)	WTE change since DEC 2022(1)	Community Health & Wellbeing	Mental Health	Primary Care	Disabilities	Older People	CHO Operations
Consultants	+11.7%	+8.3		+3.5	+1.4	+3.4	+0.0	
Registrars	-7.2%	-9.2		-11.3	+3.0	-1.0	+1.0	-1.0
SHO/ Interns	+56.0%	+29.0		+18.2	+4.9	+1.0	+4.9	
Medical/ Dental, other	-4.5%	-2.6			-2.3	-0.2		
Medical & Dental	+8.3%	+25.5		+10.4	+6.9	+3.2	+5.9	-1.0
Nurse/ Midwife Manager	+5.1%	+25.0		+7.9	+11.2	-0.3	+6.1	+0.1
Nurse/ Midwife Specialist & AN/MP	+7.4%	+11.0		-0.7	+10.1	+0.5	+1.1	
Staff Nurse/ Staff Midwife	-3.1%	-37.5		-36.2	+5.4	+1.6	-5.5	-2.7
Public Health Nurse	-0.4%	-0.7			+0.3		-1.0	
Nursing/ Midwifery Student	+0.7%	+0.3		-8.9	+1.2	+8.0		
Nursing/ Midwifery other	-14.4%	-2.9		-1.0	-0.9	-1.0		
Nursing & Midwifery	-0.2%	-4.8		-39.0	+27.3	+8.8	+0.7	-2.6
Therapy Professions	-1.1%	-6.5	-0.1	-7.4	+3.4	-4.0	+1.5	
Health Science/ Diagnostics	+4.5%	+1.2			+0.2	+1.0	+0.0	
Social Care	-1.7%	-13.7		+0.0	+1.6	-14.8	-0.6	
Pharmacy	+22.1%	+5.9		+3.0	+1.9	+0.0	+0.0	+1.0
Psychologists	+7.3%	+13.7		+3.3	+6.9	+3.8	-0.3	
Social Workers	+2.1%	+3.4		-1.8	+2.6	+0.8	-2.1	+3.9

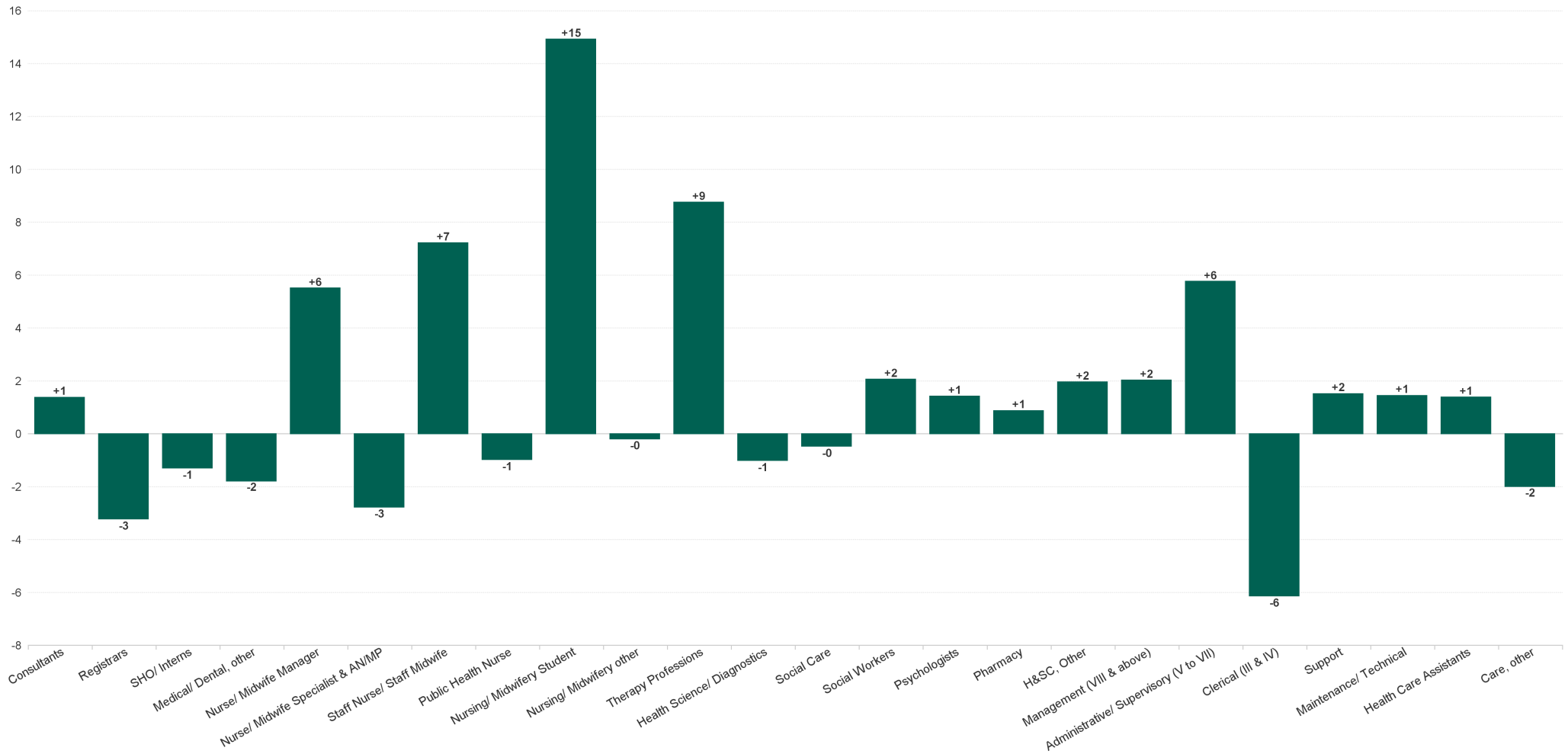


H&SC, Other	+17.4%	+11.2		+1.2	+6.4	+1.1	+2.5	
Health & Social Care Professionals	+0.8%	+15.1	-0.1	-1.6	+22.9	-12.0	+1.0	+4.9
Management (VIII & above)	+6.3%	+6.1	+5.0	+1.1	+2.1	+2.2	+1.2	-5.6
Administrative/ Supervisory (V to VII)	+12.2%	+44.0	+4.8	+2.6	+7.2	+30.2	+0.1	-0.9
Clerical (III & IV)	+5.2%	+27.2	-0.1	+1.0	+16.0	+9.9	+2.6	-2.2
Management & Administrative	+7.9%	+77.2	+9.8	+4.6	+25.3	+42.3	+3.9	-8.6
Support	-4.8%	-18.4		-6.5	+1.8	-1.7	-8.0	-4.0
Maintenance/ Technical	-0.7%	-0.3	+1.0	-2.9		+2.7	+0.0	-1.0
General Support	-4.5%	-18.6	+1.0	-9.5	+1.8	+0.9	-8.0	-4.9
Health Care Assistants	+2.6%	+34.8		+2.5	-3.2	+17.8	+20.7	-2.9
Care, other	-6.3%	-17.0	+3.1	-0.1	-3.0	-17.3	+0.3	
Patient & Client Care	+1.1%	+17.9	+3.1	+2.4	-6.2	+0.5	+20.9	-2.9



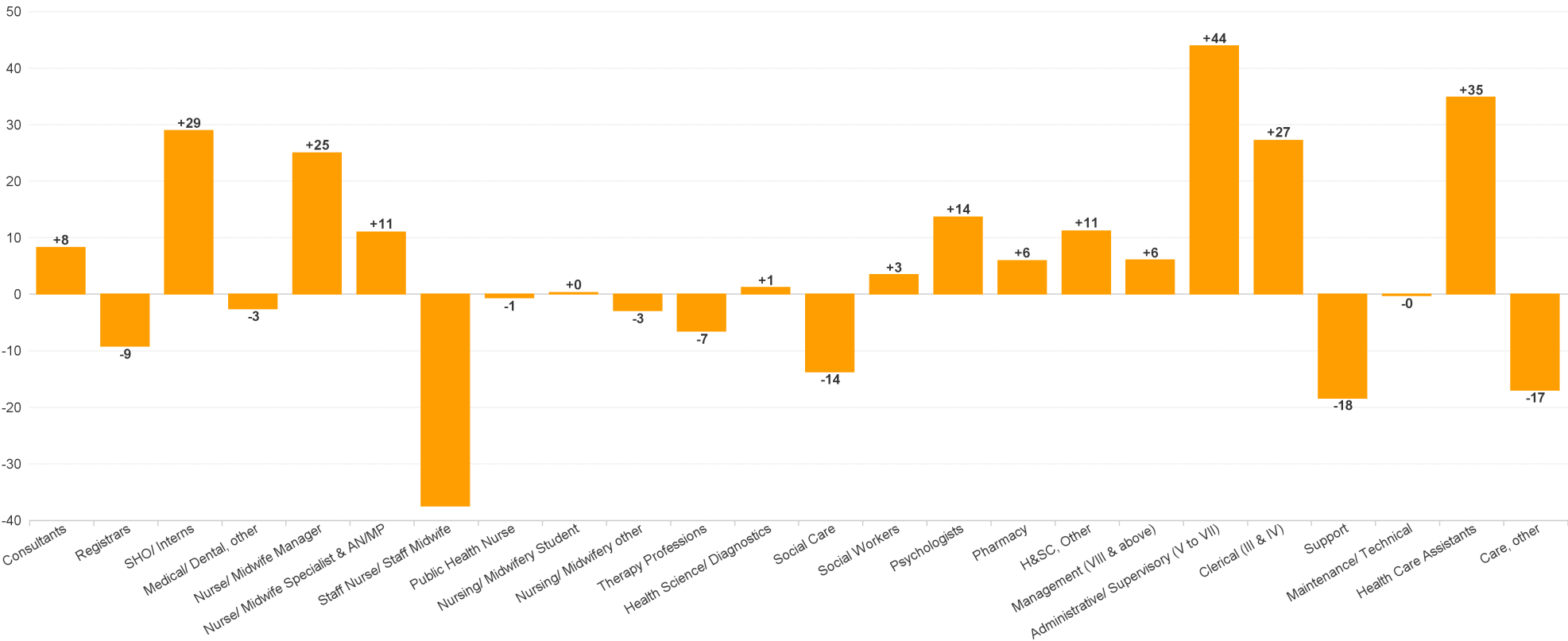
CHO 9 Employment Report: DEC 2023

Month-on-Month Summary Chart: Change since NOV 2023



CHO 9 Employment Report: DEC 2023

Year-to-Date Summary Chart: Change since 2022(1)



CHO 9 Employment Report: DEC 2023

Year-on-Year Summary Chart: Change since DEC 2022

