

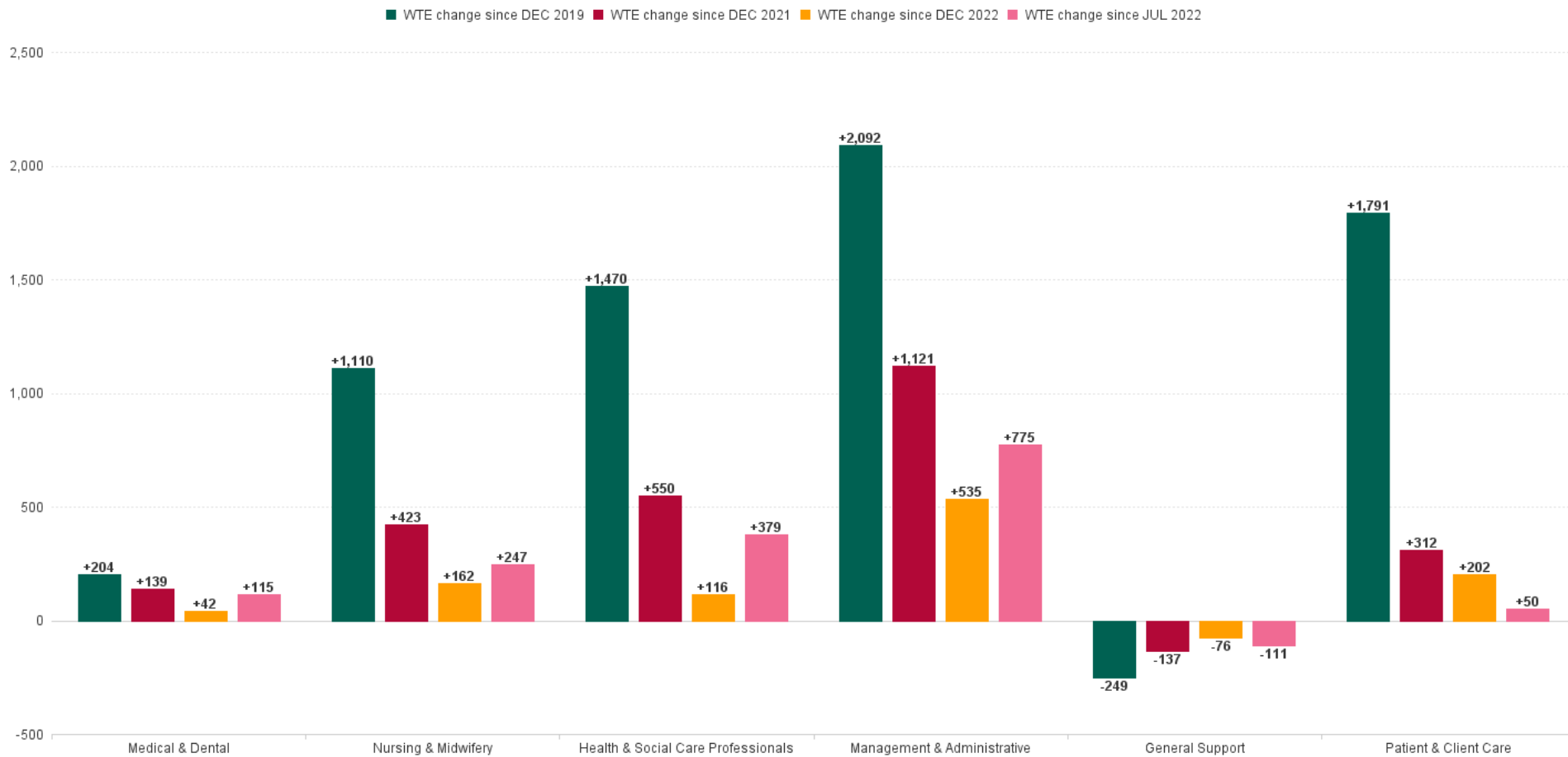
Community Services Employment Report : JUL 2023

Employment Report by Staff Group

JUL 2023	WTE DEC 2019	WTE DEC 2022	WTE JUN 2023	WTE JUL 2023	WTE change since DEC 2019	% WTE Change since Dec 2019	WTE change since DEC 2022	% WTE Change since Dec 2022	WTE change since JUN 2023	No. JUL 2023
Overall	52,085	57,523	58,542	58,502	+6,417	+12.32%	+979	+1.70%	-39	68,772
Consultants	424	472	486	484	+60	+14.14%	+12	+2.44%	-2	544
Registrars	687	798	814	885	+198	+28.83%	+87	+10.87%	+72	1,060
SHO/ Interns	319	327	309	304	-15	-4.82%	-23	-7.10%	-6	375
Medical/ Dental, other	634	629	609	596	-39	-6.09%	-33	-5.26%	-14	891
Medical & Dental	2,065	2,227	2,218	2,269	+204	+9.88%	+42	+1.89%	+50	2,870
Nurse/ Midwife Manager	3,162	3,449	3,505	3,516	+353	+11.18%	+67	+1.93%	+11	3,756
Nurse/ Midwife Specialist & AN/MP	691	1,064	1,215	1,227	+536	+77.53%	+163	+15.32%	+13	1,329
Staff Nurse/ Staff Midwife	9,008	9,366	9,300	9,233	+224	+2.49%	-134	-1.43%	-68	10,553
Public Health Nurse	1,534	1,502	1,453	1,463	-71	-4.60%	-39	-2.59%	+10	1,776
<i>Nursing/ Midwifery awaiting registration</i>	72	43	10	10	-61	-85.44%	-33	-75.97%	+0	11
<i>Post-registration Nurse/ Midwife Student</i>	98	97	51	29	-69	-70.48%	-68	-70.18%	-22	29
<i>Pre-registration Nurse/ Midwife Intern</i>	53	33	241	243	+190	+356.85%	+210	+627.03%	+3	479
Nursing/ Midwifery Student	223	174	302	283	+60	+26.92%	+109	+62.78%	-19	519
Nursing/ Midwifery other	59	70	66	66	+7	+11.99%	-4	-6.14%	+0	73
Nursing & Midwifery	14,677	15,625	15,841	15,787	+1,110	+7.56%	+162	+1.03%	-54	18,006
Therapy Professions	3,204	3,740	3,847	3,804	+600	+18.72%	+64	+1.72%	-43	4,423
Health Science/ Diagnostics	108	125	125	125	+17	+15.41%	-0	-0.31%	-1	138
Social Care	2,707	3,167	3,170	3,183	+476	+17.60%	+16	+0.50%	+13	3,730
Social Workers	807	970	1,000	987	+180	+22.30%	+16	+1.69%	-13	1,110
Psychologists	901	983	1,013	993	+91	+10.14%	+10	+1.00%	-20	1,107
Pharmacy	98	125	136	131	+33	+33.56%	+6	+4.67%	-5	165
H&SC, Other	403	471	487	475	+72	+17.98%	+4	+0.83%	-12	586
Health & Social Care Professionals	8,228	9,582	9,779	9,697	+1,470	+17.86%	+116	+1.21%	-82	11,259
Management (VIII & above)	618	827	859	837	+219	+35.44%	+10	+1.23%	-22	861
Administrative/ Supervisory (V to VII)	1,507	2,400	2,591	2,602	+1,095	+72.65%	+202	+8.43%	+11	2,761
Clerical (III & IV)	3,694	4,150	4,424	4,472	+778	+21.05%	+322	+7.76%	+48	5,145
Management & Administrative	5,819	7,377	7,874	7,911	+2,092	+35.94%	+535	+7.25%	+37	8,767
Support	2,461	2,269	2,241	2,184	-277	-11.26%	-85	-3.74%	-58	2,737
Maintenance/ Technical	406	425	433	434	+28	+6.89%	+9	+2.07%	+1	462
General Support	2,867	2,694	2,674	2,618	-249	-8.69%	-76	-2.82%	-56	3,199
Health Care Assistants	12,147	13,075	13,271	13,374	+1,227	+10.10%	+298	+2.28%	+102	15,604
Care, other	2,717	3,162	3,194	3,171	+453	+16.68%	+9	+0.29%	-24	3,757
Home Help	3,565	3,782	3,690	3,676	+111	+3.11%	-106	-2.80%	-14	5,310
Patient & Client Care	18,430	20,019	20,156	20,221	+1,791	+9.72%	+202	+1.01%	+65	24,671



WTE Change by Staff Category



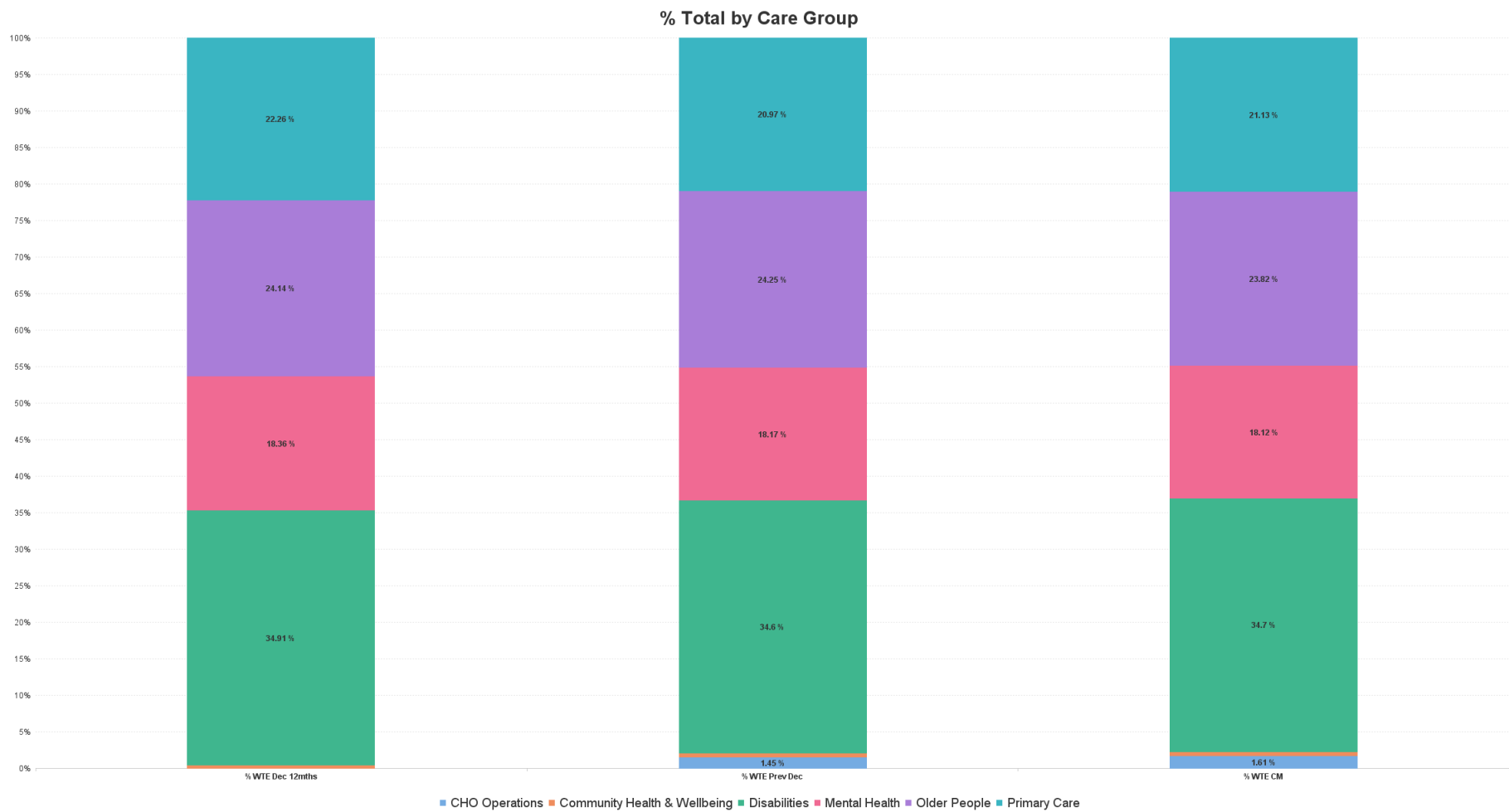
Community Services Report by CHO: JUL 2023

JUL 2023	WTE DEC 2019	WTE DEC 2022	WTE JUN 2023	WTE JUL 2023	WTE change since DEC 2019	% WTE Change since Dec 2019	WTE change since DEC 2022	% WTE Change since Dec 2022	WTE change since JUN 2023	No. JUL 2023
Overall	52,085	57,523	58,542	58,502	+6,417	+12.32%	+979	+1.70%	-39	68,772
CHO Operations		89	100	101	+101		+12	+13.76%	+1	105
Community Health & Wellbeing		28	38	37	+37		+9	+33.85%	-1	41
Disabilities	1,498	1,698	1,742	1,744	+246	+16.39%	+46	+2.69%	+2	1,931
Mental Health	953	1,024	1,060	1,056	+103	+10.83%	+32	+3.14%	-4	1,162
Older People	1,836	2,087	2,124	2,141	+306	+16.65%	+54	+2.58%	+17	2,501
Primary Care	1,182	1,472	1,528	1,526	+344	+29.13%	+54	+3.69%	-1	1,783
CHO 1	5,468	6,398	6,591	6,606	+1,137	+20.80%	+208	+3.25%	+14	7,523
CHO Operations		82	110	108	+108		+26	+32.31%	-2	113
Community Health & Wellbeing		21	46	36	+36		+15	+69.52%	-10	49
Disabilities	1,497	1,607	1,690	1,721	+224	+14.98%	+114	+7.12%	+31	2,091
Mental Health	1,308	1,329	1,344	1,323	+14	+1.11%	-6	-0.47%	-21	1,454
Older People	1,606	1,582	1,578	1,568	-38	-2.35%	-15	-0.92%	-10	1,824
Primary Care	1,134	1,351	1,316	1,303	+170	+14.98%	-47	-3.49%	-13	1,514
CHO 2	5,545	5,972	6,084	6,060	+515	+9.29%	+88	+1.47%	-24	7,045
CHO Operations		192	205	205	+205		+13	+6.50%	-0	216
Community Health & Wellbeing		38	43	42	+42		+4	+9.95%	-1	47
Disabilities	1,823	1,989	2,025	2,021	+198	+10.83%	+32	+1.63%	-4	2,410
Mental Health	795	814	822	814	+19	+2.38%	+0	+0.02%	-8	901
Older People	974	1,264	1,290	1,276	+302	+31.01%	+12	+0.95%	-14	1,559
Primary Care	764	772	822	835	+71	+9.30%	+63	+8.18%	+13	997
CHO 3	4,357	5,069	5,207	5,193	+837	+19.20%	+124	+2.45%	-14	6,130
CHO Operations			31	43	+43		+43		+12	46
Community Health & Wellbeing		52	53	45	+45		-7	-13.58%	-8	81
Disabilities	2,425	2,640	2,693	2,664	+239	+9.87%	+24	+0.91%	-29	3,153
Mental Health	1,499	1,562	1,575	1,568	+69	+4.60%	+6	+0.39%	-7	1,752
Older People	2,919	3,000	2,759	2,722	-197	-6.74%	-278	-9.28%	-37	3,643
Primary Care	1,346	1,707	1,783	1,806	+460	+34.16%	+99	+5.80%	+23	2,241
CHO 4	8,189	8,961	8,893	8,848	+659	+8.05%	-113	-1.26%	-46	10,916
CHO Operations		94	98	96	+96		+2	+2.09%	-2	100
Community Health & Wellbeing		38	49	49	+49		+11	+27.60%	-0	54
Disabilities	1,488	1,656	1,708	1,712	+224	+15.07%	+56	+3.37%	+4	2,005
Mental Health	1,177	1,224	1,287	1,291	+114	+9.66%	+67	+5.45%	+4	1,436
Older People	1,653	1,641	1,704	1,717	+63	+3.83%	+75	+4.59%	+13	2,087
Primary Care	958	1,152	1,165	1,178	+220	+22.94%	+26	+2.30%	+13	1,400
CHO 5	5,277	5,805	6,011	6,042	+765	+14.50%	+237	+4.08%	+31	7,082
CHO Operations		60	70	72	+72		+12	+19.30%	+2	77
Community Health & Wellbeing		17	15	15	+15		-2	-14.54%	-1	15
Disabilities	1,198	1,216	1,220	1,210	+12	+1.04%	-6	-0.52%	-10	1,386
Mental Health	593	650	664	663	+71	+11.95%	+14	+2.12%	-1	767
Older People	823	813	837	843	+19	+2.34%	+30	+3.69%	+6	919
Primary Care	765	864	878	877	+113	+14.73%	+13	+1.47%	-1	1,125
CHO 6	3,378	3,620	3,684	3,680	+301	+8.92%	+59	+1.64%	-5	4,289
CHO Operations		113	119	120	+120		+6	+5.67%	+1	128
Community Health & Wellbeing		49	45	45	+45		-4	-7.53%	+0	49
Disabilities	2,982	3,410	3,457	3,481	+499	+16.75%	+71	+2.09%	+24	4,124
Mental Health	835	879	905	901	+66	+7.91%	+23	+2.57%	-3	1,026
Older People	996	999	1,009	1,000	+4	+0.37%	+1	+0.09%	-9	1,133
Primary Care	1,702	1,765	1,774	1,779	+77	+4.55%	+14	+0.80%	+6	2,076
CHO 7	6,514	7,215	7,309	7,326	+812	+12.46%	+112	+1.55%	+18	8,536
CHO Operations		58	58	61	+61		+3	+4.89%	+3	63
Community Health & Wellbeing		33	46	43	+43		+11	+32.37%	-3	50



JUL 2023	WTE DEC 2019	WTE DEC 2022	WTE JUN 2023	WTE JUL 2023	WTE change since DEC 2019	% WTE Change since Dec 2019	WTE change since DEC 2022	% WTE Change since Dec 2022	WTE change since JUN 2023	No. JUL 2023
Overall	52,085	57,523	58,542	58,502	+6,417	+12.32%	+979	+1.70%	-39	68,772
Disabilities	2,162	2,345	2,413	2,410	+248	+11.47%	+65	+2.76%	-3	2,930
Mental Health	1,098	1,091	1,138	1,131	+33	+3.02%	+41	+3.71%	-7	1,244
Older People	1,488	1,489	1,553	1,551	+62	+4.20%	+61	+4.12%	-2	1,905
Primary Care	1,387	1,498	1,532	1,544	+157	+11.31%	+46	+3.04%	+11	1,827
CHO 8	6,135	6,514	6,740	6,739	+604	+9.85%	+226	+3.46%	-0	8,019
CHO Operations		144	133	134	+134		-11	-7.37%	+1	142
Community Health & Wellbeing		46	48	49	+49		+3	+6.98%	+1	52
Disabilities	3,194	3,336	3,343	3,332	+139	+4.35%	-4	-0.11%	-10	3,955
Mental Health	1,272	1,371	1,327	1,308	+36	+2.86%	-63	-4.60%	-19	1,485
Older People	870	976	1,013	1,006	+136	+15.63%	+30	+3.03%	-7	1,136
Primary Care	1,247	1,357	1,379	1,389	+142	+11.36%	+32	+2.35%	+10	1,601
CHO 9	6,582	7,230	7,243	7,217	+635	+9.65%	-13	-0.17%	-26	8,371
Disabilities	6	6	6	6	+0	+0.84%	+0	+1.18%	+0	6
Mental Health	438	511	535	547	+109	+24.96%	+36	+7.00%	+11	586
Older People	74	95	109	111	+37	+49.68%	+16	+17.09%	+2	120
Primary Care	122	127	128	127	+5	+3.97%	-0	-0.20%	-1	149
other Community Services	640	740	779	791	+151	+23.60%	+52	+7.01%	+13	861





Community Services Employment Report by HSE/S38: JUL 2023

JUL 2023	WTE DEC 2019	WTE DEC 2022	WTE JUN 2023	WTE JUL 2023	WTE change since DEC 2019	% WTE Change since Dec 2019	WTE change since DEC 2022	% WTE Change since Dec 2022	WTE change since JUN 2023	No. JUL 2023
Overall	52,085	57,523	58,542	58,502	+6,417	+12.32%	+979	+1.70%	-39	68,772
Health Service Executive	35,860	39,878	40,670	40,636	+4,776	+13.32%	+758	+1.90%	-34	47,380
Section 38 Voluntary Agencies	16,225	17,645	17,872	17,866	+1,641	+10.12%	+221	+1.25%	-6	21,392



Community Services Employment Report by HSE: JUL 2023

JUL 2023	WTE DEC 2019	WTE DEC 2022	WTE JUN 2023	WTE JUL 2023	WTE change since DEC 2019	% WTE Change since Dec 2019	WTE change since DEC 2022	% WTE Change since Dec 2022	WTE change since JUN 2023	No. JUL 2023
Total HSE	35,860	39,878	40,670	40,636	+4,776	+13.32%	+758	+1.90%	-34	47,380
Consultants	376	416	427	424	+48	+12.85%	+8	+1.85%	-3	469
Registrars	644	756	767	844	+200	+31.04%	+88	+11.67%	+78	996
SHO/ Interns	284	291	274	262	-22	-7.62%	-29	-9.87%	-12	315
Medical/ Dental, other	610	600	580	571	-39	-6.34%	-28	-4.75%	-9	825
Medical & Dental	1,914	2,063	2,048	2,102	+188	+9.82%	+39	+1.88%	+54	2,605
Nurse/ Midwife Manager	2,386	2,617	2,665	2,682	+296	+12.40%	+65	+2.47%	+16	2,849
Nurse/ Midwife Specialist & AN/MP	608	958	1,104	1,116	+508	+83.63%	+157	+16.43%	+12	1,197
Staff Nurse/ Staff Midwife	6,818	7,121	7,106	7,069	+251	+3.69%	-52	-0.72%	-37	8,035
Public Health Nurse	1,534	1,502	1,453	1,463	-71	-4.60%	-39	-2.59%	+10	1,776
Nursing/ Midwifery awaiting registration	72	41	10	10	-48	-85.44%	+6	-74.32%	+0	11
Post-registration Nurse/ Midwife Student	98	97	51	29	+43	-70.48%	-20	-70.18%	-22	29
Pre-registration Nurse Intern (COVID-19)					+1					
Pre-registration Nurse/ Midwife Intern	21	25	178	177	+4	+734.02%	-2	+596.55%	-0	353
Nursing/ Midwifery Student	191	163	239	217	+26	+13.65%	+54	+33.09%	-22	393
Nursing/ Midwifery other	40	46	47	48	+8	+21.37%	+2	+3.98%	+1	53
Nursing & Midwifery	11,576	12,408	12,615	12,595	+1,019	+8.80%	+187	+1.51%	-20	14,303
Therapy Professions	2,645	3,132	3,257	3,215	+571	+21.57%	+83	+2.65%	-42	3,742
Health Science/ Diagnostics	85	105	106	105	+20	+23.02%	+0	+0.01%	-1	115
Social Care	175	194	201	202	+27	+15.21%	+8	+4.16%	+1	226
Social Workers	601	744	774	771	+170	+28.20%	+27	+3.59%	-3	855
Psychologists	756	813	847	831	+75	+9.87%	+18	+2.20%	-16	922
Pharmacy	75	102	111	108	+33	+43.47%	+6	+6.33%	-3	136
H&SC, Other	338	418	436	424	+86	+25.48%	+6	+1.35%	-12	516
Health & Social Care Professionals	4,676	5,508	5,732	5,656	+980	+20.96%	+148	+2.68%	-76	6,512
Management (VIII & above)	471	646	677	659	+188	+40.02%	+14	+2.11%	-17	675
Administrative/ Supervisory (V to VII)	1,095	1,884	2,026	2,028	+933	+85.17%	+145	+7.69%	+2	2,143
Clerical (III & IV)	3,076	3,493	3,734	3,777	+701	+22.77%	+284	+8.14%	+43	4,295
Management & Administrative	4,643	6,022	6,437	6,465	+1,822	+39.24%	+443	+7.35%	+27	7,113
Support	1,580	1,470	1,457	1,454	-126	-7.98%	-16	-1.08%	-3	1,753
Maintenance/ Technical	278	294	296	295	+17	+6.18%	+1	+0.24%	-1	306
General Support	1,858	1,764	1,753	1,749	-109	-5.86%	-15	-0.86%	-4	2,059
Health Care Assistants	6,507	6,841	6,861	6,857	+350	+5.38%	+16	+0.24%	-3	7,701
Care, other	1,122	1,490	1,535	1,537	+415	+36.99%	+47	+3.13%	+2	1,777
Home Help	3,565	3,782	3,690	3,676	+111	+3.11%	-106	-2.80%	-14	5,310
Patient & Client Care	11,195	12,113	12,086	12,070	+876	+7.82%	-43	-0.36%	-15	14,788

Community Services Employment Report by S38 Voluntary Agencies: JUL 20

JUL 2023	WTE DEC 2019	WTE DEC 2022	WTE JUN 2023	WTE JUL 2023	WTE change since DEC 2019	% WTE Change since Dec 2019	WTE change since DEC 2022	% WTE Change since Dec 2022	WTE change since JUN 2023	No. JUL 2023
Total S38 Voluntary Agencies	16,225	17,645	17,872	17,866	+1,641	+10.12%	+221	+1.25%	-6	21,392
Consultants	48	56	59	60	+12	+24.20%	+4	+6.81%	+1	75
Registrars	43	42	47	41	-2	-4.48%	-1	-3.44%	-6	64
SHO/ Interns	36	36	35	42	+6	+17.48%	+6	+15.15%	+7	60
Medical/ Dental, other	24	29	29	24	+0	+0.00%	-5	-15.79%	-5	66
Medical & Dental	151	164	170	167	+16	+10.57%	+3	+2.00%	-3	265
Nurse/ Midwife Manager	776	832	840	834	+58	+7.42%	+2	+0.24%	-6	907
Nurse/ Midwife Specialist & AN/MP	84	106	111	111	+28	+33.21%	+6	+5.26%	+1	132
Staff Nurse/ Staff Midwife	2,190	2,245	2,194	2,163	-27	-1.23%	-82	-3.66%	-31	2,518
Nursing/ Midwifery awaiting registration		3						-100.00%		
Pre-registration Nurse/ Midwife Intern	32	8	63	66	-8	+106.03%	+5	+724.13%	+3	126
Nursing/ Midwifery Student	32	11	63	66	+34	+106.03%	+55	+511.03%	+3	126
Nursing/ Midwifery other	19	24	19	18	-1	-7.55%	-6	-25.89%	-1	20
Nursing & Midwifery	3,101	3,217	3,226	3,192	+91	+2.93%	-26	-0.79%	-34	3,703
Therapy Professions	559	607	590	589	+29	+5.25%	-19	-3.10%	-1	681
Health Science/ Diagnostics	23	20	20	20	-3	-13.16%	-0	-1.99%	-0	23
Social Care	2,531	2,974	2,969	2,981	+450	+17.77%	+8	+0.26%	+12	3,504
Social Workers	206	226	226	216	+10	+5.03%	-10	-4.58%	-10	255
Psychologists	145	170	166	162	+17	+11.54%	-8	-4.77%	-5	185
Pharmacy	23	24	25	23	+0	+0.87%	-1	-2.49%	-2	29
H&SC, Other	65	53	52	51	-14	-21.00%	-2	-3.28%	-0	70
Health & Social Care Professionals	3,552	4,074	4,047	4,042	+490	+13.79%	-32	-0.79%	-6	4,747
Management (VIII & above)	147	182	183	178	+31	+20.81%	-3	-1.90%	-5	186
Administrative/ Supervisory (V to VII)	412	516	564	574	+162	+39.33%	+58	+11.14%	+9	618
Clerical (III & IV)	618	657	690	695	+77	+12.49%	+38	+5.74%	+5	850
Management & Administrative	1,177	1,355	1,437	1,447	+270	+22.92%	+92	+6.77%	+10	1,654
Support	881	799	784	730	-151	-17.15%	-69	-8.64%	-55	984
Maintenance/ Technical	128	131	137	139	+11	+8.45%	+8	+6.19%	+2	156
General Support	1,009	930	921	869	-140	-13.90%	-61	-6.55%	-52	1,140
Health Care Assistants	5,640	6,234	6,411	6,516	+877	+15.55%	+282	+4.53%	+106	7,903
Care, other	1,595	1,671	1,659	1,634	+38	+2.40%	-38	-2.25%	-26	1,980
Patient & Client Care	7,235	7,905	8,070	8,150	+915	+12.65%	+245	+3.10%	+80	9,883

Community Services Employment Report by Grade Group: JUL 2023

CHO 1

JUL 2023	WTE DEC 2019	WTE DEC 2022	WTE JUN 2023	WTE JUL 2023	WTE change since DEC 2019	% WTE Change since Dec 2019	WTE change since DEC 2022	% WTE Change since Dec 2022	WTE change since JUN 2023	No. JUL 2023
Overall	5,468	6,398	6,591	6,606	+1,137	+20.80%	+208	+3.25%	+14	7,523
Consultants	34	39	41	40	+6	+17.49%	+1	+2.27%	-2	42
Registrars	65	77	77	87	+21	+32.77%	+10	+12.91%	+10	99
SHO/ Interns	26	22	24	21	-5	-20.88%	-1	-4.67%	-3	27
Medical/ Dental, other	80	72	60	60	-20	-25.12%	-12	-16.61%	-0	96
Medical & Dental	205	209	202	207	+2	+0.84%	-2	-1.03%	+5	264
Nurse/ Midwife Manager	350	375	392	392	+43	+12.27%	+18	+4.76%	+0	413
Nurse/ Midwife Specialist & AN/MP	102	170	190	192	+90	+88.63%	+23	+13.25%	+2	204
Staff Nurse/ Staff Midwife	1,014	1,086	1,082	1,090	+76	+7.48%	+4	+0.40%	+8	1,227
Public Health Nurse	156	152	147	146	-9	-6.07%	-6	-3.87%	-1	169
Nursing/ Midwifery Student	21	21	37	34	+13	+63.78%	+14	+66.96%	-3	61
Nursing/ Midwifery other	6	8	7	8	+2	+38.38%	-0	-2.47%	+1	9
Nursing & Midwifery	1648	1811	1856	1863	+215	+13.06%	+52	+2.89%	+7	2,083
Therapy Professions	316	405	411	404	+88	+27.72%	-2	-0.38%	-7	466
Health Science/ Diagnostics	7	9	10	10	+3	+50.69%	+1	+5.35%	+0	11
Social Care	11	21	25	25	+14	+124.56%	+5	+23.12%	-0	29
Social Workers	85	107	114	115	+30	+35.24%	+8	+7.36%	+1	124
Psychologists	60	64	72	72	+12	+20.10%	+8	+13.16%	-0	80
Pharmacy	2	3	3	3	+2	+129.33%	+1	+35.97%	-0	4
H&SC, Other	32	47	50	47	+14	+43.89%	+0	+0.26%	-3	63
Health & Social Care Professionals	513	655	686	676	+163	+31.81%	+21	+3.20%	-10	777
Management (VIII & above)	60	81	84	82	+22	+37.23%	+1	+1.63%	-2	84
Administrative/ Supervisory (V to VII)	135	243	282	283	+147	+108.70%	+40	+16.41%	+1	298
Clerical (III & IV)	456	554	560	564	+108	+23.81%	+10	+1.82%	+4	642
Management & Administrative	651	877	926	929	+278	+42.71%	+51	+5.84%	+3	1,024
Support	306	283	288	286	-20	-6.52%	+3	+1.04%	-2	353
Maintenance/ Technical	36	37	32	33	-3	-7.27%	-4	-9.62%	+1	34
General Support	342	320	320	319	-23	-6.60%	-1	-0.18%	-1	387
Health Care Assistants	1,423	1,592	1,618	1,616	+193	+13.55%	+23	+1.47%	-3	1,806
Care, other	131	170	185	182	+52	+39.66%	+13	+7.63%	-2	204
Home Help	556	764	799	814	+258	+46.30%	+50	+6.49%	+15	978
Patient & Client Care	2110	2526	2601	2612	+502	+23.80%	+86	+3.40%	+10	2,988



Community Services Employment Report by Grade Group: JUL 2023

CHO 2

JUL 2023	WTE DEC 2019	WTE DEC 2022	WTE JUN 2023	WTE JUL 2023	WTE change since DEC 2019	% WTE Change since Dec 2019	WTE change since DEC 2022	% WTE Change since Dec 2022	WTE change since JUN 2023	No. JUL 2023
Overall	5,545	5,972	6,084	6,060	+515	+9.29%	+88	+1.47%	-24	7,045
Consultants	42	43	47	47	+4	+10.61%	+3	+7.80%	-0	54
Registrars	75	91	86	106	+31	+40.82%	+15	+16.89%	+20	111
SHO/ Interns	36	43	43	29	-7	-18.80%	-14	-31.94%	-14	31
Medical/ Dental, other	59	57	59	59	-0	-0.14%	+1	+2.28%	-1	71
Medical & Dental	212	234	235	240	+28	+13.36%	+6	+2.69%	+5	267
Nurse/ Midwife Manager	309	331	338	336	+28	+8.91%	+6	+1.72%	-1	361
Nurse/ Midwife Specialist & AN/MP	93	141	160	157	+65	+69.69%	+16	+11.21%	-3	169
Staff Nurse/ Staff Midwife	898	916	907	900	+2	+0.22%	-16	-1.73%	-7	1,033
Public Health Nurse	192	187	184	179	-13	-6.83%	-9	-4.65%	-6	214
Nursing/ Midwifery Student	9	25	29	25	+16	+176.21%	-1	-3.88%	-5	48
Nursing/ Midwifery other	2	4	5	5	+3	+125.00%	+1	+12.50%	-0	5
Nursing & Midwifery	1502	1604	1623	1601	+99	+6.60%	-3	-0.22%	-23	1,830
Therapy Professions	338	421	440	427	+88	+26.11%	+5	+1.29%	-14	492
Health Science/ Diagnostics	6	10	11	11	+4	+65.59%	+1	+10.50%	+0	11
Social Care	245	300	306	315	+69	+28.34%	+15	+4.91%	+8	374
Social Workers	84	102	103	100	+16	+19.16%	-2	-2.37%	-3	118
Psychologists	73	88	94	93	+20	+27.01%	+5	+5.79%	-1	106
Pharmacy	5	6	6	6	+1	+26.93%	-0	-0.86%	-0	7
H&SC, Other	59	77	78	69	+10	+16.34%	-8	-10.77%	-10	90
Health & Social Care Professionals	811	1004	1038	1020	+209	+25.76%	+16	+1.55%	-19	1,198
Management (VIII & above)	56	70	71	71	+15	+27.32%	+1	+0.99%	+0	73
Administrative/ Supervisory (V to VII)	134	235	256	253	+120	+89.63%	+18	+7.63%	-3	266
Clerical (III & IV)	468	451	487	488	+20	+4.30%	+37	+8.12%	+1	560
Management & Administrative	657	757	813	812	+155	+23.59%	+55	+7.30%	-1	899
Support	158	140	142	137	-20	-12.98%	-3	-1.98%	-5	201
Maintenance/ Technical	68	79	78	79	+11	+15.59%	-0	-0.57%	+0	80
General Support	226	219	220	216	-10	-4.38%	-3	-1.47%	-5	281
Health Care Assistants	1,367	1,412	1,440	1,462	+94	+6.90%	+50	+3.53%	+22	1,682
Care, other	271	335	327	327	+57	+20.92%	-7	-2.24%	+0	389
Home Help	499	407	387	382	-117	-23.52%	-25	-6.16%	-5	499
Patient & Client Care	2137	2154	2153	2171	+34	+1.57%	+17	+0.80%	+18	2,570



Community Services Employment Report by Grade Group: JUL 2023

CHO 3

JUL 2023	WTE DEC 2019	WTE DEC 2022	WTE JUN 2023	WTE JUL 2023	WTE change since DEC 2019	% WTE Change since Dec 2019	WTE change since DEC 2022	% WTE Change since Dec 2022	WTE change since JUN 2023	No. JUL 2023
Overall	4,357	5,069	5,207	5,193	+837	+19.20%	+124	+2.45%	-14	6,130
Consultants	27	33	33	33	+6	+22.23%	-0	-0.30%	+0	39
Registrars	42	47	58	61	+20	+47.43%	+15	+31.64%	+4	67
SHO/ Interns	25	35	16	16	-9	-35.07%	-19	-54.15%	+0	17
Medical/ Dental, other	58	52	52	51	-7	-12.03%	-1	-1.62%	-1	67
Medical & Dental	152	167	159	162	+10	+6.63%	-5	-3.19%	+3	190
Nurse/ Midwife Manager	246	262	260	261	+15	+6.06%	-1	-0.23%	+1	278
Nurse/ Midwife Specialist & AN/MP	56	75	87	88	+32	+57.73%	+12	+16.39%	+1	95
Staff Nurse/ Staff Midwife	787	842	850	846	+59	+7.52%	+4	+0.50%	-3	951
Public Health Nurse	127	126	122	121	-6	-4.79%	-5	-3.66%	-1	152
Nursing/ Midwifery Student	20	11	27	25	+5	+23.56%	+14	+124.87%	-2	48
Nursing/ Midwifery other	4	4	4	4	+0	+0.81%	+0	+0.27%	+0	4
Nursing & Midwifery	1241	1320	1350	1346	+105	+8.46%	+25	+1.92%	-4	1,528
Therapy Professions	214	278	308	302	+89	+41.43%	+25	+8.92%	-6	351
Health Science/ Diagnostics	5	9	9	9	+4	+69.41%	+0	+0.98%	+0	11
Social Care	245	282	277	281	+36	+14.87%	-1	-0.41%	+4	323
Social Workers	59	67	67	66	+7	+11.05%	-1	-2.12%	-1	73
Psychologists	124	128	127	126	+2	+1.65%	-2	-1.58%	-2	132
Pharmacy	5	6	7	6	+1	+26.04%	+1	+9.40%	-1	8
H&SC, Other	32	36	38	37	+5	+16.18%	+2	+4.89%	-1	45
Health & Social Care Professionals	684	805	833	828	+144	+21.03%	+23	+2.80%	-5	943
Management (VIII & above)	38	56	60	59	+21	+55.33%	+3	+6.13%	-1	60
Administrative/ Supervisory (V to VII)	132	210	215	217	+85	+64.24%	+7	+3.23%	+2	231
Clerical (III & IV)	320	348	390	394	+73	+22.90%	+46	+13.20%	+3	440
Management & Administrative	491	614	666	670	+179	+36.55%	+56	+9.14%	+4	731
Support	163	142	143	145	-17	-10.64%	+3	+2.44%	+2	178
Maintenance/ Technical	77	84	88	87	+10	+12.35%	+3	+3.82%	-1	89
General Support	240	226	231	232	-8	-3.23%	+7	+2.95%	+1	267
Health Care Assistants	1,140	1,298	1,322	1,313	+173	+15.17%	+14	+1.11%	-9	1,616
Care, other	234	296	306	303	+69	+29.67%	+7	+2.26%	-3	346
Home Help	176	342	340	340	+164	+93.09%	-2	-0.70%	-0	509
Patient & Client Care	1549	1937	1968	1955	+406	+26.21%	+19	+0.97%	-13	2,471



Community Services Employment Report by Grade Group: JUL 2023

CHO 4

JUL 2023	WTE DEC 2019	WTE DEC 2022	WTE JUN 2023	WTE JUL 2023	WTE change since DEC 2019	% WTE Change since Dec 2019	WTE change since DEC 2022	% WTE Change since Dec 2022	WTE change since JUN 2023	No. JUL 2023
Overall	8,189	8,961	8,893	8,848	+659	+8.05%	-113	-1.26%	-46	10,916
Consultants	55	70	69	71	+16	+28.37%	+1	+1.22%	+1	83
Registrars	103	96	106	123	+20	+19.34%	+27	+28.60%	+18	130
SHO/ Interns	38	46	50	47	+9	+22.73%	+0	+0.80%	-4	49
Medical/ Dental, other	111	140	136	128	+17	+15.10%	-12	-8.23%	-8	243
Medical & Dental	308	352	361	369	+61	+19.83%	+17	+4.87%	+7	505
Nurse/ Midwife Manager	433	490	491	498	+66	+15.22%	+9	+1.81%	+7	542
Nurse/ Midwife Specialist & AN/MP	81	106	131	136	+55	+67.57%	+30	+28.31%	+4	147
Staff Nurse/ Staff Midwife	1,446	1,532	1,476	1,465	+20	+1.36%	-67	-4.36%	-11	1,755
Public Health Nurse	216	216	209	205	-11	-4.99%	-11	-5.19%	-3	261
Nursing/ Midwifery Student	60	18	47	42	-17	-29.07%	+24	+131.21%	-5	77
Nursing/ Midwifery other	1	1	1	1	+0	+96.08%	+0	+0.00%	+0	1
Nursing & Midwifery	2235	2363	2355	2348	+112	+5.03%	-15	-0.64%	-7	2,783
Therapy Professions	448	549	566	558	+111	+24.74%	+9	+1.64%	-7	655
Health Science/ Diagnostics	12	14	12	12	+0	+2.69%	-2	-15.13%	-0	14
Social Care	240	272	270	271	+31	+12.97%	-1	-0.45%	+1	311
Social Workers	115	147	157	155	+40	+35.01%	+8	+5.47%	-2	179
Psychologists	138	156	158	152	+14	+10.39%	-4	-2.30%	-5	174
Pharmacy	8	9	12	12	+4	+55.42%	+4	+44.95%	+0	19
H&SC, Other	60	72	77	76	+16	+26.78%	+4	+5.95%	-0	106
Health & Social Care Professionals	1020	1219	1252	1238	+217	+21.29%	+18	+1.49%	-14	1,458
Management (VIII & above)	73	90	104	99	+26	+35.77%	+9	+9.51%	-5	101
Administrative/ Supervisory (V to VII)	161	254	281	287	+126	+78.48%	+33	+13.06%	+6	309
Clerical (III & IV)	505	572	596	605	+101	+19.93%	+33	+5.79%	+9	729
Management & Administrative	738	916	981	991	+253	+34.26%	+75	+8.17%	+10	1,139
Support	337	353	340	299	-38	-11.34%	-55	-15.44%	-42	378
Maintenance/ Technical	22	22	22	20	-2	-8.57%	-2	-7.45%	-2	26
General Support	359	375	363	319	-40	-11.17%	-56	-14.97%	-44	404
Health Care Assistants	1,954	2,135	2,091	2,126	+172	+8.80%	-8	-0.39%	+35	2,460
Care, other	450	524	543	525	+75	+16.68%	+0	+0.09%	-19	645
Home Help	1,124	1,076	947	932	-192	-17.06%	-144	-13.38%	-15	1,522
Patient & Client Care	3528	3735	3582	3583	+55	+1.57%	-152	-4.07%	+1	4,627



Community Services Employment Report by Grade Group: JUL 2023

CHO 5

JUL 2023	WTE DEC 2019	WTE DEC 2022	WTE JUN 2023	WTE JUL 2023	WTE change since DEC 2019	% WTE Change since Dec 2019	WTE change since DEC 2022	% WTE Change since Dec 2022	WTE change since JUN 2023	No. JUL 2023
Overall	5,277	5,805	6,011	6,042	+765	+14.50%	+237	+4.08%	+31	7,082
Consultants	30	36	35	34	+4	+13.23%	-2	-5.55%	-0	37
Registrars	29	41	52	62	+33	+115.21%	+21	+50.53%	+10	64
SHO/ Interns	37	32	27	26	-11	-29.19%	-6	-18.99%	-0	27
Medical/ Dental, other	65	75	75	73	+8	+12.62%	-2	-2.54%	-2	102
Medical & Dental	161	185	189	196	+35	+21.59%	+11	+5.88%	+7	230
Nurse/ Midwife Manager	345	375	375	378	+32	+9.36%	+2	+0.64%	+2	399
Nurse/ Midwife Specialist & AN/MP	53	112	138	142	+89	+167.86%	+30	+26.95%	+4	152
Staff Nurse/ Staff Midwife	962	982	989	996	+34	+3.55%	+14	+1.40%	+6	1,147
Public Health Nurse	176	165	163	162	-14	-7.84%	-2	-1.44%	-0	195
Nursing/ Midwifery Student	8	11	31	32	+25	+312.88%	+22	+203.37%	+1	58
Nursing/ Midwifery other	4	4	5	5	+1	+21.40%	+1	+22.50%	-0	6
Nursing & Midwifery	1549	1649	1702	1715	+167	+10.78%	+67	+4.03%	+13	1,957
Therapy Professions	325	369	400	399	+73	+22.52%	+30	+8.05%	-1	454
Health Science/ Diagnostics	4	7	12	11	+7	+184.47%	+3	+44.52%	-1	12
Social Care	164	174	178	180	+16	+9.69%	+6	+3.55%	+2	211
Social Workers	61	70	73	72	+11	+18.08%	+2	+3.11%	-1	80
Psychologists	79	80	86	86	+7	+8.87%	+6	+7.65%	-1	96
Pharmacy	1	3	3	3	+2	+187.00%	+0	+0.70%	-0	3
H&SC, Other	34	50	52	50	+16	+46.74%	-0	-0.32%	-2	56
Health & Social Care Professionals	668	752	803	800	+132	+19.76%	+47	+6.29%	-4	912
Management (VIII & above)	44	72	74	71	+27	+60.68%	-1	-1.95%	-3	72
Administrative/ Supervisory (V to VII)	130	215	245	243	+112	+86.23%	+27	+12.70%	-2	253
Clerical (III & IV)	329	398	424	437	+108	+32.90%	+39	+9.91%	+13	494
Management & Administrative	504	686	743	751	+247	+49.14%	+65	+9.54%	+8	819
Support	303	279	275	276	-26	-8.75%	-2	-0.86%	+1	346
Maintenance/ Technical	32	29	30	30	-2	-5.45%	+1	+1.87%	-0	33
General Support	334	308	305	306	-28	-8.44%	-2	-0.60%	+1	379
Health Care Assistants	1,178	1,281	1,348	1,362	+184	+15.63%	+82	+6.38%	+14	1,535
Care, other	218	297	291	286	+68	+31.00%	-11	-3.70%	-5	349
Home Help	665	648	629	626	-39	-5.91%	-22	-3.40%	-3	901
Patient & Client Care	2061	2225	2268	2274	+212	+10.31%	+49	+2.19%	+6	2,785



Community Services Employment Report by Grade Group: JUL 2023

CHO 6

JUL 2023	WTE DEC 2019	WTE DEC 2022	WTE JUN 2023	WTE JUL 2023	WTE change since DEC 2019	% WTE Change since Dec 2019	WTE change since DEC 2022	% WTE Change since Dec 2022	WTE change since JUN 2023	No. JUL 2023
Overall	3,378	3,620	3,684	3,680	+301	+8.92%	+59	+1.64%	-5	4,289
Consultants	48	58	61	61	+13	+27.13%	+3	+5.61%	+0	73
Registrars	49	63	61	62	+14	+27.82%	-1	-1.59%	+1	101
SHO/ Interns	16	16	15	20	+4	+27.68%	+4	+22.92%	+5	33
Medical/ Dental, other	51	49	48	47	-4	-7.61%	-1	-2.49%	-1	69
Medical & Dental	164	186	185	191	+27	+16.52%	+5	+2.54%	+6	276
Nurse/ Midwife Manager	211	210	214	213	+2	+1.08%	+3	+1.41%	-1	223
Nurse/ Midwife Specialist & AN/MP	21	37	56	54	+34	+162.54%	+17	+47.68%	-1	60
Staff Nurse/ Staff Midwife	542	556	564	555	+13	+2.41%	-1	-0.13%	-9	617
Public Health Nurse	117	99	95	100	-17	-14.74%	+1	+0.64%	+4	119
Nursing/ Midwifery Student	14	7	11	7	-7	-48.15%	-0	-4.24%	-4	12
Nursing/ Midwifery other	2	5	3	4	+2	+100.00%	-1	-15.97%	+1	4
Nursing & Midwifery	905	913	943	932	+27	+3.00%	+19	+2.11%	-10	1,035
Therapy Professions	238	252	258	256	+18	+7.53%	+4	+1.56%	-2	311
Health Science/ Diagnostics	18	17	15	16	-3	-13.94%	-1	-8.31%	+0	19
Social Care	364	413	407	408	+44	+12.07%	-5	-1.23%	+1	460
Social Workers	57	71	73	73	+16	+28.03%	+2	+2.68%	-0	81
Psychologists	56	68	69	66	+10	+17.58%	-1	-2.20%	-3	83
Pharmacy	4	9	8	7	+3	+92.08%	-2	-19.93%	-1	9
H&SC, Other	14	17	16	19	+5	+32.26%	+2	+13.48%	+3	23
Health & Social Care Professionals	752	847	848	845	+93	+12.41%	-2	-0.19%	-2	986
Management (VIII & above)	68	95	89	88	+20	+29.12%	-8	-8.07%	-1	94
Administrative/ Supervisory (V to VII)	170	241	253	244	+74	+43.29%	+3	+1.09%	-9	271
Clerical (III & IV)	237	259	271	271	+33	+14.11%	+11	+4.41%	-0	312
Management & Administrative	475	596	612	602	+127	+26.71%	+6	+1.07%	-10	677
Support	191	177	176	177	-14	-7.11%	+1	+0.51%	+1	213
Maintenance/ Technical	23	22	25	25	+3	+11.25%	+3	+12.59%	+0	28
General Support	214	199	201	203	-11	-5.16%	+4	+1.87%	+2	241
Health Care Assistants	538	556	578	576	+38	+6.99%	+20	+3.57%	-2	651
Care, other	330	324	318	331	+1	+0.16%	+7	+2.20%	+12	423
Patient & Client Care	869	880	896	907	+38	+4.39%	+27	+3.07%	+11	1,074



Community Services Employment Report by Grade Group: JUL 2023

CHO 7

JUL 2023	WTE DEC 2019	WTE DEC 2022	WTE JUN 2023	WTE JUL 2023	WTE change since DEC 2019	% WTE Change since Dec 2019	WTE change since DEC 2022	% WTE Change since Dec 2022	WTE change since JUN 2023	No. JUL 2023
Overall	6,514	7,215	7,309	7,326	+812	+12.46%	+112	+1.55%	+18	8,536
Consultants	60	63	66	66	+6	+10.31%	+3	+4.44%	-0	72
Registrars	95	104	103	99	+4	+4.32%	-5	-4.48%	-4	141
SHO/ Interns	36	47	40	51	+15	+41.97%	+4	+9.22%	+11	74
Medical/ Dental, other	80	63	62	64	-17	-20.93%	+0	+0.65%	+2	93
Medical & Dental	271	276	271	279	+8	+3.12%	+3	+1.03%	+9	380
Nurse/ Midwife Manager	396	455	473	471	+75	+18.95%	+16	+3.61%	-2	503
Nurse/ Midwife Specialist & AN/MP	94	133	144	146	+52	+55.41%	+13	+9.79%	+2	161
Staff Nurse/ Staff Midwife	993	1,060	1,064	1,042	+50	+5.00%	-17	-1.63%	-21	1,189
Public Health Nurse	175	164	162	170	-5	-2.98%	+6	+3.65%	+8	207
Nursing/ Midwifery Student	32	28	32	29	-3	-8.53%	+2	+5.97%	-3	53
Nursing/ Midwifery other	10	11	11	10	-0	-4.18%	-2	-15.98%	-2	12
Nursing & Midwifery	1700	1851	1886	1869	+168	+9.89%	+18	+0.97%	-18	2,125
Therapy Professions	450	490	482	476	+26	+5.72%	-15	-2.99%	-6	546
Health Science/ Diagnostics	3	11	10	10	+7	+225.47%	-1	-6.01%	+0	12
Social Care	371	477	473	477	+106	+28.57%	-0	-0.02%	+4	529
Social Workers	105	123	125	124	+19	+18.64%	+1	+1.08%	-1	139
Psychologists	81	96	102	101	+20	+24.76%	+4	+4.38%	-1	112
Pharmacy	40	41	42	41	+1	+2.37%	+0	+0.24%	-1	48
H&SC, Other	44	45	45	46	+2	+3.89%	+1	+1.85%	+1	54
Health & Social Care Professionals	1094	1284	1279	1275	+181	+16.56%	-9	-0.69%	-4	1,440
Management (VIII & above)	73	109	107	102	+30	+40.48%	-7	-6.10%	-4	104
Administrative/ Supervisory (V to VII)	182	287	297	301	+119	+65.20%	+15	+5.09%	+5	316
Clerical (III & IV)	351	439	455	459	+108	+30.94%	+20	+4.63%	+4	521
Management & Administrative	606	834	858	863	+257	+42.40%	+28	+3.38%	+5	941
Support	410	382	371	375	-36	-8.68%	-7	-1.89%	+4	471
Maintenance/ Technical	41	46	47	48	+7	+16.90%	+2	+4.48%	+1	55
General Support	452	428	418	423	-29	-6.35%	-5	-1.21%	+5	526
Health Care Assistants	1,655	1,752	1,800	1,817	+162	+9.80%	+65	+3.70%	+17	2,131
Care, other	610	659	661	666	+55	+9.06%	+7	+1.07%	+4	755
Home Help	127	131	135	135	+8	+6.54%	+5	+3.67%	+0	238
Patient & Client Care	2392	2541	2597	2618	+226	+9.44%	+77	+3.02%	+21	3,124



Community Services Employment Report by Grade Group: JUL 2023

CHO 8

JUL 2023	WTE DEC 2019	WTE DEC 2022	WTE JUN 2023	WTE JUL 2023	WTE change since DEC 2019	% WTE Change since Dec 2019	WTE change since DEC 2022	% WTE Change since Dec 2022	WTE change since JUN 2023	No. JUL 2023
Overall	6,135	6,514	6,740	6,739	+604	+9.85%	+226	+3.46%	-0	8,019
Consultants	42	42	43	43	+1	+2.20%	+1	+2.18%	-0	46
Registrars	106	122	120	137	+31	+29.53%	+15	+12.07%	+17	141
SHO/ Interns	38	29	34	32	-6	-14.79%	+3	+11.89%	-1	33
Medical/ Dental, other	72	65	61	59	-13	-18.35%	-6	-9.06%	-1	78
Medical & Dental	259	259	258	272	+13	+5.14%	+13	+5.12%	+14	298
Nurse/ Midwife Manager	372	376	371	368	-3	-0.92%	-8	-2.08%	-2	398
Nurse/ Midwife Specialist & AN/MP	100	131	142	142	+43	+42.83%	+11	+8.67%	+1	157
Staff Nurse/ Staff Midwife	998	1,023	1,028	1,021	+23	+2.35%	-2	-0.17%	-6	1,169
Public Health Nurse	199	220	208	207	+8	+4.08%	-13	-5.97%	-1	249
Nursing/ Midwifery Student	4	10	40	43	+39	+868.30%	+34	+349.07%	+3	80
Nursing/ Midwifery other	9	10	11	11	+2	+17.07%	+1	+6.99%	+0	12
Nursing & Midwifery	1682	1770	1799	1794	+111	+6.62%	+23	+1.31%	-6	2,065
Therapy Professions	377	378	400	398	+21	+5.56%	+20	+5.22%	-2	482
Health Science/ Diagnostics	7	13	12	12	+5	+67.22%	-1	-8.82%	-0	13
Social Care	368	421	432	430	+62	+16.87%	+9	+2.03%	-2	525
Social Workers	88	108	107	106	+19	+21.17%	-2	-1.42%	-1	121
Psychologists	120	111	110	108	-12	-9.91%	-3	-2.44%	-2	118
Pharmacy	7	11	12	12	+4	+59.97%	+0	+3.47%	-0	15
H&SC, Other	52	61	58	59	+6	+12.06%	-2	-3.33%	+1	67
Health & Social Care Professionals	1019	1103	1131	1124	+105	+10.33%	+21	+1.93%	-6	1,341
Management (VIII & above)	62	84	88	84	+21	+33.90%	-1	-0.64%	-4	87
Administrative/ Supervisory (V to VII)	176	240	251	256	+79	+44.90%	+15	+6.41%	+4	268
Clerical (III & IV)	507	532	610	617	+110	+21.78%	+85	+16.04%	+7	719
Management & Administrative	746	856	949	957	+211	+28.26%	+100	+11.70%	+7	1,074
Support	127	105	106	107	-21	-16.25%	+2	+1.88%	+1	136
Maintenance/ Technical	69	61	69	69	+0	+0.04%	+7	+12.12%	+0	71
General Support	196	166	175	175	-21	-10.54%	+9	+5.67%	+1	207
Health Care Assistants	1,577	1,670	1,695	1,696	+118	+7.49%	+26	+1.54%	+0	2,044
Care, other	237	275	279	274	+36	+15.30%	-1	-0.29%	-5	327
Home Help	418	415	453	448	+30	+7.13%	+33	+8.02%	-5	663
Patient & Client Care	2233	2359	2428	2417	+184	+8.26%	+58	+2.47%	-11	3,034



Community Services Employment Report by Grade Group: JUL 2023

CHO 9

JUL 2023	WTE DEC 2019	WTE DEC 2022	WTE JUN 2023	WTE JUL 2023	WTE change since DEC 2019	% WTE Change since Dec 2019	WTE change since DEC 2022	% WTE Change since Dec 2022	WTE change since JUN 2023	No. JUL 2023
Overall	6,582	7,230	7,243	7,217	+635	+9.65%	-13	-0.17%	-26	8,371
Consultants	68	71	72	71	+2	+3.43%	+0	+0.44%	-1	78
Registrars	98	128	123	120	+22	+22.12%	-8	-6.32%	-3	155
SHO/ Interns	66	52	58	59	-7	-10.84%	+7	+13.95%	+1	79
Medical/ Dental, other	57	56	56	55	-2	-3.70%	-2	-2.67%	-2	72
Medical & Dental	290	306	309	304	+15	+5.11%	-2	-0.67%	-4	384
Nurse/ Midwife Manager	435	488	502	508	+73	+16.77%	+20	+4.01%	+6	547
Nurse/ Midwife Specialist & AN/MP	85	149	157	160	+75	+88.42%	+11	+7.37%	+3	172
Staff Nurse/ Staff Midwife	1,196	1,214	1,185	1,158	-38	-3.15%	-56	-4.64%	-27	1,301
Public Health Nurse	176	172	163	173	-3	-1.71%	+1	+0.29%	+9	210
Nursing/ Midwifery Student	55	43	44	44	-11	-19.52%	+1	+3.31%	+0	82
Nursing/ Midwifery other	20	20	16	16	-3	-16.89%	-4	-18.63%	+0	18
Nursing & Midwifery	1966	2087	2068	2059	+93	+4.75%	-28	-1.33%	-9	2,330
Therapy Professions	486	587	571	575	+88	+18.14%	-12	-2.04%	+3	656
Health Science/ Diagnostics	37	26	28	28	-9	-23.64%	+2	+8.36%	+0	29
Social Care	695	804	798	793	+98	+14.14%	-11	-1.34%	-5	965
Social Workers	125	161	163	158	+33	+26.33%	-2	-1.46%	-5	175
Psychologists	164	187	190	184	+20	+12.28%	-3	-1.51%	-6	201
Pharmacy	25	27	28	27	+2	+9.43%	+0	+0.63%	-1	36
H&SC, Other	71	64	69	67	-3	-4.75%	+3	+4.36%	-2	77
Health & Social Care Professionals	1603	1856	1848	1833	+230	+14.35%	-23	-1.23%	-15	2,139
Management (VIII & above)	79	97	102	99	+19	+24.47%	+2	+2.20%	-4	101
Administrative/ Supervisory (V to VII)	208	360	387	398	+190	+91.46%	+38	+10.57%	+11	421
Clerical (III & IV)	451	522	547	546	+95	+20.96%	+24	+4.60%	-1	630
Management & Administrative	739	979	1037	1043	+304	+41.17%	+64	+6.56%	+6	1,152
Support	452	383	377	359	-93	-20.48%	-24	-6.24%	-18	438
Maintenance/ Technical	35	36	35	35	-1	-1.87%	-1	-2.50%	-0	37
General Support	487	419	412	394	-93	-19.13%	-25	-5.92%	-18	475
Health Care Assistants	1,278	1,315	1,311	1,332	+54	+4.25%	+17	+1.26%	+21	1,598
Care, other	221	269	259	253	+32	+14.45%	-16	-5.93%	-7	293
Patient & Client Care	1499	1584	1570	1585	+86	+5.75%	+1	+0.04%	+15	1,891



Community Services Employment Report by Grade Group: JUL 2023

other Community Services

JUL 2023	WTE DEC 2019	WTE DEC 2022	WTE JUN 2023	WTE JUL 2023	WTE change since DEC 2019	% WTE Change since Dec 2019	WTE change since DEC 2022	% WTE Change since Dec 2022	WTE change since JUN 2023	No. JUL 2023
Overall	640	740	779	791	+151	+23.60%	+52	+7.01%	+13	861
Consultant Medicine	1	1	1	1	+0	+0.00%	+0	+0.00%	+0	1
Consultant Psychiatry	16	16	17	17	+1	+8.64%	+1	+7.75%	-0	19
Consultants	17	17	18	18	+1	+8.12%	+1	+7.28%	-0	20
Registrar	23	26	24	25	+2	+6.96%	-1	-4.80%	+0	45
Senior Registrar	2	4	3	3	+1	+30.50%	-1	-34.42%	-0	6
Registrars	25	30	27	27	+2	+8.84%	-3	-8.75%	+0	51
Senior House Officer	2	5	4	3	+1	+77.42%	-2	-45.00%	-1	5
SHO/ Interns	2	5	4	3	+1	+77.42%	-2	-45.00%	-1	5
Other Medical	0				-0	-100.00%				
Medical/ Dental, other	0				-0	-100.00%				
Medical & Dental	44	52	50	48	+4	+10.11%	-4	-7.06%	-2	76
Clinical Nurse/ Midwife Manager	57	76	77	77	+21	+36.11%	+1	+1.50%	+0	80
Director Nursing/Midwifery, Assistant	6	7	7	8	+2	+25.00%	+1	+15.44%	+1	8
Director of Nursing/Midwifery	3	5	5	4	+1	+33.33%	-1	-19.19%	-1	4
Nurse/ Midwife Manager	66	88	89	89	+23	+34.91%	+1	+1.43%	+0	92
Advanced Nurse/ Midwife Practitioner	1	3	3	3	+2	+200.00%	+0	+1.35%	+0	3
Clinical Nurse/ Midwife Specialist	7	8	8	7	+0	+3.31%	-1	-6.84%	-0	9
Nurse/ Midwife Specialist & AN/MP	8	11	11	10	+2	+27.15%	-1	-4.64%	-0	12
Staff Nurse [Psychiatric]	167	150	151	155	-12	-7.17%	+5	+3.26%	+3	159
Staff Nurses [General/ Children's]	7	6	4	4	-3	-42.71%	-2	-34.58%	-0	5
Staff Nurse/ Staff Midwife	174	156	155	159	-15	-8.60%	+3	+1.77%	+3	164
Pre-registration Nurse/ Midwife Intern			1						-1	
Nursing/ Midwifery Student			1						-1	
Nursing Education/Clinical	1	2	2	2	+1	+100.00%	+0	+1.52%	+0	2
Nursing/ Midwifery other	1	2	2	2	+1	+100.00%	+0	+1.52%	+0	2
Nursing & Midwifery	249	257	258	261	+11	+4.57%	+4	+1.38%	+3	270
Occupational Therapists	11	10	10	9	-2	-14.18%	-0	-2.98%	-1	10
Therapy Professions	11	10	10	9	-2	-14.18%	-0	-2.98%	-1	10
Biochemists	8	8	6	6	-2	-25.82%	-2	-26.68%	+0	6
Radiographers	1				-1	-100.00%				
Health Science/ Diagnostics	9	8	6	6	-3	-34.41%	-2	-26.68%	+0	6
Social Care	4	3	3	3	-1	-21.75%	-0	-0.36%	-0	3
Social Care	4	3	3	3	-1	-21.75%	-0	-0.36%	-0	3
Social Workers	29	15	18	18	-11	-37.60%	+3	+18.53%	+0	20
Social Workers	29	15	18	18	-11	-37.60%	+3	+18.53%	+0	20
Psychologists	7	6	5	5	-2	-28.57%	-1	-21.63%	+0	5
Psychologists	7	6	5	5	-2	-28.57%	-1	-21.63%	+0	5
Pharmacists	2	7	9	8	+7	+382.66%	+1	+14.38%	-1	10
Pharmacy Technicians	1	5	5	6	+5	+462.00%	+1	+12.40%	+0	6
Pharmacy	3	12	14	14	+11	+411.72%	+2	+13.58%	-0	16
Counsellor Therapists	3	2	5	5	+2	+64.95%	+2	+92.77%	+0	5
H&SC, Other	3	2	5	5	+2	+64.95%	+2	+92.77%	+0	5



Community Services Employment Report by Grade Group: JUL 2023

JUL 2023	WTE DEC 2019	WTE DEC 2022	WTE JUN 2023	WTE JUL 2023	WTE change since DEC 2019	% WTE Change since Dec 2019	WTE change since DEC 2022	% WTE Change since Dec 2022	WTE change since JUN 2023	No. JUL 2023
Overall	640	740	779	791	+151	+23.60%	+52	+7.01%	+13	861
Health & Social Care Professionals	65	57	61	60	-5	-7.69%	+3	+5.38%	-1	65
Executive Management	17	16	18	18	+0	+0.17%	+1	+6.31%	-0	18
Senior Management (VIII & GM)	48	57	63	66	+18	+37.53%	+9	+16.43%	+3	67
Management (VIII & above)	65	73	81	83	+18	+27.53%	+10	+14.15%	+3	85
Middle Management (V-VII)	78	114	123	120	+42	+54.53%	+7	+5.79%	-3	128
Administrative/ Supervisory (V to VII)	78	114	123	120	+42	+54.53%	+7	+5.79%	-3	128
General Administrative (III & IV)	70	75	84	90	+20	+28.25%	+16	+21.04%	+6	98
Clerical (III & IV)	70	75	84	90	+20	+28.25%	+16	+21.04%	+6	98
Management & Administrative	214	261	288	294	+80	+37.61%	+33	+12.48%	+6	311
Catering	3	8	7	8	+5	+162.00%	+0	+0.90%	+1	8
Household Services	6	9	12	11	+5	+80.19%	+2	+24.33%	-1	12
Other Labs & Associated	2	1	2	2	-0	-5.21%	+1	+217.46%	-0	2
Portering	3	8	1	1	-2	-66.67%	-7	-87.41%	+0	1
Support	14	25	22	22	+8	+53.98%	-3	-13.05%	-0	23
Maintenance	3	9	7	8	+5	+174.00%	-1	-8.36%	+1	9
Maintenance/ Technical	3	9	7	8	+5	+174.00%	-1	-8.36%	+1	9
General Support	17	34	29	30	+13	+74.77%	-4	-11.83%	+1	32
Attendant/ Aide	8	12	4	4	-4	-50.31%	-8	-65.99%	+0	8
Health Care Assistant/ Care Assistant	27	50	57	62	+35	+127.34%	+12	+23.90%	+5	63
Health & Social Care Assistants	2	3	7	9	+8	+507.33%	+6	+213.06%	+2	10
Health Care Assistants	37	65	69	75	+38	+103.97%	+10	+16.07%	+6	81
Other Care Grades	15	13	23	22	+7	+49.33%	+9	+73.35%	-0	24
Pastoral Care	1	0	1	1	+1	+100.00%	+1	+112.77%	+0	1
Workshop Services		1	1	1	+1		+0	+1.16%	+0	1
Care, other	15	14	24	24	+9	+56.61%	+10	+70.28%	-0	26
Patient & Client Care	52	79	93	99	+47	+89.97%	+20	+25.83%	+6	107



Community Services Employment Report by Grade Group: JUL 2023

CHO 1

JUL 2023	WTE DEC 2019	WTE DEC 2022	WTE JUN 2023	WTE JUL 2023	WTE change since DEC 2019	% WTE Change since Dec 2019	WTE change since DEC 2022	% WTE Change since Dec 2022	WTE change since JUN 2023	No. JUL 2023
Overall	5,468	6,398	6,591	6,606	+1,137	+20.80%	+208	+3.25%	+14	7,523
Consultants	34	39	41	40	+6	+17.49%	+1	+2.27%	-2	42
Registrars	65	77	77	87	+21	+32.77%	+10	+12.91%	+10	99
SHO/ Interns	26	22	24	21	-5	-20.88%	-1	-4.67%	-3	27
Medical/ Dental, other	80	72	60	60	-20	-25.12%	-12	-16.61%	-0	96
Medical & Dental	205	209	202	207	+2	+0.84%	-2	-1.03%	+5	264
Nurse/ Midwife Manager	350	375	392	392	+43	+12.27%	+18	+4.76%	+0	413
Nurse/ Midwife Specialist & AN/MP	102	170	190	192	+90	+88.63%	+23	+13.25%	+2	204
Staff Nurse/ Staff Midwife	1,014	1,086	1,082	1,090	+76	+7.48%	+4	+0.40%	+8	1,227
Public Health Nurse	156	152	147	146	-9	-6.07%	-6	-3.87%	-1	169
Nursing/ Midwifery Student	21	21	37	34	+13	+63.78%	+14	+66.96%	-3	61
Nursing/ Midwifery other	6	8	7	8	+2	+38.38%	-0	-2.47%	+1	9
Nursing & Midwifery	1648	1811	1856	1863	+215	+13.06%	+52	+2.89%	+7	2,083
Therapy Professions	316	405	411	404	+88	+27.72%	-2	-0.38%	-7	466
Health Science/ Diagnostics	7	9	10	10	+3	+50.69%	+1	+5.35%	+0	11
Social Care	11	21	25	25	+14	+124.56%	+5	+23.12%	-0	29
Social Workers	85	107	114	115	+30	+35.24%	+8	+7.36%	+1	124
Psychologists	60	64	72	72	+12	+20.10%	+8	+13.16%	-0	80
Pharmacy	2	3	3	3	+2	+129.33%	+1	+35.97%	-0	4
H&SC, Other	32	47	50	47	+14	+43.89%	+0	+0.26%	-3	63
Health & Social Care Professionals	513	655	686	676	+163	+31.81%	+21	+3.20%	-10	777
Management (VIII & above)	60	81	84	82	+22	+37.23%	+1	+1.63%	-2	84
Administrative/ Supervisory (V to VII)	135	243	282	283	+147	+108.70%	+40	+16.41%	+1	298
Clerical (III & IV)	456	554	560	564	+108	+23.81%	+10	+1.82%	+4	642
Management & Administrative	651	877	926	929	+278	+42.71%	+51	+5.84%	+3	1,024
Support	306	283	288	286	-20	-6.52%	+3	+1.04%	-2	353
Maintenance/ Technical	36	37	32	33	-3	-7.27%	-4	-9.62%	+1	34
General Support	342	320	320	319	-23	-6.60%	-1	-0.18%	-1	387
Health Care Assistants	1,423	1,592	1,618	1,616	+193	+13.55%	+23	+1.47%	-3	1,806
Care, other	131	170	185	182	+52	+39.66%	+13	+7.63%	-2	204
Home Help	556	764	799	814	+258	+46.30%	+50	+6.49%	+15	978
Patient & Client Care	2110	2526	2601	2612	+502	+23.80%	+86	+3.40%	+10	2,988



Community Services Employment Report by Grade Group: JUL 2023

CHO 2

JUL 2023	WTE DEC 2019	WTE DEC 2022	WTE JUN 2023	WTE JUL 2023	WTE change since DEC 2019	% WTE Change since Dec 2019	WTE change since DEC 2022	% WTE Change since Dec 2022	WTE change since JUN 2023	No. JUL 2023
Overall	4,256	4,596	4,652	4,593	+337	+7.91%	-3	-0.07%	-59	5,233
Consultants	40	41	45	44	+4	+11.20%	+3	+8.26%	-0	51
Registrars	73	90	84	105	+32	+43.30%	+15	+17.07%	+21	110
SHO/ Interns	36	42	43	28	-8	-21.59%	-14	-32.70%	-15	30
Medical/ Dental, other	59	57	59	59	-0	-0.14%	+1	+2.28%	-1	71
Medical & Dental	208	230	231	236	+28	+13.63%	+6	+2.74%	+5	262
Nurse/ Midwife Manager	241	266	273	272	+31	+12.70%	+6	+2.36%	-1	289
Nurse/ Midwife Specialist & AN/MP	88	137	156	154	+66	+75.47%	+17	+12.51%	-2	165
Staff Nurse/ Staff Midwife	778	789	784	780	+2	+0.31%	-9	-1.10%	-4	884
Public Health Nurse	192	187	184	179	-13	-6.83%	-9	-4.65%	-6	214
Nursing/ Midwifery Student	9	25	29	25	+16	+176.21%	-1	-3.88%	-5	48
Nursing/ Midwifery other	2	4	5	5	+3	+125.00%	+1	+12.50%	-0	5
Nursing & Midwifery	1310	1408	1432	1414	+104	+7.97%	+6	+0.39%	-19	1,605
Therapy Professions	304	387	403	390	+86	+28.39%	+3	+0.76%	-13	447
Health Science/ Diagnostics	6	10	11	11	+4	+65.59%	+1	+10.50%	+0	11
Social Care	50	48	47	49	-1	-1.55%	+1	+1.98%	+1	54
Social Workers	58	77	77	74	+16	+27.01%	-3	-3.73%	-3	83
Psychologists	59	74	79	79	+20	+32.97%	+5	+7.19%	-0	89
Pharmacy	5	6	6	6	+1	+26.93%	-0	-0.86%	-0	7
H&SC, Other	43	66	67	58	+15	+34.12%	-8	-11.83%	-9	75
Health & Social Care Professionals	525	667	690	666	+141	+26.84%	-0	-0.07%	-24	766
Management (VIII & above)	43	58	57	56	+14	+31.46%	-1	-1.89%	-0	58
Administrative/ Supervisory (V to VII)	99	184	197	194	+95	+96.20%	+9	+5.12%	-3	205
Clerical (III & IV)	431	410	440	438	+7	+1.59%	+28	+6.78%	-2	499
Management & Administrative	573	652	694	688	+115	+20.17%	+36	+5.55%	-6	762
Support	113	94	95	94	-19	-17.12%	-1	-0.69%	-1	123
Maintenance/ Technical	63	75	74	74	+11	+16.89%	-1	-1.41%	-1	75
General Support	176	169	169	167	-9	-4.96%	-2	-1.01%	-2	198
Health Care Assistants	821	846	843	835	+13	+1.62%	-11	-1.29%	-8	913
Care, other	144	218	206	205	+60	+41.86%	-13	-6.01%	-2	228
Home Help	499	407	387	382	-117	-23.52%	-25	-6.16%	-5	499
Patient & Client Care	1465	1470	1436	1421	-44	-2.99%	-49	-3.34%	-14	1,640



Community Services Employment Report by Grade Group: JUL 2023

CHO 3

JUL 2023	WTE DEC 2019	WTE DEC 2022	WTE JUN 2023	WTE JUL 2023	WTE change since DEC 2019	% WTE Change since Dec 2019	WTE change since DEC 2022	% WTE Change since Dec 2022	WTE change since JUN 2023	No. JUL 2023
Overall	2,655	3,200	3,311	3,299	+643	+24.22%	+98	+3.07%	-13	3,863
Consultants	26	33	33	33	+7	+26.49%	-0	-0.21%	+0	38
Registrars	42	47	58	61	+20	+47.43%	+15	+31.64%	+4	67
SHO/ Interns	25	35	16	16	-9	-35.07%	-19	-54.15%	+0	17
Medical/ Dental, other	57	51	52	51	-7	-11.38%	-1	-1.63%	-1	66
Medical & Dental	150	167	159	161	+11	+7.64%	-5	-3.18%	+3	188
Nurse/ Midwife Manager	170	181	180	180	+9	+5.47%	-1	-0.48%	-0	193
Nurse/ Midwife Specialist & AN/MP	43	65	74	75	+32	+74.51%	+10	+16.02%	+1	81
Staff Nurse/ Staff Midwife	540	585	589	591	+51	+9.38%	+6	+1.03%	+2	670
Public Health Nurse	127	126	122	121	-6	-4.79%	-5	-3.66%	-1	152
Nursing/ Midwifery Student	9	11	22	20	+11	+121.19%	+9	+75.85%	-2	37
Nursing/ Midwifery other		1	1	1	+1		+0	+1.01%	+0	1
Nursing & Midwifery	890	968	988	987	+98	+10.98%	+19	+2.01%	-1	1,134
Therapy Professions	186	251	281	276	+90	+48.56%	+24	+9.64%	-5	323
Health Science/ Diagnostics	5	9	9	9	+4	+69.41%	+0	+0.98%	+0	11
Social Care	5	4	2	2	-3	-58.93%	-2	-47.23%	+0	2
Social Workers	45	51	51	51	+6	+12.91%	-0	-0.08%	-0	56
Psychologists	111	114	115	114	+3	+2.54%	+0	+0.39%	-1	119
Pharmacy	5	6	7	6	+1	+26.04%	+1	+9.40%	-1	8
H&SC, Other	22	26	28	28	+6	+28.58%	+2	+8.02%	-1	32
Health & Social Care Professionals	378	460	493	486	+107	+28.30%	+26	+5.55%	-8	551
Management (VIII & above)	32	49	50	49	+17	+52.84%	+0	+0.92%	-1	50
Administrative/ Supervisory (V to VII)	105	174	181	182	+78	+74.04%	+9	+4.97%	+2	196
Clerical (III & IV)	282	315	355	355	+74	+26.10%	+41	+12.94%	+1	397
Management & Administrative	419	537	585	587	+168	+40.15%	+50	+9.27%	+2	643
Support	110	88	92	94	-16	-14.92%	+6	+6.27%	+2	118
Maintenance/ Technical	65	73	76	76	+11	+16.85%	+3	+4.41%	-1	76
General Support	175	161	168	169	-5	-3.13%	+9	+5.43%	+1	194
Health Care Assistants	381	446	448	439	+58	+15.27%	-7	-1.55%	-9	499
Care, other	87	120	131	130	+42	+48.52%	+9	+7.85%	-1	145
Home Help	176	342	340	340	+164	+93.09%	-2	-0.70%	-0	509
Patient & Client Care	644	908	918	908	+264	+41.05%	+0	+0.02%	-10	1,153



Community Services Employment Report by Grade Group: JUL 2023

CHO 4

JUL 2023	WTE DEC 2019	WTE DEC 2022	WTE JUN 2023	WTE JUL 2023	WTE change since DEC 2019	% WTE Change since Dec 2019	WTE change since DEC 2022	% WTE Change since Dec 2022	WTE change since JUN 2023	No. JUL 2023
Overall	5,939	6,531	6,399	6,391	+452	+7.61%	-140	-2.14%	-7	7,923
Consultants	55	66	65	66	+11	+20.85%	+1	+1.30%	+1	78
Registrars	98	93	103	121	+22	+22.76%	+28	+29.95%	+18	127
SHO/ Interns	32	42	47	44	+12	+36.94%	+1	+3.23%	-4	46
Medical/ Dental, other	98	120	116	113	+14	+14.67%	-7	-6.09%	-3	189
Medical & Dental	284	321	331	344	+60	+21.18%	+23	+7.08%	+12	440
Nurse/ Midwife Manager	358	405	407	414	+56	+15.65%	+9	+2.22%	+7	446
Nurse/ Midwife Specialist & AN/MP	68	93	118	122	+54	+79.16%	+30	+32.29%	+4	133
Staff Nurse/ Staff Midwife	1,161	1,261	1,198	1,191	+29	+2.53%	-70	-5.58%	-7	1,413
Public Health Nurse	216	216	209	205	-11	-4.99%	-11	-5.19%	-3	261
Nursing/ Midwifery Student	54	18	37	32	-21	-39.76%	+14	+76.65%	-5	57
Nursing & Midwifery	1857	1993	1969	1965	+107	+5.78%	-29	-1.44%	-4	2,310
Therapy Professions	359	459	476	470	+111	+31.00%	+11	+2.49%	-6	549
Health Science/ Diagnostics	10	12	10	10	+0	+3.23%	-2	-17.57%	-0	12
Social Care	39	44	42	43	+4	+10.68%	-1	-3.29%	+1	47
Social Workers	88	119	131	131	+43	+48.75%	+11	+9.61%	-0	148
Psychologists	107	123	126	120	+13	+12.12%	-3	-2.23%	-6	137
Pharmacy	8	9	12	12	+4	+55.42%	+4	+44.95%	+0	19
H&SC, Other	56	67	72	72	+15	+27.34%	+4	+6.36%	-0	99
Health & Social Care Professionals	667	833	869	858	+191	+28.70%	+25	+2.96%	-11	1,011
Management (VIII & above)	58	73	84	81	+23	+40.64%	+8	+10.41%	-3	83
Administrative/ Supervisory (V to VII)	123	204	230	232	+109	+88.16%	+29	+14.00%	+2	251
Clerical (III & IV)	415	479	503	512	+97	+23.30%	+33	+6.93%	+9	597
Management & Administrative	596	756	817	825	+229	+38.39%	+69	+9.17%	+8	931
Support	207	222	207	206	-1	-0.42%	-16	-7.27%	-1	238
Maintenance/ Technical	13	13	12	10	-3	-20.26%	-3	-20.20%	-2	13
General Support	220	235	219	216	-4	-1.60%	-19	-7.99%	-3	251
Health Care Assistants	1,079	1,166	1,093	1,101	+23	+2.11%	-64	-5.50%	+9	1,255
Care, other	113	151	153	150	+37	+32.42%	-1	-0.85%	-3	203
Home Help	1,124	1,076	947	932	-192	-17.06%	-144	-13.38%	-15	1,522
Patient & Client Care	2316	2393	2193	2184	-132	-5.71%	-209	-8.75%	-10	2,980



Community Services Employment Report by Grade Group: JUL 2023

CHO 5

JUL 2023	WTE DEC 2019	WTE DEC 2022	WTE JUN 2023	WTE JUL 2023	WTE change since DEC 2019	% WTE Change since Dec 2019	WTE change since DEC 2022	% WTE Change since Dec 2022	WTE change since JUN 2023	No. JUL 2023
Overall	4,153	4,571	4,749	4,779	+626	+15.08%	+208	+4.55%	+30	5,617
Consultants	29	35	34	33	+4	+13.49%	-2	-6.00%	-0	36
Registrars	29	41	52	62	+33	+115.21%	+21	+50.53%	+10	64
SHO/ Interns	37	32	27	26	-11	-29.19%	-6	-18.99%	-0	27
Medical/ Dental, other	65	75	75	73	+8	+12.62%	-2	-2.54%	-2	102
Medical & Dental	160	184	188	195	+35	+21.69%	+11	+5.85%	+7	229
Nurse/ Midwife Manager	299	327	324	326	+27	+9.19%	-1	-0.23%	+2	345
Nurse/ Midwife Specialist & AN/MP	53	112	138	142	+89	+167.86%	+30	+26.95%	+4	152
Staff Nurse/ Staff Midwife	862	878	896	908	+45	+5.25%	+29	+3.31%	+12	1,042
Public Health Nurse	176	165	163	162	-14	-7.84%	-2	-1.44%	-0	195
Nursing/ Midwifery Student	8	11	26	27	+20	+249.11%	+17	+156.51%	+1	48
Nursing/ Midwifery other	4	4	5	5	+1	+21.40%	+1	+22.50%	-0	6
Nursing & Midwifery	1402	1497	1552	1570	+168	+11.99%	+74	+4.93%	+18	1,788
Therapy Professions	323	368	399	398	+75	+23.15%	+30	+8.08%	-1	453
Health Science/ Diagnostics	4	7	12	11	+7	+184.47%	+3	+44.52%	-1	12
Social Care	26	30	34	34	+7	+28.36%	+4	+11.92%	-0	38
Social Workers	49	61	66	66	+16	+32.71%	+5	+7.66%	-0	73
Psychologists	74	75	81	81	+6	+8.72%	+6	+8.18%	-1	90
Pharmacy	1	3	3	3	+2	+187.00%	+0	+0.70%	-0	3
H&SC, Other	27	44	47	46	+19	+68.25%	+1	+3.21%	-2	50
Health & Social Care Professionals	505	588	642	637	+132	+26.20%	+49	+8.30%	-5	719
Management (VIII & above)	37	60	63	58	+21	+56.87%	-2	-3.17%	-4	59
Administrative/ Supervisory (V to VII)	108	190	212	211	+103	+95.15%	+20	+10.63%	-2	220
Clerical (III & IV)	283	351	375	387	+105	+36.98%	+37	+10.47%	+12	435
Management & Administrative	428	601	650	656	+228	+53.39%	+55	+9.16%	+7	714
Support	290	271	269	271	-20	-6.74%	-1	-0.30%	+2	338
Maintenance/ Technical	24	20	21	21	-3	-13.14%	+1	+5.31%	+0	23
General Support	315	291	290	292	-23	-7.24%	+0	+0.09%	+2	361
Health Care Assistants	600	633	671	674	+74	+12.39%	+41	+6.47%	+4	747
Care, other	78	128	128	129	+50	+64.35%	+1	+0.39%	+1	158
Home Help	665	648	629	626	-39	-5.91%	-22	-3.40%	-3	901
Patient & Client Care	1343	1409	1427	1429	+86	+6.37%	+19	+1.38%	+2	1,806



Community Services Employment Report by Grade Group: JUL 2023

CHO 6

JUL 2023	WTE DEC 2019	WTE DEC 2022	WTE JUN 2023	WTE JUL 2023	WTE change since DEC 2019	% WTE Change since Dec 2019	WTE change since DEC 2022	% WTE Change since Dec 2022	WTE change since JUN 2023	No. JUL 2023
Overall	1,605	1,772	1,824	1,826	+221	+13.78%	+54	+3.07%	+2	2,094
Consultants	23	27	27	27	+4	+18.17%	+0	+0.56%	-0	31
Registrars	30	41	39	44	+14	+46.91%	+3	+7.41%	+5	66
SHO/ Interns	4	3	4	5	+1	+31.25%	+2	+76.77%	+1	7
Medical/ Dental, other	49	48	46	45	-4	-7.92%	-2	-4.65%	-1	67
Medical & Dental	106	118	116	122	+16	+14.66%	+3	+2.75%	+6	171
Nurse/ Midwife Manager	138	138	139	140	+2	+1.66%	+1	+1.01%	+1	145
Nurse/ Midwife Specialist & AN/MP	15	20	34	33	+18	+116.95%	+14	+70.46%	-1	34
Staff Nurse/ Staff Midwife	286	303	312	306	+20	+7.14%	+3	+1.07%	-6	346
Public Health Nurse	117	99	95	100	-17	-14.74%	+1	+0.64%	+4	119
Nursing/ Midwifery Student	14	7	11	7	-7	-48.15%	-0	-4.24%	-4	12
Nursing/ Midwifery other	2	4	2	3	+1	+50.00%	-1	-20.21%	+1	3
Nursing & Midwifery	571	571	593	589	+18	+3.15%	+18	+3.15%	-4	659
Therapy Professions	158	173	185	185	+27	+17.24%	+12	+7.02%	+0	222
Health Science/ Diagnostics	17	15	14	14	-3	-15.20%	-1	-9.11%	+0	16
Social Care	11	11	13	14	+3	+27.40%	+3	+25.24%	+1	15
Social Workers	26	39	40	40	+14	+53.76%	+1	+3.73%	+0	44
Psychologists	38	39	42	40	+2	+5.31%	+1	+1.52%	-2	50
Pharmacy	2	7	6	5	+3	+173.33%	-2	-25.11%	-1	6
H&SC, Other	8	16	14	16	+7	+88.37%	+0	+1.08%	+2	18
Health & Social Care Professionals	260	300	315	314	+54	+20.91%	+14	+4.71%	-0	371
Management (VIII & above)	35	53	54	52	+18	+51.39%	-1	-1.43%	-1	54
Administrative/ Supervisory (V to VII)	91	145	150	142	+51	+56.69%	-3	-2.21%	-8	149
Clerical (III & IV)	134	162	164	165	+31	+22.96%	+3	+1.87%	+1	184
Management & Administrative	260	361	368	360	+100	+38.52%	-1	-0.26%	-8	387
Support	85	73	73	73	-12	-14.29%	-0	-0.23%	-0	86
Maintenance/ Technical	3	2	2	2	-1	-31.96%	+0	+0.00%	-0	2
General Support	88	75	75	75	-13	-14.87%	-0	-0.23%	-0	88
Health Care Assistants	267	279	288	287	+20	+7.51%	+8	+2.85%	-2	324
Care, other	54	68	70	81	+26	+48.27%	+12	+17.91%	+11	94
Patient & Client Care	321	347	358	367	+46	+14.42%	+20	+5.82%	+9	418



Community Services Employment Report by Grade Group: JUL 2023

CHO 7

JUL 2023	WTE DEC 2019	WTE DEC 2022	WTE JUN 2023	WTE JUL 2023	WTE change since DEC 2019	% WTE Change since Dec 2019	WTE change since DEC 2022	% WTE Change since Dec 2022	WTE change since JUN 2023	No. JUL 2023
Overall	3,151	3,411	3,465	3,464	+313	+9.93%	+53	+1.55%	-1	4,020
Consultants	54	57	60	60	+6	+11.41%	+3	+4.76%	-0	64
Registrars	87	94	91	88	+1	+0.85%	-6	-6.45%	-3	125
SHO/ Interns	24	33	26	36	+12	+49.01%	+2	+6.60%	+10	52
Medical/ Dental, other	78	61	61	63	-15	-19.39%	+2	+2.54%	+2	92
Medical & Dental	242	245	237	246	+3	+1.40%	+0	+0.18%	+8	333
Nurse/ Midwife Manager	231	256	275	274	+43	+18.38%	+18	+7.05%	-1	291
Nurse/ Midwife Specialist & AN/MP	61	90	100	100	+39	+65.00%	+10	+10.87%	+1	105
Staff Nurse/ Staff Midwife	520	537	537	516	-4	-0.75%	-21	-3.99%	-22	582
Public Health Nurse	175	164	162	170	-5	-2.98%	+6	+3.65%	+8	207
Nursing/ Midwifery Student	32	27	24	21	-11	-33.35%	-5	-19.91%	-3	37
Nursing/ Midwifery other	8	6	8	8	+0	+0.40%	+2	+27.66%	-0	9
Nursing & Midwifery	1027	1080	1106	1089	+62	+6.05%	+9	+0.81%	-17	1,231
Therapy Professions	325	348	340	335	+10	+3.17%	-13	-3.66%	-5	385
Health Science/ Diagnostics		8	8	8	+8		+1	+9.71%	+0	9
Social Care	11	11	10	10	-1	-10.07%	-1	-7.27%	-0	11
Social Workers	67	76	79	80	+13	+19.28%	+4	+4.89%	+1	88
Psychologists	62	75	80	79	+17	+28.17%	+4	+4.88%	-1	88
Pharmacy	25	27	27	27	+1	+5.63%	+0	+0.34%	-0	30
H&SC, Other	43	44	41	43	-0	-0.63%	-1	-2.65%	+1	50
Health & Social Care Professionals	533	588	586	582	+49	+9.18%	-6	-1.09%	-4	661
Management (VIII & above)	40	67	65	62	+22	+55.67%	-5	-7.59%	-2	63
Administrative/ Supervisory (V to VII)	96	175	181	186	+90	+94.02%	+11	+6.39%	+5	194
Clerical (III & IV)	241	300	313	316	+75	+31.12%	+17	+5.56%	+3	355
Management & Administrative	377	542	559	565	+188	+49.71%	+23	+4.19%	+6	612
Support	171	154	154	154	-17	-9.84%	-0	-0.29%	+0	173
Maintenance/ Technical	6	5	5	5	-0	-4.10%	+0	+1.70%	+0	6
General Support	176	159	159	159	-17	-9.66%	-0	-0.22%	+0	179
Health Care Assistants	441	403	414	414	-27	-6.22%	+11	+2.70%	-1	468
Care, other	227	262	269	274	+47	+20.65%	+12	+4.59%	+6	298
Home Help	127	131	135	135	+8	+6.54%	+5	+3.67%	+0	238
Patient & Client Care	796	796	818	824	+28	+3.49%	+28	+3.48%	+5	1,004



Community Services Employment Report by Grade Group: JUL 2023

CHO 8

JUL 2023	WTE DEC 2019	WTE DEC 2022	WTE JUN 2023	WTE JUL 2023	WTE change since DEC 2019	% WTE Change since Dec 2019	WTE change since DEC 2022	% WTE Change since Dec 2022	WTE change since JUN 2023	No. JUL 2023
Overall	4,583	4,753	4,936	4,934	+351	+7.66%	+181	+3.81%	-1	5,788
Consultants	42	42	43	43	+1	+2.20%	+1	+2.18%	-0	46
Registrars	105	121	119	136	+31	+29.82%	+15	+12.17%	+17	140
SHO/ Interns	38	29	34	32	-6	-14.79%	+3	+11.89%	-1	33
Medical/ Dental, other	72	65	61	59	-13	-18.35%	-6	-9.06%	-1	78
Medical & Dental	258	258	257	271	+13	+5.16%	+13	+5.14%	+14	297
Nurse/ Midwife Manager	285	295	290	290	+5	+1.75%	-5	-1.68%	+0	310
Nurse/ Midwife Specialist & AN/MP	95	128	139	140	+45	+48.07%	+12	+9.70%	+1	154
Staff Nurse/ Staff Midwife	790	800	804	800	+10	+1.25%	+0	+0.03%	-4	904
Public Health Nurse	199	220	208	207	+8	+4.08%	-13	-5.97%	-1	249
Nursing/ Midwifery Student	4	9	25	25	+20	+456.92%	+16	+181.29%	-0	49
Nursing/ Midwifery other	4	5	5	5	+1	+20.55%	-0	-2.43%	+0	5
Nursing & Midwifery	1377	1457	1471	1467	+90	+6.51%	+10	+0.72%	-4	1,671
Therapy Professions	363	368	390	389	+25	+6.94%	+21	+5.59%	-2	471
Health Science/ Diagnostics	7	13	12	12	+5	+67.22%	-1	-8.82%	-0	13
Social Care	12	12	15	13	+1	+7.93%	+1	+12.43%	-2	16
Social Workers	76	96	95	94	+19	+24.97%	-1	-1.44%	-1	107
Psychologists	114	106	105	103	-11	-9.54%	-3	-2.64%	-2	113
Pharmacy	7	11	12	12	+4	+59.97%	+0	+3.47%	-0	15
H&SC, Other	46	52	52	52	+6	+13.90%	+0	+0.15%	+1	59
Health & Social Care Professionals	626	658	681	675	+50	+7.96%	+17	+2.60%	-6	794
Management (VIII & above)	57	74	78	73	+16	+27.68%	-1	-1.03%	-4	76
Administrative/ Supervisory (V to VII)	148	213	222	226	+78	+52.61%	+13	+6.31%	+4	238
Clerical (III & IV)	461	474	548	553	+93	+20.14%	+79	+16.66%	+5	644
Management & Administrative	666	762	848	853	+187	+28.02%	+92	+12.04%	+5	958
Support	87	77	80	81	-5	-6.21%	+4	+5.27%	+2	102
Maintenance/ Technical	56	50	55	55	-1	-1.58%	+4	+8.78%	+0	57
General Support	142	128	135	136	-6	-4.39%	+9	+6.66%	+2	159
Health Care Assistants	949	886	893	892	-57	-6.02%	+6	+0.70%	-1	1,021
Care, other	146	190	197	191	+45	+30.86%	+1	+0.37%	-6	225
Home Help	418	415	453	448	+30	+7.13%	+33	+8.02%	-5	663
Patient & Client Care	1514	1491	1544	1531	+18	+1.18%	+40	+2.69%	-13	1,909



Community Services Employment Report by Grade Group: JUL 2023

CHO 9

JUL 2023	WTE DEC 2019	WTE DEC 2022	WTE JUN 2023	WTE JUL 2023	WTE change since DEC 2019	% WTE Change since Dec 2019	WTE change since DEC 2022	% WTE Change since Dec 2022	WTE change since JUN 2023	No. JUL 2023
Overall	3,407	3,905	3,964	3,952	+544	+15.97%	+47	+1.20%	-12	4,458
Consultants	56	59	61	59	+3	+5.29%	-0	-0.39%	-2	63
Registrars	90	123	116	113	+23	+25.66%	-10	-7.86%	-3	147
SHO/ Interns	60	47	51	51	-9	-15.24%	+4	+9.02%	+0	71
Medical/ Dental, other	51	50	50	49	-2	-3.75%	-1	-2.50%	-2	64
Medical & Dental	257	279	278	272	+15	+5.85%	-7	-2.48%	-6	345
Nurse/ Midwife Manager	248	287	297	304	+57	+22.89%	+17	+6.02%	+7	325
Nurse/ Midwife Specialist & AN/MP	75	134	144	146	+71	+95.64%	+12	+8.93%	+3	157
Staff Nurse/ Staff Midwife	693	726	748	730	+36	+5.24%	+3	+0.43%	-18	803
Public Health Nurse	176	172	163	173	-3	-1.71%	+1	+0.29%	+9	210
Nursing/ Midwifery Student	40	34	25	25	-15	-37.76%	-9	-25.57%	+0	44
Nursing/ Midwifery other	13	12	12	12	-1	-8.07%	-0	-2.07%	+0	13
Nursing & Midwifery	1244	1365	1389	1389	+145	+11.68%	+24	+1.76%	+1	1,552
Therapy Professions	300	363	360	359	+59	+19.77%	-3	-0.96%	-1	416
Health Science/ Diagnostics	21	13	14	14	-7	-32.27%	+1	+9.03%	+0	14
Social Care	7	11	10	10	+3	+36.39%	-1	-12.94%	+0	11
Social Workers	78	103	103	102	+24	+30.76%	-1	-0.89%	-1	112
Psychologists	124	138	141	138	+14	+11.51%	+0	+0.23%	-3	151
Pharmacy	18	20	20	20	+2	+10.36%	+1	+3.42%	-0	28
H&SC, Other	57	54	59	58	+1	+2.63%	+4	+7.57%	-1	65
Health & Social Care Professionals	605	701	708	702	+97	+16.03%	+0	+0.05%	-7	797
Management (VIII & above)	44	58	62	61	+17	+39.25%	+4	+6.11%	-1	63
Administrative/ Supervisory (V to VII)	112	241	247	252	+139	+124.41%	+10	+4.23%	+4	264
Clerical (III & IV)	303	374	393	395	+92	+30.22%	+21	+5.73%	+2	444
Management & Administrative	459	673	703	708	+248	+54.07%	+35	+5.22%	+5	771
Support	198	182	179	175	-23	-11.78%	-7	-3.80%	-5	199
Maintenance/ Technical	9	10	10	10	+1	+9.25%	-0	-1.17%	-0	11
General Support	207	192	190	185	-22	-10.83%	-7	-3.66%	-5	210
Health Care Assistants	510	527	524	525	+15	+2.91%	-2	-0.35%	+1	587
Care, other	125	168	173	171	+46	+37.10%	+3	+1.90%	-2	196
Patient & Client Care	635	694	697	696	+61	+9.63%	+1	+0.19%	-1	783



Community Services Employment Report by Grade Group: JUL 2023

other Community Services

JUL 2023	WTE DEC 2019	WTE DEC 2022	WTE JUN 2023	WTE JUL 2023	WTE change since DEC 2019	% WTE Change since Dec 2019	WTE change since DEC 2022	% WTE Change since Dec 2022	WTE change since JUN 2023	No. JUL 2023
Overall	640	740	779	791	+151	+23.60%	+52	+7.01%	+13	861
Consultants	17	17	18	18	+1	+8.12%	+1	+7.28%	-0	20
Registrars	25	30	27	27	+2	+8.84%	-3	-8.75%	+0	51
SHO/ Interns	2	5	4	3	+1	+77.42%	-2	-45.00%	-1	5
Medical/ Dental, other	0				-0	-100.00%				
Medical & Dental	44	52	50	48	+4	+10.11%	-4	-7.06%	-2	76
Nurse/ Midwife Manager	66	88	89	89	+23	+34.91%	+1	+1.43%	+0	92
Nurse/ Midwife Specialist & AN/MP	8	11	11	10	+2	+27.15%	-1	-4.64%	-0	12
Staff Nurse/ Staff Midwife	174	156	155	159	-15	-8.60%	+3	+1.77%	+3	164
Nursing/ Midwifery Student			1						-1	
Nursing/ Midwifery other	1	2	2	2	+1	+100.00%	+0	+1.52%	+0	2
Nursing & Midwifery	249	257	258	261	+11	+4.57%	+4	+1.38%	+3	270
Therapy Professions	11	10	10	9	-2	-14.18%	-0	-2.98%	-1	10
Health Science/ Diagnostics	9	8	6	6	-3	-34.41%	-2	-26.68%	+0	6
Social Care	4	3	3	3	-1	-21.75%	-0	-0.36%	-0	3
Social Workers	29	15	18	18	-11	-37.60%	+3	+18.53%	+0	20
Psychologists	7	6	5	5	-2	-28.57%	-1	-21.63%	+0	5
Pharmacy	3	12	14	14	+11	+411.72%	+2	+13.58%	-0	16
H&SC, Other	3	2	5	5	+2	+64.95%	+2	+92.77%	+0	5
Health & Social Care Professionals	65	57	61	60	-5	-7.69%	+3	+5.38%	-1	65
Management (VIII & above)	65	73	81	83	+18	+27.53%	+10	+14.15%	+3	85
Administrative/ Supervisory (V to VII)	78	114	123	120	+42	+54.53%	+7	+5.79%	-3	128
Clerical (III & IV)	70	75	84	90	+20	+28.25%	+16	+21.04%	+6	98
Management & Administrative	214	261	288	294	+80	+37.61%	+33	+12.48%	+6	311
Support	14	25	22	22	+8	+53.98%	-3	-13.05%	-0	23
Maintenance/ Technical	3	9	7	8	+5	+174.00%	-1	-8.36%	+1	9
General Support	17	34	29	30	+13	+74.77%	-4	-11.83%	+1	32
Health Care Assistants	37	65	69	75	+38	+103.97%	+10	+16.07%	+6	81
Care, other	15	14	24	24	+9	+56.61%	+10	+70.28%	-0	26
Patient & Client Care	52	79	93	99	+47	+89.97%	+20	+25.83%	+6	107



Community Services Employment Report : JUL 2023

Employment Report by S38 Agencies

JUL 2023	WTE DEC 2019	WTE DEC 2022	WTE JUN 2023	WTE JUL 2023	WTE change since DEC 2019	% WTE Change since Dec 2019	WTE change since DEC 2022	% WTE Change since Dec 2022	WTE change since JUN 2023	No. JUL 2023
Overall	52,085	57,523	58,541	58,502	+6,417	+12.32%	+979	+1.70%	-39	68,772
Health Service Executive	5468	6398	6591	6606	+1,137	+20.80%	+208	+3.25%	+14	7,523
CHO 1	5468	6398	6591	6606	+1,137	+20.80%	+208	+3.25%	+14	7,523
Health Service Executive	4256	4596	4652	4593	+337	+7.91%	-3	-0.07%	-59	5,233
Bros. of Charity Galway	939				-939	-100.00%				
Bros. of Charity West Region		1,376	1,432	1,467	+1,467		+91	+6.60%	+35	1,812
Bros. of Charity Roscommon	349				-349	-100.00%				
Section 38 Voluntary Agencies	1288	1376	1432	1467	+178	+13.84%	+91	+6.60%	+35	1,812
CHO 2	5545	5972	6084	6060	+515	+9.29%	+88	+1.47%	-24	7,045
Health Service Executive	2655	3200	3311	3299	+643	+24.22%	+98	+3.07%	-13	3,863
Bros. of Charity Limerick	520	600	596	598	+79	+15.12%	-2	-0.29%	+2	688
Bros. of Charity Clare	348	424	452	450	+102	+29.15%	+25	+5.98%	-2	565
Avista Limerick	543	547	549	546	+3	+0.51%	-0	-0.06%	-3	625
Avista Roscrea	290	298	299	300	+11	+3.63%	+2	+0.80%	+2	389
Section 38 Voluntary Agencies	1701	1869	1896	1895	+193	+11.37%	+26	+1.37%	-1	2,267
CHO 3	4357	5069	5207	5193	+837	+19.20%	+124	+2.45%	-14	6,130
Health Service Executive	5939	6531	6399	6391	+452	+7.61%	-140	-2.14%	-7	7,923
Cork Dental Hospital	103	117	120	113	+10	+9.71%	-4	-3.71%	-7	188
St. John of God Kerry	315	321	327	324	+9	+2.82%	+3	+0.81%	-3	399
Bros. of Charity Southern	740	827	851	851	+110	+14.92%	+24	+2.88%	+0	1,054
Cope Foundation	1,091	1,163	1,197	1,168	+78	+7.12%	+5	+0.42%	-29	1,352
Section 38 Voluntary Agencies	2249	2429	2495	2456	+207	+9.20%	+27	+1.11%	-38	2,993
CHO 4	8189	8961	8893	8848	+659	+8.05%	-113	-1.26%	-46	10,916
Health Service Executive	4153	4571	4749	4779	+626	+15.08%	+208	+4.55%	+30	5,617
Bros. of Charity Waterford	630	742	772	773	+143	+22.69%	+31	+4.21%	+1	910
Aurora	279	268	271	275	-4	-1.42%	+7	+2.75%	+4	295
Carriglea Cairde Services	214	224	219	214	+0	+0.00%	-10	-4.38%	-5	260
Section 38 Voluntary Agencies	1123	1234	1262	1263	+139	+12.37%	+29	+2.33%	+1	1,465
CHO 5	5277	5805	6011	6042	+765	+14.50%	+237	+4.08%	+31	7,082
Health Service Executive	1605	1772	1824	1826	+221	+13.78%	+54	+3.07%	+2	2,094
Dublin Dental Hospital	91	92	94	92	+1	+0.55%	+0	+0.00%	-2	168
St. John of God (IDS)	456	425	420	411	-45	-9.95%	-14	-3.38%	-9	496
St. John of God (MHS)	235	246	254	253	+18	+7.67%	+8	+3.12%	-0	320
Our Lady's Hospice & Care, Wicklow		45	45	42	+42		-3	-6.66%	-2	51
Royal Hospital Donnybrook, Dublin	272	270	273	274	+3	+0.92%	+4	+1.55%	+1	287
Leopardstown Park Hospital	211	187	188	191	-20	-9.44%	+4	+1.87%	+3	211
Children's Sunshine Home	58	53	52	52	-6	-10.68%	-1	-1.55%	+0	59
Sunbeam House Services	449	480	488	491	+42	+9.40%	+11	+2.34%	+3	553
St John of God HQ		50	48	46	+46		-3	-6.86%	-2	50
Section 38 Voluntary Agencies	1773	1848	1860	1853	+80	+4.53%	+5	+0.27%	-7	2,195
CHO 6	3378	3620	3684	3680	+301	+8.92%	+59	+1.64%	-5	4,289
Health Service Executive	3151	3411	3465	3464	+313	+9.93%	+53	+1.55%	-1	4,020
Stewart's Hospital (Palmerstown)	852	1,057	1,081	1,089	+238	+27.92%	+32	+3.02%	+8	1,263
Cheeverstown House	396	427	434	445	+49	+12.41%	+18	+4.19%	+11	513
Our Lady's Hospice & Care, Dublin	482	526	509	502	+20	+4.14%	-24	-4.52%	-7	589
Peamount Hospital (Newcastle)	486	549	576	578	+92	+18.91%	+29	+5.24%	+2	680
St. John of God Liffey Services	787	795	792	797	+10	+1.23%	+2	+0.25%	+5	915



JUL 2023	WTE DEC 2019	WTE DEC 2022	WTE JUN 2023	WTE JUL 2023	WTE change since DEC 2019	% WTE Change since Dec 2019	WTE change since DEC 2022	% WTE Change since Dec 2022	WTE change since JUN 2023	No. JUL 2023
Overall	52,085	57,523	58,541	58,502	+6,417	+12.32%	+979	+1.70%	-39	68,772
Kare, Newbridge Co Kildare	360	448	451	450	+91	+25.19%	+2	+0.44%	-1	556
Section 38 Voluntary Agencies	3363	3803	3844	3862	+499	+14.84%	+59	+1.55%	+18	4,516
CHO 7	6514	7215	7309	7326	+812	+12.46%	+112	+1.55%	+18	8,536
Health Service Executive	4583	4753	4936	4934	+351	+7.66%	+181	+3.81%	-1	5,788
St. John of God Drumcar	647	655	676	658	+12	+1.82%	+3	+0.48%	-17	758
Muiriosa Foundation Longford/Westmeath	270	359	360	365	+95	+35.24%	+6	+1.71%	+5	470
Muiriosa Foundation South Kildare	334	352	358	370	+36	+10.85%	+18	+5.00%	+11	472
Muiriosa Foundation Laois/Offaly	302	394	410	412	+110	+36.52%	+17	+4.44%	+2	531
Section 38 Voluntary Agencies	1552	1761	1804	1805	+253	+16.32%	+44	+2.52%	+1	2,231
CHO 8	6135	6514	6740	6739	+604	+9.85%	+226	+3.46%	-0	8,019
Health Service Executive	3407	3905	3964	3952	+544	+15.97%	+47	+1.20%	-12	4,458
St. Michael's House Dublin	1,431	1,449	1,464	1,459	+28	+1.98%	+9	+0.65%	-5	1,788
Avista Dublin	1,034	1,078	1,062	1,067	+32	+3.13%	-11	-1.01%	+5	1,257
St. Vincent's Fairview	206	185	136	135	-71	-34.59%	-50	-27.20%	-2	165
Incorporated Orthopaedic Hospital	226	273	294	284	+59	+26.03%	+11	+3.96%	-9	331
Central Remedial Clinic	278	340	324	321	+43	+15.35%	-19	-5.45%	-3	372
Section 38 Voluntary Agencies	3175	3325	3280	3266	+91	+2.86%	-59	-1.79%	-14	3,913
CHO 9	6582	7230	7243	7217	+635	+9.65%	-13	-0.17%	-26	8,371
Health Service Executive	640	740	779	791	+151	+23.60%	+52	+7.01%	+13	861
other Community Services	640	740	779	791	+151	+23.60%	+52	+7.01%	+13	861

Community Services Employment Report by Grade Group: JUL 2023

JUL 2023	WTE DEC 2019	WTE DEC 2022	WTE JUN 2023	WTE JUL 2023	WTE change since DEC 2019	% WTE Change since Dec 2019	WTE change since DEC 2022	% WTE Change since Dec 2022	WTE change since JUN 2023	No. JUL 2023
Overall	52,085	57,523	58,542	58,502	+6,417	+12.32%	+979	+1.70%	-39	68,772
Consultant Anaesthesia			0	0	+0		+0		-0	1
Consultant Dentistry	11	13	15	15	+4	+34.53%	+2	+14.24%	+0	18
Consultant Medicine	22	31	33	31	+9	+39.04%	-0	-1.08%	-2	41
Consultant Paediatrics	5	4	4	4	-0	-10.77%	+0	+0.00%	+0	5
Consultant Pathology				1	+1		+1		+1	1
Consultant Psychiatry	381	420	431	429	+49	+12.78%	+9	+2.24%	-2	473
Consultant Radiology	1	1	1	1	+0	+0.00%	+0	+0.00%	+0	1
Consultant Surgery	4	3	3	3	-1	-34.81%	-0	-0.38%	-0	4
Consultants	424	472	486	484	+60	+14.14%	+12	+2.44%	-2	544
Registrar	566	652	675	745	+179	+31.71%	+93	+14.19%	+70	875
Senior Registrar	103	133	124	129	+26	+24.89%	-4	-3.37%	+5	168
Specialist Registrar	19	13	14	12	-7	-37.24%	-1	-10.21%	-2	17
Registrars	687	798	814	885	+198	+28.83%	+87	+10.87%	+72	1,060
Interns	8	5	5	9	+1	+15.50%	+4	+87.80%	+4	12
Senior House Officer	311	322	304	295	-17	-5.35%	-28	-8.54%	-10	363
SHO/ Interns	319	327	309	304	-15	-4.82%	-23	-7.10%	-6	375
Dentists	301	307	308	297	-4	-1.35%	-10	-3.13%	-11	408
Other Medical	333	322	301	299	-35	-10.38%	-23	-7.29%	-3	483
Medical/ Dental, other	634	629	609	596	-39	-6.09%	-33	-5.26%	-14	891
Medical & Dental	2065	2227	2218	2269	+204	+9.88%	+42	+1.89%	+50	2,870
Clinical Nurse/ Midwife Manager	2,495	2,668	2,698	2,707	+212	+8.51%	+39	+1.48%	+10	2,907
Director Nursing/Midwifery, Assistant	460	556	584	585	+125	+27.22%	+30	+5.31%	+1	621
Director of Nursing/Midwifery	207	225	223	223	+16	+7.68%	-2	-1.06%	-0	228
Nurse/ Midwife Manager	3,162	3,449	3,505	3,516	+353	+11.18%	+67	+1.93%	+11	3,756
Advanced Nurse/ Midwife Practitioner	45	157	190	193	+148	+329.03%	+36	+22.72%	+3	200
Clinical Nurse/ Midwife Specialist	646	907	1,025	1,034	+388	+60.02%	+127	+14.03%	+9	1,129
Nurse/ Midwife Specialist & AN/MP	691	1,064	1,215	1,227	+536	+77.53%	+163	+15.32%	+13	1,329
Staff Midwives	8	5	6	6	-2	-23.77%	+1	+13.58%	+0	8
Staff Nurse [Intellectual Disability]	1,602	1,779	1,628	1,718	+117	+7.29%	-60	-3.39%	+90	1,995
Staff Nurse [Psychiatric]	2,984	2,915	2,875	2,810	-174	-5.84%	-105	-3.59%	-65	3,057
Staff Nurses [General/ Children's]	4,414	4,667	4,791	4,698	+284	+6.43%	+30	+0.65%	-93	5,493
Staff Nurse/ Staff Midwife	9,008	9,366	9,300	9,233	+224	+2.49%	-134	-1.43%	-68	10,553
Public Health Nurse	1,534	1,502	1,453	1,463	-71	-4.60%	-39	-2.59%	+10	1,776
Public Health Nurse	1,534	1,502	1,453	1,463	-71	-4.60%	-39	-2.59%	+10	1,776
Nursing/ Midwifery awaiting registration	72	43	10	10	-61	-85.44%	-33	-75.97%	+0	11
Post-registration Nurse/ Midwife Student	98	97	51	29	-69	-70.48%	-68	-70.18%	-22	29
Pre-registration Nurse/ Midwife Intern	53	33	241	243	+190	+356.85%	+210	+627.03%	+3	479
Nursing/ Midwifery Student	223	174	302	283	+60	+26.92%	+109	+62.78%	-19	519
Nursing Education/Clinical	58	69	66	66	+8	+13.94%	-3	-4.78%	+0	73
Other Nursing/ Midwifery	1	1			-1	-100.00%	-1	-100.00%		
Nursing/ Midwifery other	59	70	66	66	+7	+11.99%	-4	-6.14%	+0	73
Nursing & Midwifery	14677	15625	15841	15787	+1,110	+7.56%	+162	+1.03%	-54	18,006
Dietitians	163	269	293	293	+129	+79.05%	+24	+8.83%	-1	346



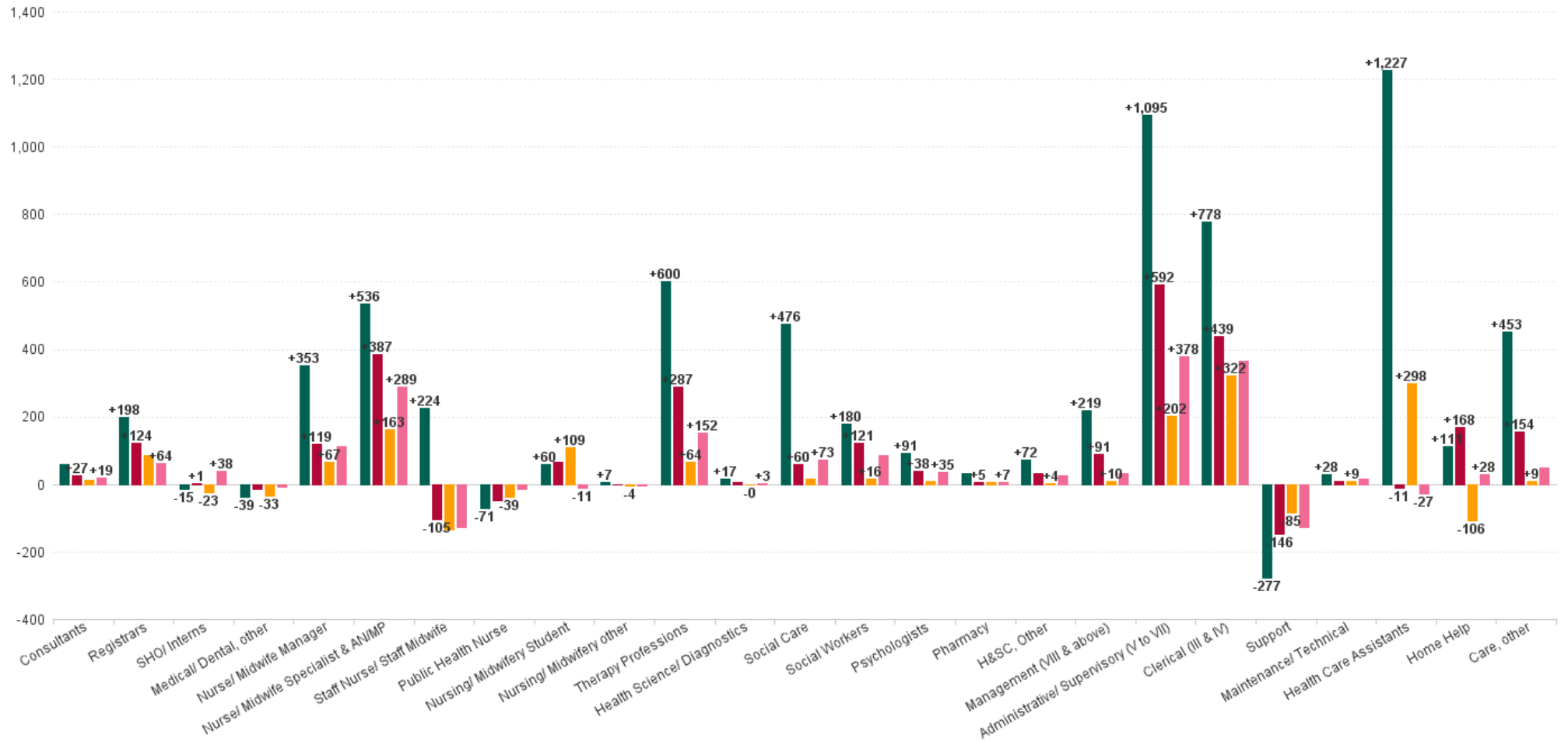
JUL 2023	WTE DEC 2019	WTE DEC 2022	WTE JUN 2023	WTE JUL 2023	WTE change since DEC 2019	% WTE Change since Dec 2019	WTE change since DEC 2022	% WTE Change since Dec 2022	WTE change since JUN 2023	No. JUL 2023
Overall	52,085	57,523	58,542	58,502	+6,417	+12.32%	+979	+1.70%	-39	68,772
Occupational Therapists	1,229	1,415	1,439	1,422	+193	+15.69%	+6	+0.45%	-17	1,627
Orthoptists	13	20	18	19	+6	+46.49%	-1	-2.76%	+1	23
Physiotherapists	857	1,003	1,049	1,039	+182	+21.24%	+36	+3.63%	-9	1,228
Podiatrists & Chiropodists	37	87	96	95	+57	+153.75%	+8	+9.65%	-2	109
Speech & Language Therapists	903	946	952	936	+32	+3.57%	-10	-1.08%	-16	1,090
Therapy Professions	3,204	3,740	3,847	3,804	+600	+18.72%	+64	+1.72%	-43	4,423
Audiology	44	57	62	61	+17	+39.39%	+4	+7.12%	-1	66
Biochemists	8	8	6	6	-2	-25.82%	-2	-26.68%	+0	6
Cardiac Physiologists		1	1	1	+1		+0	+0.00%	+0	1
Clinical Engineering	21	24	25	25	+4	+17.95%	+1	+3.60%	-0	25
Medical Science	20	18	16	16	-4	-18.23%	-2	-13.10%	+0	18
Phlebotomists	1	0	0	0	-1	-81.15%	-0	-23.33%	-0	1
Physicists	2	2	2	2	-0	-19.00%	+0	+0.00%	-0	2
Radiographers	11	13	13	13	+2	+13.37%	+0	+1.82%	+0	17
Respiratory Physiologists	1	2	1	1	+0	+0.00%	-1	-50.00%	+0	1
Vascular Physiologists	0	0	0	0	-0	-19.05%	+0	+0.00%	+0	1
Health Science/ Diagnostics	108	125	125	125	+17	+15.41%	-0	-0.31%	-1	138
Other Health & Social Care			66	68	+68		+68		+2	72
Social Care	2,707	3,167	3,104	3,115	+408	+15.07%	-53	-1.66%	+11	3,658
Social Care	2,707	3,167	3,170	3,183	+476	+17.60%	+16	+0.50%	+13	3,730
Social Workers	807	970	1,000	987	+180	+22.30%	+16	+1.69%	-13	1,110
Social Workers	807	970	1,000	987	+180	+22.30%	+16	+1.69%	-13	1,110
Psychologists	901	983	1,013	993	+91	+10.14%	+10	+1.00%	-20	1,107
Psychologists	901	983	1,013	993	+91	+10.14%	+10	+1.00%	-20	1,107
Pharmacists	84	104	111	107	+23	+27.90%	+4	+3.40%	-4	137
Pharmacy Technicians	14	22	25	24	+10	+66.46%	+2	+10.69%	-1	28
Pharmacy	98	125	136	131	+33	+33.56%	+6	+4.67%	-5	165
Counsellor Therapists	228	271	280	279	+50	+21.91%	+7	+2.64%	-2	310
Dental Hygienists	58	61	60	59	+2	+2.60%	-2	-3.04%	-0	75
Environmental Health Officers			1	1	+1		+1		+0	1
Other Health & Social Care	96	82	94	96	-0	-0.41%	+13	+16.07%	+2	113
Play Therapists/ Specialists	20	21	22	22	+2	+8.01%	+1	+4.10%	-0	28
Vaccinators		35	31	19	+19		-17	-47.04%	-12	59
H&SC, Other	403	471	487	475	+72	+17.98%	+4	+0.83%	-12	586
Health & Social Care Professionals	8228	9582	9779	9697	+1,470	+17.86%	+116	+1.21%	-82	11,259
Executive Management	124	159	147	144	+19	+15.63%	-15	-9.40%	-3	146
Senior Management (VIII & GM)	494	668	712	693	+200	+40.43%	+25	+3.75%	-18	715
Management (VIII & above)	618	827	859	837	+219	+35.44%	+10	+1.23%	-22	861
Middle Management (V-VII)	1,488	2,385	2,567	2,579	+1,091	+73.33%	+193	+8.11%	+11	2,737
Other Administrative	20	15	24	24	+4	+20.58%	+9	+61.74%	-0	24
Administrative/ Supervisory (V to VII)	1,507	2,400	2,591	2,602	+1,095	+72.65%	+202	+8.43%	+11	2,761
General Administrative (III & IV)	3,694	4,150	4,424	4,472	+778	+21.05%	+322	+7.76%	+48	5,145
Clerical (III & IV)	3,694	4,150	4,424	4,472	+778	+21.05%	+322	+7.76%	+48	5,145
Management & Administrative	5819	7377	7874	7911	+2,092	+35.94%	+535	+7.25%	+37	8,767
Catering	409	384	390	393	-16	-3.80%	+9	+2.31%	+3	442
Household Services	1,438	1,364	1,341	1,322	-117	-8.10%	-42	-3.10%	-19	1,655
Other Labs & Associated	4	2	7	7	+3	+66.67%	+4	+183.06%	-0	7

JUL 2023	WTE DEC 2019	WTE DEC 2022	WTE JUN 2023	WTE JUL 2023	WTE change since DEC 2019	% WTE Change since Dec 2019	WTE change since DEC 2022	% WTE Change since Dec 2022	WTE change since JUN 2023	No. JUL 2023
Overall	52,085	57,523	58,542	58,502	+6,417	+12.32%	+979	+1.70%	-39	68,772
Other Support	378	318	305	261	-117	-31.05%	-57	-18.04%	-44	412
Portering	231	200	198	201	-30	-13.11%	+2	+0.77%	+3	221
Support	2,461	2,269	2,241	2,184	-277	-11.26%	-85	-3.74%	-58	2,737
Maintenance	397	400	408	407	+11	+2.65%	+7	+1.78%	-1	435
Technical Services	9	25	25	27	+17	+191.77%	+2	+6.75%	+2	27
Maintenance/ Technical	406	425	433	434	+28	+6.89%	+9	+2.07%	+1	462
General Support	2867	2694	2674	2618	-249	-8.69%	-76	-2.82%	-56	3,199
Attendant/ Aide	3,199	2,297	2,225	2,221	-978	-30.57%	-76	-3.31%	-4	2,597
Health Care Assistant/ Care Assistant	8,838	10,578	10,761	10,862	+2,024	+22.90%	+285	+2.69%	+101	12,688
Health & Social Care Assistants	110	201	286	291	+181	+164.06%	+90	+44.67%	+5	319
Health Care Assistants	12,147	13,075	13,271	13,374	+1,227	+10.10%	+298	+2.28%	+102	15,604
Health Promotion		22	19	18	+18		-4	-19.31%	-1	25
Home Care Services	132	186	194	191	+59	+44.82%	+5	+2.66%	-4	215
Other Care Grades	931	1,259	1,269	1,262	+331	+35.53%	+3	+0.24%	-7	1,486
Pastoral Care	58	40	40	40	-18	-31.63%	+0	+0.48%	-0	77
Workshop Services	1,596	1,654	1,671	1,660	+64	+3.99%	+5	+0.32%	-12	1,954
Care, other	2,717	3,162	3,194	3,171	+453	+16.68%	+9	+0.29%	-24	3,757
Home Helps	3,565	3,782	3,690	3,676	+111	+3.11%	-106	-2.80%	-14	5,310
Home Help	3,565	3,782	3,690	3,676	+111	+3.11%	-106	-2.80%	-14	5,310
Patient & Client Care	18430	20019	20156	20221	+1,791	+9.72%	+202	+1.01%	+65	24,671



WTE Change by Staff Category

■ WTE change since DEC 2019 ■ WTE change since DEC 2021 ■ WTE change since DEC 2022 ■ WTE change since JUL 2022



Community Services Employment Report by WTE, Headcount, Gender, Full-Time / Part-Time etc. JUL 2023

JUL 2023	WTE JUL 2023	No. JUL 2023	WTE : No	% Male	% Female	Male WTE : No.	Female WTE : No	Perm Count %	Perm Count Male %	Perm Count Female %	Fulltime Count %	Part time Count %	FT Count Male %	FT Count Female %
Total	58,502	68,772	1:0.9	18.35%	81.65%	1:0.9	1:0.8	85.79%	15.12%	70.67%	64.56%	35.44%	79.57%	61.18%
Consultants	483.75	544	1:0.9	39.15%	60.85%	1:0.9	1:0.9	70.77%	28.13%	42.65%	83.27%	16.73%	90.14%	78.85%
Registrars	885.19	1,060	1:0.8	40.66%	59.34%	1:0.9	1:0.8	2.45%	1.13%	1.32%	96.98%	3.02%	99.07%	95.55%
SHO/ Interns	303.89	375	1:0.8	39.20%	60.80%	1:0.8	1:0.8	1.33%	0.80%	0.53%	99.20%	0.80%	100.00%	98.68%
Medical/ Dental, other	595.74	891	1:0.7	32.66%	67.34%	1:0.6	1:0.7	77.67%	22.33%	55.33%	39.62%	60.38%	39.18%	39.83%
Medical & Dental	2,269	2,870	1:0.8	37.70%	62.30%	1:0.8	1:0.8	38.61%	12.79%	25.82%	76.86%	23.14%	81.33%	74.16%
Nurse/ Midwife Manager	3,515.55	3,756	1:0.9	18.66%	81.34%	1:1	1:0.9	96.59%	18.13%	78.46%	87.43%	12.57%	96.86%	85.27%
Nurse/ Midwife Specialist & AN/MP	1,227.14	1,329	1:0.9	12.34%	87.66%	1:1	1:0.9	98.04%	12.26%	85.78%	85.55%	14.45%	97.56%	83.86%
Staff Nurse/ Staff Midwife	9,232.5	10,553	1:0.9	13.83%	86.17%	1:0.9	1:0.9	90.33%	12.36%	77.97%	70.91%	29.09%	88.97%	68.01%
Public Health Nurse	1,463.35	1,776	1:0.8	0.45%	99.55%	1:0.9	1:0.8	95.89%	0.45%	95.44%	69.14%	30.86%	100.00%	69.00%
Nursing/ Midwifery Student	282.7	519	1:0.5	14.45%	85.55%	1:0.5	1:0.5	10.79%	0.39%	10.40%	89.98%	10.02%	94.67%	89.19%
Nursing/ Midwifery other	65.57	73	1:0.9	8.22%	91.78%	1:1	1:0.9	100.00%	8.22%	91.78%	79.45%	20.55%	100.00%	77.61%
Nursing & Midwifery	15,787	18,006	1:0.9	13.41%	86.59%	1:0.9	1:0.9	90.50%	12.02%	78.48%	75.85%	24.15%	92.09%	73.33%
Therapy Professions	3,803.92	4,423	1:0.9	9.34%	90.66%	1:0.9	1:0.9	94.46%	8.59%	85.87%	74.23%	25.77%	89.35%	72.67%
Health Science/ Diagnostics	124.65	138	1:0.9	32.61%	67.39%	1:1	1:0.9	89.86%	29.71%	60.14%	83.33%	16.67%	91.11%	79.57%
Social Care	3,183.19	3,730	1:0.9	16.97%	83.03%	1:0.9	1:0.8	92.33%	15.60%	76.73%	50.03%	49.97%	64.14%	47.14%
H&SC, Other	95.64	113	1:0.8	110.62%	407.96%	1:0.9	1:0.8	444.25%	100.00%	344.25%	326.55%	192.04%	84.00%	57.27%
Social Workers	986.67	1,110	1:0.9	16.94%	83.06%	1:1	1:0.9	93.06%	15.32%	77.75%	80.99%	19.01%	92.55%	78.63%
Psychologists	992.78	1,107	1:0.9	18.52%	81.48%	1:1	1:0.9	79.22%	15.27%	63.96%	79.13%	20.87%	94.63%	75.61%
Pharmacy	131.24	165	1:0.8	18.18%	81.82%	1:0.8	1:0.8	76.36%	11.52%	64.85%	59.39%	40.61%	53.33%	60.74%
H&SC, Other	379.22	473	1:0.8	26.43%	97.46%	1:0.9	1:0.8	106.13%	23.89%	82.24%	78.01%	45.88%	84.00%	57.27%
Health & Social Care Professionals	9,697	11,259	1:0.9	14.56%	85.44%	1:0.9	1:0.8	91.34%	13.09%	78.25%	66.67%	33.33%	79.62%	64.46%
Management (VIII & above)	837.31	861	1:1	28.69%	71.31%	1:1	1:1	95.01%	26.71%	68.29%	97.10%	2.90%	98.38%	96.58%
Administrative/ Supervisory (V to VII)	2,602.14	2,761	1:0.9	18.65%	81.35%	1:1	1:0.9	94.60%	17.17%	77.44%	89.21%	10.79%	97.28%	87.36%
Clerical (III & IV)	4,471.73	5,145	1:0.9	10.46%	89.54%	1:0.9	1:0.9	85.85%	8.34%	77.51%	70.46%	29.54%	87.92%	68.42%
Management & Administrative	7,911	8,767	1:0.9	14.83%	85.17%	1:1	1:0.9	89.51%	12.92%	76.58%	78.98%	21.02%	93.62%	76.43%
Support	2,183.73	2,737	1:0.8	32.66%	67.34%	1:0.9	1:0.8	85.60%	27.62%	57.98%	53.82%	46.18%	76.17%	42.97%
Maintenance/ Technical	433.93	462	1:0.9	95.45%	4.55%	1:0.9	1:0.8	94.16%	89.61%	4.55%	88.74%	11.26%	90.93%	42.86%
General Support	2,618	3,199	1:0.8	41.73%	58.27%	1:0.9	1:0.8	86.84%	36.57%	50.27%	58.86%	41.14%	81.05%	42.97%
Health Care Assistants	13,373.64	15,604	1:0.9	23.40%	76.60%	1:0.9	1:0.8	85.95%	20.27%	65.68%	57.02%	42.98%	71.05%	52.74%
Home Help	3,676.23	5,310	1:0.7	5.78%	94.22%	1:0.8	1:0.7	73.33%	3.16%	70.17%	16.23%	83.77%	23.13%	15.81%



JUL 2023	WTE JUL 2023	No. JUL 2023	WTE : No	% Male	% Female	Male WTE : No.	Female WTE : No	Perm Count %	Perm Count Male %	Perm Count Female %	Fulltime Count %	Part time Count %	FT Count Male %	FT Count Female %
Total	58,502	68,772	1:0.9	18.35%	81.65%	1:0.9	1:0.8	85.79%	15.12%	70.67%	64.56%	35.44%	79.57%	61.18%
Care, other	3,170.7	3,757	1:0.8	23.74%	76.26%	1:0.9	1:0.8	89.97%	20.18%	69.79%	65.48%	34.52%	75.11%	62.48%
Patient & Client Care	20,221	24,671	1:0.8	19.66%	80.34%	1:0.9	1:0.8	83.85%	16.57%	67.27%	49.53%	50.47%	68.76%	44.83%



Community Services Employment Report by CHO : WTE, Headcount, Gender, Full-Time / Part-Time etc. JUL 2023

JUL 2023	WTE JUL 2023	No. JUL 2023	WTE : No	% Male	% Female	Male WTE : No.	Female WTE : No	Perm Count %	Number Male %	Number Female %	Fulltime Count %	Part time Count %	FT Count Male %	FT Count Female %
Total	58,502	68,772	1:0.9	18.35%	81.65%	1:0.9	1:0.8	85.79%	15.12%	70.67%	64.56%	35.44%	79.57%	61.18%
CHO 1	6,606	7,523	1:0.9	17.08%	82.92%	1:0.9	1:0.9	85.38%	14.49%	70.89%	64.97%	35.03%	83.11%	61.24%
CHO 2	6,060	7,045	1:0.9	19.79%	80.21%	1:0.9	1:0.8	87.44%	16.30%	71.14%	64.06%	35.94%	75.68%	61.19%
CHO 3	5,193	6,130	1:0.8	14.47%	85.53%	1:0.9	1:0.8	87.11%	12.20%	74.91%	59.85%	40.15%	74.07%	57.45%
CHO 4	8,848	10,916	1:0.8	16.68%	83.32%	1:0.9	1:0.8	72.51%	10.95%	61.56%	58.00%	42.00%	75.62%	54.47%
CHO 5	6,042	7,082	1:0.9	17.07%	82.93%	1:0.9	1:0.8	90.82%	14.59%	76.24%	60.96%	39.04%	77.42%	57.57%
CHO 6	3,680	4,289	1:0.9	22.52%	77.48%	1:0.9	1:0.8	89.44%	19.58%	69.85%	74.47%	25.53%	87.78%	70.60%
CHO 7	7,326	8,536	1:0.9	20.58%	79.42%	1:0.9	1:0.8	87.39%	17.49%	69.90%	71.80%	28.20%	84.29%	68.56%
CHO 8	6,739	8,019	1:0.8	17.81%	82.19%	1:0.9	1:0.8	90.77%	15.31%	75.46%	60.67%	39.33%	71.22%	58.38%
CHO 9	7,217	8,371	1:0.9	18.19%	81.81%	1:0.9	1:0.8	88.51%	15.94%	72.57%	67.98%	32.02%	83.65%	64.50%
other Community Services	791	861	1:0.9	40.65%	59.35%	1:0.9	1:0.9	86.41%	33.45%	52.96%	92.80%	7.20%	94.00%	91.98%



Previous Month Summary

	% WTE change since JUN 2023	WTE change since JUN 2023	CHO 1	CHO 2	CHO 3	CHO 4	CHO 5	CHO 6	CHO 7	CHO 8	CHO 9	other Community Services
Total	-0.07%	-39.4	+14.3	-24.2	-14.1	-45.9	+30.7	-4.9	+17.7	-0.2	-25.7	+12.9
Consultants	-0.47%	-2.3	-1.8	-0.3	+0.0	+1.3	-0.3	+0.4	-0.3	-0.1	-0.9	-0.3
Registrars	+8.80%	+71.6	+9.7	+19.6	+3.5	+17.8	+10.1	+1.1	-3.9	+17.0	-3.2	+0.0
SHO/ Interns	-1.79%	-5.5	-3.0	-13.6	+0.4	-3.5	-0.5	+4.8	+11.0	-1.2	+1.4	-1.3
Medical/ Dental, other	-2.22%	-13.5	-0.1	-0.6	-1.0	-8.2	-2.1	-0.5	+2.0	-1.5	-1.7	
Medical & Dental	+2.27%	+50.3	+4.8	+5.2	+2.9	+7.4	+7.2	+5.8	+8.8	+14.3	-4.4	-1.6
Nurse/ Midwife Manager	+0.30%	+10.6	+0.2	-1.4	+1.2	+7.2	+2.4	-1.1	-2.0	-2.4	+6.2	+0.3
Nurse/ Midwife Specialist & AN/MP	+1.04%	+12.6	+2.4	-2.6	+1.2	+4.3	+3.6	-1.4	+2.0	+0.7	+2.6	-0.1
Staff Nurse/ Staff Midwife	-0.73%	-67.8	+7.5	-7.4	-3.5	-10.5	+6.5	-9.3	-21.5	-6.5	-26.6	+3.4
Public Health Nurse	+0.69%	+10.0	-0.8	-5.9	-0.9	-3.4	-0.2	+4.4	+8.4	-0.7	+9.0	
Nursing/ Midwifery Student	-6.37%	-19.2	-3.1	-5.0	-2.2	-5.0	+0.9	-3.8	-2.9	+2.9	+0.0	-1.0
Nursing/ Midwifery other	+0.11%	+0.1	+0.9	-0.3	+0.0	+0.0	-0.0	+1.0	-1.7	+0.2	+0.1	+0.0
Nursing & Midwifery	-0.34%	-53.8	+7.0	-22.6	-4.1	-7.5	+13.1	-10.3	-17.7	-5.8	-8.7	+2.6
Therapy Professions	-1.11%	-42.6	-7.2	-13.6	-5.7	-7.1	-1.3	-2.4	-6.5	-1.7	+3.3	-0.6
Health Science/ Diagnostics	-0.57%	-0.7	+0.0	+0.0	+0.1	-0.1	-0.8	+0.3	+0.0	-0.2	+0.0	+0.0
Social Care	+0.41%	+12.9	-0.2	+8.1	+4.4	+0.8	+1.9	+1.3	+4.1	-2.5	-5.0	-0.1
Social Workers	-1.34%	-13.4	+0.9	-2.8	-1.4	-2.2	-1.1	-0.3	-1.1	-0.8	-4.9	+0.2
Psychologists	-2.01%	-20.4	-0.1	-0.9	-1.6	-5.4	-0.5	-3.1	-1.2	-1.9	-5.6	+0.0
Pharmacy	-3.62%	-4.9	-0.0	-0.3	-0.7	+0.0	-0.0	-1.1	-0.9	-0.2	-1.2	-0.5
H&SC, Other	-2.54%	-12.4	-3.5	-9.5	-0.6	-0.1	-1.8	+2.8	+1.3	+0.8	-1.9	+0.0
Health & Social Care Professionals	-0.83%	-81.6	-10.0	-19.0	-5.5	-14.2	-3.7	-2.5	-4.2	-6.4	-15.2	-1.0
Management (VIII & above)	-2.54%	-21.8	-2.5	+0.4	-1.1	-4.7	-3.0	-1.5	-4.3	-4.1	-3.6	+2.6
Administrative/ Supervisory (V to VII)	+0.44%	+11.3	+0.9	-2.8	+1.9	+6.0	-2.5	-8.7	+4.7	+4.4	+10.7	-3.2
Clerical (III & IV)	+1.08%	+47.7	+4.2	+1.4	+3.4	+9.2	+13.1	-0.1	+4.2	+7.0	-0.9	+6.2
Management & Administrative	+0.47%	+37.2	+2.5	-0.9	+4.2	+10.5	+7.5	-10.3	+4.6	+7.2	+6.2	+5.6
Support	-2.57%	-57.6	-1.7	-4.7	+1.9	-41.7	+1.0	+1.3	+3.7	+1.0	-18.2	-0.1



Maintenance/ Technical	+0.27%	+1.2	+1.1	+0.1	-0.7	-1.8	-0.1	+0.2	+1.3	+0.0	-0.2	+1.2
General Support	-2.11%	-56.4	-0.6	-4.5	+1.2	-43.5	+0.9	+1.5	+5.0	+1.0	-18.5	+1.1
Health Care Assistants	+0.77%	+102.4	-2.5	+21.8	-9.2	+35.1	+13.9	-1.6	+16.8	+0.1	+21.4	+6.5
Home Help	-0.37%	-13.8	+15.1	-4.7	-0.4	-15.2	-3.5		+0.2	-5.3		
Care, other	-0.74%	-23.7	-2.0	+0.5	-3.4	-18.5	-4.7	+12.5	+4.2	-5.3	-6.5	-0.3
Patient & Client Care	+0.32%	+65.0	+10.5	+17.6	-12.9	+1.5	+5.7	+10.9	+21.1	-10.5	+14.9	+6.2



Year on Year Summary

	% WTE change since JUL 2022	WTE change since JUL 2022	CHO 1	CHO 2	CHO 3	CHO 4	CHO 5	CHO 6	CHO 7	CHO 8	CHO 9	other Communi ty Services
Total	+2.55%	+1,454.6	+293.7	+223.3	+104.4	-87.8	+226.6	+75.1	+215.6	+260.5	+74.1	+69.1
Consultants	+4.16%	+19.3	+0.8	+2.3	+2.6	+6.9	-1.9	+8.9	+2.3	-4.4	+1.0	+0.8
Registrars	+7.74%	+63.6	+7.3	-6.0	+9.2	+22.2	+8.1	+8.2	+2.6	-3.5	+16.7	-1.3
SHO/ Interns	+14.36%	+38.2	+0.1	-2.3	-4.7	+8.3	-6.2	+3.2	+7.3	+11.7	+21.0	-0.2
Medical/ Dental, other	-1.09%	-6.6	+0.8	+2.0	-0.9	-1.6	-0.3	+2.0	+1.0	-7.3	-2.1	
Medical & Dental	+5.32%	+114.5	+9.1	-4.1	+6.2	+35.7	-0.2	+22.3	+13.2	-3.5	+36.5	-0.7
Nurse/ Midwife Manager	+3.32%	+113.0	+14.7	+15.6	+5.7	+2.7	+3.7	+6.9	+26.2	+3.3	+27.3	+6.9
Nurse/ Midwife Specialist & AN/MP	+30.84%	+289.2	+47.5	+28.2	+26.7	+36.1	+52.1	+23.7	+29.1	+22.6	+22.1	+1.2
Staff Nurse/ Staff Midwife	-1.36%	-127.0	+15.3	-26.8	-13.0	-40.7	+7.2	-13.7	-20.3	+23.7	-54.5	-4.2
Public Health Nurse	-0.86%	-12.7	-2.9	+3.8	+1.6	-6.3	+0.7	-1.3	+4.8	-6.1	-7.0	
Nursing/ Midwifery Student	-3.69%	-10.8	-4.1	-2.5	+4.2	-9.6	+1.7	+0.4	+0.3	+3.2	-4.5	
Nursing/ Midwifery other	-6.89%	-4.9	-0.2	+1.5	+0.0	+0.0	+1.0	-1.8	-2.1	-1.2	-2.2	+0.0
Nursing & Midwifery	+1.59%	+246.8	+70.2	+19.7	+25.3	-17.7	+66.5	+14.1	+38.0	+45.6	-18.7	+3.8
Therapy Professions	+4.16%	+151.8	+14.8	+35.4	+26.1	+26.9	+29.5	+1.2	-4.2	+20.3	+2.1	-0.2
Health Science/ Diagnostics	+2.53%	+3.1	+0.1	+1.2	+0.6	-1.3	+4.4	-3.3	+2.1	+0.2	+1.0	-2.0
Social Care	+2.33%	+72.6	+9.8	+18.5	+4.1	+2.1	+19.7	-11.1	+23.6	+6.4	-0.5	-0.1
Social Workers	+9.40%	+84.7	+14.8	+9.8	+5.1	+18.6	+9.0	+12.2	+7.9	+7.2	+11.0	-10.8
Psychologists	+3.67%	+35.1	+3.8	+8.6	+2.1	+8.0	+4.3	+0.0	+12.8	-1.6	+0.1	-3.0
Pharmacy	+5.74%	+7.1	-0.1	+0.7	+0.2	+2.2	-0.5	+0.6	-0.8	+0.2	-0.7	+5.3
H&SC, Other	+5.38%	+24.3	+4.7	-3.9	+5.8	+3.8	+3.3	+4.3	+1.3	+1.6	+1.6	+1.8
Health & Social Care Professionals	+4.06%	+378.7	+47.9	+70.3	+44.0	+60.3	+69.7	+3.9	+42.7	+34.2	+14.6	-8.9
Management (VIII & above)	+3.95%	+31.9	+3.9	+0.7	+5.4	+12.8	+2.1	+0.4	-8.4	+7.4	-3.9	+11.5
Administrative/ Supervisory (V to VII)	+17.00%	+378.2	+60.7	+42.4	-0.5	+54.5	+46.7	+24.0	+42.6	+17.3	+75.2	+15.2
Clerical (III & IV)	+8.89%	+365.2	+14.0	+45.4	+35.8	+33.8	+74.3	-0.7	+35.7	+93.9	+8.0	+25.1



Management & Administrative	+10.86%	+775.2	+78.7	+88.4	+40.8	+101.0	+123.0	+23.7	+69.9	+118.6	+79.3	+51.8
Support	-5.44%	-125.5	-5.2	-3.1	-0.2	-56.9	-3.8	-2.1	-17.2	-4.8	-33.1	+0.9
Maintenance/ Technical	+3.49%	+14.6	-3.3	+3.6	+6.0	-2.6	+0.9	+2.2	+1.8	+6.6	+1.0	-1.8
General Support	-4.06%	-110.9	-8.5	+0.5	+5.8	-59.4	-2.9	+0.2	-15.3	+1.9	-32.1	-0.9
Health Care Assistants	-0.20%	-27.2	-10.0	+48.5	-41.1	-121.7	-1.6	+2.7	+59.4	+12.1	+10.8	+13.7
Home Help	+0.76%	+27.8	+97.3	-2.9	+5.7	-90.7	-22.4		+5.6	+35.2		
Care, other	+1.59%	+49.7	+9.0	+2.8	+17.7	+4.7	-5.5	+8.2	+2.1	+16.5	-16.2	+10.3
Patient & Client Care	+0.25%	+50.3	+96.3	+48.4	-17.7	-207.7	-29.4	+10.9	+67.1	+63.8	-5.4	+24.0



Year to Date Summary

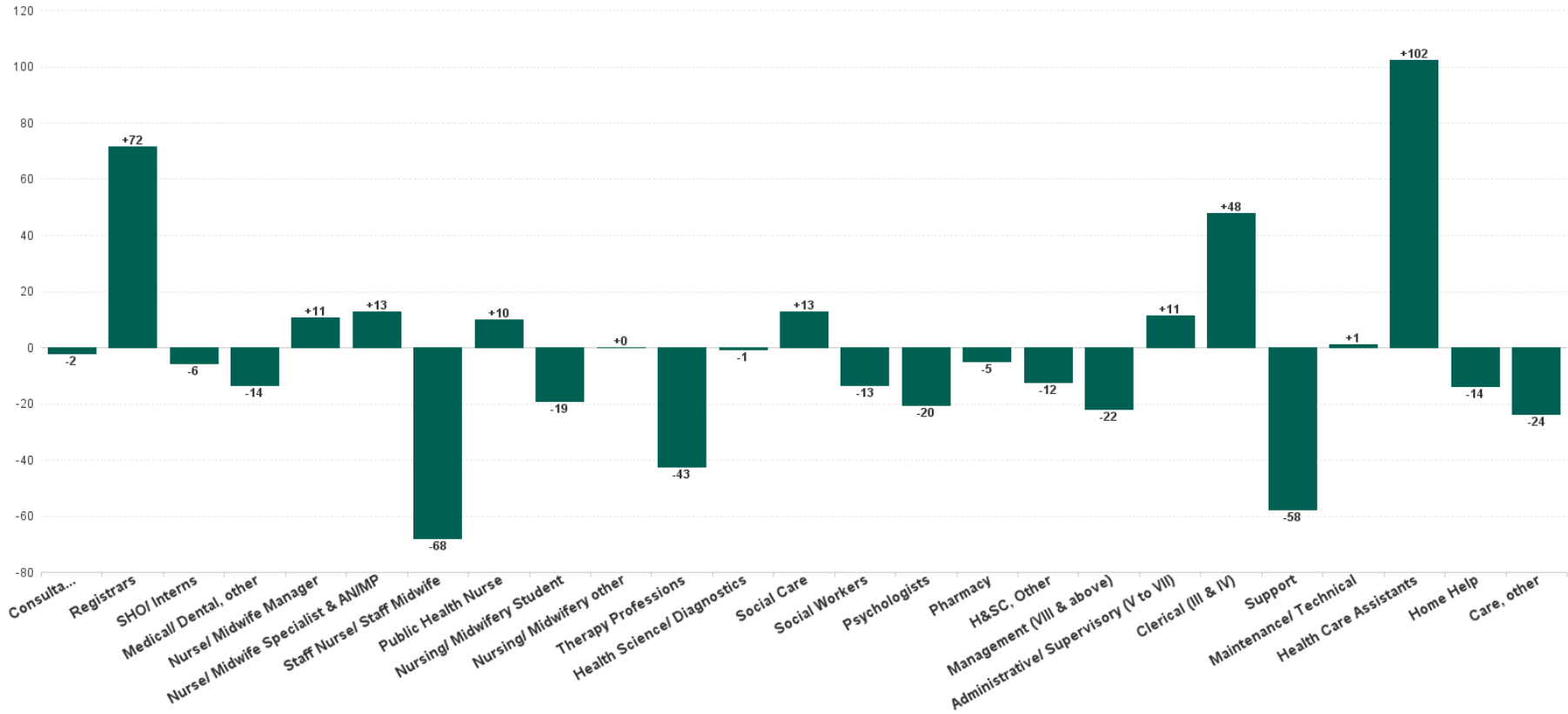
	% WTE change since DEC 2022	WTE change since DEC 2022	CHO 1	CHO 2	CHO 3	CHO 4	CHO 5	CHO 6	CHO 7	CHO 8	CHO 9	other Communi ty Services
Total	+1.70%	+979.4	+207.8	+87.7	+124.0	-113.0	+236.9	+59.4	+111.7	+225.6	-12.5	+51.9
Consultants	+2.44%	+11.5	+0.9	+3.4	-0.1	+0.9	-2.0	+3.3	+2.8	+0.9	+0.3	+1.2
Registrars	+10.87%	+86.8	+9.9	+15.3	+14.7	+27.4	+21.0	-1.0	-4.6	+14.8	-8.1	-2.6
SHO/ Interns	-7.10%	-23.2	-1.0	-13.7	-19.1	+0.4	-6.1	+3.7	+4.3	+3.4	+7.2	-2.3
Medical/ Dental, other	-5.26%	-33.1	-11.9	+1.3	-0.8	-11.5	-1.9	-1.2	+0.4	-5.9	-1.5	
Medical & Dental	+1.89%	+42.0	-2.2	+6.3	-5.3	+17.1	+10.9	+4.7	+2.9	+13.3	-2.1	-3.6
Nurse/ Midwife Manager	+1.93%	+66.6	+17.8	+5.7	-0.6	+8.9	+2.4	+3.0	+16.4	-7.8	+19.6	+1.3
Nurse/ Midwife Specialist & AN/MP	+15.32%	+163.0	+22.5	+15.9	+12.4	+29.9	+30.1	+17.5	+13.0	+11.4	+11.0	-0.5
Staff Nurse/ Staff Midwife	-1.43%	-133.7	+4.3	-15.9	+4.2	-66.8	+13.7	-0.7	-17.3	-1.7	-56.4	+2.8
Public Health Nurse	-2.59%	-38.9	-5.9	-8.7	-4.6	-11.2	-2.4	+0.6	+6.0	-13.2	+0.5	
Nursing/ Midwifery Student	+62.78%	+109.0	+13.8	-1.0	+14.0	+24.1	+21.7	-0.3	+1.7	+33.7	+1.4	
Nursing/ Midwifery other	-6.14%	-4.3	-0.2	+0.5	+0.0	+0.0	+1.0	-0.8	-1.8	+0.7	-3.8	+0.0
Nursing & Midwifery	+1.03%	+161.7	+52.3	-3.5	+25.4	-15.2	+66.5	+19.2	+18.0	+23.2	-27.7	+3.6
Therapy Professions	+1.72%	+64.2	-1.5	+5.5	+24.8	+9.0	+29.7	+3.9	-14.6	+19.8	-12.0	-0.3
Health Science/ Diagnostics	-0.31%	-0.4	+0.5	+1.0	+0.1	-2.2	+3.3	-1.4	-0.7	-1.2	+2.2	-2.1
Social Care	+0.50%	+15.8	+4.7	+14.7	-1.2	-1.2	+6.2	-5.1	-0.1	+8.6	-10.8	-0.0
Social Workers	+1.69%	+16.4	+7.9	-2.4	-1.4	+8.0	+2.2	+1.9	+1.3	-1.5	-2.3	+2.8
Psychologists	+1.00%	+9.8	+8.4	+5.1	-2.0	-3.6	+6.1	-1.5	+4.2	-2.7	-2.8	-1.4
Pharmacy	+4.67%	+5.9	+0.9	-0.1	+0.5	+3.9	+0.0	-1.8	+0.1	+0.4	+0.2	+1.7
H&SC, Other	+0.83%	+3.9	+0.1	-8.3	+1.7	+4.3	-0.2	+2.3	+0.8	-2.0	+2.8	+2.3
Health & Social Care Professionals	+1.21%	+115.5	+21.0	+15.5	+22.5	+18.2	+47.3	-1.7	-8.9	+21.3	-22.8	+3.0
Management (VIII & above)	+1.23%	+10.2	+1.3	+0.7	+3.4	+8.6	-1.4	-7.7	-6.7	-0.5	+2.1	+10.3
Administrative/ Supervisory (V to VII)	+8.43%	+202.4	+39.9	+18.0	+6.8	+33.2	+27.4	+2.6	+14.6	+15.4	+38.1	+6.6
Clerical (III & IV)	+7.76%	+322.0	+10.1	+36.6	+45.9	+33.1	+39.4	+11.4	+20.3	+85.4	+24.0	+15.7



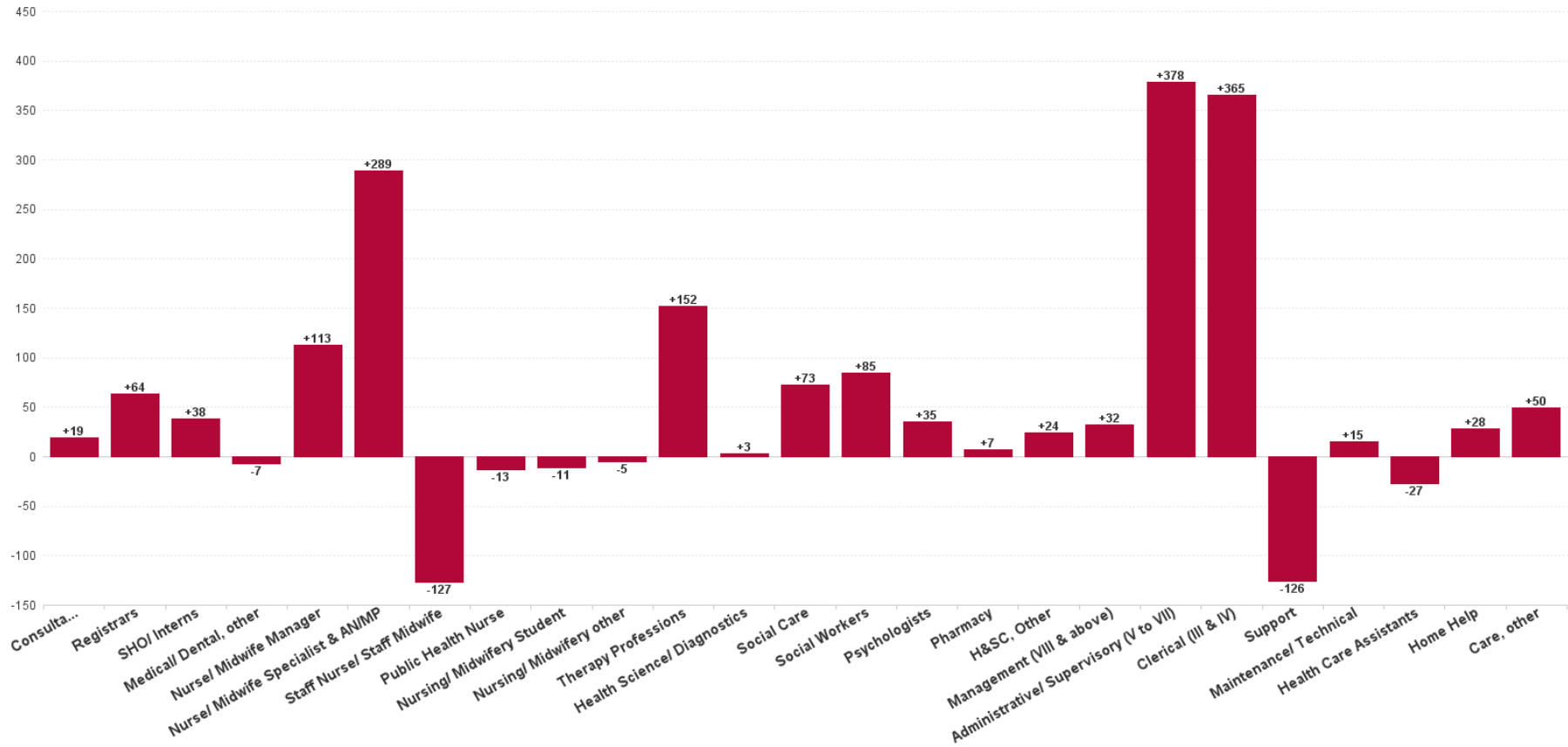
Management & Administrative	+7.25%	+534.6	+51.3	+55.3	+56.1	+74.9	+65.4	+6.4	+28.2	+100.2	+64.2	+32.6
Support	-3.74%	-84.9	+3.0	-2.8	+3.5	-54.5	-2.4	+0.9	-7.2	+2.0	-23.9	-3.3
Maintenance/ Technical	+2.07%	+8.8	-3.5	-0.5	+3.2	-1.6	+0.6	+2.8	+2.1	+7.4	-0.9	-0.8
General Support	-2.82%	-76.1	-0.6	-3.2	+6.7	-56.2	-1.9	+3.7	-5.2	+9.4	-24.8	-4.1
Health Care Assistants	+2.28%	+298.4	+23.5	+49.8	+14.4	-8.4	+81.6	+19.9	+64.9	+25.8	+16.6	+10.4
Home Help	-2.80%	-105.8	+49.6	-25.1	-2.4	-143.9	-22.0		+4.8	+33.3		
Care, other	+0.29%	+9.1	+12.9	-7.5	+6.7	+0.5	-11.0	+7.1	+7.1	-0.8	-15.9	+10.0
Patient & Client Care	+1.01%	+201.7	+86.0	+17.3	+18.7	-151.9	+48.7	+27.0	+76.7	+58.3	+0.6	+20.4



Previous Month Summary Chart: Change since JUN 2023



Previous Year Summary Chart: Change since JUL 2022



YTD Summary Chart: Change since DEC 2022

