

## CHO 2 Employment Report: JUL 2023

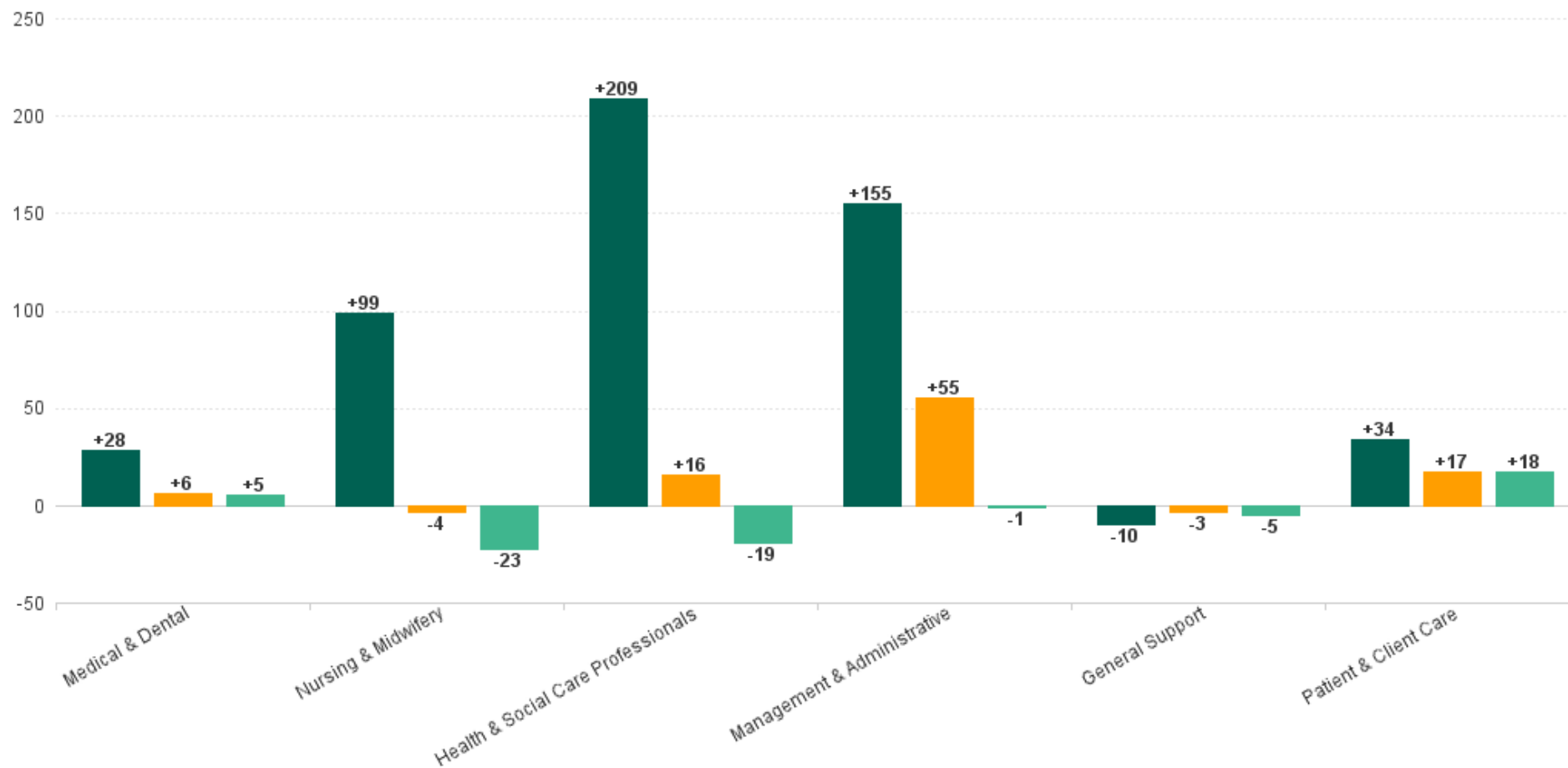
### Employment Report : JUL 2023

Employment by Staff Group JUL 2023	WTE DEC 2019	WTE DEC 2022	WTE JUN 2023	WTE JUL 2023	WTE change since DEC 2019	% WTE Change since Dec 2019	WTE change since DEC 2022	% WTE Change since Dec 2022	WTE change since JUN 2023	No. JUL 2023
<b>Overall</b>	<b>5,545</b>	<b>5,972</b>	<b>6,084</b>	<b>6,060</b>	<b>+515</b>	<b>+9.3%</b>	<b>+88</b>	<b>+1.5%</b>	<b>-24</b>	<b>7,045</b>
Consultants	42	43	47	47	+4	+10.6%	+3	+7.8%	0	54
Registrars	75	91	86	106	+31	+40.8%	+15	+16.9%	+20	111
SHO/ Interns	36	43	43	29	-7	-18.8%	-14	-31.9%	-14	31
Medical/ Dental, other	59	57	59	59	0	-0.1%	+1	+2.3%	-1	71
<b>Medical &amp; Dental</b>	<b>212</b>	<b>234</b>	<b>235</b>	<b>240</b>	<b>+28</b>	<b>+13.4%</b>	<b>+6</b>	<b>+2.7%</b>	<b>+5</b>	<b>267</b>
Nurse/ Midwife Manager	309	331	338	336	+28	+8.9%	+6	+1.7%	-1	361
Nurse/ Midwife Specialist & AN/MP	93	141	160	157	+65	+69.7%	+16	+11.2%	-3	169
Staff Nurse/ Staff Midwife	898	916	907	900	+2	+0.2%	-16	-1.7%	-7	1,033
Public Health Nurse	192	187	184	179	-13	-6.8%	-9	-4.6%	-6	214
<i>Nursing/ Midwifery awaiting registration</i>	5	7	0	1	-4	-89.5%	-7	-92.9%	+0	1
<i>Post-registration Nurse/ Midwife Student</i>	4	14	6	1	-3	-75.0%	-13	-93.1%	-5	1
<i>Pre-registration Nurse/ Midwife Intern</i>	0	4	23	23	+23	+19,066.7%	+19	+467.9%	+0	46
Nursing/ Midwifery Student	9	25	29	25	+16	+176.2%	-1	-3.9%	-5	48
Nursing/ Midwifery other	2	4	5	5	+3	+125.0%	+1	+12.5%	0	5
<b>Nursing &amp; Midwifery</b>	<b>1,502</b>	<b>1,604</b>	<b>1,623</b>	<b>1,601</b>	<b>+99</b>	<b>+6.6%</b>	<b>-4</b>	<b>-0.2%</b>	<b>-23</b>	<b>1,830</b>
Therapy Professions	338	421	440	427	+88	+26.1%	+5	+1.3%	-14	492
Health Science/ Diagnostics	6	10	11	11	+4	+65.6%	+1	+10.5%	+0	11
Social Care	245	300	306	315	+69	+28.3%	+15	+4.9%	+8	374
Pharmacy	5	6	6	6	+1	+26.9%	0	-0.9%	0	7
Psychologists	73	88	94	93	+20	+27.0%	+5	+5.8%	-1	106
Social Workers	84	102	103	100	+16	+19.2%	-2	-2.4%	-3	118
H&SC, Other	59	77	78	69	+10	+16.3%	-8	-10.8%	-10	90
<b>Health &amp; Social Care Professionals</b>	<b>811</b>	<b>1,004</b>	<b>1,038</b>	<b>1,020</b>	<b>+209</b>	<b>+25.8%</b>	<b>+16</b>	<b>+1.5%</b>	<b>-19</b>	<b>1,198</b>
Management (VIII & above)	56	70	71	71	+15	+27.3%	+1	+1.0%	+0	73
Administrative/ Supervisory (V to VII)	134	235	256	253	+120	+89.6%	+18	+7.6%	-3	266
Clerical (III & IV)	468	451	487	488	+20	+4.3%	+37	+8.1%	+1	560
<b>Management &amp; Administrative</b>	<b>657</b>	<b>757</b>	<b>813</b>	<b>812</b>	<b>+155</b>	<b>+23.6%</b>	<b>+55</b>	<b>+7.3%</b>	<b>-1</b>	<b>899</b>
Support	158	140	142	137	-20	-13.0%	-3	-2.0%	-5	201
Maintenance/ Technical	68	79	78	79	+11	+15.6%	0	-0.6%	+0	80
<b>General Support</b>	<b>226</b>	<b>219</b>	<b>220</b>	<b>216</b>	<b>-10</b>	<b>-4.4%</b>	<b>-3</b>	<b>-1.5%</b>	<b>-5</b>	<b>281</b>
Health Care Assistants	1,367	1,412	1,440	1,462	+94	+6.9%	+50	+3.5%	+22	1,682
Home Help	499	407	387	382	-117	-23.5%	-25	-6.2%	-5	499
Care, other	271	335	327	327	+57	+20.9%	-7	-2.2%	+0	389
<b>Patient &amp; Client Care</b>	<b>2,137</b>	<b>2,154</b>	<b>2,153</b>	<b>2,171</b>	<b>+34</b>	<b>+1.6%</b>	<b>+17</b>	<b>+0.8%</b>	<b>+18</b>	<b>2,570</b>



### WTE Change by Staff Category

■ WTE change since DEC 2019 ■ WTE change since DEC 2022 ■ WTE change since JUN 2023



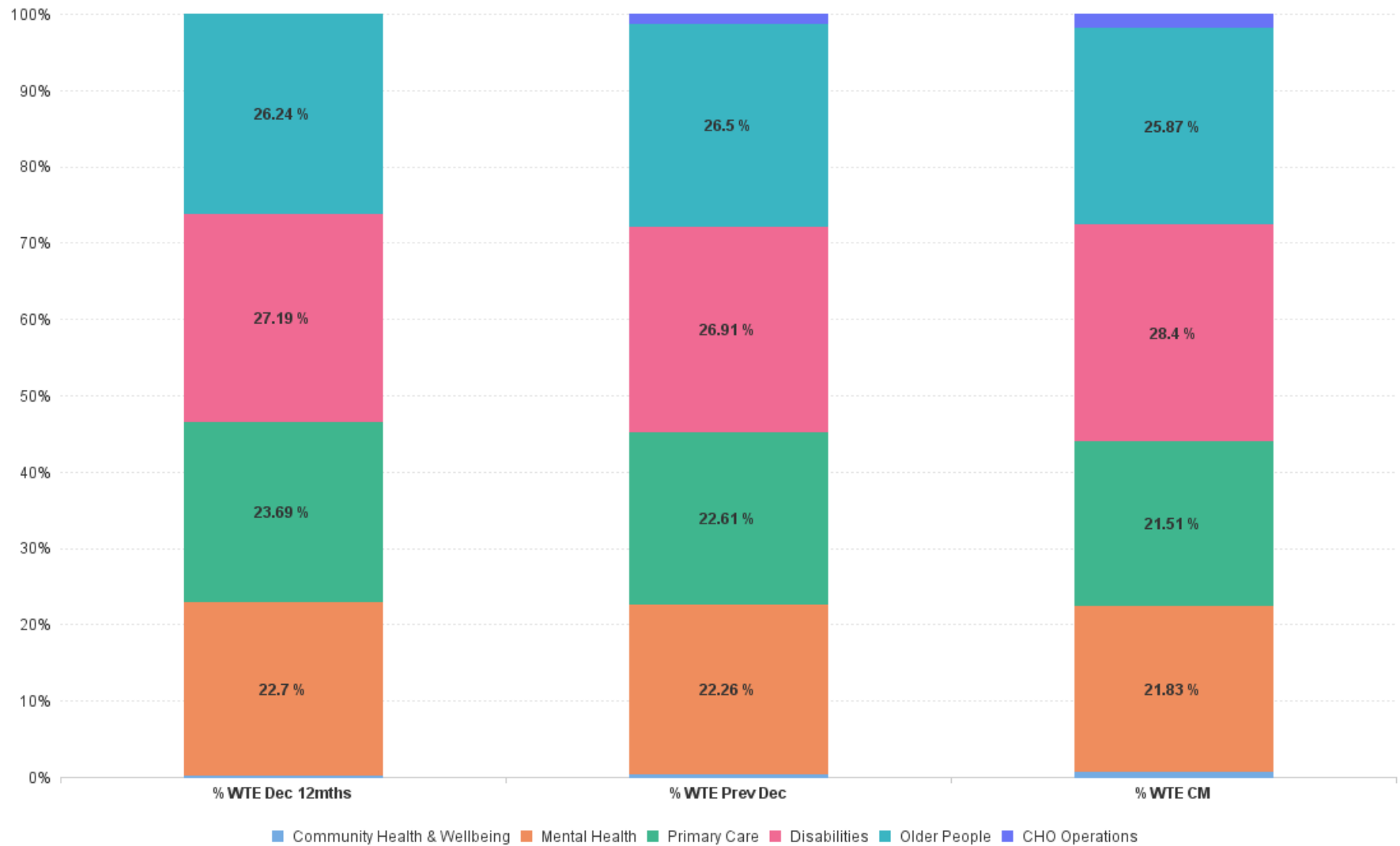
# Employment Report by Care Group : JUL 2023

CHO 2 JUL 2023

Care Group JUL 2023	WTE DEC 2019	WTE DEC 2022	WTE JUN 2023	WTE JUL 2023	WTE change since DEC 2019	% WTE Change since Dec 2019	WTE change since DEC 2022	% WTE Change since Dec 2022	WTE change since JUN 2023	No. JUL 2023
<b>Overall</b>	<b>5,545</b>	<b>5,972</b>	<b>6,084</b>	<b>6,060</b>	<b>+515</b>	<b>+9.3%</b>	<b>+88</b>	<b>+1.5%</b>	<b>-24</b>	<b>7,045</b>
Community Health & Wellbeing		21	46	36	+36		+15	+69.5%	-10	49
Mental Health	1,308	1,329	1,344	1,323	+14	+1.1%	-6	-0.5%	-21	1,454
Primary Care	1,134	1,351	1,316	1,303	+170	+15.0%	-47	-3.5%	-13	1,514
Disabilities	1,497	1,607	1,690	1,721	+224	+15.0%	+114	+7.1%	+31	2,091
Older People	1,606	1,582	1,578	1,568	-38	-2.4%	-15	-0.9%	-10	1,824
CHO Operations		82	110	108	+108		+26	+32.3%	-2	113
<b>Community Services</b>	<b>5,545</b>	<b>5,972</b>	<b>6,084</b>	<b>6,060</b>	<b>+515</b>	<b>+9.3%</b>	<b>+88</b>	<b>+1.5%</b>	<b>-24</b>	<b>7,045</b>



## % Total by Care Group



# Employment Report by HSE/S38 : JUL 2023

CHO 2 JUL 2023

Administration JUL 2023	WTE DEC 2019	WTE DEC 2022	WTE JUN 2023	WTE JUL 2023	WTE change since DEC 2019	% WTE Change since Dec 2019	WTE change since DEC 2022	% WTE Change since Dec 2022	WTE change since JUN 2023	No. JUL 2023
<b>Overall</b>	<b>5,545</b>	<b>5,972</b>	<b>6,084</b>	<b>6,060</b>	<b>+515</b>	<b>+9.3%</b>	<b>+88</b>	<b>+1.5%</b>	<b>-24</b>	<b>7,045</b>
Health Service Executive	4,256	4,596	4,652	4,593	+337	+7.9%	-3	-0.1%	-59	5,233
Section 38 Voluntary Agencies	1,288	1,376	1,432	1,467	+178	+13.8%	+91	+6.6%	+35	1,812



# Employment Report by HSE.S38: JUL 2023

## Health Service Executive

HSE&S38 JUL 2023	WTE DEC 2019	WTE DEC 2022	WTE JUN 2023	WTE JUL 2023	WTE change since DEC 2019	% WTE Change since Dec 2019	WTE change since DEC 2022	% WTE Change since Dec 2022	WTE change since JUN 2023	No. JUL 2023
<b>Total Health Service Executive</b>	<b>4,256</b>	<b>4,596</b>	<b>4,652</b>	<b>4,593</b>	<b>+337</b>	<b>+7.9%</b>	<b>-3</b>	<b>-0.1%</b>	<b>-59</b>	<b>5,233</b>
Consultants	40	41	45	44	+4	+11.2%	+3	+8.3%	-0	51
Registrars	73	90	84	105	+32	+43.3%	+15	+17.1%	+21	110
SHO/ Interns	36	42	43	28	-8	-21.6%	-14	-32.7%	-15	30
Medical/ Dental, other	59	57	59	59	-0	-0.1%	+1	+2.3%	-1	71
<b>Medical &amp; Dental</b>	<b>208</b>	<b>230</b>	<b>231</b>	<b>236</b>	<b>+28</b>	<b>+13.6%</b>	<b>+6</b>	<b>+2.7%</b>	<b>+5</b>	<b>262</b>
Nurse/ Midwife Manager	241	266	273	272	+31	+12.7%	+6	+2.4%	-1	289
Nurse/ Midwife Specialist & AN/MP	88	137	156	154	+66	+75.5%	+17	+12.5%	-2	165
Staff Nurse/ Staff Midwife	778	789	784	780	+2	+0.3%	-9	-1.1%	-4	884
Public Health Nurse	192	187	184	179	-13	-6.8%	-9	-4.6%	-6	214
<i>Nursing/ Midwifery awaiting registration</i>	5	7	0	1	-4	-89.5%	+1	-92.9%	+0	1
<i>Post-registration Nurse/ Midwife Student</i>	4	14	6	1	-3	-75.0%	-3	-93.1%	-5	1
<i>Pre-registration Nurse/ Midwife Intern</i>	0	4	23	23	+23	+19,066.7%	+0	+467.9%	+0	46
Nursing/ Midwifery Student	9	25	29	25	+16	+176.2%	-1	-3.9%	-5	48
Nursing/ Midwifery other	2	4	5	5	+3	+125.0%	+1	+12.5%	-0	5
<b>Nursing &amp; Midwifery</b>	<b>1,310</b>	<b>1,408</b>	<b>1,432</b>	<b>1,414</b>	<b>+104</b>	<b>+8.0%</b>	<b>+6</b>	<b>+0.4%</b>	<b>-19</b>	<b>1,605</b>
Therapy Professions	304	387	403	390	+86	+28.4%	+3	+0.8%	-13	447
Health Science/ Diagnostics	6	10	11	11	+4	+65.6%	+1	+10.5%	+0	11
Social Care	50	48	47	49	-1	-1.6%	+1	+2.0%	+1	54
Pharmacy	5	6	6	6	+1	+26.9%	-0	-0.9%	-0	7
Psychologists	59	74	79	79	+20	+33.0%	+5	+7.2%	-0	89
Social Workers	58	77	77	74	+16	+27.0%	-3	-3.7%	-3	83
H&SC, Other	43	66	67	58	+15	+34.1%	-8	-11.8%	-9	75
<b>Health &amp; Social Care Professionals</b>	<b>525</b>	<b>667</b>	<b>690</b>	<b>666</b>	<b>+141</b>	<b>+26.8%</b>	<b>-0</b>	<b>-0.1%</b>	<b>-24</b>	<b>766</b>
Management (VIII & above)	43	58	57	56	+14	+31.5%	-1	-1.9%	-0	58
Administrative/ Supervisory (V to VII)	99	184	197	194	+95	+96.2%	+9	+5.1%	-3	205
Clerical (III & IV)	431	410	440	438	+7	+1.6%	+28	+6.8%	-2	499
<b>Management &amp; Administrative</b>	<b>573</b>	<b>652</b>	<b>694</b>	<b>688</b>	<b>+115</b>	<b>+20.2%</b>	<b>+36</b>	<b>+5.5%</b>	<b>-6</b>	<b>762</b>
Support	113	94	95	94	-19	-17.1%	-1	-0.7%	-1	123
Maintenance/ Technical	63	75	74	74	+11	+16.9%	-1	-1.4%	-1	75
<b>General Support</b>	<b>176</b>	<b>169</b>	<b>169</b>	<b>167</b>	<b>-9</b>	<b>-5.0%</b>	<b>-2</b>	<b>-1.0%</b>	<b>-2</b>	<b>198</b>
Health Care Assistants	821	846	843	835	+13	+1.6%	-11	-1.3%	-8	913
Home Help	499	407	387	382	-117	-23.5%	-25	-6.2%	-5	499
Care, other	144	218	206	205	+60	+41.9%	-13	-6.0%	-2	228
<b>Patient &amp; Client Care</b>	<b>1,465</b>	<b>1,470</b>	<b>1,436</b>	<b>1,421</b>	<b>-44</b>	<b>-3.0%</b>	<b>-49</b>	<b>-3.3%</b>	<b>-14</b>	<b>1,640</b>

## Section 38 Voluntary Agencies

HSE&S38 JUL 2023	WTE DEC 2019	WTE DEC 2022	WTE JUN 2023	WTE JUL 2023	WTE change since DEC 2019	% WTE Change since Dec 2019	WTE change since DEC 2022	% WTE Change since Dec 2022	WTE change since JUN 2023	No. JUL 2023
<b>Total Section 38 Voluntary Agencies</b>	<b>1,288</b>	<b>1,376</b>	<b>1,432</b>	<b>1,467</b>	<b>+178</b>	<b>+13.8%</b>	<b>+91</b>	<b>+6.6%</b>	<b>+35</b>	<b>1,812</b>
Consultants	2	2	2	2	+0	+0.8%	+0	+0.0%	+0	3
Registrars	2	1	2	1	-1	-50.0%	+0	+0.0%	-1	1
SHO/ Interns		1		1	+1		+0	+0.0%	+1	1
<b>Medical &amp; Dental</b>	<b>4</b>	<b>4</b>	<b>4</b>	<b>4</b>	<b>+0</b>	<b>+0.5%</b>	<b>+0</b>	<b>+0.0%</b>	<b>+0</b>	<b>5</b>
Nurse/ Midwife Manager	67	65	65	64	-3	-4.6%	-1	-0.9%	-1	72
Nurse/ Midwife Specialist & AN/MP	5	4	3	3	-2	-34.5%	-1	-28.5%	-0	4
Staff Nurse/ Staff Midwife	120	127	123	119	-0	-0.4%	-7	-5.7%	-3	149
<b>Nursing &amp; Midwifery</b>	<b>192</b>	<b>196</b>	<b>191</b>	<b>187</b>	<b>-5</b>	<b>-2.7%</b>	<b>-9</b>	<b>-4.6%</b>	<b>-4</b>	<b>225</b>
Therapy Professions	35	34	37	37	+2	+6.1%	+3	+7.3%	-0	45
Social Care	195	252	259	266	+70	+35.9%	+14	+5.5%	+7	320
Psychologists	14	14	15	14	+0	+1.7%	-0	-1.4%	-1	17
Social Workers	25	25	26	26	+0	+1.1%	+0	+1.8%	-0	35
H&SC, Other	16	11	11	11	-5	-32.0%	-1	-4.7%	-1	15
<b>Health &amp; Social Care Professionals</b>	<b>285</b>	<b>337</b>	<b>348</b>	<b>353</b>	<b>+68</b>	<b>+23.8%</b>	<b>+16</b>	<b>+4.7%</b>	<b>+5</b>	<b>432</b>
Management (VIII & above)	13	13	14	15	+2	+13.6%	+2	+13.9%	+1	15
Administrative/ Supervisory (V to VII)	35	51	59	59	+25	+70.9%	+9	+16.7%	+0	61
Clerical (III & IV)	37	42	47	50	+13	+35.6%	+9	+21.3%	+4	61
<b>Management &amp; Administrative</b>	<b>85</b>	<b>105</b>	<b>120</b>	<b>124</b>	<b>+40</b>	<b>+46.7%</b>	<b>+19</b>	<b>+18.2%</b>	<b>+5</b>	<b>137</b>
Support	45	46	47	44	-1	-2.5%	-2	-4.6%	-4	78
Maintenance/ Technical	5	4	4	5	-0	-0.8%	+1	+13.8%	+1	5
<b>General Support</b>	<b>50</b>	<b>50</b>	<b>51</b>	<b>49</b>	<b>-1</b>	<b>-2.3%</b>	<b>-2</b>	<b>-3.0%</b>	<b>-3</b>	<b>83</b>
Health Care Assistants	546	566	597	627	+81	+14.9%	+61	+10.7%	+30	769
Care, other	126	117	121	123	-4	-2.9%	+6	+4.8%	+2	161
<b>Patient &amp; Client Care</b>	<b>672</b>	<b>683</b>	<b>718</b>	<b>750</b>	<b>+77</b>	<b>+11.5%</b>	<b>+66</b>	<b>+9.7%</b>	<b>+32</b>	<b>930</b>

## CHO 2 by S38 Agency: JUL 2023

### Bros. of Charity Galway

JUL 2023	WTE DEC 2019	WTE DEC 2022	WTE JUN 2023	WTE JUL 2023	WTE change since DEC 2019	% WTE Change since Dec 2019	WTE change since DEC 2022	% WTE Change since Dec 2022	WTE change since JUN 2023	No. JUL 2023
<b>Total Bros. of Charity Galway</b>	<b>939</b>				<b>-939.5</b>	<b>-100.0%</b>				
Consultants	2				-2.4	-100.0%				
Registrars	2				-2.0	-100.0%				
<b>Medical &amp; Dental</b>	<b>4</b>				<b>-4.4</b>	<b>-100.0%</b>				
Nurse/ Midwife Manager	53				-52.8	-100.0%				
Nurse/ Midwife Specialist & AN/MP	4				-3.9	-100.0%				
Staff Nurse/ Staff Midwife	94				-93.7	-100.0%				
<b>Nursing &amp; Midwifery</b>	<b>150</b>				<b>-150.5</b>	<b>-100.0%</b>				
Therapy Professions	27				-27.3	-100.0%				
Social Care	112				-112.4	-100.0%				
Psychologists	11				-10.9	-100.0%				
Social Workers	20				-19.7	-100.0%				
H&SC, Other	13				-13.3	-100.0%				
<b>Health &amp; Social Care Professionals</b>	<b>184</b>				<b>-183.6</b>	<b>-100.0%</b>				
Management (VIII & above)	12				-11.9	-100.0%				
Administrative/ Supervisory (V to VII)	24				-24.0	-100.0%				
Clerical (III & IV)	29				-28.9	-100.0%				
<b>Management &amp; Administrative</b>	<b>65</b>				<b>-64.7</b>	<b>-100.0%</b>				
Support	38				-38.5	-100.0%				
Maintenance/ Technical	5				-5.0	-100.0%				
<b>General Support</b>	<b>43</b>				<b>-43.5</b>	<b>-100.0%</b>				
Health Care Assistants	438				-437.7	-100.0%				
Care, other	55				-55.1	-100.0%				
<b>Patient &amp; Client Care</b>	<b>493</b>				<b>-492.8</b>	<b>-100.0%</b>				



Bros. of Charity Roscommon

JUL 2023	WTE DEC 2019	WTE DEC 2022	WTE JUN 2023	WTE JUL 2023	WTE change since DEC 2019	% WTE Change since Dec 2019	WTE change since DEC 2022	% WTE Change since Dec 2022	WTE change since JUN 2023	No. JUL 2023
Total Bros. of Charity Roscommon	349				-349.0	-100.0%				
Nurse/ Midwife Manager	15				-14.5	-100.0%				
Nurse/ Midwife Specialist & AN/MP	1				-1.0	-100.0%				
Staff Nurse/ Staff Midwife	26				-26.1	-100.0%				
Nursing & Midwifery	42				-41.6	-100.0%				
Therapy Professions	7				-7.3	-100.0%				
Social Care	83				-83.0	-100.0%				
Psychologists	3				-3.1	-100.0%				
Social Workers	6				-5.7	-100.0%				
H&SC, Other	3				-2.6	-100.0%				
Health & Social Care Professionals	102				-101.7	-100.0%				
Management (VIII & above)	1				-1.0	-100.0%				
Administrative/ Supervisory (V to VII)	11				-10.7	-100.0%				
Clerical (III & IV)	8				-8.3	-100.0%				
Management & Administrative	20				-20.0	-100.0%				
Support	6				-6.2	-100.0%				
General Support	6				-6.2	-100.0%				
Health Care Assistants	108				-108.1	-100.0%				
Care, other	71				-71.4	-100.0%				
Patient & Client Care	180				-179.5	-100.0%				

## Bros. of Charity West Region

JUL 2023	WTE DEC 2019	WTE DEC 2022	WTE JUN 2023	WTE JUL 2023	WTE change since DEC 2019	% WTE Change since Dec 2019	WTE change since DEC 2022	% WTE Change since Dec 2022	WTE change since JUN 2023	No. JUL 2023
<b>Total Bros. of Charity West Region</b>		<b>1,376</b>	<b>1,432</b>	<b>1,467</b>	<b>+1,466.8</b>		<b>+90.9</b>	<b>+6.6%</b>	<b>+35.0</b>	<b>1,812</b>
Consultants		2	2	2	+2.4		+0.0	+0.0%	+0.0	3
Registrars		1	2	1	+1.0		+0.0	+0.0%	-1.0	1
SHO/ Interns		1		1	+1.0		+0.0	+0.0%	+1.0	1
<b>Medical &amp; Dental</b>		<b>4</b>	<b>4</b>	<b>4</b>	<b>+4.4</b>		<b>+0.0</b>	<b>+0.0%</b>	<b>+0.0</b>	<b>5</b>
Nurse/ Midwife Manager		65	65	64	+64.3		-0.6	-0.9%	-0.5	72
Nurse/ Midwife Specialist & AN/MP		4	3	3	+3.2		-1.3	-28.5%	-0.1	4
Staff Nurse/ Staff Midwife		127	123	119	+119.3		-7.2	-5.7%	-3.4	149
<b>Nursing &amp; Midwifery</b>		<b>196</b>	<b>191</b>	<b>187</b>	<b>+186.8</b>		<b>-9.1</b>	<b>-4.6%</b>	<b>-4.0</b>	<b>225</b>
Therapy Professions		34	37	37	+36.7		+2.5	+7.3%	-0.2	45
Social Care		252	259	266	+265.7		+13.8	+5.5%	+6.6	320
Psychologists		14	15	14	+14.3		-0.2	-1.4%	-0.5	17
Social Workers		25	26	26	+25.7		+0.5	+1.8%	-0.2	35
H&SC, Other		11	11	11	+10.8		-0.5	-4.7%	-0.7	15
<b>Health &amp; Social Care Professionals</b>		<b>337</b>	<b>348</b>	<b>353</b>	<b>+353.1</b>		<b>+16.0</b>	<b>+4.7%</b>	<b>+5.0</b>	<b>432</b>
Management (VIII & above)		13	14	15	+14.7		+1.8	+13.9%	+0.7	15
Administrative/ Supervisory (V to VII)		51	59	59	+59.3		+8.5	+16.7%	+0.4	61
Clerical (III & IV)		42	47	50	+50.4		+8.9	+21.3%	+3.6	61
<b>Management &amp; Administrative</b>		<b>105</b>	<b>120</b>	<b>124</b>	<b>+124.3</b>		<b>+19.1</b>	<b>+18.2%</b>	<b>+4.7</b>	<b>137</b>
Support		46	47	44	+43.6		-2.1	-4.6%	-3.8	78
Maintenance/ Technical		4	4	5	+5.0		+0.6	+13.8%	+1.0	5
<b>General Support</b>		<b>50</b>	<b>51</b>	<b>49</b>	<b>+48.5</b>		<b>-1.5</b>	<b>-3.0%</b>	<b>-2.8</b>	<b>83</b>
Health Care Assistants		566	597	627	+626.9		+60.7	+10.7%	+29.9	769
Care, other		117	121	123	+122.8		+5.6	+4.8%	+2.2	161
<b>Patient &amp; Client Care</b>		<b>683</b>	<b>718</b>	<b>750</b>	<b>+749.7</b>		<b>+66.3</b>	<b>+9.7%</b>	<b>+32.0</b>	<b>930</b>

# Employment Report by Community Health & Wellbeing JUL 2023

CHO 2 JUL 2023

Community Health & Wellbeing JUL 2023	WTE DEC 2019	WTE DEC 2022	WTE JUN 2023	WTE JUL 2023	WTE change since DEC 2019	% WTE Change since Dec 2019	WTE change since DEC 2022	% WTE Change since Dec 2022	WTE change since JUN 2023	No. JUL 2023
<b>Overall</b>		<b>42</b>	<b>93</b>	<b>72</b>	<b>+72</b>		<b>+30</b>	<b>+69.5%</b>	<b>-21</b>	<b>98</b>
Nurse/ Midwife Manager			4	4	+4		+4		+0	4
<b>Nursing &amp; Midwifery</b>			<b>4</b>	<b>4</b>	<b>+4</b>		<b>+4</b>		<b>+0</b>	<b>4</b>
Pharmacy			2	2	+2		+2		+0	2
H&SC, Other			20	3	+3		+3		-17	22
<b>Health &amp; Social Care Professionals</b>			<b>22</b>	<b>5</b>	<b>+5</b>		<b>+5</b>		<b>-17</b>	<b>24</b>
Management (VIII & above)		2	8	7	+7		+5	+243.0%	-1	8
Administrative/ Supervisory (V to VII)		8	16	16	+16		+8	+97.3%	0	16
Clerical (III & IV)		2	12	11	+11		+10	+565.9%	-1	12
<b>Management &amp; Administrative</b>		<b>12</b>	<b>36</b>	<b>34</b>	<b>+34</b>		<b>+22</b>	<b>+190.3%</b>	<b>-2</b>	<b>36</b>
Care, other		31	31	29	+29		-1	-4.8%	-2	34
<b>Patient &amp; Client Care</b>		<b>31</b>	<b>31</b>	<b>29</b>	<b>+29</b>		<b>-1</b>	<b>-4.8%</b>	<b>-2</b>	<b>34</b>



# Employment Report by Mental Health JUL 2023

CHO 2 JUL 2023

Mental HealthJUL 2023	WTE DEC 2019	WTE DEC 2022	WTE JUN 2023	WTE JUL 2023	WTE change since DEC 2019	% WTE Change since Dec 2019	WTE change since DEC 2022	% WTE Change since Dec 2022	WTE change since JUN 2023	No. JUL 2023
<b>Overall</b>	<b>1,308</b>	<b>1,329</b>	<b>1,344</b>	<b>1,323</b>	<b>+14</b>	<b>+1.1%</b>	<b>-6</b>	<b>-0.5%</b>	<b>-21</b>	<b>1,454</b>
Consultants	38	37	39	39	+2	+4.9%	+3	+6.8%	0	45
Registrars	33	37	35	37	+3	+10.3%	0	-0.9%	+2	38
SHO/ Interns	35	39	38	28	-7	-19.3%	-11	-27.5%	-10	30
Medical/ Dental, other	1	1			-1	-100.0%	-1	-100.0%		
<b>Medical &amp; Dental</b>	<b>107</b>	<b>114</b>	<b>112</b>	<b>104</b>	<b>-3</b>	<b>-2.4%</b>	<b>-10</b>	<b>-8.4%</b>	<b>-8</b>	<b>113</b>
Nurse/ Midwife Manager	146	142	147	148	+2	+1.4%	+6	+4.0%	+1	156
Nurse/ Midwife Specialist & AN/MP	67	88	96	96	+28	+41.7%	+8	+8.9%	-1	101
Staff Nurse/ Staff Midwife	357	353	339	333	-24	-6.7%	-20	-5.6%	-6	360
Nursing/ Midwifery awaiting registration	5	7	0	1	-4	-89.5%	-7	-92.9%	+0	1
Pre-registration Nurse/ Midwife Intern	0	4	23	23	+23	+19,066.7%	+19	+467.9%	+0	46
Nursing/ Midwifery Student	5	11	23	24	+19	+382.5%	+12	+112.7%	+0	47
Nursing/ Midwifery other	2	4	5	5	+3	+125.0%	+1	+12.5%	0	5
<b>Nursing &amp; Midwifery</b>	<b>577</b>	<b>598</b>	<b>610</b>	<b>605</b>	<b>+27</b>	<b>+4.7%</b>	<b>+7</b>	<b>+1.1%</b>	<b>-6</b>	<b>669</b>
Therapy Professions	45	55	56	53	+8	+17.1%	-1	-2.7%	-3	60
Social Care	15	14	13	12	-3	-19.6%	-2	-14.1%	-1	13
Pharmacy	3	3	2	2	0	-2.0%	0	-1.2%	0	3
Psychologists	34	37	41	41	+8	+23.6%	+4	+11.9%	+1	46
Social Workers	41	44	43	42	+2	+4.4%	-1	-3.1%	-1	48
H&SC, Other	3	3	3	3	0	-4.7%	+0	+1.1%	0	3
<b>Health &amp; Social Care Professionals</b>	<b>140</b>	<b>155</b>	<b>158</b>	<b>154</b>	<b>+14</b>	<b>+10.3%</b>	<b>0</b>	<b>-0.2%</b>	<b>-4</b>	<b>173</b>
Management (VIII & above)	5	3	3	3	-2	-40.4%	0	-0.7%	0	3
Administrative/ Supervisory (V to VII)	24	25	27	25	+1	+5.9%	0	-0.7%	-2	27
Clerical (III & IV)	109	98	105	102	-7	-6.3%	+5	+4.6%	-3	117
<b>Management &amp; Administrative</b>	<b>138</b>	<b>126</b>	<b>134</b>	<b>130</b>	<b>-8</b>	<b>-5.5%</b>	<b>+4</b>	<b>+3.4%</b>	<b>-4</b>	<b>147</b>
Support	36	27	23	23	-13	-36.1%	-3	-12.9%	0	25
Maintenance/ Technical	27	36	36	35	+8	+29.2%	-1	-2.8%	-1	35
<b>General Support</b>	<b>63</b>	<b>62</b>	<b>59</b>	<b>58</b>	<b>-5</b>	<b>-8.2%</b>	<b>-4</b>	<b>-7.1%</b>	<b>-1</b>	<b>60</b>
Health Care Assistants	215	202	202	201	-14	-6.4%	-1	-0.5%	-1	211
Care, other	69	73	69	71	+2	+2.5%	-2	-2.5%	+2	81
<b>Patient &amp; Client Care</b>	<b>284</b>	<b>275</b>	<b>271</b>	<b>272</b>	<b>-12</b>	<b>-4.2%</b>	<b>-3</b>	<b>-1.0%</b>	<b>+1</b>	<b>292</b>



# Employment Report by Primary Care JUL 2023

CHO 2 JUL 2023

Primary Care JUL 2023	WTE DEC 2019	WTE DEC 2022	WTE JUN 2023	WTE JUL 2023	WTE change since DEC 2019	% WTE Change since Dec 2019	WTE change since DEC 2022	% WTE Change since Dec 2022	WTE change since JUN 2023	No. JUL 2023
<b>Overall</b>	<b>1,134</b>	<b>1,351</b>	<b>1,316</b>	<b>1,303</b>	<b>+170</b>	<b>+15.0%</b>	<b>-47</b>	<b>-3.5%</b>	<b>-13</b>	<b>1,514</b>
Consultants	1	3	4	4	+3	+210.4%	+1	+29.3%	0	5
Registrars	40	53	50	68	+28	+70.6%	+16	+29.7%	+19	72
SHO/ Interns	1	3	5		-1	-100.0%	-3	-100.0%	-5	
Medical/ Dental, other	46	46	48	48	+2	+4.5%	+2	+4.7%	-1	59
<b>Medical &amp; Dental</b>	<b>88</b>	<b>104</b>	<b>107</b>	<b>120</b>	<b>+32</b>	<b>+36.3%</b>	<b>+16</b>	<b>+15.0%</b>	<b>+13</b>	<b>136</b>
Nurse/ Midwife Manager	27	34	33	32	+5	+17.4%	-2	-4.6%	-1	35
Nurse/ Midwife Specialist & AN/MP	17	38	45	44	+26	+151.5%	+5	+14.3%	-2	49
Staff Nurse/ Staff Midwife	74	92	102	107	+33	+44.4%	+15	+15.8%	+5	131
Public Health Nurse	191	186	183	178	-13	-7.0%	-9	-4.7%	-6	213
Post-registration Nurse/ Midwife Student	4	14	6	1	-3	-75.0%	-13	-93.1%	-5	1
Nursing/ Midwifery Student	4	14	6	1	-3	-75.0%	-13	-93.1%	-5	1
<b>Nursing &amp; Midwifery</b>	<b>313</b>	<b>365</b>	<b>369</b>	<b>361</b>	<b>+48</b>	<b>+15.2%</b>	<b>-4</b>	<b>-1.0%</b>	<b>-8</b>	<b>429</b>
Therapy Professions	226	291	281	269	+43	+19.1%	-22	-7.4%	-12	312
Health Science/ Diagnostics	6	9	10	10	+4	+69.6%	+1	+11.0%	+0	10
Social Care	8	7	6	6	-3	-33.7%	-1	-15.0%	0	6
Pharmacy	1	1	1	1	+0	+0.0%	+0	+0.0%	+0	1
Psychologists	24	32	28	27	+3	+12.8%	-5	-14.3%	-1	32
Social Workers	7	19	16	15	+9	+123.9%	-3	-17.8%	-1	16
H&SC, Other	40	63	53	53	+12	+31.1%	-10	-16.2%	0	60
<b>Health &amp; Social Care Professionals</b>	<b>312</b>	<b>421</b>	<b>394</b>	<b>381</b>	<b>+68</b>	<b>+21.9%</b>	<b>-40</b>	<b>-9.4%</b>	<b>-13</b>	<b>437</b>
Management (VIII & above)	33	29	24	24	-9	-25.9%	-4	-15.1%	+0	25
Administrative/ Supervisory (V to VII)	62	85	83	82	+20	+33.0%	-2	-2.7%	0	88
Clerical (III & IV)	238	219	219	220	-17	-7.3%	+1	+0.5%	+2	255
<b>Management &amp; Administrative</b>	<b>333</b>	<b>332</b>	<b>325</b>	<b>327</b>	<b>-6</b>	<b>-1.7%</b>	<b>-5</b>	<b>-1.6%</b>	<b>+2</b>	<b>368</b>
Support	21	17	19	19	-2	-8.4%	+2	+10.4%	0	39
Maintenance/ Technical	9	11	10	10	+1	+10.9%	-1	-9.2%	0	10
<b>General Support</b>	<b>30</b>	<b>28</b>	<b>29</b>	<b>29</b>	<b>-1</b>	<b>-2.6%</b>	<b>+1</b>	<b>+2.8%</b>	<b>0</b>	<b>49</b>
Health Care Assistants	14	33	30	28	+13	+93.2%	-5	-15.8%	-2	31
Care, other	43	68	61	58	+15	+34.8%	-10	-14.4%	-3	64
<b>Patient &amp; Client Care</b>	<b>57</b>	<b>100</b>	<b>91</b>	<b>85</b>	<b>+28</b>	<b>+49.4%</b>	<b>-15</b>	<b>-14.8%</b>	<b>-6</b>	<b>95</b>



# Employment Report by Disabilities JUL 2023

CHO 2 JUL 2023

Disabilities JUL 2023	WTE DEC 2019	WTE DEC 2022	WTE JUN 2023	WTE JUL 2023	WTE change since DEC 2019	% WTE Change since Dec 2019	WTE change since DEC 2022	% WTE Change since Dec 2022	WTE change since JUN 2023	No. JUL 2023
<b>Overall</b>	<b>1,497</b>	<b>1,607</b>	<b>1,690</b>	<b>1,721</b>	<b>+224</b>	<b>+15.0%</b>	<b>+114</b>	<b>+7.1%</b>	<b>+31</b>	<b>2,091</b>
Consultants	3	3	3	3	+0	+0.6%	+0	+0.0%	+0	4
Registrars	2	1	2	1	-1	-50.0%	+0	+0.0%	-1	1
SHO/ Interns		1		1	+1		+0	+0.0%	+1	1
Medical/ Dental, other	1	1	1	1	+0	+0.0%	+0	+0.0%	+0	1
<b>Medical &amp; Dental</b>	<b>6</b>	<b>6</b>	<b>6</b>	<b>6</b>	<b>+0</b>	<b>+0.3%</b>	<b>+0</b>	<b>+0.0%</b>	<b>+0</b>	<b>7</b>
Nurse/ Midwife Manager	77	76	76	75	-3	-3.5%	-1	-1.1%	-2	83
Nurse/ Midwife Specialist & AN/MP	6	6	5	5	-1	-11.6%	-1	-19.7%	0	6
Staff Nurse/ Staff Midwife	165	166	159	156	-10	-5.8%	-10	-6.0%	-4	193
<b>Nursing &amp; Midwifery</b>	<b>249</b>	<b>248</b>	<b>241</b>	<b>236</b>	<b>-13</b>	<b>-5.3%</b>	<b>-12</b>	<b>-4.9%</b>	<b>-5</b>	<b>282</b>
Therapy Professions	41	48	70	69	+28	+67.0%	+21	+44.2%	-1	81
Social Care	222	279	288	297	+75	+33.9%	+18	+6.3%	+9	355
Psychologists	16	19	25	25	+9	+55.9%	+5	+26.8%	-1	28
Social Workers	26	27	28	28	+2	+5.9%	+1	+3.1%	0	38
H&SC, Other	16	11	11	11	-5	-32.0%	-1	-4.7%	-1	15
<b>Health &amp; Social Care Professionals</b>	<b>321</b>	<b>385</b>	<b>423</b>	<b>429</b>	<b>+108</b>	<b>+33.7%</b>	<b>+44</b>	<b>+11.5%</b>	<b>+7</b>	<b>517</b>
Management (VIII & above)	16	17	18	19	+3	+17.2%	+2	+10.5%	+1	19
Administrative/ Supervisory (V to VII)	40	64	74	73	+33	+81.6%	+9	+14.7%	0	76
Clerical (III & IV)	50	54	63	67	+17	+34.8%	+13	+23.9%	+4	79
<b>Management &amp; Administrative</b>	<b>106</b>	<b>135</b>	<b>155</b>	<b>159</b>	<b>+53</b>	<b>+50.0%</b>	<b>+24</b>	<b>+17.9%</b>	<b>+4</b>	<b>174</b>
Support	45	46	47	44	-1	-2.5%	-2	-4.6%	-4	78
Maintenance/ Technical	13	12	11	12	-1	-4.6%	+1	+4.8%	+1	13
<b>General Support</b>	<b>58</b>	<b>58</b>	<b>59</b>	<b>56</b>	<b>-2</b>	<b>-3.0%</b>	<b>-2</b>	<b>-2.7%</b>	<b>-3</b>	<b>91</b>
Health Care Assistants	623	641	670	697	+73	+11.8%	+55	+8.6%	+27	843
Care, other	134	134	137	139	+4	+3.3%	+4	+3.3%	+2	177
<b>Patient &amp; Client Care</b>	<b>757</b>	<b>776</b>	<b>807</b>	<b>835</b>	<b>+78</b>	<b>+10.3%</b>	<b>+60</b>	<b>+7.7%</b>	<b>+29</b>	<b>1,020</b>



# Employment Report by Older People JUL 2023

CHO 2 JUL 2023

Older People JUL 2023	WTE DEC 2019	WTE DEC 2022	WTE JUN 2023	WTE JUL 2023	WTE change since DEC 2019	% WTE Change since Dec 2019	WTE change since DEC 2022	% WTE Change since Dec 2022	WTE change since JUN 2023	No. JUL 2023
<b>Overall</b>	<b>1,606</b>	<b>1,582</b>	<b>1,578</b>	<b>1,568</b>	<b>-38</b>	<b>-2.4%</b>	<b>-15</b>	<b>-0.9%</b>	<b>-10</b>	<b>1,824</b>
Medical/ Dental, other	11	10	10	10	-1	-10.0%	+0	+1.7%	+0	11
<b>Medical &amp; Dental</b>	<b>11</b>	<b>10</b>	<b>10</b>	<b>10</b>	<b>-1</b>	<b>-10.0%</b>	<b>+0</b>	<b>+1.7%</b>	<b>+0</b>	<b>11</b>
Nurse/ Midwife Manager	58	74	71	71	+13	+22.3%	-3	-3.6%	0	76
Nurse/ Midwife Specialist & AN/MP	2	7	11	12	+10	+495.5%	+5	+70.6%	+1	12
Staff Nurse/ Staff Midwife	301	305	307	304	+3	+0.9%	-1	-0.2%	-3	349
Public Health Nurse	1	1	1	1	+0	+25.0%	+0	+0.0%	+0	1
<b>Nursing &amp; Midwifery</b>	<b>362</b>	<b>386</b>	<b>390</b>	<b>388</b>	<b>+26</b>	<b>+7.1%</b>	<b>+2</b>	<b>+0.4%</b>	<b>-2</b>	<b>438</b>
Therapy Professions	26	28	34	35	+10	+38.4%	+7	+26.3%	+1	39
Health Science/ Diagnostics	1	1	1	1	+0	+26.7%	+0	+4.1%	+0	1
Pharmacy	1	1	1	1	0	-47.5%	0	-1.9%	0	1
Social Workers	10	13	3	3	-7	-70.9%	-10	-77.0%	+0	3
<b>Health &amp; Social Care Professionals</b>	<b>37</b>	<b>42</b>	<b>38</b>	<b>40</b>	<b>+2</b>	<b>+5.9%</b>	<b>-3</b>	<b>-6.3%</b>	<b>+1</b>	<b>44</b>
Management (VIII & above)	2	6	6	6	+4	+197.5%	0	-0.8%	0	6
Administrative/ Supervisory (V to VII)	8	16	16	15	+8	+100.9%	0	-2.5%	-1	17
Clerical (III & IV)	72	64	74	73	+1	+1.4%	+9	+13.6%	-1	81
<b>Management &amp; Administrative</b>	<b>81</b>	<b>86</b>	<b>96</b>	<b>94</b>	<b>+13</b>	<b>+15.6%</b>	<b>+8</b>	<b>+9.6%</b>	<b>-2</b>	<b>104</b>
Support	56	51	52	51	-5	-8.1%	+1	+2.0%	-1	59
Maintenance/ Technical	19	20	21	21	+2	+12.3%	+1	+4.9%	0	22
<b>General Support</b>	<b>75</b>	<b>71</b>	<b>73</b>	<b>73</b>	<b>-2</b>	<b>-3.0%</b>	<b>+2</b>	<b>+2.8%</b>	<b>-1</b>	<b>81</b>
Health Care Assistants	515	536	538	536	+21	+4.2%	+1	+0.1%	-2	597
Home Help	499	407	387	382	-117	-23.5%	-25	-6.2%	-5	499
Care, other	24	45	45	45	+21	+85.3%	+0	+0.8%	+1	50
<b>Patient &amp; Client Care</b>	<b>1,039</b>	<b>988</b>	<b>970</b>	<b>964</b>	<b>-75</b>	<b>-7.2%</b>	<b>-24</b>	<b>-2.4%</b>	<b>-6</b>	<b>1146</b>



## Employment Report by CHO Operations JUL 2023

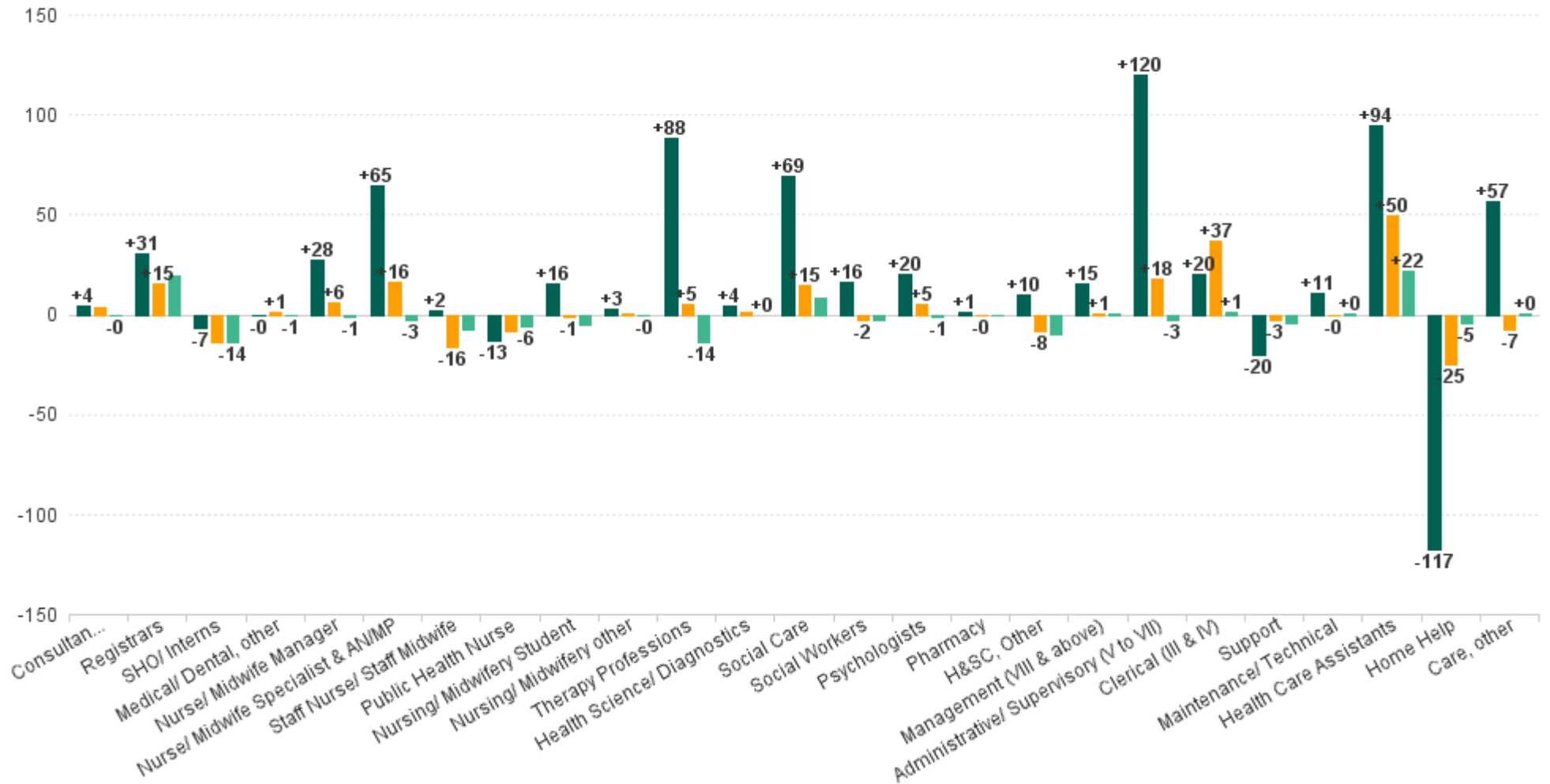
CHO 2 JUL 2023

CHO Operations JUL 2023	WTE DEC 2019	WTE DEC 2022	WTE JUN 2023	WTE JUL 2023	WTE change since DEC 2019	% WTE Change since Dec 2019	WTE change since DEC 2022	% WTE Change since Dec 2022	WTE change since JUN 2023	No. JUL 2023
<b>Overall</b>		<b>82</b>	<b>110</b>	<b>108</b>	<b>+108</b>		<b>+26</b>	<b>+32.3%</b>	<b>-2</b>	<b>113</b>
Nurse/ Midwife Manager		5	9	8	+8		+3	+54.7%	0	9
Nurse/ Midwife Specialist & AN/MP		2	2	1	+1		-1	-51.8%	-1	1
<b>Nursing &amp; Midwifery</b>		<b>7</b>	<b>10</b>	<b>9</b>	<b>+9</b>		<b>+2</b>	<b>+26.6%</b>	<b>-1</b>	<b>10</b>
Pharmacy		2	1	1	+1		-1	-57.4%	0	1
Social Workers			12	11	+11		+11		-1	13
H&SC, Other			1	1	+1		+1		+0	1
<b>Health &amp; Social Care Professionals</b>		<b>2</b>	<b>14</b>	<b>13</b>	<b>+13</b>		<b>+11</b>	<b>+652.3%</b>	<b>-1</b>	<b>15</b>
Management (VIII & above)		15	16	16	+16		+1	+6.1%	0	16
Administrative/ Supervisory (V to VII)		42	49	49	+49		+7	+17.9%	+0	50
Clerical (III & IV)		16	21	21	+21		+5	+28.8%	0	22
<b>Management &amp; Administrative</b>		<b>73</b>	<b>85</b>	<b>86</b>	<b>+86</b>		<b>+13</b>	<b>+17.9%</b>	<b>+0</b>	<b>88</b>



## WTE Change by Staff Group

■ WTE change since DEC 2019 ■ WTE change since DEC 2022 ■ WTE change since JUN 2023



Employment Report by WTE, Headcount, Gender, Full-Time / Part-Time etc. JUL 2023

CHO 2 JUL 2023

JUL 2023	WTE JUL 2023	No. JUL 2023	WTE : No	Number Male %	Number Female %	Male WTE : No.	Female WTE : No	Perm Count %	Perm Count Male %	Perm Count Female %	Fulltime Count %	Part time Count %	FT Count Male %	FT Count Female %
<b>Total</b>	<b>6,060</b>	<b>7,045</b>	<b>1:0.9</b>	<b>19.79%</b>	<b>80.21%</b>	<b>1:0.9</b>	<b>1:0.8</b>	<b>87.44%</b>	<b>16.30%</b>	<b>71.14%</b>	<b>64.06%</b>	<b>35.94%</b>	<b>75.68%</b>	<b>61.19%</b>
Consultant Medicine	4	5	1:0.8		100.00%	1:	1:0.8	80.00%		80.00%	60.00%	40.00%		60.00%
Consultant Paediatrics	1	1	1:1		100.00%	1:	1:1	100.00%		100.00%	100.00%			100.00%
Consultant Psychiatry	42	48	1:0.9	37.50%	62.50%	1:0.9	1:0.8	56.25%	25.00%	31.25%	83.33%	16.67%	88.89%	80.00%
<b>Consultants</b>	<b>47</b>	<b>54</b>	<b>1:0.9</b>	<b>33.33%</b>	<b>66.67%</b>	<b>1:0.9</b>	<b>1:0.8</b>	<b>59.26%</b>	<b>22.22%</b>	<b>37.04%</b>	<b>81.48%</b>	<b>18.52%</b>	<b>88.89%</b>	<b>77.78%</b>
Dentists	23	26	1:0.9	30.77%	69.23%	1:1	1:0.8	96.15%	30.77%	65.38%	69.23%	30.77%	87.50%	61.11%
Other Medical	36	45	1:0.8	37.78%	62.22%	1:0.7	1:0.9	80.00%	26.67%	53.33%	44.44%	55.56%	41.18%	46.43%
<b>Medical/ Dental, other</b>	<b>59</b>	<b>71</b>	<b>1:0.8</b>	<b>35.21%</b>	<b>64.79%</b>	<b>1:0.8</b>	<b>1:0.9</b>	<b>85.92%</b>	<b>28.17%</b>	<b>57.75%</b>	<b>53.52%</b>	<b>46.48%</b>	<b>56.00%</b>	<b>52.17%</b>
Registrar	89	93	1:1	44.09%	55.91%	1:1	1:0.9	1.08%		1.08%	97.85%	2.15%	100.00%	96.15%
Senior Registrar	17	18	1:0.9	44.44%	55.56%	1:1	1:0.9				94.44%	5.56%	100.00%	90.00%
<b>Registrars</b>	<b>106</b>	<b>111</b>	<b>1:1</b>	<b>44.14%</b>	<b>55.86%</b>	<b>1:1</b>	<b>1:0.9</b>	<b>0.90%</b>		<b>0.90%</b>	<b>97.30%</b>	<b>2.70%</b>	<b>100.00%</b>	<b>95.16%</b>
Senior House Officer	29	31	1:0.9	41.94%	58.06%	1:1	1:0.9				93.55%	6.45%	100.00%	88.89%
<b>SHO/ Interns</b>	<b>29</b>	<b>31</b>	<b>1:0.9</b>	<b>41.94%</b>	<b>58.06%</b>	<b>1:1</b>	<b>1:0.9</b>				<b>93.55%</b>	<b>6.45%</b>	<b>100.00%</b>	<b>88.89%</b>
<b>Medical &amp; Dental</b>	<b>240</b>	<b>267</b>	<b>1:0.9</b>	<b>39.33%</b>	<b>60.67%</b>	<b>1:0.9</b>	<b>1:0.9</b>	<b>35.21%</b>	<b>11.99%</b>	<b>23.22%</b>	<b>82.02%</b>	<b>17.98%</b>	<b>87.62%</b>	<b>78.40%</b>
Clinical Nurse/ Midwife Manager	266	288	1:0.9	26.39%	73.61%	1:1	1:0.9	96.53%	26.04%	70.49%	89.24%	10.76%	100.00%	85.38%
Director Nursing/Midwifery, Assistant	49	51	1:1	17.65%	82.35%	1:1	1:1	94.12%	17.65%	76.47%	84.31%	15.69%	100.00%	80.95%
Director of Nursing/Midwifery	22	22	1:1	13.64%	86.36%	1:1	1:1	100.00%	13.64%	86.36%	100.00%		100.00%	100.00%
<b>Nurse/ Midwife Manager</b>	<b>336</b>	<b>361</b>	<b>1:0.9</b>	<b>24.38%</b>	<b>75.62%</b>	<b>1:1</b>	<b>1:0.9</b>	<b>96.40%</b>	<b>24.10%</b>	<b>72.30%</b>	<b>89.20%</b>	<b>10.80%</b>	<b>100.00%</b>	<b>85.71%</b>
Advanced Nurse/ Midwife Practitioner	25	25	1:1	20.00%	80.00%	1:1	1:1	96.00%	20.00%	76.00%	96.00%	4.00%	80.00%	100.00%
Clinical Nurse/ Midwife Specialist	133	144	1:0.9	9.03%	90.97%	1:1	1:0.9	100.00%	9.03%	90.97%	91.67%	8.33%	100.00%	90.84%
<b>Nurse/ Midwife Specialist &amp; AN/MP</b>	<b>157</b>	<b>169</b>	<b>1:0.9</b>	<b>10.65%</b>	<b>89.35%</b>	<b>1:1</b>	<b>1:0.9</b>	<b>99.41%</b>	<b>10.65%</b>	<b>88.76%</b>	<b>92.31%</b>	<b>7.69%</b>	<b>94.44%</b>	<b>92.05%</b>
Nursing Education/Clinical	5	5	1:0.9		100.00%	1:	1:0.9	100.00%		100.00%	100.00%			100.00%
<b>Nursing/ Midwifery other</b>	<b>5</b>	<b>5</b>	<b>1:0.9</b>		<b>100.00%</b>	<b>1:</b>	<b>1:0.9</b>	<b>100.00%</b>		<b>100.00%</b>	<b>100.00%</b>			<b>100.00%</b>
Nursing/ Midwifery awaiting registration	1	1	1:0.5		100.00%	1:	1:0.5				100.00%			100.00%
Post-registration Nurse/ Midwife Student	1	1	1:1		100.00%	1:	1:1				100.00%			100.00%
Pre-registration Nurse/ Midwife Intern	23	46	1:0.5	6.52%	93.48%	1:0.5	1:0.5				100.00%		100.00%	100.00%
<b>Nursing/ Midwifery Student</b>	<b>25</b>	<b>48</b>	<b>1:0.5</b>	<b>6.25%</b>	<b>93.75%</b>	<b>1:0.5</b>	<b>1:0.5</b>				<b>100.00%</b>		<b>100.00%</b>	<b>100.00%</b>
Public Health Nurse	179	214	1:0.8		100.00%	1:	1:0.8	99.07%		99.07%	75.23%	24.77%		75.23%
<b>Public Health Nurse</b>	<b>179</b>	<b>214</b>	<b>1:0.8</b>		<b>100.00%</b>	<b>1:</b>	<b>1:0.8</b>	<b>99.07%</b>		<b>99.07%</b>	<b>75.23%</b>	<b>24.77%</b>		<b>75.23%</b>
Staff Midwives	1	1	1:1		100.00%	1:	1:1				100.00%			100.00%
Staff Nurse [Intellectual Disability]	116	146	1:0.8	7.53%	92.47%	1:0.9	1:0.8	91.10%	6.85%	84.25%	50.00%	50.00%	72.73%	48.15%
Staff Nurse [Psychiatric]	342	371	1:0.9	23.99%	76.01%	1:0.9	1:0.9	90.57%	19.68%	70.89%	84.37%	15.63%	82.02%	85.11%
Staff Nurses [General/ Children's]	440	515	1:0.9	6.02%	93.98%	1:0.9	1:0.8	90.87%	5.83%	85.05%	60.78%	39.22%	93.55%	58.68%
<b>Staff Nurse/ Staff Midwife</b>	<b>900</b>	<b>1,033</b>	<b>1:0.9</b>	<b>12.68%</b>	<b>87.32%</b>	<b>1:0.9</b>	<b>1:0.9</b>	<b>90.71%</b>	<b>10.94%</b>	<b>79.77%</b>	<b>67.76%</b>	<b>32.24%</b>	<b>83.97%</b>	<b>65.41%</b>
<b>Nursing &amp; Midwifery</b>	<b>1,601</b>	<b>1,830</b>	<b>1:0.9</b>	<b>13.11%</b>	<b>86.89%</b>	<b>1:0.9</b>	<b>1:0.9</b>	<b>91.26%</b>	<b>11.91%</b>	<b>79.34%</b>	<b>76.07%</b>	<b>23.93%</b>	<b>90.83%</b>	<b>73.84%</b>
Audiology	9	9	1:1		100.00%	1:	1:1	88.89%		88.89%	88.89%	11.11%		88.89%
Clinical Engineering	1	1	1:1	100.00%		1:1	1:	100.00%	100.00%		100.00%		100.00%	
Radiographers	1	1	1:0.8		100.00%	1:	1:0.8	100.00%		100.00%		100.00%		
<b>Health Science/ Diagnostics</b>	<b>11</b>	<b>11</b>	<b>1:1</b>	<b>9.09%</b>	<b>90.91%</b>	<b>1:1</b>	<b>1:1</b>	<b>90.91%</b>	<b>9.09%</b>	<b>81.82%</b>	<b>81.82%</b>	<b>18.18%</b>	<b>100.00%</b>	<b>80.00%</b>
Counsellor Therapists	23	28	1:0.8	28.57%	71.43%	1:0.8	1:0.8	100.00%	28.57%	71.43%	60.71%	39.29%	75.00%	55.00%
Dental Hygienists	5	6	1:0.8		100.00%	1:	1:0.8	100.00%		100.00%	66.67%	33.33%		66.67%
Other Health & Social Care	38	43	1:0.9	20.93%	79.07%	1:1	1:0.9	93.02%	20.93%	72.09%	76.74%	23.26%	88.89%	73.53%
Play Therapists/ Specialists	2	2	1:0.8		100.00%	1:	1:0.8	100.00%		100.00%	50.00%	50.00%		50.00%
Vaccinators	1	11	1:0.1	9.09%	90.91%	1:1	1:0					100.00%		
<b>H&amp;SC, Other</b>	<b>69</b>	<b>90</b>	<b>1:0.8</b>	<b>20.00%</b>	<b>80.00%</b>	<b>1:0.9</b>	<b>1:0.7</b>	<b>84.44%</b>	<b>18.89%</b>	<b>65.56%</b>	<b>61.11%</b>	<b>38.89%</b>	<b>77.78%</b>	<b>56.94%</b>
Pharmacists	5	6	1:0.8	16.67%	83.33%	1:1	1:0.8	66.67%	16.67%	50.00%	66.67%	33.33%	100.00%	60.00%
Pharmacy Technicians	1	1	1:0.8		100.00%	1:	1:0.8	100.00%		100.00%		100.00%		
<b>Pharmacy</b>	<b>6</b>	<b>7</b>	<b>1:0.8</b>	<b>14.29%</b>	<b>85.71%</b>	<b>1:1</b>	<b>1:0.8</b>	<b>71.43%</b>	<b>14.29%</b>	<b>57.14%</b>	<b>57.14%</b>	<b>42.86%</b>	<b>100.00%</b>	<b>50.00%</b>
<b>Psychologists</b>	<b>93</b>	<b>106</b>	<b>1:0.9</b>	<b>15.09%</b>	<b>84.91%</b>	<b>1:1</b>	<b>1:0.9</b>	<b>98.11%</b>	<b>14.15%</b>	<b>83.96%</b>	<b>73.58%</b>	<b>26.42%</b>	<b>100.00%</b>	<b>68.89%</b>
<b>Social Care</b>	<b>315</b>	<b>374</b>	<b>1:0.8</b>	<b>17.91%</b>	<b>82.09%</b>	<b>1:0.9</b>	<b>1:0.8</b>	<b>86.63%</b>	<b>15.78%</b>	<b>70.86%</b>	<b>54.81%</b>	<b>45.19%</b>	<b>59.70%</b>	<b>53.75%</b>
<b>Social Workers</b>	<b>100</b>	<b>118</b>	<b>1:0.8</b>	<b>16.95%</b>	<b>83.05%</b>	<b>1:0.9</b>	<b>1:0.8</b>	<b>94.07%</b>	<b>14.41%</b>	<b>79.66%</b>	<b>69.49%</b>	<b>30.51%</b>	<b>90.00%</b>	<b>65.31%</b>
Dietitians	31	35	1:0.9		100.00%	1:	1:0.9	100.00%		100.00%	77.14%	22.86%		77.14%
Occupational Therapists	142	164	1:0.9	7.32%	92.68%	1:0.9	1:0.9	96.34%	6.10%	90.24%	79.27%	20.73%	83.33%	78.95%
Orthoptists	4	4	1:1		100.00%	1:	1:1	75.00%		75.00%	100.00%			100.00%
Physiotherapists	120	138	1:0.9	22.46%	77.54%	1:1	1:0.8	94.20%	20.29%	73.91%	70.29%	29.71%	90.32%	64.49%



JUL 2023	WTE JUL 2023	No. JUL 2023	WTE : No	Number Male %	Number Female %	Male WTE : No.	Female WTE : No	Perm Count %	Perm Count Male %	Perm Count Female %	Fulltime Count %	Part time Count %	FT Count Male %	FT Count Female %
<b>Total</b>	<b>6,060</b>	<b>7,045</b>	<b>1:0.9</b>	<b>19.79%</b>	<b>80.21%</b>	<b>1:0.9</b>	<b>1:0.8</b>	<b>87.44%</b>	<b>16.30%</b>	<b>71.14%</b>	<b>64.06%</b>	<b>35.94%</b>	<b>75.68%</b>	<b>61.19%</b>
Podiatrists & Chiroprodists	21	24	1:0.9	8.33%	91.67%	1:1	1:0.9	95.83%	8.33%	87.50%	75.00%	25.00%	100.00%	72.73%
Speech & Language Therapists	109	127	1:0.9	0.79%	99.21%	1:1	1:0.9	92.91%	0.79%	92.13%	80.31%	19.69%	100.00%	80.16%
<b>Therapy Professions</b>	<b>427</b>	<b>492</b>	<b>1:0.9</b>	<b>9.35%</b>	<b>90.65%</b>	<b>1:1</b>	<b>1:0.9</b>	<b>94.92%</b>	<b>8.33%</b>	<b>86.59%</b>	<b>76.83%</b>	<b>23.17%</b>	<b>89.13%</b>	<b>75.56%</b>
<b>Health &amp; Social Care Professionals</b>	<b>1,020</b>	<b>1,198</b>	<b>1:0.9</b>	<b>14.11%</b>	<b>85.89%</b>	<b>1:0.9</b>	<b>1:0.8</b>	<b>91.57%</b>	<b>12.60%</b>	<b>78.96%</b>	<b>67.70%</b>	<b>32.30%</b>	<b>77.51%</b>	<b>66.08%</b>
Middle Management (V-VII)	253	266	1:1	17.29%	82.71%	1:1	1:0.9	95.11%	16.92%	78.20%	90.98%	9.02%	95.65%	90.00%
<b>Administrative/ Supervisory (V to VII)</b>	<b>253</b>	<b>266</b>	<b>1:1</b>	<b>17.29%</b>	<b>82.71%</b>	<b>1:1</b>	<b>1:0.9</b>	<b>95.11%</b>	<b>16.92%</b>	<b>78.20%</b>	<b>90.98%</b>	<b>9.02%</b>	<b>95.65%</b>	<b>90.00%</b>
General Administrative (III & IV)	488	560	1:0.9	9.11%	90.89%	1:0.9	1:0.9	92.50%	7.86%	84.64%	71.79%	28.21%	80.39%	70.92%
<b>Clerical (III &amp; IV)</b>	<b>488</b>	<b>560</b>	<b>1:0.9</b>	<b>9.11%</b>	<b>90.89%</b>	<b>1:0.9</b>	<b>1:0.9</b>	<b>92.50%</b>	<b>7.86%</b>	<b>84.64%</b>	<b>71.79%</b>	<b>28.21%</b>	<b>80.39%</b>	<b>70.92%</b>
Executive Management	13	14	1:1	71.43%	28.57%	1:1	1:0.9	71.43%	50.00%	21.43%	100.00%		100.00%	100.00%
Senior Management (VIII & GM)	58	59	1:1	38.98%	61.02%	1:1	1:1	93.22%	37.29%	55.93%	98.31%	1.69%	100.00%	97.22%
<b>Management (VIII &amp; above)</b>	<b>71</b>	<b>73</b>	<b>1:1</b>	<b>45.21%</b>	<b>54.79%</b>	<b>1:1</b>	<b>1:1</b>	<b>89.04%</b>	<b>39.73%</b>	<b>49.32%</b>	<b>98.63%</b>	<b>1.37%</b>	<b>100.00%</b>	<b>97.50%</b>
<b>Management &amp; Administrative</b>	<b>812</b>	<b>899</b>	<b>1:0.9</b>	<b>14.46%</b>	<b>85.54%</b>	<b>1:0.9</b>	<b>1:0.9</b>	<b>92.99%</b>	<b>13.13%</b>	<b>79.87%</b>	<b>79.64%</b>	<b>20.36%</b>	<b>90.77%</b>	<b>77.76%</b>
Maintenance	77	78	1:1	98.72%	1.28%	1:1	1:1	100.00%	98.72%	1.28%	94.87%	5.13%	94.81%	100.00%
Technical Services	2	2	1:1	100.00%		1:1	1:	50.00%	50.00%		100.00%		100.00%	
<b>Maintenance/ Technical</b>	<b>79</b>	<b>80</b>	<b>1:1</b>	<b>98.75%</b>	<b>1.25%</b>	<b>1:1</b>	<b>1:1</b>	<b>98.75%</b>	<b>97.50%</b>	<b>1.25%</b>	<b>95.00%</b>	<b>5.00%</b>	<b>94.94%</b>	<b>100.00%</b>
Catering	31	34	1:0.9	26.47%	73.53%	1:1	1:0.9	100.00%	26.47%	73.53%	61.76%	38.24%	88.89%	52.00%
Household Services	59	87	1:0.7	19.54%	80.46%	1:0.7	1:0.7	88.51%	13.79%	74.71%	31.03%	68.97%	35.29%	30.00%
Other Support	37	70	1:0.5	74.29%	25.71%	1:0.7	1:0.2	57.14%	52.86%	4.29%	18.57%	81.43%	21.15%	11.11%
Portering	10	10	1:1	90.00%	10.00%	1:1	1:1	100.00%	90.00%	10.00%	100.00%		100.00%	100.00%
<b>Support</b>	<b>137</b>	<b>201</b>	<b>1:0.7</b>	<b>43.28%</b>	<b>56.72%</b>	<b>1:0.7</b>	<b>1:0.7</b>	<b>80.10%</b>	<b>33.33%</b>	<b>46.77%</b>	<b>35.32%</b>	<b>64.68%</b>	<b>39.08%</b>	<b>32.46%</b>
<b>General Support</b>	<b>216</b>	<b>281</b>	<b>1:0.8</b>	<b>59.07%</b>	<b>40.93%</b>	<b>1:0.8</b>	<b>1:0.7</b>	<b>85.41%</b>	<b>51.60%</b>	<b>33.81%</b>	<b>52.31%</b>	<b>47.69%</b>	<b>65.66%</b>	<b>33.04%</b>
Home Care Services	45	51	1:0.9	21.57%	78.43%	1:0.8	1:0.9	98.04%	19.61%	78.43%	84.31%	15.69%	81.82%	85.00%
Other Care Grades	114	126	1:0.9	29.37%	70.63%	1:1	1:0.9	96.83%	28.57%	68.25%	83.33%	16.67%	83.78%	83.15%
Pastoral Care	6	8	1:0.7	87.50%	12.50%	1:0.7	1:1	25.00%	25.00%		62.50%	37.50%	57.14%	100.00%
Workshop Services	162	204	1:0.8	32.84%	67.16%	1:0.9	1:0.8	86.27%	28.43%	57.84%	46.57%	53.43%	64.18%	37.96%
<b>Care, other</b>	<b>327</b>	<b>389</b>	<b>1:0.8</b>	<b>31.36%</b>	<b>68.64%</b>	<b>1:0.9</b>	<b>1:0.8</b>	<b>89.97%</b>	<b>27.25%</b>	<b>62.72%</b>	<b>63.75%</b>	<b>36.25%</b>	<b>71.31%</b>	<b>60.30%</b>
Attendant/ Aide	195	225	1:0.9	28.44%	71.56%	1:0.9	1:0.9	87.11%	24.44%	62.67%	64.44%	35.56%	79.69%	58.39%
Health Care Assistant/ Care Assistant	1,240	1,429	1:0.9	26.66%	73.34%	1:0.9	1:0.9	81.95%	21.62%	60.32%	52.83%	47.17%	63.78%	48.85%
Health & Social Care Assistants	27	28	1:0.9	21.43%	78.57%	1:0.9	1:1	64.29%	10.71%	53.57%	89.29%	10.71%	100.00%	86.36%
<b>Health Care Assistants</b>	<b>1,462</b>	<b>1,682</b>	<b>1:0.9</b>	<b>26.81%</b>	<b>73.19%</b>	<b>1:0.9</b>	<b>1:0.9</b>	<b>82.34%</b>	<b>21.82%</b>	<b>60.52%</b>	<b>54.99%</b>	<b>45.01%</b>	<b>66.52%</b>	<b>50.77%</b>
Home Helps	382	499	1:0.8	2.20%	97.80%	1:0.9	1:0.8	97.80%	2.20%	95.59%	11.02%	88.98%		11.27%
<b>Home Help</b>	<b>382</b>	<b>499</b>	<b>1:0.8</b>	<b>2.20%</b>	<b>97.80%</b>	<b>1:0.9</b>	<b>1:0.8</b>	<b>97.80%</b>	<b>2.20%</b>	<b>95.59%</b>	<b>11.02%</b>	<b>88.98%</b>		<b>11.27%</b>
<b>Patient &amp; Client Care</b>	<b>2,171</b>	<b>2,570</b>	<b>1:0.8</b>	<b>22.72%</b>	<b>77.28%</b>	<b>1:0.9</b>	<b>1:0.8</b>	<b>86.50%</b>	<b>18.83%</b>	<b>67.67%</b>	<b>47.78%</b>	<b>52.22%</b>	<b>66.27%</b>	<b>42.35%</b>

## Employment Report by WTE, Headcount, Gender, Full-Time / Part-Time etc. JUL 2023

CHO 2 JUL 2023

JUL 2023	WTE JUL 2023	No. JUL 2023	WTE : No	Number Male %	Number Female %	Male WTE : No.	Female WTE : No	Perm Count %	Number Male %	Number Female %	Fulltime Count %	Part time Count %	FT Count Male %	FT Count Female %
<b>Total</b>	<b>6,060</b>	<b>7,045</b>	<b>1:0.9</b>	<b>19.79%</b>	<b>80.21%</b>	<b>1:0.9</b>	<b>1:0.8</b>	<b>87.44%</b>	<b>16.30%</b>	<b>71.14%</b>	<b>64.06%</b>	<b>35.94%</b>	<b>75.68%</b>	<b>61.19%</b>
Disabilities	1,721	2,091	1:0.8	23.43%	76.57%	1:0.9	1:0.8	81.64%	18.51%	63.13%	48.16%	51.84%	51.22%	47.22%
Mental Health	1,323	1,454	1:0.9	28.13%	71.87%	1:0.9	1:0.9	85.97%	23.25%	62.72%	85.90%	14.10%	91.93%	83.54%
Older People	1,568	1,824	1:0.9	14.47%	85.53%	1:0.9	1:0.8	96.16%	13.76%	82.40%	54.17%	45.83%	85.23%	48.91%
Primary Care	1,303	1,514	1:0.9	13.87%	86.13%	1:0.9	1:0.9	87.19%	10.24%	76.95%	74.70%	25.30%	87.14%	72.70%
CHO Operations	108	113	1:1	13.27%	86.73%	1:1	1:1	91.15%	10.62%	80.53%	94.69%	5.31%	100.00%	93.88%
Community Health & Wellbeing	36	49	1:0.7	12.24%	87.76%	1:1	1:0.7	53.06%	10.20%	42.86%	63.27%	36.73%	83.33%	60.47%



Employment by Grade Group JUL 2023	WTE DEC 2019	WTE DEC 2022	WTE JUN 2023	WTE JUL 2023	WTE change since DEC 2019	% WTE Change since Dec 2019	WTE change since DEC 2022	% WTE Change since Dec 2022	WTE change since JUN 2023	No. JUL 2023
<b>Overall</b>	<b>5,545</b>	<b>5,972</b>	<b>6,084</b>	<b>6,060</b>	<b>+515</b>	<b>+9.3%</b>	<b>+88</b>	<b>+1.5%</b>	<b>-24</b>	<b>7,045</b>
Consultant Medicine	1	3	4	4	+3	+288.0%	+1	+29.3%	0	5
Consultant Paediatrics	1	1	1	1	+0	+0.0%	+0	+0.0%	+0	1
Consultant Psychiatry	40	39	42	42	+2	+4.6%	+3	+6.4%	0	48
Consultant Surgery	0				0	-100.0%				
<b>Consultants</b>	<b>42</b>	<b>43</b>	<b>47</b>	<b>47</b>	<b>+4</b>	<b>+10.6%</b>	<b>+3</b>	<b>+7.8%</b>	<b>0</b>	<b>54</b>
Registrar	58	75	71	89	+31	+53.0%	+14	+19.2%	+17	93
Senior Registrar	17	16	15	17	0	-0.8%	+1	+6.0%	+2	18
<b>Registrars</b>	<b>75</b>	<b>91</b>	<b>86</b>	<b>106</b>	<b>+31</b>	<b>+40.8%</b>	<b>+15</b>	<b>+16.9%</b>	<b>+20</b>	<b>111</b>
Senior House Officer	36	43	43	29	-7	-18.8%	-14	-31.9%	-14	31
<b>SHO/ Interns</b>	<b>36</b>	<b>43</b>	<b>43</b>	<b>29</b>	<b>-7</b>	<b>-18.8%</b>	<b>-14</b>	<b>-31.9%</b>	<b>-14</b>	<b>31</b>
Dentists	21	23	23	23	+2	+8.3%	0	-1.1%	0	26
Other Medical	38	34	36	36	-2	-4.9%	+2	+4.6%	0	45
<b>Medical/ Dental, other</b>	<b>59</b>	<b>57</b>	<b>59</b>	<b>59</b>	<b>0</b>	<b>-0.1%</b>	<b>+1</b>	<b>+2.3%</b>	<b>-1</b>	<b>71</b>
<b>Medical &amp; Dental</b>	<b>212</b>	<b>234</b>	<b>235</b>	<b>240</b>	<b>+28.3</b>	<b>+13.4%</b>	<b>+10.7</b>	<b>+2.7%</b>	<b>5.17</b>	<b>+267</b>
Clinical Nurse/ Midwife Manager	241	259	266	266	+25	+10.4%	+7	+2.8%	0	288
Director Nursing/Midwifery, Assistant	45	47	49	49	+4	+9.4%	+2	+3.8%	+0	51
Director of Nursing/Midwifery	23	25	23	22	-2	-7.3%	-3	-13.1%	-1	22
<b>Nurse/ Midwife Manager</b>	<b>309</b>	<b>331</b>	<b>338</b>	<b>336</b>	<b>+28</b>	<b>+8.9%</b>	<b>+6</b>	<b>+1.7%</b>	<b>-1</b>	<b>361</b>
Advanced Nurse/ Midwife Practitioner	9	22	25	25	+16	+174.2%	+3	+13.0%	+0	25
Clinical Nurse/ Midwife Specialist	84	119	135	133	+49	+58.4%	+13	+10.9%	-3	144
<b>Nurse/ Midwife Specialist &amp; AN/MP</b>	<b>93</b>	<b>141</b>	<b>160</b>	<b>157</b>	<b>+65</b>	<b>+69.7%</b>	<b>+16</b>	<b>+11.2%</b>	<b>-3</b>	<b>169</b>
Staff Midwives			1	1	+1		+1		+0	1
Staff Nurse [Intellectual Disability]	90	124	120	116	+27	+29.7%	-8	-6.3%	-4	146
Staff Nurse [Psychiatric]	371	366	347	342	-29	-7.8%	-24	-6.5%	-5	371
Staff Nurses [General/ Children's]	437	426	439	440	+3	+0.8%	+15	+3.4%	+1	515
<b>Staff Nurse/ Staff Midwife</b>	<b>898</b>	<b>916</b>	<b>907</b>	<b>900</b>	<b>+2</b>	<b>+0.2%</b>	<b>-16</b>	<b>-1.7%</b>	<b>-7</b>	<b>1,033</b>
Public Health Nurse	192	187	184	179	-13	-6.8%	-9	-4.6%	-6	214
<b>Public Health Nurse</b>	<b>192</b>	<b>187</b>	<b>184</b>	<b>179</b>	<b>-13</b>	<b>-6.8%</b>	<b>-9</b>	<b>-4.6%</b>	<b>-6</b>	<b>214</b>
Nursing/ Midwifery awaiting registration	5	7	0	1	-4	-89.5%	-7	-92.9%	+0	1
Post-registration Nurse/ Midwife Student	4	14	6	1	-3	-75.0%	-13	-93.1%	-5	1
Pre-registration Nurse/ Midwife Intern	0	4	23	23	+23	+19,066.7%	+19	+467.9%	+0	46
<b>Nursing/ Midwifery Student</b>	<b>9</b>	<b>25</b>	<b>29</b>	<b>25</b>	<b>+16</b>	<b>+176.2%</b>	<b>-1</b>	<b>-3.9%</b>	<b>-5</b>	<b>48</b>
Nursing Education/Clinical	2	4	5	5	+3	+125.0%	+1	+12.5%	0	5
<b>Nursing/ Midwifery other</b>	<b>2</b>	<b>4</b>	<b>5</b>	<b>5</b>	<b>+3</b>	<b>+125.0%</b>	<b>+1</b>	<b>+12.5%</b>	<b>0</b>	<b>5</b>
<b>Nursing &amp; Midwifery</b>	<b>1,502</b>	<b>1,604</b>	<b>1,623</b>	<b>1,601</b>	<b>+99.1</b>	<b>+6.6%</b>	<b>+23.2</b>	<b>-0.2%</b>	<b>-22.56</b>	<b>+1,830</b>
Dietitians	20	33	32	31	+11	+57.4%	-2	-6.1%	-1	35
Occupational Therapists	117	146	148	142	+25	+21.7%	-3	-2.3%	-6	164
Orthoptists	2	4	4	4	+2	+150.0%	+0	+0.3%	+0	4
Physiotherapists	89	109	121	120	+31	+35.0%	+11	+10.3%	-1	138
Podiatrists & Chiropodists	7	20	22	21	+14	+197.6%	+1	+6.7%	-1	24
Speech & Language Therapists	105	111	114	109	+4	+4.2%	-2	-1.5%	-5	127
<b>Therapy Professions</b>	<b>338</b>	<b>421</b>	<b>440</b>	<b>427</b>	<b>+88</b>	<b>+26.1%</b>	<b>+5</b>	<b>+1.3%</b>	<b>-14</b>	<b>492</b>
Audiology	5	8	9	9	+4	+83.8%	+1	+12.4%	+0	9

Employment by Grade Group JUL 2023	WTE DEC 2019	WTE DEC 2022	WTE JUN 2023	WTE JUL 2023	WTE change since DEC 2019	% WTE Change since Dec 2019	WTE change since DEC 2022	% WTE Change since Dec 2022	WTE change since JUN 2023	No. JUL 2023
<b>Overall</b>	<b>5,545</b>	<b>5,972</b>	<b>6,084</b>	<b>6,060</b>	<b>+515</b>	<b>+9.3%</b>	<b>+88</b>	<b>+1.5%</b>	<b>-24</b>	<b>7,045</b>
Clinical Engineering	1	1	1	1	+0	+0.0%	+0	+0.0%	+0	1
Radiographers	1	1	1	1	+0	+26.7%	+0	+4.1%	+0	1
<b>Health Science/ Diagnostics</b>	<b>6</b>	<b>10</b>	<b>11</b>	<b>11</b>	<b>+4</b>	<b>+65.6%</b>	<b>+1</b>	<b>+10.5%</b>	<b>+0</b>	<b>11</b>
Social Care	245	300	306	315	+69	+28.3%	+15	+4.9%	+8	374
<b>Social Care</b>	<b>245</b>	<b>300</b>	<b>306</b>	<b>315</b>	<b>+69</b>	<b>+28.3%</b>	<b>+15</b>	<b>+4.9%</b>	<b>+8</b>	<b>374</b>
Pharmacists	4	5	5	5	+1	+28.4%	0	-0.8%	0	6
Pharmacy Technicians	1	1	1	1	+0	+18.2%	0	-1.3%	0	1
<b>Pharmacy</b>	<b>5</b>	<b>6</b>	<b>6</b>	<b>6</b>	<b>+1</b>	<b>+26.9%</b>	<b>0</b>	<b>-0.9%</b>	<b>0</b>	<b>7</b>
Psychologists	73	88	94	93	+20	+27.0%	+5	+5.8%	-1	106
<b>Psychologists</b>	<b>73</b>	<b>88</b>	<b>94</b>	<b>93</b>	<b>+20</b>	<b>+27.0%</b>	<b>+5</b>	<b>+5.8%</b>	<b>-1</b>	<b>106</b>
Social Workers	84	102	103	100	+16	+19.2%	-2	-2.4%	-3	118
<b>Social Workers</b>	<b>84</b>	<b>102</b>	<b>103</b>	<b>100</b>	<b>+16</b>	<b>+19.2%</b>	<b>-2</b>	<b>-2.4%</b>	<b>-3</b>	<b>118</b>
Counsellor Therapists	11	22	24	23	+12	+107.8%	+1	+3.3%	-1	28
Dental Hygienists	4	5	5	5	+0	+6.7%	0	-1.9%	0	6
Other Health & Social Care	40	37	38	38	-2	-4.9%	+0	+1.0%	+0	43
Play Therapists/ Specialists	4	2	2	2	-2	-58.2%	+0	+0.0%	+0	2
Vaccinators		11	10	1	+1		-9	-87.2%	-9	11
<b>H&amp;SC, Other</b>	<b>59</b>	<b>77</b>	<b>78</b>	<b>69</b>	<b>+10</b>	<b>+16.3%</b>	<b>-8</b>	<b>-10.8%</b>	<b>-10</b>	<b>90</b>
<b>Health &amp; Social Care Professionals</b>	<b>811</b>	<b>1,004</b>	<b>1,038</b>	<b>1,020</b>	<b>+208.8</b>	<b>+25.8%</b>	<b>+75.3</b>	<b>+1.5%</b>	<b>-18.97</b>	<b>+1,198</b>
Executive Management	10	13	14	13	+3	+31.0%	+0	+3.2%	-1	14
Senior Management (VIII & GM)	46	57	57	58	+12	+26.5%	+0	+0.5%	+1	59
<b>Management (VIII &amp; above)</b>	<b>56</b>	<b>70</b>	<b>71</b>	<b>71</b>	<b>+15</b>	<b>+27.3%</b>	<b>+1</b>	<b>+1.0%</b>	<b>+0</b>	<b>73</b>
Middle Management (V-VII)	133	235	256	253	+121	+91.1%	+18	+7.6%	-3	266
Other Administrative	1				-1	-100.0%				
<b>Administrative/ Supervisory (V to VII)</b>	<b>134</b>	<b>235</b>	<b>256</b>	<b>253</b>	<b>+120</b>	<b>+89.6%</b>	<b>+18</b>	<b>+7.6%</b>	<b>-3</b>	<b>266</b>
General Administrative (III & IV)	468	451	487	488	+20	+4.3%	+37	+8.1%	+1	560
<b>Clerical (III &amp; IV)</b>	<b>468</b>	<b>451</b>	<b>487</b>	<b>488</b>	<b>+20</b>	<b>+4.3%</b>	<b>+37</b>	<b>+8.1%</b>	<b>+1</b>	<b>560</b>
<b>Management &amp; Administrative</b>	<b>657</b>	<b>757</b>	<b>813</b>	<b>812</b>	<b>+155.1</b>	<b>+23.6%</b>	<b>+37.4</b>	<b>+7.3%</b>	<b>-0.9</b>	<b>+899</b>
Catering	40	33	31	31	-9	-21.4%	-1	-4.2%	+0	34
Household Services	63	58	61	59	-4	-6.3%	+1	+2.2%	-2	87
Other Support	39	38	40	37	-2	-4.8%	0	-0.7%	-2	70
Portering	16	12	10	10	-6	-38.6%	-2	-19.8%	0	10
<b>Support</b>	<b>158</b>	<b>140</b>	<b>142</b>	<b>137</b>	<b>-20</b>	<b>-13.0%</b>	<b>-3</b>	<b>-2.0%</b>	<b>-5</b>	<b>201</b>
Maintenance	68	78	77	77	+9	+12.7%	-1	-1.9%	-1	78
Technical Services		1	1	2	+2		+1	+100.0%	+1	2
<b>Maintenance/ Technical</b>	<b>68</b>	<b>79</b>	<b>78</b>	<b>79</b>	<b>+11</b>	<b>+15.6%</b>	<b>0</b>	<b>-0.6%</b>	<b>+0</b>	<b>80</b>
<b>General Support</b>	<b>226</b>	<b>219</b>	<b>220</b>	<b>216</b>	<b>-9.9</b>	<b>-4.4%</b>	<b>+1.4</b>	<b>-1.5%</b>	<b>-4.53</b>	<b>+281</b>
Attendant/ Aide	437	237	197	195	-242	-55.3%	-42	-17.6%	-2	225
Health & Social Care Assistants	14	23	27	27	+13	+93.7%	+3	+13.3%	0	28
Health Care Assistant/ Care Assistant	916	1,152	1,216	1,240	+324	+35.3%	+88	+7.7%	+24	1,429
<b>Health Care Assistants</b>	<b>1,367</b>	<b>1,412</b>	<b>1,440</b>	<b>1,462</b>	<b>+94</b>	<b>+6.9%</b>	<b>+50</b>	<b>+3.5%</b>	<b>+22</b>	<b>1,682</b>
Home Helps	499	407	387	382	-117	-23.5%	-25	-6.2%	-5	499
<b>Home Help</b>	<b>499</b>	<b>407</b>	<b>387</b>	<b>382</b>	<b>-117</b>	<b>-23.5%</b>	<b>-25</b>	<b>-6.2%</b>	<b>-5</b>	<b>499</b>
Home Care Services	29	47	45	45	+16	+53.6%	-2	-4.3%	+0	51
Other Care Grades	63	122	119	114	+52	+82.7%	-8	-6.4%	-5	126
Pastoral Care	10	8	6	6	-5	-44.2%	-2	-24.1%	+0	8
Workshop Services	169	158	158	162	-6	-3.8%	+4	+2.6%	+5	204

Employment by Grade Group JUL 2023	WTE DEC 2019	WTE DEC 2022	WTE JUN 2023	WTE JUL 2023	WTE change since DEC 2019	% WTE Change since Dec 2019	WTE change since DEC 2022	% WTE Change since Dec 2022	WTE change since JUN 2023	No. JUL 2023
Overall	5,545	5,972	6,084	6,060	+515	+9.3%	+88	+1.5%	-24	7,045
Care, other	271	335	327	327	+57	+20.9%	-7	-2.2%	+0	389
Patient & Client Care	2,137	2,154	2,153	2,171	+33.5	+1.6%	+4.9	+0.8%	17.59	+2,570



## CHO 2 Employment Report: JUL 2023

### Month-on-Month Summary

Month-on-Month Summary	% WTE change since JUN 2023	WTE change since JUN 2023	Community Health & Wellbeing	Mental Health	Primary Care	Disabilities	Older People	CHO Operations
Consultants	-0.6%	-0.3		-0.1	-0.2	+0.0		
Registrars	+22.8%	+19.6		+1.9	+18.7	-1.0		
SHO/ Interns	-31.8%	-13.6		-9.6	-5.0	+1.0		
Medical/ Dental, other	-0.9%	-0.6			-0.6	+0.0	+0.0	
<b>Medical &amp; Dental</b>	<b>+2.2%</b>	<b>+5.2</b>		<b>-7.8</b>	<b>+13.0</b>	<b>+0.0</b>	<b>+0.0</b>	
Nurse/ Midwife Manager	-0.4%	-1.4	+0.0	+1.2	-0.7	-1.5	-0.2	-0.0
Nurse/ Midwife Specialist & AN/MP	-1.6%	-2.6		-0.8	-1.5	-0.1	+0.8	-0.9
Staff Nurse/ Staff Midwife	-0.8%	-7.4		-5.8	+5.0	-3.7	-2.9	
Public Health Nurse	-3.2%	-5.9			-5.9		+0.0	
Nursing/ Midwifery Student	-16.9%	-5.0		+0.0	-5.0			
Nursing/ Midwifery other	-7.0%	-0.3		-0.3				
<b>Nursing &amp; Midwifery</b>	<b>-1.4%</b>	<b>-22.6</b>	<b>+0.0</b>	<b>-5.8</b>	<b>-8.2</b>	<b>-5.3</b>	<b>-2.3</b>	<b>-0.9</b>
Therapy Professions	-3.1%	-13.6		-2.5	-11.5	-0.9	+1.3	
Health Science/ Diagnostics	+0.0%	+0.0			+0.0		+0.0	
Social Care	+2.6%	+8.1		-0.8	-0.1	+9.0		
Pharmacy	-4.6%	-0.3	+0.0	-0.0	+0.0		-0.0	-0.3
Psychologists	-1.0%	-0.9		+0.5	-0.8	-0.7		
Social Workers	-2.7%	-2.8		-0.9	-1.0	-0.2	+0.0	-0.7





H&SC, Other	-12.2%	-9.5	-8.7	-0.1	-0.1	-0.7		+0.0
<b>Health &amp; Social Care Professionals</b>	<b>-1.8%</b>	<b>-19.0</b>	<b>-8.7</b>	<b>-3.8</b>	<b>-13.4</b>	<b>+6.5</b>	<b>+1.3</b>	<b>-0.9</b>
Management (VIII & above)	+0.6%	+0.4	-0.6	-0.0	+0.4	+0.7	-0.1	-0.0
Administrative/ Supervisory (V to VII)	-1.1%	-2.8	-0.0	-1.6	-0.5	-0.3	-0.9	+0.4
Clerical (III & IV)	+0.3%	+1.4	-0.3	-2.5	+1.7	+3.8	-1.0	-0.2
<b>Management &amp; Administrative</b>	<b>-0.1%</b>	<b>-0.9</b>	<b>-0.9</b>	<b>-4.1</b>	<b>+1.7</b>	<b>+4.2</b>	<b>-2.0</b>	<b>+0.2</b>
Support	-3.3%	-4.7		-0.2	-0.1	-3.8	-0.6	
Maintenance/ Technical	+0.2%	+0.1		-0.8	-0.0	+1.0	-0.0	
<b>General Support</b>	<b>-2.1%</b>	<b>-4.5</b>		<b>-0.9</b>	<b>-0.1</b>	<b>-2.8</b>	<b>-0.6</b>	
Health Care Assistants	+1.5%	+21.8		-0.7	-2.4	+26.7	-1.9	
Home Help	-1.2%	-4.7					-4.7	
Care, other	+0.1%	+0.5	-0.8	+2.1	-3.3	+1.9	+0.5	
<b>Patient &amp; Client Care</b>	<b>+0.8%</b>	<b>+17.6</b>	<b>-0.8</b>	<b>+1.5</b>	<b>-5.6</b>	<b>+28.6</b>	<b>-6.0</b>	



## CHO 2 Employment Report: JUL 2023

### Year-to-Date Summary

Year-to-Date Summary	% WTE change since DEC 2022	WTE change since DEC 2022	Community Health & Wellbeing	Mental Health	Primary Care	Disabilities	Older People	CHO Operations
Consultants	+7.8%	+3.4		+2.5	+0.9	+0.0		
Registrars	+16.9%	+15.3		-0.3	+15.6	+0.0		
SHO/ Interns	-31.9%	-13.7		-10.7	-3.0	+0.0		
Medical/ Dental, other	+2.3%	+1.3		-1.0	+2.1	+0.0	+0.2	
<b>Medical &amp; Dental</b>	<b>+2.7%</b>	<b>+6.3</b>		<b>-9.5</b>	<b>+15.7</b>	<b>+0.0</b>	<b>+0.2</b>	
Nurse/ Midwife Manager	+1.7%	+5.7	+2.0	+5.7	-1.5	-0.8	-2.7	+3.0
Nurse/ Midwife Specialist & AN/MP	+11.2%	+15.9		+7.8	+5.4	-1.3	+4.9	-1.0
Staff Nurse/ Staff Midwife	-1.7%	-15.9		-19.9	+14.6	-10.0	-0.6	
Public Health Nurse	-4.6%	-8.7			-8.7		+0.0	
Nursing/ Midwifery Student	-3.9%	-1.0		+12.5	-13.4			
Nursing/ Midwifery other	+12.5%	+0.5		+0.5				
<b>Nursing &amp; Midwifery</b>	<b>-0.2%</b>	<b>-3.5</b>	<b>+2.0</b>	<b>+6.6</b>	<b>-3.6</b>	<b>-12.1</b>	<b>+1.7</b>	<b>+2.0</b>
Therapy Professions	+1.3%	+5.5		-1.5	-21.6	+21.2	+7.4	
Health Science/ Diagnostics	+10.5%	+1.0			+1.0		+0.0	
Social Care	+4.9%	+14.7		-2.0	-1.0	+17.7		
Pharmacy	-0.9%	-0.1	+1.0	-0.0	+0.0		-0.0	-1.0



Psychologists	+5.8%	+5.1		+4.4	-4.5	+5.2		
Social Workers	-2.4%	-2.4		-1.4	-3.3	+0.8	-10.1	+11.5
H&SC, Other	-10.8%	-8.3	+1.4	+0.0	-10.2	-0.5		+1.0
<b>Health &amp; Social Care Professionals</b>	<b>+1.5%</b>	<b>+15.5</b>	<b>+2.4</b>	<b>-0.4</b>	<b>-39.6</b>	<b>+44.3</b>	<b>-2.7</b>	<b>+11.5</b>
Management (VIII & above)	+1.0%	+0.7	+2.4	-0.0	-4.3	+1.8	-0.1	+0.9
Administrative/ Supervisory (V to VII)	+7.6%	+18.0	+3.9	-0.2	-2.3	+9.4	-0.4	+7.5
Clerical (III & IV)	+8.1%	+36.6	+4.8	+4.5	+1.2	+12.9	+8.7	+4.6
<b>Management &amp; Administrative</b>	<b>+7.3%</b>	<b>+55.3</b>	<b>+11.1</b>	<b>+4.3</b>	<b>-5.4</b>	<b>+24.1</b>	<b>+8.2</b>	<b>+13.0</b>
Support	-2.0%	-2.8		-3.4	+1.8	-2.1	+1.0	
Maintenance/ Technical	-0.6%	-0.5		-1.0	-1.0	+0.6	+1.0	
<b>General Support</b>	<b>-1.5%</b>	<b>-3.2</b>		<b>-4.5</b>	<b>+0.8</b>	<b>-1.6</b>	<b>+2.0</b>	
Health Care Assistants	+3.5%	+49.8		-1.0	-5.2	+55.3	+0.8	
Home Help	-6.2%	-25.1					-25.1	
Care, other	-2.2%	-7.5	-0.7	-1.8	-9.7	+4.4	+0.4	
<b>Patient &amp; Client Care</b>	<b>+0.8%</b>	<b>+17.3</b>	<b>-0.7</b>	<b>-2.8</b>	<b>-14.9</b>	<b>+59.6</b>	<b>-23.9</b>	



## CHO 2 Employment Report: JUL 2023

### Year-on-Year Summary

Year-on-Year Summary	% WTE change since JUL 2022	WTE change since JUL 2022	Community Health & Wellbeing	Mental Health	Primary Care	Disabilities	Older People	CHO Operations
Consultants	+5.1%	+2.3		+1.3	+0.9	+0.0		
Registrars	-5.4%	-6.0		-2.9	-3.2	+0.0		
SHO/ Interns	-7.4%	-2.3		+0.6	-2.9	+0.0		
Medical/ Dental, other	+3.5%	+2.0		-1.0	+2.3	+0.1	+0.6	
<b>Medical &amp; Dental</b>	<b>-1.7%</b>	<b>-4.1</b>		<b>-2.0</b>	<b>-2.8</b>	<b>+0.1</b>	<b>+0.6</b>	
Nurse/ Midwife Manager	+4.9%	+15.6	+2.0	+3.4	+6.5	-1.3	+2.1	+3.0
Nurse/ Midwife Specialist & AN/MP	+21.8%	+28.2		+14.8	+11.8	-1.3	+4.9	-2.0
Staff Nurse/ Staff Midwife	-2.9%	-26.8		-17.8	+1.5	-8.3	-2.2	
Public Health Nurse	+2.2%	+3.8			+3.8		+0.0	
Nursing/ Midwifery Student	-9.3%	-2.5		+0.5	-3.0			
Nursing/ Midwifery other	+50.0%	+1.5		+1.5				
<b>Nursing &amp; Midwifery</b>	<b>+1.2%</b>	<b>+19.7</b>	<b>+2.0</b>	<b>+2.4</b>	<b>+20.5</b>	<b>-10.9</b>	<b>+4.8</b>	<b>+0.9</b>
Therapy Professions	+9.0%	+35.4		+6.5	-7.9	+27.2	+9.5	
Health Science/ Diagnostics	+13.1%	+1.2			+1.1		+0.2	
Social Care	+6.3%	+18.5		-0.9	-3.0	+22.4		
Pharmacy	+12.7%	+0.7	+1.0	+0.0	-0.2		+0.0	-0.3
Psychologists	+10.2%	+8.6		+5.0	-2.6	+6.1		
Social Workers	+10.8%	+9.8		-0.9	+5.6	-0.0	-6.5	+11.5

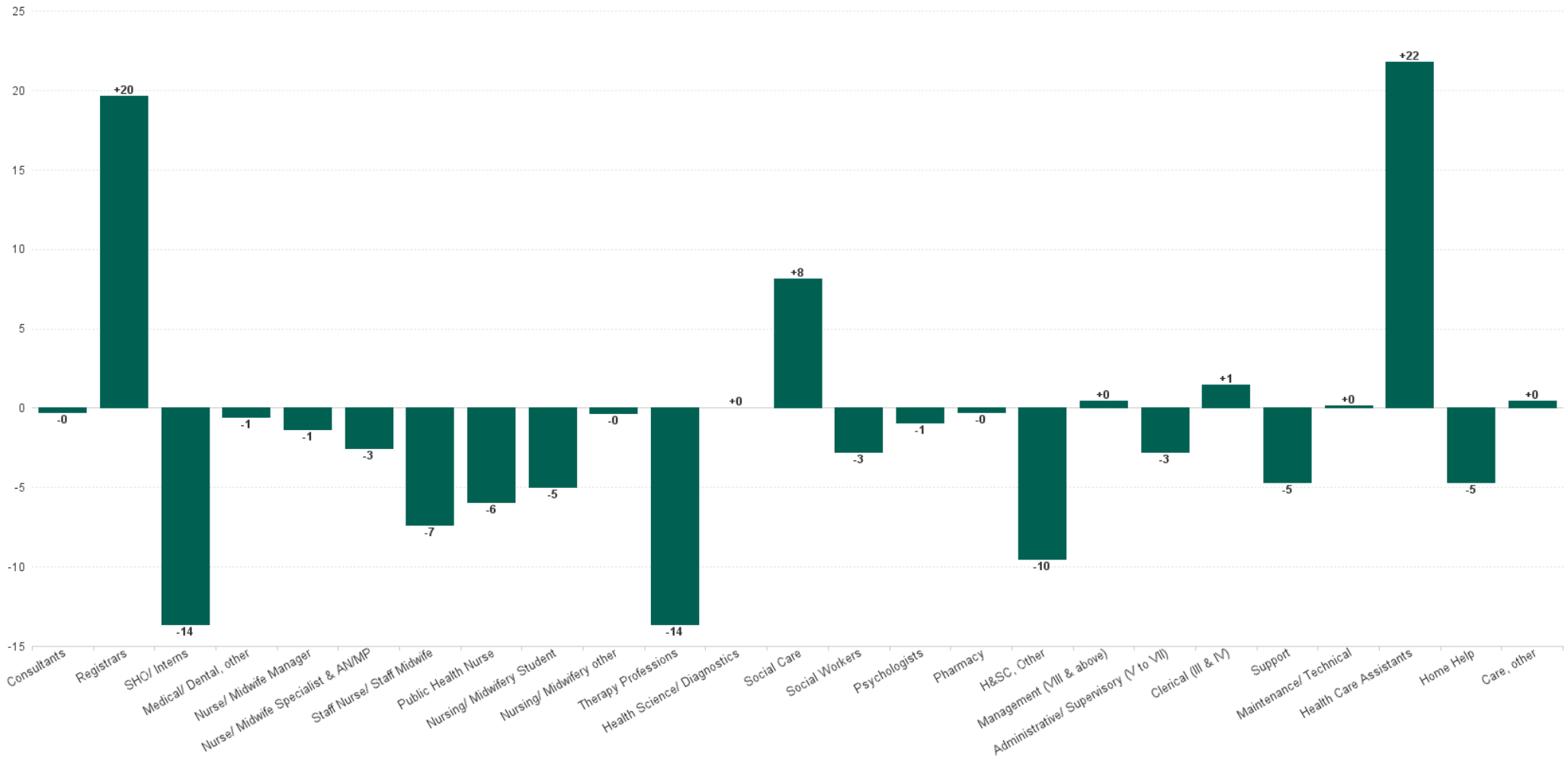


H&SC, Other	-5.4%	-3.9	+1.4	+0.0	-5.1	-1.2		+1.0
<b>Health &amp; Social Care Professionals</b>	<b>+7.4%</b>	<b>+70.3</b>	<b>+2.4</b>	<b>+9.8</b>	<b>-12.0</b>	<b>+54.6</b>	<b>+3.2</b>	<b>+12.2</b>
Management (VIII & above)	+1.0%	+0.7	+2.4	+1.0	-4.5	+0.8	+0.5	+0.5
Administrative/ Supervisory (V to VII)	+20.1%	+42.4	+4.9	+0.9	+3.3	+16.5	+1.7	+15.1
Clerical (III & IV)	+10.2%	+45.4	+4.8	+11.0	-3.2	+15.0	+10.6	+7.1
<b>Management &amp; Administrative</b>	<b>+12.2%</b>	<b>+88.4</b>	<b>+12.1</b>	<b>+12.9</b>	<b>-4.3</b>	<b>+32.3</b>	<b>+12.8</b>	<b>+22.7</b>
Support	-2.2%	-3.1		-3.6	-0.2	+0.1	+0.6	
Maintenance/ Technical	+4.8%	+3.6		+1.9	-0.0	-1.0	+2.8	
<b>General Support</b>	<b>+0.2%</b>	<b>+0.5</b>		<b>-1.8</b>	<b>-0.2</b>	<b>-0.9</b>	<b>+3.4</b>	
Health Care Assistants	+3.4%	+48.5		+3.5	-17.5	+40.9	+21.7	
Home Help	-0.8%	-2.9					-2.9	
Care, other	+0.9%	+2.8	+0.8	+2.8	-11.6	+12.3	-1.5	
<b>Patient &amp; Client Care</b>	<b>+2.3%</b>	<b>+48.4</b>	<b>+0.8</b>	<b>+6.3</b>	<b>-29.1</b>	<b>+53.2</b>	<b>+17.3</b>	



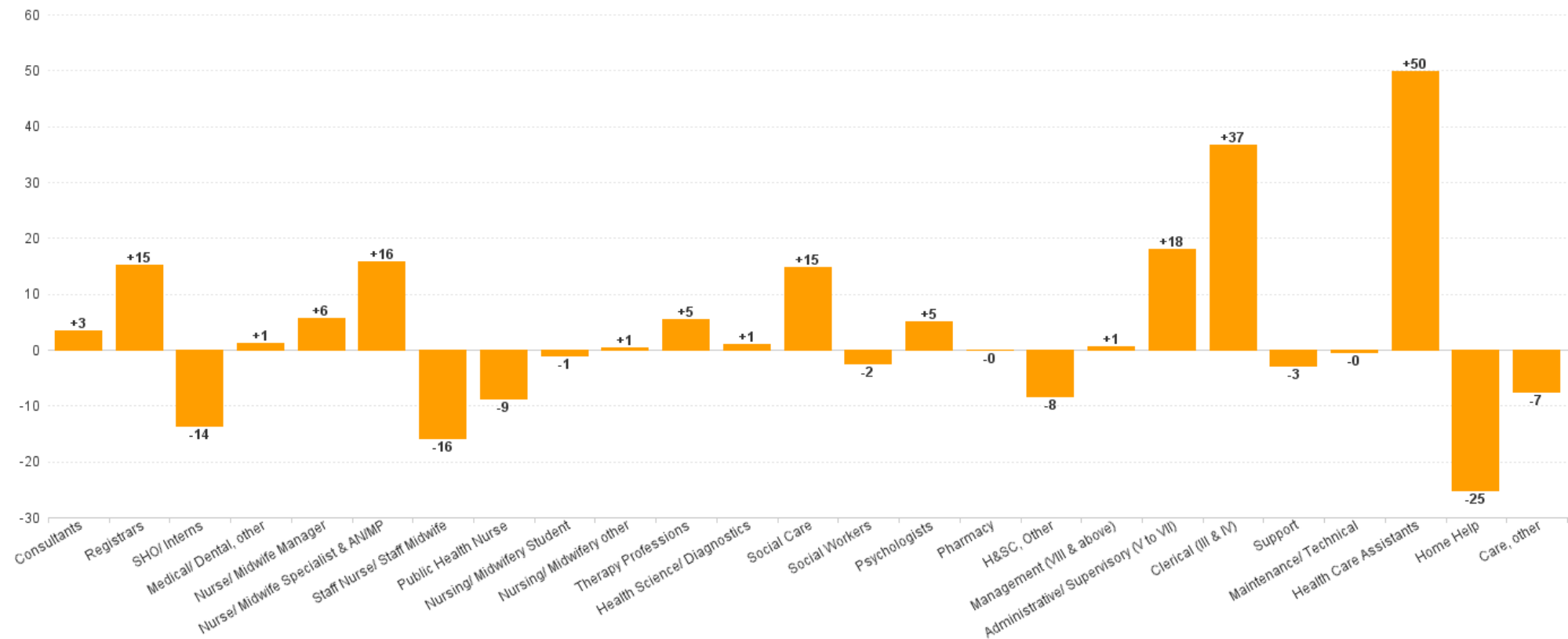
## CHO 2 Employment Report: JUL 2023

### Month-on-Month Summary Chart: Change since JUN 2023



CHO 2 Employment Report: JUL 2023

Year-to-Date Summary Chart: Change since DEC 2022



## CHO 2 Employment Report: JUL 2023

Year-on-Year Summary Chart: Change since JUL 2022

